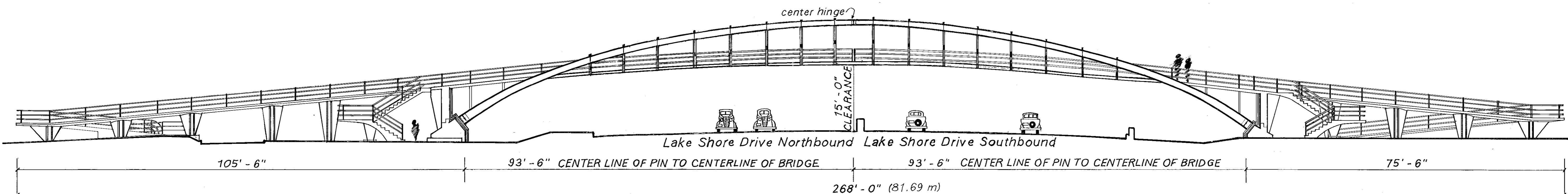


# PASSERELLE IN LINCOLN PARK

## SPANNING LAKE SHORE DRIVE

### 1940 CHICAGO, ILLINOIS



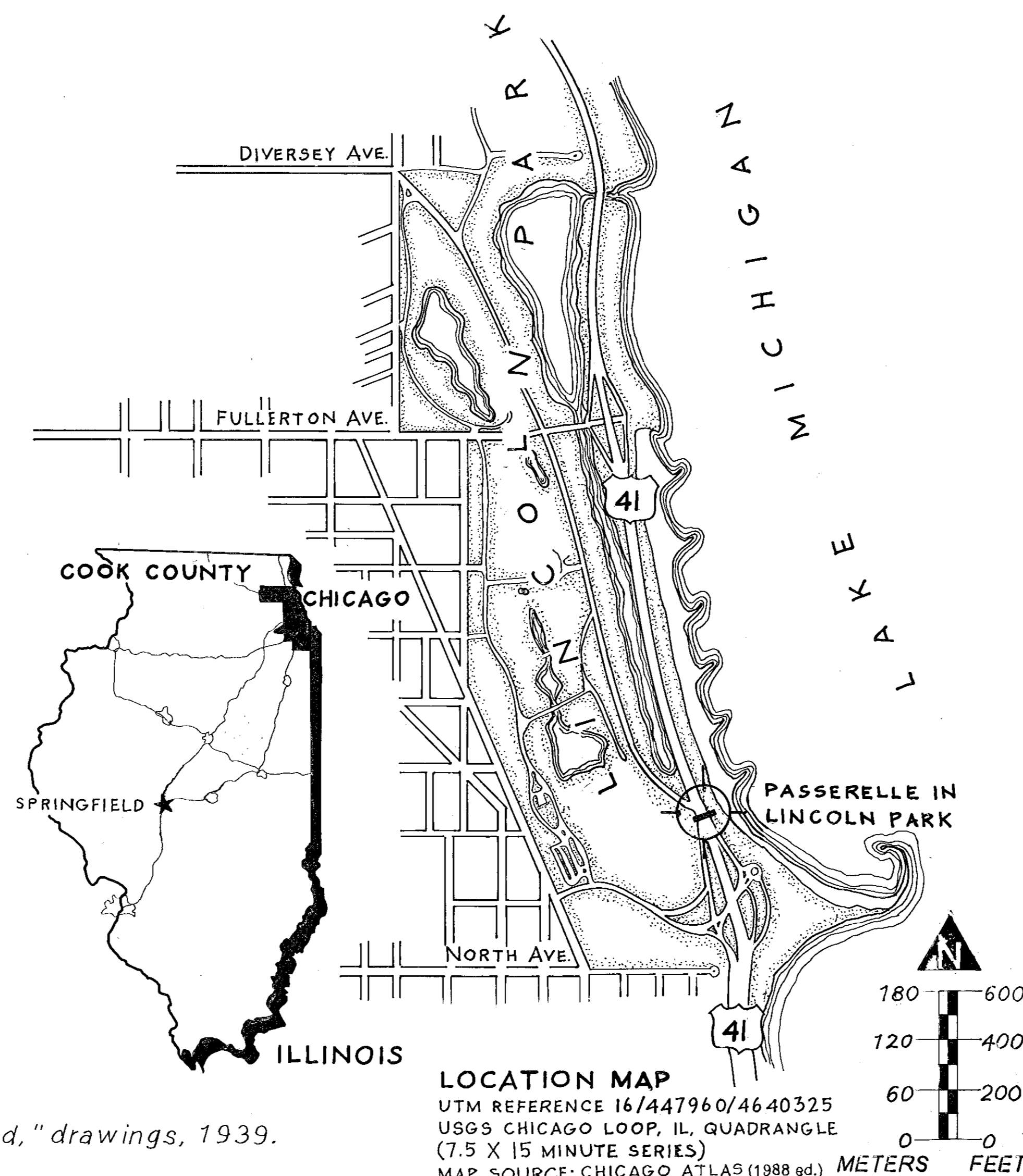
#### ELEVATION LOOKING SOUTH

Since the first segment of Lake Shore Drive was constructed by the Lincoln Park Commission in 1869, Chicago's Lake Michigan shoreline has served double duty as a recreation area and a transportation corridor. The Chicago Park District, consolidated from twenty-two smaller park districts in 1934, continued their efforts to construct a continuous, limited-access highway on the lake front. In response to real estate interests' concerns about the appearance of "ramp-type footbridges," the Park District called the structures "passerelles," a French term intended to add elegance.

More importantly, architects hired under U. S. Works Progress Administration (WPA) sponsorship collaborated with engineers to produce aesthetically pleasing designs. Although the WPA is better known for bridges designed in a rustic mode and built with manual labor, WPA architects in Chicago produced strikingly modern welded steel bridges. The Lincoln Park passerelle gained national recognition in the Museum of Modern Art's exhibition, "Built in USA, 1932-44."

The passerelle's curved shapes and clean lines were made possible by electric arc welding, then a relatively new technology in bridge construction. The welded arch rib (stiffened by diaphragm plates hidden inside) and railings sweep over the roadway in continuous arcs uninterrupted by fasteners. The arch's three-hinged design has allowed it to tolerate large settlements in its abutments. A 1991 rehabilitation added foundation ties to slow settlement, and diagonal bracing to stiffen the arch.

Sources: Chicago Park District, "Passerelle Near Menomonee Street Produced," drawings, 1939. Chicago Park District plan files.



The Chicago Bridges Recording Project is part of the Historic American Engineering Record (HAER), a long-range program to document historically significant engineering and industrial works in the United States. The HAER program is administered by the Historic American Buildings Survey/Historic American Engineering Record (HABS/HAER) Division of the National Park Service, U. S. Department of the Interior, E. Blaine Cliver, Chief. The project was sponsored during the summer of 1999 by the City of Chicago, Richard M. Daley, Mayor; and the Chicago Department of Transportation, Thomas R. Walker, Commissioner, and S. L. Kaderbek, Chief Engineer, Bureau of Bridges and Transit.

The field work, measured drawings, historical reports, and photographs were prepared under the direction of Eric N. DeLony, Chief of HAER. The recording team consisted of Architectural Field Supervisor James P. Hanley (Peoria, IL); Engineering Field Supervisor Justin M. Spivey (HAER); Architects Susan H. Gordon (University of Virginia), Karen L. Hassey (University of Virginia), Julia M. Koslow (University of Notre Dame), and Domagoj Kranjcevic (ICOMOS, University of Zagreb, Croatia); and Historians Jeffrey A. Hess (Minneapolis, MN) and Matthew T. Sneddon (University of Washington). Large-format photographs were taken by Jet Lowe (HAER). Bureau of Bridges and Transit Assistant Chief Engineer Christopher Holt served as department liaison.

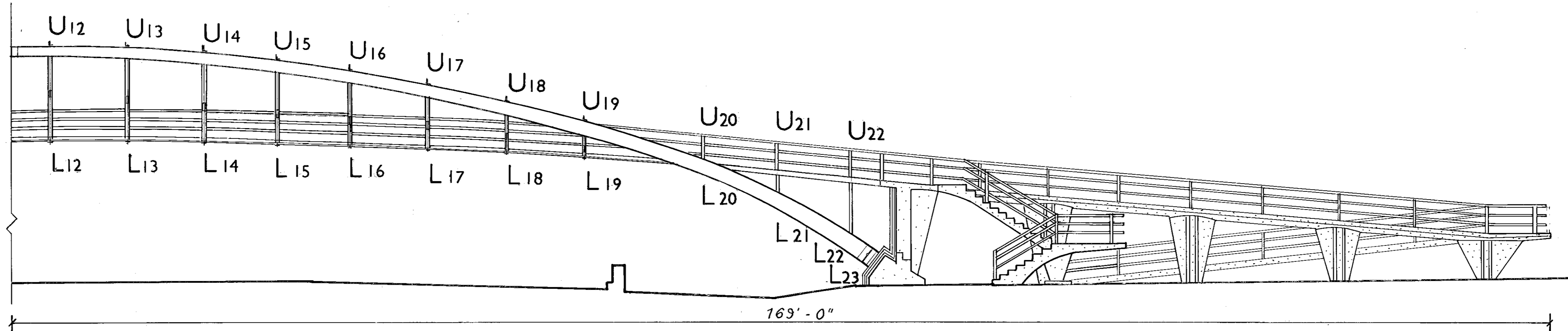
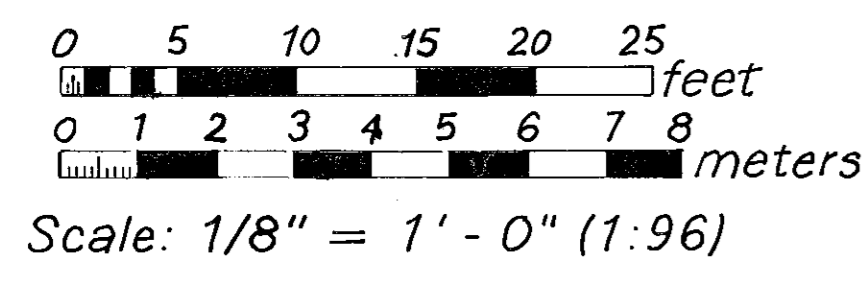
Graphic Source: Chicago Park District

HISTORIC AMERICAN ENGINEERING RECORD  
 SHEET 1 OF 4  
 ILLINOIS  
 PASSERELLE IN LINCOLN PARK  
 SPANNING NORTH LAKE SHORE DRIVE (US 41) AT EAST MENOMONEE STREET  
 COOK COUNTY  
 CHICAGO  
 DELINEATED BY: Susan Gordon, 1999  
 CHICAGO BRIDGES RECORDING PROJECT  
 UNITED STATES DEPARTMENT OF THE INTERIOR  
 NATIONAL PARK SERVICE  
 IF REPRODUCED, PLEASE CREDIT: HISTORIC AMERICAN ENGINEERING RECORD, NATIONAL PARK SERVICE, NAME OF DELINEATOR, DATE OF THE DRAWING

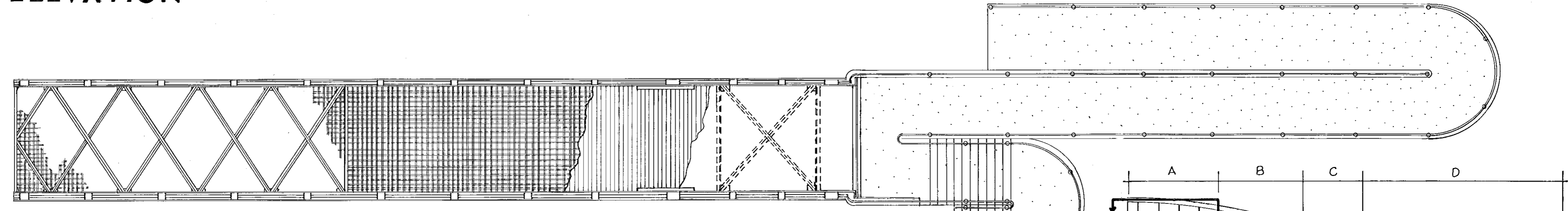
TRIM LINE

# 1940

# PLANS AND ELEVATIONS

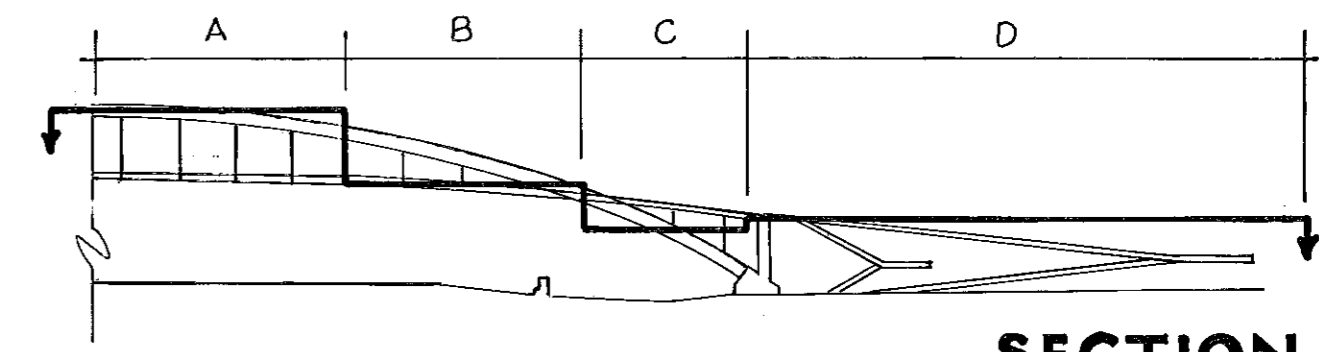


ELEVATION



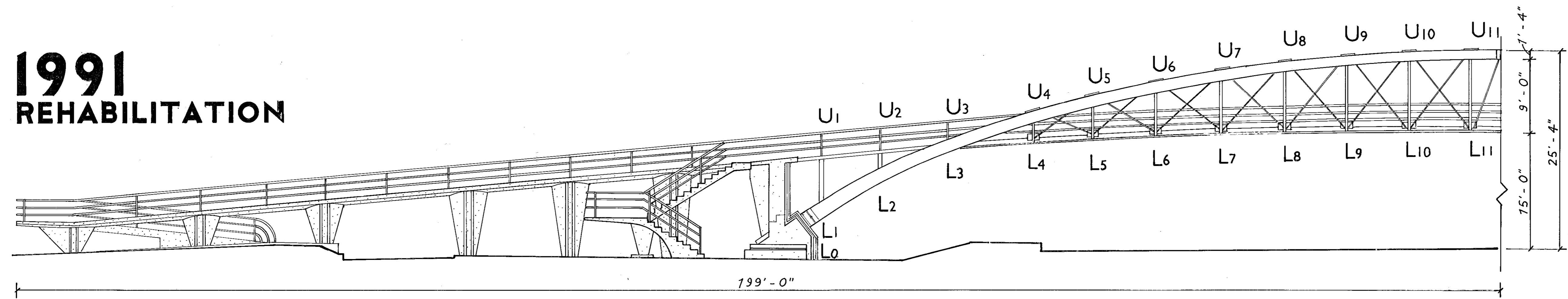
PLAN

A UPPER DIAGONAL BRACING  
 B DECK LEVEL  
 C LOWER DIAGONAL BRACING  
 D CONCRETE APPROACH

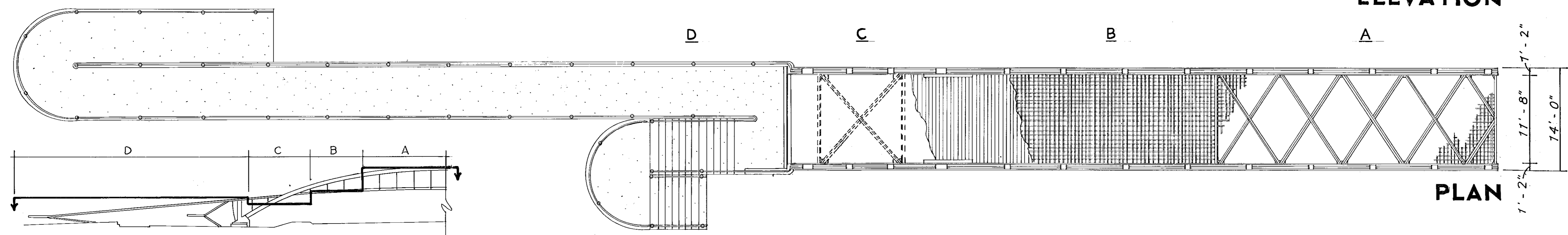


SECTION

# 1991 REHABILITATION



ELEVATION



PLAN

SECTION

Sources: Chicago Park District, "Passerelle Near Menomonee Street Produced," drawings, 1939; and Wiss, Janney, Elstner Associates, "Rehabilitation of Lincoln Park Pedestrian Bridge Near North Ave.," drawings, 1991. Both: Chicago Park District plan files.

DELINEATED BY: Karen Hassey, Julia Koslow and Susan Gordon, 1999

CHICAGO BRIDGES RECORDING PROJECT  
 UNITED STATES DEPARTMENT OF THE INTERIOR

PASSERELLE IN LINCOLN PARK  
 SPANNING NORTH LAKE SHORE DRIVE (US 41) AT EAST MENOMONEE STREET  
 COOK COUNTY

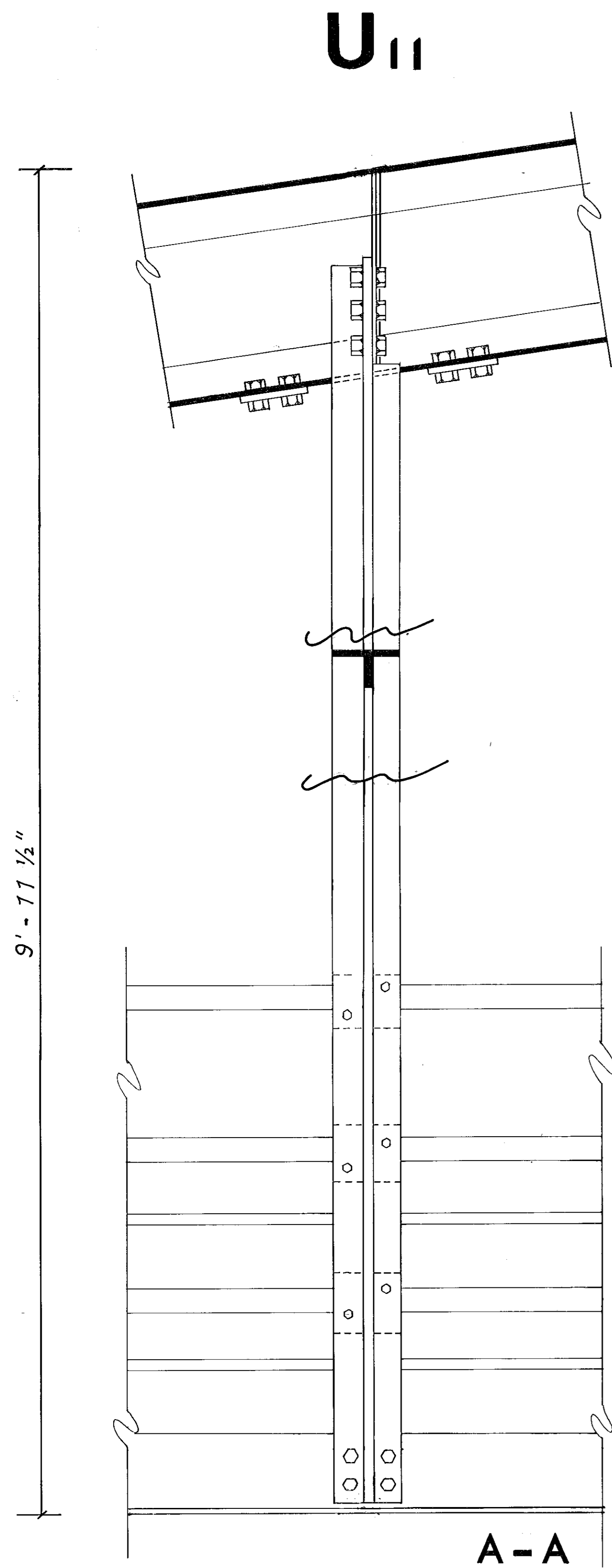
ILLINOIS

SHEET 2 of 4

HISTORIC AMERICAN ENGINEERING RECORD  
 IL-155

IF REPRODUCED, PLEASE CREDIT: HISTORIC AMERICAN ENGINEERING RECORD, NATIONAL PARK SERVICE, NAME OF DELINEATOR, DATE OF THE DRAWING

TRIM LINE

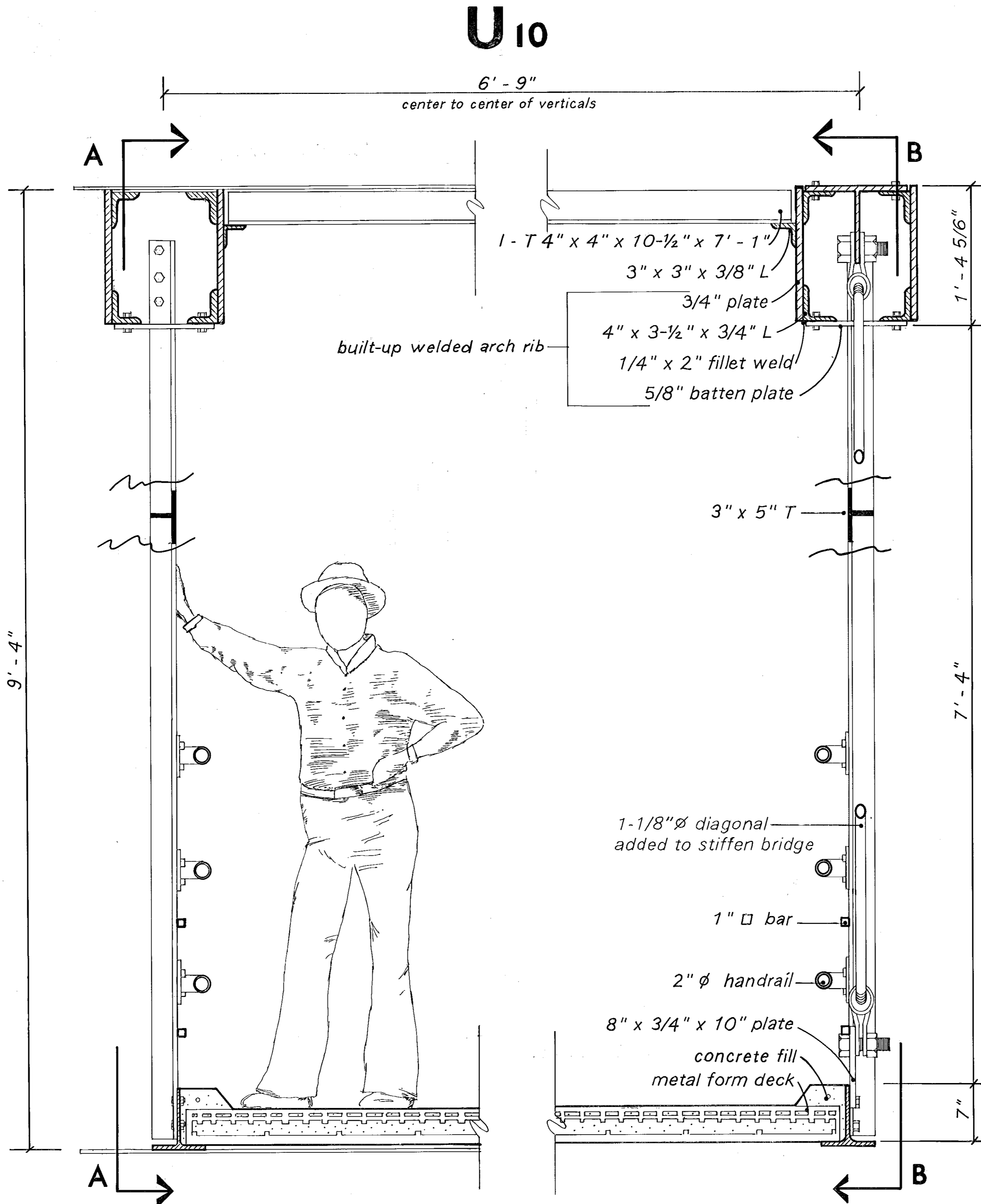


L11

ELEVATION  
INSIDE RIB

1940

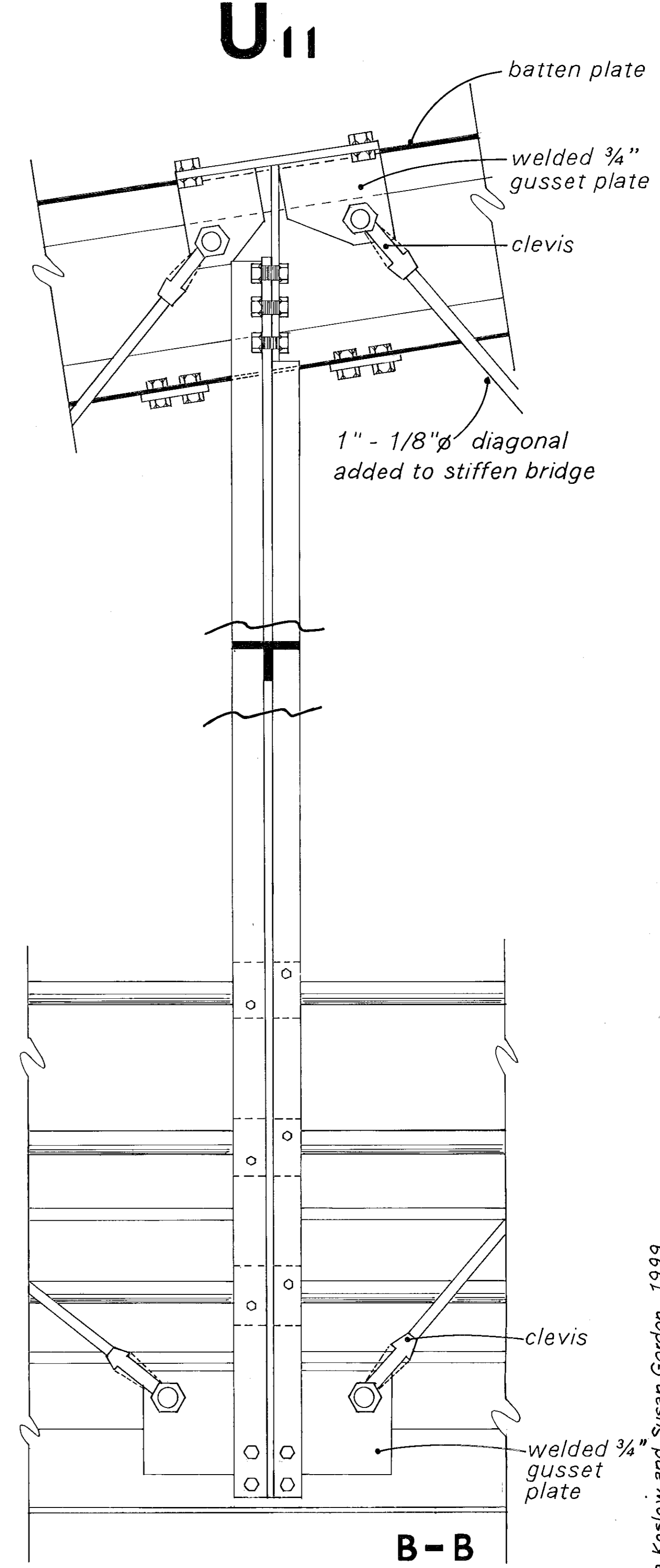
SECTION



L10

SECTION

REHABILITATION  
1991

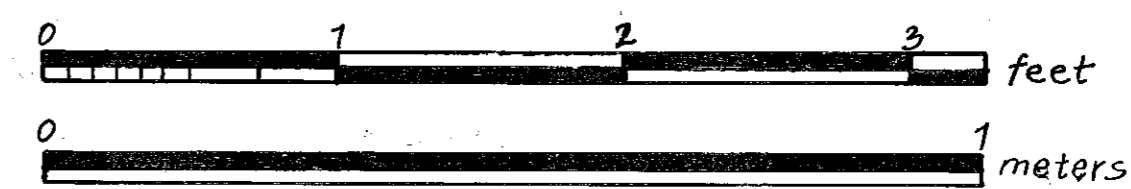


L11

ELEVATION  
INSIDE RIB

Sources: Chicago Park District, "Passerelle Near Menomonee Street Produced," drawings, 1939; and Wiss, Janney, Elstner Associates, "Rehabilitation of Lincoln Park Pedestrian Bridge Near North Ave.," drawings, 1991. Both: Chicago Park District plan files.

SCALE: 1-1/2" = 1'-0"  
(1:8)



DELINEATED BY: Karen Hassey, Julia Koslow and Susan Gordon, 1999

CHICAGO BRIDGES RECORDING PROJECT  
WALTON PARK SERVICE, INTERIOR  
UNITED STATES DEPARTMENT OF THE INTERIOR

PASSERELLE IN LINCOLN PARK  
SPANNING NORTH LAKE SHORE DRIVE (US 41) AT EAST MENOMONEE STREET  
COOK COUNTY

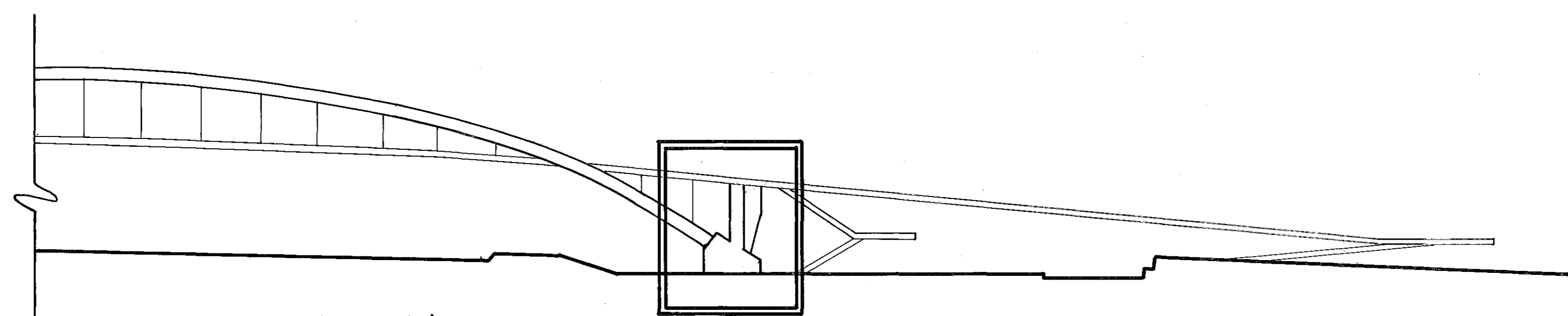
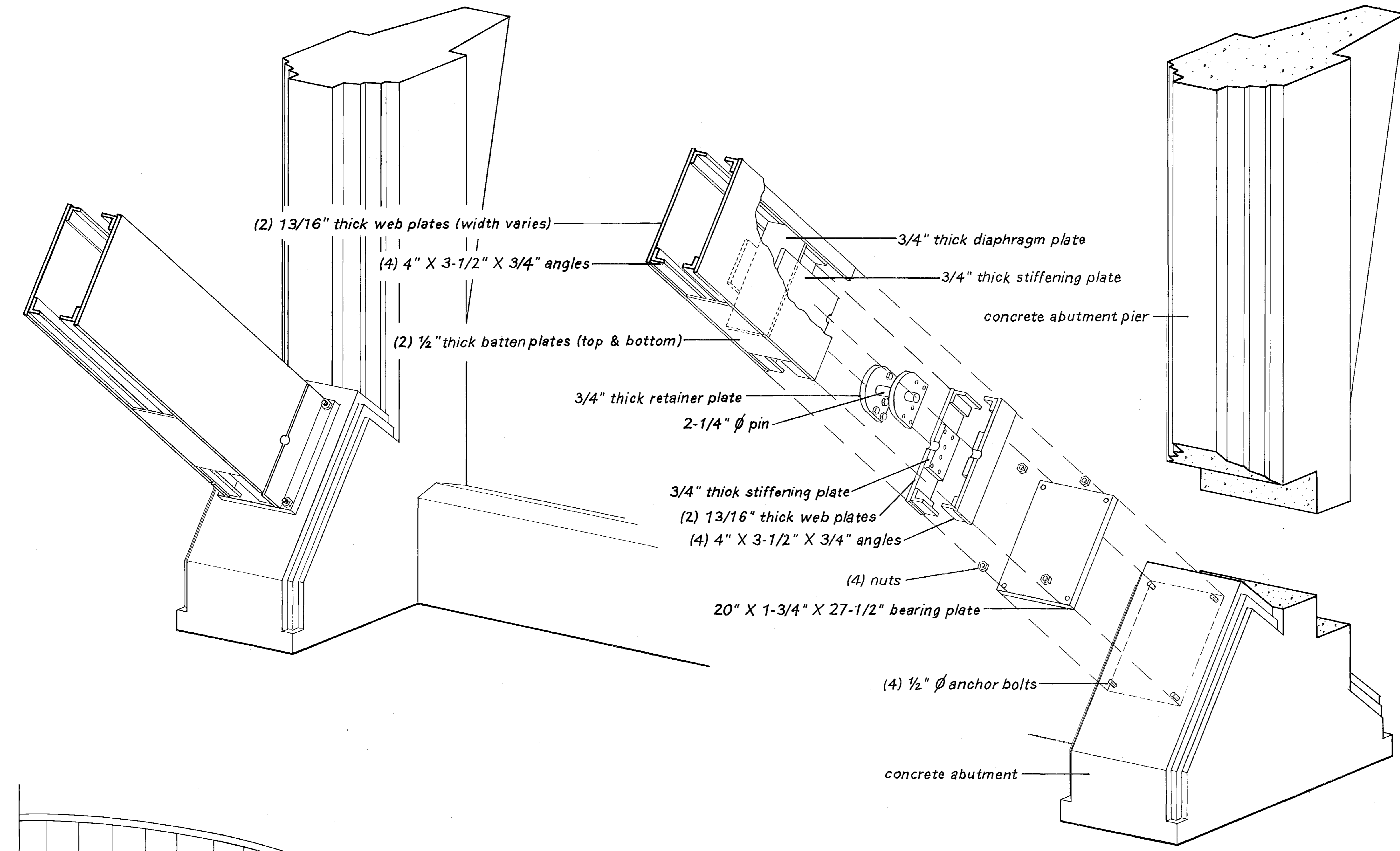
ILLINOIS

SHEET  
3 of 4

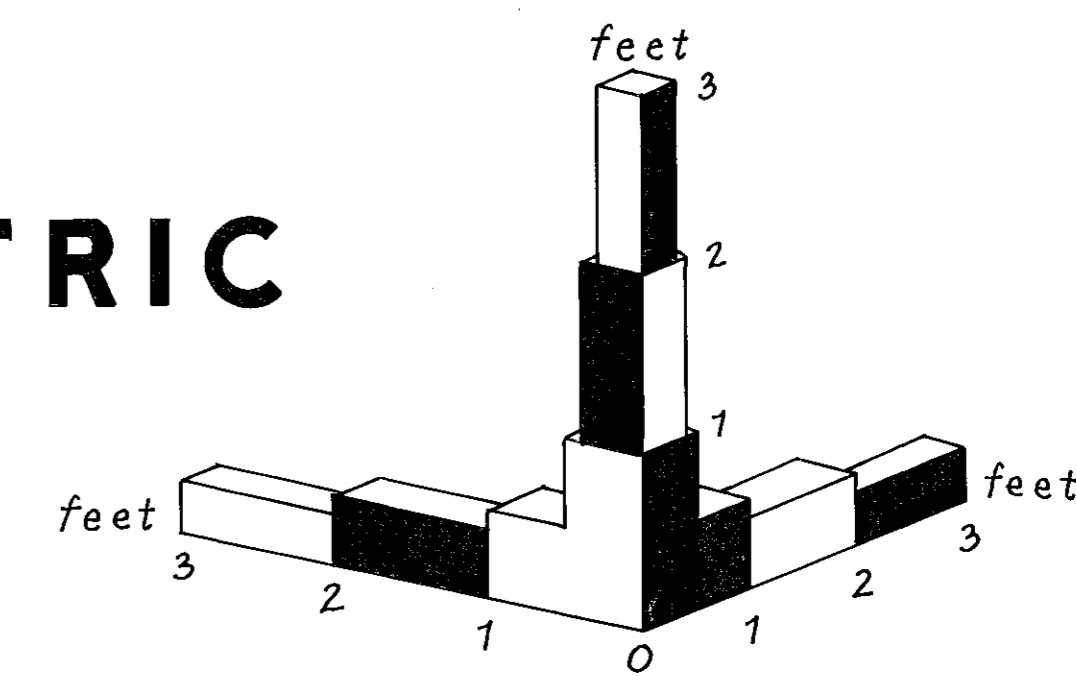
HISTORIC AMERICAN  
ENGINEERING RECORD  
IL-155

IF REPRODUCED, PLEASE CREDIT: HISTORIC AMERICAN ENGINEERING RECORD, NATIONAL PARK SERVICE, NAME OF DELINEATOR, DATE OF THE DRAWING

# HINGE AT BASE OF ARCH



## AXONOMETRIC



DELIMITED BY: Susan Gordon and Domogoj Kranjcevic, 1999

CHICAGO BRIDGES RECORDING PROJECT

CHICAGO

SPANNING NORTH LAKE SHORE DRIVE (U.S. 41) AT EAST MENOMONEE STREET

PASSERELLE IN LINCOLN PARK

COOK COUNTY

ILLINOIS

SHEET 4 of 4

HISTORIC AMERICAN ENGINEERING RECORD

ILL-155

IF REPRODUCED, PLEASE CREDIT: HISTORIC AMERICAN ENGINEERING RECORD, NATIONAL PARK SERVICE, NAME OF DELINEATOR, DATE OF THE DRAWING