

Memorial Bridge Historic Structures Report

Tab N. Historic Photographs

Memorial Bridge Historic Structures Report

List of Captions: Historic Photos

- N-1) View of Memorial Bridge Site and Badgers Island. Undated (c. 1920) (Maine DOT ME 014)
- N-2) View Northeast From Portsmouth Showing Bridge Site and Preliminary Work by Navy Yard, July 1 1920. (Portsmouth Athenaeum-Norris Collection 1360) Neg. No. 4
- N-3) View Looking East of Daniel Street Toward Site of Approach, Jan 5, 1921 (Portsmouth Athenaeum-Norris Collection 1363)
- N-4) View Looking East of State Street Toward Site of Approach, Jan 5, 1921 (Portsmouth Athenaeum-Norris Collection 1364)
- N-5) Approach Site, Jan 5, 1921 (Portsmouth Athenaeum-Norris Collection 1365)
- N-6) Approach/South Abutment Site, Jan 5 1921 (Portsmouth Athenaeum-Norris Collection 1367)
- N-7) Approach/South Abutment Site, March 31 1921 (Portsmouth Athenaeum-Norris Collection 1373)
- N-8) View East of Caisson & Launching Ways, April 4 1921 (Maine DOT ME- 001)
- N-9) Working Chamber Inside Caisson, April 4 1921 (Maine DOT ME- 025)
- N-10) Cofferdam for South Abutment, April 4 1921 (Portsmouth Athenaeum-Norris Collection 1374)
- N-11) Launching of Caisson for North Pier, April 21, 1921 (Maine DOT ME026)
- N-12) Fitting up Scow for Compressed Air Plant, June 4, 1921 (Maine DOT ME 08)
- N-13) Compressed Air plant (ND) (Portsmouth Athenaeum-Norris Collection 1392)
- N-14) Compressed Air plant (ND) (Portsmouth Athenaeum-Norris Collection 1393)
- N-15) Caisson for South Pier, June 4 1921 (Portsmouth Athenaeum-Norris Collection 1380)
- N-16) Caisson for South Abutment, July 5, 1921 (Portsmouth Athenaeum-Norris Collection 1382)
- N-17) Caisson for South Abutment, July 5, 1921 (Portsmouth Athenaeum-Norris Collection 1383)
- N-18) Caisson for South Pier, July 5, 1921 (Portsmouth Athenaeum-Norris Collection 1385)
- N-19) View East of Bridge site, Sept 22 1921 (Maine DOT ME#25)
- N-20) View Southwest of North Abutment, Nov 14 1921 (Maine DOT ME 023)
- N-21) Approach Site, Jan 3 1922 (Portsmouth Athenaeum-Norris Collection 1388)
- N-22) South Abutment View East, Feb 7, 1922 (Maine DOT ME016)
- N-23) View South From Badgers Island, Feb 7, 1922 (Maine DOT ME007)
- N-24) Model of North Abutment, c. March 1922 (Maine DOT ME002)
- N-25) Concrete Forms for Approach, May 1 1922 (Portsmouth Athenaeum-Norris Collection 1399)

Memorial Bridge Historic Structures Report

- N-26) North Truss Span Lighters for Moving, June 9 1922 (Maine DOT ME 022)
- N-27) Moving North Span, July 8 1922 (Portsmouth Athenaeum-Norris Collection PG-158A)
- N-28) Placing North Span, July 8 1922 (Portsmouth Athenaeum-Norris Collection PG 158B)
- N-29) Temporary Pier for South End of South Truss Span, Aug 7 1922 (Portsmouth Athenaeum-Norris Collection 1417)
- N-30) Temporary Pier for South End of South Truss Span, Aug 7 1922 (Portsmouth Athenaeum-Norris Collection 1419)
- N-31) South Span on Concord Wharf, Aug 7 1922 (Portsmouth Athenaeum-Norris Collection 1420)
- N-32) Raising South Span on Lighters Aug 7 1922 No. 120 (Portsmouth Athenaeum-Norris Collection 1422)
- N-33) South Span at Concord Wharf (Portsmouth Athenaeum-Norris Collection PL1386)
- N-34) South Span – Showing Blocking on Lighters, Aug 12 1922. No 121 (Portsmouth Athenaeum-Norris Collection 1423)
- N-35) Moving South Span to Piers (Turning Span Around) Aug 12 1922. No. 124 (Portsmouth Athenaeum-Norris Collection 1424)
- N-36) Moving South Span to Piers (Showing Span Completely Turned) Aug 12, 1922 No. 125 (Portsmouth Athenaeum-Norris Collection 1425)
- N-37) Moving South Span to Piers (Approaching Pier) Aug 12 1922. No. 126 (Portsmouth Athenaeum-Norris Collection 1426)
- N-38) South end of South Span and Abutment, Sept 6 1922. No. 128 (Portsmouth Athenaeum-Norris Collection 1427)
- N-39) Draw Tower North Span, Sept. 6 1922, No. 129 (Portsmouth Athenaeum-Norris Collection 1428)
- N-40) Concord Wharf Preparation for Fabrication of Draw Span, Oct 1922. No. 136 (Portsmouth Athenaeum-Norris Collection 1435)
- N-41) South Span Preparation for Erection of Draw Tower, Oct 6 1922. No. 137 (Portsmouth Athenaeum-Norris Collection 1436)
- N-42) Portsmouth Approach, Oct 6 1922. No. 139 (Portsmouth Athenaeum-Norris Collection 1438)
- N-43) View from Badgers Island of North Approach, Nov 5 1922. No. 137 (Maine DOT ME 006)
- N-44) North Tower, Raising Sheave, c. 9-12/1922 (Maine DOT ME25)
- N-45) View of North and South Towers, Dec 2 1922. No. 140 (Portsmouth Athenaeum-Norris Collection 1439)
- N-46) Draw Span on Concord Wharf, Dec. 2 1922 No. 142 (Portsmouth Athenaeum-Norris Collection 1441)
- N-47) View from Portsmouth Approach, Dec 2 1922 No. 143 (Portsmouth Athenaeum-Norris Collection 1442)

Memorial Bridge Historic Structures Report

- N-48) View from Kittery Approach, Dec. 2. 1922. No.144 (Maine DOT ME 015)
- N-49) View of Portsmouth Approach, State St. left, Daniel St. to right, Dec 20, 1922 (Portsmouth Athenaeum-Norris Collection 1445)
- N-50) Memorial Bridge, Dec 20, 1922 (Portsmouth Athenaeum-Norris Collection 1448)
- N-51) View of Daniel Street toward Memorial Bridge, Dec. 20, 1922 (Portsmouth Athenaeum-Norris Collection 1449)
- N-52) View of Approach Spans and Towers Dec. 20, 1922 (Portsmouth Athenaeum-Norris Collection 1458)
- N-53) View With Lift Span In Place, Jan 4 1923 (Maine DOT ME 017)
- N-54) Draw Span looking North Showing Floor Planking Feb 5 1923 No. 156(Portsmouth Athenaeum-Norris Collection 1476)
- N-55) Draw Span Partially Raised Feb 5 1923. No. 158(Portsmouth Athenaeum-Norris Collection 1480)
- N-56) Interior of Machinery House View Looking South, Feb. 5 1923 No. 159(Portsmouth Athenaeum-Norris Collection 1481)
- N-57) Interior of Machinery House View Looking North, Feb 5 1923 No. 160(Portsmouth Athenaeum-Norris Collection 1482)
- N-58) Portsmouth Approach, April 8 1923. Neg. No. 162(Portsmouth Athenaeum-Norris Collection 1484)
- N-59) Traffic Gates View looking North, May 12 1923. Neg. No 170(Portsmouth Athenaeum-Norris Collection 1493)
- N-60) Top Surfacing of Bridge Warren Bros Contractors, May 24, 1923. Neg. No 173(Portsmouth Athenaeum-Norris Collection 1495)
- N-61) View from N. Tower of Portsmouth and Approach, Oct 29 1924 (Portsmouth Athenaeum-Norris Collection 1501)
- N-62) View of Approach and Bridge (ND) (Portsmouth Athenaeum-Norris Collection P7-62B)

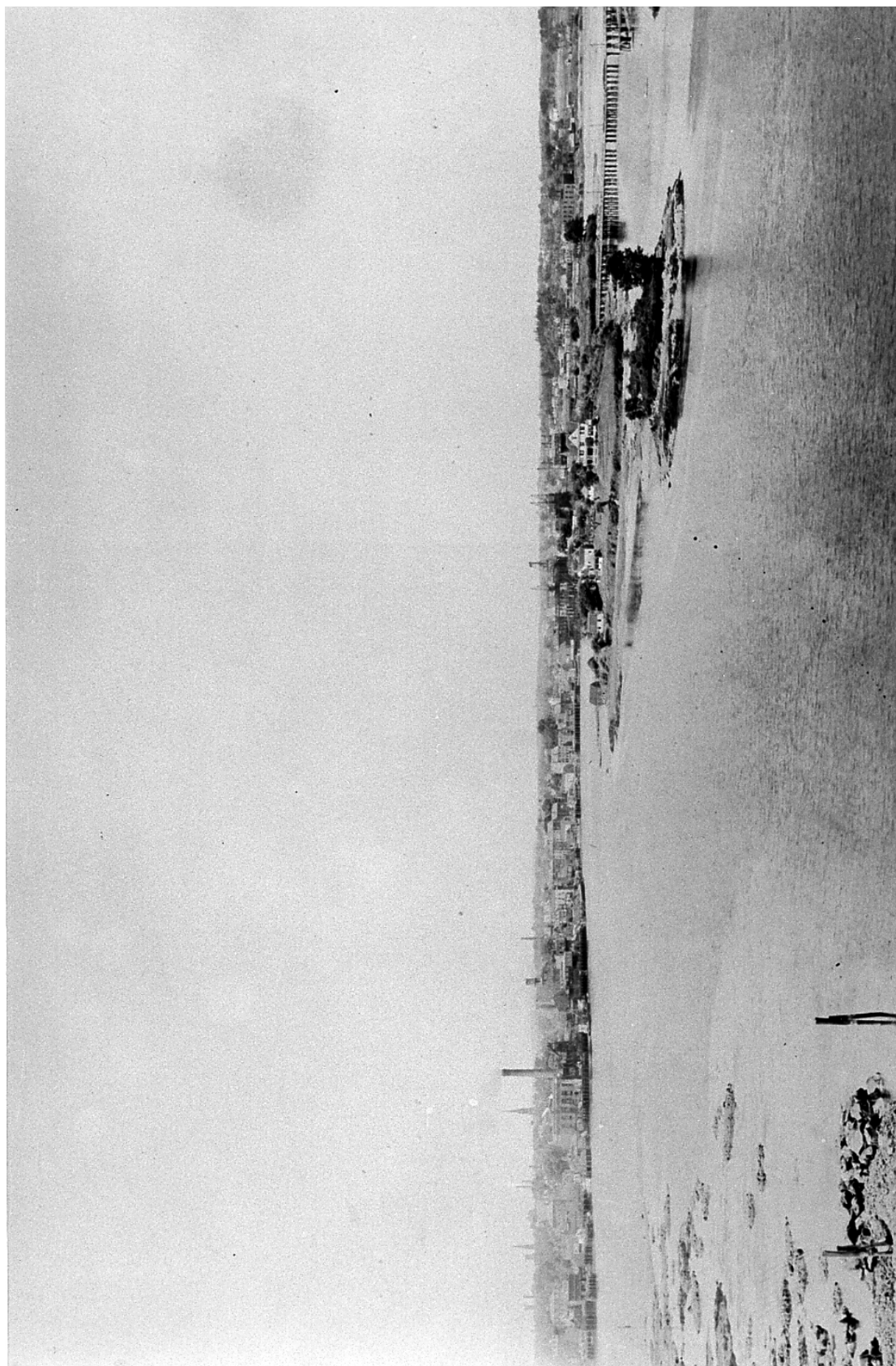
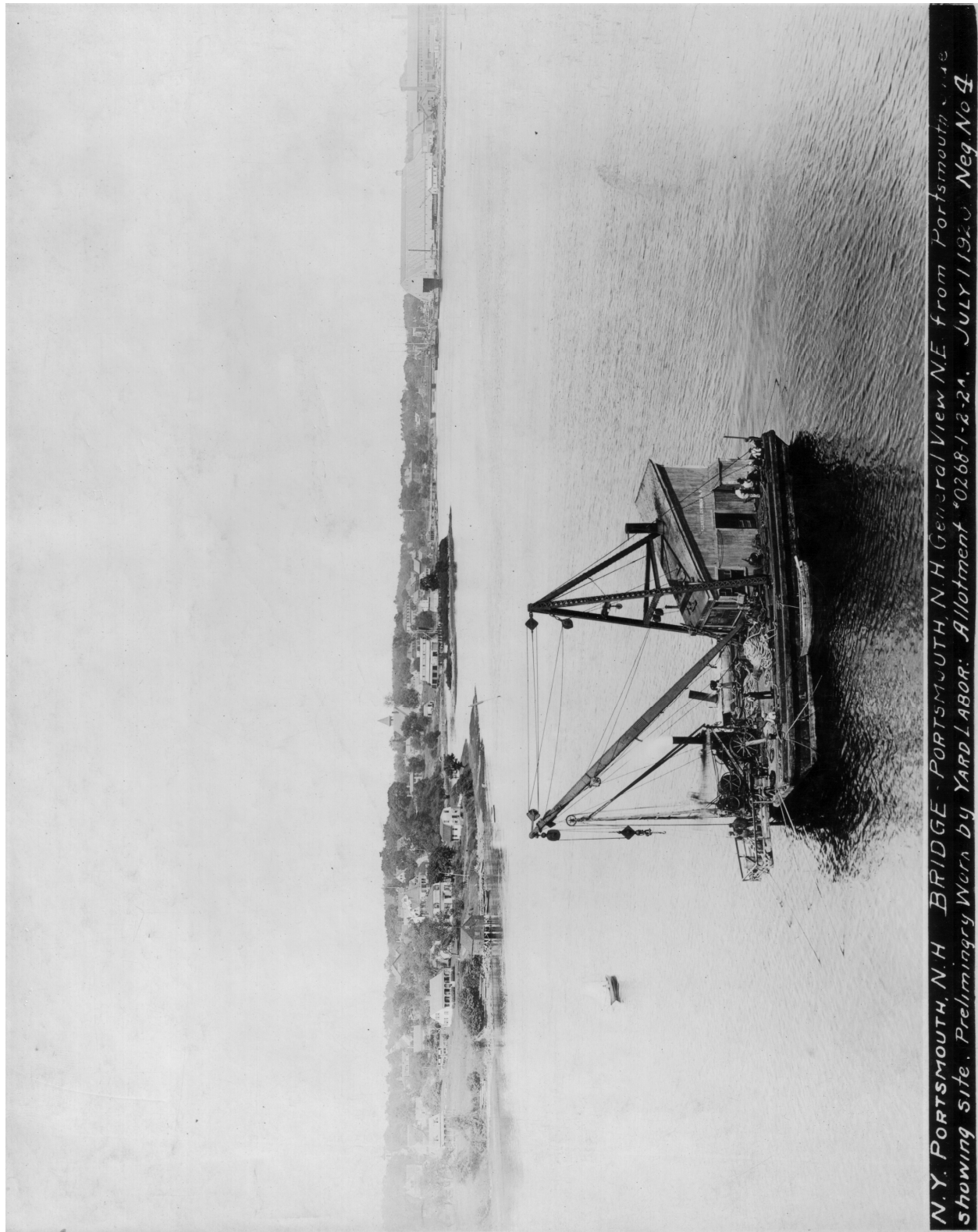


Plate N-1: View of Memorial Bridge Site and Badgers Island. Undated (c. 1920) (Maine DOT ME - 024)



N.Y. PORTSMOUTH, N.H. BRIDGE - PORTSMOUTH, N.H. General View N.E. from Portsmouth, N.H. showing site. Preliminary Work by YARD LABOR: Allotment #0268-1-2-21. JULY 1 1920 Neg. No. 4

Plate N-2: View Northeast From Portsmouth Showing Bridge Site and Preliminary Work by Navy Yard, July 1 1920. (Portsmouth Athenaeum-Norris Collection 1360) Neg. No. 4



*Plate N-3: View Looking East of Daniel Street Toward Site of Approach, Jan 5, 1921
(Portsmouth Athenaeum-Norris Collection 1363)*



Plate N-4: View Looking East of State Street Toward Site of Approach, Jan 5, 1921 (Portsmouth Athenaeum-Norris Collection 1364)



Plate N-5: Approach Site, Jan 5, 1921 (Portsmouth Athenaeum-Norris Collection 1365)



Plate N-6: Approach/South Abutment Site, Jan 5 1921 (Portsmouth Athenaeum-Norris Collection 1367)



Plate N-7: Approach/South Abutment Site, March 31921 (Portsmouth Athenaeum-Norris Collection 1373)

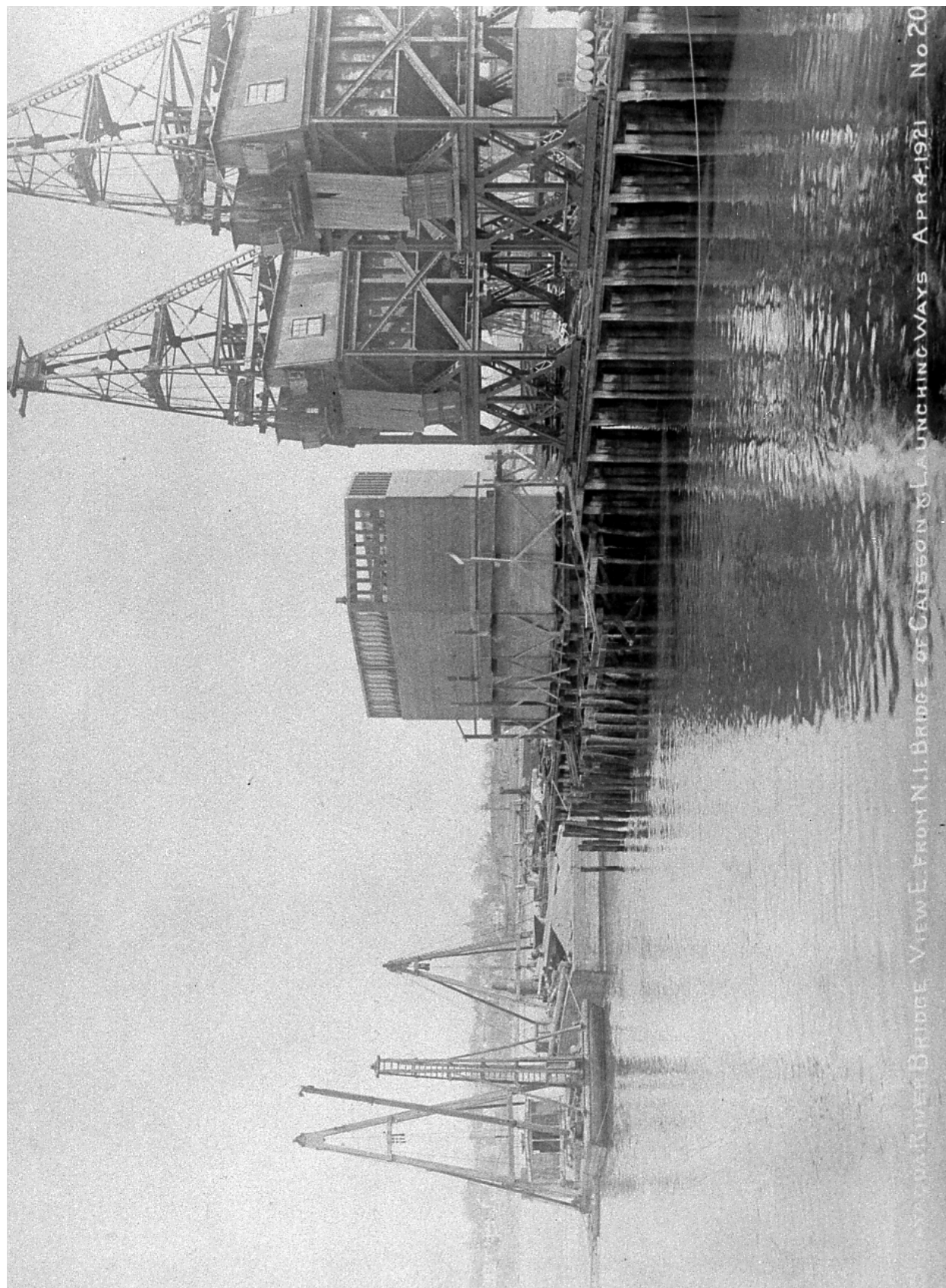


Plate N-8: View East of Caisson & Launching Ways, April 4 1921 (Maine DOT ME- 001)

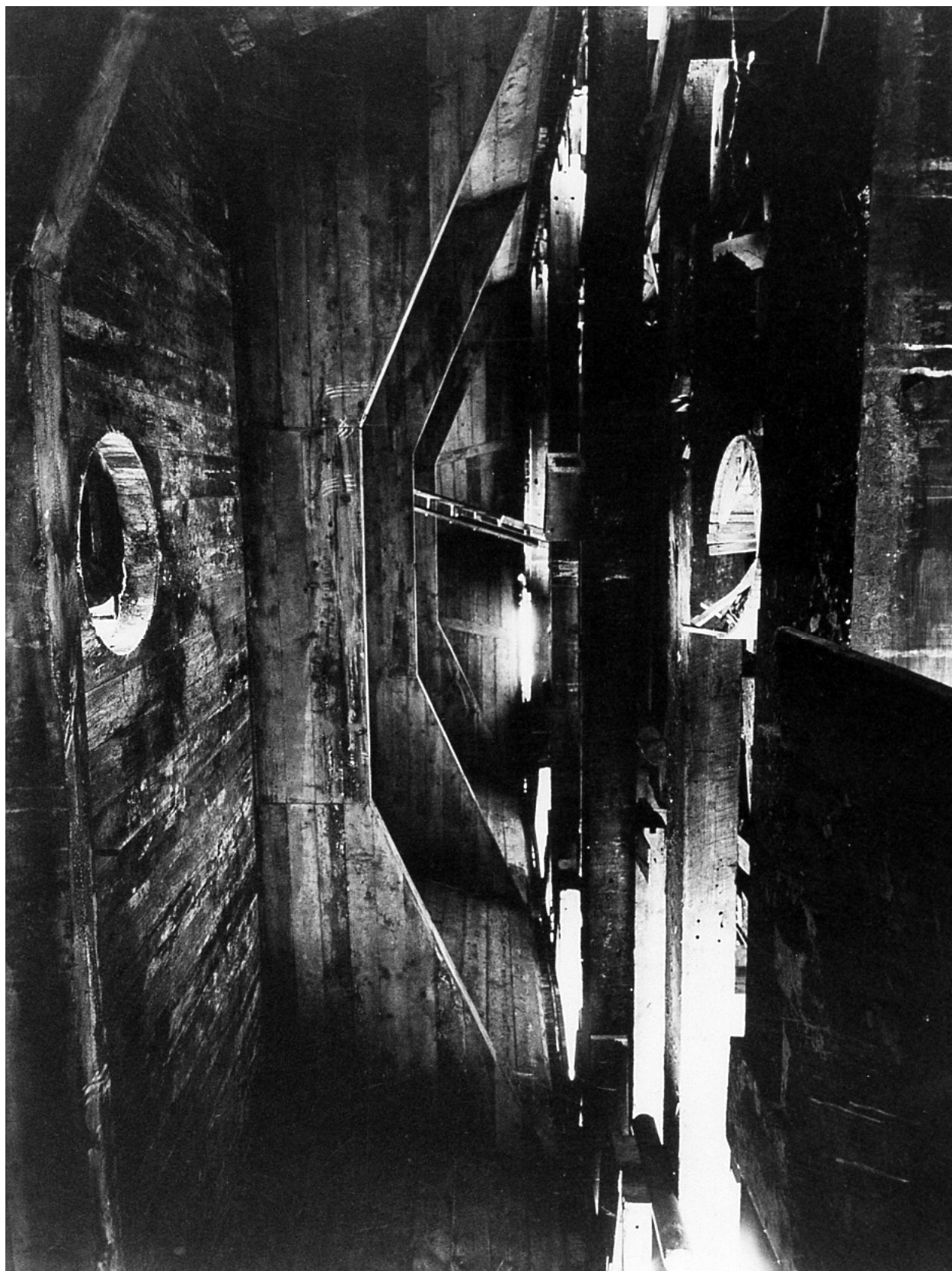


Plate N-9: Working Chamber Inside Caisson, April 4 1921 (Maine DOT ME- 025)

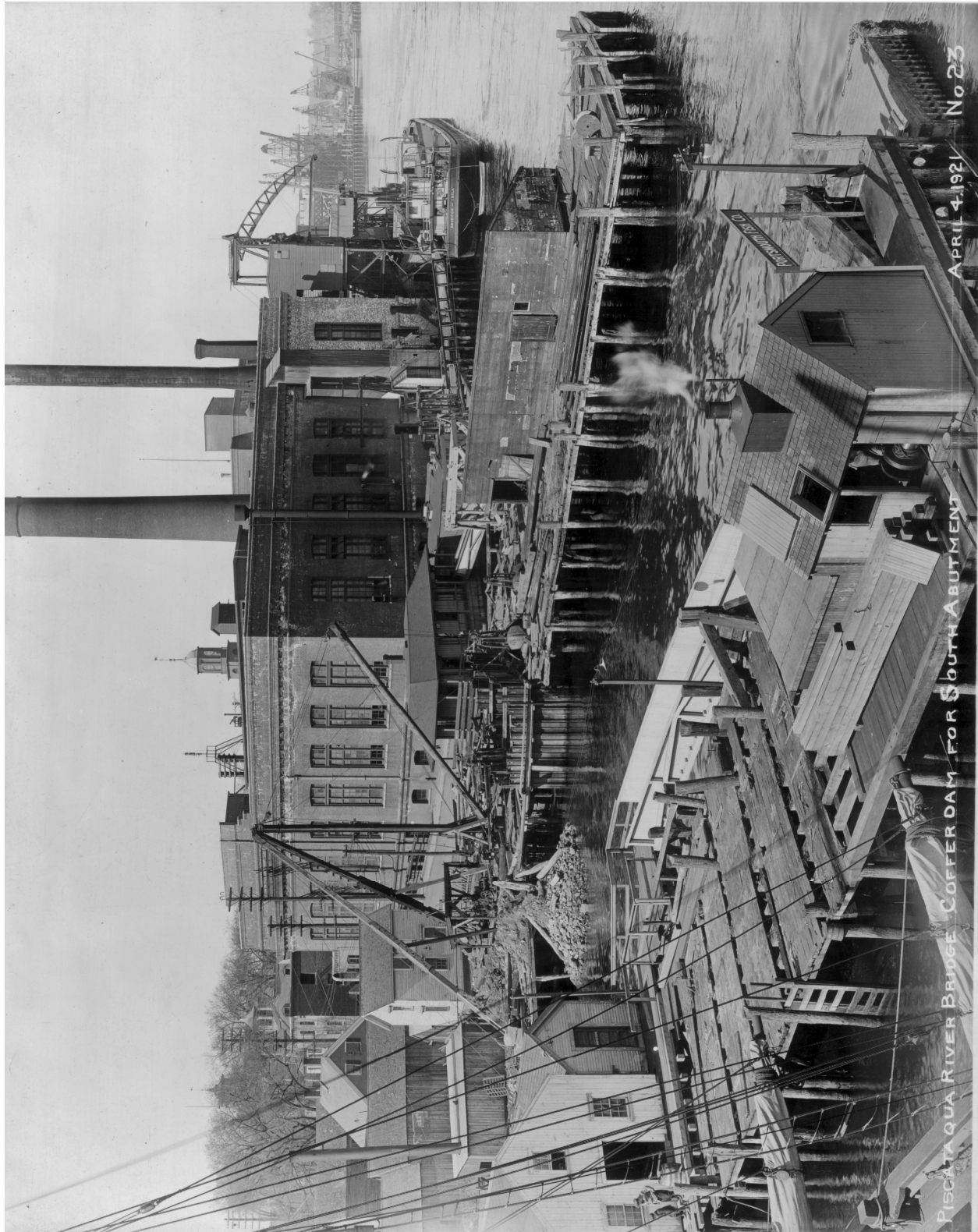


Plate N-10: Cofferdam for South Abutment, April 4 1921 (Portsmouth Athenaeum-Norris Collection 1374)



Plate N-11: Launching of Caisson for North Pier, April 21, 1921 (Maine DOT ME026)

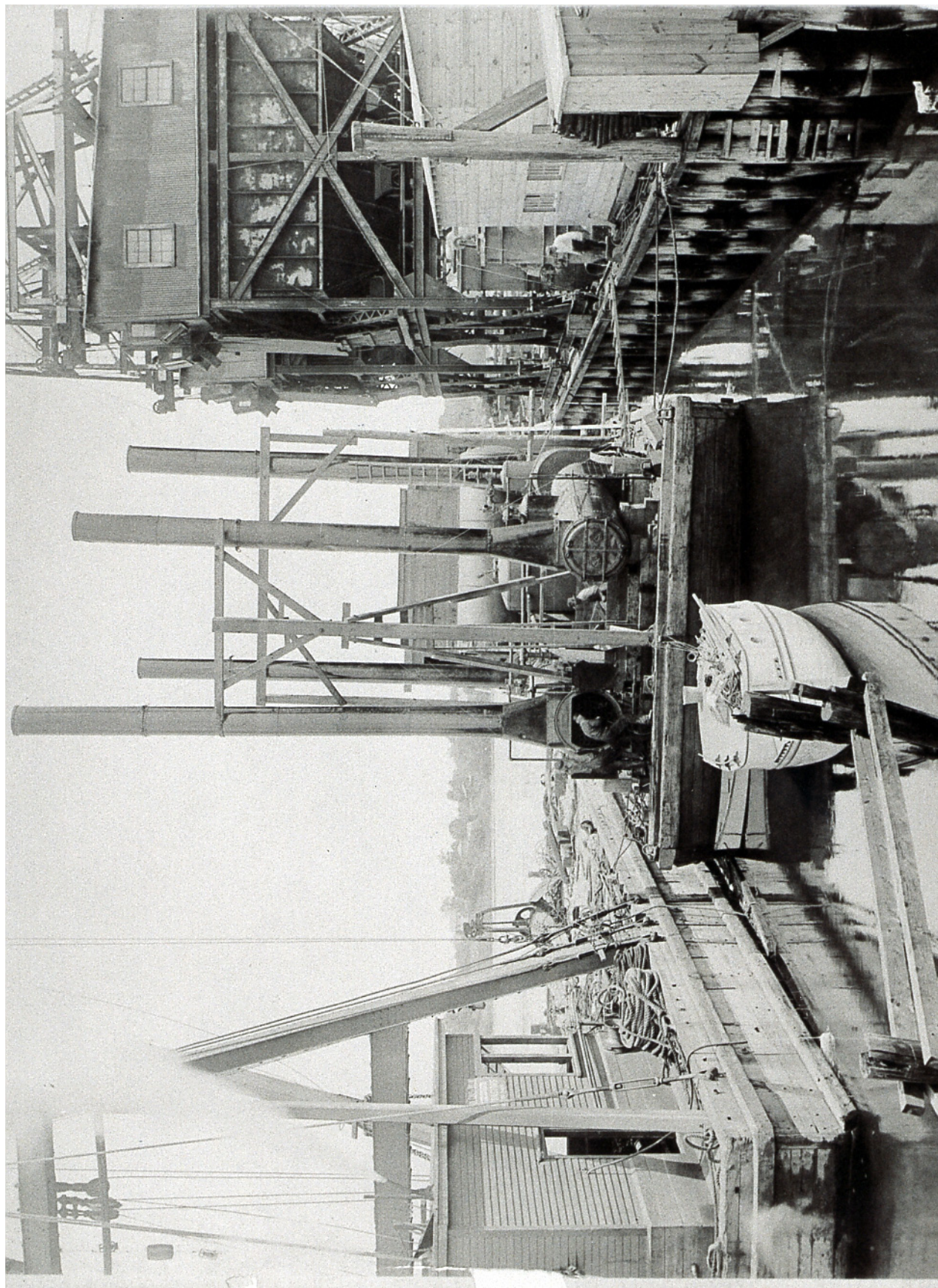


Plate N-12: Fitting up Scow for Compressed Air Plant, June 4, 1921 (Maine DOT ME 08)



Plate N-13: Compressed Air plant (ND) (Portsmouth Athenaeum-Norris Collection 1392)

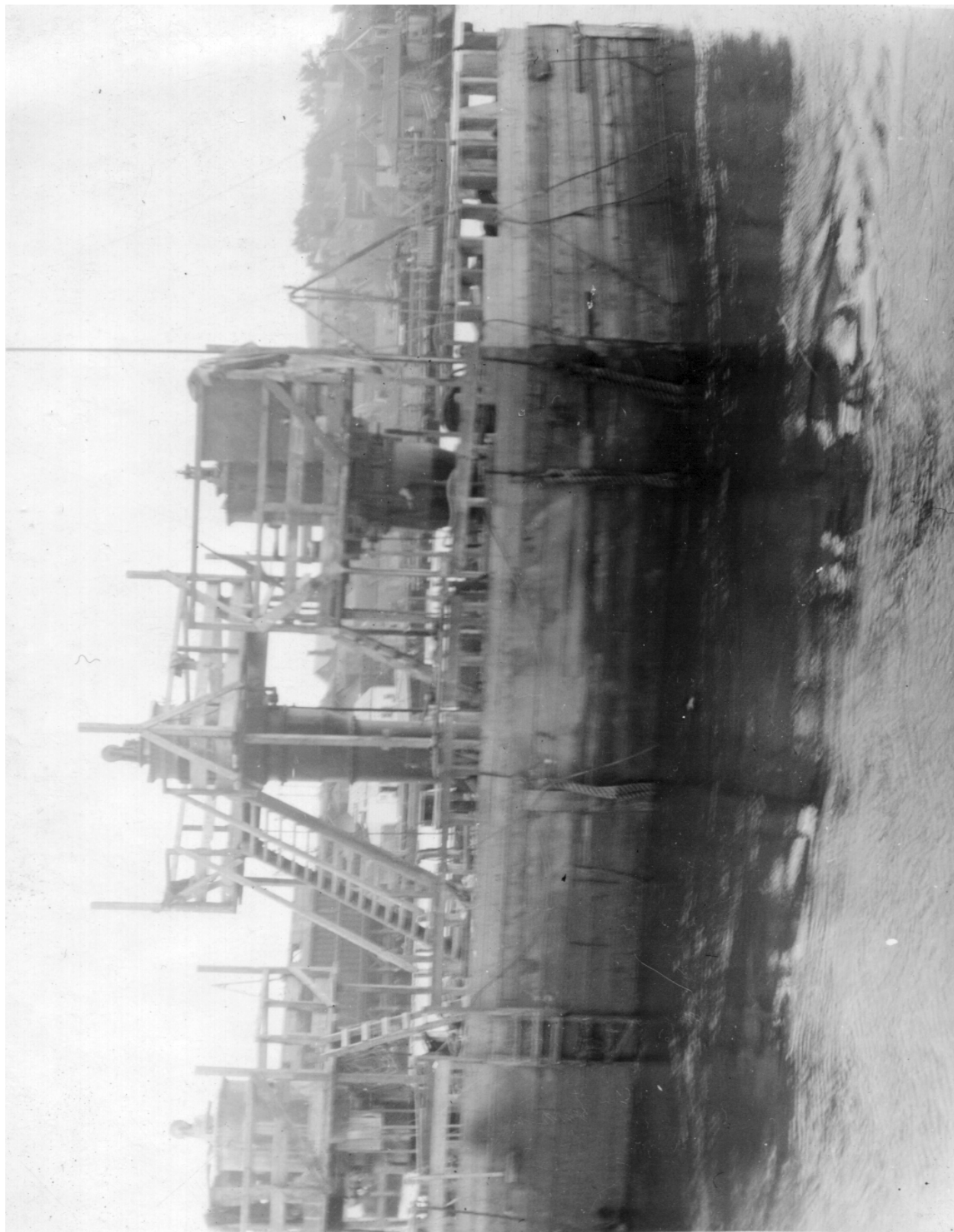


Plate N-14: Compressed Air plant (ND) (Portsmouth Athenaeum-Norris Collection 1393)

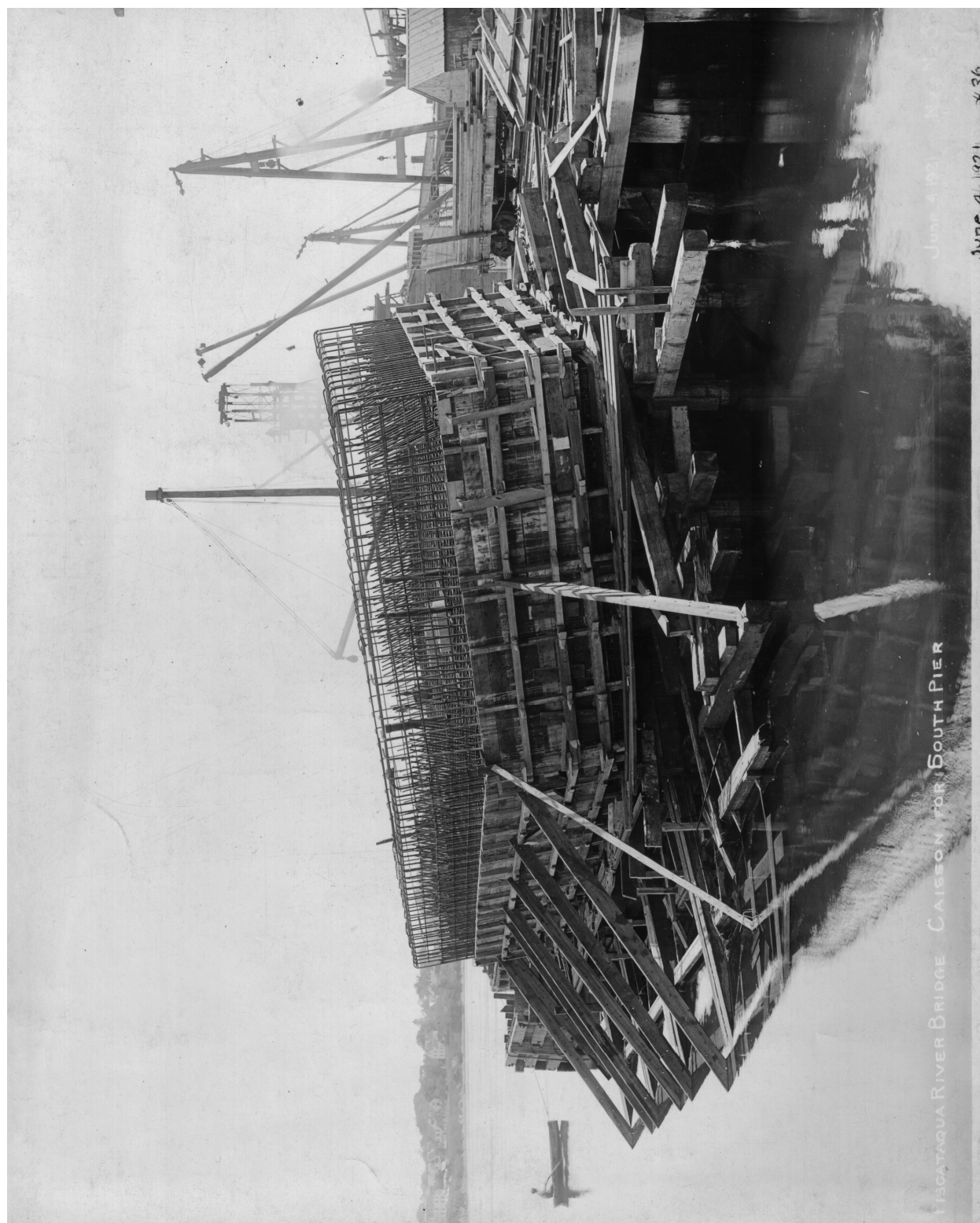


Plate N-15: Caisson for South Pier, June 4 1921 (Portsmouth Athenaeum-Norris Collection 1380)



Plate N-16: Caisson for South Abutment, July 5, 1921 (Portsmouth Athenaeum-Norris Collection 1382)



Plate N-17: Caisson for South Abutment, July 5, 1921 (Portsmouth Athenaeum-Norris Collection 1383)



Plate N-18: Caisson for South Pier, July 5, 1921 (Portsmouth Athenaeum-Norris Collection 1385)



Plate N-19: View East of Bridge site, Sept 22 1921 (Maine DOT ME#25)



Plate N-20: View Southwest of North Abutment, Nov 14 1921 (Maine DOT ME 023)

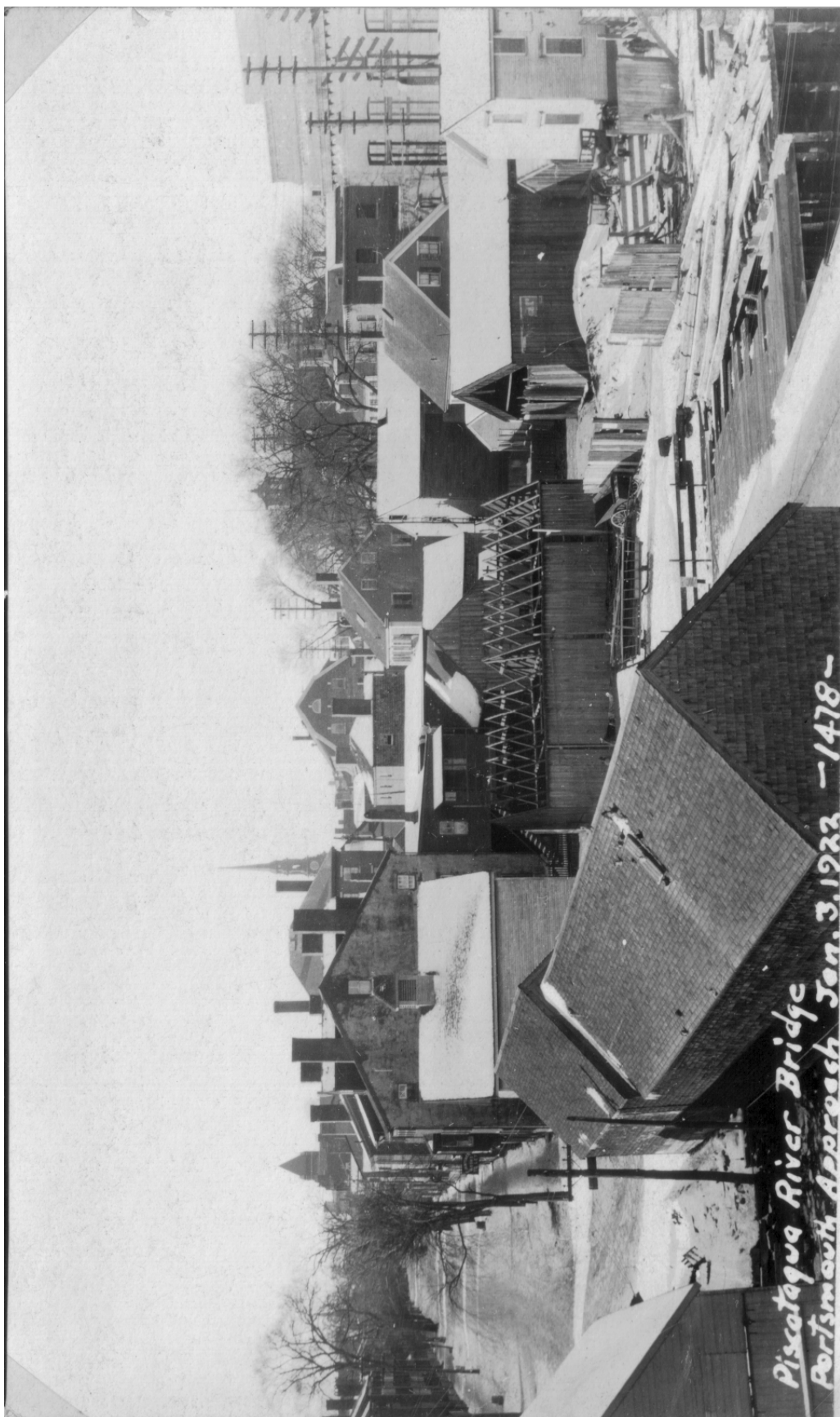


Plate N-21: Approach Site, Jan 3 1922 (Portsmouth Athenaeum-Norris Collection 1388)

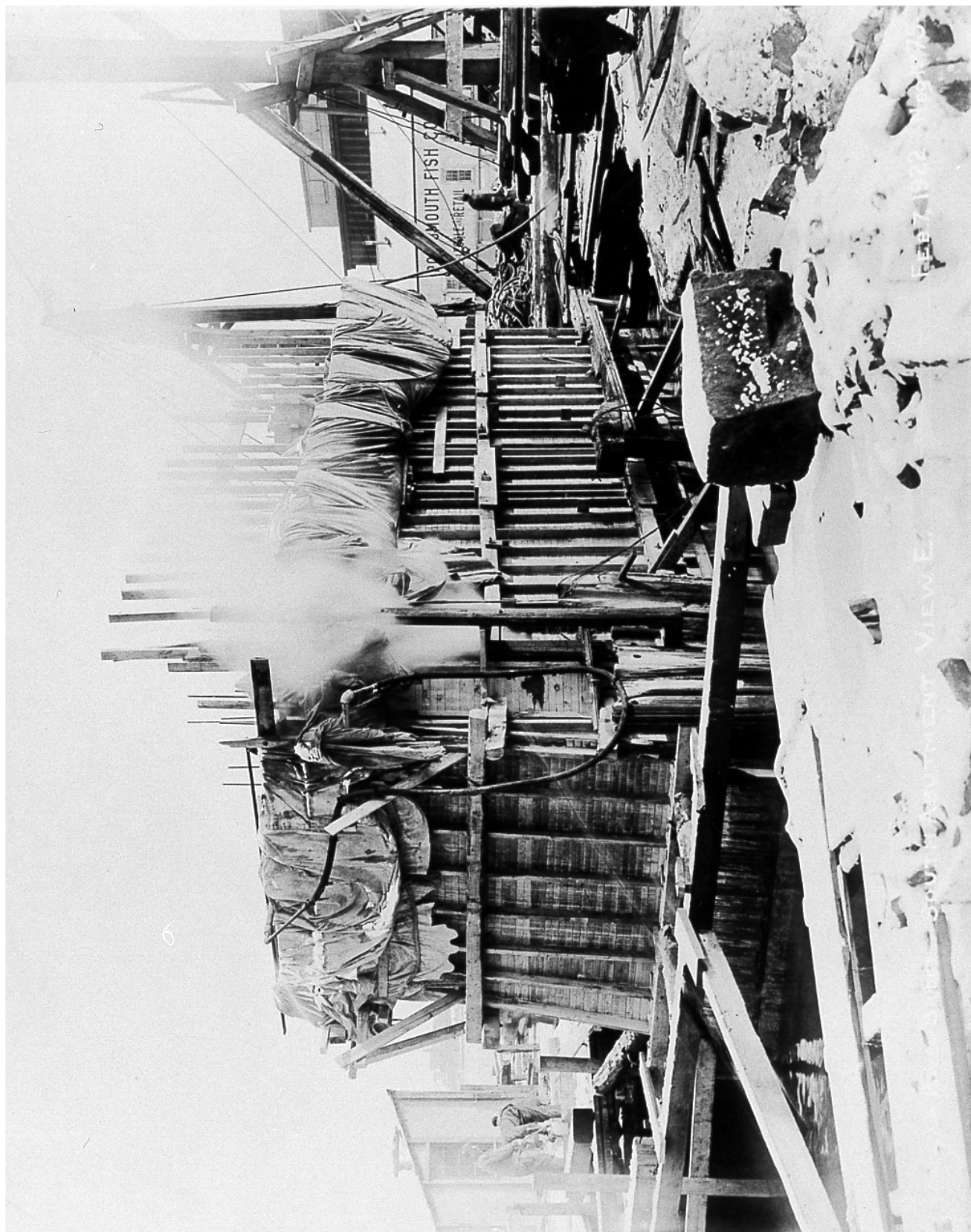


Plate N-22: South Abutment View East, Feb 7, 1922 (Maine DOT ME016)



Plate N-23: View South From Badgers Island, Feb 7, 1922 (Maine DOT ME007)

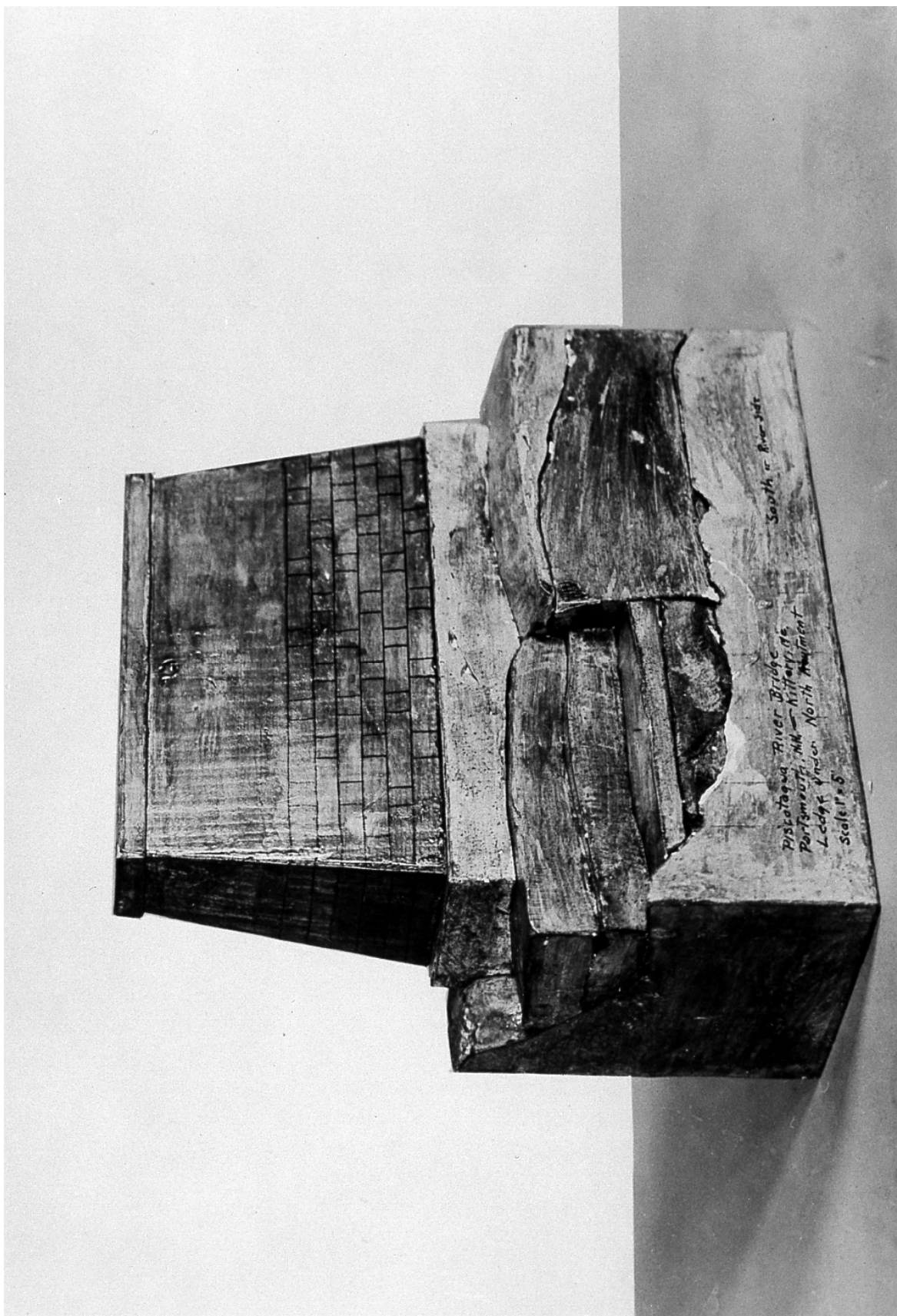


Plate N-24: Model of North Abutment, c. March 1922 (Maine DOT ME002)



Plate N-25: Concrete Forms for Approach, May 1 1922 (Portsmouth Athenaeum-Norris Collection 1399)



Plate N-26: North Truss Span Lighters for Moving, June 9 1922 (Maine DOT ME 022)

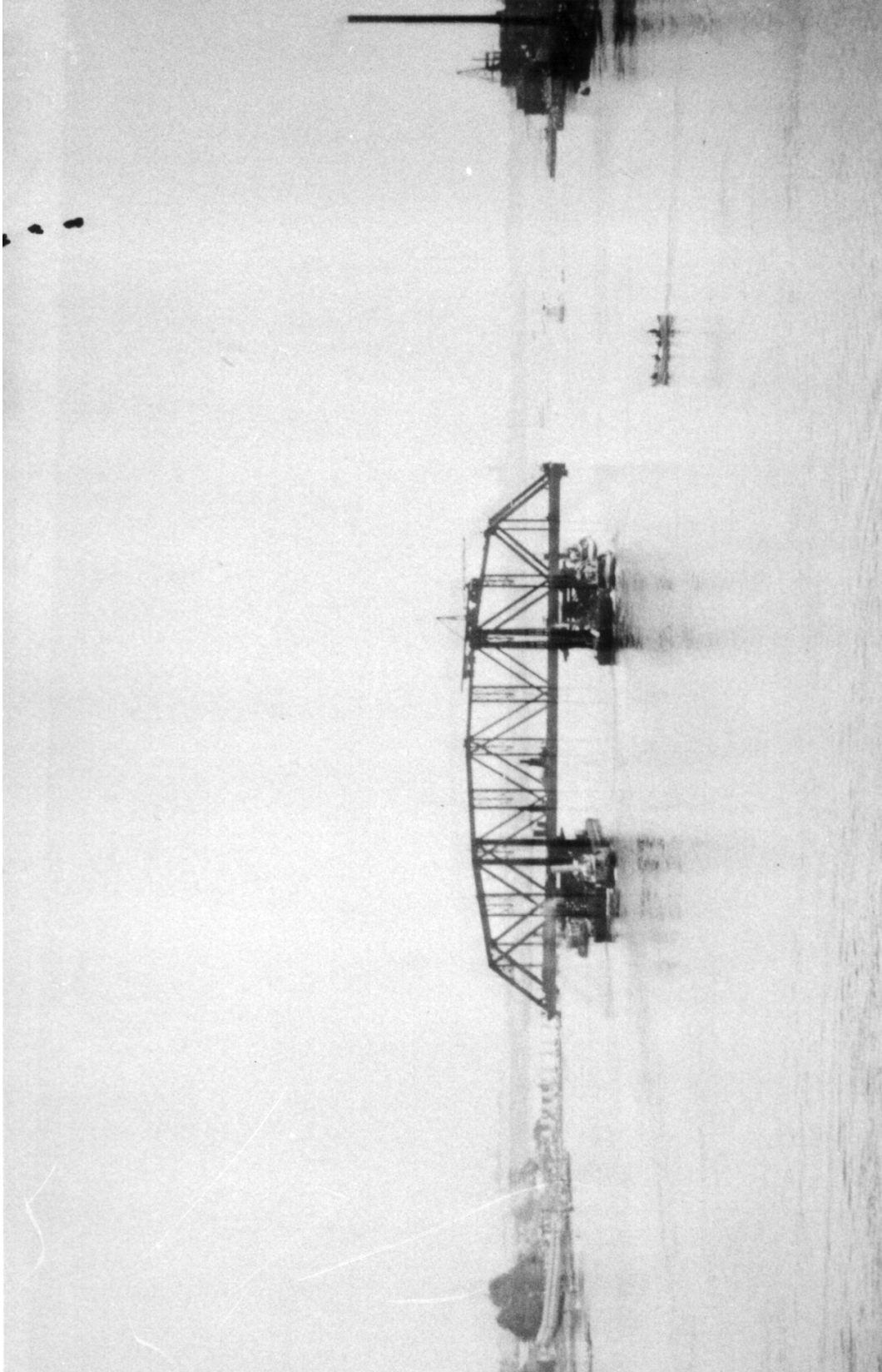


Plate N-27: Moving North Span, July 8 1922 (Portsmouth Athenaeum-Norris Collection PG-158A)



Plate N-28: Placing North Span, July 8 1922 (Portsmouth Athenaeum-Norris Collection PG 158B)



Plate N-29: Temporary Pier for South End of South Truss Span, Aug 7 1922 (Portsmouth Athenaeum-Norris Collection 1417)

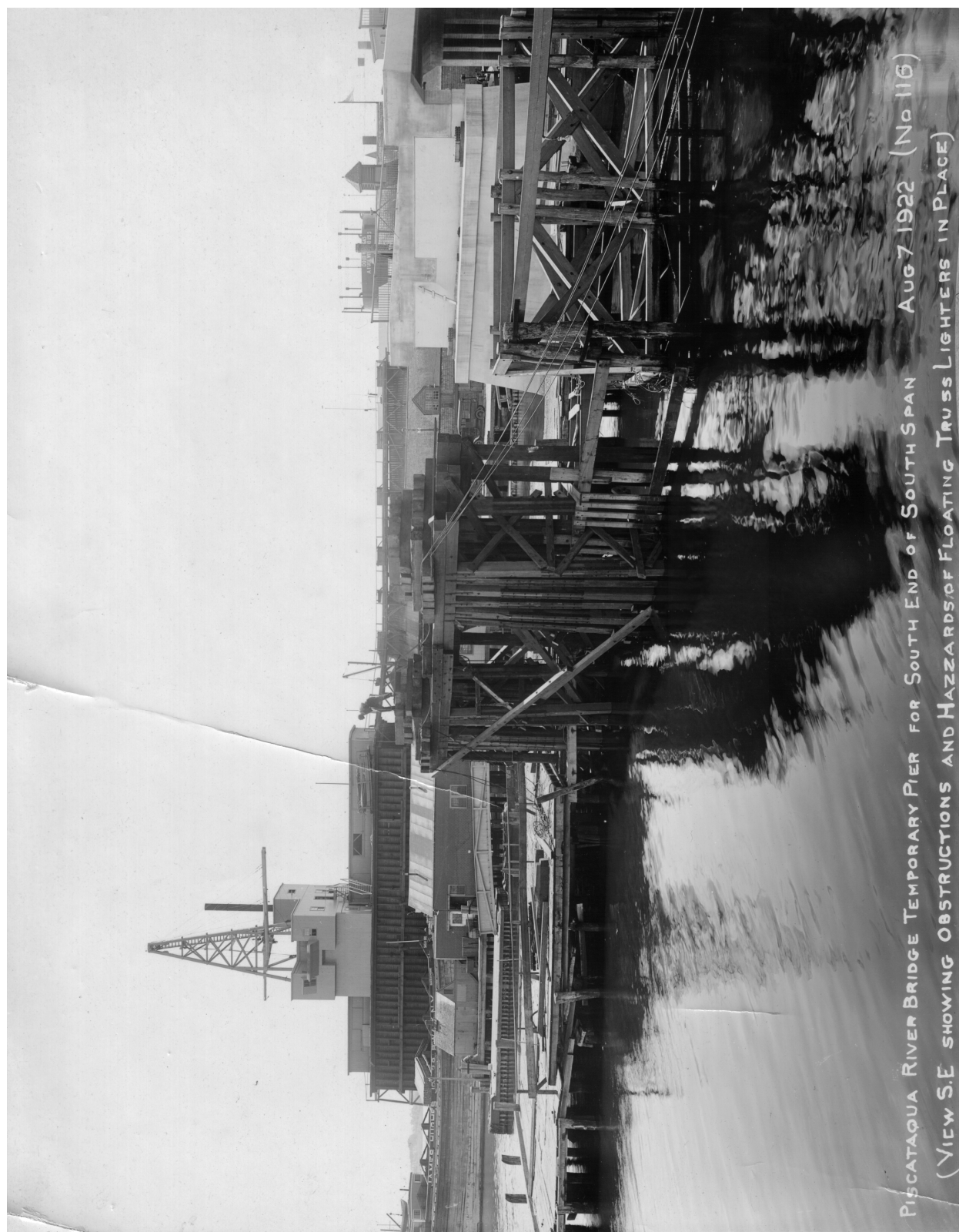


Plate N-30: Temporary Pier for South End of South Truss Span, Aug 7 1922 (Portsmouth Athenaeum-Norris Collection 1419)



Plate N-31: South Span on Concord Wharf, Aug 7 1922 (Portsmouth Athenaeum-Norris Collection 1420)



Plate N-32: Raising South Span on Lighters Aug 7 1922 No. 120 (Portsmouth Athenaeum-Norris Collection 1422)

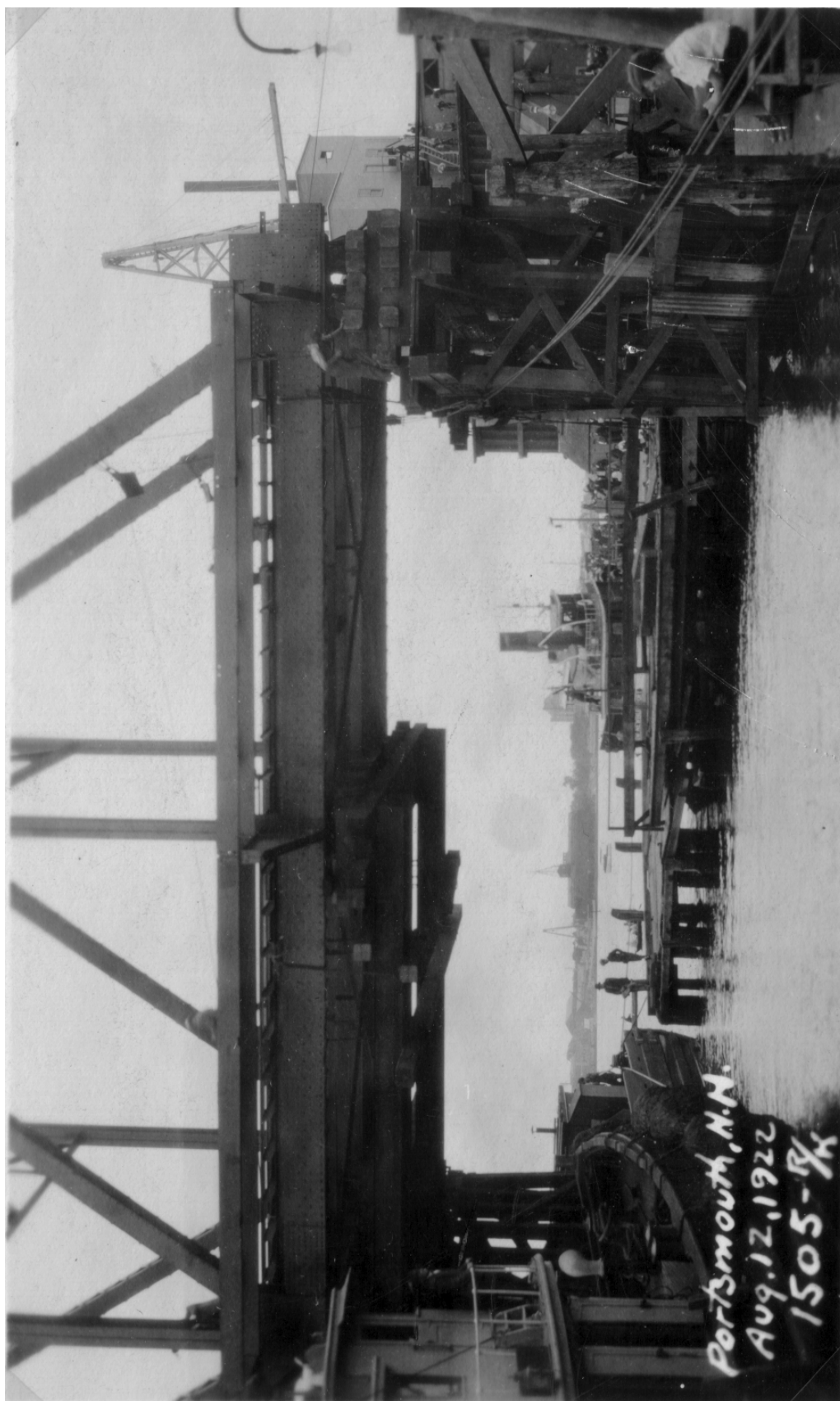
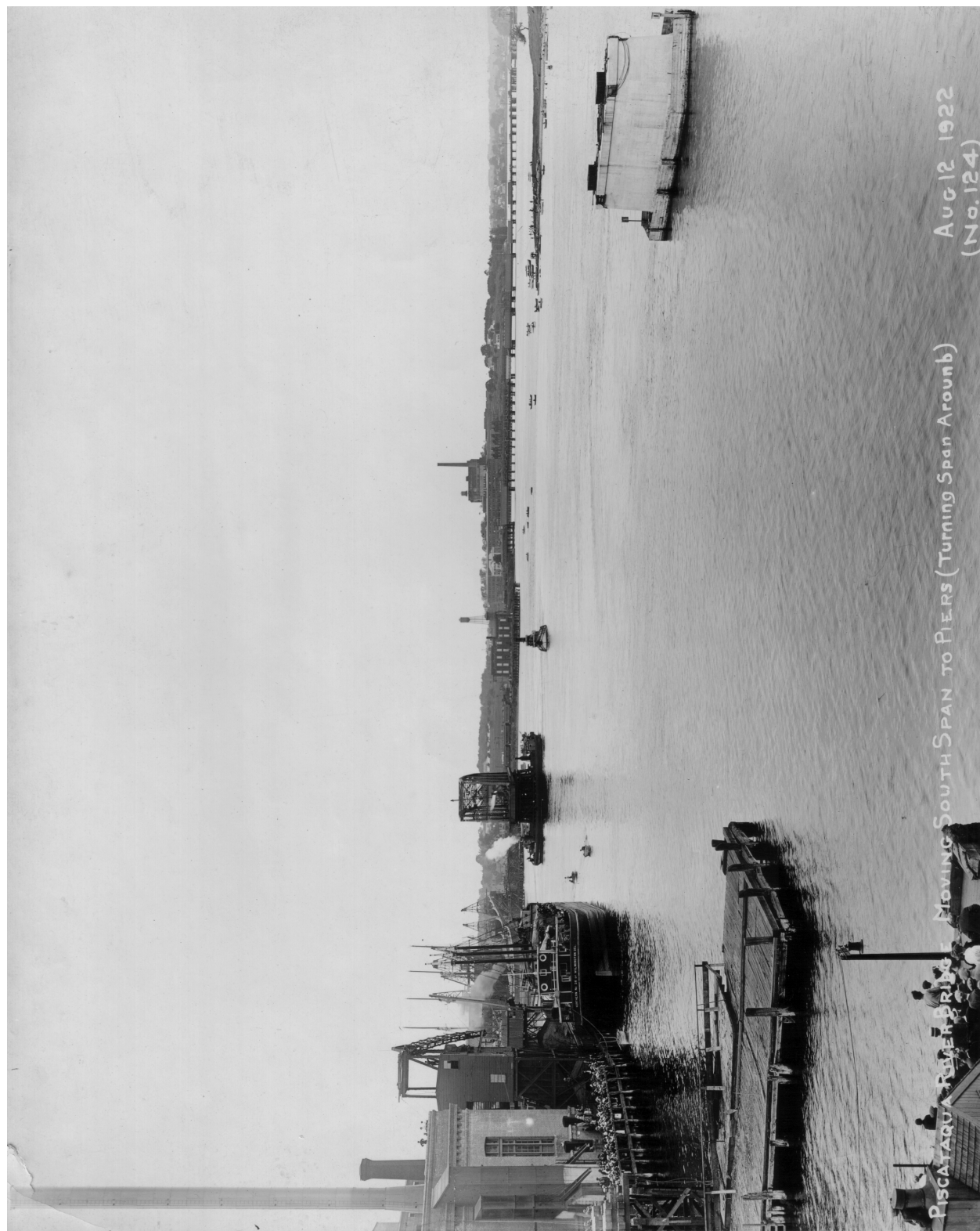


Plate N-33: South Span at Concord Wharf (Portsmouth Athenaeum-Norris Collection PL1386)



Plate N-34: South Span – Showing Blocking on Lighters, Aug 12 1922. No 121(Portsmouth Athenaeum-Norris Collection 1423)



*Plate N-35: Moving South Span to Piers (Turning Span Around) Aug 12 1922. No. 124
(Portsmouth Athenaeum-Norris Collection 1424)*



Plate N-36: Moving South Span to Piers (Showing Span Completely Turned) Aug 12, 1922 No. 125 (Portsmouth Athenaeum-Norris Collection 1425)

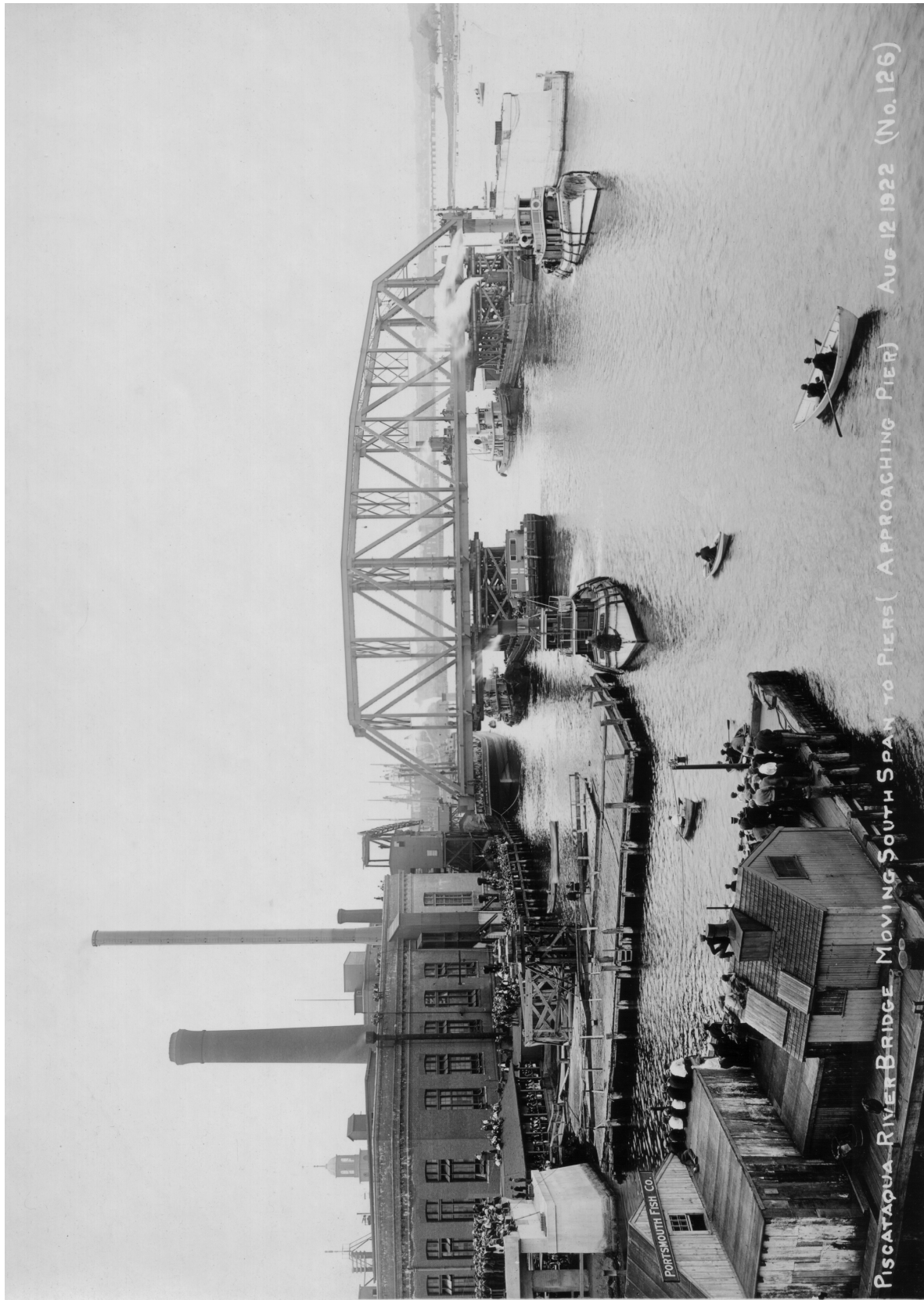


Plate N-37: Moving South Span to Piers (Approaching Pier) Aug 12 1922. No. 126 (Portsmouth Athenaeum-Norris Collection 1426)



Plate N-38: South end of South Span and Abutment, Sept 6 1922. No. 128 (Portsmouth Athenaeum-Norris Collection 1427)



Plate N-39: Draw Tower North Span, Sept. 6 1922, No. 129 (Portsmouth Athenaeum-Norris Collection 1428)



*Plate N-40: Concord Wharf Preparation for Fabrication of Draw Span, Oct 1922. No. 136
(Portsmouth Athenaeum-Norris Collection 1435)*

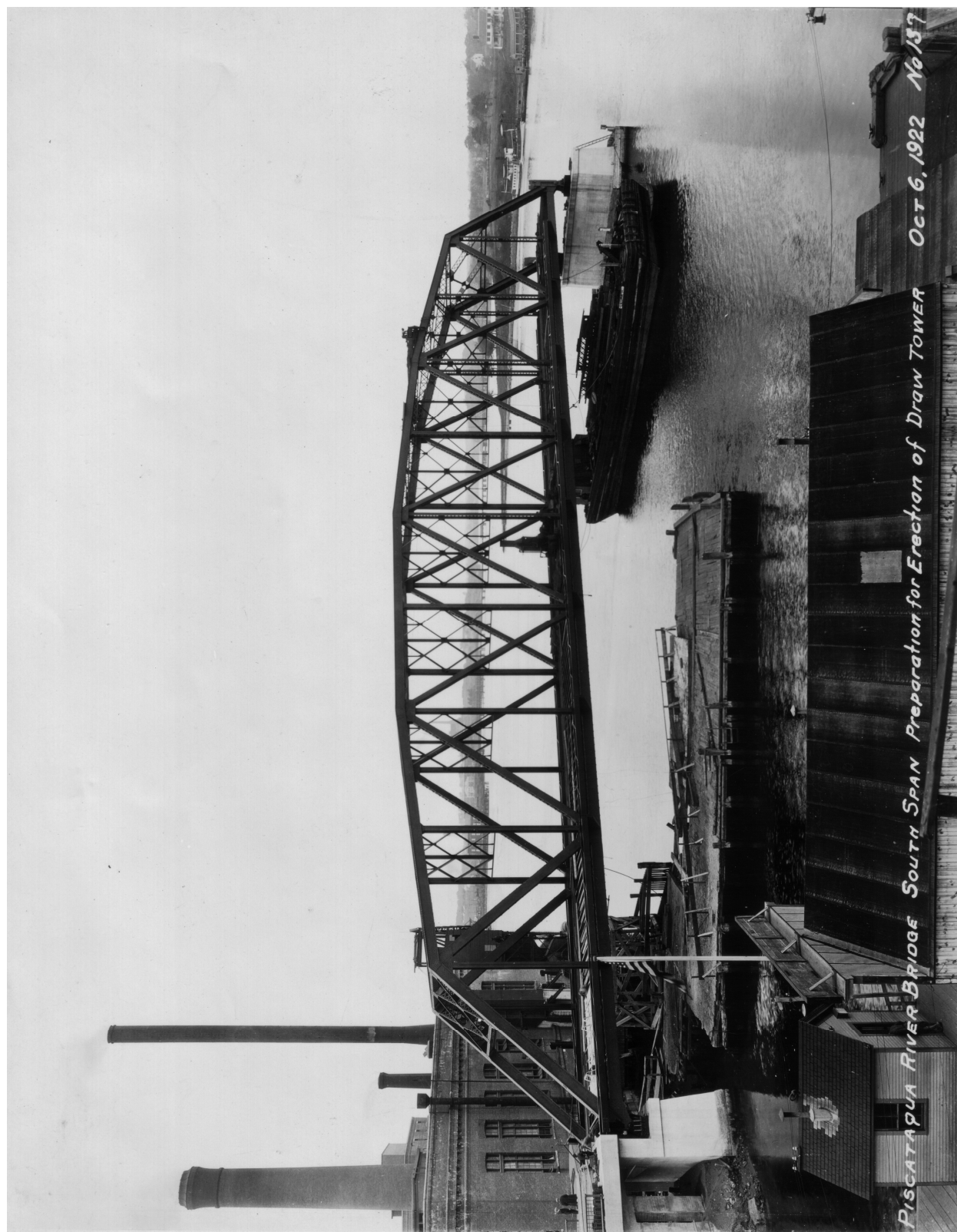


Plate N-41: South Span Preparation for Erection of Draw Tower, Oct 6 1922. No. 137(Portsmouth Athenaeum-Norris Collection 1436)

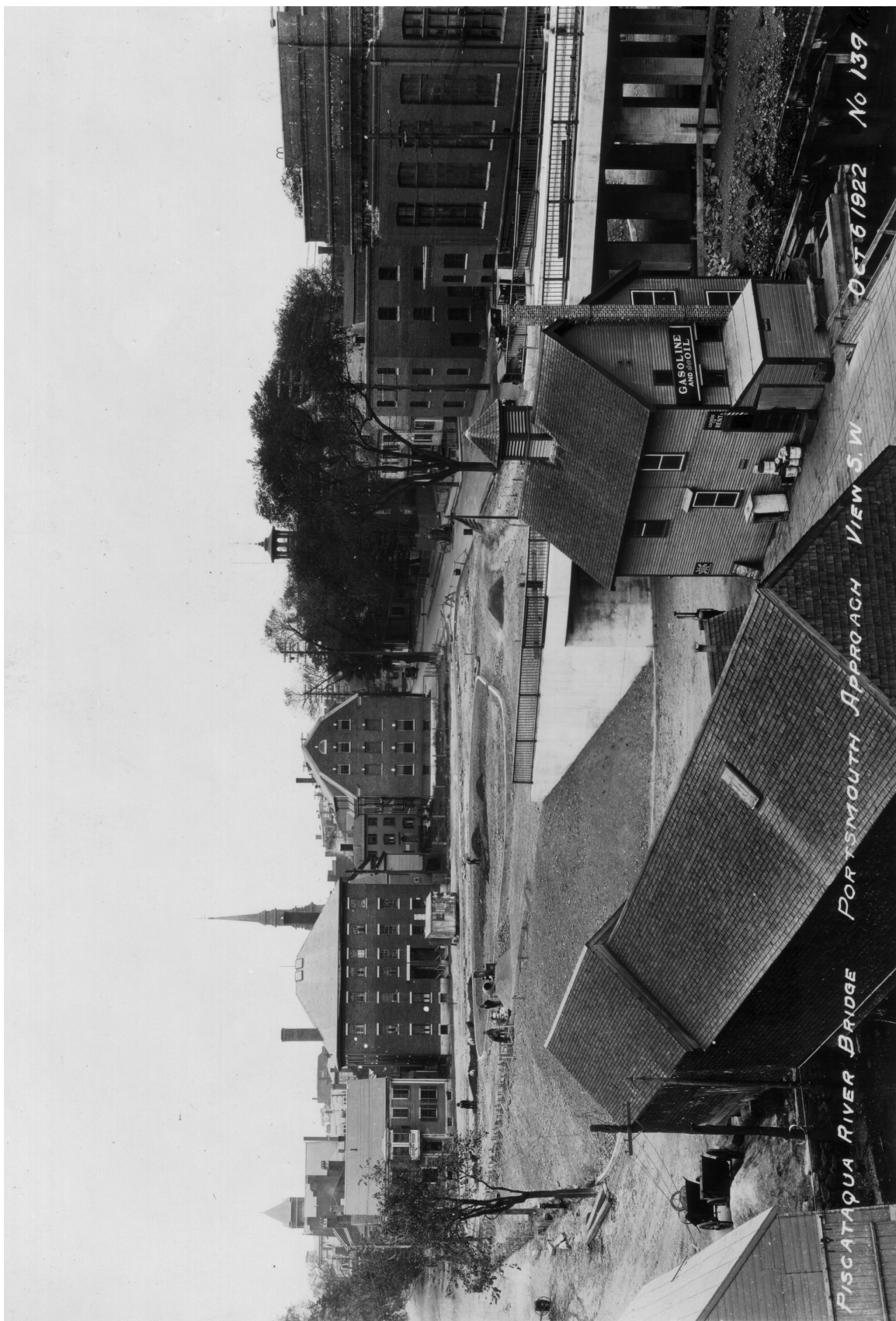


Plate N-42: Portsmouth Approach, Oct 6 1922. No. 139 (Portsmouth Athenaeum-Norris Collection 1438)

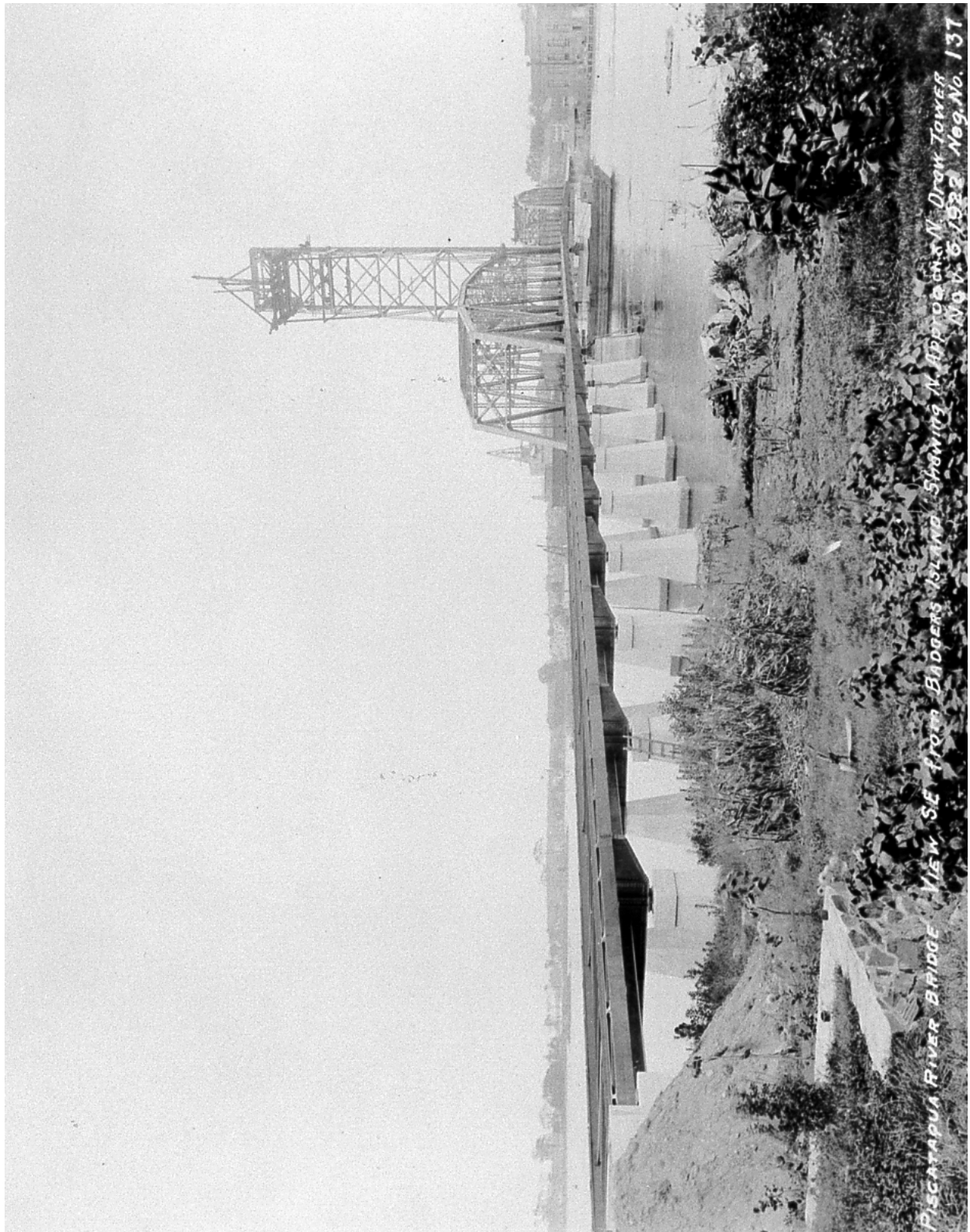


Plate N-43: View from Badgers Island of North Approach, Nov 5 1922. No. 137(Maine DOT ME 006)

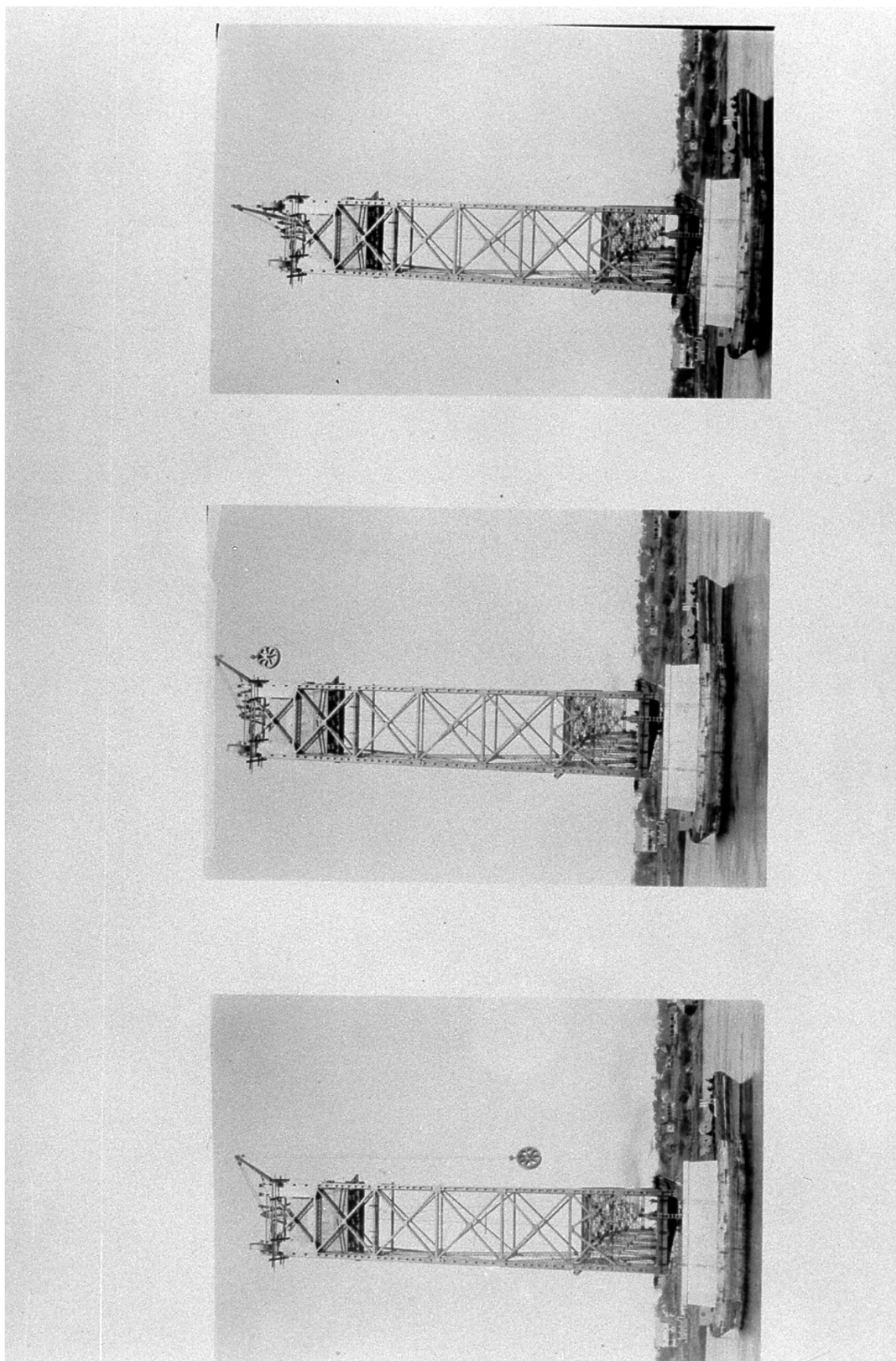


Plate N-44: North Tower, Raising Sheave, c. 9-12/1922 (Maine DOT ME25)

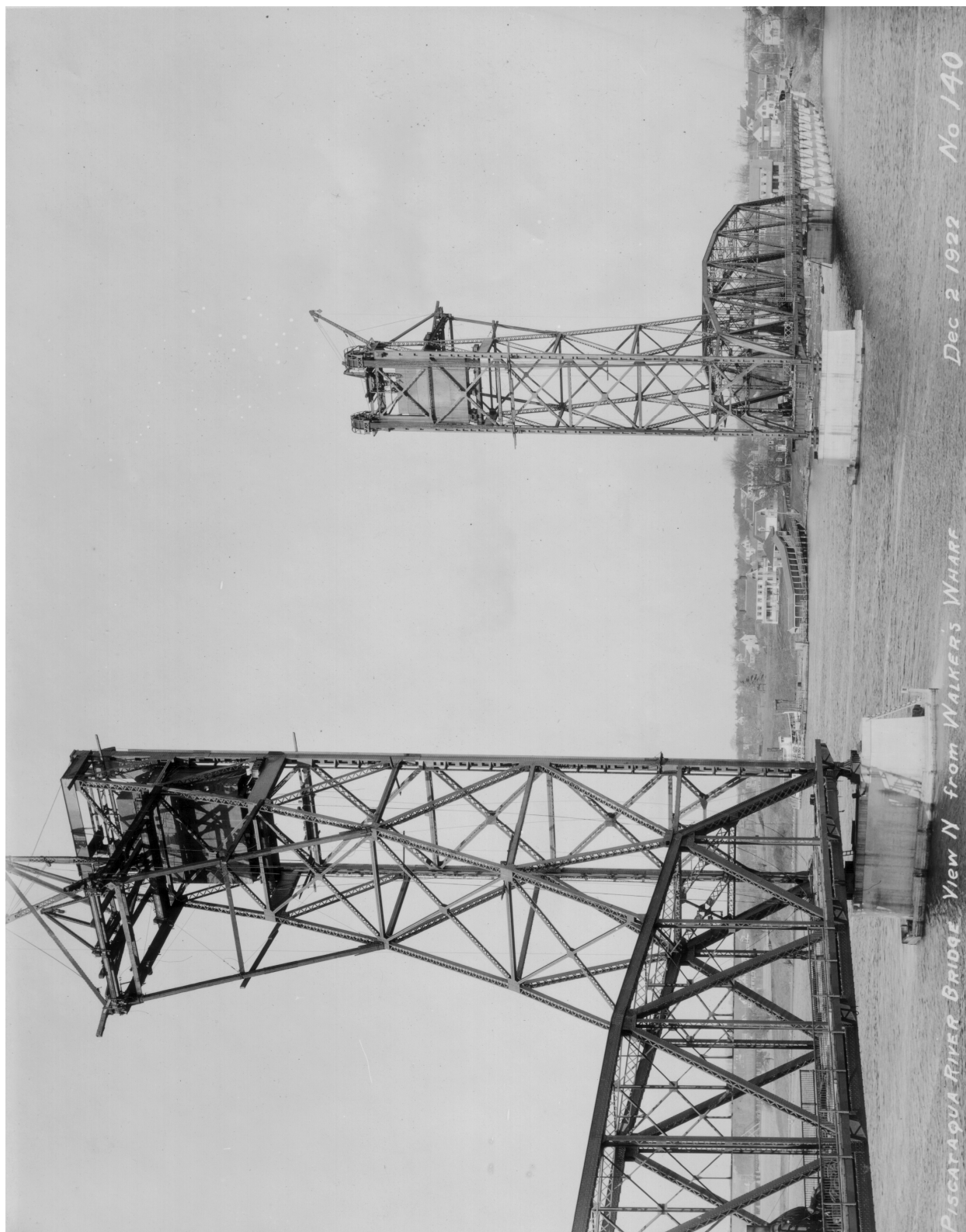


Plate N-45: View of North and South Towers, Dec 2 1922. No. 140 (Portsmouth Athenaeum-Norris Collection 1439)



Plate N-46: Draw Span on Concord Wharf, Dec. 2 1922 No. 142 (Portsmouth Athenaeum-Norris Collection 1441)



Plate N-47: View from Portsmouth Approach, Dec 2 1922 No. 143 (Portsmouth Athenaeum-Norris Collection 1442)

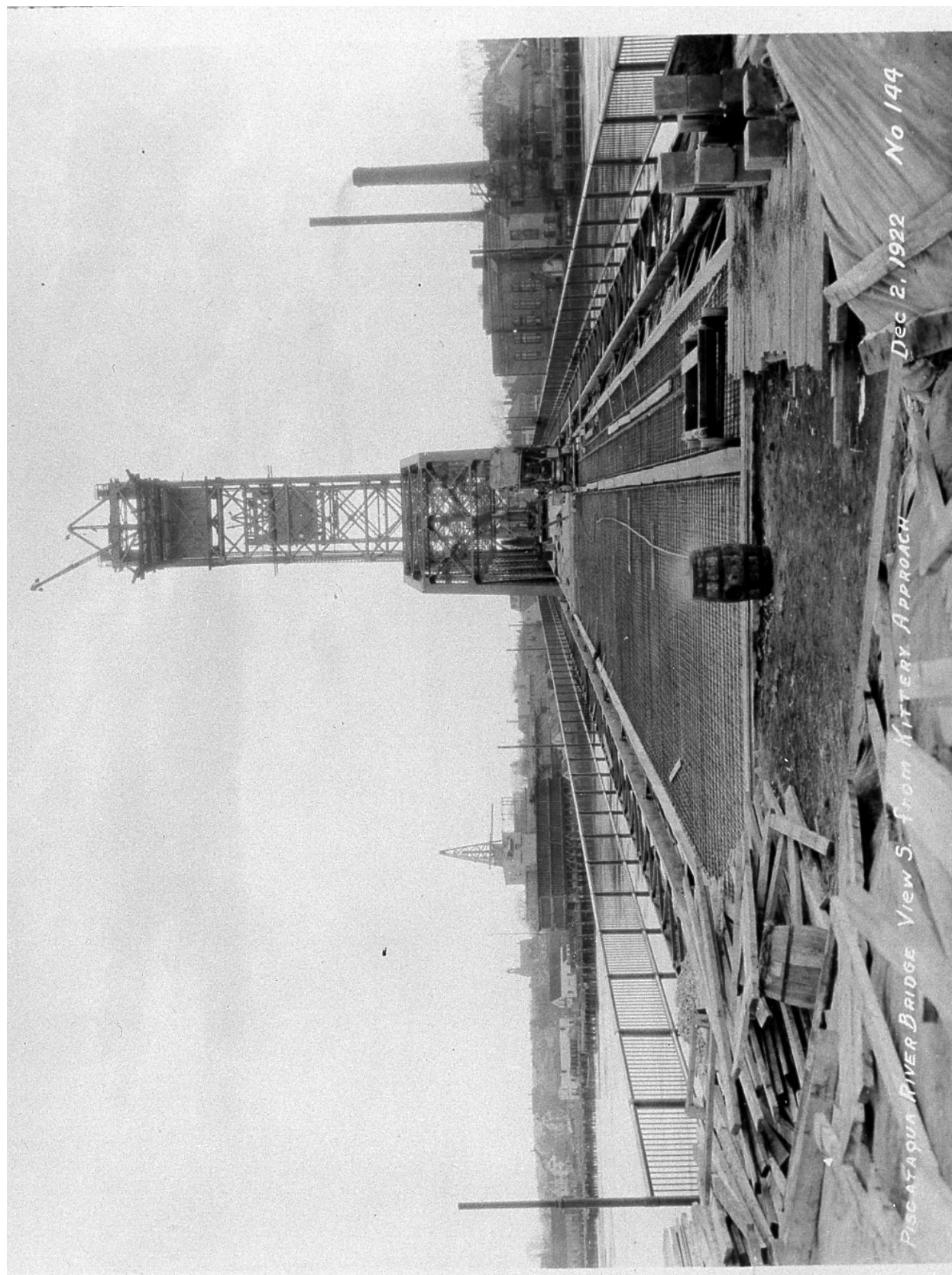


Plate N-48: View from Kittery Approach, Dec. 2, 1922. No.144 (Maine DOT ME 015)



*Plate N-49: View of Portsmouth Approach, State St. left, Daniel St. to right, Dec 20, 1922
(Portsmouth Athenaeum-Norris Collection 1445)*



Plate N-50: Memorial Bridge, Dec 20, 1922 (Portsmouth Athenaeum-Norris Collection 1448)



Plate N-51: View of Daniel Street toward Memorial Bridge, Dec. 20, 1922 (Portsmouth Athenaeum-Norris Collection 1449)

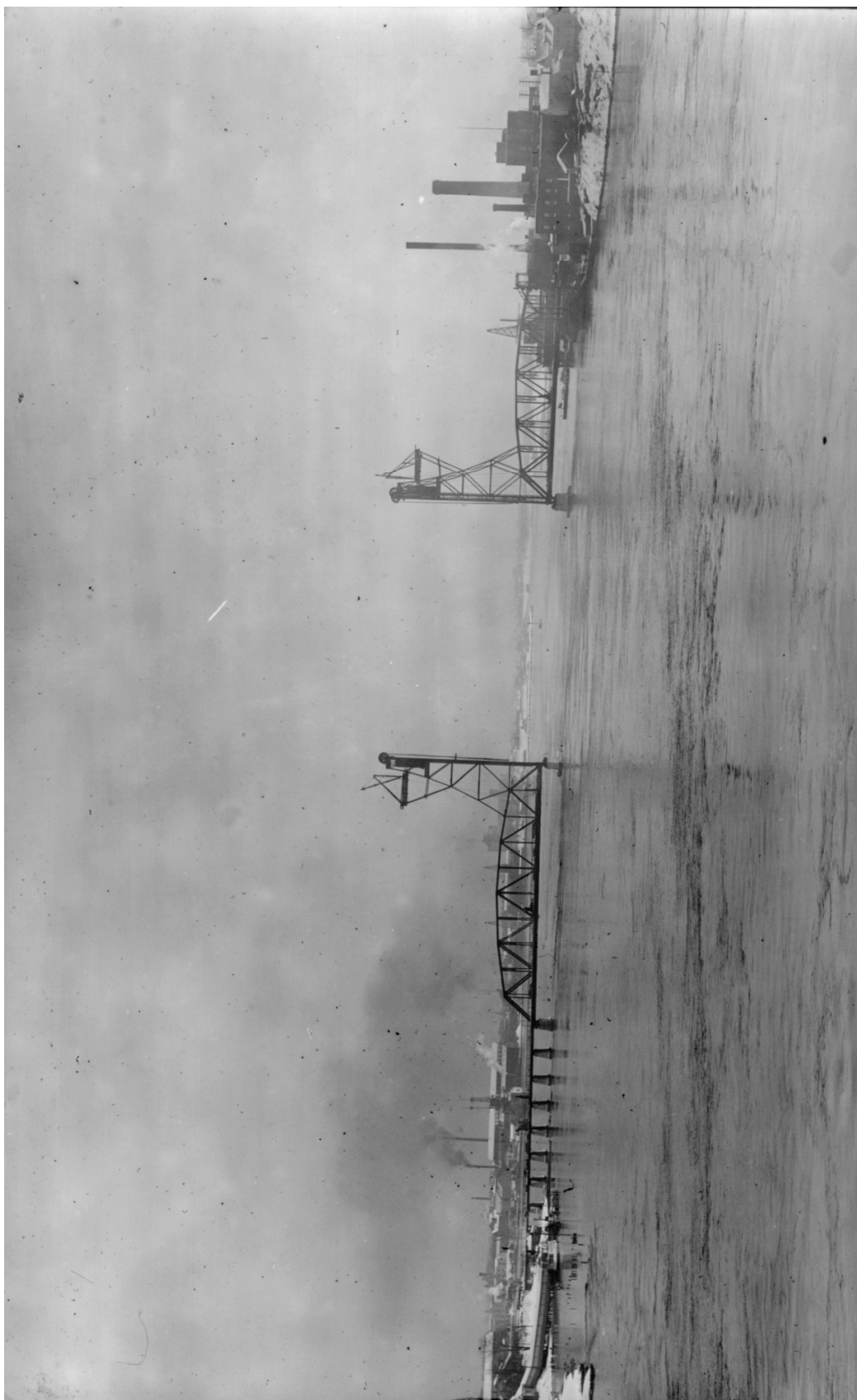


Plate N-52: View of Approach Spans and Towers Dec. 20, 1922 (Portsmouth Athenaeum-Norris Collection 1458)

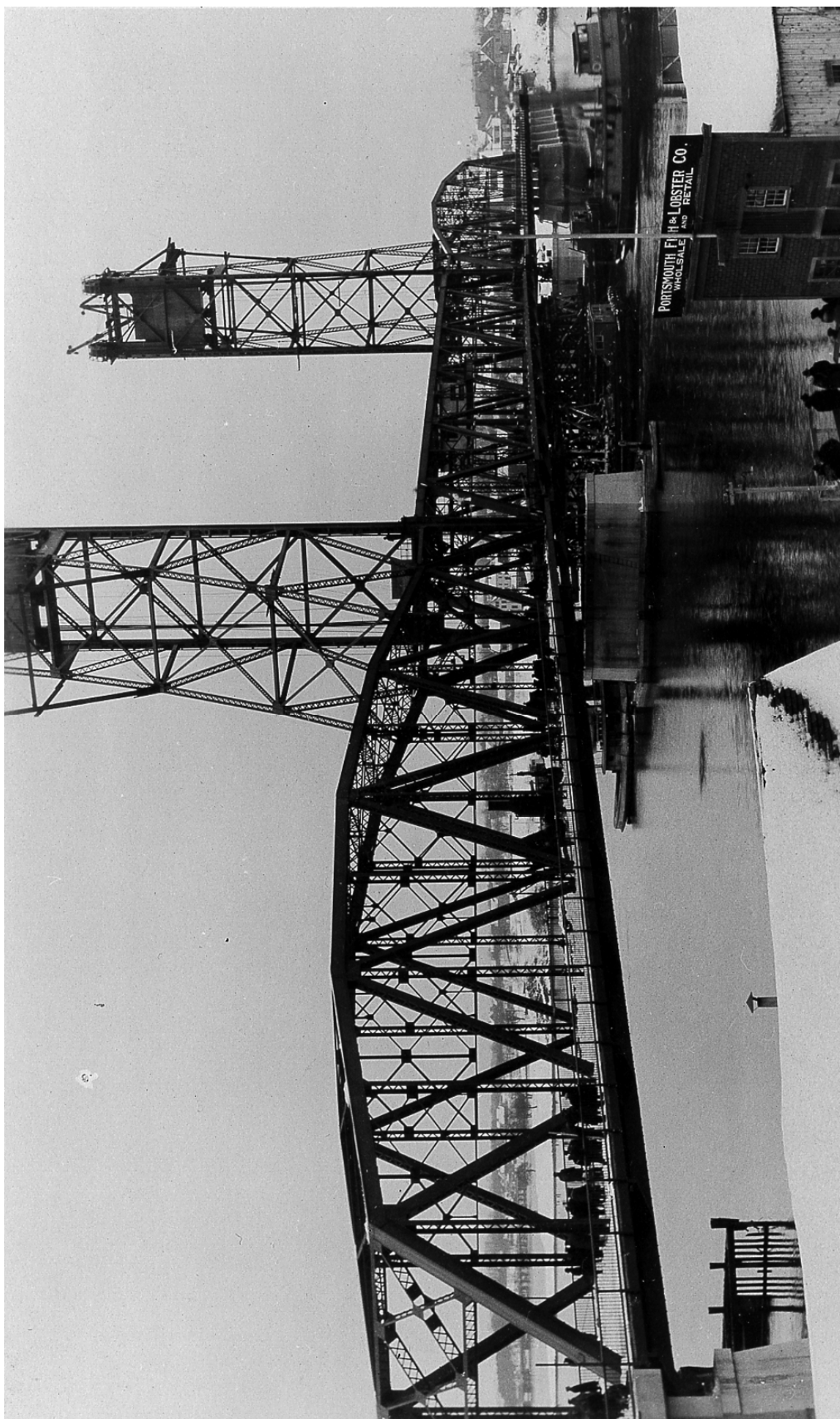


Plate N-53: View With Lift Span In Place, Jan 4 1923 (Maine DOT ME 017)



Plate N-54: Draw Span looking North Showing Floor Planking Feb 5 1923 No. 156 (Portsmouth Athenaeum-Norris Collection 1476)



Plate N-55: Draw Span Partially Raised Feb 5 1923. No. 158 (Portsmouth Athenaeum-Norris Collection 1480)

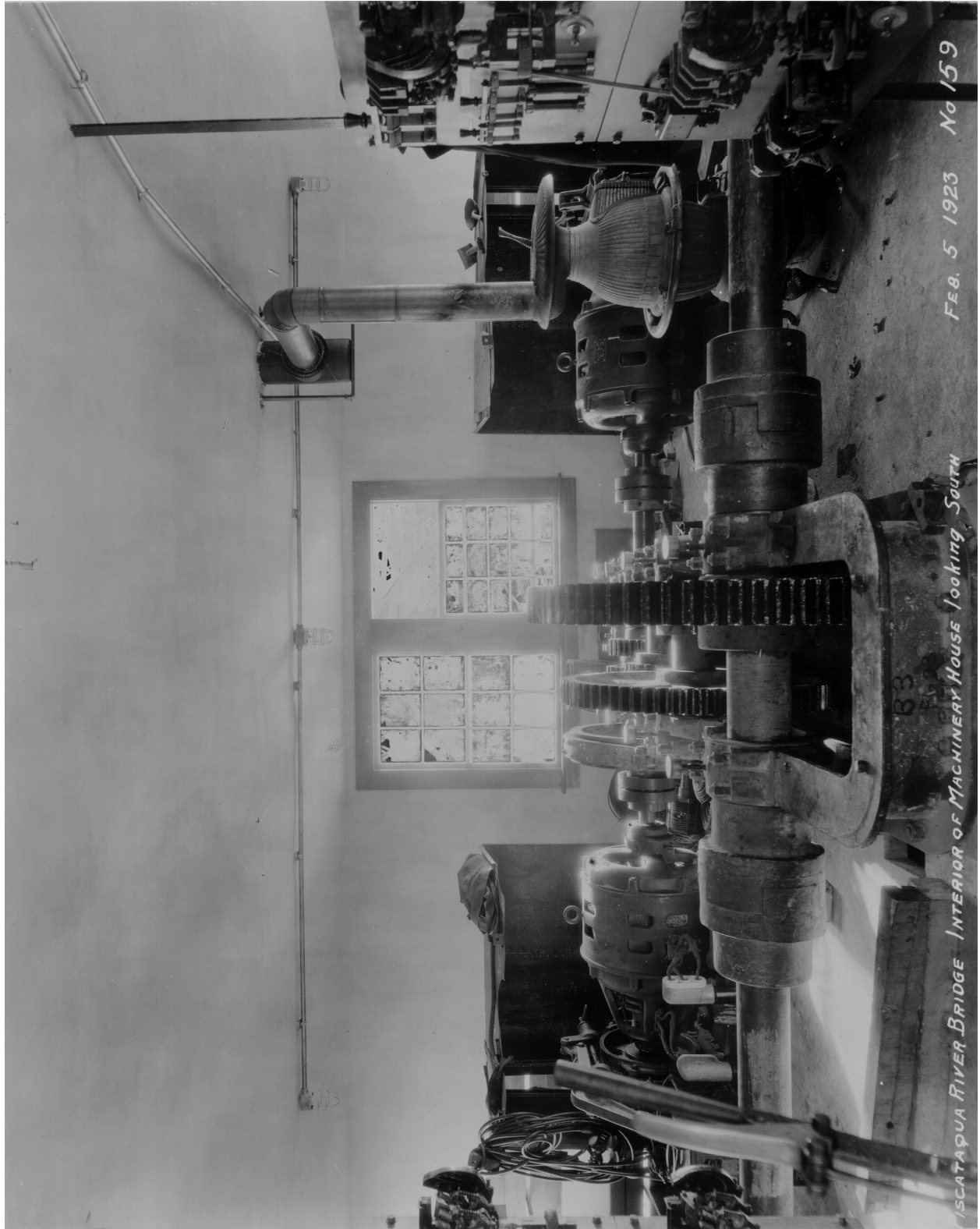


Plate N-56: Interior of Machinery House View Looking South, Feb. 5 1923 No. 159 (Portsmouth Athenaeum-Norris Collection 1481)



Plate N-57: Interior of Machinery House View Looking North, Feb 5 1923 No. 160 (Portsmouth Athenaeum-Norris Collection 1482)



Plate N-58: Portsmouth Approach, April 8 1923. Neg. No. 162 (Portsmouth Athenaeum-Norris Collection 1484)

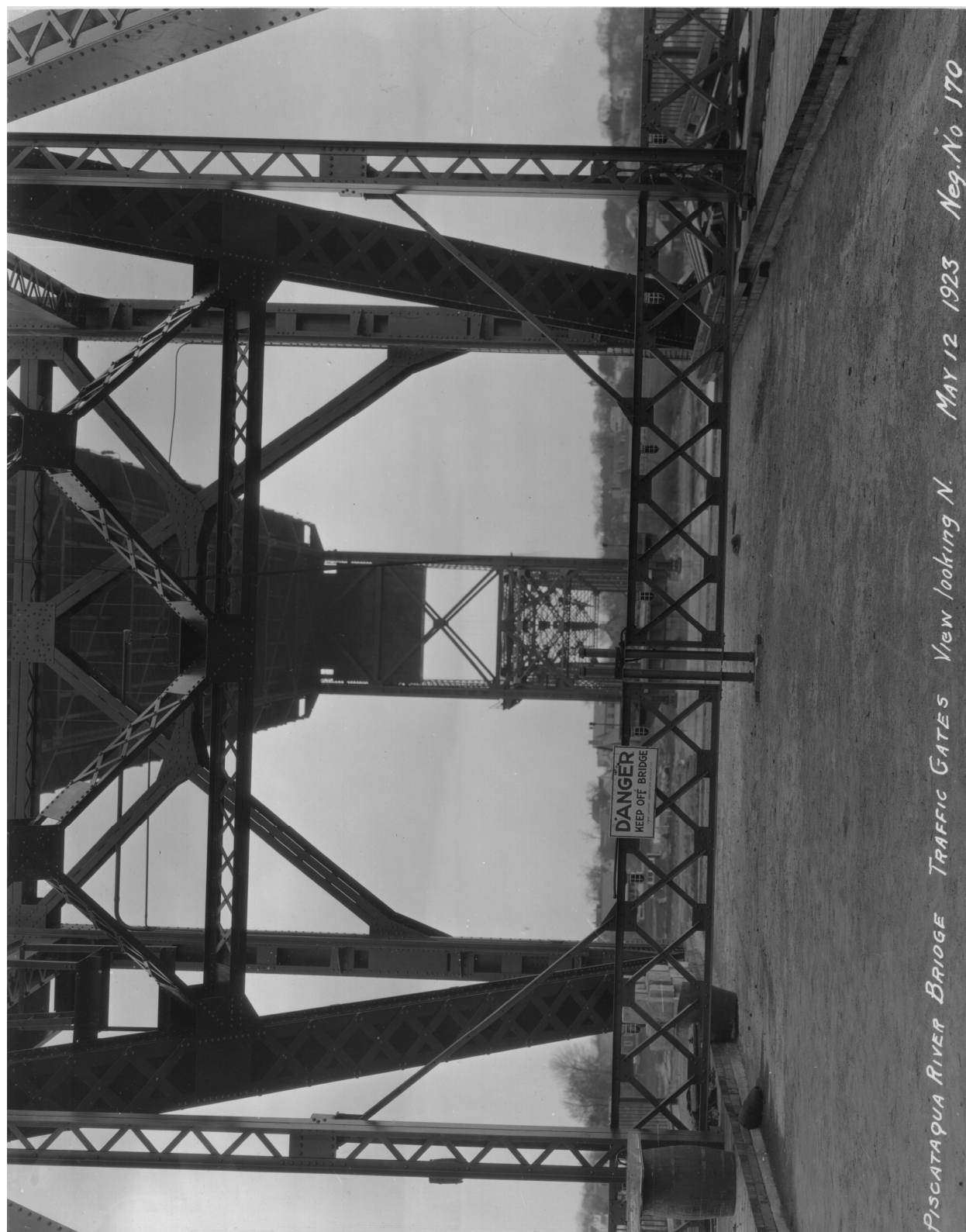


Plate N-59: Traffic Gates View looking North, May 12 1923. Neg. No 170 (Portsmouth Athenaeum-Norris Collection 1493)



*Plate N-60: Top Surfacing of Bridge Warren Bros Contractors, May 24, 1923. Neg. No 173
(Portsmouth Athenaeum-Norris Collection 1495)*

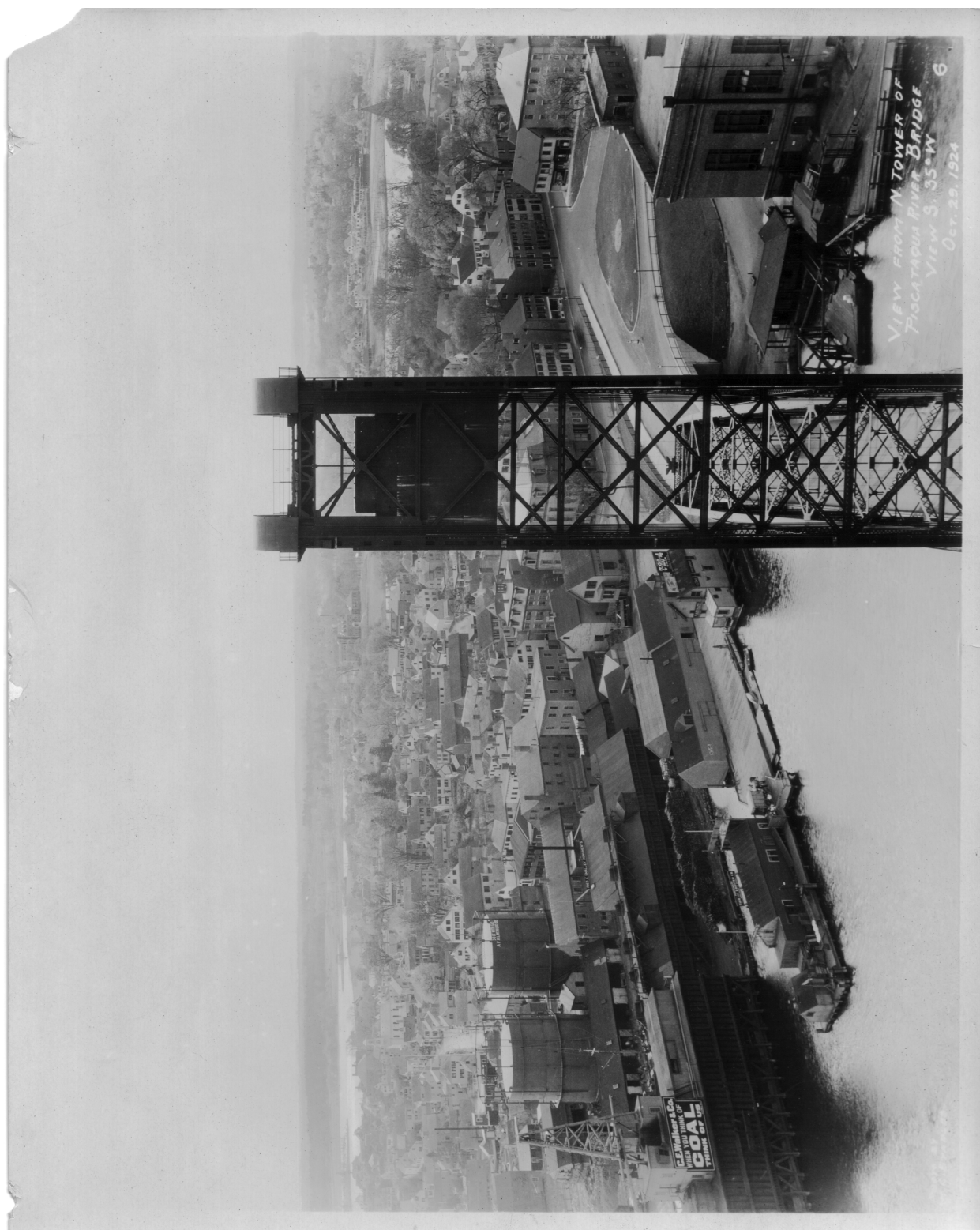


Plate N-61: View from N. Tower of Portsmouth and Approach, Oct 29 1924 (Portsmouth Athenaeum-Norris Collection 1501)



Plate N-62: View of Approach and Bridge (ND) (Portsmouth Athenaeum-Norris Collection P7-62B)

