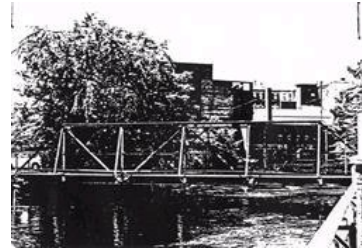


# Massachusetts Cultural Resource Information System

## Scanned Record Cover Page

<b>Inventory No:</b>	LOW.973
<b>Historic Name:</b>	Prescott Yard Railroad Bridge over Eastern Canal
<b>Common Name:</b>	
<b>Address:</b>	
<b>City/Town:</b>	Lowell
<b>Village/Neighborhood:</b>	Downtown
<b>Local No:</b>	
<b>Year Constructed:</b>	
<b>Architect(s):</b>	
<b>Architectural Style(s):</b>	
<b>Use(s):</b>	Other Rail Related; Other Transportation
<b>Significance:</b>	Archaeology, Historic; Engineering; Industry; Transportation
<b>Area(s):</b>	LOW.BC: Lowell National Historical Park LOW.BE: Downtown Lowell Historic District LOW.C: Locks and Canals District
<b>Designation(s):</b>	Local Historic District (12/13/1983); Nat'l Historic Landmark (12/22/1977); Nat'l Register District (6/5/1978); Nat'l Register District (8/13/1976)



The Massachusetts Historical Commission (MHC) has converted this paper record to digital format as part of ongoing projects to scan records of the Inventory of Historic Assets of the Commonwealth and National Register of Historic Places nominations for Massachusetts. Efforts are ongoing and not all inventory or National Register records related to this resource may be available in digital format at this time.

The MACRIS database and scanned files are highly dynamic; new information is added daily and both database records and related scanned files may be updated as new information is incorporated into MHC files. Users should note that there may be a considerable lag time between the receipt of new or updated records by MHC and the appearance of related information in MACRIS. Users should also note that not all source materials for the MACRIS database are made available as scanned images. Users may consult the records, files and maps available in MHC's public research area at its offices at the State Archives Building, 220 Morrissey Boulevard, Boston, open M-F, 9-5.

Users of this digital material acknowledge that they have read and understood the MACRIS Information and Disclaimer (<http://mhc-macris.net/macrisdisclaimer.htm>)

Data available via the MACRIS web interface, and associated scanned files are for information purposes only. THE ACT OF CHECKING THIS DATABASE AND ASSOCIATED SCANNED FILES DOES NOT SUBSTITUTE FOR COMPLIANCE WITH APPLICABLE LOCAL, STATE OR FEDERAL LAWS AND REGULATIONS. IF YOU ARE REPRESENTING A DEVELOPER AND/OR A PROPOSED PROJECT THAT WILL REQUIRE A PERMIT, LICENSE OR FUNDING FROM ANY STATE OR FEDERAL AGENCY YOU MUST SUBMIT A PROJECT NOTIFICATION FORM TO MHC FOR MHC'S REVIEW AND COMMENT. You can obtain a copy of a PNF through the MHC web site ([www.sec.state.ma.us/mhc](http://www.sec.state.ma.us/mhc)) under the subject heading "MHC Forms."

Commonwealth of Massachusetts  
Massachusetts Historical Commission  
220 Morrissey Boulevard, Boston, Massachusetts 02125  
[www.sec.state.ma.us/mhc](http://www.sec.state.ma.us/mhc)

This file was accessed on:

Friday, March 07, 2014 at 3:39: AM

# LOWELL CULTURAL RESOURCES INVENTORY

LOW. 973

(BC) NADIS - 6/5/78  
(BE) LHD - 12/13/83

IDENTIFICATION OFF PRESCOTT STREET, OVER THE EASTERN CANAL MAP SHEET # 12

1) CURRENT OWNER City of Lowell OWNER OCCUPIED n/a

2) HISTORIC NAME Prescott Yard Railroad Bridge

3) CURRENT NAME same

4) PROPERTY TYPE bridge 5) ZONING CLASSIFICATION n/a

6) TAXES: PAYMENTS exempt STATUS clear

7) WITHIN BOUNDARIES OF LHPD, Locks and Canals HD, LNHP

## HISTORICAL ABSTRACT

1) CONSTRUCTION DATE ca. 1890-1911

SOURCE estimated: See Additional Description

2) ARCHITECT OR BUILDER unknown

3) HISTORIC OWNER Massachusetts Cotton Mills

4) ORIGINAL USE: GF railroad bridge UF n/a

5) PREVIOUS <sup>Bridge</sup> ~~uses~~ ON PROPERTY yes DATE ca. 1850-1890

SOURCE documented: maps

## DESCRIPTIVE DATA

1) ARCHITECTURAL STYLE utilitarian

2) PRESENT USE:

GF bridge

UF n/a

3) NO OF STORIES n/a

4) PROP SQ FT n/a

5) PLAN rectangular

6) ROOF none

7) STRUCTURAL SYSTEM metal Warren truss with verticals

8) OUTBUILDINGS none

9) MATERIALS:

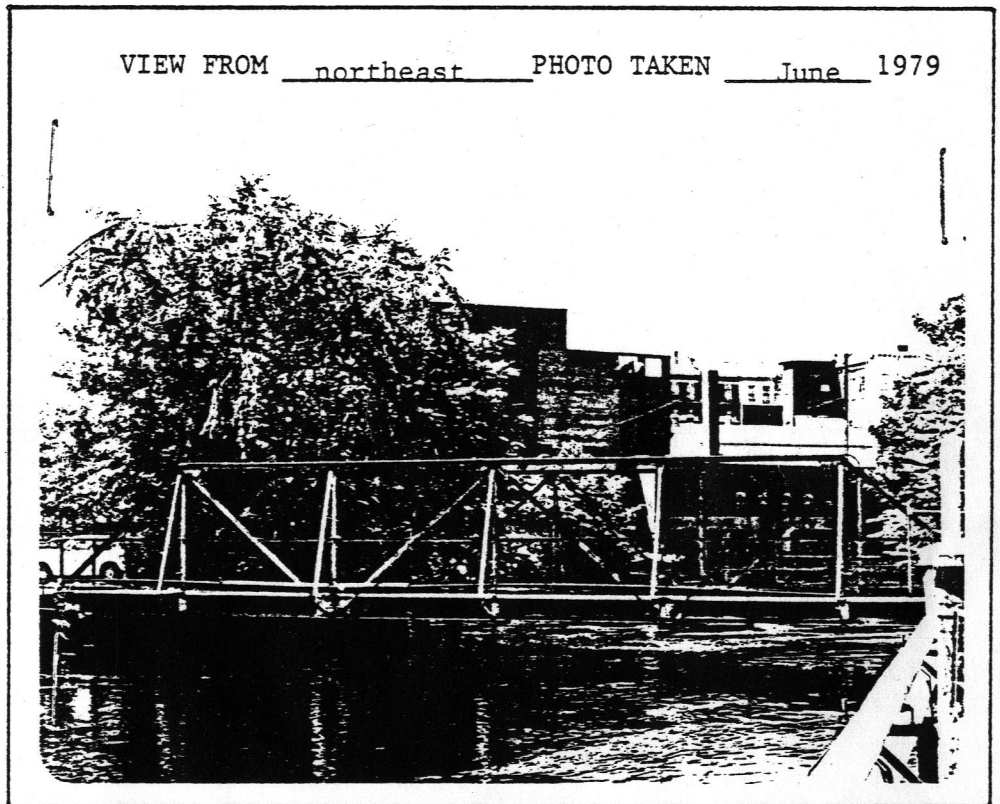
FOUNDATION concrete abutments

FACADE steel girders

TRIM n/a

10) NOTABLE SURFACE LANDSCAPE ELEMENTS none

VIEW FROM northeast PHOTO TAKEN June 1979



ADDRESS OFF PRESCOTT STREET, OVER THE EASTERN CANALVISUAL ASSESSMENT

- 1) CONDITION OF BUILDING FABRIC needs minor repair
- 2) IF DETERIORATED, CAUSES n/a
- 3) INTEGRITY OF HISTORIC BLDG FABRIC: GF intact with minor changes  
UF n/a
- 4) SURROUNDING LAND USES commercial, industrial, canal frontage
- 5) INTEGRITY OF PROP'S HIST SETTING severely disrupted historic setting
- 6) IMPORTANCE OF PROP TO HIST SETTING character so disrupted, question n/a

ADDITIONAL DESCRIPTIVE AND HISTORICAL INFORMATION

Spanning the Eastern Canal, south of East Merrimack Street, the Prescott Yard Railroad Bridge was built to connect the Prescott Storehouses with the main millyard. Since the initial development of the millyard, this site has been occupied by a railroad bridge, the first one of which may have been a wooden bridge of Towne-lattice-truss construction (See Fig. 3 of Prescott Manufacturing Company--General History). The present bridge, perhaps only the second on this site, probably dates from 1890 when the old Prescott Storehouse was demolished and replaced by a large storehouse. By 1911, the present bridge is shown on the millyard's Insurance Survey (See Figs. 1 & 9 of Prescott Manufacturing Company--General History). Changes made to the bridge include the replacement of its original granite abutments with concrete (ca. 1923) and the removal of the railroad tracks which once crossed it (ca. 1930).

ARCHEOLOGICAL COMMENT

Not applicable.