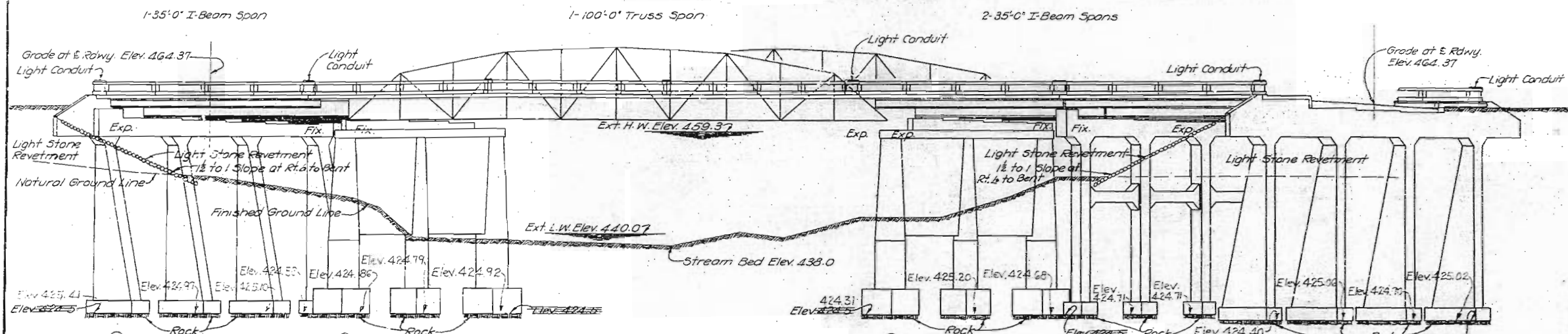


# MISSOURI STATE HIGHWAY DEPARTMENT

FED. ROAD DIST. NO.	STATE	FED. AID PROJ. NO.	FISCAL YEAR	SHEET NO.	TOTAL SHEETS
1	MO.	PWA 76 R 79 TR-SIG	1935	19	25



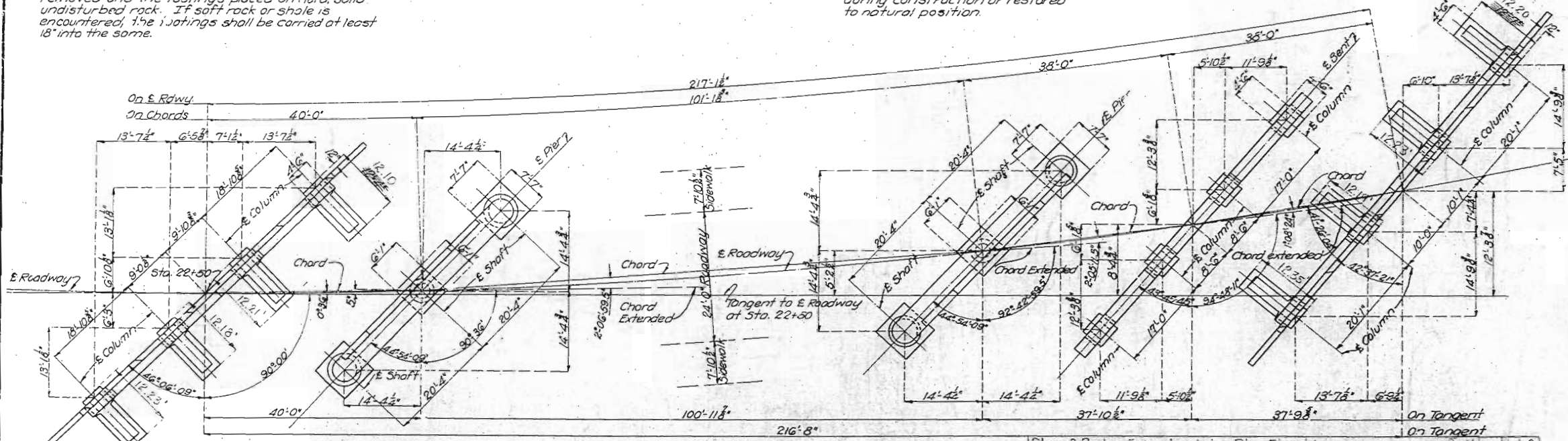
Note: All loose, shelly, or disintegrated rock shall be removed and the footings placed on hard, solid undisturbed rock. If soft rock or shale is encountered, the footings shall be carried at least 18" into the same.

### GENERAL ELEVATION

Note: Banks to be maintained during construction or restored to natural position.

### GENERAL NOTES:

- Concrete in handrail to be Class "A". Concrete in slabs and curbs to be Class "X". All other concrete to be Class "B".
  - Exposed edges to be beveled  $\frac{3}{4}$ " where no other bevel is noted.
  - Where rubber compound is specified on slabs for use in partition and expansion joints, the pre-molded joint shall be securely stitched to one face of concrete with copper wire.
  - Two name plates type "B" as shown on Std. 5918R to be furnished and placed by contractor. Cost of name plates to be included in price bid for other items.
  - Bridge excavation in accordance with Section 1 of Standard Specifications issued April 1, 1930, except that quarter feet paid for will be computed from extreme low water Elev. 440.0 where existing ground line is below this elevation.
  - Shop drawings for all structural steel shall be submitted to the Missouri State Highway Department in duplicate and shall be approved before steel is fabricated.
  - Rivets  $\frac{3}{4}$ " holes  $\frac{1}{8}$ ". Field connections riveted.
  - Paint: Shop, name, field, surfaces inaccessible after erection three coats of red lead. No other paint to be applied by the contractor. Red lead required shall be finished by the contractor. See Special Provisions.
  - Bar supports and spacers will be required for reinforcing steel in superstructure. See Standard C-110R and Special Provisions.
  - Design Spec. A.A.S.T.O.
  - Loading H-15 A.A.S.T.O. One Long
  - Structural Steel Stress 16000  $\frac{lb}{sq. in.}$
  - Reinforcing Steel Stress 16000  $\frac{lb}{sq. in.}$
  - Concrete Class "A" 900  $\frac{lb}{cu. yd.}$
  - Concrete Class "B" 650  $\frac{lb}{cu. yd.}$
  - Concrete Class "X" 750  $\frac{lb}{cu. yd.}$
- All concrete shall be proportioned by the weight proportioning method. See Special Provisions.



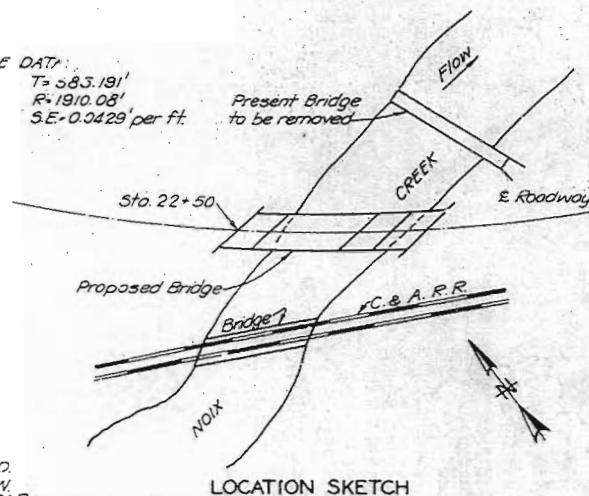
### PLAN

Class 2 Bridge Excavation below Plan Elevation	Cu. Yds.	1.0
Special Concrete Protection in Group A	Cu. Yds.	159.2
Special Concrete Protection in Group C	Cu. Yds.	68.7

ESTIMATED QUANTITIES			
Item	Substr.	Superstr.	Total
Bridge Excavation Class 1	Cu. Yds.	560	560
Bridge Excavation Class 2	Cu. Yds.	1114	1114
Concrete Class "A"	Cu. Yds.	21.2	21.2
Concrete Class "B"	Cu. Yds.	564.4	564.4
Concrete Class "X"	Cu. Yds.	208.4	208.4
Fabricated Struct. Steel (Truss Span)	Lbs.	113,000	113,000
Fabricated Struct. Steel (I-Beam Spans)	Lbs.	70,000	70,000
Cast Steel (Truss Span)	Lbs.	1210	1210
Cast Steel Bearings (I-Beam Spans)	Lbs.	1750	1750
Reinforcing Steel	Lbs.	33,990	33,990
2 1/2" Fibre Conduit	Lin. Ft.	107	107
1 1/2" Fibre Conduit	Lin. Ft.	18	18

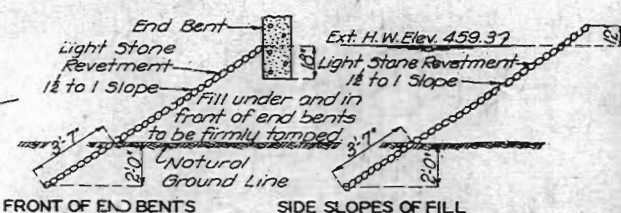
Note: Bridge excavation above Elev. 441.0 will be paid for as Class 1 Bridge Excavation.  
 Bridge excavation below Elev. 441.0 will be paid for as Class 2 Bridge Excavation.

CURVE DATA:  
 P.I. Sta. 22+11.6  
 $\Delta = 34^{\circ}04' Lt$   
 $D = 3^{\circ}00'$   
 $T = 583.191'$   
 $R = 1910.08'$   
 $S.E. = 0.3429$  per ft.



### LOCATION SKETCH

Note: Curve formulas based on 100' chords cannot be used in locating bents and piers.



FRONT OF END BENTS      SIDE SLOPES OF FILL

Note: Light stone revetment to be placed on fills at ends of bridge as shown in sketches.  
 Approximately 600 cu. yds. of light stone revetment work included in road contract.

### REVETMENT SKETCHES

Note: This drawing is not to scale. Follow dimensions.

### BRIDGE OVER NOIX CREEK

STATE ROAD FROM LOUISIANA TO LINCOLN COUNTY LINE  
 ABOUT 0.5 MILE SOUTH OF LOUISIANA  
 PROJECT NO. PWA 76 R 79 TR-SIG STA. 22+50

PIKE COUNTY

SUBMITTED BY: *N.R. Pacy* DATE: 1/14/35  
 APPROVED BY: *T.H. Kuttner* DATE: 1/14/35  
CHIEF ENGINEER

STD. 5918R
STD. C10R
K-487

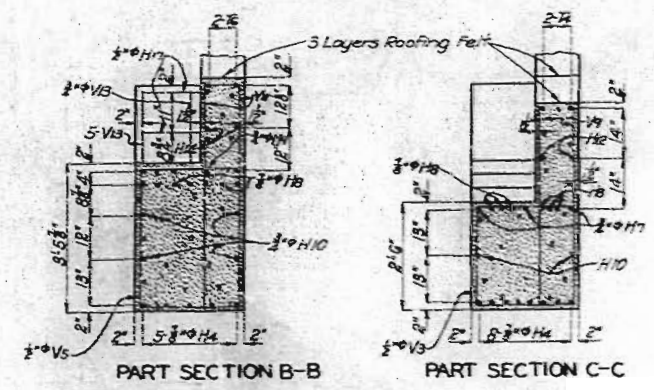
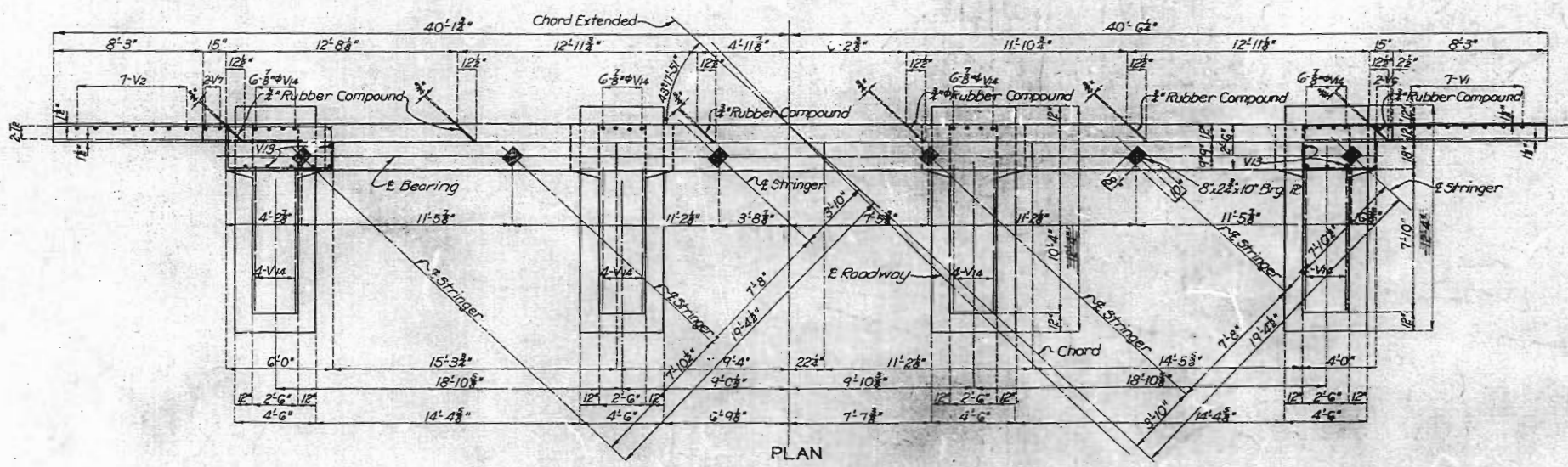
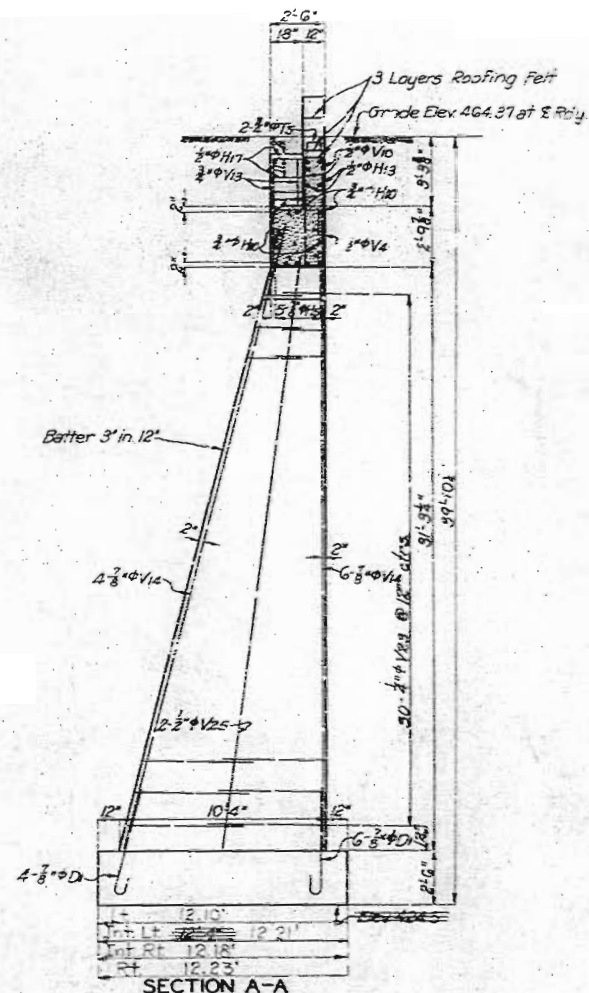
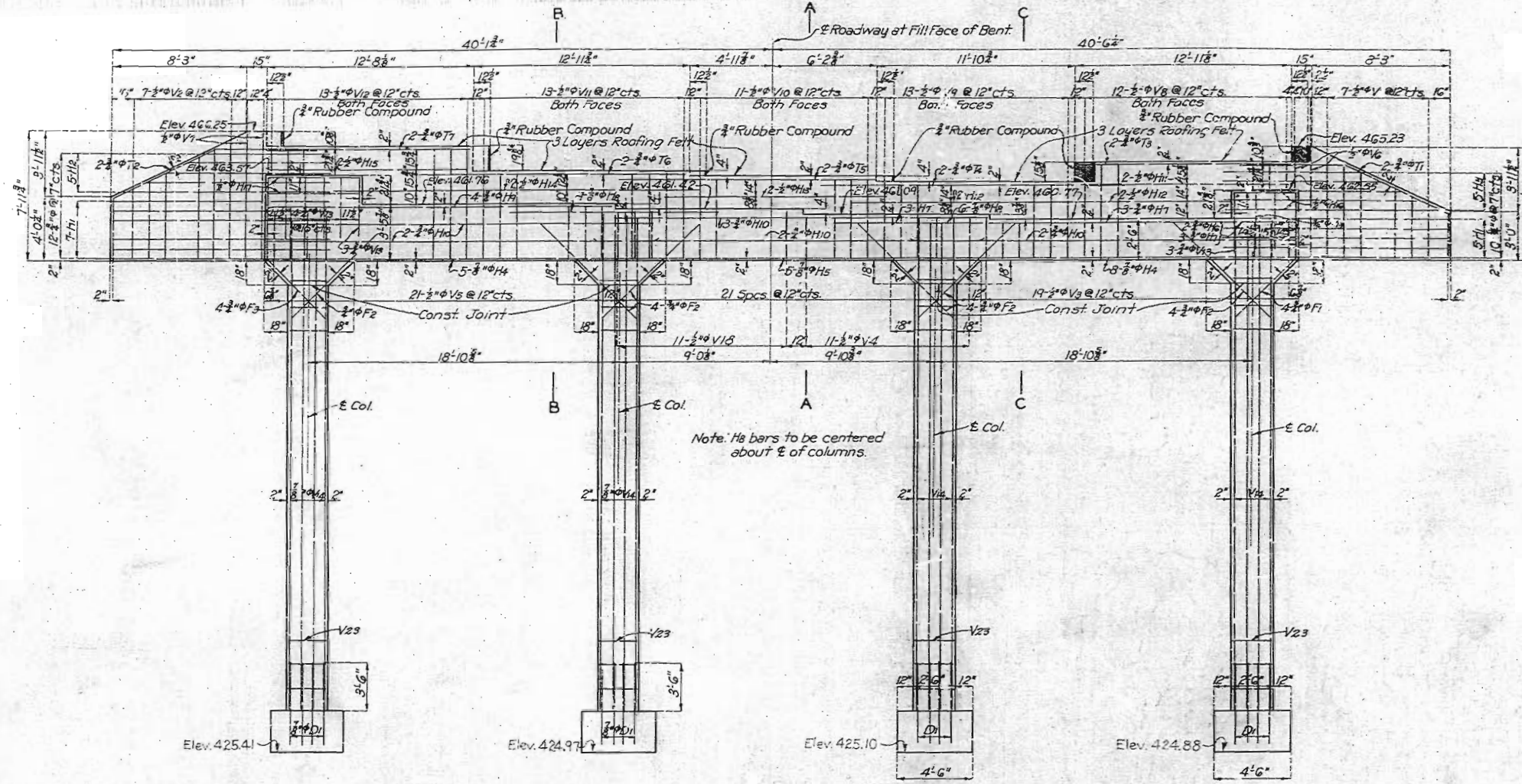
60



# MISSOURI STATE HIGHWAY DEPARTMENT

FED. ROAD DIST. NO.	STATE	FED. AID PROJ. NO.	FISCAL YEAR	SHEET NO.	TOTAL SHEETS
5	MO.	PWA76, R79TR-SIC 19	19	1	14

FINAL PLANS



**BRIDGE OVER NOIX CREEK**  
 STATE ROAD FROM LOUISIANA TO LINCOLN COUNTY LINE  
 ABOUT 0.5 MILE SOUTH OF LOUISIANA  
 PROJECT NO. PWA76, R79TR-SIC STA. 22+50  
**PIKE COUNTY**

DETAILS OF END BENT NO. 1

Note: This drawing is not to scale. Follow dimensions.

Sheet No. 3 of 14.

62

Drawn Nov 1934 By P.H.S.  
 Traced Nov 1934 By H.W.H.  
 Checked Jan 1935 By R.A.S.

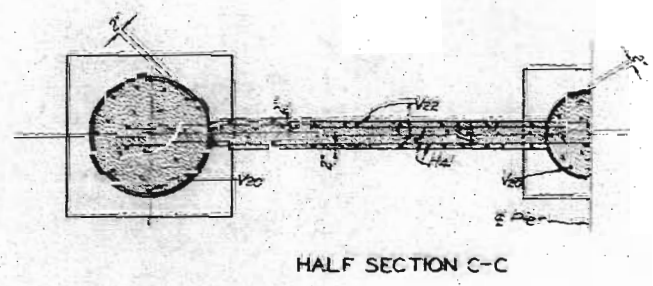
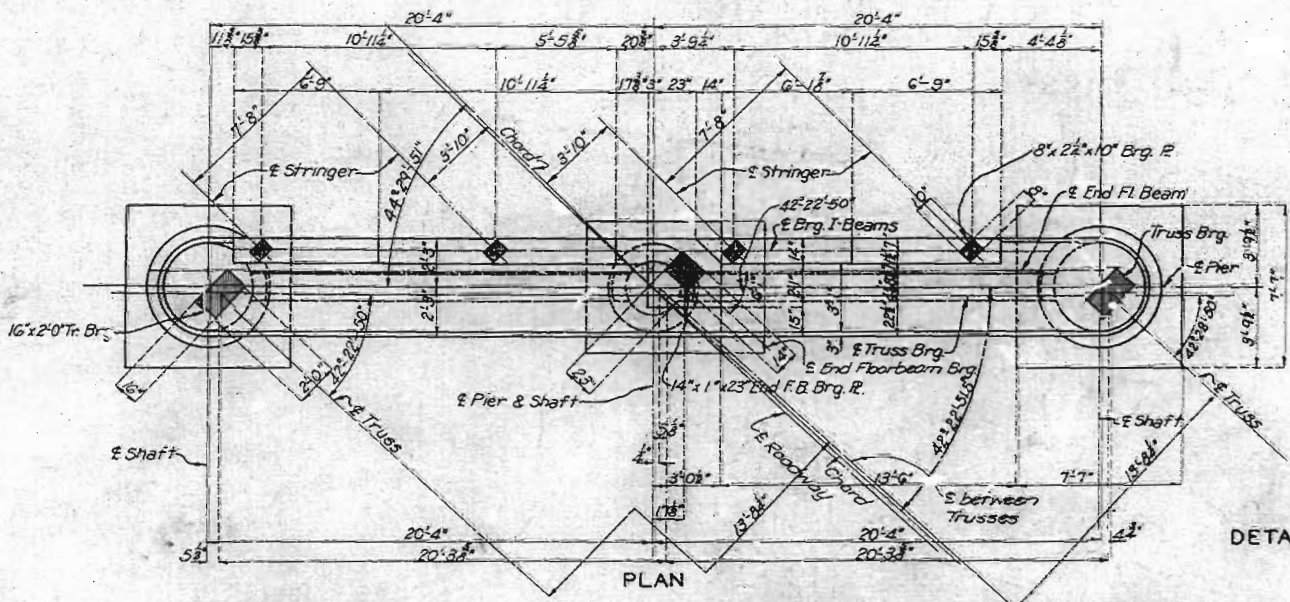
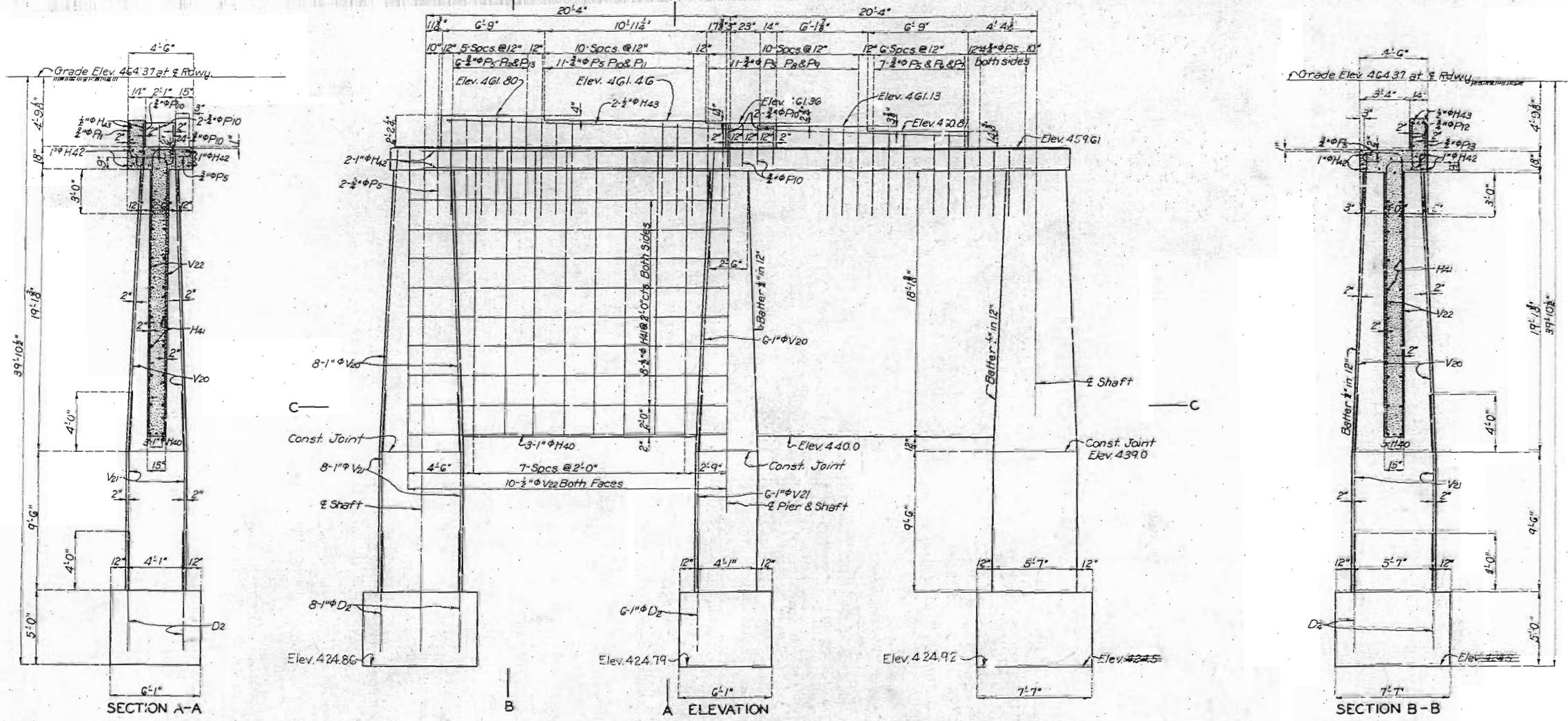
K-487



# MISSOURI STATE HIGHWAY DEPARTMENT

FED. ROAD DIST. NO.	STATE	FED. AID PROJ. NO.	FISCAL YEAR	SHEET NO.	TOTAL SHEETS
5	MO.	PWA76-R79TR-51C	19		

FINAL PLANS



**BRIDGE OVER NOIX CREEK**  
 STATE ROAD FROM LOUISIANA TO LINCOLN COUNTY LINE  
 ABC IT 0.5 MILE SOUTH OF LOUISIANA  
 PROJECT NO. PWA76-R79TR-51C STA. 22+50  
**PIKE COUNTY**

DETAILS OF PIER NO. 2

Drawn Nov. 1934 By P.H.S.  
 Traced Nov. 1934 By H.W.H.  
 Checked Jan. 1935 By R.P.S.

Note: This drawing is not to scale. Follow dimensions.

Sheet No. 2 of 14

K-487

63

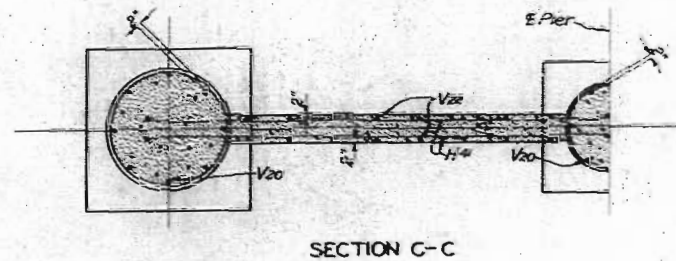
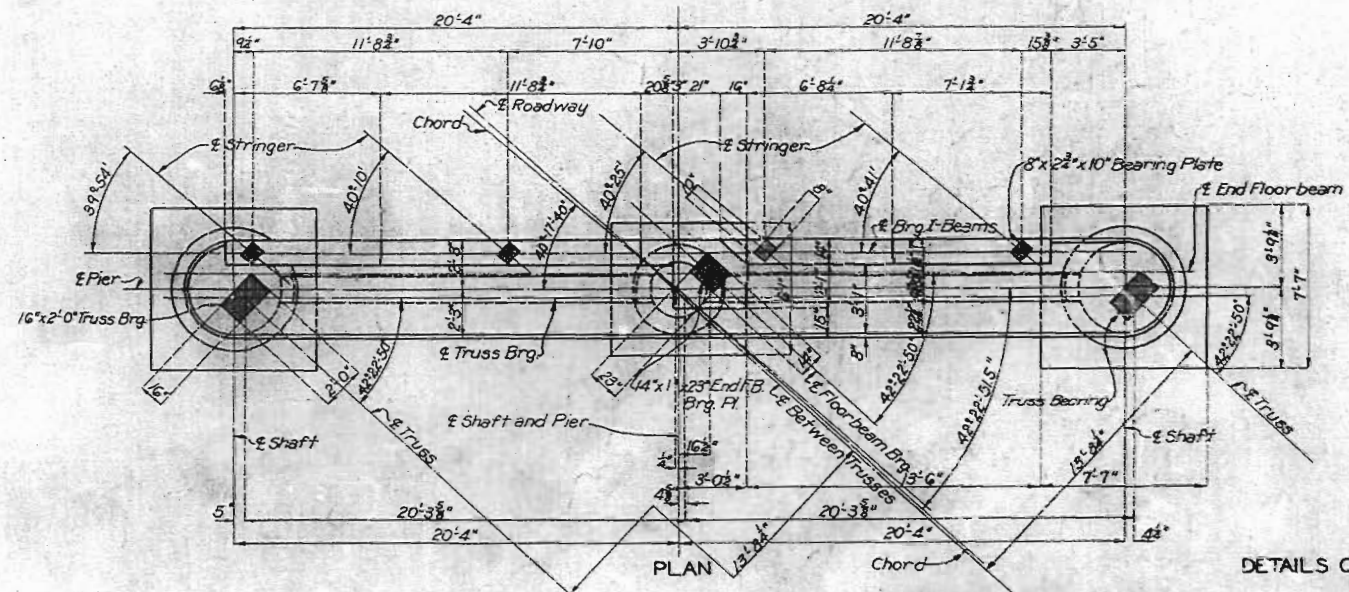
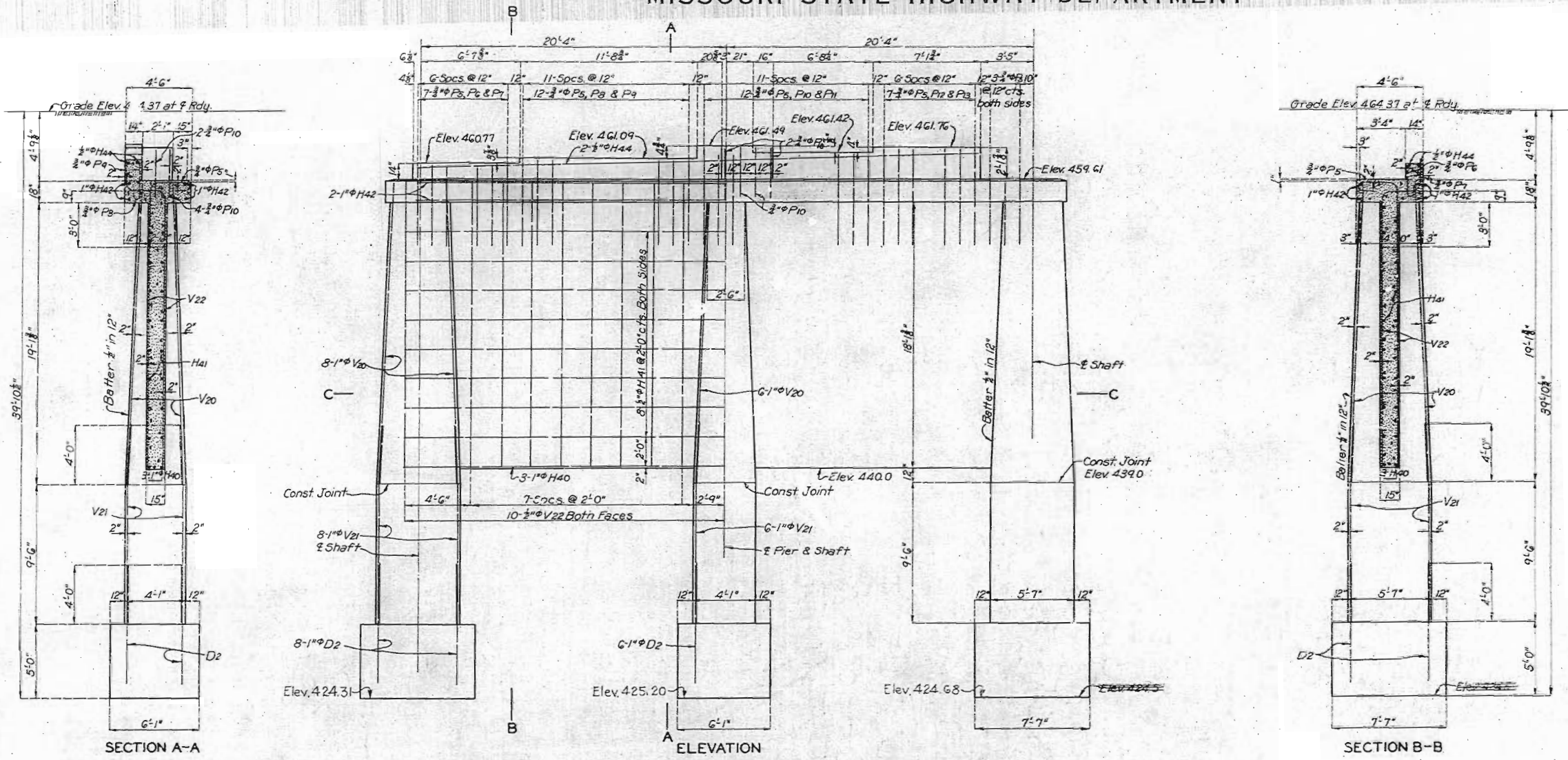


# MISSOURI STATE HIGHWAY DEPARTMENT

FED. ROAD DIST. NO.	STATE	FED. AID PROJ. NO.	FISCAL YEAR	SHEET NO.	TOTAL SHEETS
5	MO.	HWY. 70	1934	19	

Docket # 12381

FINAL PLANS



**BRIDGE OVER NOIX CREEK**  
 STATE ROAD FROM LOUISIANA TO LINCOLN COUNTY LINE  
 ABOUT 0.5 MILE SOUTH OF LOUISIANA  
 PROJECT NO. PWA76, R79TR-SIC STA. 22 + 50  
 PIKE COUNTY

FINISHED

64

Drawn Nov. 1934 By P.H.S.  
 Traced Dec. 1934 By H.W.H.  
 Checked Jan. 1935 By R.A.B.

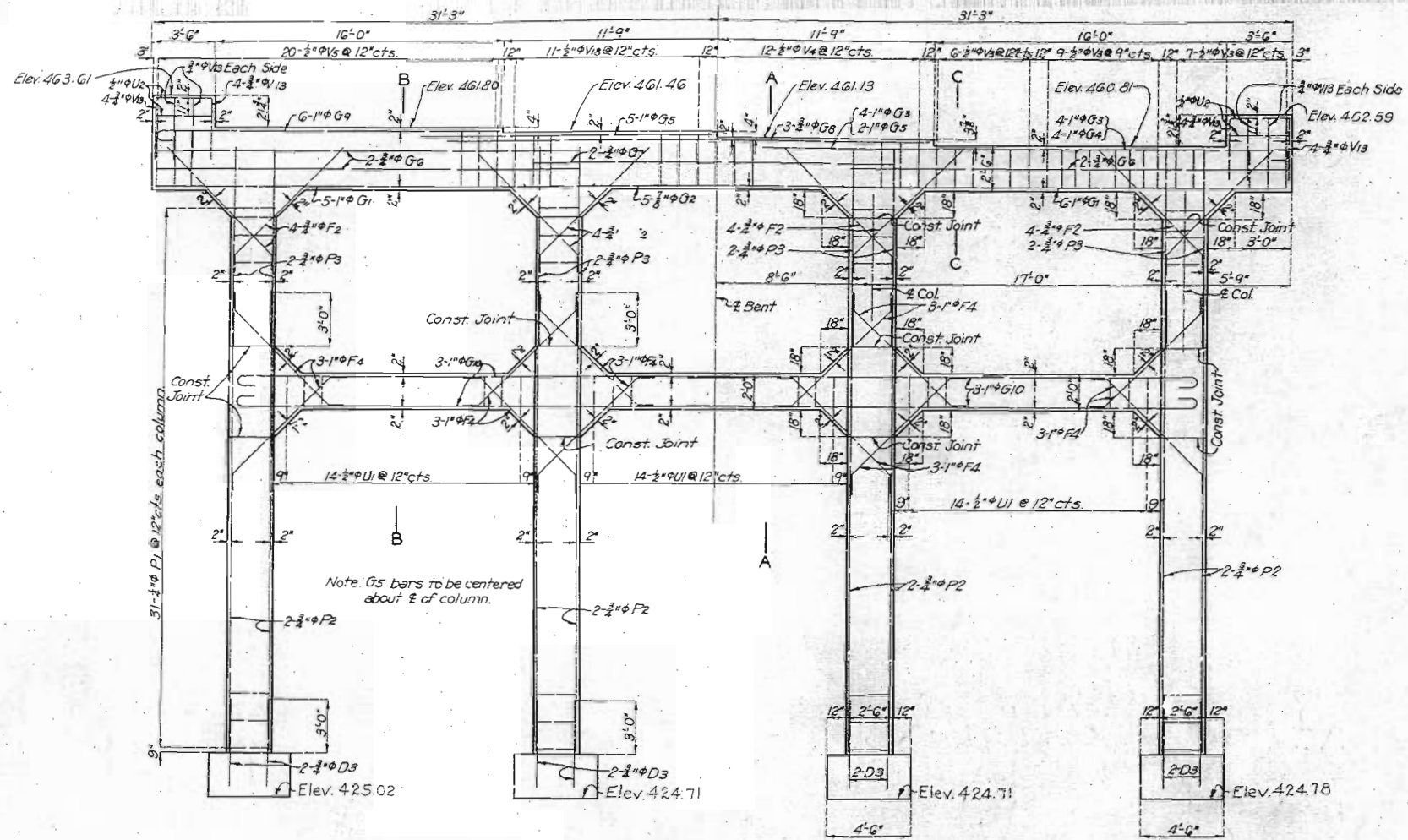
Note: This drawing is not to scale. Follow dimensions.



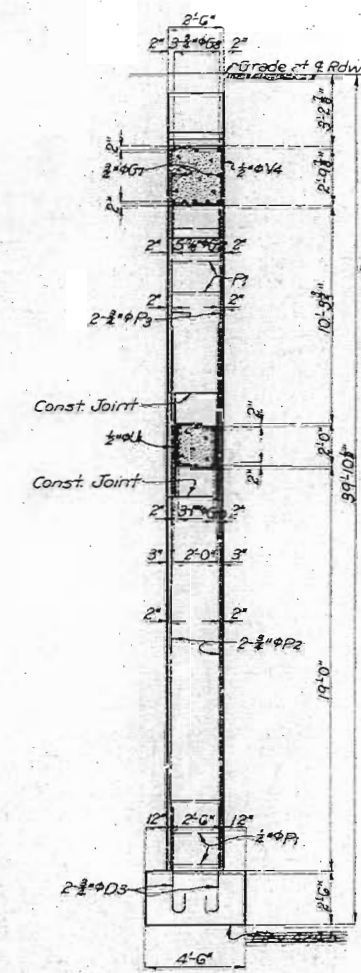
MISSOURI STATE HIGHWAY DEPARTMENT

FED. ROAD DIST. NO.	STATE	FED. AID PROJ. NO.	FISCAL YEAR	SHEET NO.	TOTAL SHEETS
5	MO	PWA76, R79TR-SIC	19		

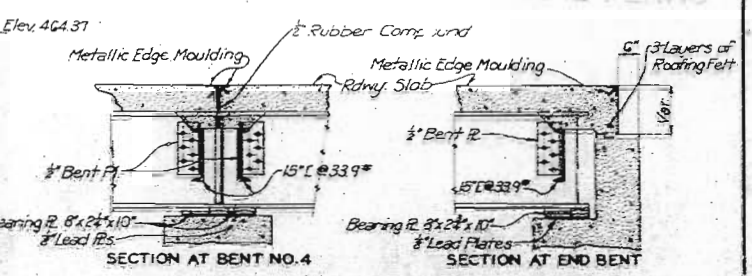
FINAL PLANS



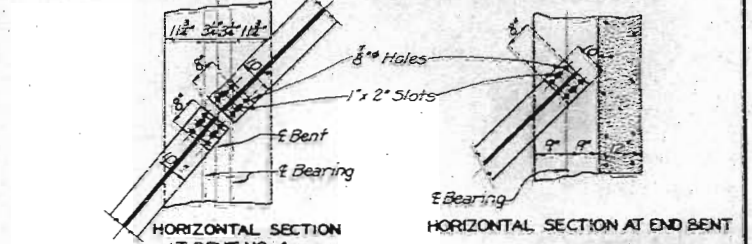
ELEVATION



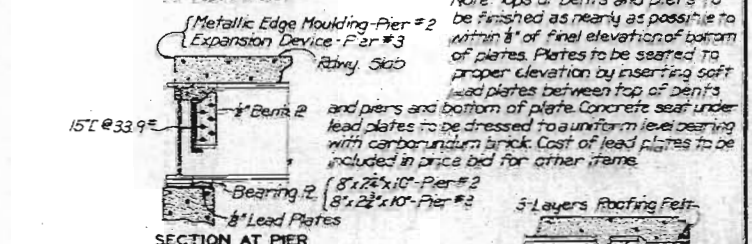
SECTION A-A



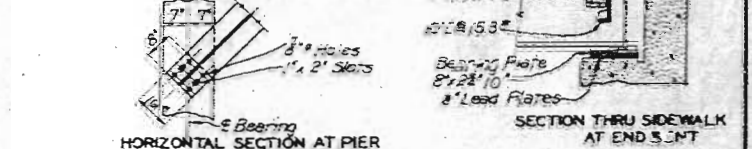
SECTION AT BENT NO. 4 SECTION AT END BENT



HORIZONTAL SECTION AT BENT NO. 4 HORIZONTAL SECTION AT END BENT

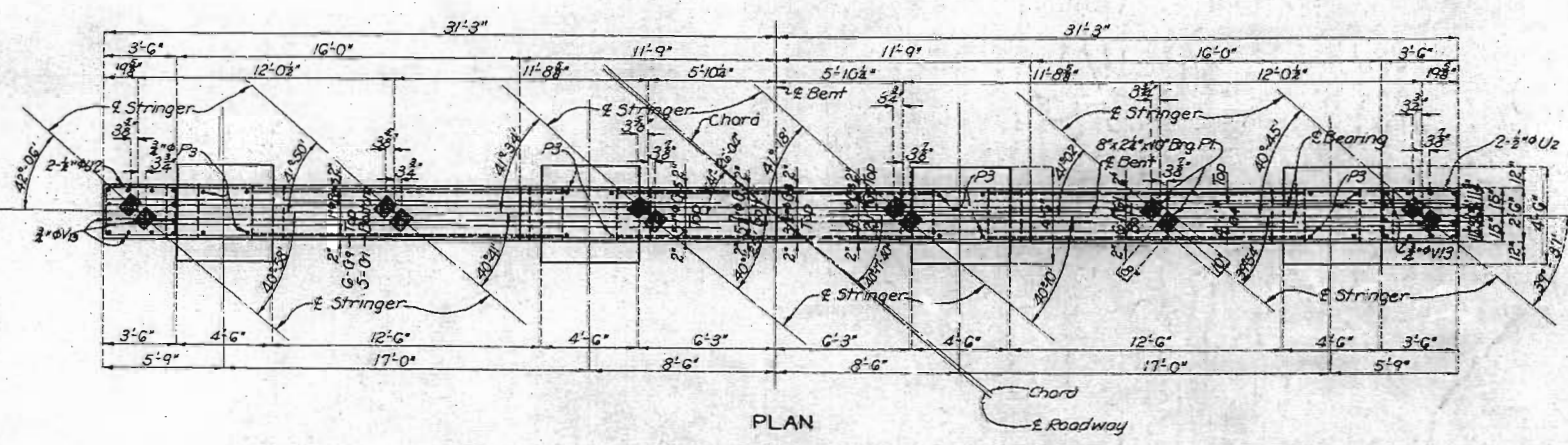


SECTION AT PIER

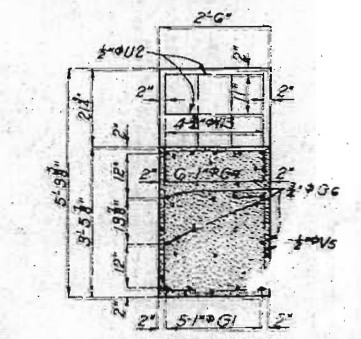


HORIZONTAL SECTION AT PIER SECTION THRU SIDEWALK AT END BENT

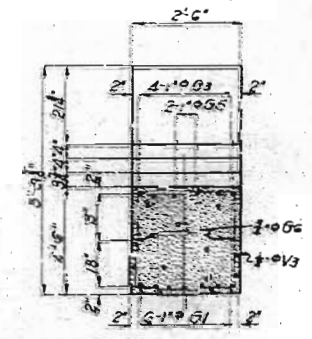
DETAILS OF I-BEAM BEARINGS



PLAN



PART SECTION B-B



PART SECTION C-C

DETAILS OF INT. BENT NO. 4

BRIDGE OVER NOIX CREEK

STATE ROAD FROM LOUISIANA TO LINCOLN COUNTY, LINE ABOUT 0.5 MILE SOUTH OF LOUISIANA PROJECT NO. PWA76, R79TR-SIC STA. 22+50 PIKE COUNTY

Drawn Nov. 1934 By P.H.S.  
Traced Nov. 1934 By H.W.H.  
Checked Jan. 1935 By P.A.B.

Note: This drawing is not to scale. Follow dimensions.

Sheet No. 6 of 12

K-487

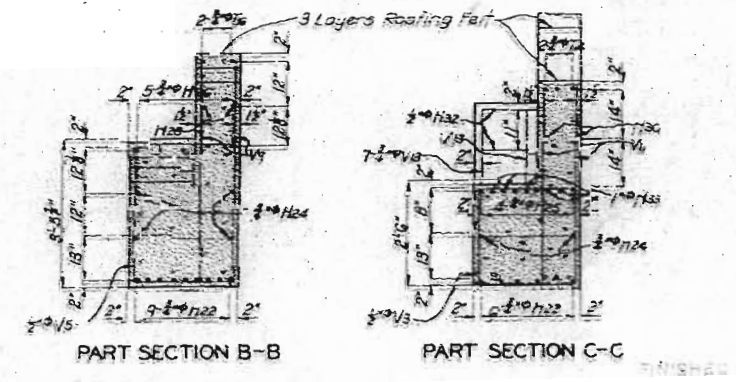
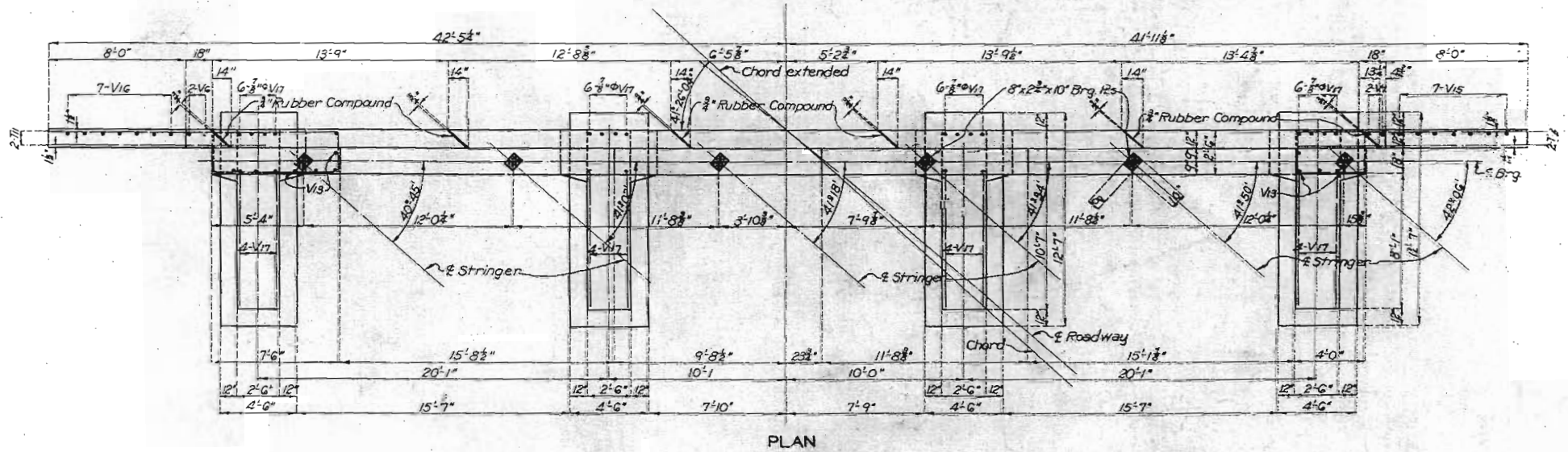
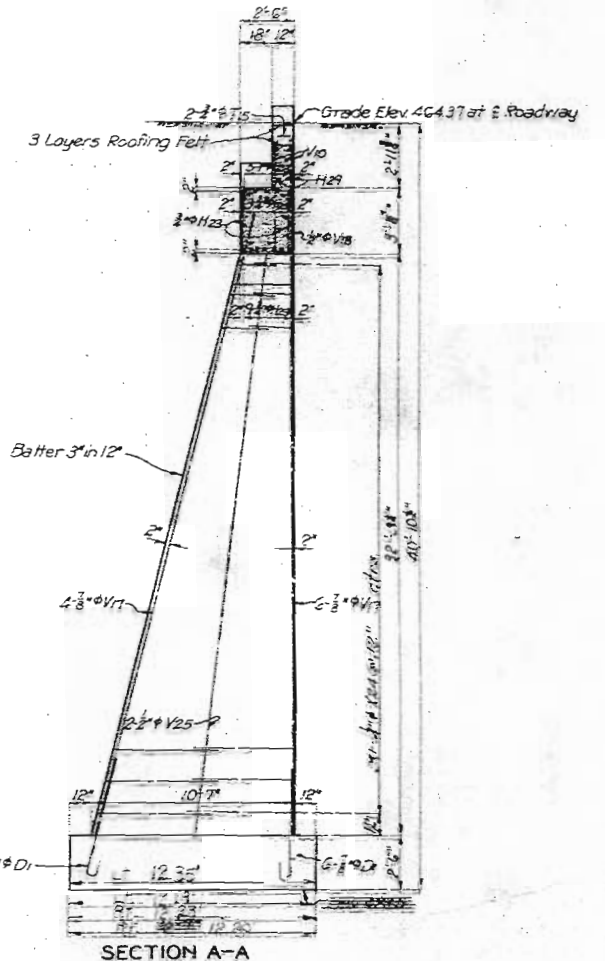
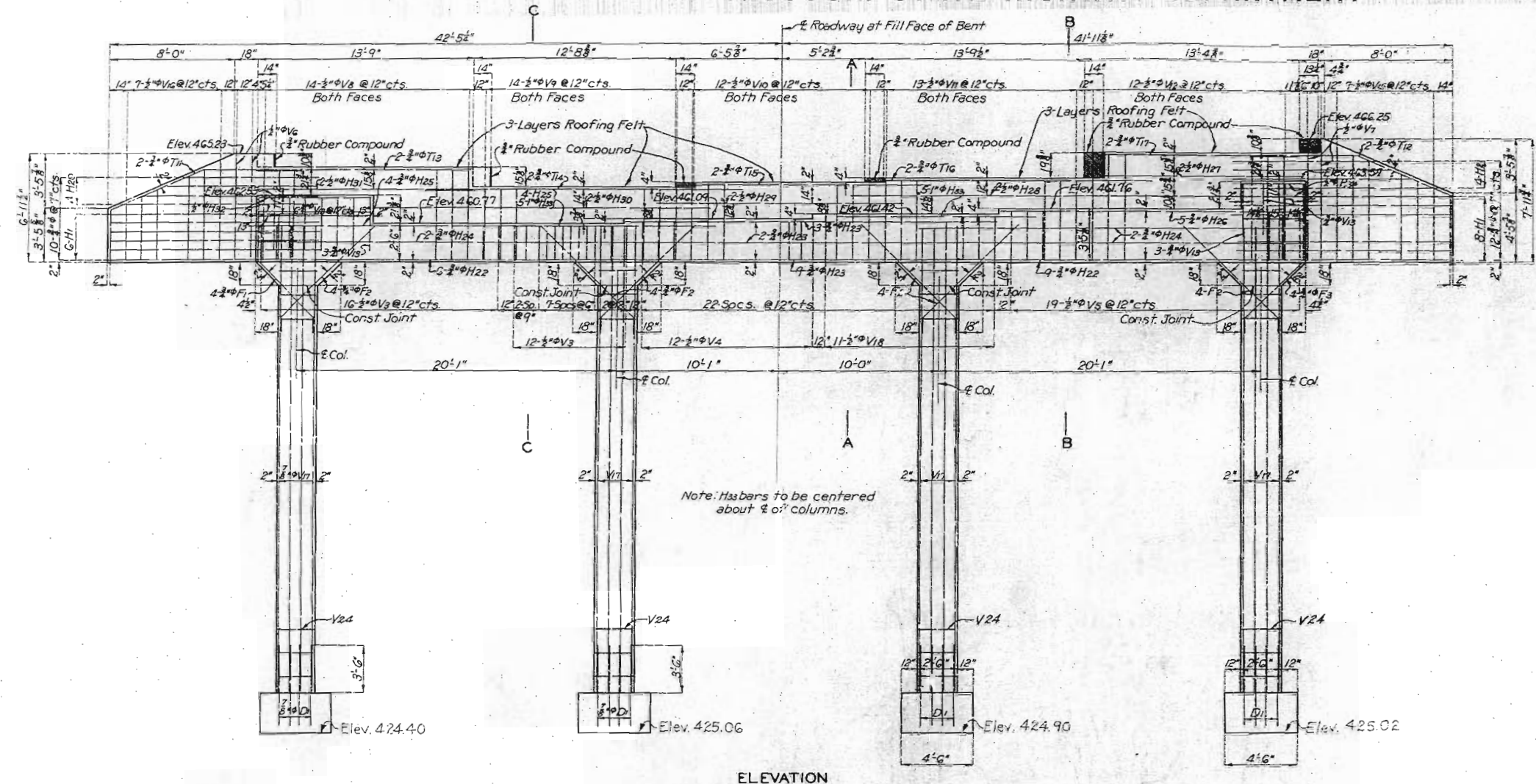
65



# MISSOURI STATE HIGHWAY DEPARTMENT

FED. ROAD DIST. NO.	STATE	FED. AID PROJ. NO.	FISCAL YEAR	SHEET NO.	TOTAL SHEETS
5	MO.	7776	19		

FINAL PLANS



DETAILS OF END BENT NO. 5

**BRIDGE OVER NOIX CREEK**  
 STATE ROAD FROM LOUISIANA TO LINCOLN COUNTY LINE  
 ABOUT 0.5 MILE SOUTH OF LOUISIANA  
 PROJECT NO. PWA 76 R 79 TR-SIC STA. 22+50  
 PIKE COUNTY

66

Drawn Nov. 1934 by P.H.S.  
 Traced Nov. 1934 by H.W.H.  
 Checked Jan. 1935 by R.A.B.

Note: This drawing is not to scale. Follow dimensions.

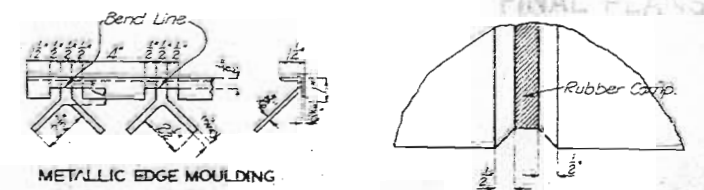
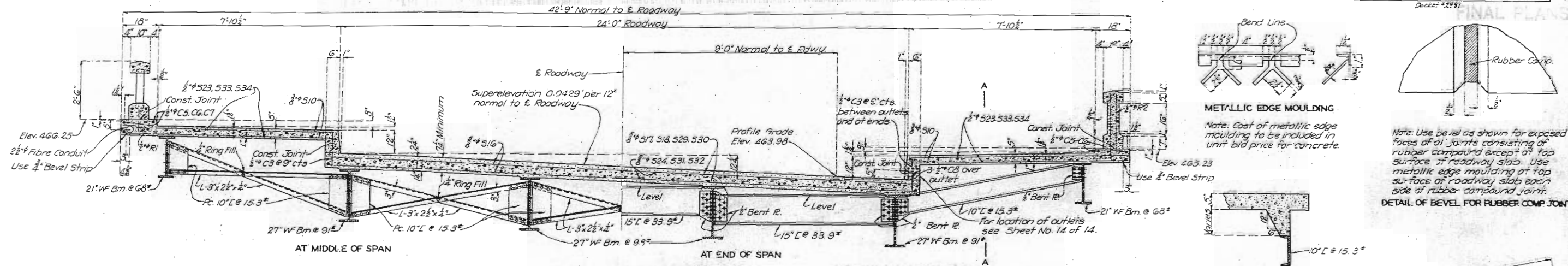
FINISHED  
 Sheet No. 1 of 14.

K-487



# MISSOURI STATE HIGHWAY DEPARTMENT

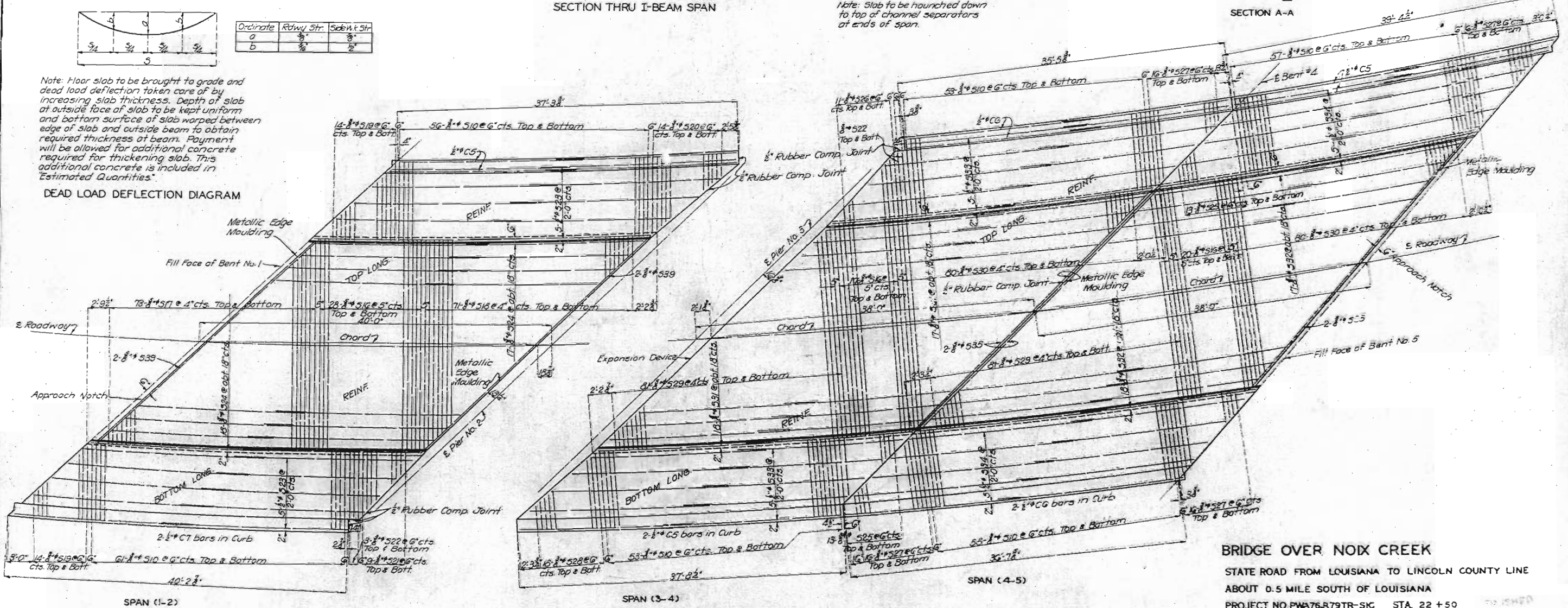
FED. ROAD DIST. NO.	STATE	FED. AID PROJ. NO.	FISCAL YEAR	SHEET NO.	TOTAL SHEETS
5	MO	PWA76-R79TR-SK	19		5



DEAD LOAD DEFLECTION DIAGRAM

Ordinate	Roadway Str.	Span Wt. Str.
a	5/8	3/8
b	3/8	5/8

Note: Floor slab to be brought to grade and dead load deflection taken care of by increasing slab thickness. Depth of slab at outside face of slab to be kept uniform and bottom surface of slab warped between edge of slab and outside beam to obtain required thickness at beam. Payment will be allowed for additional concrete required for thickening slab. This additional concrete is included in "Estimated Quantities".



PLAN OF SLABS ON I-BEAM SPANS

**BRIDGE OVER NOIX CREEK**  
 STATE ROAD FROM LOUISIANA TO LINCOLN COUNTY LINE  
 ABOUT 0.5 MILE SOUTH OF LOUISIANA  
 PROJECT NO. PWA76-R79TR-SK STA. 22 + 50  
 PIKE COUNTY

Drawn Nov. 1934 by H.D.  
 Traced Nov. 1934 by G.W.  
 Checked Jan. 1935 by P.H.

Note: This drawing is not to scale  
 Follow dimensions.

Sheet No. 8 of 14

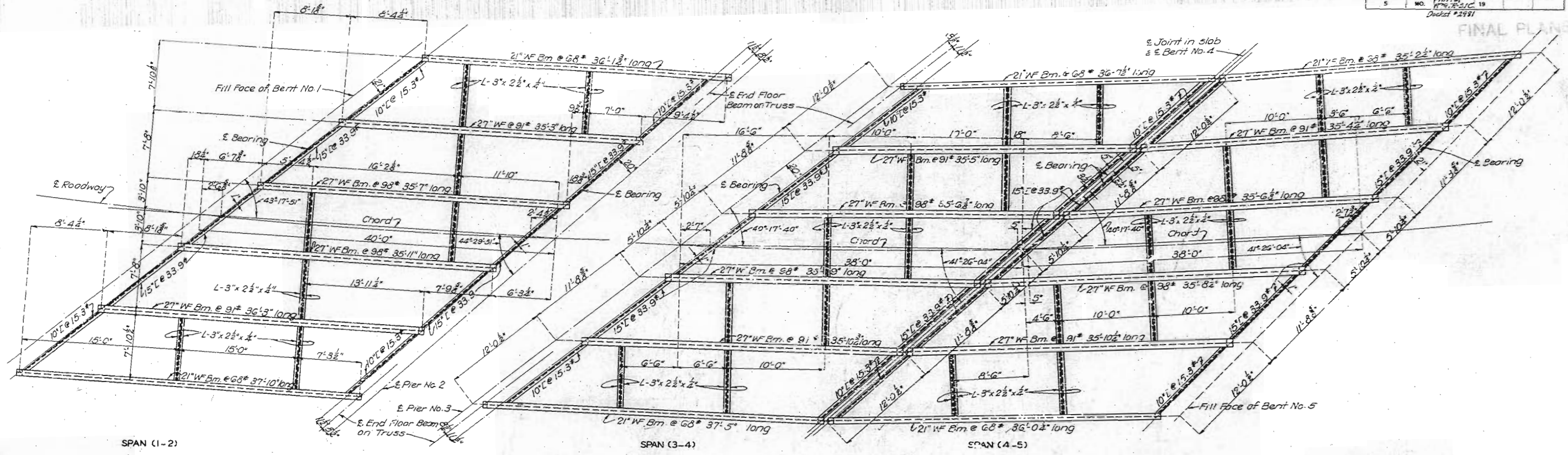
K-487

67

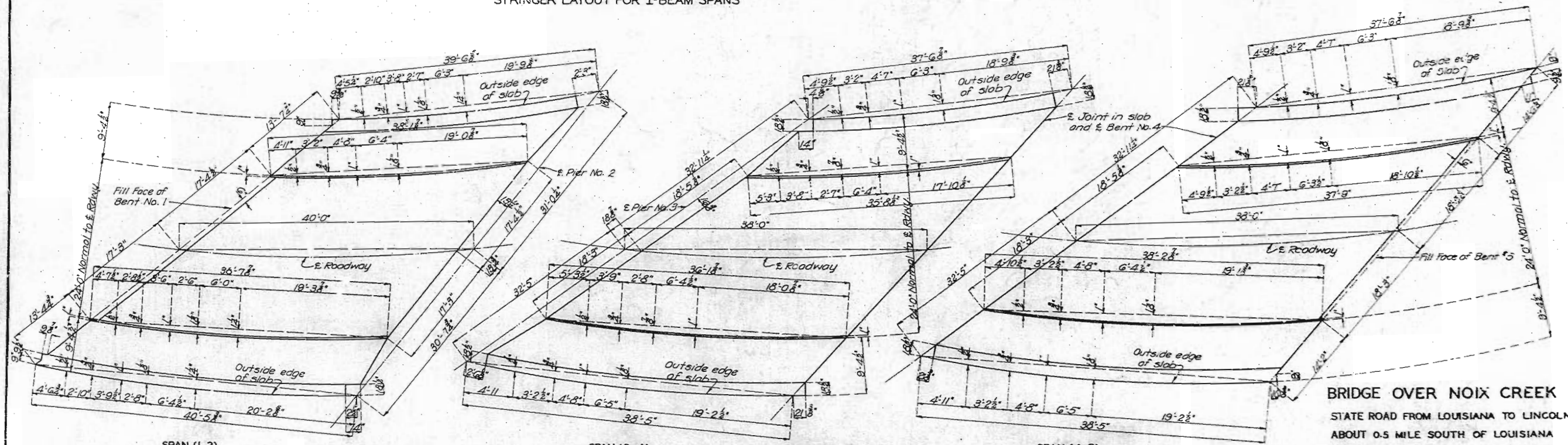


# MISSOURI STATE HIGHWAY DEPARTMENT

FED. ROAD DIST. NO.	STATE	FED. AID PROJ. NO.	FISCAL YEAR	SHEET NO.	TOTAL SHEETS
5	MO.	PWA 76, R 79, R-SIC	19		



STRINGER LAYOUT FOR I-BEAM SPANS



I-BEAM SLAB DIMENSIONS

**BRIDGE OVER NOIX CREEK**  
 STATE ROAD FROM LOUISIANA TO LINCOLN COUNTY LINE  
 ABOUT 0.5 MILE SOUTH OF LOUISIANA  
 PROJECT NO. PWA 76, R 79, R-SIC STA. 22 + 50  
**PIKE COUNTY**

Note: This drawing is not to scale.  
 Follow dimensions.

Drawn Nov. 1934 by H.D.  
 Traced Nov. 1934 by G.W.  
 Checked Jan. 1935 by P.A.D.

Sheet No. 9 of 14.

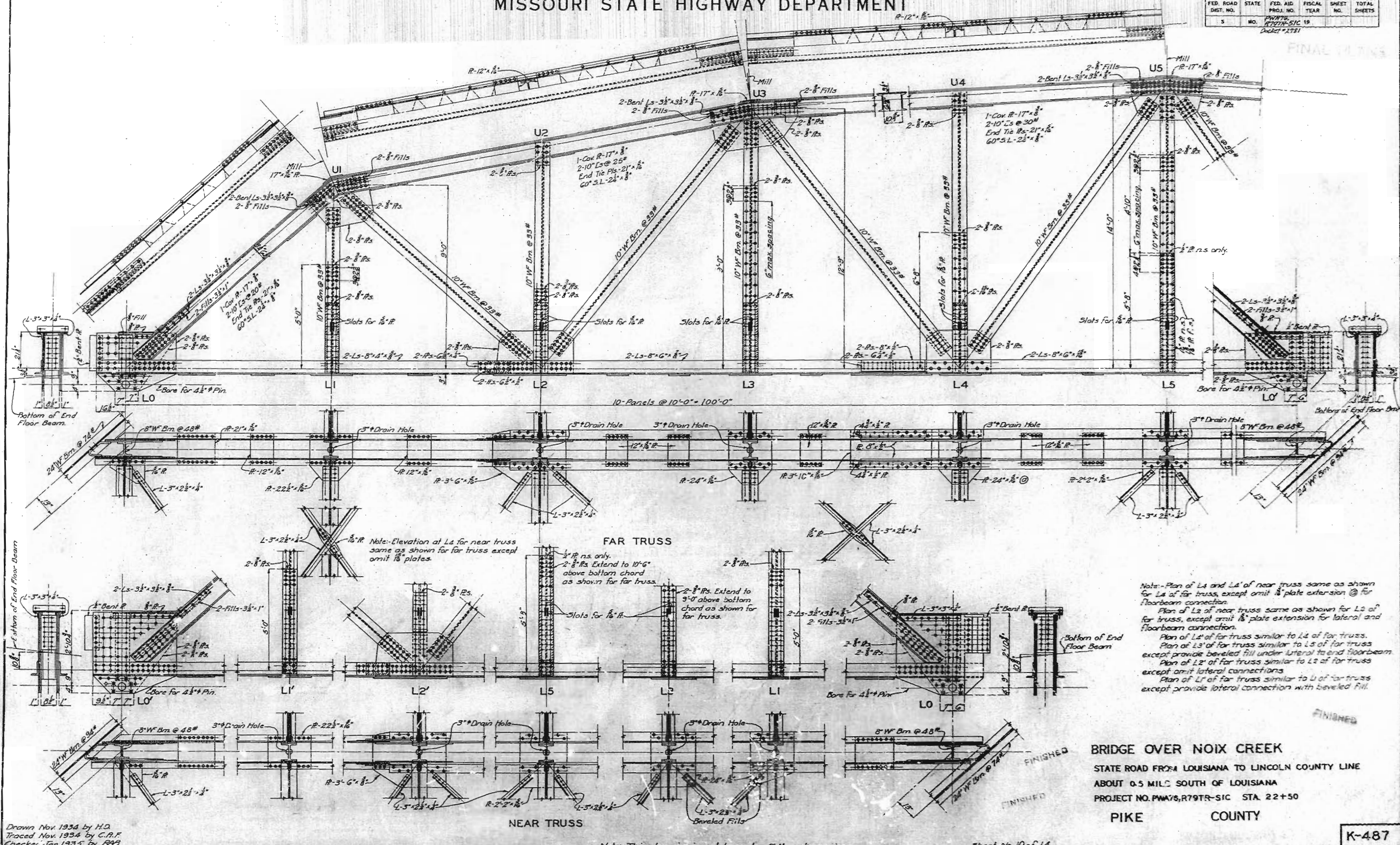
K-487



# MISSOURI STATE HIGHWAY DEPARTMENT

FED. ROAD DIST. NO.	STATE	FED. AID PROJ. NO.	FISCAL YEAR	SHEET NO.	TOTAL SHEETS
5	MO.	FW776, R79TR-SIC 19			

FINAL PLANS



Note: Plan of L4 and L4' of near truss same as shown for L4 of far truss, except omit 1/8" plate extension @ for floorbeam connection.  
 Plan of L2 of near truss same as shown for L2 of far truss, except omit 1/8" plate extension for lateral and floorbeam connection.  
 Plan of L1' of far truss similar to L1 of far truss.  
 Plan of L3' of far truss similar to L3 of far truss except provide beveled fill under lateral to end floorbeam.  
 Plan of L2' of far truss similar to L2 of far truss except omit lateral connections.  
 Plan of L1' of far truss similar to L1 of far truss except provide lateral connection with beveled fill.

**BRIDGE OVER NOIX CREEK**  
 STATE ROAD FROM LOUISIANA TO LINCOLN COUNTY LINE  
 ABOUT 0.5 MILE SOUTH OF LOUISIANA  
 PROJECT NO. FW776, R79TR-SIC STA. 22+50  
 PIKE COUNTY

K-487

Drawn Nov. 1934 by H.O.  
 Traced Nov. 1934 by C.R.F.  
 Checked Jan. 1935 by R.A.D.

Sheet No. 10 of 14

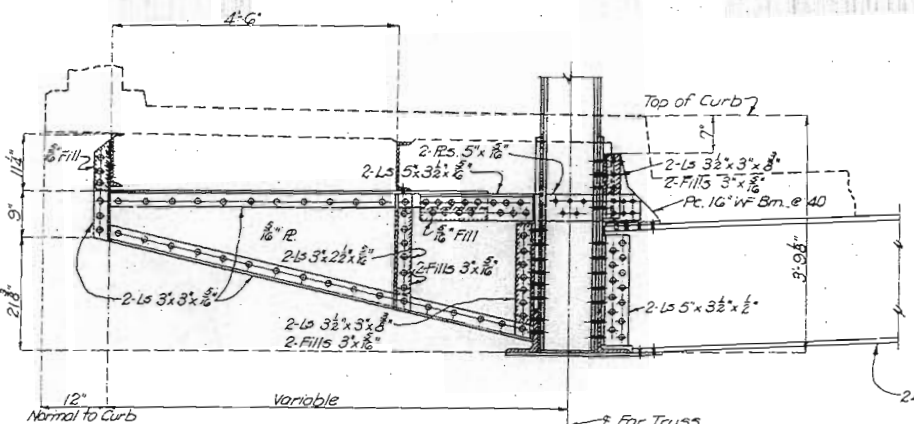
69



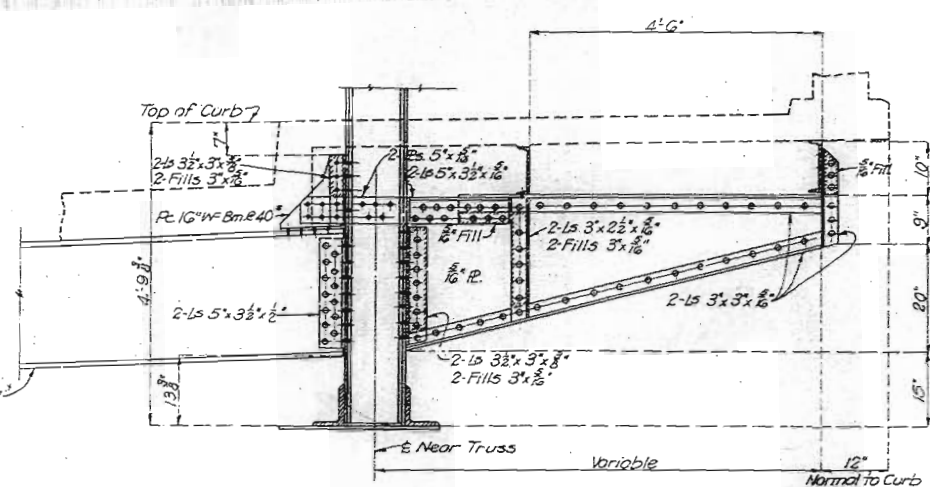
# MISSOURI STATE HIGHWAY DEPARTMENT

FED. ROAD DIST. NO.	STATE	FED. AID PROJ. NO.	FL. CAL. YEAR	SHEET NO.	TOTAL SHEETS
5	MO.	PWA76, R79TR-SIC 19	19		

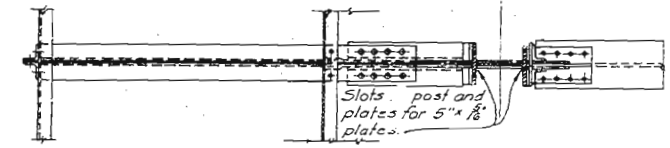
FINAL PLANS



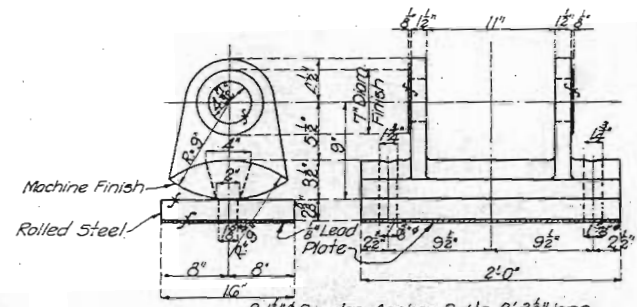
ELEVATION



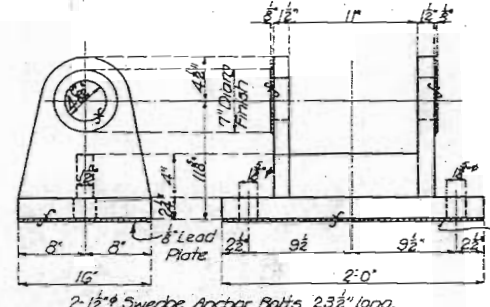
ELEVATION OF BRACKET-NEAR TRUSS



PLAN  
DETAILS OF BRACKET-FAR TRUSS

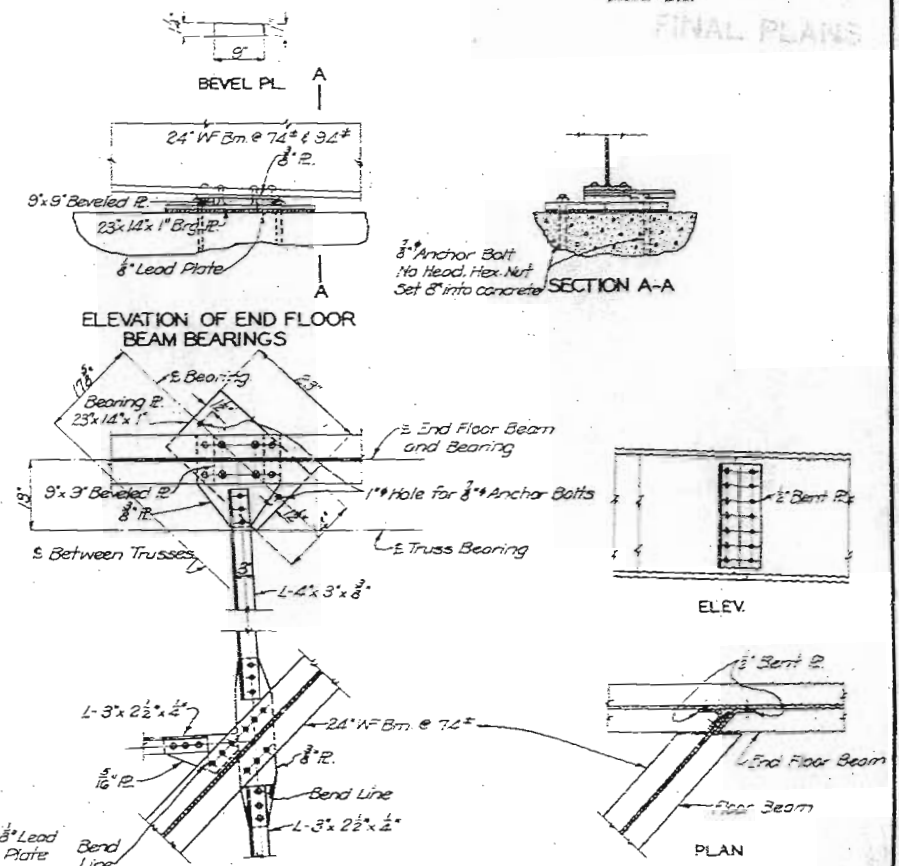


CAST STEEL ROCKER AND STEEL BEARING PLATE



CAST STEEL PEDESTAL

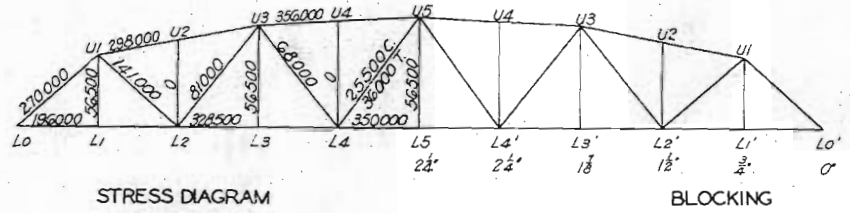
Note: All fillets  $\frac{3}{4}$ "  
 $\frac{1}{2}$ " Turned Steel Pins - Recessed Nut  
 ROCKER AND PEDESTAL FOR TRUSS SPAN



ELEVATION OF END FLOOR BEAM BEARINGS

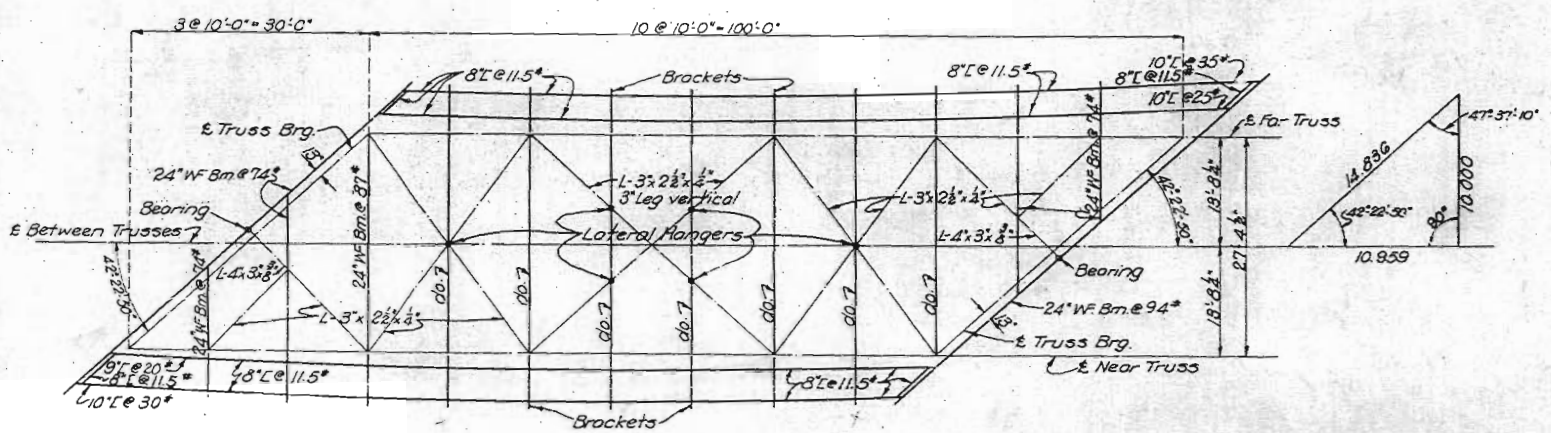
DETAILS OF END FLOOR BEAM BEARING & LATERALS

CONN. OF FLOOR BEAM AT EN'S

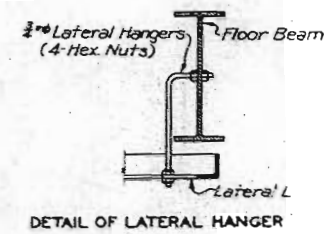


STRESS DIAGRAM

BLOCKING



FLOOR SYSTEM & LATERALS



DETAIL OF LATERAL HANGER

Drawn Nov. 1934 by H.D.  
 Traced Nov. 1934 by G.W.  
 Checked Jan. 1935 by R.A.B.

Note: This drawing is not to scale. Follow dimensions.

Sheet No. 11 of 14.

BRIDGE OVER NOIX CREEK  
 STATE ROAD FROM LOUISIANA TO LINCOLN COUNTY LINE  
 ABOUT 0.5 MILE SOUTH OF LOUISIANA  
 PROJECT NO. PWA76, R79TR-SIC STA 22+50  
 PIKE COUNTY

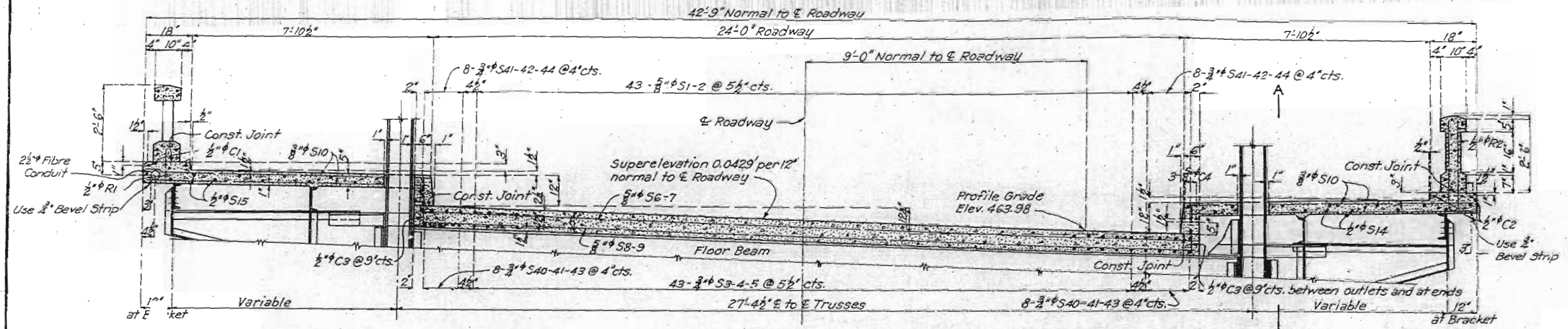
K-487



# MISSOURI STATE HIGHWAY DEPARTMENT

FED. ROAD DIST. NO.	STATE	FED. AID PROJ. NO.	FISCAL YEAR	SHEET NO.	TOTAL SHEETS
5	MO.	PWA 76 R 79 TR-SIC 19			

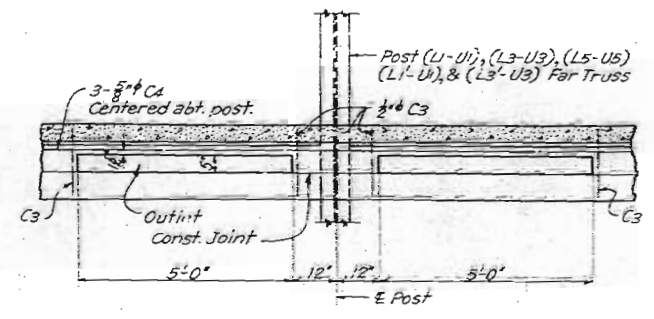
FINAL PLANS



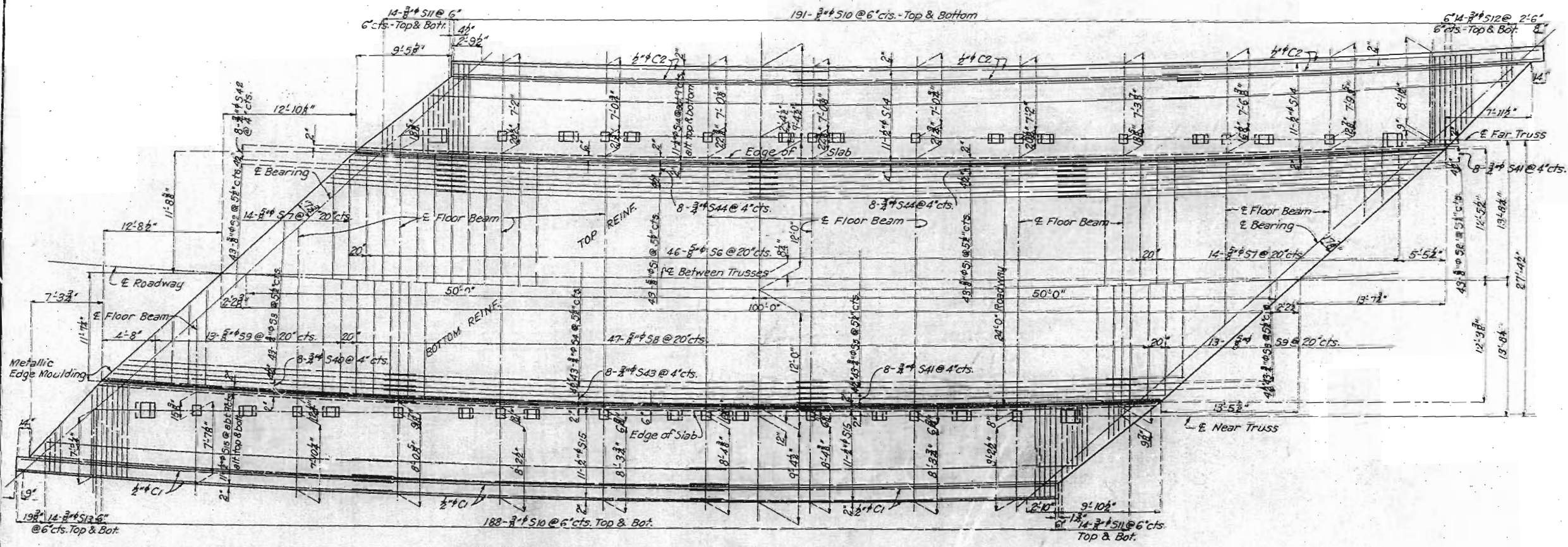
Note: Where brackets connecting floor beams and posts interfere with reinforcing steel bend bars in field to clear.

TRANSVERSE SECTION THRU CONCRETE SLAB ON TRUSS SPAN

Note: Concrete at openings in sidewalk slab to clear truss members 1'

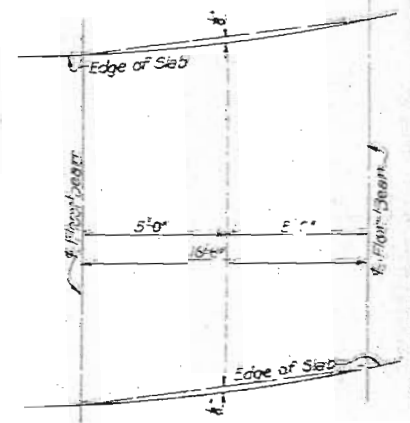


PART SECTION A-A



Note: Where holes in sidewalk slab for truss members interfere with reinforcing bars, bend bars in field to clear.

PLAN OF CONCRETE SLAB ON TRUSS SPAN



SLAB ORDINATE FOR ONE PANEL

Drawn Nov. 1934 By H.D.  
Traced Nov. 1934 By R.J.G.-H.W.H.  
Checked Jan. 1935 By R.A.S.

Note: This drawing is not to scale. Follow dimensions.

FINISHED

BRIDGE OVER NOIX CREEK  
STATE ROAD FROM LOUISIANA TO LINCOLN COUNTY LINE  
ABOUT 0.5 MILE SOUTH OF LOUISIANA  
PROJECT NO. PWA 76 R 79 TR-SIC STA. 22+50  
PIKE COUNTY

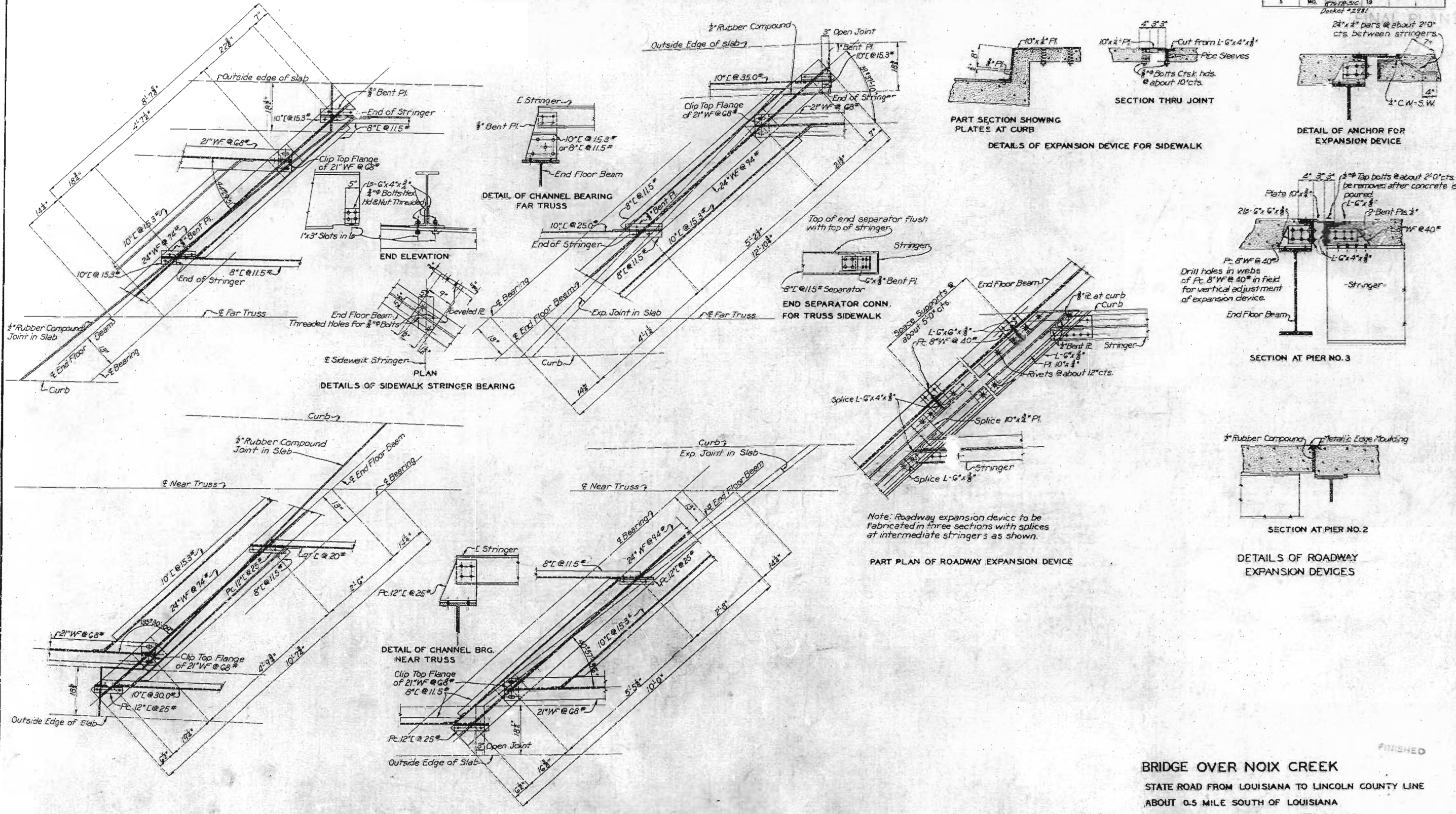
K-487

Sheet 15 of 20



# MISSOURI STATE HIGHWAY DEPARTMENT

FED. ROAD DIST. NO.	STATE	FED. AID PROJ. NO.	FISCAL YEAR	SHEET NO.	TOTAL SHEETS
5	MO.	PWA76, R79TR-SIC	19		



**BRIDGE OVER NOIX CREEK**  
 STATE ROAD FROM LOUISIANA TO LINCOLN COUNTY LINE  
 ABOUT 0.5 MILE SOUTH OF LOUISIANA  
 PROJECT NO. PWA76, R79TR-SIC STA. 22+50  
**PIKE COUNTY**

Drawn Nov. 1934 By H.D.  
 Traced Nov. 1934 By H.W.H.  
 Checked Jan. 1935 By R.A.B.

Note: This drawing is not to scale. Follow dimensions.

Sheet No. 13 of 14

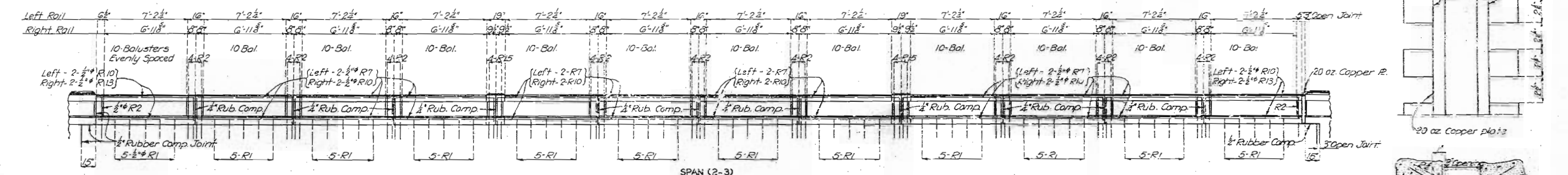
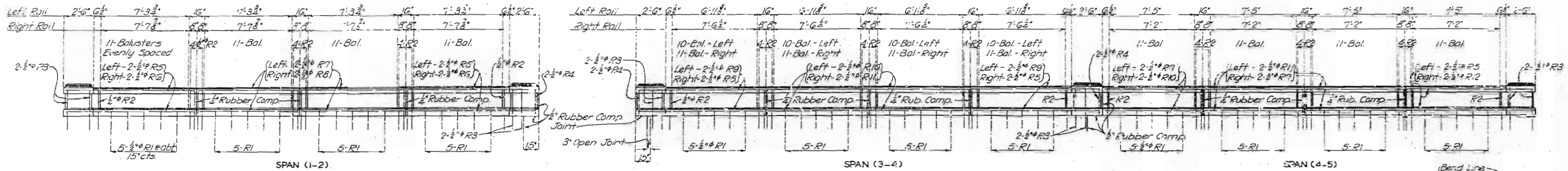
K-487



# MISSOURI STATE HIGHWAY DEPARTMENT

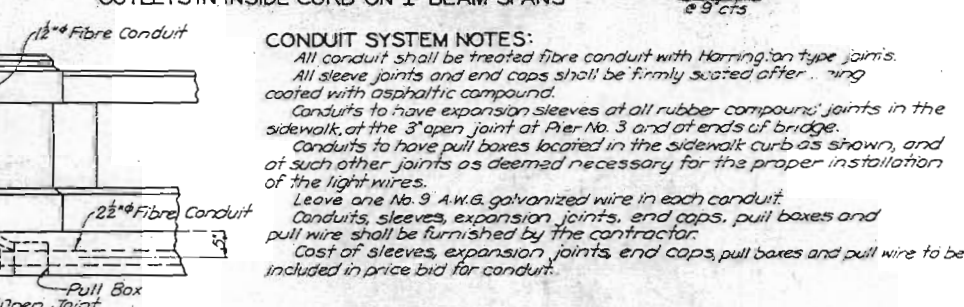
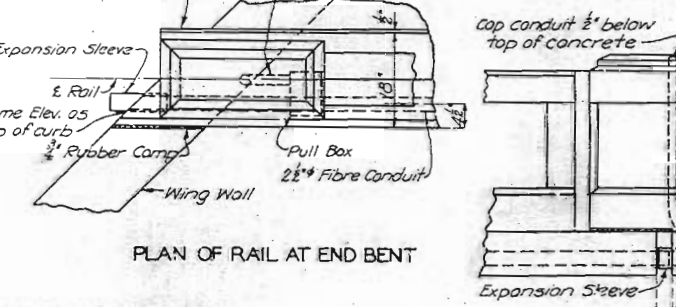
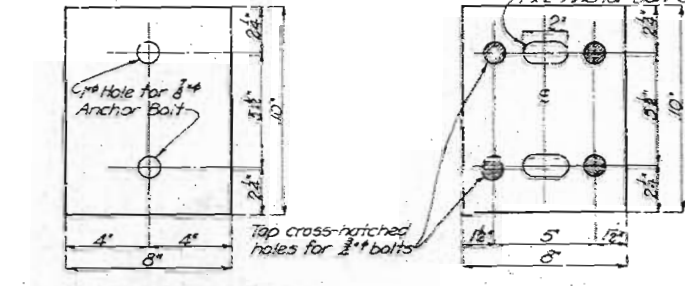
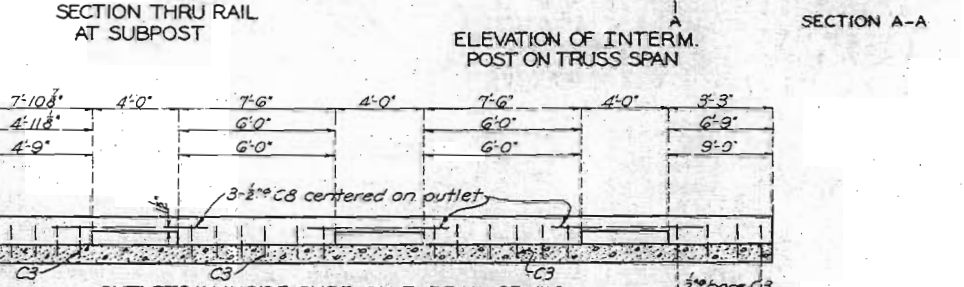
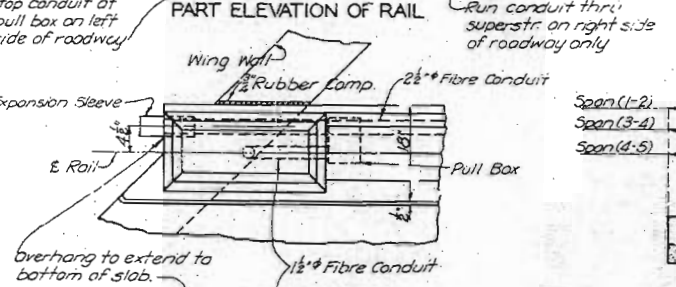
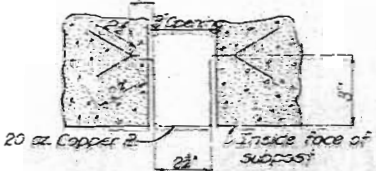
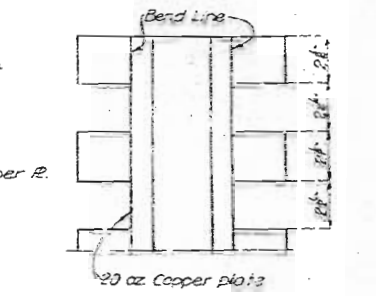
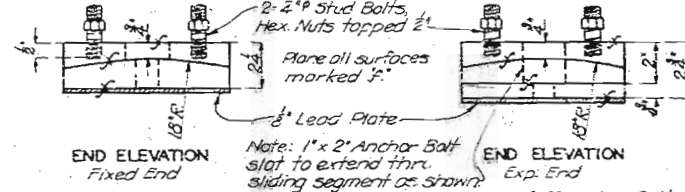
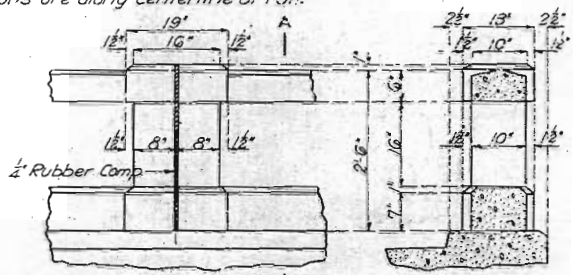
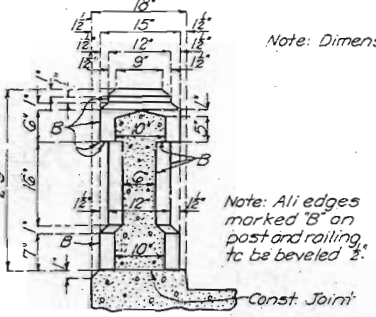
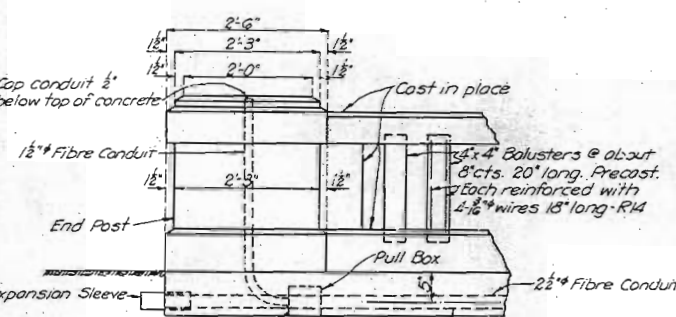
FED. ROAD DIST. NO.	STATE	PROJECT NO.	FISCAL YEAR	SHEET NO.	TOTAL SHEETS
5	MO.	1934-35	19		

FINAL PLAN



ELEVATION OF HANDRAIL

Note: Dimensions are along centerline of rail.



**DETAILS OF BEARING PLATES**  
Note: 16 fixed and 16 expansion plates required.

**BRIDGE OVER NOIX CREEK**  
STATE ROAD FROM LOUISIANA TO LINCOLN COUNTY LINE  
ABOUT 0.5 MILE SOUTH OF LOUISIANA  
PROJECT NO. PWA76.R79TR-SIC STA 22+50  
**PIKE COUNTY**

Drawn Nov. 1934 by H.D.  
Traced Nov. 1934 by G.W.  
Checked Jan. 1935 by PAB.

Note: This drawing is not to scale.  
Follow dimensions.



5 MO. PWA 76  
3 PIKE 79TR

TITLE SHEET

SEE

PIKE CO. RTE. 79TR

SEC 1 C

K-487

59

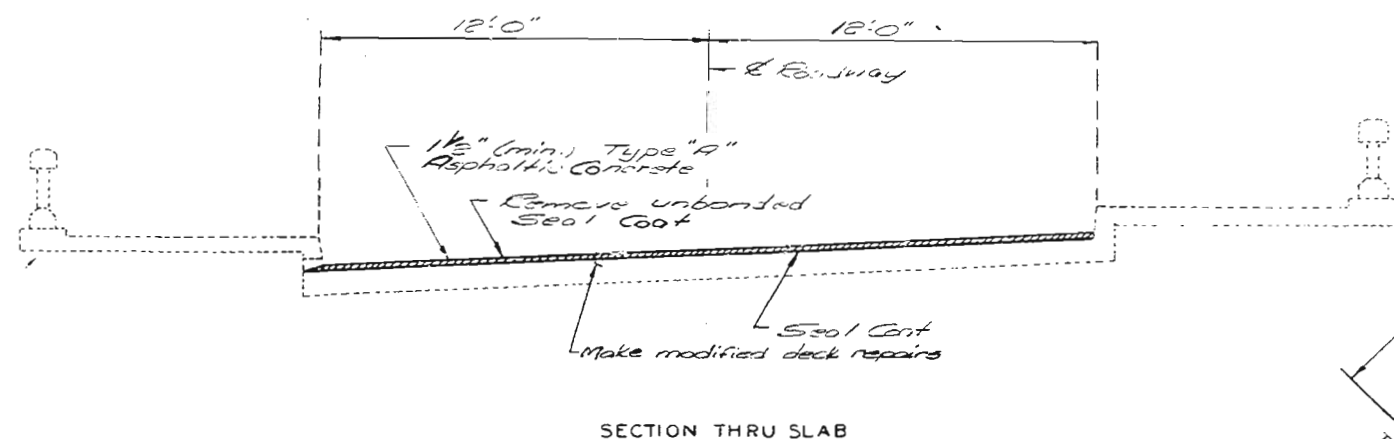
FINAL SURVEY  
DATE: \_\_\_\_\_  
BY: \_\_\_\_\_

ORIGINAL SURVEY  
DATE: \_\_\_\_\_  
BY: \_\_\_\_\_

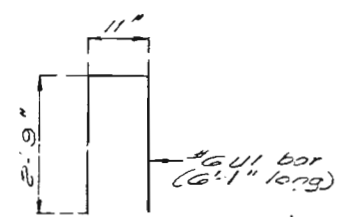


MISSOURI HIGHWAY AND TRANSPORTATION COMMISSION

STATE	PROJ NO	SHEET NO
MO.		1
SEC/SUR 20	TWP 34N RGE 12W	

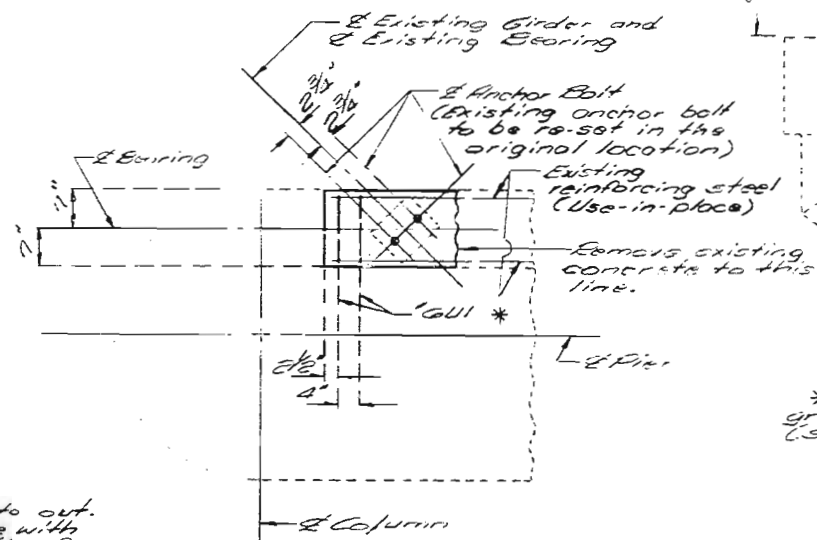


SECTION THRU SLAB

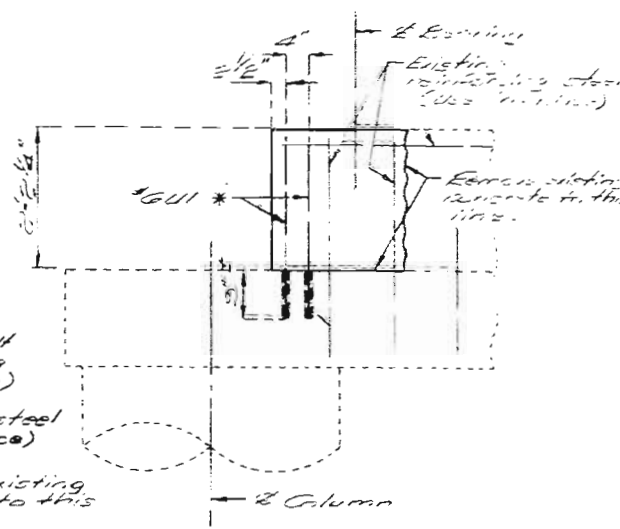


BENDING DIAGRAM

*Notes: All dimensions are out to out. Bands shall be in accordance with the CRSI Manual of Standard Practice for Detailing Reinforced Concrete Structures stirrup and tie dimensions. Bar length is measured along centerline bar to the nearest inch. Reinforcement shall be grade 60. Cost of furnishing and installing #6UI bar shall be included in price bid for Substructure Repair (Formed).*



PLAN

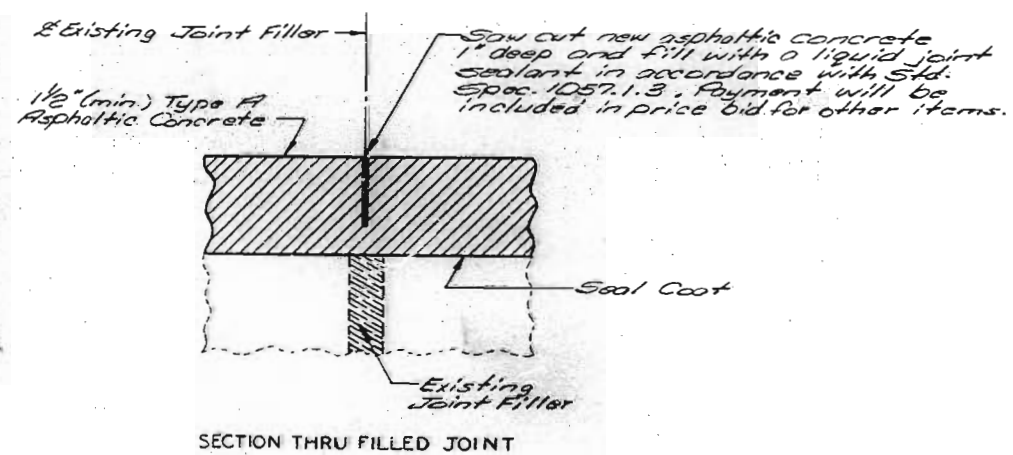


ELEVATION (West Side)

\* Drill 1" hole 3" deep and grout #6UI into existing concrete (See Spec. Prov.).

DETAIL OF SUBSTRUCTURE REPAIR (Pier #2 only) (See Special Provisions)

124



SECTION THRU FILLED JOINT

ESTIMATED QUANTITIES		
ITEM		TOTAL
Modified Deck Repair	Sq. Ft.	52
Steel Bar Doms	Each	1
Repair Cement (Asphaltic Concrete)		
GC-70 or AC 20 (Type A Mix)	Ton	2.4
Mineral Aggregate (Asph. Conc.) (Type A Mix)	Ton	4.5
Cover Aggregate (See Spec. Prov.)	Ton	9
Polymer Modified Asphalt Seal Coat	Gal	200
Substr. Rep. (Formed)	See Spec. Prov. Lump Sum	1

*Notes: Polymer Modified Asphalt Emulsion, Grade CRS-2P (Polymer Modified) shall be applied at a rate of .35 gal. per sq. yd. Cover Aggregate (See Special Prov.) shall be applied at a rate of .015 tons per sq. yd.*

REPAIRS TO BRIDGE OVER NOIX CREEK

STATE ROAD FROM LOUISIANA TO CLARKSVILLE IN LOUISIANA

PROJECT NO. 3-P-79-277 See A#B STA. 22 + 50

JOB NO. 3-P-79-277

RTE 79

PIKE

COUNTY

DESIGNED DEC. 1987  
 DETAILED DEC. 1987  
 CHECKED Dec. 1987

Note: This drawing is not to scale. Follow dimensions.

SEE FINAL PLANS

Sheet No. 1 of 2

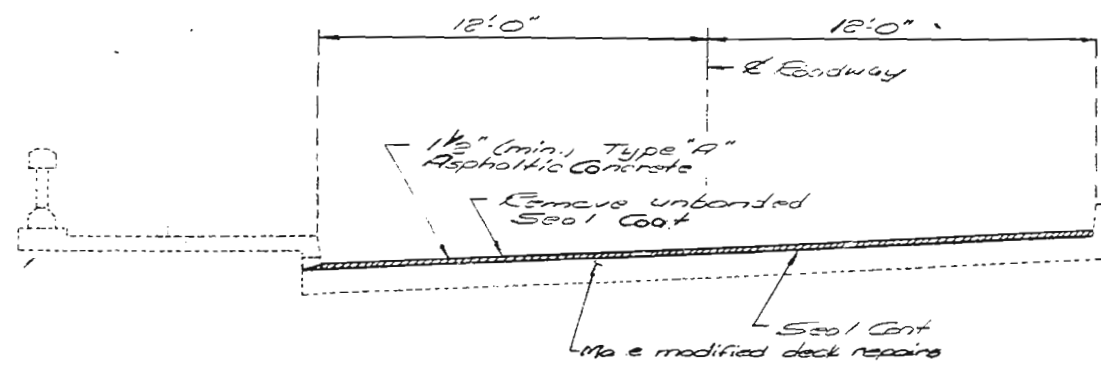
DATE 3/2/88

STD. 712.40
STD. 606.00
K-487R

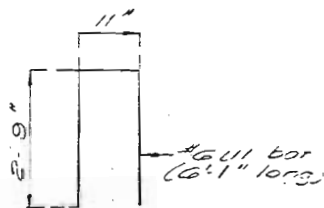


MISSOURI HIGHWAY AND TRANSPORTATION COMMISSION

STATE	PROJ NO	SHEET NO
MO		1
SEC / SUR 20	TWP 54N RGE 1W	

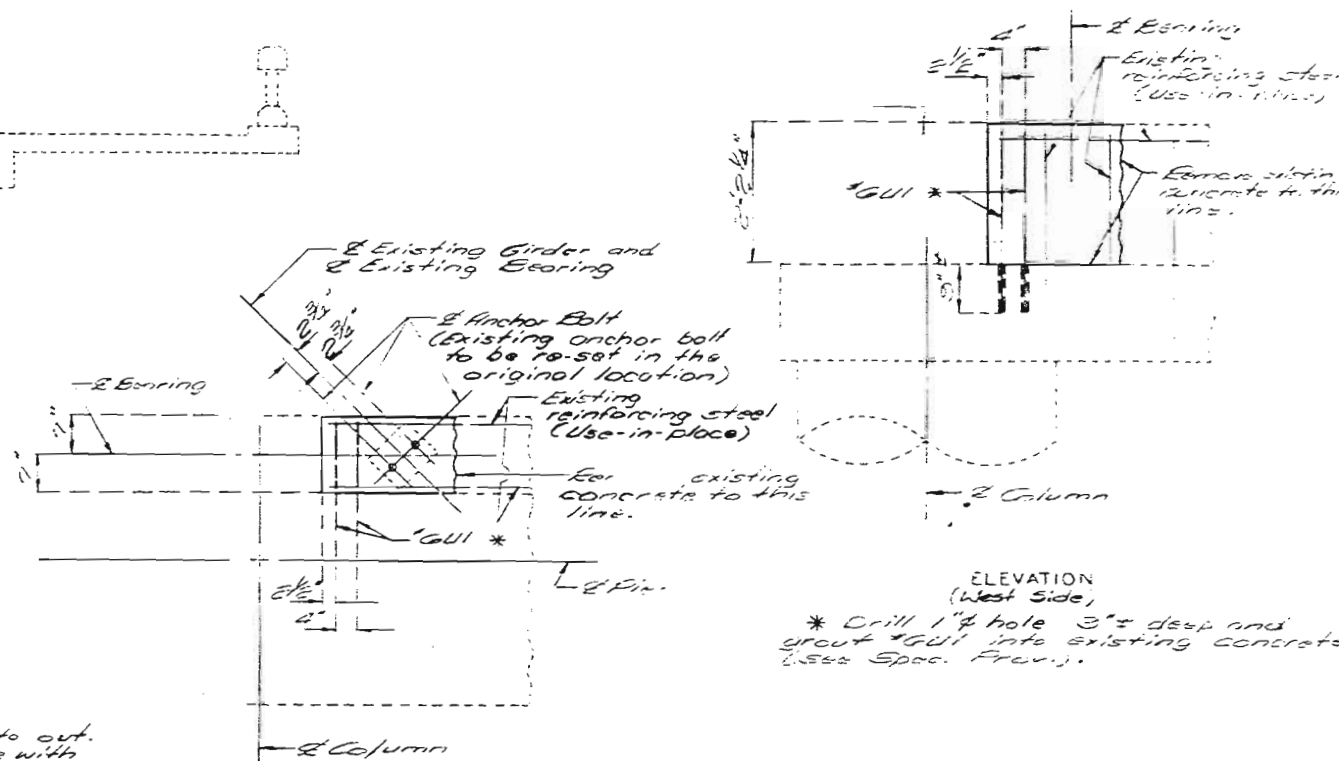


SECTION THRU SLAB



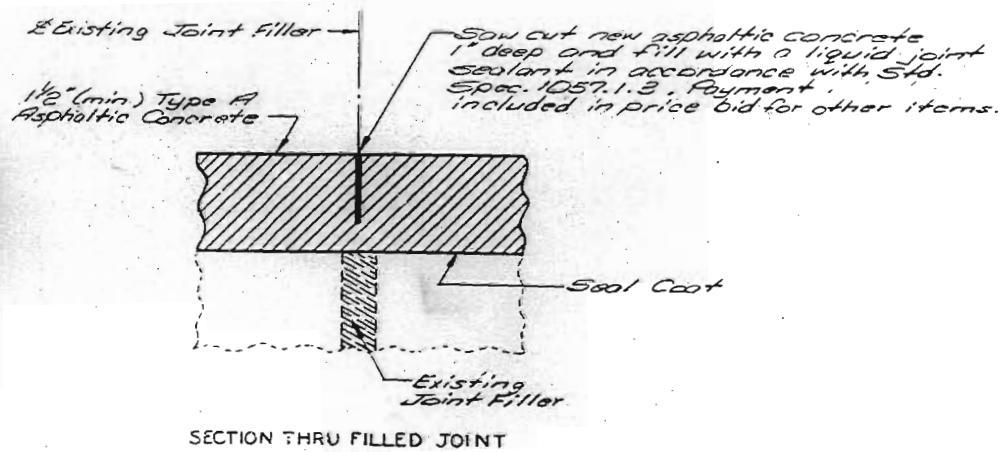
BENDING DIAGRAM

Note: All dimensions are out to out. Ends in accordance with the CSI Manual of Standard Practice for Detailing Reinforced Concrete Structures stirrup and tie dimensions. Bar length is measured along center line to the nearest inch. Reinforcement shall be grade 60. Cost of furnishing and installing #6 U1 bar shall be included in price bid for Substructure Repair (Formed).



PLAN

DETAIL OF SUBSTRUCTURE REPAIR (Pier #2 only) (See Special Provisions)



SECTION THRU FILLED JOINT

ITEM	TOTAL
Modified Deck Repair	Sq. Ft. 26
Steel Bar Corners (C.O.#1)	Each 1
Asphalt Cement (Asphaltic Concrete, 60-70 or AC 20 (Type A Mix))	Ton 3.0
Mineral Aggregate (Asphaltic Concrete, Type A Mix)	Ton 37
Cover Aggregate (See Spec. Prov.)	Ton 4
Polymer Modified Asphalt (Seal Coat)	Gal 250
Force Account (Full depth repair)	\$707.10
Substructure Repair (Formed) See Spec. Prov. Lump Sum	0

Note: Polymer Modified Asphalt Emulsion, Grade CE5-2P (Polymer Modified) applied at a rate of .43 gal. per sq. yd.  
Cover Aggregate (See Special Prov.) applied at a rate of .05 tons per sq. yd.

REPAIRS TO BRIDGE OVER NOIX CREEK

STATE ROAD FROM LOUISIANA TO CLARKSVILLE IN LOUISIANA

PROJECT NO. 3-P-79-277 See A&B STA. 22 + 50

JOB NO. 3-P-79-277

RTE. 79

PIKE

COUNTY

DATE 3/2/88

STD. 712.40
STD. 606.00
K-487R

DESIGNED DEC. 1987  
DETAILED DEC. 1987  
CHECKED Dec. 1987

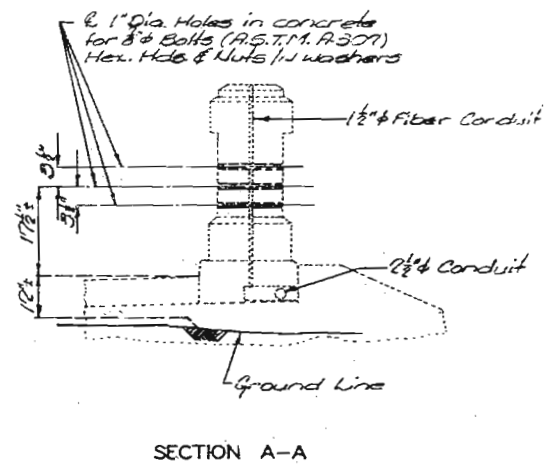
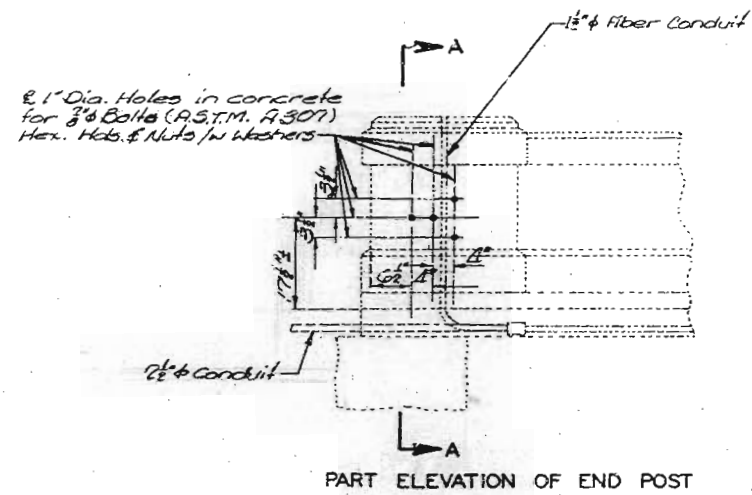
Note: This drawing is not to scale. Follow dimensions.

Sheet No. 1A of 2

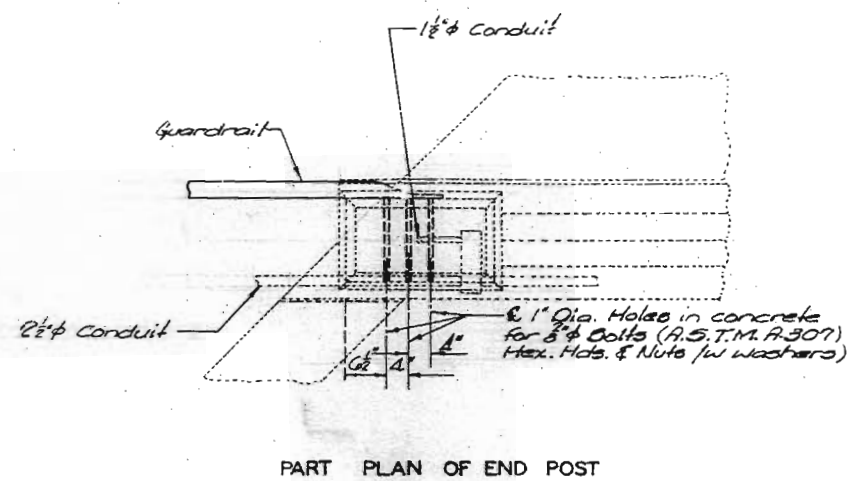
125



STATE	PGJ. NO.	SHEET NO.
MO.		2



Note: Guardrail connection required at all four corners of structure.  
Cost for Field Drilling 1" holes to be included in Price bid for other items.



DETAILS OF GUARDRAIL ATTACHMENT TO EXISTING END POST

126

DETAILED DEC. 1987  
CHECKED Dec 1987

Note: This drawing is not to scale. Follow dimensions.

Sheet No. 2 of 2.

PIKE COUNTY

K-487 R