

MS 61

Historic American Engineering Record
Department of the Interior, Washington, D.C.

76

Goldsbrough Creek Bridge

MS 0061

25. PHOTOS AND SKETCH MAP OF LOCATION

23

2

1



23

2

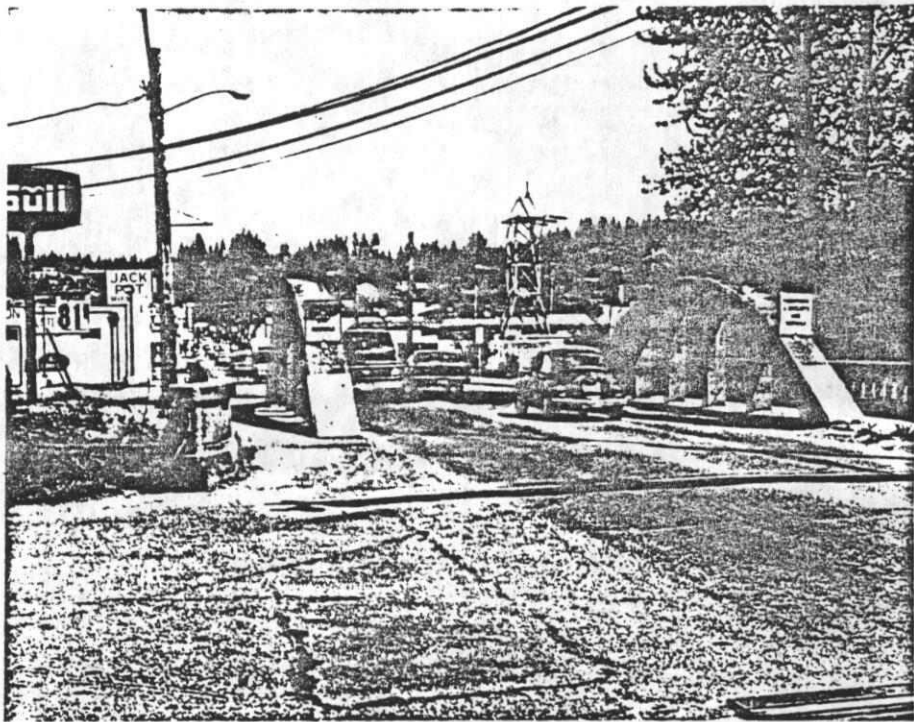
2



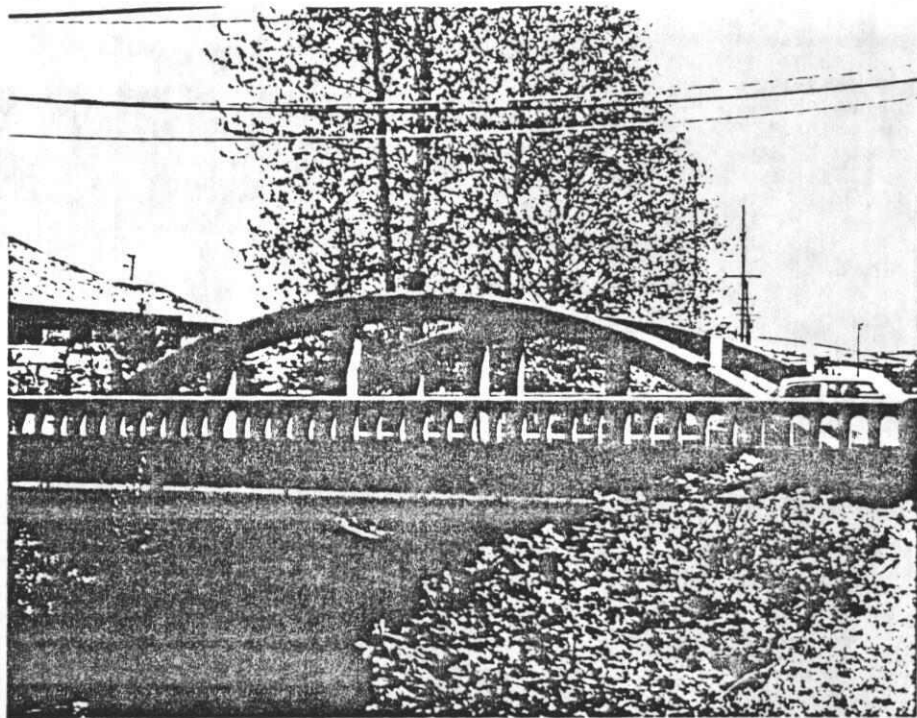
DESCRIPTION (CONTINUED)

REFERENCES (CONTINUED)

ABSTRACT																			
HAER NO	LC	TECH REPORT	HIST REPORT	CONTEMP PHOTO	HIST PHOTO	CONTEMP DRWG	HIST DRWG	COLOR PLATE	PHOTOGRAM	SW	FILM								



Goldsborough Creek Bridge



Goldsborough Creek Bridge

Historic Register Report

Historic Name: Goldsborough Creek Bridge

Address: WA 3

City: Shelton

County: Mason

[Download nomination form](#)

Historic Use: Transportation

Style: None

Built: 1923

Architect:

Builder: Macrae Brothers

Smithsonian Number: 45MS00061

Date Listed: 7/16/1982

Listing Status: WHR/NR

Classification: STR

Resource Count: 1

Area of Significance: Engineering

Level of Significance: State

Listing Criteria: C

Statement of Significance

Photos

