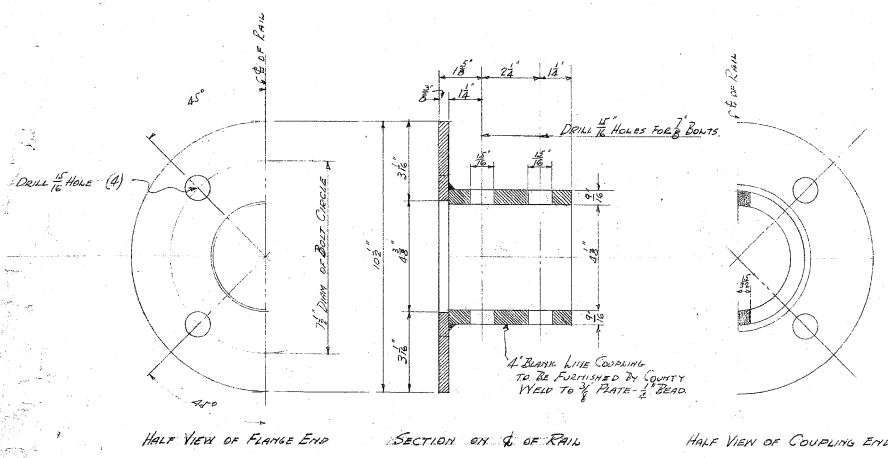


ST. CLAIR COUNTY ROAD COMMISSION
 PORT HURON MICHIGAN
 PLAN AND PROFILE OF PRESENT CONDITIONS
 BRIDGE 3193-13-405
 BRIDGE 13-66
 DENIS H. P. 1
 Y-13

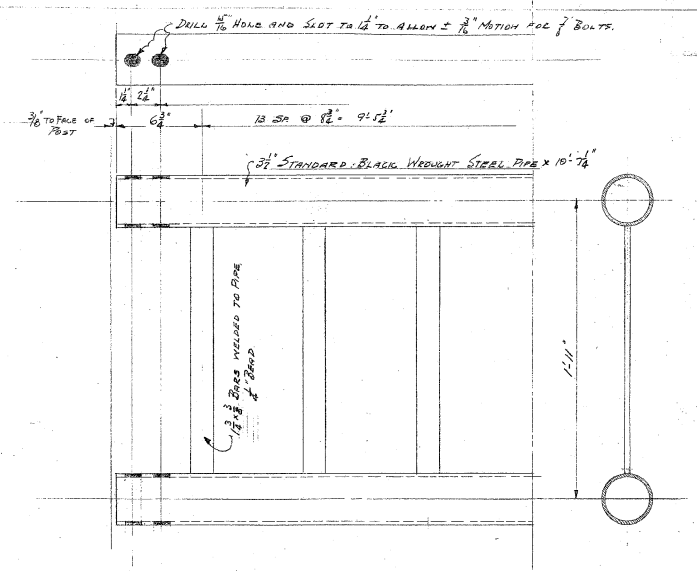
Do Not Work from this Sheet. The information shown here is for reference only. No pay items are shown.

EXISTING BRIDGE

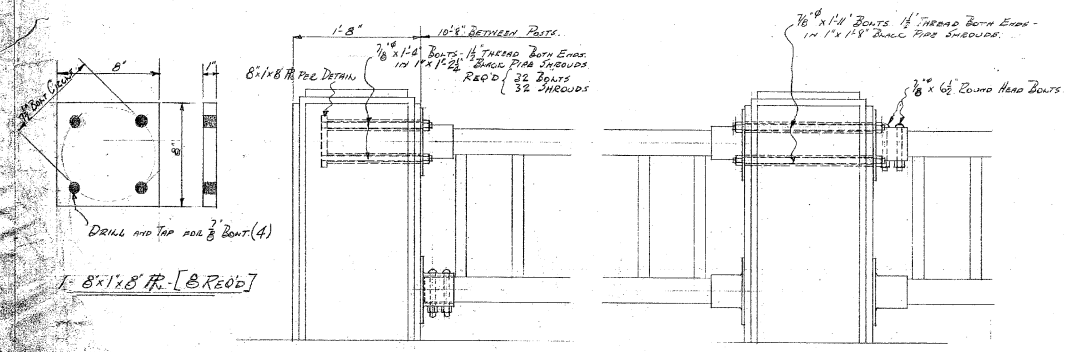


HALF VIEW OF FLANGE END SECTION ON 1/4 OF RAIL HALF VIEW OF COUPLING END

DETAIL OF RAIL FITTING [16 REQ'D]

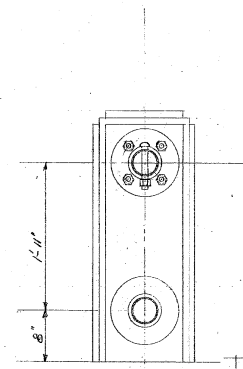


DETAIL OF BUILT-UP RAIL SECTION [4 REQ'D]



SIDE VIEW OF END POST SIDE VIEW OF INTERMEDIATE POST

TYPICAL VIEWS OF ASSEMBLED RAIL



END VIEW OF INT. POST

KILBURN RD. BRIDGE

ST. CLAIR COUNTY ROAD COMMISSION
POET HURON MICHIGAN

W.P.A. - SC-6 3198-13-405
DETAILS OF SECTIONAL RAIL FITTINGS

| | |
|------------------|-------|
| DENNY - E-8-B-76 | |
| DENNY 1704 | |
| | Y-12B |

Do Not Work from this Sheet. The information shown here is for reference only. No pay items are shown.

EXISTING BRIDGE

Kilburn Road over Plum Creek