

Inventory of Metal Truss, Movable, and Steel Arch Bridges

Bridge #: 29 0049 **District** 10
Road: STATE ROUTE 4 **Route:** 4 **PM:** 4.42
Feature Intersected: MIDDLE RIVER

Evaluation Summary (NRHP Eligibility)

Previous: 2 Eligible
Update: 2 Eligible

City: **County** San Joaquin
Other Location Info: WEST OF VICTORIA ISLAND ON SR4

Description: Bridge 29 0049 has four steel, rigid-connected truss spans carrying two lanes: a Swing through truss mainspan, 260 feet long, and three Warren pony truss secondary spans with vertical supports, each 92 feet long.

Year Built: 1915 **Moved:** No
2nd Date: 1975 Year Altered Year Moved

Owner: State
Builder: American Bridge Company
Designer: F. E. Quail, San Joaquin County Surveyor
Contractor: Healy (Tibbits-Pacific)

Surveyor: CDM / JMC
Survey Date: 4/9/2003

<u>Points</u>	<u>1986</u>	<u>2003</u>
Date of Construction	12 1910-1919 period	12 1910-1919 period
Builder/Designer Significant	12 Major example of signif. builder / designer	12 Major example of signif. builder / designer
<i>Length:</i>		
Number of Spans	6 4 span(s)	6 4 span(s)
Length of Spans	8 pony >80; through >150; deck >150	8 pony >80; through >150; deck >150
Surviving # of Type	4 17	6 15
<i>Special Features:</i>		
Pin Connected	0 Is not pin-connected	0 Is not pin-connected
Iron	0 Is not iron	0 Is not iron
Decorative Feature	2 minor	2 minor
<i>Aesthetics</i>		
Site	4 Good	4 Good
Structural	5 Excellent	5 Excellent
<i>Integrity:</i>		
Location/Setting	0 Excellent	0 Excellent
Design/Material	0 Excellent	0 Excellent
Feeling/Association	0 Excellent	0 Excellent
Transport. / Hist.Assoc.	7 State	N/A
Totals	60	55

Criterion A Evaluation
See Historic Evaluation.

Notes:
Swing structure likely set in place, Caltrans bridge log list this as thru truss. Surviving number of type score increased.

Historic Evaluation

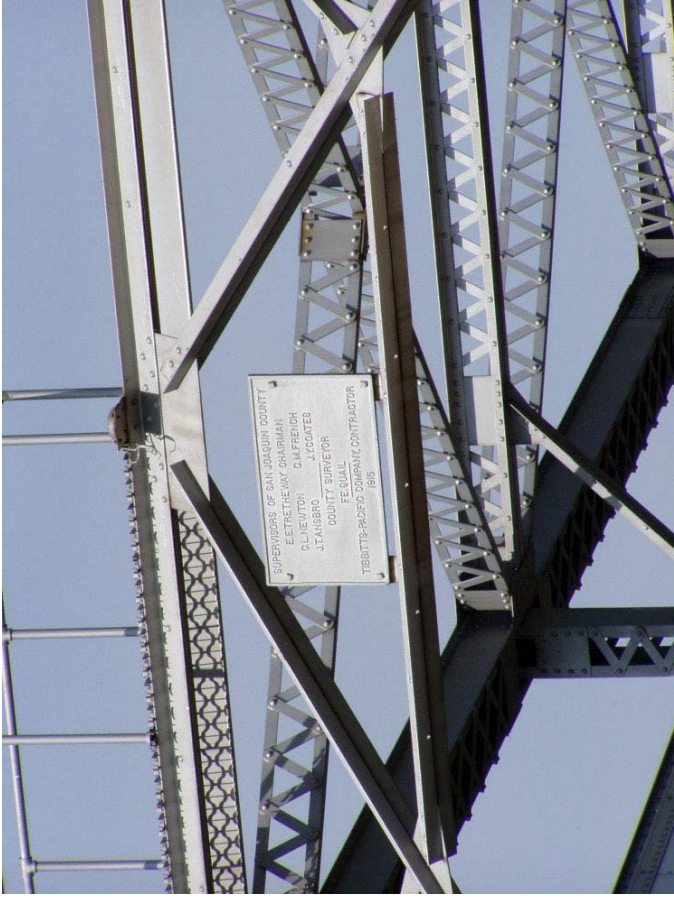
The Middle River Bridge (29 0049) in San Joaquin County was found eligible for listing in the National Register of Historic Places as part of the bridge inventory conducted by Caltrans in the 1980s. The evaluation concluded that the bridge was eligible for listing under Criterion C as it embodied the distinctive characteristics of type, period, and method of construction, as well as Criterion A, as a vital component in an important highway. Built in 1915 on Highway 4, one of the earliest east-west routes in the state, the Middle River Bridge shares the distinction of being the second oldest unmodified swing bridge in California with the Old River Bridge (29 0045). It is a major example of an American Bridge Company bridge in California. With a swing span of 260 feet and three secondary Warren spans of 92 feet each, the Old River Bridge is a long swing bridge.



Facing southwest



Facing southwest



Facing west



Facing west

Location Map

