

CALIFORNIA STATE MINING BUREAU
FERRY BUILDING, SAN FRANCISCO
FLETCHER HAMILTON State Mineralogist

Mines and Mineral Resources

Of the Counties of

Colusa, Glenn, Lake, Marin,
Napa, Solano, Sonoma, Yolo

COMPLIMENTS OF
F. MCN. HAMILTON
STATE MINING BUREAU

By WALTER W. BRADLEY, Field Assistant



CALIFORNIA
STATE PRINTING OFFICE
1915

14456—A

connects with the main line. The material is utilized for ballast, but none was taken out during the year 1913.

Tychson Quarry. Mrs. J. Tychson, St. Helena, owner. On the Tychson place, 2 miles northwest of St. Helena on the Calistoga road, a paving-block quarry was opened up in 1911. The rock is a fine-grained, bluish basalt. The spalls and waste will be utilized for crushed rock for road work around St. Helena, under contract awarded by the county supervisors in September, 1913.

Watt Gravel Pit. Miss Margaret Watt, St. Helena, owner. About eight acres of this property at the south end of Main street, St. Helena, is in the creek bed and available for recovery of gravel. The balance is in orchard. Operations were begun in 1908, and the excavations show the gravel bed to be 6 to 10 feet in depth to the clay below. The major portion of the material sold is taken for ballast by the Napa Valley Electric Railway, which has a spur track into the pit. It is also used locally for street and road work. Those taking out the gravel employ their own labor, and pay a certain price per wagon or car load for the gravel removed.

Williams. There is a small quarry on the Williams place north of Calistoga.

Wing Quarry (Newman). H. W. Wing, Napa, owner. The Wing and the Newman quarries, adjoining, on the Berryessa road about 6 miles northeast of Napa, were originally one, owned by Newman & Wing. This quarry was first opened up in 1878. Elevation, 600 feet. The stone is a light, yellowish to gray, trachytic tuff, showing flow structure, so that, at a little distance, in part it resembles bedded sandstone strata. The stone here is of better quality, harder and more compact than the average of the tuff used in Napa County for buildings and bridges. The "Little Trancas" (Milliken Creek, U. S. G. S.) and the "Big Trancas" (Napa River, U. S. G. S.) bridges, north of Napa City were constructed of stone from the Wing quarry, the latter of which was just being finished when visited in September, 1913 (see photos Nos. 35 and 43). This bridge required 75,000 cubic feet of stone, and the average cost was stated to be 27 cents per cubic foot as laid in cement mortar.

Bibl. : R. XIII, p. 640; Bull. 38, p. 158.

Zollner Quarry (formerly Olsen). Estate of J. F. Zollner, owner. It is $2\frac{3}{4}$ miles south of Napa, and has both basalt and a hard gray trachyte, the former of which has been utilized for paving blocks. Idle in 1913.

Bibl. : R. XIII, p. 633; Bull. 38, pp. 158, 320, 342.

Bachelder Quarry, C. S. Bachelder, Napa, owner. It is on the eastern edge of the city, at an elevation of 100 feet (U. S. G. S.), and $\frac{3}{4}$ mile from tidewater. The rock is a reddish rhyolite, in part compact, fine-grained, felsitic, and in portions of the deposit partly altered by devitrification and leaching. The quarry was opened up in 1908. The crushing and screening equipment, driven by gasoline engine, has a capacity for handling 125 tons per nine-hour day. No rock was taken out in 1913. The product is used for road and concrete work.

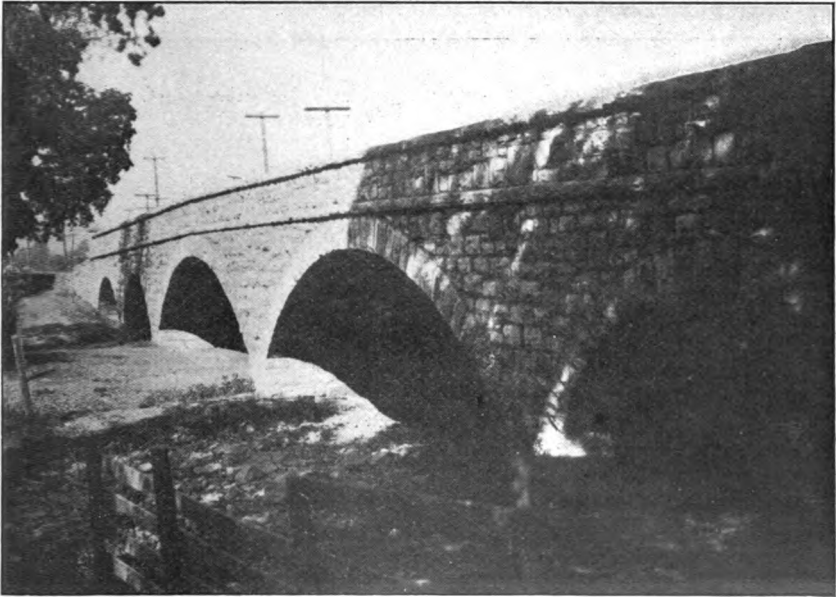


Photo No. 35. "Little Trancas" bridge, near Napa, Napa County. Stone from Wing Quarry, 1908.

Bieber Quarry, P. P. Bieber, St. Helena, owner. It is 1 mile northwest from St. Helena post office and $\frac{1}{4}$ mile from the county road, at an elevation of about 500 feet. The rock is basalt and was first quarried in 1911 under lease, for paving blocks. Not operated in 1913.

Brown Quarry, Mrs. M. Myers, Fairfield, owner. It is 2 miles southeast of Calistoga, and was originally part of the Nettie Brown ranch. The stone is trachytic tuff and has been used locally for building purposes. No production has been made for several years past.

Bibl. : Bull. 38, p. 155.

Buck Ranch. Rock for county road work was quarried from the Buck ranch, southwest of Napa, in 1911.

Carver Quarry (see *Jursch*).