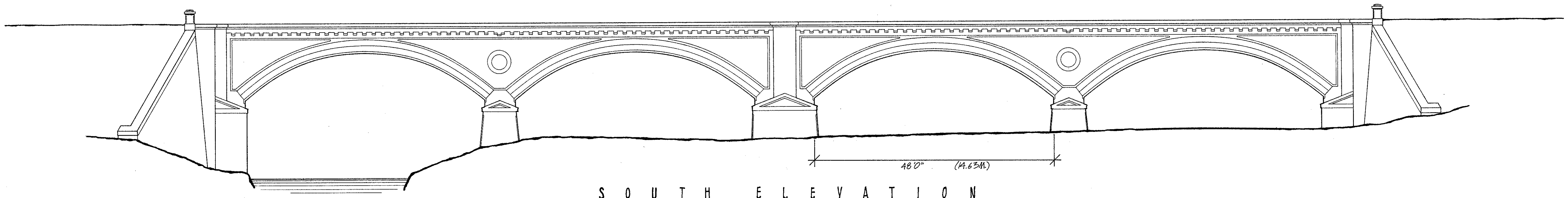
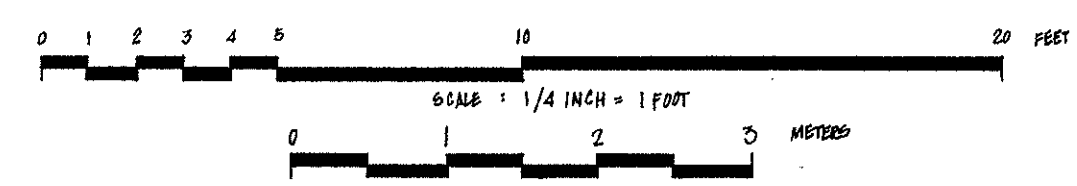
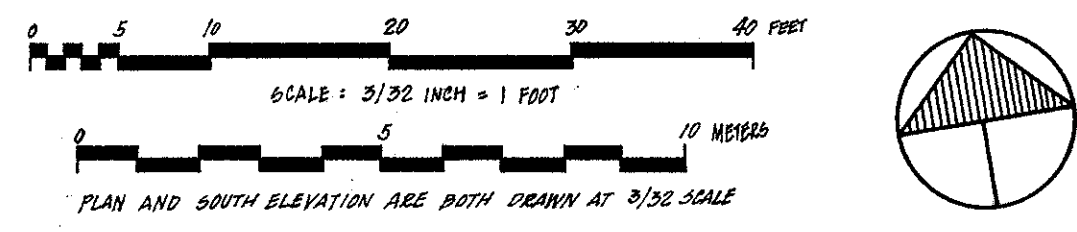


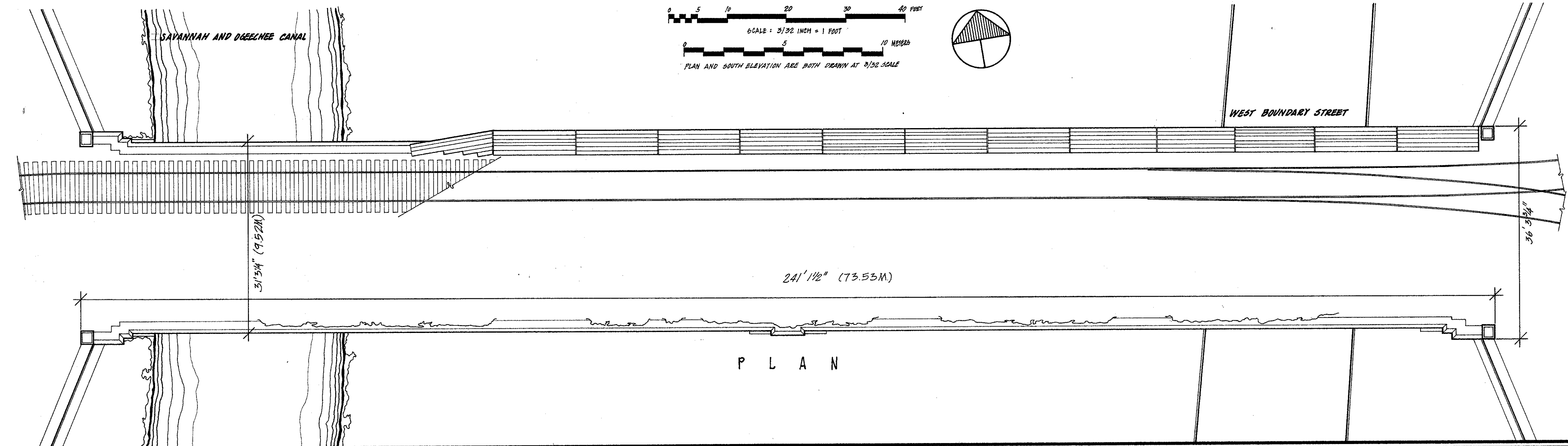
PARTIAL NORTH ELEVATION OF BRICK ARCH VIADUCT (1860)



SOUTH ELEVATION



PLAN AND SOUTH ELEVATION ARE BOTH DRAWN AT 3/32 SCALE



P L A N

DRAWN BY: GREGORY ALZERS, 1975
 OFFICE OF ARCHAEOLOGY AND HISTORIC PRESERVATION
 CENTRAL OF GEORGIA RY - SAVANNAH SHOPS SURVEY
 UNDER DIRECTION OF THE NATIONAL PARK SERVICE,
 UNITED STATES DEPARTMENT OF THE INTERIOR
 SAVANNAH
 NAME AND LOCATION OF STRUCTURE
 CENTRAL OF GEORGIA RAILWAY : 1860 BRICK ARCH VIADUCT
 SPANNING SAVANNAH AND OCEENEE CANAL 400' NORTH OF LOUISVILLE ROAD
 CHATHAM COUNTY
 GEORGIA
 RECORD NO.
 HAER
 GA-4
 HISTORIC AMERICAN
 ENGINEERING RECORD
 SHEET 1 OF 1 SHEETS