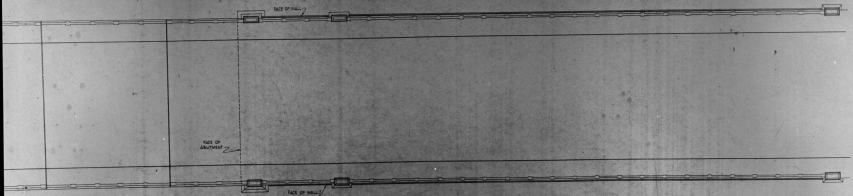


ELEVATION



PLAN

APPROVED
 28 - DAY W APRIL 1928

 BOARD OF COUNTY COMMISSIONERS
 ELKHART COUNTY
 ATTEST _____
 COUNTY CLERK

APPROVED
 28 - DAY W APRIL 1928

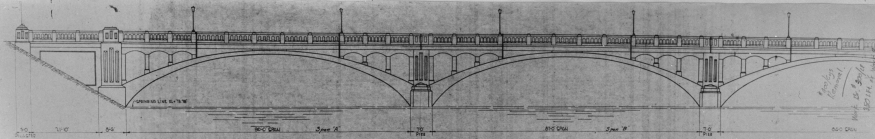
 BOARD OF COUNTY COMMISSIONERS
 ST. JOSEPH COUNTY
 ATTEST _____
 COUNTY CLERK

GENERAL PLAN
 COUNTY LINE BRIDGE
 OVER
 ST. JOSEPH RIVER
 ST. JOSEPH AND ELKHART COUNTIES
 INDIANA
 3 SPANS: 1 - 160' 1 - 87' 1 - 84'
 ROADWAY - 48' ST. BIRDSONG'S
 SCALE - 1/4" = 1' FOOT
 APRIL 25 1928
 WILLIAM S. MOORE - ENGINEER

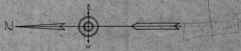
219-20-6085

SHEET NO. 1A

HAER No. IN-69-21

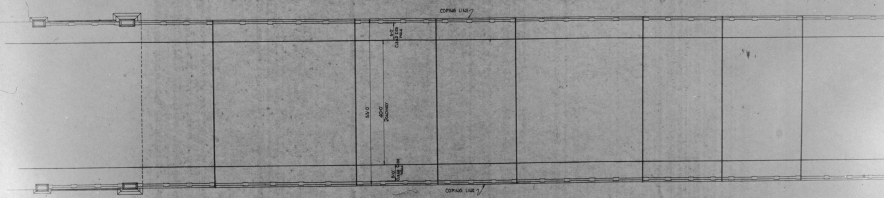


*Approved by
Committee
May 25 1916*



ELEVATION

W.H.H.

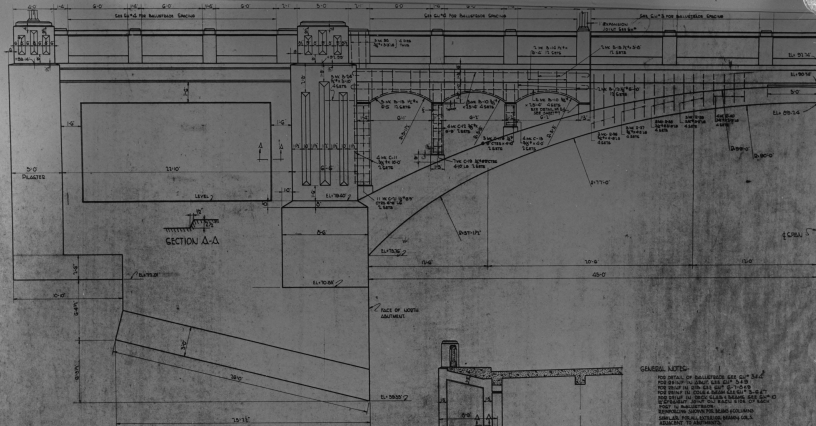


PLAN

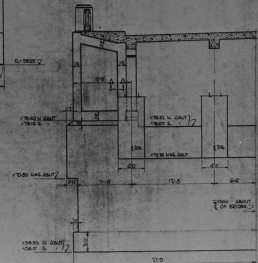
219-20-6055

SHEET 1

HAER No. IN-68-22.



ELEVATION OF NO. 1 ABUTMENT AND HALF
ELEVATION OF 90'-0" SPAN
SCALE 3/8"=1'-0"



HALF FRONT ELEVATION OF NO. 1 ABUTMENT
(NO. 2 ABUTMENT SIMILAR EXCEPT
SEE NOTES)
SCALE 3/8"=1'-0"

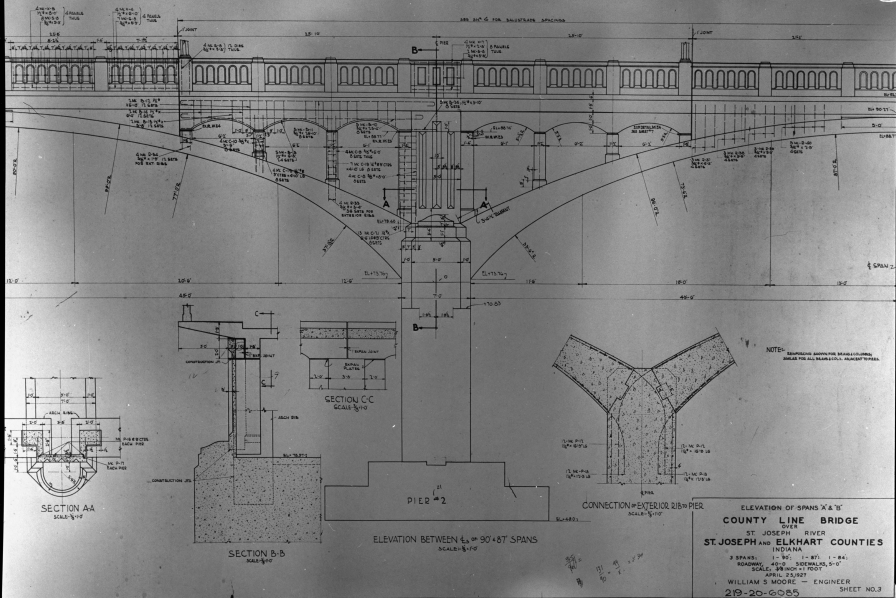
GENERAL NOTES
FOR DETAILS OF DETAILS SEE CUT NO. 1
FOR DETAILS OF CUT NO. 2 SEE CUT NO. 2
FOR DETAILS OF CUT NO. 3 SEE CUT NO. 3
FOR DETAILS OF CUT NO. 4 SEE CUT NO. 4
FOR DETAILS OF CUT NO. 5 SEE CUT NO. 5
FOR DETAILS OF CUT NO. 6 SEE CUT NO. 6
FOR DETAILS OF CUT NO. 7 SEE CUT NO. 7
FOR DETAILS OF CUT NO. 8 SEE CUT NO. 8
FOR DETAILS OF CUT NO. 9 SEE CUT NO. 9
FOR DETAILS OF CUT NO. 10 SEE CUT NO. 10
FOR DETAILS OF CUT NO. 11 SEE CUT NO. 11
FOR DETAILS OF CUT NO. 12 SEE CUT NO. 12
FOR DETAILS OF CUT NO. 13 SEE CUT NO. 13
FOR DETAILS OF CUT NO. 14 SEE CUT NO. 14
FOR DETAILS OF CUT NO. 15 SEE CUT NO. 15
FOR DETAILS OF CUT NO. 16 SEE CUT NO. 16
FOR DETAILS OF CUT NO. 17 SEE CUT NO. 17
FOR DETAILS OF CUT NO. 18 SEE CUT NO. 18
FOR DETAILS OF CUT NO. 19 SEE CUT NO. 19
FOR DETAILS OF CUT NO. 20 SEE CUT NO. 20
FOR DETAILS OF CUT NO. 21 SEE CUT NO. 21
FOR DETAILS OF CUT NO. 22 SEE CUT NO. 22
FOR DETAILS OF CUT NO. 23 SEE CUT NO. 23
FOR DETAILS OF CUT NO. 24 SEE CUT NO. 24
FOR DETAILS OF CUT NO. 25 SEE CUT NO. 25
FOR DETAILS OF CUT NO. 26 SEE CUT NO. 26
FOR DETAILS OF CUT NO. 27 SEE CUT NO. 27
FOR DETAILS OF CUT NO. 28 SEE CUT NO. 28
FOR DETAILS OF CUT NO. 29 SEE CUT NO. 29
FOR DETAILS OF CUT NO. 30 SEE CUT NO. 30
FOR DETAILS OF CUT NO. 31 SEE CUT NO. 31
FOR DETAILS OF CUT NO. 32 SEE CUT NO. 32
FOR DETAILS OF CUT NO. 33 SEE CUT NO. 33
FOR DETAILS OF CUT NO. 34 SEE CUT NO. 34
FOR DETAILS OF CUT NO. 35 SEE CUT NO. 35
FOR DETAILS OF CUT NO. 36 SEE CUT NO. 36
FOR DETAILS OF CUT NO. 37 SEE CUT NO. 37
FOR DETAILS OF CUT NO. 38 SEE CUT NO. 38
FOR DETAILS OF CUT NO. 39 SEE CUT NO. 39
FOR DETAILS OF CUT NO. 40 SEE CUT NO. 40
FOR DETAILS OF CUT NO. 41 SEE CUT NO. 41
FOR DETAILS OF CUT NO. 42 SEE CUT NO. 42
FOR DETAILS OF CUT NO. 43 SEE CUT NO. 43
FOR DETAILS OF CUT NO. 44 SEE CUT NO. 44
FOR DETAILS OF CUT NO. 45 SEE CUT NO. 45
FOR DETAILS OF CUT NO. 46 SEE CUT NO. 46
FOR DETAILS OF CUT NO. 47 SEE CUT NO. 47
FOR DETAILS OF CUT NO. 48 SEE CUT NO. 48
FOR DETAILS OF CUT NO. 49 SEE CUT NO. 49
FOR DETAILS OF CUT NO. 50 SEE CUT NO. 50
FOR DETAILS OF CUT NO. 51 SEE CUT NO. 51
FOR DETAILS OF CUT NO. 52 SEE CUT NO. 52
FOR DETAILS OF CUT NO. 53 SEE CUT NO. 53
FOR DETAILS OF CUT NO. 54 SEE CUT NO. 54
FOR DETAILS OF CUT NO. 55 SEE CUT NO. 55
FOR DETAILS OF CUT NO. 56 SEE CUT NO. 56
FOR DETAILS OF CUT NO. 57 SEE CUT NO. 57
FOR DETAILS OF CUT NO. 58 SEE CUT NO. 58
FOR DETAILS OF CUT NO. 59 SEE CUT NO. 59
FOR DETAILS OF CUT NO. 60 SEE CUT NO. 60
FOR DETAILS OF CUT NO. 61 SEE CUT NO. 61
FOR DETAILS OF CUT NO. 62 SEE CUT NO. 62
FOR DETAILS OF CUT NO. 63 SEE CUT NO. 63
FOR DETAILS OF CUT NO. 64 SEE CUT NO. 64
FOR DETAILS OF CUT NO. 65 SEE CUT NO. 65
FOR DETAILS OF CUT NO. 66 SEE CUT NO. 66
FOR DETAILS OF CUT NO. 67 SEE CUT NO. 67
FOR DETAILS OF CUT NO. 68 SEE CUT NO. 68
FOR DETAILS OF CUT NO. 69 SEE CUT NO. 69
FOR DETAILS OF CUT NO. 70 SEE CUT NO. 70
FOR DETAILS OF CUT NO. 71 SEE CUT NO. 71
FOR DETAILS OF CUT NO. 72 SEE CUT NO. 72
FOR DETAILS OF CUT NO. 73 SEE CUT NO. 73
FOR DETAILS OF CUT NO. 74 SEE CUT NO. 74
FOR DETAILS OF CUT NO. 75 SEE CUT NO. 75
FOR DETAILS OF CUT NO. 76 SEE CUT NO. 76
FOR DETAILS OF CUT NO. 77 SEE CUT NO. 77
FOR DETAILS OF CUT NO. 78 SEE CUT NO. 78
FOR DETAILS OF CUT NO. 79 SEE CUT NO. 79
FOR DETAILS OF CUT NO. 80 SEE CUT NO. 80
FOR DETAILS OF CUT NO. 81 SEE CUT NO. 81
FOR DETAILS OF CUT NO. 82 SEE CUT NO. 82
FOR DETAILS OF CUT NO. 83 SEE CUT NO. 83
FOR DETAILS OF CUT NO. 84 SEE CUT NO. 84
FOR DETAILS OF CUT NO. 85 SEE CUT NO. 85
FOR DETAILS OF CUT NO. 86 SEE CUT NO. 86
FOR DETAILS OF CUT NO. 87 SEE CUT NO. 87
FOR DETAILS OF CUT NO. 88 SEE CUT NO. 88
FOR DETAILS OF CUT NO. 89 SEE CUT NO. 89
FOR DETAILS OF CUT NO. 90 SEE CUT NO. 90
FOR DETAILS OF CUT NO. 91 SEE CUT NO. 91
FOR DETAILS OF CUT NO. 92 SEE CUT NO. 92
FOR DETAILS OF CUT NO. 93 SEE CUT NO. 93
FOR DETAILS OF CUT NO. 94 SEE CUT NO. 94
FOR DETAILS OF CUT NO. 95 SEE CUT NO. 95
FOR DETAILS OF CUT NO. 96 SEE CUT NO. 96
FOR DETAILS OF CUT NO. 97 SEE CUT NO. 97
FOR DETAILS OF CUT NO. 98 SEE CUT NO. 98
FOR DETAILS OF CUT NO. 99 SEE CUT NO. 99
FOR DETAILS OF CUT NO. 100 SEE CUT NO. 100

ELEVATIONS
ABUTMENT NO. 1 & HALF SPAN
COUNTY LINE BRIDGE
OVER
BY JOSEPH R. OBER
ST. JOSEPH AND ELKHART COUNTIES
INDIANA
3 SPANS 15'-0" x 11'-0" x 10'-0"
ROADWAY 40'-0" BROADWAY 15'-0"
SCALE 3/8"=1'-0"
APRIL 25, 1929
WILLIAM B. HODGINS ENGINEER

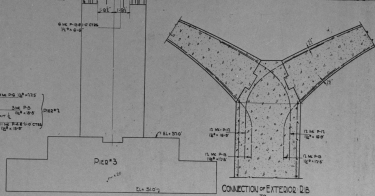
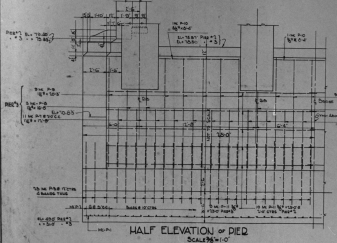
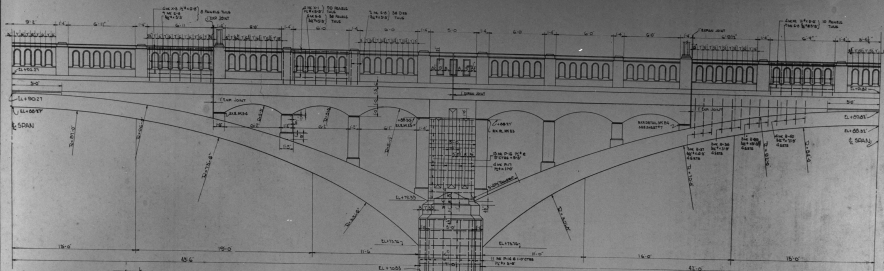
219-20-6085

SHEET NO. 2

HAER. No. IN-66-23



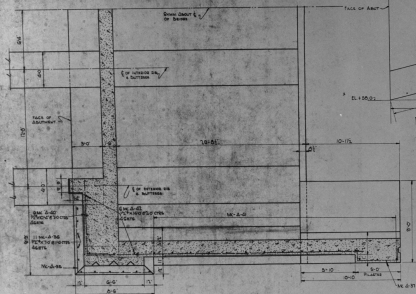
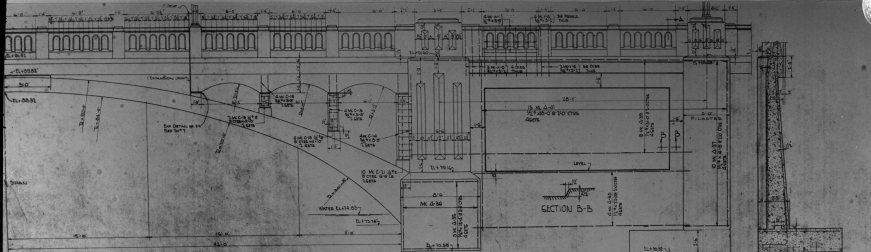
WATER NO. IN-68-24



GENERAL NOTES
 FOR DETAIL OF REINFORCED STEEL
 SEE SHEET R-3
 FOR DETAIL OF MAINTENANCE
 SEE SHEET P-3

HALF-ELEVATIONS SPANS 1/2" AND 1/4"
COUNTY LINE BRIDGE
 OVER
 RIVER
 ST. JOSEPH AND ELKHART COUNTIES
 INDIANA
 3 SPANS, 1-80' 1-ST. 1-84'
 ROADWAY 40'-0" SIDEWALKS 8'-0"
 SCALE 3/8"=1'-0"
 APRIL 25/1929
 WILLIAM S. MOORE ENGINEER
 219-20-6085 SHEET NO. 4

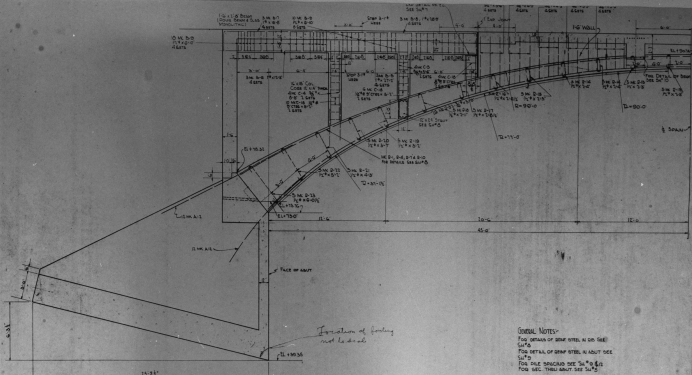
HAER No. IN-168-25



HORIZONTAL SECTION THROUGH No. 4-1 ABUTMENT
(NO. 1 ABUTMENT SIMILAR)
SCALE-3/8"=1'-0"

ELEVATION HALF SPAN No. 3'S ABUTMENT NO. 4
 CROSS-SECTION ABUTMENT NO. 4
COUNTY LINE BRIDGE
 OVER
 ST. JOSEPH RIVER
ST. JOSEPH AND ELKHART COUNTIES
 INDIANA
 3 SPANS 1'-80' 1'-87' 1'-94'
 ROADWAY 4'-6" OVERALLS 8'-0"
 BUILT BY
 APRIL 25 1928
 WILLIAM B. MOORE ENGINEER
 219-20-6085 SHEET NO. 3

PLATE NO. IN-18-26

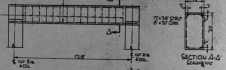
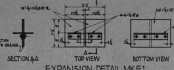
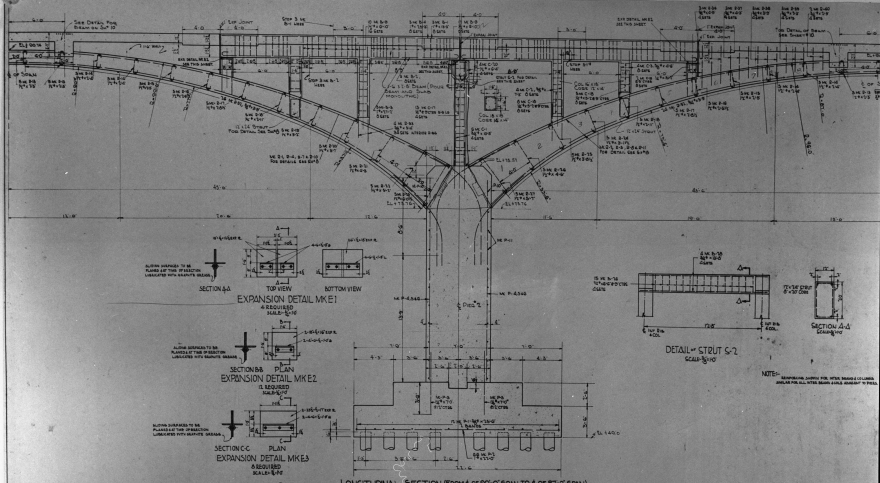


LONGITUDINAL SECTION N# 1 ABUTMENT 6 1/2 OF 90'0" SPAN

GENERAL NOTES:
 FOR DETAILS OF BRIDGE SEE A.D. OR SEE
 C.A.D.
 FOR DETAILS OF BRIDGE SEE A.D. OR SEE
 C.A.D.
 FOR DETAILS OF BRIDGE SEE A.D. OR SEE
 C.A.D.

HALF-ELEVATION SPAN 'A'
 COUNTY LINE BRIDGE
 OVER
 ST. JOSEPH RIVER
 ST. JOSEPH AND ELKHART COUNTIES
 INDIANA
 3 SPANS 1-85' 1-87' 1-84'
 BRIDGE 45' OVERALL 4' 0"
 SCALE: FINISH = 1" = 10'
 APRIL 21 1905
 WILLIAM S. MOORE - ENGINEER
 219-20-6085 SHEET NO. 6

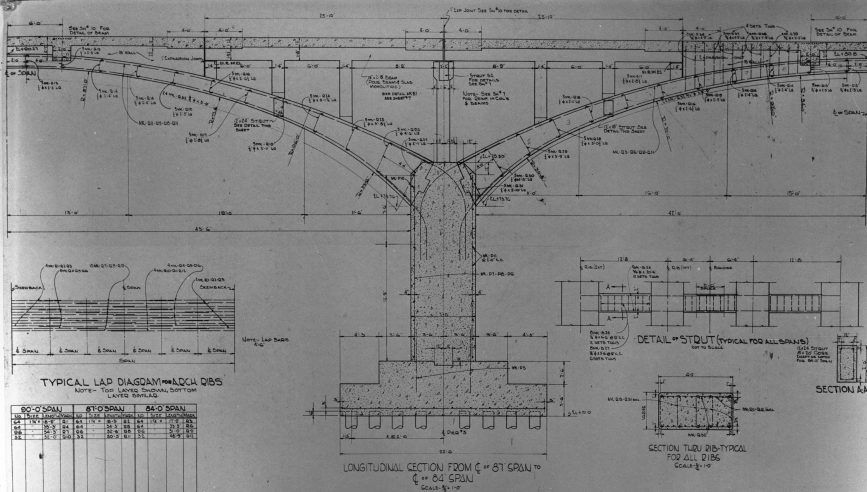
HARRIS N. IN - 68-21



LONGITUDINAL SECTION (FROM 6 OF 80'-0\"/>

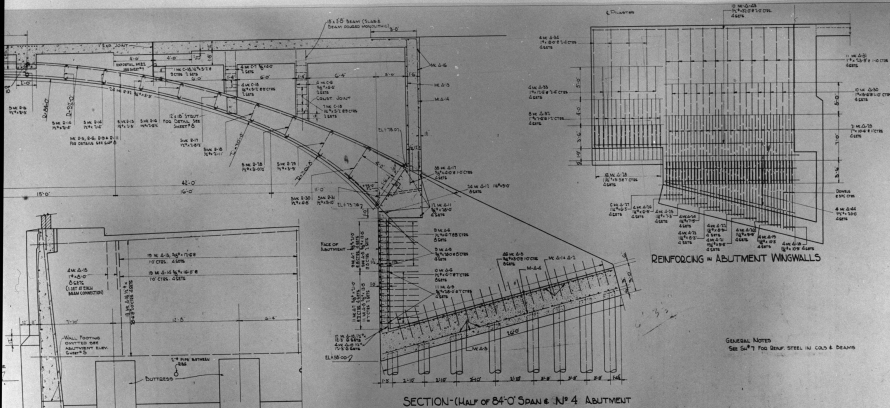
HALF-SECTIONS SPANS "A" AND "B"
COUNTY LINE BRIDGE
 ST. JOSEPH AND ELKHART COUNTIES
 INDIANA
 3 SPANS 1-80', 1-87', 1-84'
 ROADWAY 48'-0" WIDE ALIAS 8'-0"
 SCALE AS SHOWN
 APRIL 28, 1928
 WILLIAM B. MOORE ENGINEER
 219-20-6065 SHEET NO. 7

PAPER No. IN-66-22



HALF SECTION BRIDGE AND
COUNTY LINE BRIDGE
 OVER
 ST. JOSEPH RIVER
ST. JOSEPH ELKHART COUNTIES
 INDIANA
 3 RAILS 1'-0" 1'-0" 1'-0"
 ROADWAY 45'-0" SIDEWALKS 5'-0"
 SCALE AS SHOWN
 APRIL 23 1925
 WILLIAM S. MOORE, ENGINEER
 219-20-6085 SHEET NO. 6

HAER No. N. 66-724



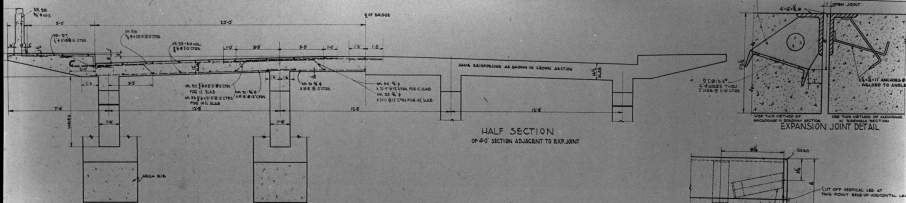
SECTION - (HALF OF 84'-0" SPAN & NO. 4 ABUTMENT

GENERAL NOTES
 SEE SETS FOR BENT STEEL IN COLS & DEAMS

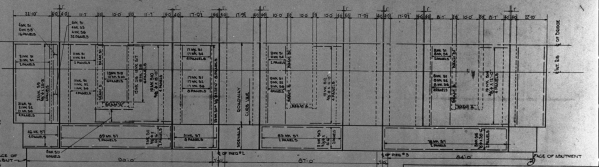
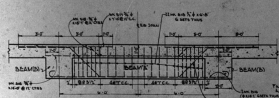
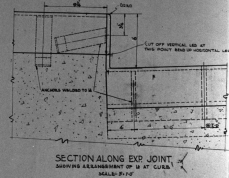
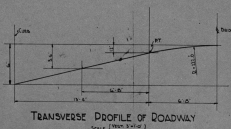
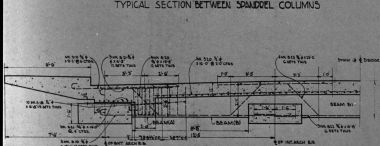
HALF READ ELEVATION OF ABUTMENT

HALF SECTION OF SPAN NO. 4
 AND ABUTMENT NO. 4
 COUNTY LINE BRIDGE
 OVER
 ST. JOSEPH RIVER
 ST. JOSEPH AND ELKHART COUNTIES
 INDIANA
 3 SPANS: 1 - 85' 1 - 87' 1 - 84'
 ROADWAY: 45'-0" SIDEWALK: 6'-0"
 SCALE: BRIDGE - 1" = 10'
 APRIL 23, 1929
 WILLIAM S. MOORE - ENGINEER
 219-20-6085 SHEET NO. 9

HAER NO. IN-68-30



TYPICAL SECTION BETWEEN SPANDEL COLUMNS



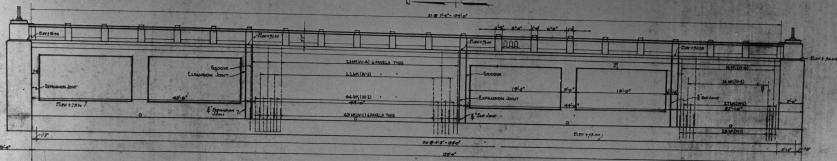
NOTE: SPECIAL SLAB SECTION APPLIES BETWEEN REINBAR. IN ONLY EXPANSION JOINT SUPPORTED AS SHOWN IN SECTION BETWEEN SPANDEL COLUMNS.

TYPICAL CROSS-SECTIONS
COUNTY LINE BRIDGE
 OVER
 ST JOSEPH RIVER
ST. JOSEPH AND ELKHART COUNTIES
 INDIANA

3 SPANS: 1-50', 1-87', 1-84'
 ROADWAY: 48'-0" - 50' CIRCULAR 9'-0"
 SCALE: 3/4" = 1'-0" EXCEPT AS SHOWN
 APRIL 25, 1929

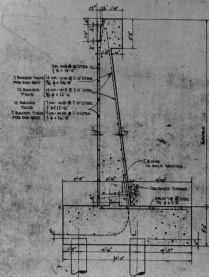
WILLIAM S. MOORE - ENGINEER
 219-20-6085 SHEET NO. 10

HAER N. 1-163-3

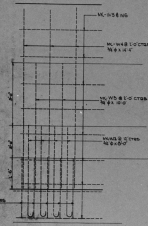


ELEVATION WEST APPROACH WALL

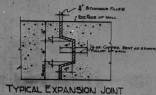
(See Note on Drawing)
Scale 1/4" = 1'-0"



TYPICAL WALL SECTION
Scale 1/4" = 1'-0"



TYPICAL WALL REINFORCING
Scale 1/4" = 1'-0"



TYPICAL EXPANSION JOINT

When Rebars, expandable to wall joint
before concrete is poured, the
of joints is to be of 1/2
and placed in the joints.

SOUTH APPROACH WALLS
COUNTY LINE BRIDGE
OVER
ST. JOSEPH RIVER
ST. JOSEPH AND ELKHART COUNTIES
INDIANA.

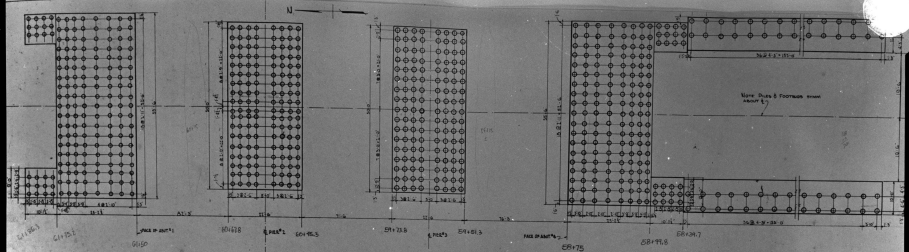
3 SPANS 11'-0" 11'-0" 11'-0"
ROADWAY 48'-0" SIDEWALKS 8'-0"
SCALE AS SHOWN

APRIL 23, 1929

WILLIAM S. MOORE - ENGINEER

219-20-6085

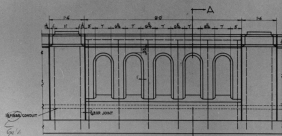
SHEET NO. 11



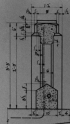
HAER No. 17-6-33

See
 3-16-6985

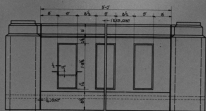
PILING PLAN
 COUNTY LINE BRIDGE
 ST. JOSEPH RIVER
 ST. JOSEPH AND ELKHART COUNTIES
 INDIANA
 3 SPANS: 1-87; 1-87; 1-84;
 ROADWAY 42'-0" SIDEWALK 4'-0"
 SCALE: AS SHOWN / FOOT
 APRIL 24, 1929
 WILLIAM S. MOORE - ENGINEER
 219-20-6085 SHEET NO. 3



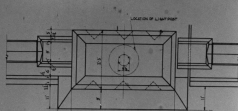
ELEVATION OF G.O. SECTION OF BALUSTRADE
(SEE GENERAL PLANNING FOR NUMBER AND SPACING OF BALUSTRADES IN OTHER PILLARS.)



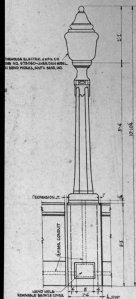
SECTION AA



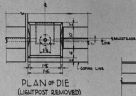
ELEVATION OF BALUSTRADE OVER PIER



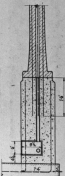
PLAN



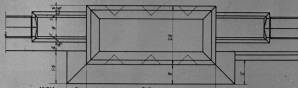
ELEVATION
DETAILS OF LIGHTPOST DIES



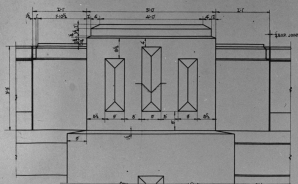
PLAN OF DIE
(LIGHTPOST REMOVED)



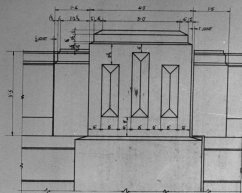
SECTION BB OF DIE



PLAN



ELEVATION OF DIES AT ABUTMENT



ELEVATION OF DIE OVER PILASTER
ON APPROACH WALLS

(SHOW THE USE OF DASHES AND DIMENSIONS ON APPROACH WALLS.)

DETAIL OF
BALUSTRADE AND LIGHT POSTS
COUNTY LINE BRIDGE
OVER
ST. JOSEPH RIVER
ST. JOSEPH AND ELKHART COUNTIES
INDIANA

3 SPANS 1-85' 1-87' 1-84'
ROADWAY 47' 2" OVERALL 8' 2"

SCALE: 1/8" = 1' 0"

APRIL 23, 1899

WILLIAM S. MOORE - ENGINEER

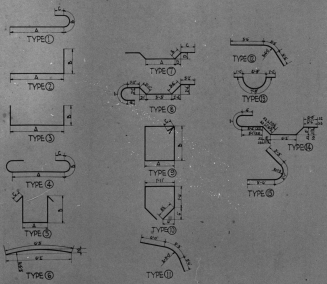
219-20-6085

SHEET NO. 13

SUPPORTS - STEEL				PIERS & ABUTMENTS - STEEL				SPANNELS - STEEL				SUBSTITUTIONS - STEEL				PIERS				SPAN				APPROACH WALLS				RETAINING WALLS							
NO.	DESCRIPTION	QUANTITY	UNIT	NO.	DESCRIPTION	QUANTITY	UNIT	NO.	DESCRIPTION	QUANTITY	UNIT	NO.	DESCRIPTION	QUANTITY	UNIT	NO.	DESCRIPTION	QUANTITY	UNIT	NO.	DESCRIPTION	QUANTITY	UNIT	NO.	DESCRIPTION	QUANTITY	UNIT	NO.	DESCRIPTION	QUANTITY	UNIT	NO.	DESCRIPTION	QUANTITY	UNIT
1	1	1	1	1	1	1	1	1

STEEL BEAMS											
NO.	DESCRIPTION	QUANTITY	UNIT	NO.	DESCRIPTION	QUANTITY	UNIT	NO.	DESCRIPTION	QUANTITY	UNIT
1	1	1

STEEL BOLTS											
NO.	DESCRIPTION	QUANTITY	UNIT	NO.	DESCRIPTION	QUANTITY	UNIT	NO.	DESCRIPTION	QUANTITY	UNIT
1	1	1



BILL OF MATERIALS
COUNTY LINE BRIDGE
 OVER
 ST. JOSEPH & ELKHART RIVER
 INDIANA
 SPANNS 7-80' - 875' 0" - 800' 0"
 ROADWAY 40'-0" SIDEWAYS 8'-0"
 SCALE 1/4" = 1'-0"
 APRIL 21, 1928
 WILLIAM S. MOORE - ENGINEER
 219-20-6085 SHEET NO. 14

HAER No. IN-68-35