

United States Department of the Interior
National Park Service

National Register of Historic Places
Registration Form



Final
1523

This form is for use in nominating or requesting determinations for individual properties and districts. See instructions in How to Complete the National Register of Historic Places Registration Form (National Register Bulletin 16A). Complete each item by marking "x" in the appropriate box or by entering the information requested. If an item does not apply to the property being documented, enter "N/A" for "not applicable." For functions, architectural classification, materials, and areas of significance, enter only categories and subcategories from the instructions. Place additional entries and narrative items on continuation sheets (NPS Form 10-900a). Use a typewriter, word processor, or computer, to complete all items.

1. Name of Property

historic name Ohio Street Bridge
other names/site number Joan Marchand Overlook 163-196-53383

2. Location

street & number Ohio Street over Pigeon Creek N/A not for publication
city or town Evansville N/A vicinity
state Indiana code IN county Vanderburgh code 163 zip code _____

3. State/Federal Agency Certification

As the designated authority under the National Historic Preservation Act, as amended, I hereby certify that this nomination request for determination of eligibility meets the documentation standards for registering properties in the National Register of Historic Places and meets the procedural and professional requirements set forth in 36CFR Part 60. In my opinion, the property meets does not meet the National Register criteria. I recommend that this property be considered significant nationally statewide locally. (See continuation sheet for additional comments.)

[Signature] 10/27/98
Signature of certifying official/Title Date
Indiana Department of Natural Resources
State or Federal agency and bureau

In my opinion, the property meets does not meet the National Register criteria. (See continuation sheet for additional comments.)

Signature of certifying official/Title Date

State or Federal agency and bureau

4. National Park Service Certification

- I hereby certify that the property is:
 entered in the National Register.
 See continuation sheet.
- determined eligible for the National Register
 See continuation sheet.
- determined not eligible for the National Register
- removed from the National Register
- other, (explain:)

[Signature] 12-17-98
Signature of the Keeper Date of Action

Ohio Street Bridge

Vanderburgh IN

Name of Property

County and State

5. Classification

Ownership of Property

(Check as many boxes as apply)

- private
- public-local
- public-State
- public-Federal

Category of Property

(Check only one box)

- building
- district
- site
- structure
- object

Number of Resources within Property

(Do not include previously listed resources in the count)

Contributing	Noncontributing	
0	0	buildings
0	0	sites
1	0	structures
0	0	objects
1	0	Total

Name of related multiple property listing

(Enter "N/A" if property is not part of a multiple property listing.)

N/A

Number of contributing resources previously listed in the National Register

0

6. Function or Use

Historic Functions

(Enter categories from instructions)

TRANSPORTATION: Road-Related (vehicular)

Current Functions

(Enter categories from instructions)

VACANT

Not in use

7. Description

Architectural Classification

(Enter categories from instructions)

OTHER: Pratt through truss

Materials

(Enter categories from instructions)

foundation

STONE

walls

roof

other

IRON

Narrative Description

(Describe the historic and current condition of the property on one or more continuation sheets.)

The Ohio Street Bridge (Vanderburgh County Bridge Cy3), completed in 1891, is located in Evansville, Vanderburgh County, Indiana. The bridge formerly carried Ohio Street across Pigeon Creek at the point where the creek flows into the Ohio River (photo 1). A replacement bridge was constructed 300 feet upstream in 1996. The historic bridge remains in its original location but is closed to traffic. Immediately adjacent to the bridge to the north is the Louisville and Nashville Railroad Bridge, a Parker through truss built in 1908 by the American Bridge Company (53384).

The Ohio Street Bridge is a single-span, pin-connected, Pratt through truss. The bridge is constructed of steel, with some cast iron elements. It is seated on cut sandstone abutments and wing walls (photos 1, 6). The bridge has a span of 198 feet, a roadway of 24 feet, a vertical clearance of 21 feet and an underclearance of 29 feet. The top chord members and the portal frame diagonal members are compression members and are fabricated of plate and angles riveted together to form rectangular box sections. The top chords are two feet deep and one foot, 10 inches wide (photos 2, 3, 4).

Each truss has eleven 18-foot panels (photo 4). Each of the vertical members that define these panels is fabricated of two structural channels tied together with lattice bars on the flanges. A horizontal strut intersects at the mid-height of the vertical members of each truss. The diagonal tension members in the second, third, ninth, and tenth panels are steel eye bars. The diagonal members in the fourth, fifth, sixth, seventh and eighth panels are round steel rods with eye sockets at each end.

The bottom chord member of the truss are two steel eye bars that are attached to the steel pins at the ends of the floor beams (photo 6). The floor beams are 30-inch deep "I" beams. Eleven floor stringers span 18 feet from floor beam to floor beam and support the steel, open grate deck. The stringers were replaced in 1977. The deck was installed in 1963. The horizontal bracing in the plane of the bottom chord is steel rod "X" bracing. The top chord is strutted at each panel point with an "X" latticed strut. There is horizontal rod "X" bracing in the top chord plane.

There were originally two metal panels each on the portal struts (photos 2, 3). The left panel had the names of the county commissioners in office when the bridge was contracted. The right panel had "PITTSBURGH BRIDGE CO. 1891." The right panels are extant on both portal frames. The left panels have been removed.

The bridge carries a city water line on the south truss, a sewage sludge line on the north truss, and a four-foot, grated, pedestrian walkway on each side. The north walkway (photo 5) has a lattice railing and decorative, cast-iron newel posts. The walkway on the south side (photo 1) is missing its railing. Otherwise, the structure has good integrity and retains most of its original members.

Ohio Street Bridge
Name of Property

Vanderburgh IN
County and State

8. Statement of Significance

Applicable National Register Criteria

(Mark "x" in one or more boxes for the criteria qualifying the property for National Register listing.)

- A** Property is associated with events that have made a significant contribution to the broad patterns of our history.
- B** Property is associated with the lives of persons significant in our past.
- C** Property embodies the distinctive characteristics of a type, period, or method of construction or represents the work of a master, or possesses high artistic values, or represents a significant and distinguishable entity whose components lack individual distinction.
- D** Property has yielded, or is likely to yield, information important in prehistory or history.

Criteria Considerations

(Mark "x" in all the boxes that apply.)

Property is:

- A** owned by a religious institution or used for religious purposes.
- B** removed from its original location.
- C** a birthplace or grave.
- D** a cemetery.
- E** a reconstructed building, object, or structure.
- F** a commemorative property.
- G** less than 50 years of age or achieved significance within the past 50 years.

Narrative Statement of Significance

(Explain the significance of the property on one or more continuation sheets.)

9. Major Bibliographic References

Bibliography

(Cite the books, articles, and other sources used in preparing this form on one or more continuation sheets.)

Previous documentation on file (NPS):

- preliminary determination of individual listing (36 CFR 67) has been requested
- previously listed in the National Register
- previously determined eligible by the National Register
- designated a National Historic Landmark
- recorded by Historic American Buildings Survey # _____
- recorded by Historic American Engineering Record # _____

Areas of Significance

(Enter categories from instructions)

ENGINEERING

TRANSPORTATION

Period of Significance

1891-1948

Significant Dates

1891

Significant Person

(Complete if Criterion B is marked above)

N/A

Cultural Affiliation

N/A

Architect/Builder

Pittsburgh Bridge Company

Eigenmann & Hollerbach

Primary location of additional data:

- State Historic Preservation Office
- Other State agency
- Federal agency
- Local government
- University
- Other

Name of repository:

Ohio Street Bridge
Name of Property

Vanderburgh IN
County and State

10. Geographical Data

Acreage of Property <1

UTM References

(Place additional UTM references on a continuation sheet.)

1	16	448380	4203120	3			
	Zone	Easting	Northing		Zone	Easting	Northing
2				4			

See continuation sheet

Verbal Boundary Description

(Describe the boundaries of the property on a continuation sheet.)

Boundary Justification

(Explain why the boundaries were selected on a continuation sheet.)

11. Form Prepared By

name/title Laura Thayer, Historic Preservation Consultant, for
organization Evansville Department of Parks and Recreation date 9-5-97
street & number 3905 N. 500 W. telephone 812/375-2318
city or town Columbus state IN zip code 47201

Additional Documentation

Submit the following items with the completed form:

Continuation Sheets

Maps

A **USGS map** (7.5 or 15 minute series) indicating the property's location.

A **Sketch map** for historic districts and properties having large acreage or numerous resources.

Photographs

Representative **black and white** photographs of the property.

Additional items

(Check with the SHPO or FPO for any additional items)

Property Owner

(Complete this item at the request of SHPO or FPO.)

name James A. Hadden, Executive Director, Evansville Department of Parks and Recreation
street & number 100 E. Walnut Street, Lower Level telephone 812/424-6921
city or town Evansville state IN zip code 47713

Paperwork Reduction Act Statement: This information is being collected for applications to the National Register of Historic Places to nominate properties for listing or determine eligibility for listing, to list properties and to amend existing listings. Response to this request is required to obtain a benefit in accordance with the National Historic Preservation Act, as amended (16 U.S.C. 470 *et seq.*).

Estimated Burden Statement: Public reporting burden for this form is estimated to average 18.1 hours per response including time for reviewing instructions, gathering and maintaining data, and completing and reviewing the form. Direct comments regarding this burden estimate or any aspect of this form to the Chief, Administrative Services Division, National Park Service, P.O. Box 37127, Washington, DC 20013-7127; and the Office of Management and Budget, Paperwork Reductions Projects (1024-0018), Washington, DC 20503.

The Ohio Street Bridge is significant under Criterion C, in the area of Engineering; and under Criterion A, in the area of Transportation. The bridge is the longest single-span Pratt through truss in the state, and the oldest of a small number of extant historic iron bridges in Vanderburgh County. From the time of its construction until it was closed last year, it was an important link between the west and east sides of Evansville, which are separated by Pigeon Creek. The Ohio Street Bridge was rated "outstanding" by the Indiana Historic Sites and Structures Inventory, conducted in Vanderburgh County in 1994. The statewide historic metal bridge survey, published in 1987, placed the structure in the Historic Bridge Pool.

History

A ferry, kept by Mrs. Nellie Sweezer, was established at the mouth of Pigeon Creek in 1820. The first bridge was a wooden bridge completed in 1841. The 1841 bridge was replaced by a new wooden bridge in 1850.

In the ensuing years, Evansville became an important shipping and warehousing center as the city's transportation capabilities increased. An Ohio River port since its founding, it attracted several railroad lines starting in the 1850s, and became the terminus for the Wabash and Erie Canal in 1853. By 1870, with a population of 21,830, it had become the second largest city in the state (after Indianapolis), and was known for the manufacture and/or shipping of wholesale drugs, tobacco, hogs, coal, and a myriad of other products.

Additional bridges across Pigeon Creek were completed as the city expanded to the north. Wooden bridges were completed on Franklin Street in 1860 and on Maryland Street in 1870. The three bridges that handled the city's vehicular traffic across the creek were positioned about six blocks apart. In an 1888 bird's eye view, the three are shown as covered wooden bridges. In the same drawing, two iron truss railroad bridges cross Pigeon Creek, illustrating that the railroad companies were ahead of local governments in building iron bridges.

By 1890, the population of Evansville had reached 50,756, more than double the figure recorded for 1870. With such rapid growth, the need for reliable roads and bridges was great. Wooden bridges were frequently in need of repair. In the City Council meetings of 1889, the findings of a bridge inspection committee were recorded. The following excerpt reveals the condition of the old wooden bridge on Ohio Street:

“. . . we have visited the bridge in company with the city surveyor and made an examination of it. We find that the bridge is in a very bad condition. The trestles are

badly out of line and out of plumb. The lower cords are in a very bad condition and have been spliced in many places. The East abutment is badly cracked and settled. One of the piers was washed out several years since and replaced with a wooden [?]. We find that the City Council condemned the bridge about three years since, it being very unsafe, but it was repaired by the City at considerable expense as the Commissioners would not erect a new bridge on account of a controversy in regard to the location, etc.”¹

The Commissioners now had to concede that a new bridge was necessary. Within the next few months, specifications were prepared by the city surveyor, August Pfafflin (1857-1935). Pfafflin was a local civil engineer who served a number of times during his career as city and county surveyor.

An Evansville company, Eigenmann & Hollerbach, was selected to build the stone abutments for the bridge. John G. Eigenmann (1837-1907) was the senior partner of the firm, which built bridges, locks, dams, and dikes all along the Ohio River, as well as many of the brick streets of Evansville. Eigenmann & Hollerbach’s bid for the work was \$30,000.

A large number of companies bid on the structure specified to replace the 1850 bridge. Among them are firms which are familiar names in the history of iron bridge building in Indiana: the King Iron Bridge and Manufacturing Company, the Massillon Bridge Company, and the Wrought Iron Bridge Company. The firm that was awarded the contract, however, was the Pittsburgh Bridge Company, a prolific bridge builder, but not in Indiana, where only a few Pittsburgh bridges were erected.

The present Ohio Street Bridge was completed in 1891. It was in continuous use until 1996. The City currently has plans to rehabilitate the structure and convert it for use as a pedestrian bridge in the proposed Pigeon Creek Greenway Passage. Storyboards illustrating the history and significance of the bridge will be placed in the vicinity. The structure will be named the Joan Marchand Overlook in memory of Ms. Marchand, who made a significant contribution to historic preservation in Evansville.

Transportation Significance

The iron bridge was an important component of transportation improvements on Indiana railroads and highways in the late nineteenth century. Most of the early bridges had been wood. Wooden bridges became inadequate for the longer, faster trains in the late

¹ Report of the Committee on Sewers and Bridges, Minutes of the City Council, Evansville, Indiana, 16 September 1889.

nineteenth century era of railroad expansion. The railroad companies laid the groundwork for the age of the iron bridge, hiring the engineers who designed the trusses, and providing business for the many companies that would be established to fabricate the spans. By 1870, the railroads were building iron bridges to the exclusion of stone or wood bridges.

County commissioners were slower to move from wood to iron. Because of a propensity for elected officials to economize, bridges often took long periods of time to be approved and built on roads under their jurisdictions. Good roads with adequate bridges, however, became a public concern as commerce and industry grew in the late nineteenth century. By the late 1880s, iron bridges were beginning to be preferred over wooden bridges. Between about 1890 and about 1905, nearly all highway bridges were constructed of metal.

Evansville was the second largest city in Indiana at the time the Ohio Street Bridge was constructed, in 1891. The bridge was an important crossing that connected the city's east and west sides. Located at the mouth of Pigeon Creek, it served commerce along the Ohio River, where a large number of industries and warehouses were located. The bridge was important both to vehicular traffic, and as a means for pedestrians to reach their workplaces.

Most pre-World War II spans in Evansville have been replaced. The remaining historic road bridges, in addition to the Ohio Street Bridge, are: the Franklin Street Bridge over Pigeon Creek (53730), a concrete bridge completed in 1932; and the Fifth Avenue Bridge over Pigeon Creek (535050), a Parker through truss built in 1936. The Fifth Avenue Bridge is scheduled for replacement by the County Engineering Department.

Engineering Significance

The Ohio Street Bridge is a significant example of a Pratt through truss in Indiana. At 198 feet, it is the longest single-span highway Pratt through truss in the state. The bridge is also significant as the oldest, and one of a small number, of surviving historic iron truss bridges in Vanderburgh County. The bridge has good integrity and retains most of its original fabric. According to the HABS/HAER inventory form completed by Dr. James Cooper for the bridge in 1984, its "members are especially heavy and its special horizontal member is unique."²

Iron truss were first widely used by the railroad companies in the late nineteenth

² U.S. Department of the Interior, HABS/HAER Inventory Form for Vanderburgh County Bridge #3, Evansville, Indiana, 1984.

century. Starting in the 18770s, they were used on Indiana roads as well. Most of the major truss types were designed by civil engineers employed by railroad companies. The truss that would become the most popular type for railroad and highway bridges was designed in 1844 by Caleb and Thomas Pratt.

The Pratt truss resembled the Howe in appearance, but was structurally superior. A Pratt truss could be executed in wood or iron, and bridges of the latter were rare until after the Civil War. Improved variously over the years, the Pratt truss as employed for iron bridges had been perfected by the mid-1870s. A Pratt through truss has two trusses that are connected at the top. Each truss is composed of a top and bottom chord, inclined endposts, vertical posts, and counter bracing.

An inventory of historic metal bridges in Indiana was published in 1987.³ Bridges inventoried were unrated, or given one of the following ratings as a measure of historic significance:

- NRL Listed on the National Register of Historic Places
- NRD Part of National Register District
- NRR Recommended for the National Register
- NRC Indiana Historic Bridge Committee Candidate for the National Register
- HBP Indiana Historic Bridge Committee Pool
- ISN Outstanding or Notable on the Indiana Historic Sites and Structures Inventory
- BSN Outstanding or Notable on the Indiana Historic Bridge Inventory

The ratings NRL, NRR, and NRC indicated bridges that appeared to be individually eligible for listing in the National Register of Historic Places. Bridges rated HBP were designated for inclusion in an "Historic Bridge Pool." Bridges in this last category could increase in importance and possibly be eligible for listing on the National Register if additional information became available about the bridge that established a greater degree of significance, or if more significant bridges (bridges with NRL or NRC ratings) were removed.

At the time the historic metal bridge survey was conducted, 350 Pratt through trusses were extant in the state. Three-quarters of the Pratt through trusses surveyed were pinned. They varied in length from about 70 to about 200 feet. The oldest extant Pratt through truss identified was Martin County Bridge #79, which was built in 1877.

³ James L. Cooper, *Iron Monuments to Distant Posterity: Indiana's Metal Bridges, 1870-1930*, Indiana Department of Natural Resources, 1987.

In the survey, 16 Pratt through truss bridges were rated NRL or NRC. (There were no Pratt through trusses rated NRR.) At least eight of these have been removed since the survey was conducted. An additional 19 Pratt through truss bridges were identified in the survey as HBP. At least seven of these have been removed since the survey was conducted. Two additional bridges with the HBP ratings are scheduled for replacement. A table summarizing the status of NRL, NRC, and HBP Pratt through truss bridges is attached.

In Vanderburgh County, the number of historic iron truss bridges of all types has decreased in the past few years. Of 10 such bridges identified in the county survey and/or the historic metal bridge survey, five are extant. Of the five which have survived, two are scheduled for replacement over the next two years: the Fifth Avenue Bridge over Pigeon Creek (53505), and the Maasberg Road Bridge over Buente Creek (05048).

Two historic iron truss bridges in the county – other than the Ohio Street Bridge – have not been replaced and are not now scheduled for replacement. The Heckel Road Bridge over Bluegrass Creek (15078) is a Pratt through truss built in 1893 by the Columbia Bridge Company. It was rated outstanding in the Indiana Historic Sites and Structures Inventory, and BSN in the historic metal bridge survey. The Louisville and Nashville Railroad Bridge over Pigeon Creek (53384) is a Parker through truss built by the American Bridge Company in 1908. It was rated outstanding in the Indiana Historic Sites and Structures Inventory, and HBP in the historic metal bridge survey.

National Register of Historic Places
Continuation Sheet

Section No. 9

Page 7

Ohio Street Bridge

"A. Pfafflin, 77, Engineer, Dies Early Monday," *The Evansville Journal*, 7 January 1935.

"Barricades Put on Two Bridges," *Evansville Press*, 23 January 1937.

"Bids Rejected," *Evansville Journal*, 8 August, 1890.

"Carbuncle Causes Death of Prominent Contractor," *Evansville Journal-News*, 30 April 1907.

Cooper, James L. *Iron Monuments to a Distant Posterity: Indiana's Metal Bridges, 1870-1930*. Indianapolis: Indiana Department of Natural Resources, 1987.

Evansville City Council Records, 1889.

"Evansville's Popular City Engineer," *Evansville Journal-News*, 28 April 1912.

Gilbert, Frank M. *History of the City of Evansville and Vanderburgh County, Indiana*. Chicago: The Pioneer Publishing Company, 1910.

Historic Landmarks Foundation of Indiana. *Vanderburgh County Interim Report*. Indianapolis: Indiana Department of Natural Resources, 1994.

History of Vanderburgh County, Indiana. Brant and Fuller, 1889.

Koch, John F.W., "Ohio Street Bridge Description," 16 April 1996.

"The New Ohio Street Bridge," *Evansville Journal*, 25 July 1890.

U.S. Department of the Interior, HABS/HAER Inventory Form for Vanderburgh County Bridge #3, Evansville, Indiana, 1984.

Vanderburgh County Commissioners' Records, 1839-1854, 1887-1893.

National Register of Historic Places
Continuation Sheet

Section No. 10

Page 8

Ohio Street Bridge

Verbal Boundary Description

The boundary for the property consists of the 1891 Ohio Street Bridge, abutments, and ten feet beyond the bridge at each end.

Boundary Justification

This is a sufficient boundary to define the resource.

National Register of Historic Places
Continuation Sheet

Photographs

Page 9

Ohio Street Bridge

Information for all photographs is as follows, except as noted:

1. Ohio Street Bridge
2. Evansville, Vanderburgh County, Indiana
3. Laura Thayer
4. April 1997
5. Division of Historic Preservation and Archaeology
402 W. Washington Street, Room W274
Indianapolis, IN 46204

Additional information for individual photographs:

Photo 1

1. Ohio Street Bridge (Louisville and Nashville Railroad Bridge on left)
6. Looking northeast
7. 1 of 6

Photo 2

1. West Portal
6. Looking east
7. 2 of 6

Photo 3

1. East Portal
6. Looking west
7. 3 of 6

Photo 4

1. Detail of truss
6. Looking southeast
7. 4 of 6

Photo 5

1. North walkway
6. Looking west
7. 5 of 6

Photo 6

1. Detail under north walkway
6. Looking southwest
7. 6 of 6

UNITED STATES DEPARTMENT OF THE INTERIOR
NATIONAL PARK SERVICE

NATIONAL REGISTER OF HISTORIC PLACES
EVALUATION/RETURN SHEET

REQUESTED ACTION: NOMINATION

PROPERTY Ohio Street Bridge
NAME:

MULTIPLE
NAME:

STATE & COUNTY: INDIANA, Vanderburgh

DATE RECEIVED: 11/16/98 DATE OF PENDING LIST: 12/01/98
DATE OF 16TH DAY: 12/17/98 DATE OF 45TH DAY: 12/31/98
DATE OF WEEKLY LIST:

REFERENCE NUMBER: 98001523

NOMINATOR: STATE

REASONS FOR REVIEW:

APPEAL: N DATA PROBLEM: N LANDSCAPE: N LESS THAN 50 YEARS: N
OTHER: N PDIL: N PERIOD: N PROGRAM UNAPPROVED: N
REQUEST: N SAMPLE: N SLR DRAFT: N NATIONAL: N

COMMENT WAIVER: N

ACCEPT RETURN REJECT 12.17.98 DATE

ABSTRACT/SUMMARY COMMENTS: **Entered in the
National Register**

RECOM./CRITERIA _____

REVIEWER _____ DISCIPLINE _____

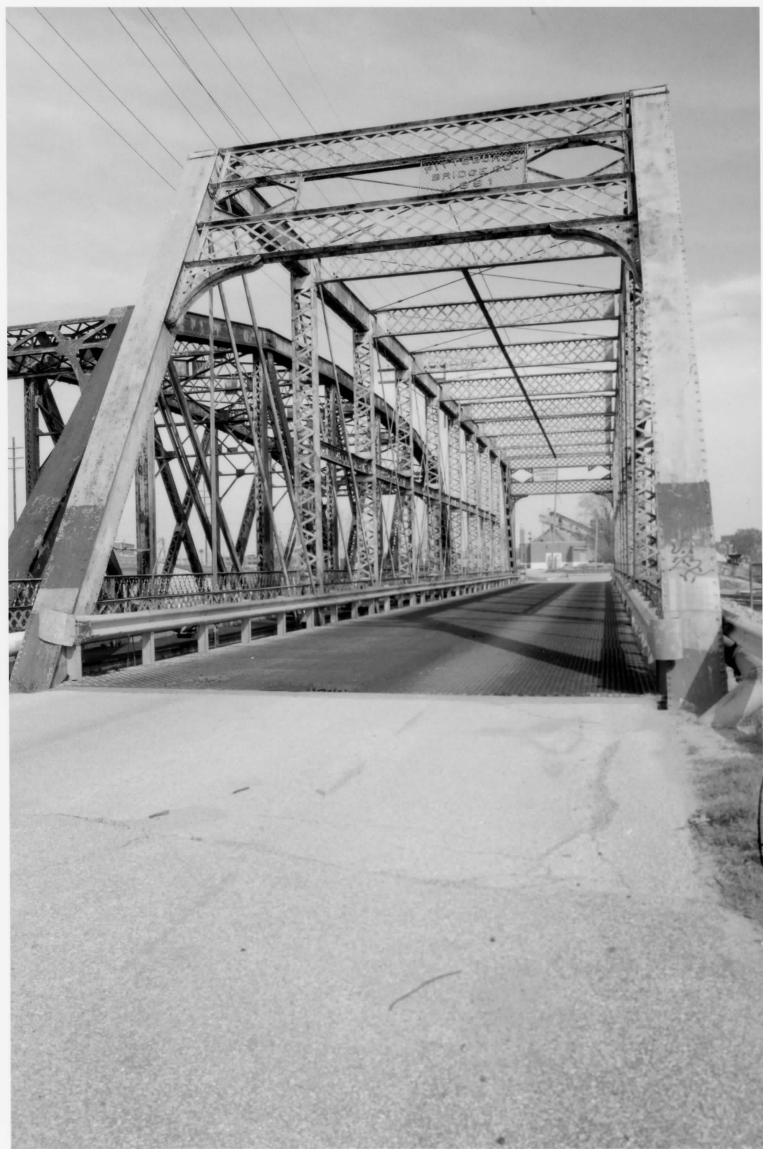
TELEPHONE _____ DATE _____

DOCUMENTATION see attached comments Y/N see attached SLR Y/N



Ohio Street Bridge
Evansville, Vanderburgh Co, IN

1 of 6



Ohio Street Bridge
Evansville, Vanderburgh Co, IN
2 of 6



Ohio Street Bridge
Evansville, Vanderburgh Co, IN
3 of 6

THIS PAPER
MANUFACTURED
BY KODAK

THIS PAPER
MANUFACTURED
BY KODAK

THIS PAPER
MANUFACTURED
BY KODAK

THIS PAPER
MANUFACTURED
BY KODAK

THIS PAPER
MANUFACTURED
BY KODAK

THIS PAPER
MANUFACTURED
BY KODAK

THIS PAPER
MANUFACTURED
BY KODAK

THIS PAPER
MANUFACTURED
BY KODAK

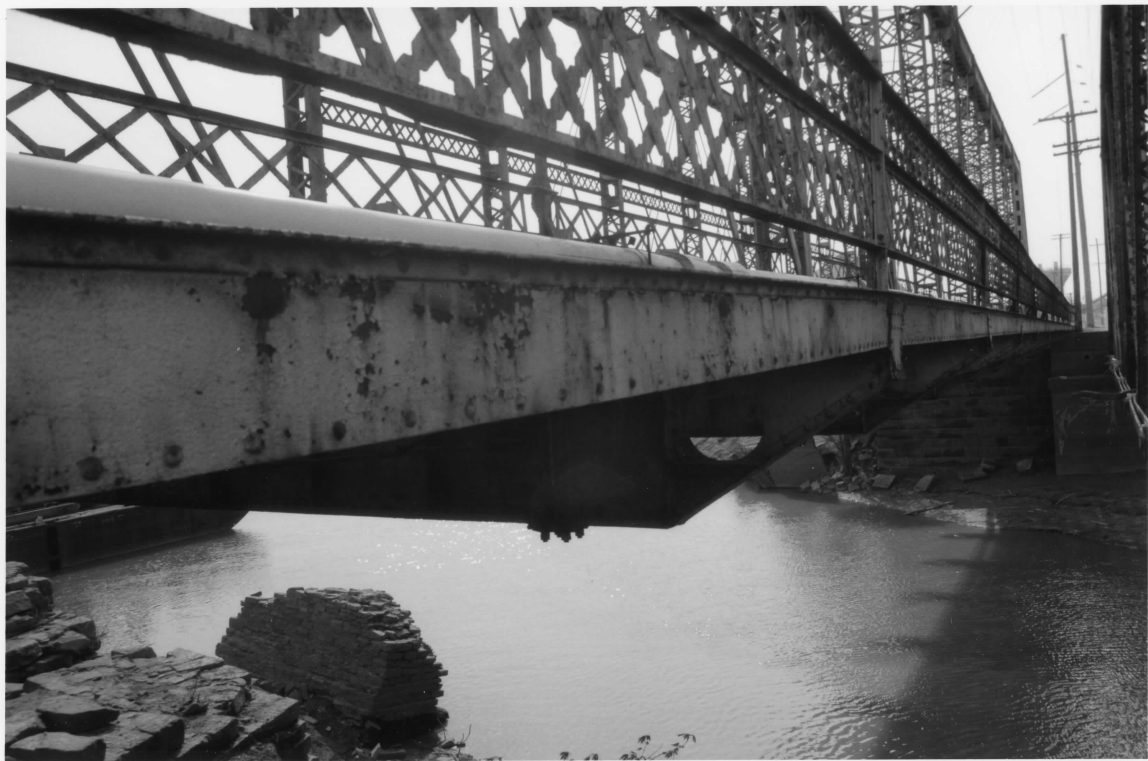
THIS PAPER
MANUFACTURED
BY KODAK



Ohio Street Bridge
Evansville, Vanderburgh Co, IN
4 of 6



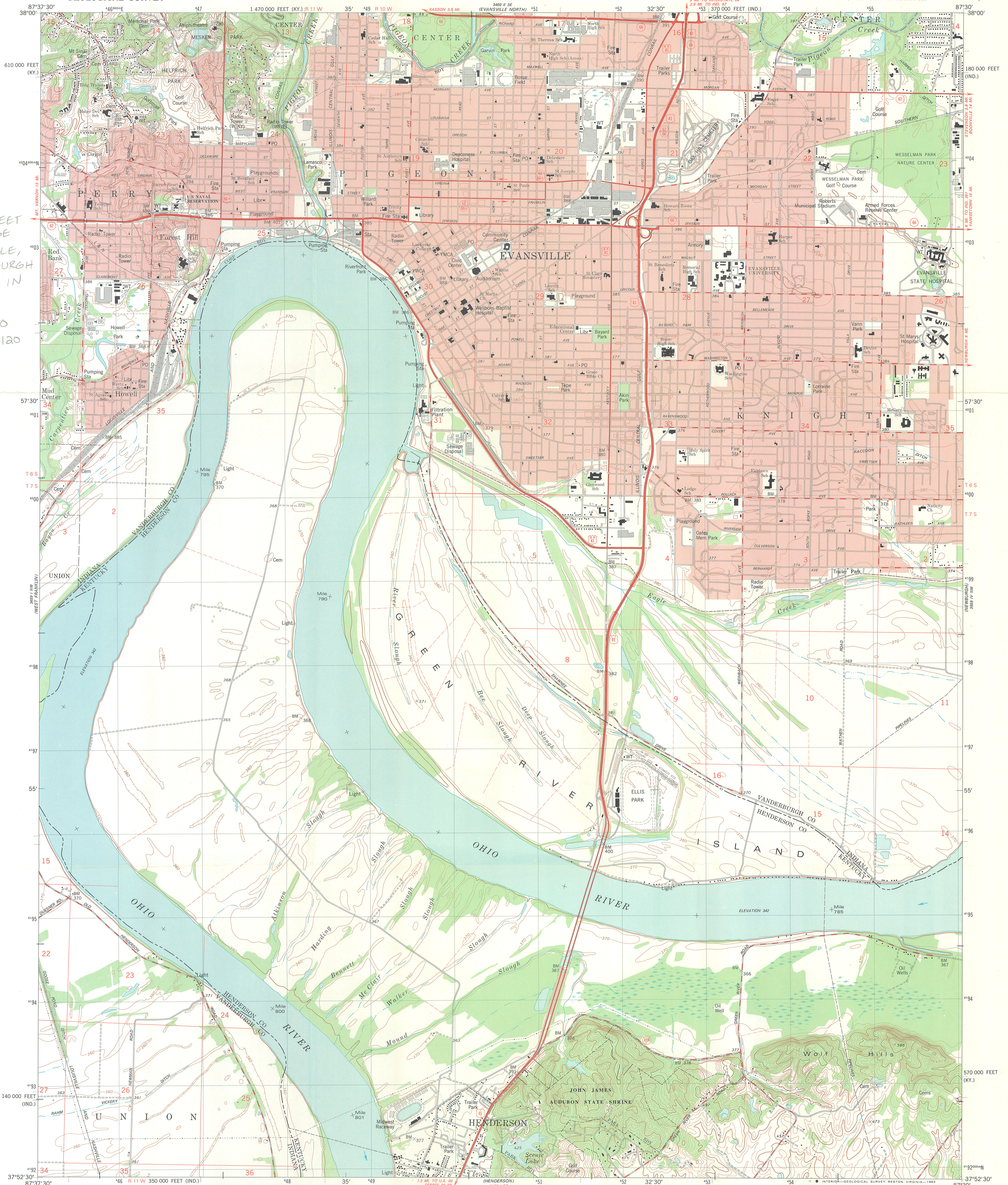
Ohio Street Bridge
Evansville, Vanderburgh Co, IN
5 of 6



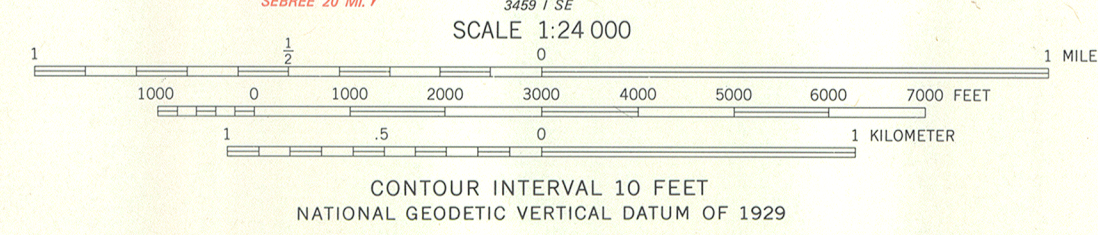
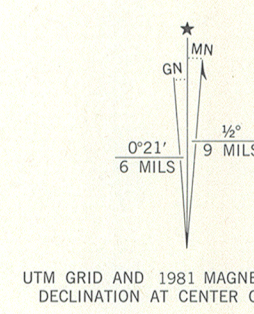
Ohio Street Bridge
Evansville, Vanderburgh Co, IN
6 of 6

OHIO STREET
BRIDGE
EVANSVILLE,
VANDERBURGH
COUNTY, IN

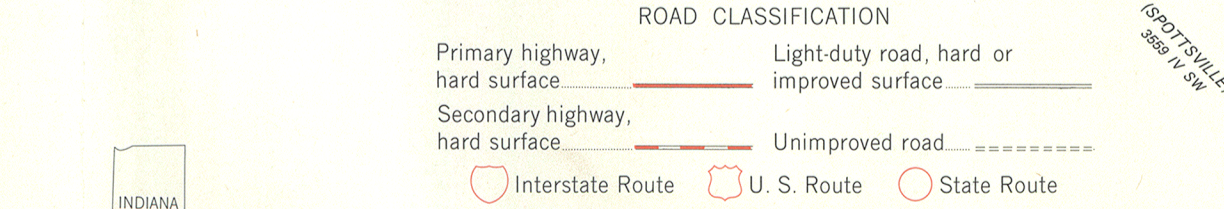
Z 16
E 448380
N 4203120



Mapped, edited, and published by the Geological Survey in cooperation with Indiana Department of Natural Resources and Kentucky Geological Survey
Control by USGS and NOS/NOAA
Culture and drainage in part compiled from aerial photographs taken 1950 (Kentucky) and 1956 (Indiana). Indiana topography by photogrammetric methods and planimetric surveys 1957
Kentucky topography by planimetric surveys 1952. Revised from aerial photographs taken 1973 and 1974. Field checked 1976. Map edited 1981
Polyconic projection, 10,000-foot grid ticks based on Indiana coordinate system, west zone, and Kentucky coordinate system, south zone
1000-meter Universal Transverse Mercator grid, zone 16
1927 North American Datum
To place on the predicted North American Datum 1983 move the projection lines 3 meters south and 2 meters east as shown by dashed corner ticks
The state boundary as shown represents the approximate position of the low waterline as determined from U. S. Corps of Engineers Ohio River charts, surveyed 1912-1913 and supplementary information
Red tint indicates areas in which only landmark buildings are shown
There may be private inholdings within the boundaries of the National or State reservations shown on this map



THIS MAP COMPLIES WITH NATIONAL MAP ACCURACY STANDARDS
FOR SALE BY U. S. GEOLOGICAL SURVEY, DENVER, COLORADO 80225, OR RESTON, VIRGINIA 22092
INDIANA DEPARTMENT OF NATURAL RESOURCES, INDIANAPOLIS, INDIANA 46204,
KENTUCKY GEOLOGICAL SURVEY, LEXINGTON, KENTUCKY 40506,
AND KENTUCKY DEPARTMENT OF COMMERCE, FRANKFORT, KENTUCKY 40601
A FOLDER DESCRIBING TOPOGRAPHIC MAPS AND SYMBOLS IS AVAILABLE ON REQUEST



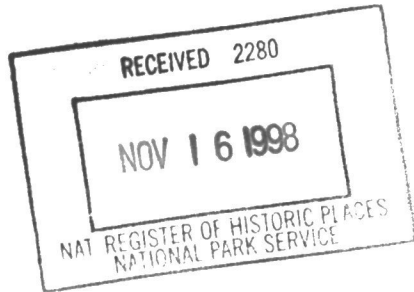
EVANSVILLE SOUTH, IND.-KY.
(FORMERLY EVANSVILLE)
NE4 HENDERSON 15' QUADRANGLE
N3752.5-W8730/7.5

1981
DMA 3459 I NE-SERIES V853

Division of Historic Preservation
and Archaeology
402 W. Washington Street, W274
Indianapolis, IN 46204-2748
PH: 317/232-1646
FAX: 317/232-0693
dhpa@dnr.state.in.us

October 19, 1998

Carol D. Shull
Keeper of the National Register
U.S. Department of the Interior
National Park Service
Cultural Resources
National Register of Historic Places
Mail Stop 2280, Suite 400
1849 C Street NW
Washington, D.C 20240



Dear Ms. Shull:

Enclosed is a National Register of Historic Places nomination for the Ohio Street Bridge, Vanderburgh County.

The Indiana Historic Preservation Review Board reviewed the nomination and voted to recommend its inclusion in the National Register of Historic Places.

Very truly yours,

Jon C. Smith
Director
Division of Historic Preservation
and Archaeology

DJF:FDH:jsg

Enclosure