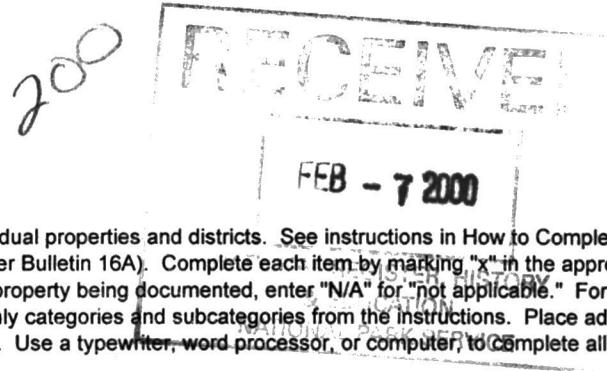


United States Department of the Interior
National Park Service

National Register of Historic Places
Registration Form



This form is for use in nominating or requesting determinations for individual properties and districts. See instructions in How to Complete the National Register of Historic Places Registration Form (National Register Bulletin 16A). Complete each item by marking "x" in the appropriate box or by entering the information requested. If an item does not apply to the property being documented, enter "N/A" for "not applicable." For functions, architectural classification, materials, and areas of significance, enter only categories and subcategories from the instructions. Place additional entries and narrative items on continuation sheets (NPS Form 10-900a). Use a typewriter, word processor, or computer, to complete all items.

1. Name of Property

historic name Twin Bridges
other names/site number Hendricks County Bridge #178, Big Four Railroad Bridge 063-149-30039, 30040, 30041

2. Location

street & number County Road 150 East over White Lick Creek N/A ☐ not for publication
city or town Danville ☒ vicinity
state Indiana code IN county Hendricks code 063 zip code 46122

3. State/Federal Agency Certification

As the designated authority under the National Historic Preservation Act, as amended, I hereby certify that this ☒ nomination
☐ request for determination of eligibility meets the documentation standards for registering properties in the National Register of
Historic Places and meets the procedural and professional requirements set forth in 36CFR Part 60. In my opinion, the property
☒ meets ☐ does not meet the National Register criteria. I recommend that this property be considered significant
☐ nationally ☐ statewide ☒ locally. (☐ See continuation sheet for additional comments.)

Signature of certifying official/Title

Date

Indiana Department of Natural Resources

State or Federal agency and bureau

In my opinion, the property ☐ meets ☐ does not meet the National Register criteria. (☐ See continuation sheet for additional comments.)

Signature of certifying official/Title

Date

State or Federal agency and bureau

4. National Park Service Certification

I hereby certify that the property is:

☒ entered in the National Register.
☐ See continuation sheet.

☐ determined eligible for the
National Register

☐ See continuation sheet.

☐ determined not eligible for the
National Register

☐ removed from the National Register

☐ other, (explain:) _____

Signature of the Keeper

Date of Action

Edson H. Beall

3/15/00

Twin Bridges

Hendricks IN

Name of Property

County and State

5. Classification**Ownership of Property**

(Check as many boxes as apply)

- ☒ private
☒ public-local
☐ public-State
☐ public-Federal

Category of Property

(Check only one box)

- ☐ building
☐ district
☐ site
☒ structure
☐ object

Number of Resources within Property

(Do not include previously listed resources in the count)

Contributing	Noncontributing	
0	0	buildings
0	0	sites
3	0	structures
0	0	objects
3	0	Total

Name of related multiple property listing

(Enter "N/A" if property is not part of a multiple property listing.)

N/A

Number of contributing resources previously listed in the National Register

0

6. Function or Use**Historic Functions**

(Enter categories from instructions)

TRANSPORTATION: Rail-Related
TRANSPORTATION: Road-Related (vehicular)

Current Functions

(Enter categories from instructions)

TRANSPORTATION: Rail-Related
VACANT Not in use

7. Description**Architectural Classification**

(Enter categories from instructions)

OTHER: Wrought-iron Baltimore
through truss

OTHER: Open-spandrel concrete
arch bridge

Materials

(Enter categories from instructions)

foundation STONE

walls

roof

other

METAL

CONCRETE

Narrative Description

(Describe the historic and current condition of the property on one or more continuation sheets.)

8. Statement of Significance**Applicable National Register Criteria**

(Mark "x" in one or more boxes for the criteria qualifying the property for National Register listing.)

- ☒ **A** Property is associated with events that have made a significant contribution to the broad patterns of our history.
- ☐ **B** Property is associated with the lives of persons significant in our past.
- ☒ **C** Property embodies the distinctive characteristics of a type, period, or method of construction or represents the work of a master, or possesses high artistic values, or represents a significant and distinguishable entity whose components lack individual distinction.
- ☐ **D** Property has yielded, or is likely to yield, information important in prehistory or history.

Criteria Considerations

(Mark "x" in all the boxes that apply.)

Property is:

- ☒ **A** owned by a religious institution or used for religious purposes.
- ☐ **B** removed from its original location.
- ☐ **C** a birthplace or grave.
- ☐ **D** a cemetery.
- ☐ **E** a reconstructed building, object, or structure.
- ☐ **F** a commemorative property.
- ☐ **G** less than 50 years of age or achieved significance within the past 50 years.

Narrative Statement of Significance

(Explain the significance of the property on one or more continuation sheets.)

Areas of Significance

(Enter categories from instructions)

ENGINEERING

TRANSPORTATION

Period of Significance

c.1870 - 1906

Significant Dates

c.1870

1887

1906

Significant Person

(Complete if Criterion B is marked above)

N/A

Cultural Affiliation

N/A

Architect/Builder

Indiana Bridge Company of Indianapolis

Dunne, W.M.

9. Major Bibliographic References**Bibliography**

(Cite the books, articles, and other sources used in preparing this form on one or more continuation sheets.)

Previous documentation on file (NPS):

- ☐ preliminary determination of individual listing (36 CFR 67) has been requested
- ☐ previously listed in the National Register
- ☐ previously determined eligible by the National Register
- ☐ designated a National Historic Landmark
- ☐ recorded by Historic American Buildings Survey # _____
- ☐ recorded by Historic American Engineering Record # _____

Primary location of additional data:

- ☒ State Historic Preservation Office
- ☐ Other State agency
- ☐ Federal agency
- ☐ Local government
- ☐ University
- ☐ Other

Name of repository:

Twin Bridges _____
Name of Property

Hendricks _____ IN _____
County and State

10. Geographical Data

Acreage of Property _____ 3.65 _____

UTM References

(Place additional UTM references on a continuation sheet.)

1

1	6
---	---

5	4	2	4	8	0
---	---	---	---	---	---

4	4	0	0	3	8	0
---	---	---	---	---	---	---

Zone Easting Northing

2

--	--

--	--	--	--	--	--

--	--	--	--	--	--	--	--

3

--	--

--	--	--	--	--	--

--	--	--	--	--	--	--	--

Zone Easting Northing

4

--	--

--	--	--	--	--	--

--	--	--	--	--	--	--	--

☐ See continuation sheet

Verbal Boundary Description

(Describe the boundaries of the property on a continuation sheet.)

Boundary Justification

(Explain why the boundaries were selected on a continuation sheet.)

11. Form Prepared By

name/title Joseph P. Saldibar III _____
organization _____ date 4/15/99 _____
street & number 1321 N. Meridian St., Apt. 417 _____ telephone 317-955-0091 _____
city or town Indianapolis _____ state IN _____ zip code 46202 _____

Additional Documentation

Submit the following items with the completed form:

Continuation Sheets

Maps

A **USGS map** (7.5 or 15 minute series) indicating the property's location.

A **Sketch map** for historic districts and properties having large acreage or numerous resources.

Photographs

Representative **black and white** photographs of the property.

Additional Items

(Check with the SHPO or FPO for any additional items)

Property Owner

(Complete this item at the request of SHPO or FPO.)

name _____
street & number _____ telephone _____
city or town _____ state _____ zip code _____

Paperwork Reduction Act Statement: This information is being collected for applications to the National Register of Historic Places to nominate properties for listing or determine eligibility for listing, to list properties and to amend existing listings. Response to this request is required to obtain a benefit in accordance with the National Historic Preservation Act, as amended (16 U.S.C. 470 *et seq.*).

Estimated Burden Statement: Public reporting burden for this form is estimated to average 18.1 hours per response including time for reviewing instructions, gathering and maintaining data, and completing and reviewing the form. Direct comments regarding this burden estimate or any aspect of this form to the Chief, Administrative Services Division, National Park Service, P.O. Box 37127, Washington, DC 20013-7127; and the Office of Management and Budget, Paperwork Reduction Projects (1024-0018), Washington, DC 20503.

**United States Department of the Interior
National Park Service**

**National Register of Historic Places
Continuation Sheet**

Section Number 7 Page 1

Twin Bridges, Hendricks County, Indiana

Architectural Description:

Introduction:

There are three resources at this site: a concrete railroad bridge, built by the Big Four Railroad; a wrought-iron highway bridge, known as Hendricks County # 178; and a stone abutment which once carried an iron railroad bridge, built by the Indianapolis & St. Louis Railroad. The two bridges span the west fork of White Lick Creek, about ½ mile southwest of Danville, Indiana. The stone abutment lies between the two bridges. The surrounding terrain is wooded and hilly to the east and south, wooded to the west, and open to the north. (PHOTO 1)

Indianapolis & St. Louis RR abutment:

This cut-stone railroad abutment (PHOTO 2) was built c.1870 to support a single-track Pratt deck truss across White Lick Creek and County Road 150 East. The Pratt deck truss was removed around 1906 when the Big Four Railroad replaced it with the concrete arch bridge. A second abutment stood on the east side of County Road 150 East until 1989, when it was torn down to make way for a new road.

The remaining abutment stands atop a substantial wingwall supporting an earthen embankment. The wingwall is also made of cut-stone blocks. The wingwall extends 20' to the north, touching the cut-stone abutments of the iron truss bridge. The south end of the wingwall is less substantial and extends only 5'. The wingwall is about 15' high and is partially covered by brush. One stone at the top of the wingwall has four metal bolts (PHOTO 3) which once anchored the Pratt truss. Other stones in this area are carved with various initials. The date "1900" appears several times in these carvings.

The abutment above the wingwall formed the back of the deck truss and carried the single rail line. It is about 10' wide and 15' tall. It is set back 5' from the edge of the wingwall. The abutment extends back to the west about 20'. The rough-faced cut-stone blocks measure 30" x 30" x 48", and are set with a lime-based mortar. (PHOTO 4)

Judging from historic photographs, the abutment and wingwall appear to have changed little over the years. The southern end of the wingwall may have been reduced in size when construction began on the concrete bridge. The elevation south of the old abutment was changed by the new rail line (which is 15' higher than the old one), and the wingwall may have simply been buried. The north wingwall and bridge abutment are in good condition. The stone blocks are intact and in place with very few exceptions. The site is overgrown, but the abutment can be seen from the road.

The east abutment was slightly smaller than the west abutment, but the wingwall was larger (it held back more fill). Like its counterpart, it was constructed of cut-stone. No trace of this abutment remains. However, the steep hill of the railroad embankment is still visible, and the old railroad line can be made out at the top. (PHOTO 7) From the road, one can visualize where the old abutment once stood.

**United States Department of the Interior
National Park Service**

**National Register of Historic Places
Continuation Sheet**

Section Number 7 Page 2

Twin Bridges, Hendricks County, Indiana

Hendricks County Bridge #178:

Hendricks County Bridge #178 (PHOTO 5) is a pin-connected Baltimore through truss constructed in 1887 by the Indiana Bridge Company of Indianapolis. It spans 149'-6" over White Lick Creek, facing northwest-southeast. The west truss is offset about 6 feet to the south. Each truss is subdivided by a series of sub-struts and sub-ties to create the equivalent of twelve short panels, each measuring 12'-5". The trusses rest on a cut-stone substructure.

The three central verticals are compression-bearing and are fabricated from two sizes of laced channels. The two outer full verticals, as well as the six sub-verticals, are made from a pair of cylindrical eyebars. The diagonals, sub-struts, and sub-ties vary from die-forged to loop-welded eyebars, some of which are adjustable. An I-beam diagonal serves as a collision strut in the first and sixth panels. The main, double-intersecting diagonals consist of three die-forged eyebars, one of which is adjustable. The truss also has an adjustable member (to protect the central verticals from buckling) parallel to and midway between the two chords across the four center panels which then stretches diagonally to the top chord-endpost connection. Heavy rectangular die-forged eyebars (three for the endpost panels; two for the center panels) form the lower chord and run through the intermediate panel points. Double U-bolts to pins below the lower chord, girder floor beams carry the asphalt-over-timber deck. The deck is 16'-8" wide and rides 17' above the water. (PHOTOS 6, 7, 8)

The bridge carries a nameplate on its southeast portal. (PHOTO 9) A similar nameplate once existed on the northwest portal, but has been removed. The railing consists of a metal channel which does not appear to be original; it is welded to the verticals. The wooden deck is in good condition, and the asphalt roadway covering it is in fair condition.

The bridge has been closed to highway traffic. Overall, the bridge is in good condition with some minor rusting.

Big Four RR Bridge:

This three-span concrete structure (PHOTO 10) was built in 1906 to carry two railroad tracks across White Lick Creek and County Road 150 East. The rings are segmental and coped. They are about 2' deep at the center of each span, and about 4' deep where they join a pier tower or abutment. They are raised vertically on the piers (PHOTO 11) as necessary to balance each other (10-12' in the center span). Above the rings, arched spandrel columns support a 2' concrete slab deck on which the crushed-stone roadbed lies. The spandrel columns are solid and extend the width of the structure, creating a series of tunnel-like cells within the bridge. (PHOTO 12) A 3'-square access hole in the center of each spandrel column allows access to the entire structure. The heavy piers are hollow inside to conserve concrete. A 15' high concrete wingwall holds back the embankment below the east abutment to allow the County road to pass through the east arch. The date "1906" is carved into the center arch on both sides of the bridge. (PHOTO 13)

**United States Department of the Interior
National Park Service**

**National Register of Historic Places
Continuation Sheet**

Section Number 7.8 Page 3

Twin Bridges, Hendricks County, Indiana

The bridge and both tracks are still actively used. The bridge is in good condition, although it is in need of maintenance. The south side of the bridge seems to have weathered more than the north side; in one case, the concrete has worn away to expose the reinforcing rods in a few spandrel columns in the west arch. (PHOTO 14) The interior of the bridge is covered with graffiti, but the exterior is not. The bridge maintains its integrity and appears to have undergone no modifications or alterations in its 90 years of service. The coping of the arch rings is unusual, especially for a railroad bridge in a rural setting.

Statement of Significance:

Overview:

The Twin Bridges of Hendricks County consist of an iron truss highway bridge and a concrete railroad bridge, both spanning White Lick Creek just east of Danville. A stone abutment, all that remains of an earlier iron railroad bridge which spanned the Creek, is a contributing resource. All three structures are significant under Criterion C (Engineering) and Criterion A (Transportation). The iron bridge, known as Hendricks County Bridge #178, is a rare example of a Baltimore truss bridge, which was used in the late 19th century for railroads and (more rarely) for highways. The concrete bridge, which carries two CSX railroad tracks, is a very early example of an open-spandrel concrete arch bridge. The stone bridge abutment is a rare survivor from the early days of the railroad in Indiana.

The Twin Bridges retain their integrity. One stone abutment for the old iron railroad bridge still stands; the other was demolished recently to make way for a new connector road. The remaining abutment retains its integrity, and the site as a whole has not been significantly altered by this new construction. The bridges stand as monuments to the expansion of transportation in Hendricks County, and the rapid changes in technology that helped to speed that expansion. The iron and concrete bridges were rated "Outstanding" in the *Hendricks County Interim Report* (1989). The stone abutment was rated "Contributing".¹

Railroad Abutment:

The Indianapolis & St. Louis Railroad was organized in 1868 to build a railroad between Terre Haute and Indianapolis, linking with the St. Louis, Alton, and Terre Haute RR's line to St. Louis.² This was the first link between the Hoosier capitol and the bustling center of the country. The line was completed through Putnam County by 1870; presumably, the Hendricks County portion was completed about the same time.³

In crossing the west fork of White Lick Creek, the railroad's engineers devised a rather monumental structure; an eight-panel Pratt deck truss seated on large, cut-stone abutments. Deck trusses

**United States Department of the Interior
National Park Service**

**National Register of Historic Places
Continuation Sheet**

Section Number 8 Page 4

Twin Bridges, Hendricks County, Indiana

are not common to Indiana, for rarely is the grade high enough (or the clearance great enough) to allow the trussing to lie below the roadway. At the Twin Bridges site, however, a large hill on the east side of the stream necessitated the construction of a large embankment to the west, as well as a high-level crossing. The single-track deck truss appears quite substantial in historic photographs; the trusses themselves are at least as large as the current Baltimore highway truss.⁴

The surviving bridge abutment seems rather small today, considering the large structure it once carried. The abutment is high, but not particularly wide. The east abutment was somewhat larger, because it had to hold back a larger amount of earth. The west abutment was also limited in size by County Road 150, which passes just to the north. In fact, the stone substructure for the Baltimore truss touches the stone abutment for the old Pratt railroad bridge.

The stone abutment retains a surprising degree of integrity. Although the site has gradually become overgrown with trees and brush, the stonework is clearly visible. The stones are also still firmly in place, unmoved by more than a century of abandonment. A reminder of the great truss which once stood here can be seen in the remains of the iron bolts which anchored the span to the stone.

The east abutment was torn down by the county in 1989. This allowed for the construction of a new road which connects to US 36. Previously, county residents traveling down Twin Bridges Road had to make a sharp turn on the iron bridge, then follow a twisty route into town, through back streets, before reaching the main road. The new road bypasses the iron bridge, which is now closed to traffic. Although the east abutment is gone, the railroad embankment behind it still exists. Standing at the site, one can easily visualize where the old abutment and railroad bridge stood.

Twin #1: Hendricks County Bridge #178

The Indianapolis Bridge Company began operation in 1883 with \$10,000 in capital and the backing of two experienced bridge builders. Company President William W. Winslow had worked for the King Iron Bridge Company and the Wrought Iron Bridge Company, two of Ohio's most prolific bridge builders. Company Vice-President Solomon H. Godman held patents for a "plate-leg girder" design, and was a skilled engineer.⁵

In short order Godman and a group of Indianapolis businessmen raised \$75,000 in additional stock and overthrew Winslow as president. In doing so, they removed themselves from the control of the Wrought Iron Bridge Company, and began to fabricate and design their own bridges.

The new company built more than 180 bridges across the state; a handful still stand. Competition from Ohio firms proved to be too much, however, and the fledgling company found itself on the financial shoals by 1885. Salvation came in the form of a group of Muncie businessmen, who reorganized the firm as the Indiana Bridge Company of Indianapolis in May, 1886. This was the situation when the company contracted to build a bridge over White Lick Creek in Hendricks County, just east of Danville, which

**United States Department of the Interior
National Park Service**

**National Register of Historic Places
Continuation Sheet**

Section Number 8 Page 5

Twin Bridges, Hendricks County, Indiana

would become known as Hendricks County Bridge #178.⁶ The firm moved to Muncie, Indiana in late 1887, and became known as the Indiana Bridge Company. There they would become the largest and most prolific Indiana bridge builder.

Hendricks County # 178 is not the first highway bridge to span this particular stretch of White Lick Creek. A bridge of some sort was listed in the 1876 county atlas of Hendricks County. This may have been a timber bridge or an iron one.⁷ When designing the replacement structure, the Indiana Bridge Company faced an unusual challenge- designing a heavy duty bridge, on a skew, that was compact enough to fit under the I&StL's railroad bridge. The skew was necessary to snake around the massive stone abutments holding up the deck truss.

The new bridge fit-- but barely. Photographs of these "twin" bridges show the upper chord of the Baltimore truss only a few feet from the bottom chord of the Pratt deck. Likewise, the road continued to wind around the stone abutments. Wagons entering the bridge from the southeast had to negotiate a 90 degree turn before crossing the river.

The tight squeeze caused by the railroad bridge may be the reason why the County Commissioners selected this unusual truss type. Certainly a twisty county road like this was not intended to handle heavy traffic loads. Alternate routes were available for residents living in the southeast part of Center Township. However, the length of the span required- 150 feet -was generally the upper limit of most Pratt truss bridges in the 19th century.⁸ Lengthening the Pratt any further would have required unusually high trusses, and these would not fit under the deck truss bridge. The Baltimore may have been a better option.

Hendricks # 178 is an important survivor in that it is one of only 3 surviving Baltimore truss bridges in Indiana, and one of only 2 highway trusses. In addition, the bridge is one of only two structures still standing which are known to have been built by the Indiana Bridge Company during its short-lived tenure in Indianapolis (the other bridge, in both cases, is Martin County #21).

The iron bridge was closed to traffic in 1989 when the new connector road to US 36 was built. Leaving the bridge open would have created a major traffic hazard. Bypassing the old road also protected Bridge # 178 from being torn down. The bridge is currently not maintained, but no significant signs of deterioration are evident. Plans are currently underway to restore the bridge for pedestrian use.

The Baltimore Truss:

The growth of America's railroad system (160,000 miles of track was built between 1865 and 1900) and the increasing size of trains placed ever-increasing demands on the bridges which carried them.⁹ In the 1870s and 1880s, it was common to have at least 25 bridge failures per year on America's railroads, or one for every 5,000 miles of track.¹⁰

Early railroad bridges usually employed one of two truss types: the Pratt and the Howe. Both were originally designed to combine wood and metal members, but by the 1870s they were being made

United States Department of the Interior
National Park Service

National Register of Historic Places Continuation Sheet

Section Number 8 Page 6

Twin Bridges, Hendricks County, Indiana

entirely of iron to increase their strength. Both bridges had their limits, however, and the railroads often tested them with disastrous results. Two high-profile accidents in the late 1870s involving Howe trusses placed the need for better bridges in the public spotlight.¹¹ Engineers soon began tinkering with the Pratt's design to give the truss a greater carrying capacity. The first of these 'modified trusses' was the Baltimore truss, first built in 1871.¹²

The Baltimore truss featured subdivided panels, which in turn helped support a much lighter and stronger floor system than would have been possible with a comparative Pratt truss. The use of subdividing diagonals was cheaper than the conventional strengthening method of multiple-panel diagonals (such as the Whipple truss) because it used less iron. Thus, the Baltimore was stronger and cheaper than competing designs. The truss was named for the Baltimore and Ohio Railroad, which was completing a major expansion program in the 1870s and became the leading builder of the new bridge type.¹³

Twin #2: Big Four Railroad Bridge

The Indianapolis and St. Louis Railroad came under the control of the Cleveland, Columbus, Cincinnati, and Indianapolis Railroad in 1882. Known popularly as the "Bee Line", the C.C.C. & I. was a Vanderbilt-backed organization with an eye for expansion. It merged with the Cincinnati, Indianapolis, St. Louis, and Chicago Railroad (commonly known as the "Big Four") in 1889.¹⁴

The newly formed Cleveland, Cincinnati, Chicago, and St. Louis Railroad (also known as the "Big Four") was a subsidiary of the New York Central Railroad, one of the largest rail networks in America. Although technically an independent firm, the Big Four worked according to the NYC's plans. At the turn of the century, those plans were for expansion.¹⁵

By 1900 the New York Central and its archrival, the Pennsylvania Railroad, found themselves competing for the same traffic along nearly parallel routes. In Hendricks County, for example, the Big Four RR ran west-east through Reno, Danville, and Avon, while the Pennsy ran west-east through Coatsville, Amo, and Plainfield. In addition, the B&O Railroad had a line running to Indianapolis through Brownsburg in the northeast corner of the county. Competition was fierce, and every company did what was needed in order to stay one step ahead. With this in mind, NYC set out to double-track its Big Four lines in Indiana.

The I&STL RR deck truss, just three decades old, was already outdated. Expansion of the bridge was impossible due to site constraints. A heavier truss in the same spot would interfere with the county bridge below. The only option, and the one eventually taken, was to bypass the old span entirely and start from scratch just downstream.

Once again, railroad engineers were faced with a site problem rarely found in Indiana- a wide and deep river valley combined with a high embankment and a rather cluttered valley floor. To span the river at this point (with two tracks) would have required a Pennsylvania truss, and a large one at that. Concrete,

United States Department of the Interior
National Park Service

National Register of Historic Places Continuation Sheet

Section Number 8 Page 7

Twin Bridges, Hendricks County, Indiana

still somewhat of a novelty in bridge construction, was the only alternative. W.M. Dunne, the bridge engineer, settled upon an open-spandrel arch as the best practical option. Normally this type of bridge, which required a good deal of formwork to construct, was too expensive to be feasible. Only high spans like the Twin Bridges site could justify the expense.

The concrete bridge was completed in 1906. This puts it among the oldest concrete spans in Indiana, as well as one of the oldest open-spandrel bridges in the state. Four other open-spandrels were completed that year, all by the Big Four Railroad: two in Putnam County, one in Decatur County, and one a few miles from Twin Bridges at Avon, in Hendricks County. Open-spandrel arches are rare in Indiana. According to Dr. James Cooper, who inventoried concrete bridges in his 1997 book *Artistry and Ingenuity in Artificial Stone*, there are only 28 open-spandrel arches remaining in the state.

The concrete span gathered its share of national attention. Noted author Henry Tyrell included bridges from around the country as examples in his acclaimed 1912 work, *Artistic Bridge Design*. Tyrell selected the open-spandrel over White Lick Creek as one of two dozen reinforced concrete bridges to appear in his text and illustrations.¹⁶

The Twins Together:

Over the years, the Twin Bridges site has become a source of local folklore. The most commonly told ghost story involves a worker who slipped and fell into the wet concrete while the bridge was under construction. Supposedly, the other workers could not afford the delays that a rescue would entail, so they continued to pour concrete over the man until he was entombed. When they were finished, only the worker's saw extended above the concrete; this was cut off to hide the evidence. The story concludes, like many of its kind, with reports of a continual haunting of the bridge by the man entombed within. Ghostly screams are supposed to emanate from the structure, particularly at midnight or when a train passes overhead.¹⁷

Such stories are nothing new, of course. Just a few miles away, Avon's "Haunted Bridge" is the supposed roaming ground for half a dozen spirits. The wealth of local stories may not offer much proof of paranormal activity, but it does give an insight into the local significance of the Twin Bridges. Generations of Hendricks County teens have made trips to the bridges in the dark of night, to brave the ghosts as a sort of 'rite of passage', and future generations will no doubt follow in their footsteps.¹⁸ As Jim Cooper mentions in his book, *Artistry and Ingenuity in Artificial Stone*: "Adults reinforce the legends swirling around the...Twin Bridges by periodically repeating them in print."¹⁹

The Twin Bridges have also been a popular subject for local businesses. There have been many "Twin Bridges" postcards sold over the years. In Danville, there is a "Twin Bridges" golf club, and a "Twin Bridges" recycling company. The road which runs to the iron truss is named, appropriately, "Twin Bridges Road".

**United States Department of the Interior
National Park Service**

**National Register of Historic Places
Continuation Sheet**

Section Number 8 Page 8

Twin Bridges, Hendricks County, Indiana

Conclusion:

The Twin Bridges stand as a reminder to a period in time when rapid growth was transforming the Indiana countryside. Railroads and highways were continually upgraded to meet the ever-growing demands of their users. In just 35 years, this crossing saw at least four bridges rise and fall along the creek banks; two highway bridges, including Hendricks County # 1 78, and two railroad bridges; one iron, one concrete. The careful stonework of the surviving railroad abutment contrasts with the massive bulk of the concrete arches. Between them, the complex iron work of the Baltimore truss stands as a reminder to the glory days of Indiana bridge-building.

All three structures represent rare building types in Indiana. The Baltimore truss is one of only three to survive in the state. It is also one of only two bridges remaining from the days when the Indiana Bridge Company operated in Indianapolis; a 'bridge' of sorts between the fledgling Indianapolis Bridge Company and the nationally-known Indiana Bridge Company of Muncie. The concrete arch span is among the oldest of its kind, as well as one of the oldest concrete bridges in general. It is also one of just 28 open-spandrel arch bridges still extant in Indiana. The stone railroad abutment is an unusual example of a first generation railroad structure. The railroads were constantly upgrading and replacing their assets; to have such a large structure survive for so long is quite unusual.

The old iron bridge was bypassed in 1989 when a new road was built to provide a direct link to U.S. Route 36. The new connector road has altered the formerly secluded nature of the spans, but they retain their architectural character and integrity. Neither they nor the 1870 stone abutment have undergone any significant changes since their construction. The site is important as a long-standing transportation link for both rail and road traffic. In addition, the two surviving bridges have become beloved local landmarks, complete with their own ghost story. For these reasons, these three structures deserve the honor of listing in the National Register of Historic Places.

United States Department of the Interior
National Park Service

National Register of Historic Places
Continuation Sheet

Section Number 8 Page 9

Twin Bridges, Hendricks County, Indiana

Endnotes:

1. Historic Sites and Structures Inventory Interim Report: Hendricks County. Indianapolis: Historic Landmarks Foundation of Indiana, 1989, 38.
2. Drury, George H. The Historical Guide to North American Railroads. Waukesha, WI: Kalbach Books, 1991, 213.
3. Historic Sites and Structures Inventory Interim Report: Putnam County. Indianapolis: Historic Landmarks Foundation of Indiana, 1982, xix.
4. Historic Sites and Structures Inventory Interim Report: Hendricks County, 19; Industrial Souvenir of Hendricks County, State of Indiana. Plainfield, IN: Friends Press, 1904, 12.
5. Cooper, James L. Iron Monuments to Distant Posterity: Indiana's Metal Bridges 1870-1930. Greencastle, IN: DePauw University, 1987, 16.
6. *Ibid*, 17.
7. Andreas, A.T. Illustrated Historical Atlas of the State of Indiana. Chicago: Baskin, Forster, & Co., 1876, 32.
8. Cooper, Iron Monuments, 64.
9. Parker, Francis H. Indiana Railroad Depots: A Threatened Heritage. Muncie, IN: Ball State University, 1989, 2.
10. Steinmann, David B. Bridges and Their Builders. New York: Dover Publications, 1957, 166.
11. *Ibid*, 165. The bridge failures were the 1877 collapse of the Ashtabula Bridge in Ohio, and the 1879 collapse of the Firth of Tay Bridge in Scotland. Both accidents killed nearly 100 people.
12. Cooper, Iron Monuments, 68.
13. Drury, 36.
14. *Ibid*, 214.
15. *Ibid*.
16. Cooper, James L. Artistry and Ingenuity in Artificial Stone: Indiana's Concrete Bridges 1900-1942. Greencastle, IN: DePauw University, 1997, 223.
17. Baker, Ronald L. Hoosier Folk Legends. Bloomington, IN: Indiana University Press, 1982, 64.
18. Degh, Linda. "The Haunted Bridges Near Avon and Danville and Their Role in Legend Formation." *Indiana Folklore* (1969), II, 75.
19. Cooper, Artistry and Ingenuity, 223.

United States Department of the Interior
National Park Service

National Register of Historic Places
Continuation Sheet

Section Number 9 Page 10

Twin Bridges, Hendricks County, Indiana

Bibliography:

Andreas, A.T. Illustrated Historical Atlas of the State of Indiana. Chicago: Baskin, Forster, & Co., 1876.

Baker, Ronald L. Hoosier Folk Legends. Bloomington, IN: Indiana University Press, 1982.

Cooper, James L. Artistry and Ingenuity in Artificial Stone: Indiana's Concrete Bridges 1900-1942. Greencastle, IN: DePauw University, 1997.

Cooper, James L. Iron Monuments to Distant Posterity: Indiana's Metal Bridges 1870-1930. Greencastle, IN: DePauw University, 1987.

Degh, Linda. "The Negro in the Concrete." *Indiana Folklore* (1968) I: 61-67.

Degh, Linda. "The Haunted Bridges Near Avon and Danville and Their Role in Legend Formation." *Indiana Folklore* (1969) II: 54-89.

Drury, George H. The Historical Guide to North American Railroads. Waukesha, WI: Kalbach Books, 1991.

Historic Sites and Structures Inventory Interim Report: Hendricks County. Indianapolis: Historic Landmarks Foundation of Indiana, 1989.

Historic Sites and Structures Inventory Interim Report: Putnam County. Indianapolis: Historic Landmarks Foundation of Indiana, 1982.

Industrial Souvenir of Hendricks County, State of Indiana. Plainfield, IN: Friends Press, 1904.

Parker, Francis H. Indiana Railroad Depots: A Threatened Heritage. Muncie, IN: Ball State University, 1989.

Steinmann, David B. Bridges and Their Builders. New York: Dover Publications, 1957.

**United States Department of the Interior
National Park Service**

**National Register of Historic Places
Continuation Sheet**

Section Number 10 Page 11

Twin Bridges, Hendricks County, Indiana

Verbal Boundary Description:

The boundary is defined by a circle whose center is at the southeast corner of Hendricks County Bridge #178. The circle has a radius of 225 feet.

Boundary Justification:

Contains the two bridges and the stone abutment within their historic context area.

**United States Department of the Interior
National Park Service**

**National Register of Historic Places
Continuation Sheet**

Section Number Photos Page 12

Twin Bridges, Hendricks County, Indiana

Photographs:

The following information is common to all photographs:

1. Twin Bridges
2. Hendricks County, Indiana
3. Joseph P. Saldibar, III
4. February 20, 1999
5. Indiana Department of Natural Resources,
Division of Historic Preservation and Archaeology
402 W. Washington St., Room W274
Indianapolis, IN 46202

#s 6 and 7 vary as noted in the following list:

<u>Photo #</u>	<u>Description of View</u>
1	1887 Baltimore truss, c.1870 stone abutment, and 1906 concrete bridge, looking west.
2	c.1870 stone railroad abutment, general view, looking west.
3	Detail, stone abutment, showing iron bolts which once anchored the Pratt deck truss railroad bridge. Looking east.
4	Detail, stone abutment, showing cut-stone blocks of abutment face. Looking west
5	1887 Baltimore truss, general viewm looking northwest.
6	Detail, Baltimore truss, showing pinned connection of lower chord, verticals, and diagonal members. Looking southwest.
7	Detail, Baltimore truss, showing truss webbing. Also shows hill in background which is all that remains of the east stone abutment (demolished 1989) and embankment for old I.&St.L RR line. Looking east.
8	Detail, Baltimore truss, showing truss webbing. Also shows 1906 concrete bridge. Looking southeast.
9	Detail, Baltimore truss, showing bridge nameplate, top chord, portal, and skew. Looking west.

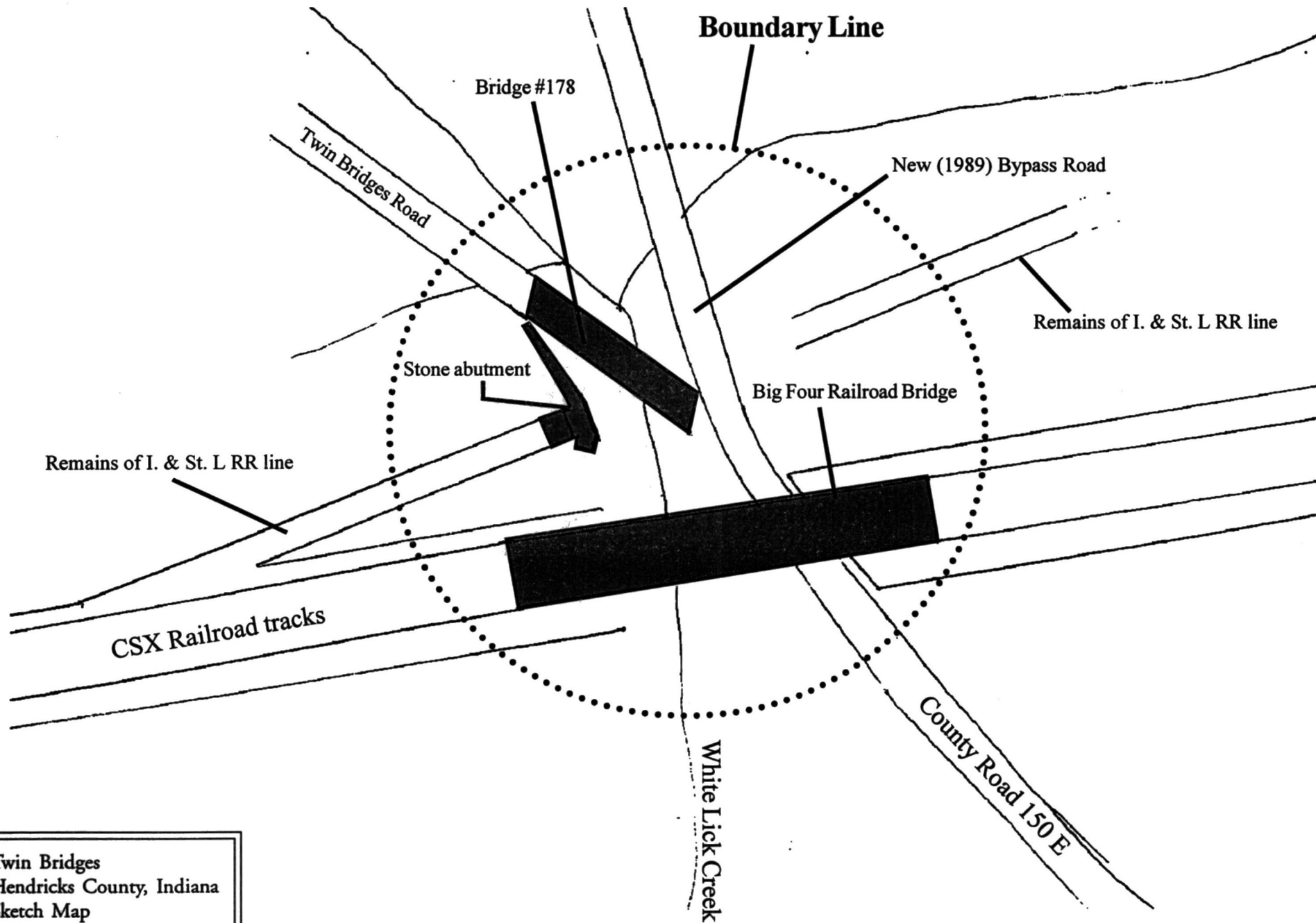
**United States Department of the Interior
National Park Service**

**National Register of Historic Places
Continuation Sheet**

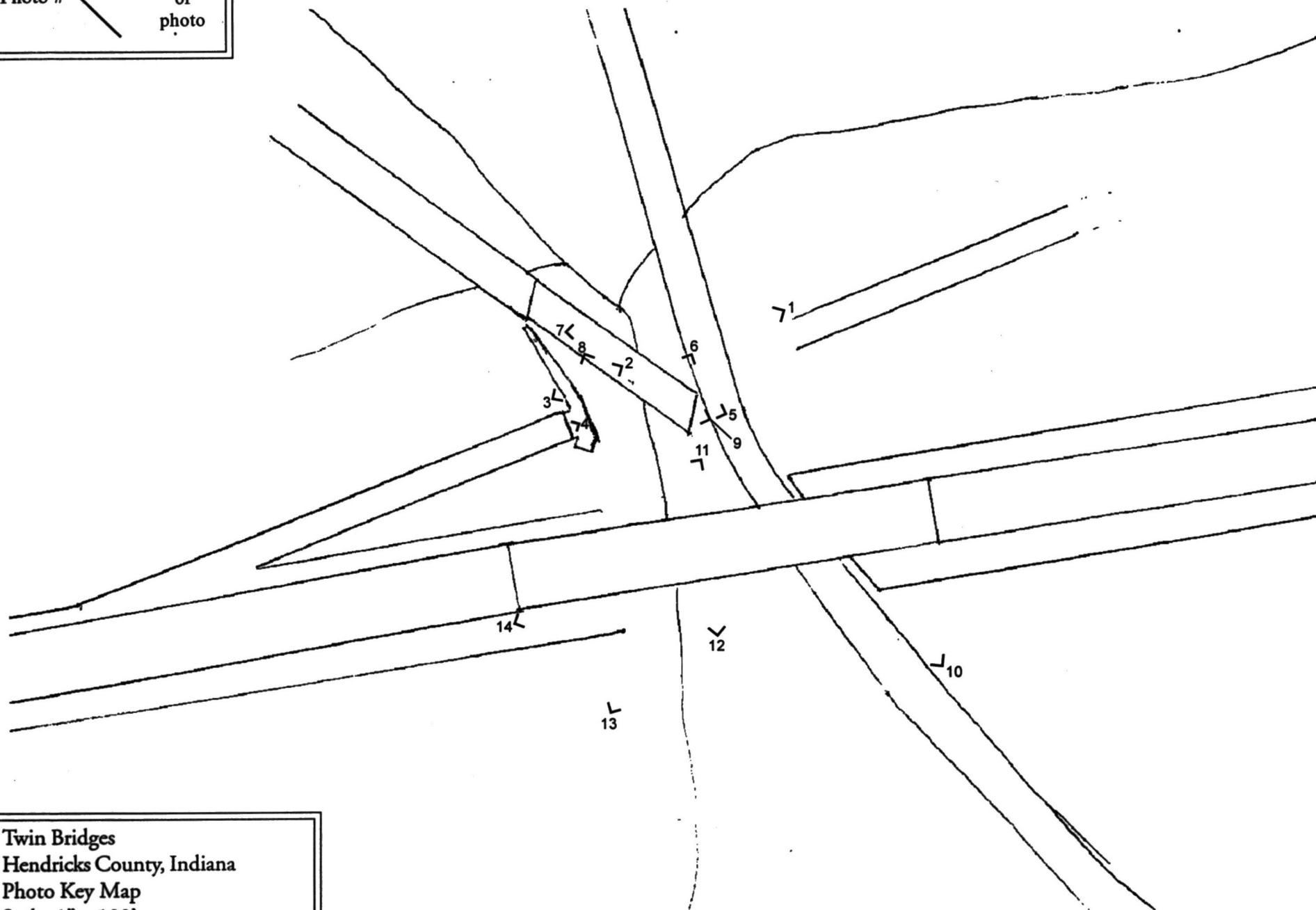
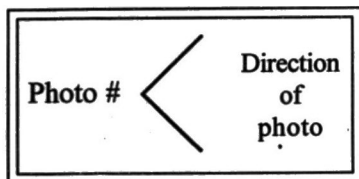
Section Number Photos Page 13

Twin Bridges, Hendricks County, Indiana

<u>Photo #</u>	<u>Description of View</u>
10	1906 concrete railroad bridge, general view, looking northwest.
11	Detail, concrete bridge, showing center arch and west bridge pier. Looking southwest.
12	Detail, concrete bridge, showing center span and solid spandrel columns. Also shows the Baltimore truss. Note the CSX freight train crossing overhead.
13	Detail, concrete bridge, showing center arch. Note coped rings and date carved into center of span. Looking north.
14	Detail, concrete bridge, showing spandrel column deterioration and CSX freight train. Looking west.



Twin Bridges
Hendricks County, Indiana
Sketch Map
Scale: 1" = 100'



Twin Bridges
Hendricks County, Indiana
Photo Key Map
Scale: 1" = 100'

UNITED STATES DEPARTMENT OF THE INTERIOR
NATIONAL PARK SERVICE

NATIONAL REGISTER OF HISTORIC PLACES
EVALUATION/RETURN SHEET

REQUESTED ACTION: NOMINATION

PROPERTY Twin Bridges
NAME:

MULTIPLE
NAME:

STATE & COUNTY: INDIANA, Hendricks

DATE RECEIVED: 2/07/00 DATE OF PENDING LIST: 2/24/00
DATE OF 16TH DAY: 3/12/00 DATE OF 45TH DAY: 3/24/00
DATE OF WEEKLY LIST:

REFERENCE NUMBER: 00000200

REASONS FOR REVIEW:

APPEAL: N DATA PROBLEM: N LANDSCAPE: N LESS THAN 50 YEARS: N
OTHER: N PDIL: N PERIOD: N PROGRAM UNAPPROVED: N
REQUEST: N SAMPLE: N SLR DRAFT: N NATIONAL: N

COMMENT WAIVER: N

☒ ACCEPT ☐ RETURN ☐ REJECT 3/15/00 DATE

ABSTRACT/SUMMARY COMMENTS:

Entered in the
National Register

RECOM./CRITERIA_____

REVIEWER_____ DISCIPLINE_____

TELEPHONE_____ DATE_____

DOCUMENTATION see attached comments Y/N see attached SLR Y/N



1. Twin Bridges
2. Hendricks Co., Indiana
7. Photo # 1



1. Twin Bridges
2. Hendricks Co., Indiana
7. Photo # 2



1. Twin Bridges

2. Hendricks Co., Indiana

7. Photo # 3



1. Twin Bridges

2. Hendricks Co., Indiana

7. Photo # 4



1. Twin Bridges

2. Hendricks Co., Indiana

7. Photo # 5



1. Twin Bridges

2. Hendricks Co., Indiana

7. Photo # 6



1) Twin Bridges

2) Hendricks Co., Indiana

7) Photo # 7



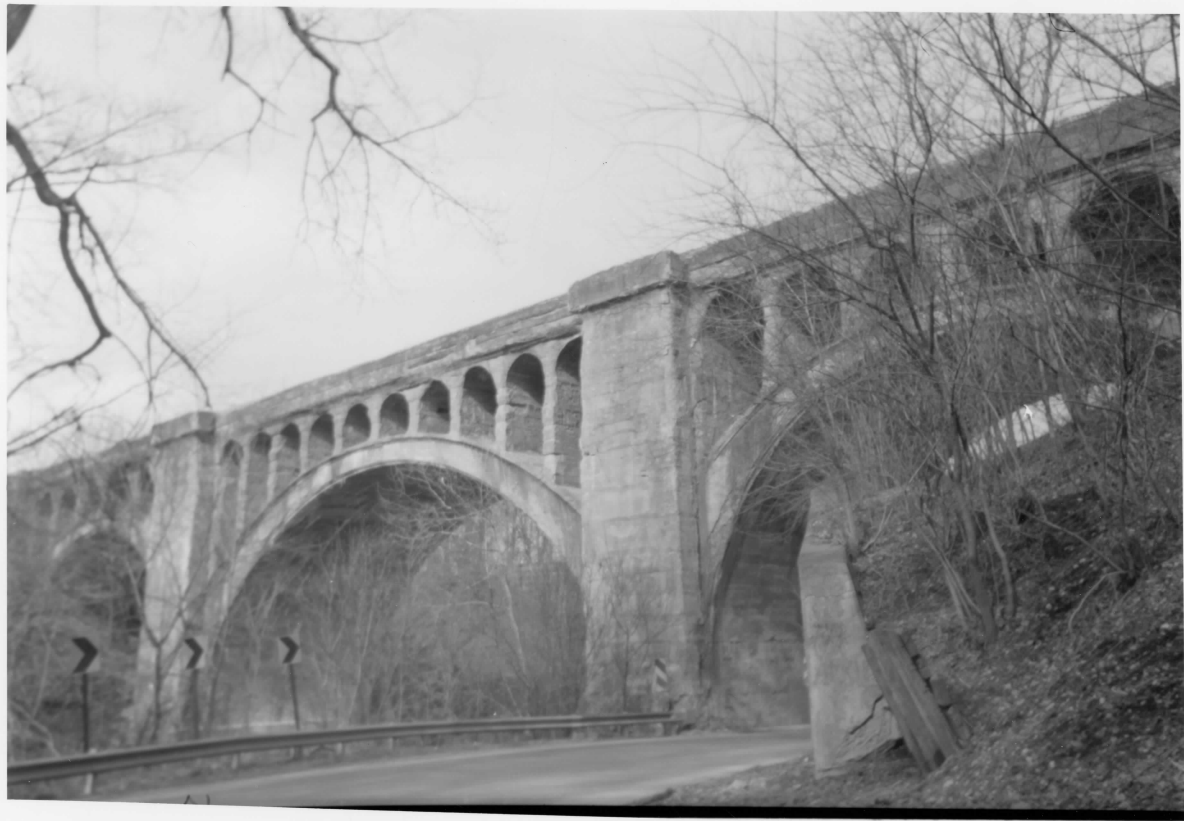
- 1) Twin Bridges
- 2) Hendricks Co. Indiana
- 7) Photo # 8



1) Twin Bridges

2) Hendricks Co., Indiana

7) Photo # 9



1. Twin Bridges

2. Hendricks Co., Indiana

7. Photo # 10



1. Twin Bridges
2. Hendricks Co., Indiana
7. Photo # 11



1. Twin Bridges

2. Hendricks Co., Indiana

7. Photo # 12



1. Twin Bridges

2. Hendricks Co., Indiana

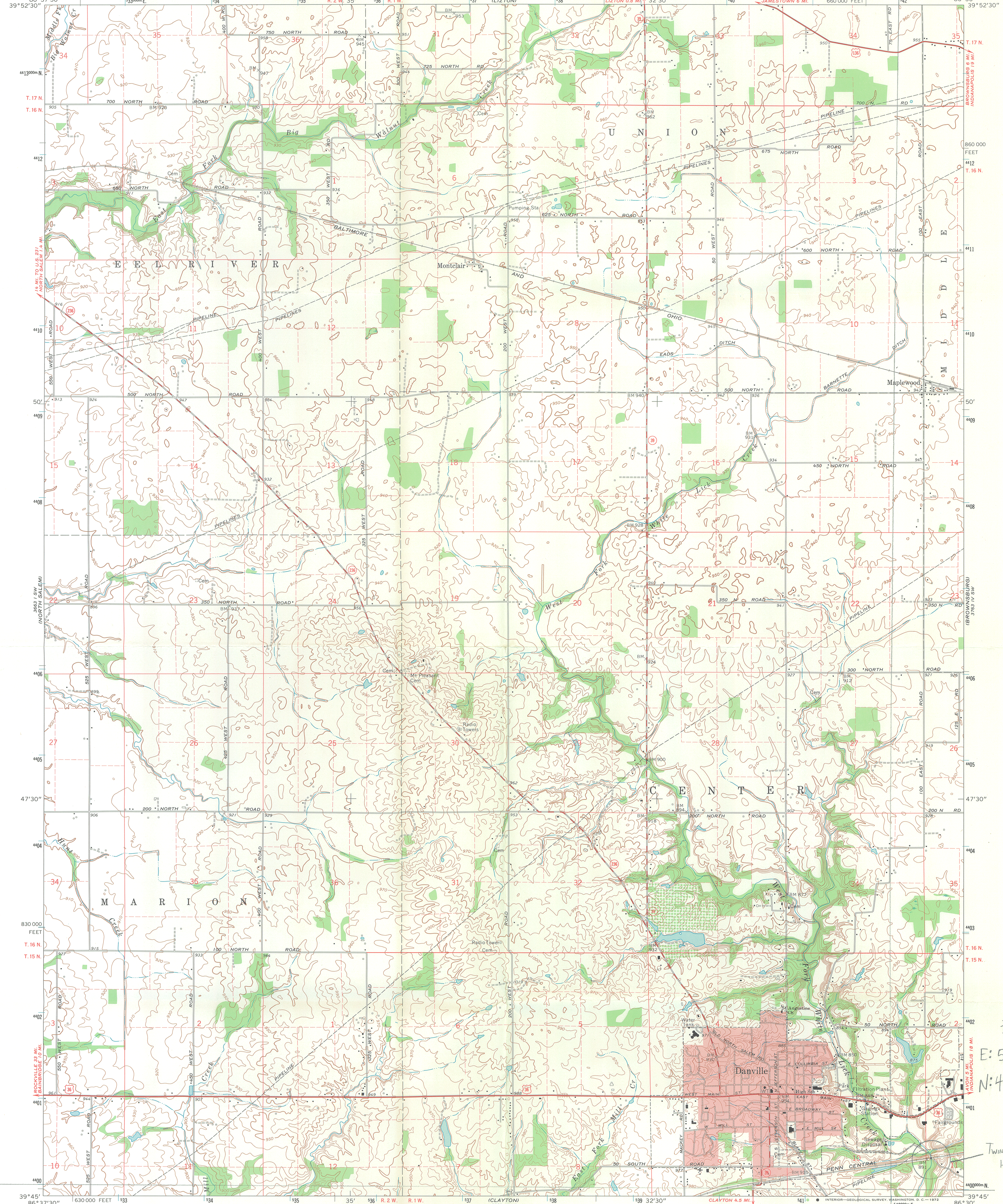
7. Photo # 13



1. Twin Bridges

2. Hendricks Co., Indiana

7. Photo # 14





Indiana Department of Natural Resources

Frank O'Bannon, Governor
Larry D. Macklin, Director

Division of Historic Preservation
and Archaeology
402 W. Washington Street, W274
Indianapolis, IN 46204-2748
PH: 317/232-1646
FAX: 317/232-0693
dhpa@dnr.state.in.us

January 27, 2000

Carol D. Shull
Keeper of the National Register
U.S. Department of the Interior
National Park Service
Cultural Resources
National Register of Historic Places
Mail Stop 2280, Suite 400
1849 C Street NW
Washington, D.C 20240

Dear Ms. Shull:

Enclosed is a National Register of Historic Places nomination for Twin Bridges in Hendricks County, Indiana.

The Indiana Historic Preservation Review Board reviewed the nomination and voted to recommend its inclusion in the National Register of Historic Places.

Very truly yours,

A handwritten signature in black ink, appearing to read "C. St." with a large, stylized initial "J" or "S" to the left.

Jon C. Smith
Director
Division of Historic Preservation
and Archaeology

JCS:PCD:pcd

Enclosure