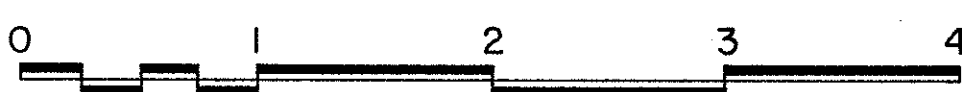
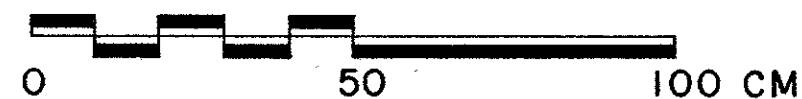
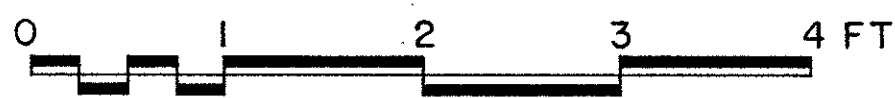


# HARDIN CITY BRIDGE STEAMBOAT ROCK, IOWA 1879



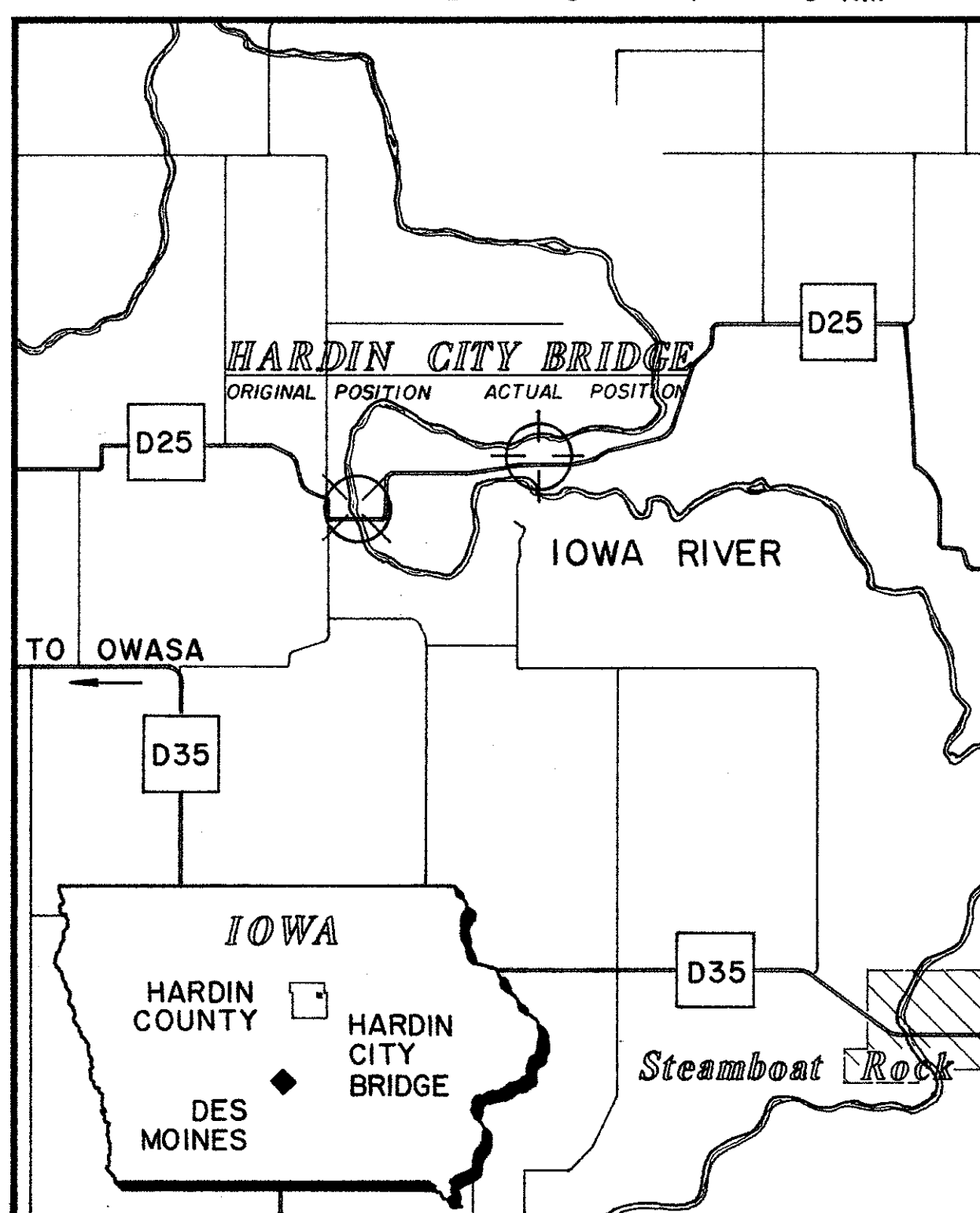
SCALE 1:50,000



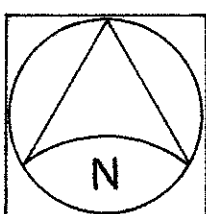
The Hardin City Bridge is a 10-panel wrought and cast-iron Whipple through truss, built in 1879 by Western Bridge Works of Fort Wayne, Indiana. It is one of only seven Whipple trusses remaining in Iowa. Developed by Squire Whipple, the Whipple truss is a variation of the Pratt where the diagonals extend across two panels, rather than one. The Whipple truss was a popular choice for long-span crossings between 1850 and 1890, most often used for spans over 150 feet. With its cast-iron hip blocks and bearing shoes and rolled wrought-iron components, the Hardin City Bridge typifies highway bridge construction in Iowa of the late 1870s.

Western Bridge Works was a short-lived bridge contracting company, founded in 1877 when C.L. Olds, owner of a Fort Wayne iron company, and Alpheus Wheelock, a former agent of the Toledo, Ohio based Smith Bridge Company, joined together their expertise. By 1879, Western Bridge was thriving, with contracts for over 5000 feet of bridges. The business quickly faded, however, and the company was sold in 1885.

The Hardin City Bridge carried traffic until its replacement in 1982. In 1989, the truss was moved from its original location spanning the Iowa River and re-erected beside a rural county road one mile from its original site.



### State & Location Maps



Based on U.S.G.S. 7.5 min. series topographic map, Owasa and Steamboat Rock quadrangles 1979  
UTM: 15.491149.4699400

The Iowa Historic Bridges Recording Project is part of the Historic American Engineering Record (HAER), a long-range program to document historically significant engineering, industrial, and maritime sites in the United States. The HAER program is administered by the National Park Service, U.S. Department of the Interior. The Iowa Historic Bridges Recording Project was co-sponsored during the summer of 1995 by HAER under the general direction of Dr. Robert J. Kapsch, Chief, and by the Iowa Department of Transportation, the State Historical Society of Iowa, Iowa Division Office of the Federal Highway Administration, the American Society of Civil Engineers (ASCE), and the Iowa Transportation Center.

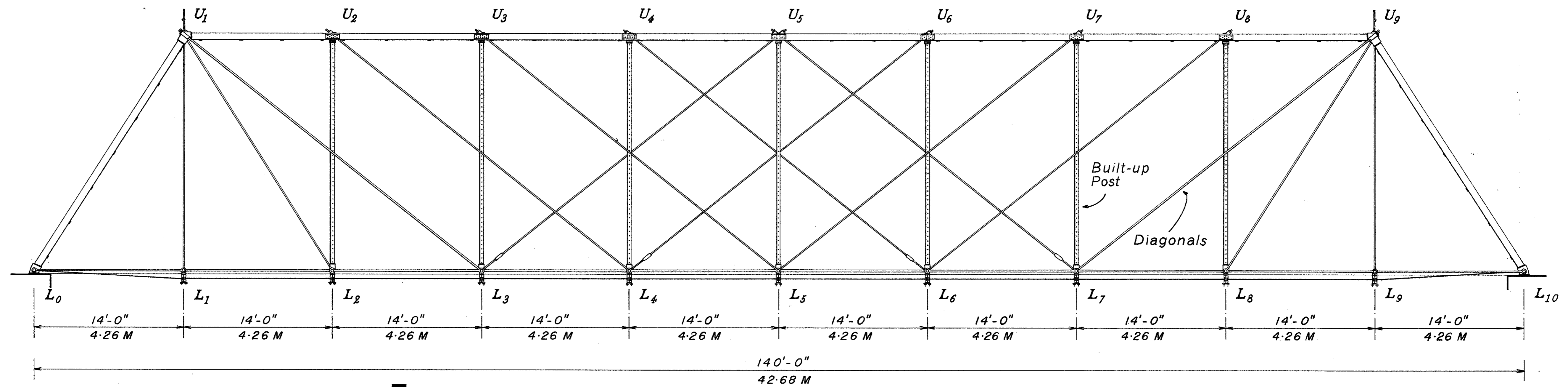
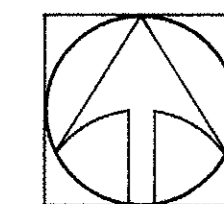
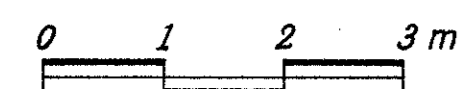
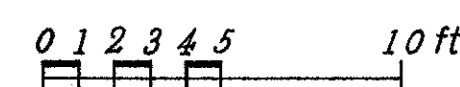
The field work, measured drawings, historical reports, and photographs were prepared under the direction of Eric DeLony, Chief of HAER. The team consisted of Caroline Schwyer, architectural supervisor (ICOMOS-France); Roger Chien (University of Virginia), Virginia Price (University of Kansas), Erick McEvoy (ICOMOS-Canada), and Adriaan Vlaardingerbroek (ICOMOS-The Netherlands), architects; Robert Jackson (University of Texas-Austin), and Leslie Pitner (University of Pennsylvania), historians; Geoffrey H. Goldberg (University of Massachusetts), and Juliet Landler (University of California-Berkeley), engineers; Joseph Elliot, Sellersville, PA, photographer; Clay Frasier, Loveland, CO, and James Hippen, Decorah, IA, consultants.

DELINEATED BY: Adriaan Vlaardingerbroek, 1995

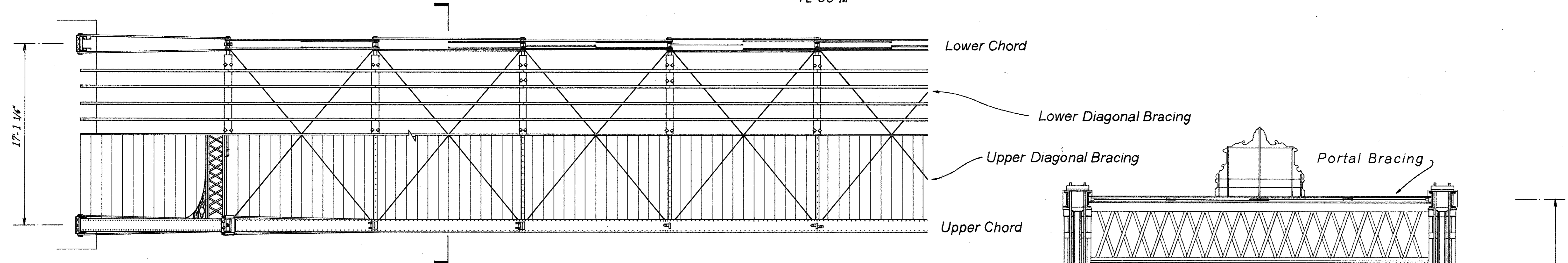
IOWA HISTORIC BRIDGES RECORDING PROJECT NATIONAL PARK SERVICE UNITED STATES DEPARTMENT OF THE INTERIOR	HARDIN CITY BRIDGE (1872) PEDESTRIAN PATH BESIDE COUNTY ROAD, 3.0 MILES NORTHWEST OF STEAMBOAT ROCK STEAMBOAT ROCK VICINITY HARDIN COUNTY IOWA	SHEET 1 OF 3	HISTORIC AMERICAN ENGINEERING RECORD IA-57
---	--	-----------------	--

### Elevation

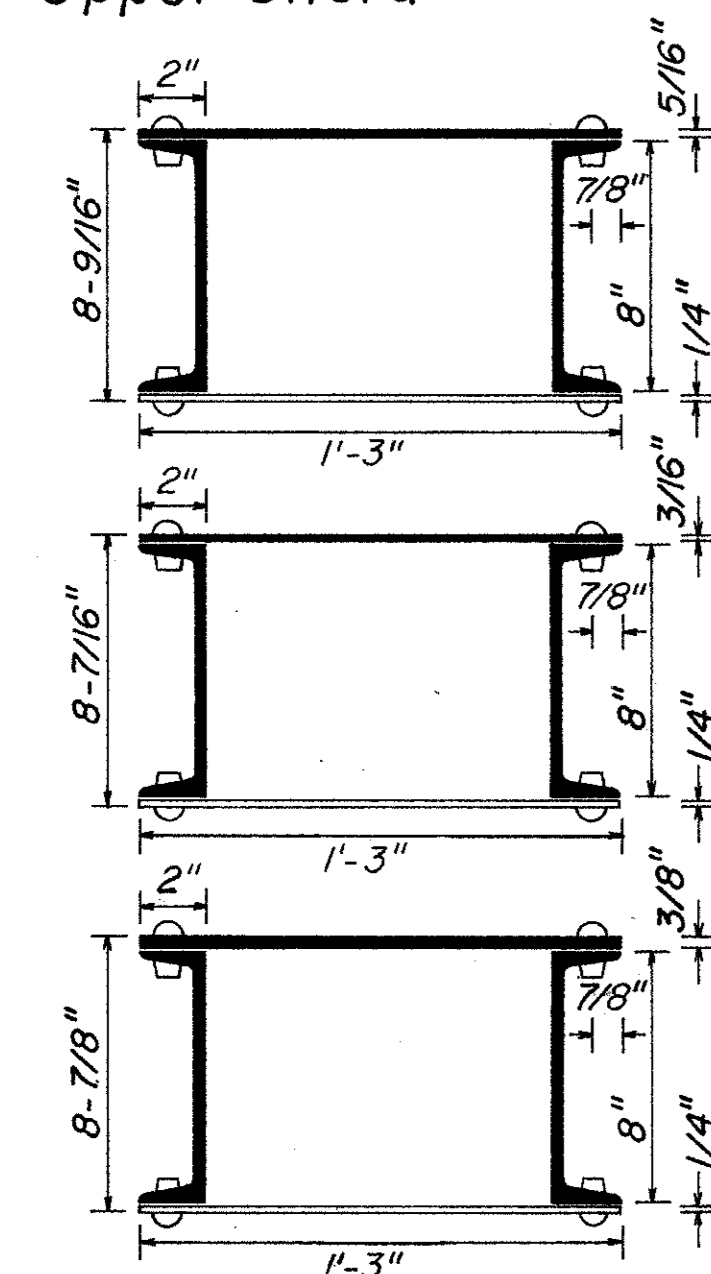
Scale: 3/16" = 1' - 0"



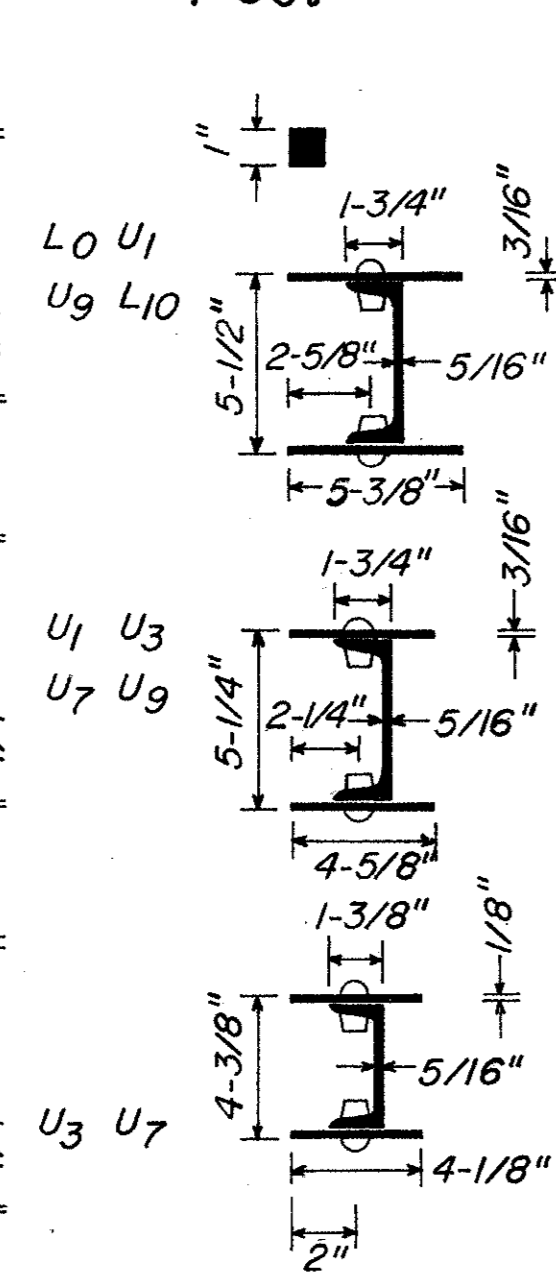
### Plan



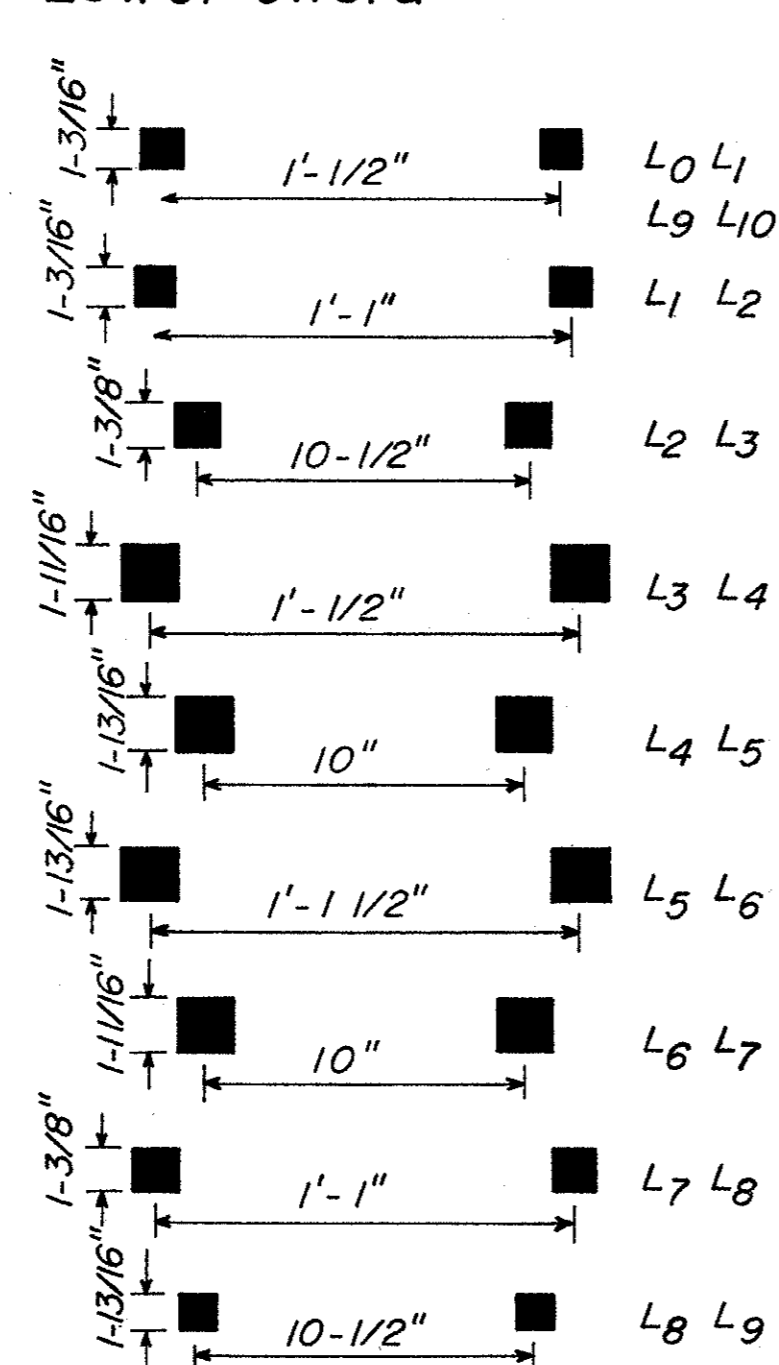
### Upper Chord



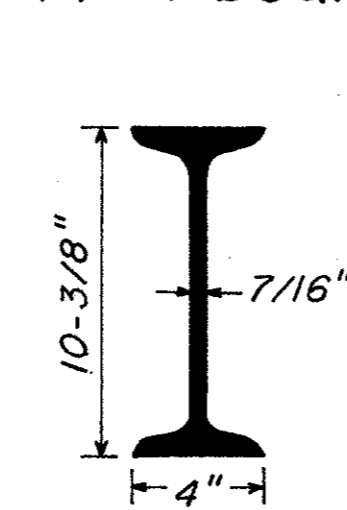
### Post



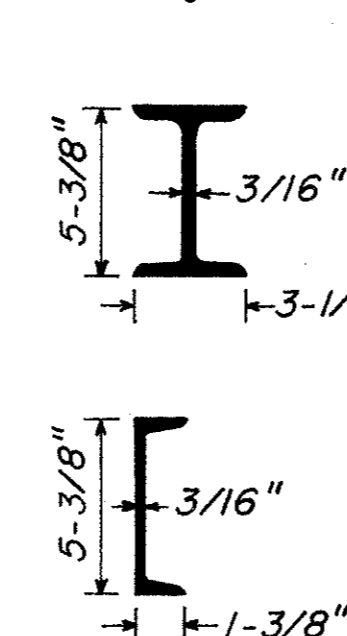
### Lower Chord



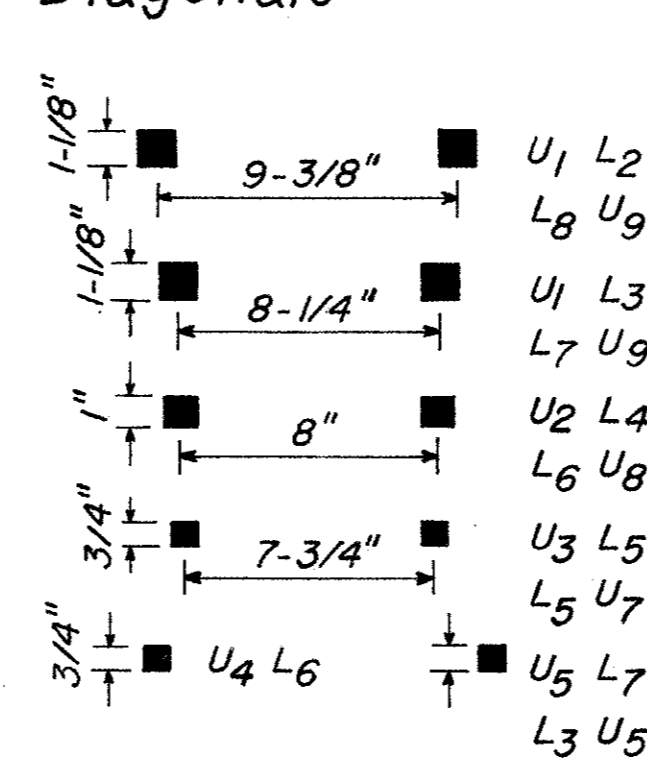
### Floor Beam



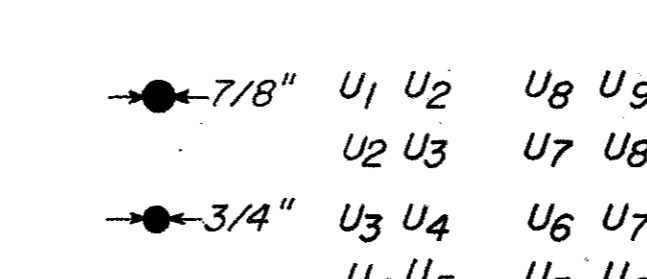
### Stringers



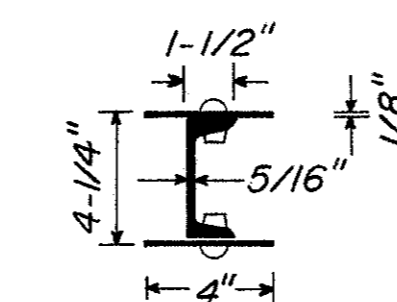
### Diagonals



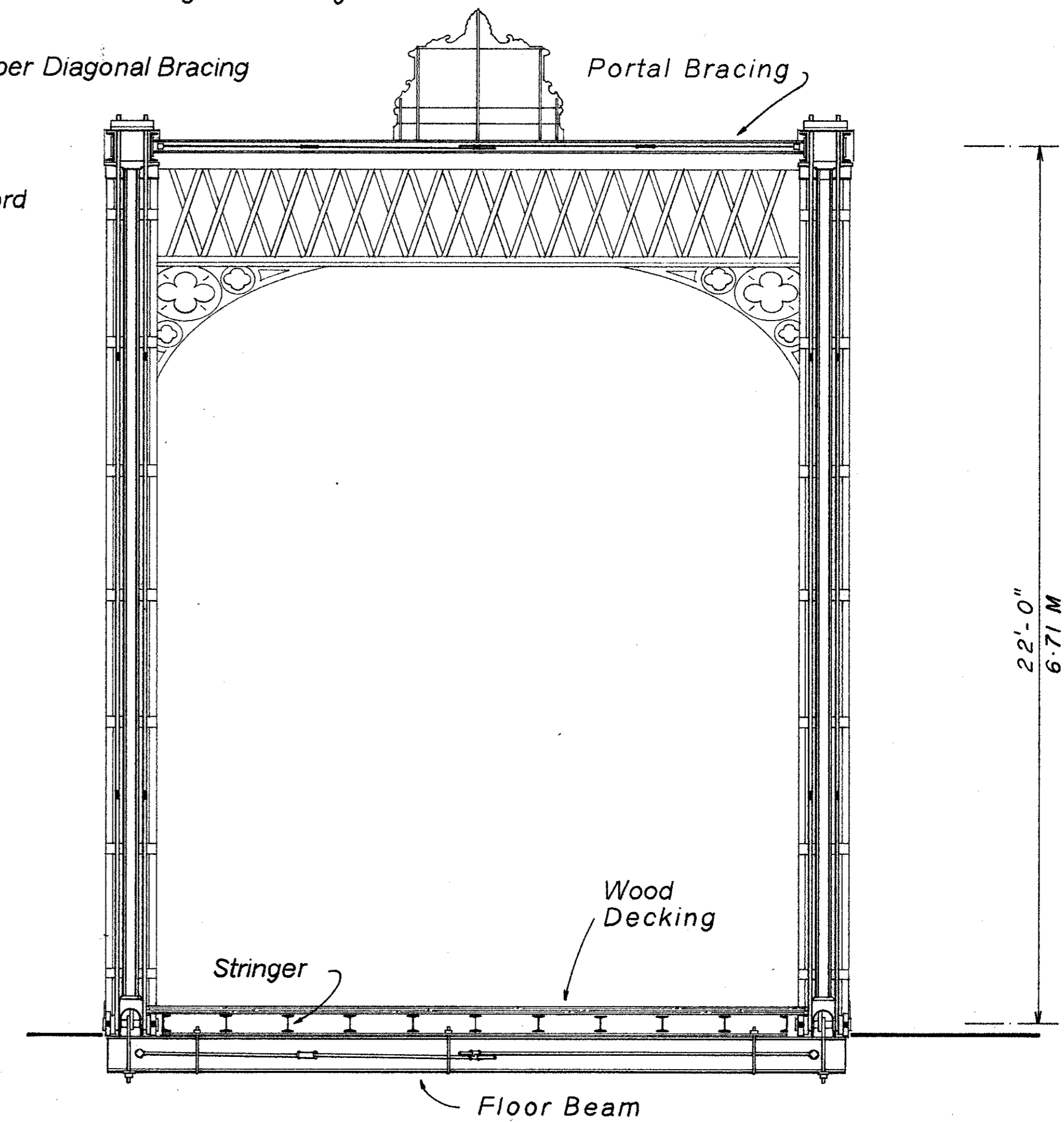
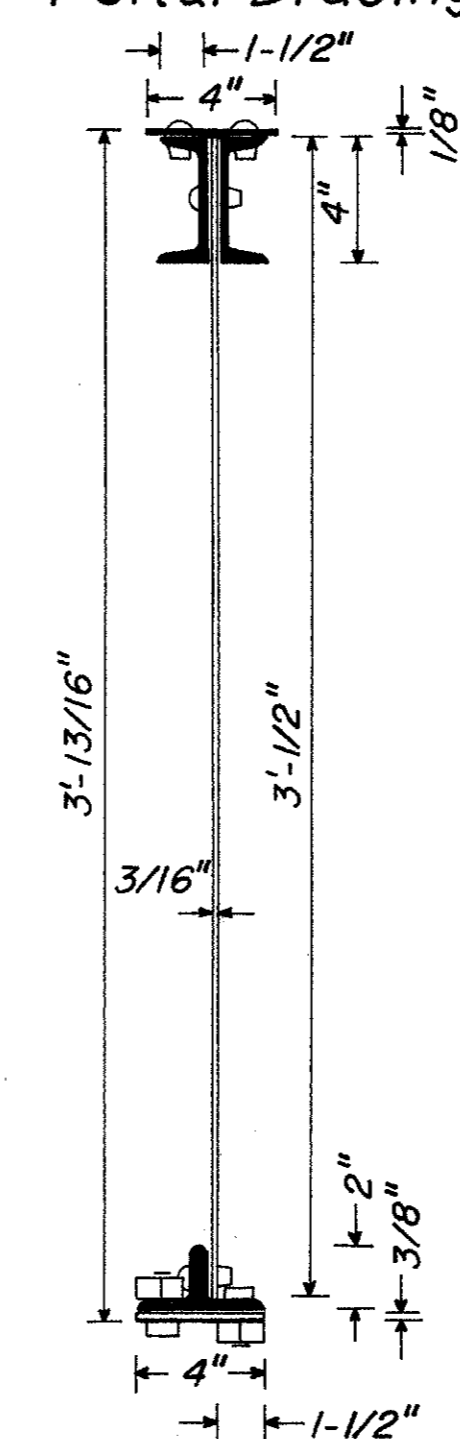
### Upper Diagonal Bracing



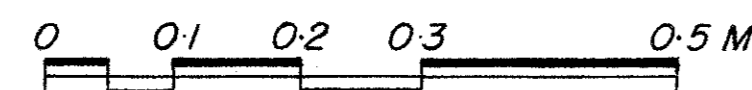
### Lateral Bracing



### Portal Bracing

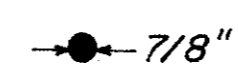


Scale: 2" = 1' - 0"



### Table of Member Sections

### Lower Diagonal Bracing



### Section

Scale: 3/8" = 1' - 0"

DELINEATED BY: Caroline Schweyer & Adriaan Vlaardingbroek, 1995

IOWA HISTORIC BRIDGES RECORDING PROJECT

PEDESTRIAN PATH BESIDE COUNTY ROAD, 3.0 MILES NORTHWEST OF STEAMBOAT ROCK, STEAMBOAT ROCK VICINITY, HARDIN COUNTY, IOWA

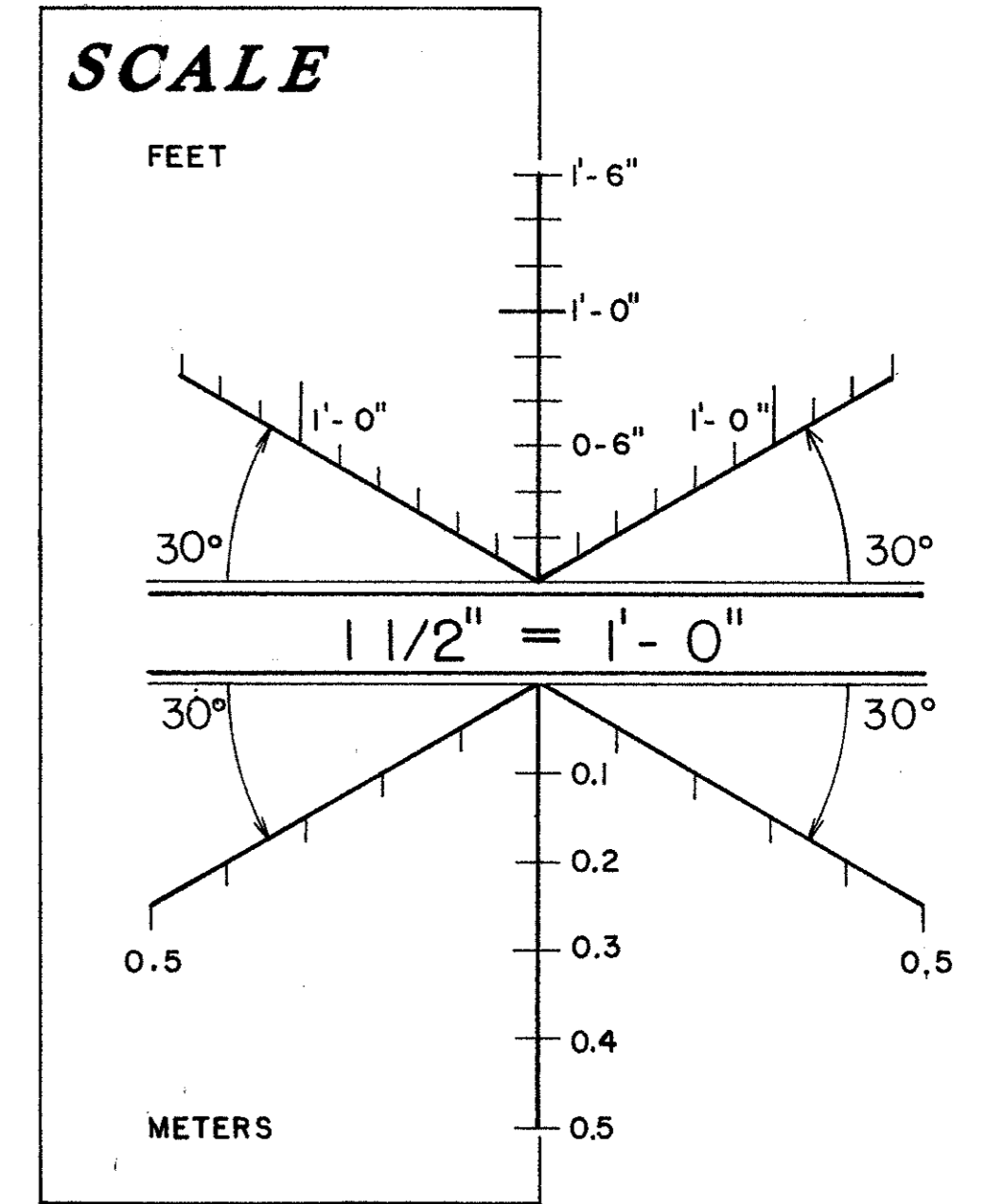
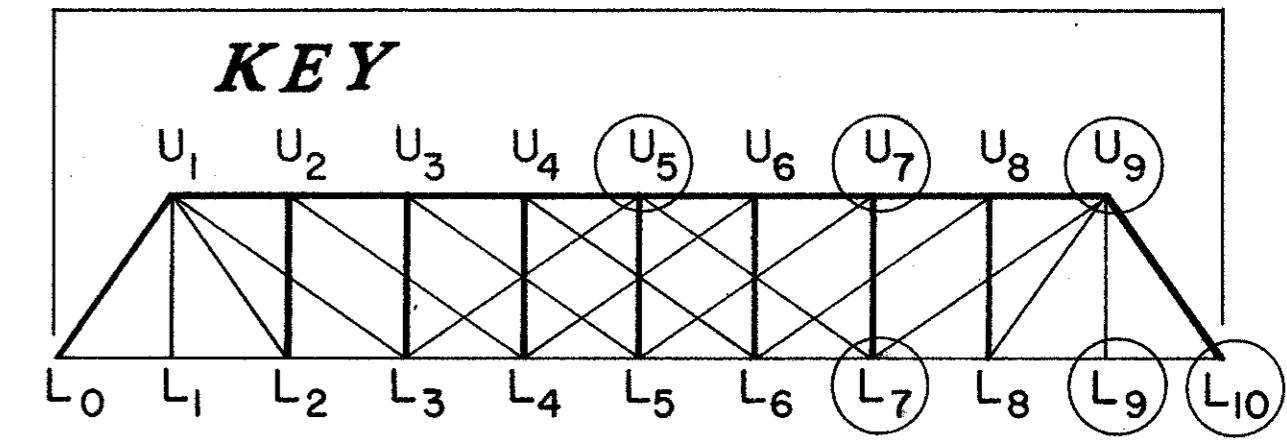
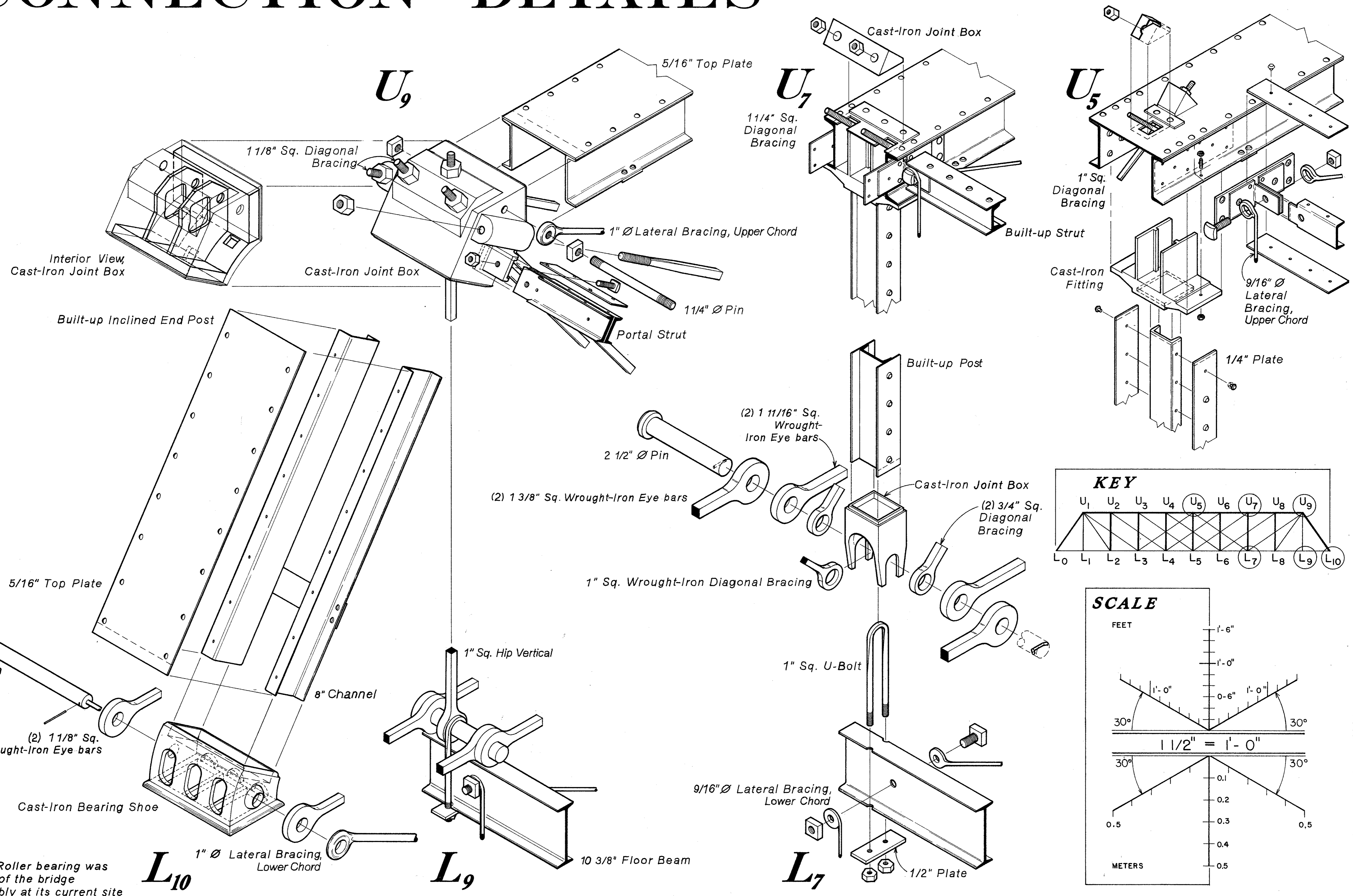
HISTORIC AMERICAN ENGINEERING RECORD IA-57

SHEET 2 of 3

IF REPRODUCED, PLEASE CREDIT: HISTORIC AMERICAN ENGINEERING RECORD, NATIONAL PARK SERVICE, NAME OF DELINEATOR, DATE OF THE DRAWING

# CONNECTION DETAILS

TRIM LINE



NOTE: Roller bearing was not part of the bridge reassembly at its current site

DELINEATED BY: Virginia M. Price, 1995  
 IOWA HISTORIC BRIDGES RECORDING PROJECT  
 UNITED STATES DEPARTMENT OF THE INTERIOR  
 PEDESTRIAN PATH BESIDE COUNTY ROAD, 3.0 MILES NORTHWEST OF STEAMBOAT ROCK  
 STEAMBOAT ROCK VICINITY  
 HARDIN COUNTY  
 IOWA  
 SHEET 3 of 3  
 HISTORIC AMERICAN ENGINEERING RECORD  
 IA-57  
 IF REPRODUCED, PLEASE CREDIT: HISTORIC AMERICAN ENGINEERING RECORD, NATIONAL PARK SERVICE, NAME OF DELINEATOR, DATE OF THE DRAWING

TRIM LINE