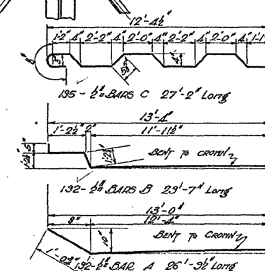
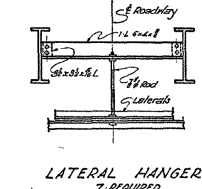
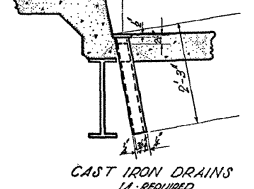
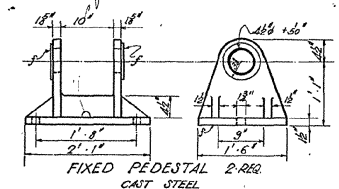
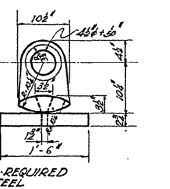
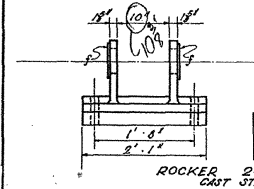
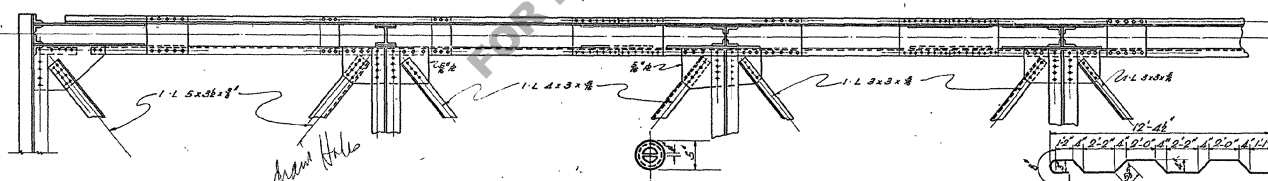
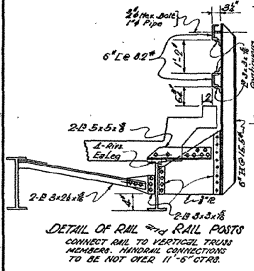
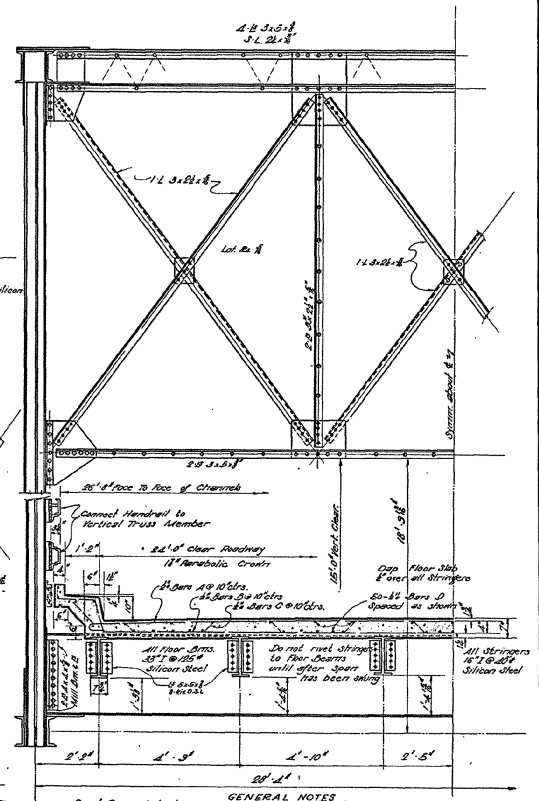
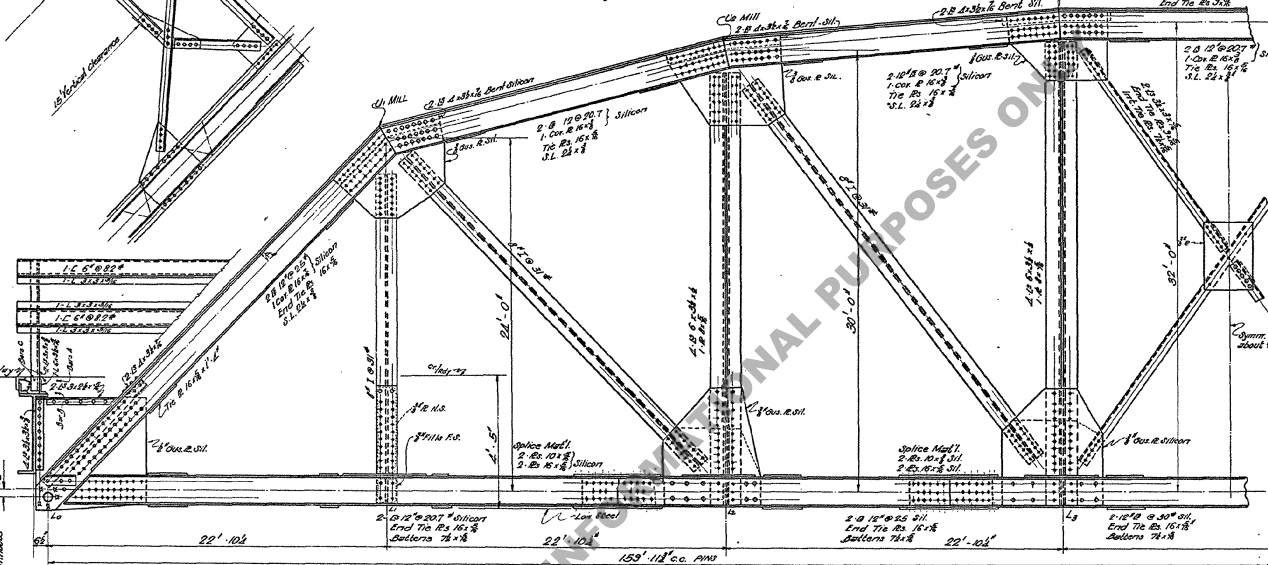
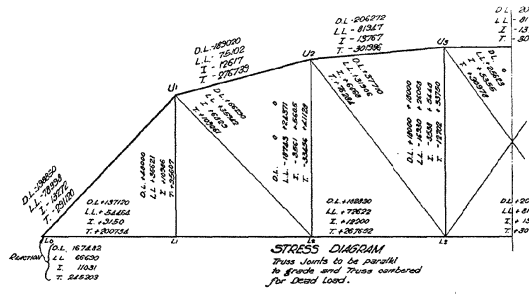
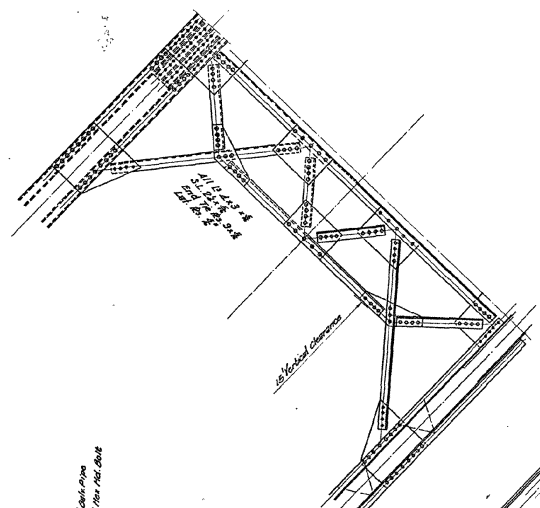


STATE	PROJECT	ANALYST	SHEET
			15



**GENERAL NOTES**  
Design Speed: Latest approved La. Hwy. Dept. Spcs.  
Design Speed: Louisiana Highway Comm. 1933. Live Load: H-15. Dead Load: Calculated weight of steel and concrete plus 15# per square foot of roadway surface allowed for future wearing surface. Drive 10# and spare tires 10# except in temporary and storage of 20#. Ends of floor beams to be drilled after connection angles have been riveted in place. Straps to be drilled as they floor beams are brought after spurs has been swung. Straps not to be riveted to floor beams until after spurs has been swung. Cast steel shoes to be used for structural carbon steel out of cast iron drains and all expansion and contraction joints. Material to be carbon structural steel unless noted. Floor slab and curbs to be class A concrete.

ESTIMATED QUANTITIES	
STRUCT. STEEL (CARBON)	65,800 -- 4,111.0
STEEL (SILICON)	21,000 -- 1,180.0
REINFORCING STEEL	20,500 ROUNDS
CLASS A-4 CONCRETE	39,16 cu yds

**STANDARD PLAN**  
160 RIVETED TRUSS SPAN  
24'0" CLEAR ROADWAY  
7" CONCRETE FLOOR

LOUISIANA HIGHWAY COMMISSION  
BATON ROUGE, LA. 70802  
1937

1-42	See Notes 2nd Part No.	DESIGNED	Checked	TRACED
1-111	See Notes 1st Part No.	CHECKED	Checked	CHECKED
DATE	DESCRIPTION	BY	BY	BY
	REVISIONS			