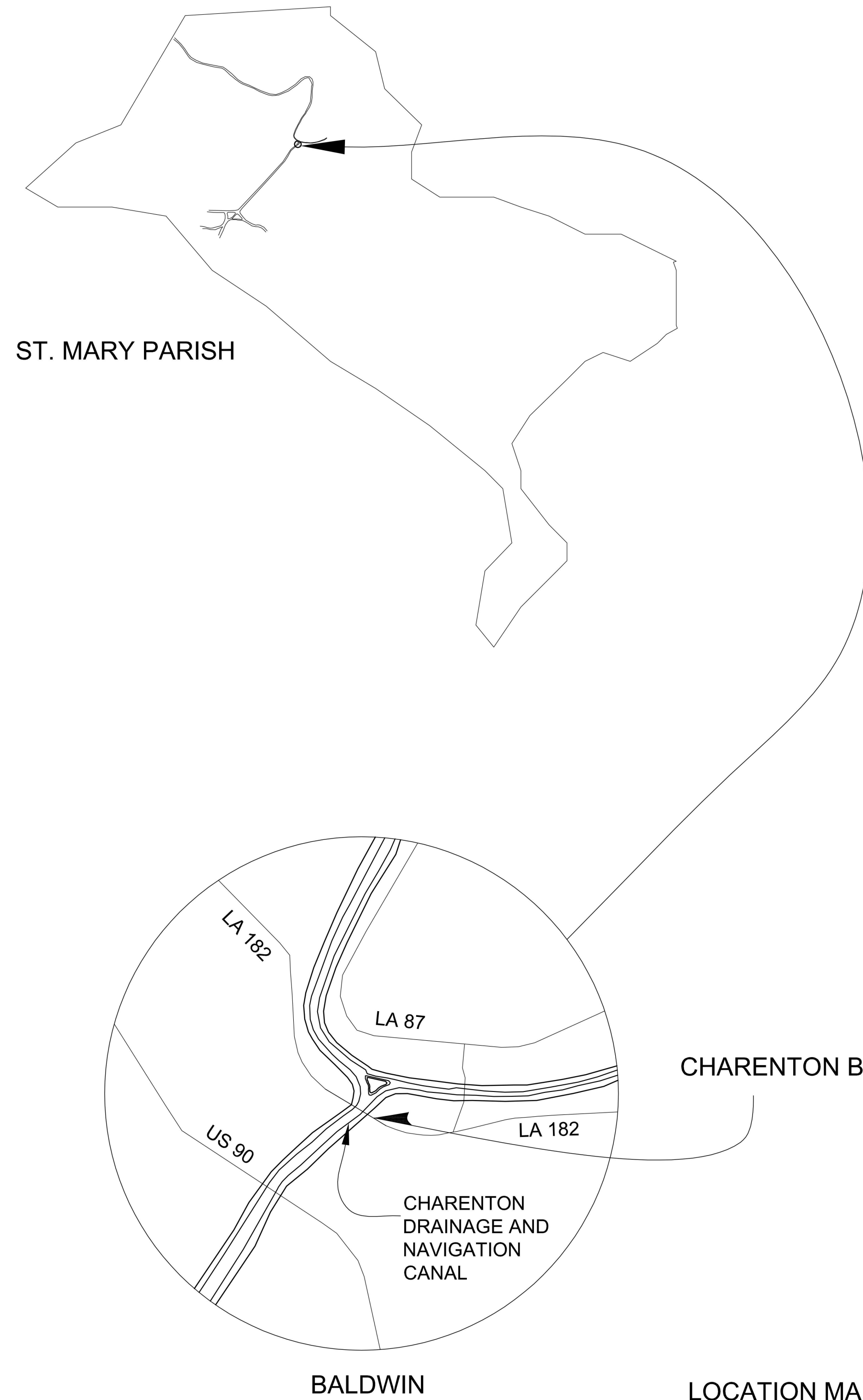
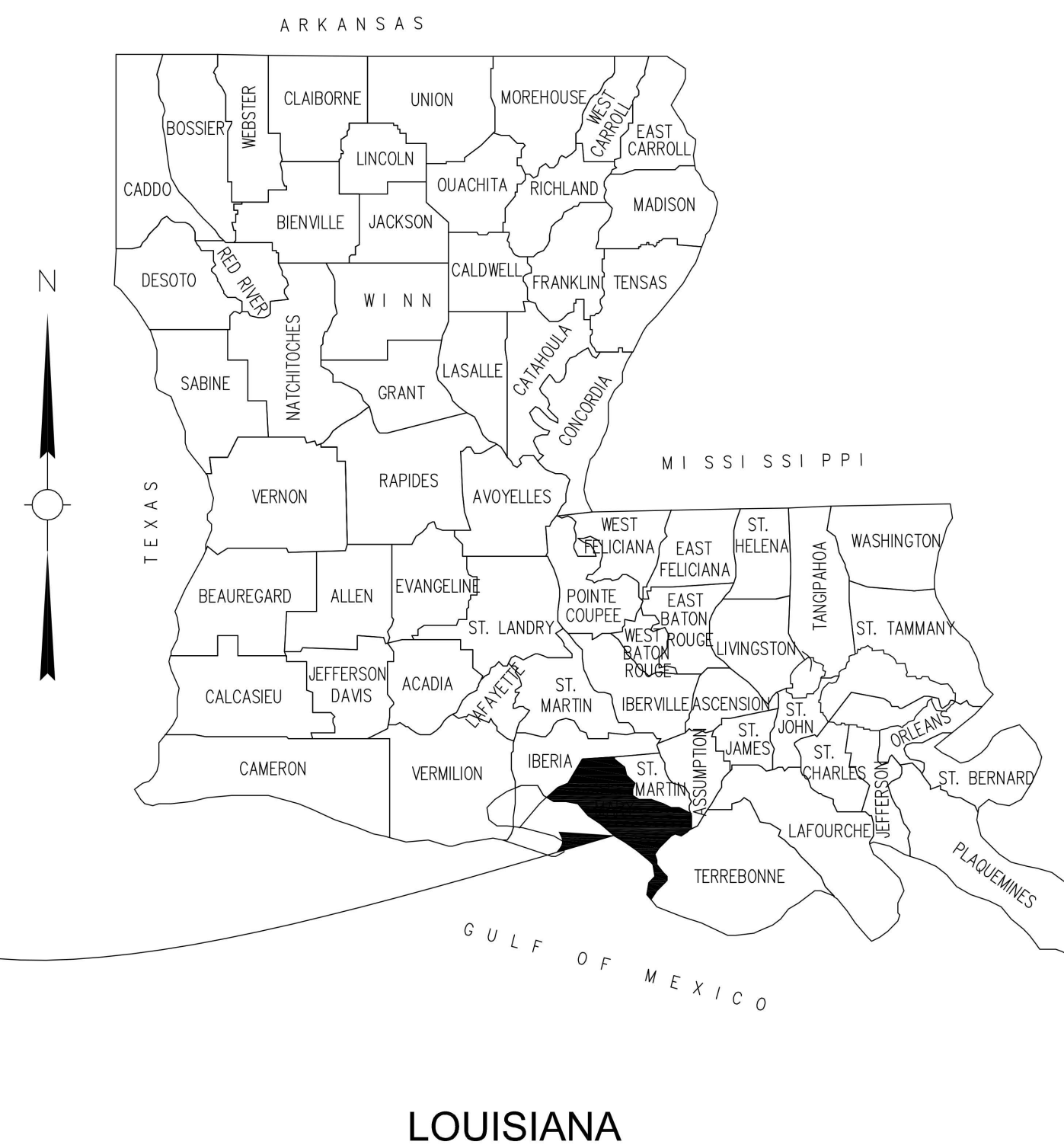


# CHARENTON BRIDGE



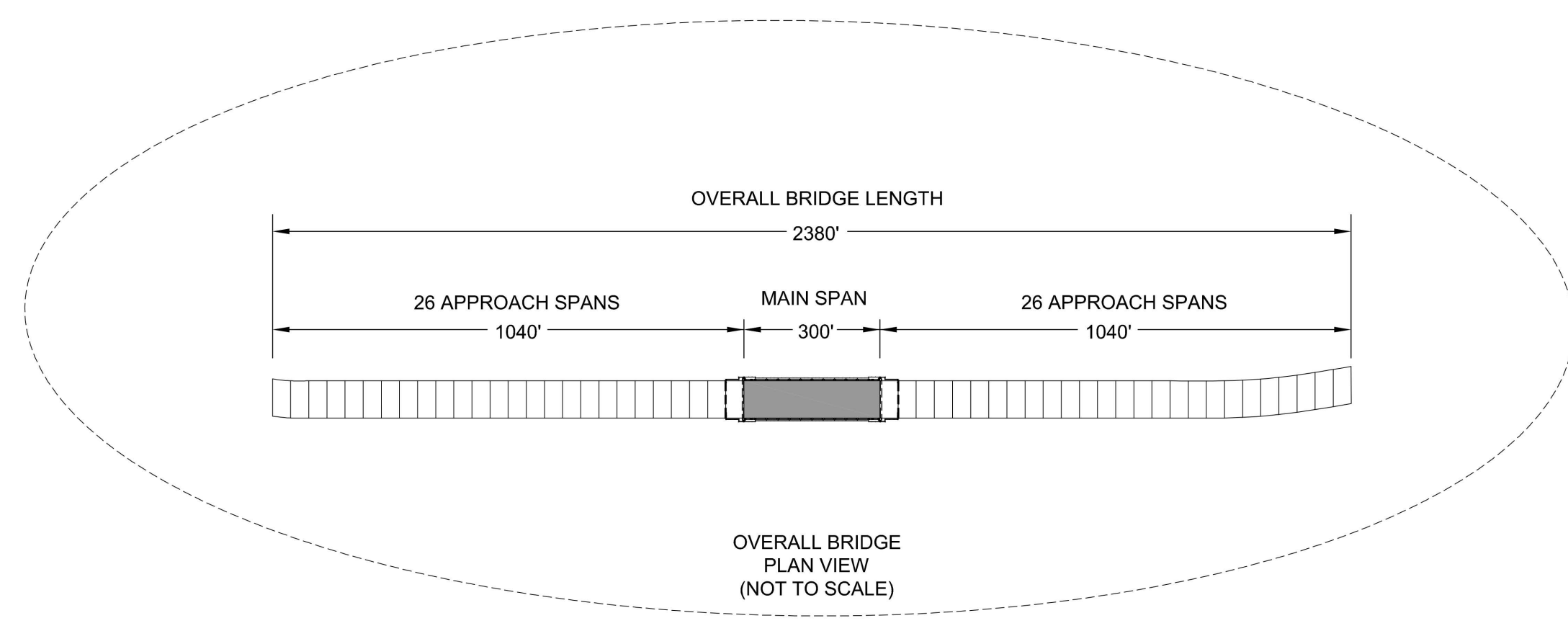
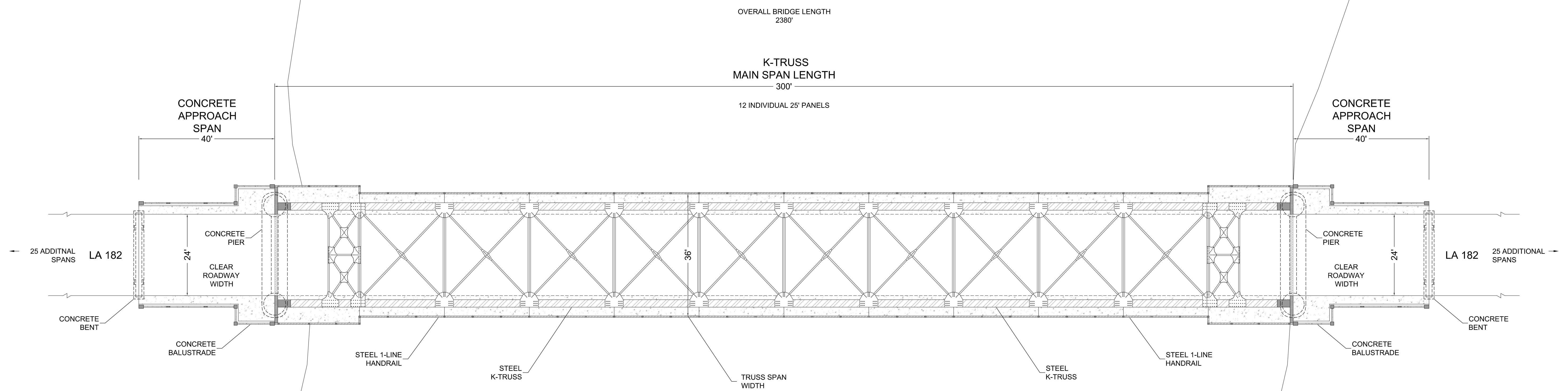
LOCATION MAP  
 Latitude: 29.825298 North  
 Longitude: -91.537959 West



The Charenton Bridge (Bridge Recall No. 008970), designed by Louisiana Highway Commission and completed in 1941, is significant as an important example of a distinctive truss type. The bridge's significant design feature is its K-truss configuration, characterized by the arrangement of vertical and diagonal members to form a "K" in each truss panel. The K-truss is a rare variation both nationally and in Louisiana, where there are only three extant examples of the bridge type. The Charenton Bridge was determined eligible for listing in the National Register of Historic Places in 2013 under Criterion C: Engineering at the state level of significance.

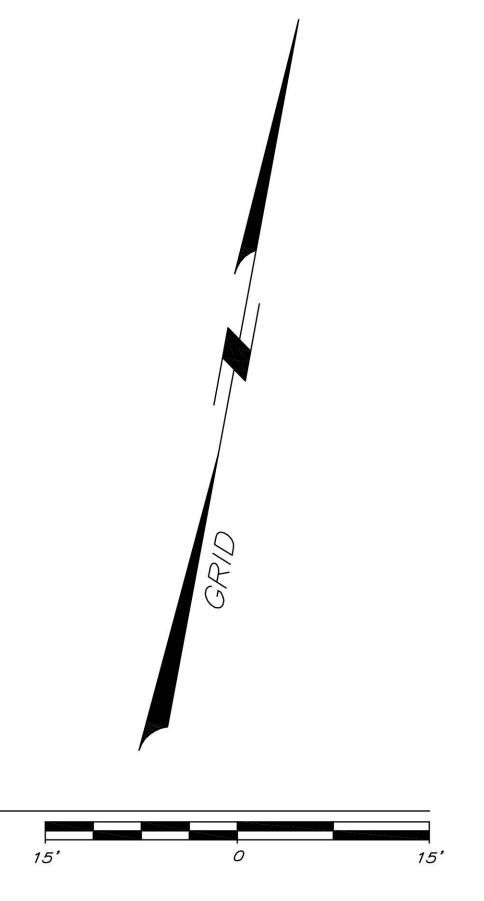
This documentation was prepared to fulfill Stipulation IX.5 of the Programmatic Agreement Among the Federal Highway Administration, the Louisiana Department of Transportation and Development, the Advisory Council on Historic Preservation, and the Louisiana State Historic Preservation Officer Regarding Management of Historic Bridges in Louisiana, dated August 18, 2015 and executed September 21, 2015. The Louisiana Department of Transportation and Development (LADOTD) retained Mead & Hunt to prepare this document. It was prepared by Angela Hronek and Robert M. Frame, Cultural Resource Specialists, of Mead & Hunt, Stephen V. Estopinal, P.E., P.L.S. and Trenton Iglehart, Geodetic Analyst, of SJB Group, LLC. Dietrich Floeter completed the photography.

These measured drawings were prepared based on a site visit to complete laser scanning of the bridge, with selective hand measuring in the field to verify measurements.



CHARENTON DRAINAGE AND NAVIGATION CANAL  
 FLOW

PLAN VIEW



DELINEATED BY: T. IGLEHART, SUB GROUP, LLC., 2017

LOUISIANA HISTORIC BRIDGE INVENTORY NATIONAL PARK SERVICE UNITED STATES DEPARTMENT OF THE INTERIOR

BALDWIN

CARRIES LOUISIANA HIGHWAY 182 (LA 182) OVER CHARENTON DRAINAGE AND NAVIGATION CANAL ST. MARY PARISH

LOUISIANA

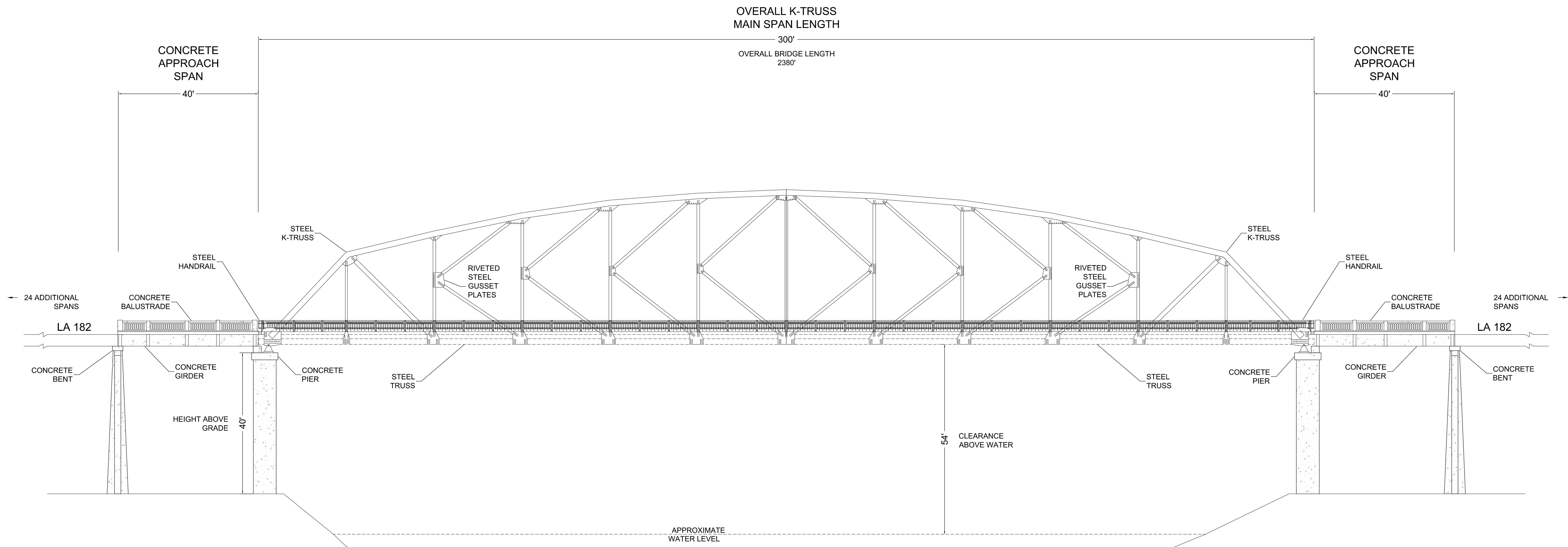
SHEET 2 OF 4

HISTORIC AMERICAN ENGINEERING RECORD

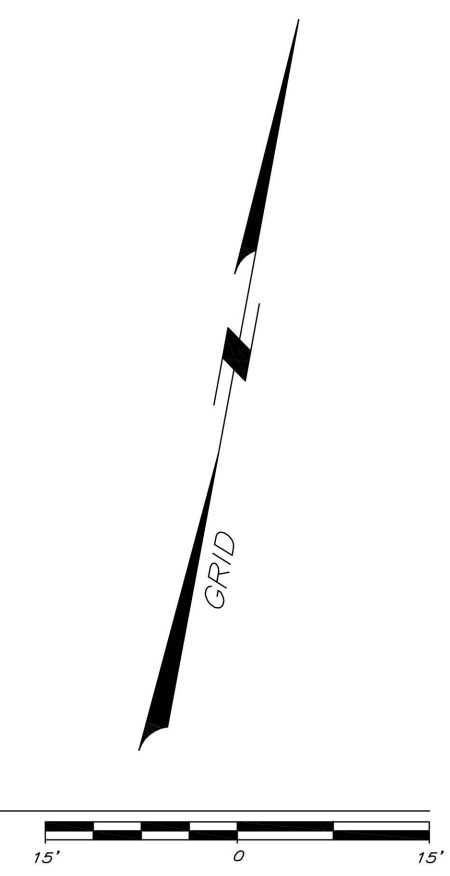
LA-43

LIBRARY OF CONGRESS INDEX NUMBER

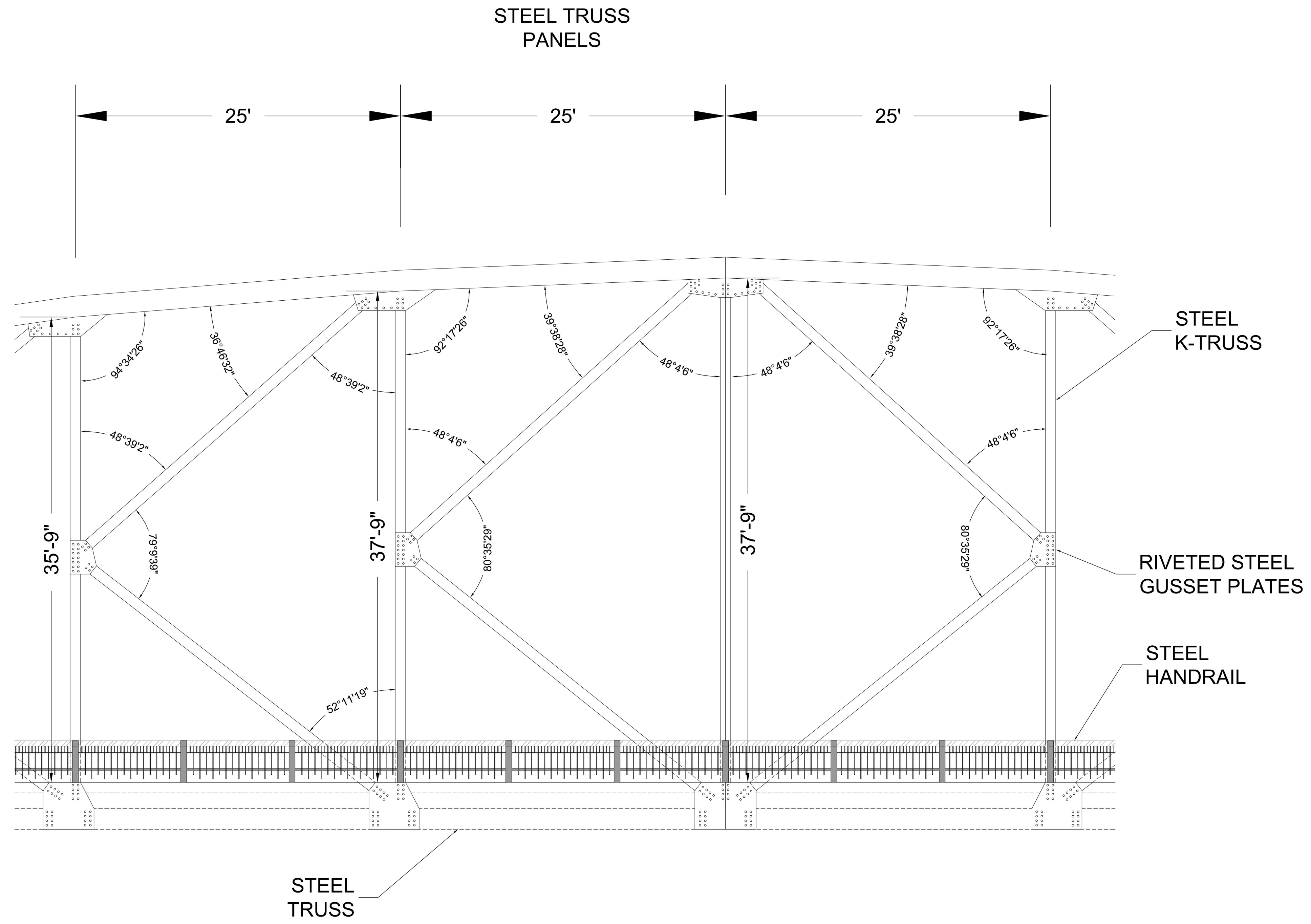
IF REPRODUCED PLEASE CREDIT THE HISTORIC AMERICAN ENGINEERING RECORD, NATIONAL PARK SERVICE, NAME OF DELINEATOR, DATE OF DRAWING



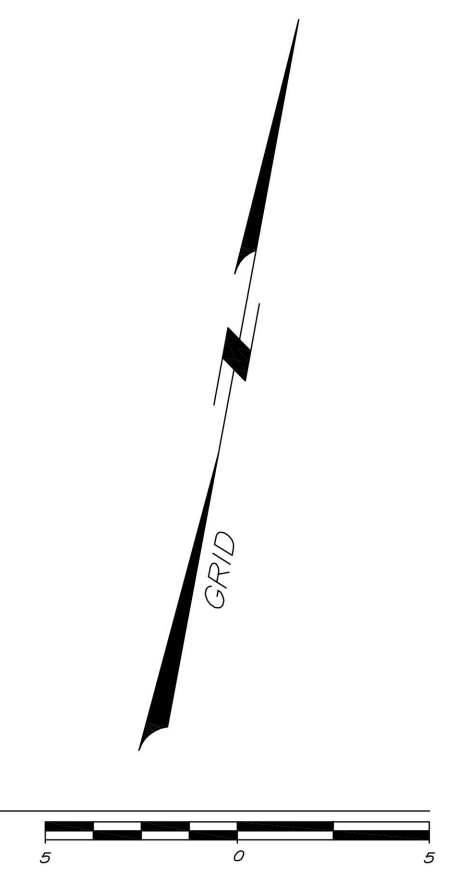
ELEVATION VIEW



IF REPRODUCED PLEASE CREDIT THE HISTORIC AMERICAN ENGINEERING RECORD, NATIONAL PARK SERVICE, NAME OF DELINEATOR, DATE OF DRAWING



ELEVATION VIEW



DELINEATED BY: T. IGLEHART, SUB GROUP, LLC., 2017

LOUISIANA HISTORIC  
BRIDGE INVENTORY  
NATIONAL PARK SERVICE  
UNITED STATES DEPARTMENT OF THE INTERIOR

BALDWIN

CARRIES LOUISIANA HIGHWAY 182 (LA 182) OVER CHARENTON DRAINAGE AND NAVIGATION CANAL  
ST. MARY PARISH

LOUISIANA

SHEET  
4 OF 4

HISTORIC AMERICAN  
ENGINEERING RECORD  
LA-43

LIBRARY OF CONGRESS  
INDEX NUMBER

IF REPRODUCED PLEASE CREDIT THE HISTORIC AMERICAN ENGINEERING RECORD, NATIONAL PARK SERVICE, NAME OF DELINEATOR, DATE OF DRAWING