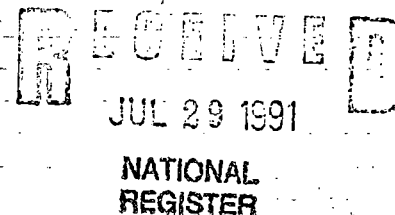


1152

United States Department of the Interior
National Park ServiceNational Register of Historic Places
Registration Form

This form is for use in nominating or requesting determinations of eligibility for individual properties or districts. See instructions in *Guidelines for Completing National Register Forms* (National Register Bulletin 16). Complete each item by marking "x" in the appropriate box or by entering the requested information. If an item does not apply to the property being documented, enter "N/A" for "not applicable." For functions, styles, materials, and areas of significance, enter only the categories and subcategories listed in the instructions. For additional space use continuation sheets (Form 10-900a). Type all entries.

1. Name of Property

historic name Southwest Reef Lighthouse

other names/site number

2. Location

street & number Bellevue Front St. and Canton St.

N/A not for publication

city, town Berwick

N/A vicinity

state Louisiana code LA county St. Mary

code 101 zip code 70342

3. Classification

Ownership of Property

- ☐ private
☒ public-local
☐ public-State
☐ public-Federal

Category of Property

- ☐ building(s)
☐ district
☐ site
☒ structure
☐ object

Number of Resources within Property

Contributing	Noncontributing
	buildings
	sites
1	structures
	objects
1	0
	Total

Name of related multiple property listing:

N/A

Number of contributing resources previously listed in the National Register 0

4. State/Federal Agency Certification

As the designated authority under the National Historic Preservation Act of 1966, as amended, I hereby certify that this ☒ nomination ☐ request for determination of eligibility meets the documentation standards for registering properties in the National Register of Historic Places and meets the procedural and professional requirements set forth in 36 CFR Part 60. In my opinion, the property ☒ meets ☐ does not meet the National Register criteria. ☐ See continuation sheet.

Leslie P. Tassin

July 29, 1991

Signature of certifying official Leslie P. Tassin, State Historic Preservation Officer, Dept. of Culture, Recreation & Tourism

Date

State or Federal agency and bureau

In my opinion, the property ☐ meets ☐ does not meet the National Register criteria. ☐ See continuation sheet.

Signature of commenting or other official

Date

State or Federal agency and bureau

5. National Park Service Certification

I, hereby, certify that this property is:

- ☒ entered in the National Register.
☐ See continuation sheet.
☐ determined eligible for the National Register. ☐ See continuation sheet.
☐ determined not eligible for the National Register.
☐ removed from the National Register.
☐ other, (explain:)

Patrick Andrews

9/12/91

for Signature of the Keeper

Date of Action

6. Function or Use

Historic Functions (enter categories from instructions)

TRANSPORTATION/water-related

Current Functions (enter categories from instructions)

VACANT/not in use

7. Description

Architectural Classification

(enter categories from instructions)

Exotic Revival (Egyptian Revival)

Materials (enter categories from instructions)

foundation cast-iron

walls iron

roof iron

other

Describe present and historic physical appearance.

The Southwest Reef Lighthouse (1858) is a three story iron tower on a platform located in Berwick adjacent to Berwick Bay, which is actually part of the Atchafalaya River (see USGS map). The tower is in the Egyptian Revival style. Despite a move and the fact that part of its platform is detached, the structure retains its National Register eligibility under Criterion C.

Southwest Reef was built as a fourth order light in the Gulf of Mexico approximately fifteen nautical miles off the coast of St. Mary Parish. It was elevated ten feet above the water surface on a platform with cast-iron screw-pile legs. In 1987, the lighthouse was moved about twenty-two nautical miles to Berwick in St. Mary Parish. It remained in a warehouse until April of 1991, when it was moved to its present location.

The move was necessary to save the lighthouse. It had been abandoned by the Coast Guard and would certainly have fallen victim to one storm or another within a few years. It was essential to move the lighthouse to a place where it could be maintained and protected. The tower was moved intact, with only the platform having to be reassembled. The tower is the same distance off the ground as it was off the water. (The platform was cut off at water level.) A complete restoration of the structure is slated to occur over the next year or two. It will be part of a maritime museum facility proposed by the City of Berwick.

Southwest Reef's tapering iron tower resembles an Egyptian Revival pylon. This Egyptian appearance is enhanced by a massive cove cornice surmounting the third story. The exterior is sheathed in iron panels which are fastened by multiple rows of rivets. Each story is lit by openings cut into the sloping sides of the structure. (The window frames themselves are presently in storage.) Fastened to the first story is a pair of davit cranes which were used for hoisting dinghies out of the water. These davits appear on an 1858 rendering of the lighthouse. The third story is surmounted by an iron railing with lozenge shapes forming the balustrade. This design was originally intended for the railing around the platform as well, but the present platform railing is of a simpler design. It is not known when this railing was installed, but it is known to have existed as of 1915. The original cupola and lens are missing as are a few portions of the rooftop balustrade and some of the platform balustrade. Also, at present the side section of the platform (which originally had nothing built upon it) is on site about 40 feet from the lighthouse tower. Although it has been re-assembled, it has not yet been moved up and attached to the main platform (see photo #2).

☒ See continuation sheet

**United States Department of the Interior
National Park Service**

**National Register of Historic Places
Continuation Sheet**

SOUTHWEST REEF LIGHTHOUSE, BERWICK, ST. MARY PARISH, LA

Section number 7 Page 1

Despite the foregoing, Southwest Reef still strongly conveys its historic identity as a lighthouse and its Egyptian Revival architectural character. It easily portrays its architectural significance as a utilitarian building styled in the Eyyptian Revival mode. None of the changes involve architecturally significant elements. Although the side platform has not yet been attached, Southwest Reef is still obviously a lighthouse in the Egyptian Revival style. The character-defining elements, the pylon tower, the huge cove cornice and the molding capping the first story, are all intact.

8. Statement of Significance

Certifying official has considered the significance of this property in relation to other properties:

☐ nationally ☒ statewide ☐ locally

Applicable National Register Criteria ☐ A ☐ B ☒ C ☐ D

Criteria Considerations (Exceptions) ☐ A ☒ B ☐ C ☐ D ☐ E ☐ F ☐ G

Areas of Significance (enter categories from instructions)
architecture

Period of Significance
1858

Significant Dates
1858

Cultural Affiliation
N/A

Significant Person
N/A

Architect/Builder
unknown

State significance of property, and justify criteria, criteria considerations, and areas and periods of significance noted above.

The Southwest Reef Lighthouse is of regional and state significance under Criterion C because of its unusual Egyptian Revival styling.

The lighthouse is of regional significance as an important example of a type. According to the Coast Guard inventory, its Egyptian pylon looking design is unique among lighthouses of the Gulf Coast region, most of the others being round brick towers. It had a post-Civil War twin, the Calcasieu River Light, but this has since been dynamited, leaving Southwest Reef as the sole example. It survives to illustrate how the wide range of revival styles popular in the mid-nineteenth century was adapted for functional structures such as lighthouses.

The lighthouse is of state significance as a rare example of the Egyptian Revival taste within Louisiana. Of course, the Egyptian Revival was never as popular as the other less exotic revival styles (for example, Gothic Revival). Louisiana's examples are confined to above ground tombs with the exception of the badly mutilated old Jefferson Parish Courthouse, papyrus leaf capitals on the U. S. Custom House, and the Southwest Reef Lighthouse. In one respect the lighthouse is more significant than any of the others, being a far more unusual use of the style. In this it exemplifies the eclecticism endemic to mid-nineteenth century American architecture.

☐ See continuation sheet

9. Major Bibliographical References

Holland, Francis Ross, Jr. America's Lighthouses: Their Illustrated History Since 1716.
Brattleboro, Vermont: The Stephen Green Press, 1972.

United States Coast Guard. Lighthouses and Lightships of the Northern Gulf of Mexico.
This is an inventory of lighthouses with text and photos. No publication date given.

☐ See continuation sheet

Previous documentation on file (NPS):

- ☐ preliminary determination of individual listing (36 CFR 67)
has been requested
- ☐ previously listed in the National Register
- ☒ previously determined eligible by the National Register (see
designated a National Historic Landmark attached letter)
- ☐ recorded by Historic American Buildings
Survey # _____
- ☐ recorded by Historic American Engineering
Record # _____

Primary location of additional data:

- ☒ State historic preservation office
- ☐ Other State agency
- ☐ Federal agency
- ☐ Local government
- ☐ University
- ☐ Other

Specify repository: _____

10. Geographical Data

Acres of property _____ less than 1 acre

UTM References

A

1	5
---	---

6	7	2	5	8	0
---	---	---	---	---	---

3	2	8	6	0	0	0
---	---	---	---	---	---	---

Zone Easting Northing

C

--	--

--	--	--	--

--	--	--	--	--	--

B

--	--

--	--	--	--

--	--	--	--	--	--

Zone Easting Northing

D

--	--

--	--	--	--

--	--	--	--	--	--

☐ See continuation sheet

Verbal Boundary Description Please refer to enclosed sketch map.

☐ See continuation sheet

Boundary Justification

Boundaries were chosen to encompass the lighthouse and to ensure that the side platform section, once re-erected, will be within the nominated area. Since this is a moved structure, there was no historic setting to recognize.

☐ See continuation sheet

11. Form Prepared By

name/title National Register Staff

organization Division of Historic Preservation date July 1991

street & number P. O. Box 44247 telephone 504-342-8160

city or town Baton Rouge state Louisiana zip code 70804

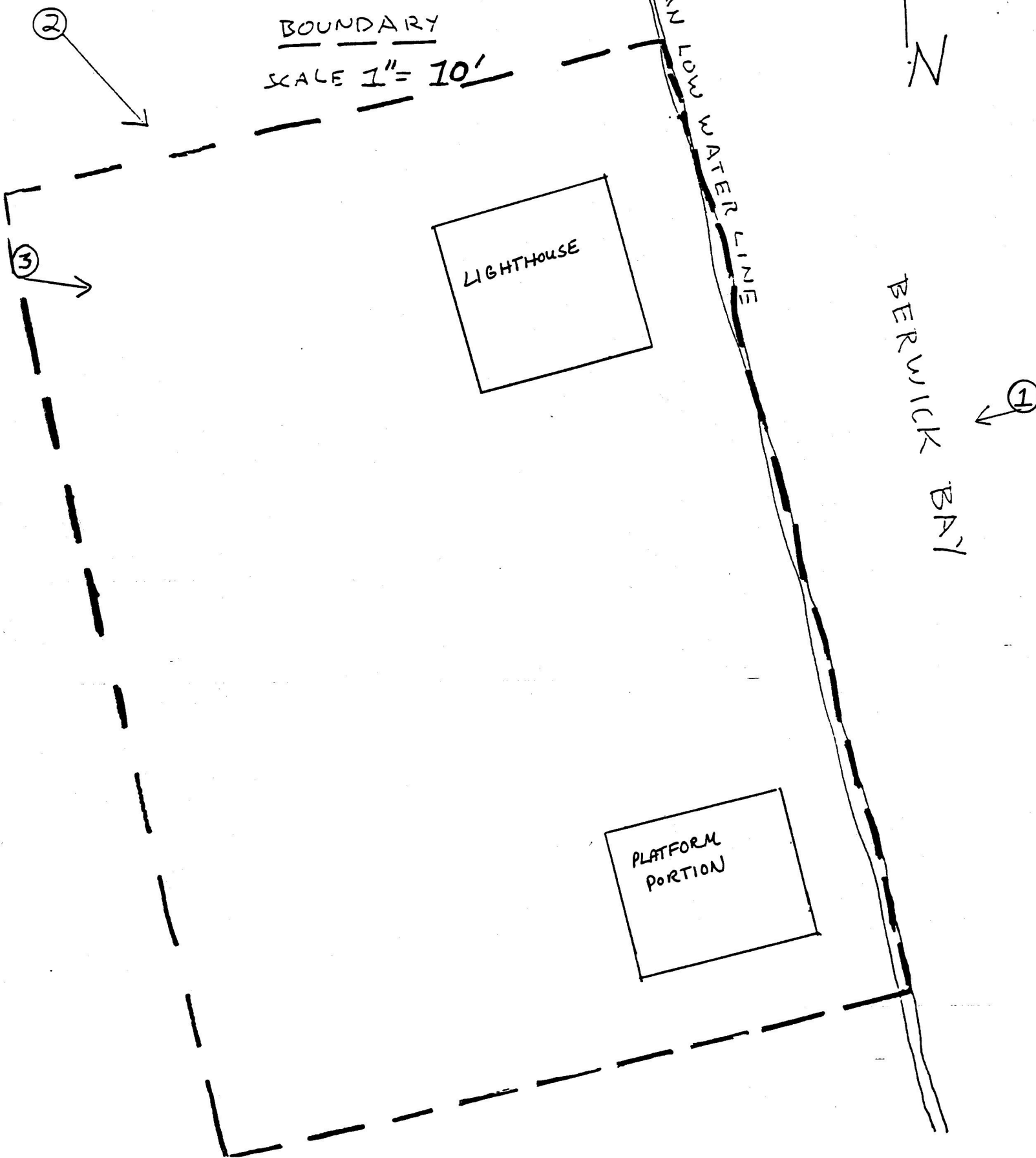
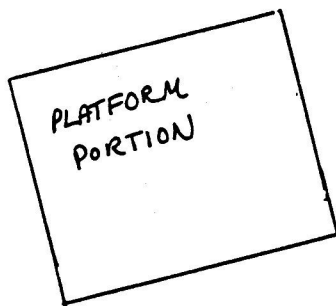
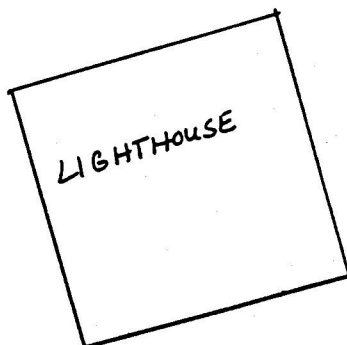
SOUTHWEST REEF
LIGHTHOUSE
ST. MARY PARISH, LA.

BOUNDARY
SCALE 1" = 10'

MEAN LOW WATER LINE

N

BERWICK BAY



UNITED STATES DEPARTMENT OF THE INTERIOR
NATIONAL PARK SERVICE

NATIONAL REGISTER OF HISTORIC PLACES
EVALUATION/RETURN SHEET

REQUESTED ACTION: NOMINATION

PROPERTY NAME: Southwest Reef Lighthouse

MULTIPLE
NAME:

STATE & COUNTY: LOUISIANA, St. Mary

DATE RECEIVED: 7/29/91 DATE OF PENDING LIST: 8/13/91
DATE OF 16TH DAY: 8/29/91 DATE OF 45TH DAY: 9/12/91
DATE OF WEEKLY LIST:

REFERENCE NUMBER: 91001152

NOMINATOR: STATE

REASONS FOR REVIEW:

APPEAL: N DATA PROBLEM: N LANDSCAPE: N LESS THAN 50 YEARS: N
OTHER: Y PDIL: N PERIOD: N PROGRAM UNAPPROVED: N
REQUEST: N SAMPLE: N SLR DRAFT: N NATIONAL: N

COMMENT WAIVER: N

☒ ACCEPT ☐ RETURN ☐ REJECT 9/12/91 DATE

ABSTRACT/SUMMARY COMMENTS:

This lighthouse was determined eligible for NR listing in 1988, before its move to its present on-shore location. The present nomination form confirms that its eligibility as an early lighthouse designed in the highly unusual Egyptian Revival style has not been impaired.

RECOM./CRITERIA Accept/C
REVIEWER Harper
DISCIPLINE Historian
DATE 9/12/91

DOCUMENTATION see attached comments Y/N see attached SLR Y (N)

CLASSIFICATION

☐ count ☐ resource type

STATE/FEDERAL AGENCY CERTIFICATION

FUNCTION

☐ historic ☐ current

DESCRIPTION

☐ architectural classification
☐ materials
☐ descriptive text

SIGNIFICANCE

Period Areas of Significance--Check and justify below

Specific dates Builder/Architect

Statement of Significance (in one paragraph)

☐ summary paragraph
☐ completeness
☐ clarity
☐ applicable criteria
☐ justification of areas checked
☐ relating significance to the resource
☐ context
☐ relationship of integrity to significance
☐ justification of exception
☐ other

BIBLIOGRAPHY

GEOGRAPHICAL DATA

☐ acreage ☐ verbal boundary description
☐ UTM's ☐ boundary justification

ACCOMPANYING DOCUMENTATION/PRESENTATION

☐ sketch maps ☐ USGS maps ☐ photographs ☐ presentation

OTHER COMMENTS

Questions concerning this nomination may be directed to

_____ Phone _____

Signed _____ Date _____



Southwest Reef Lighthouse
Berwick, St. Mary Parish, LA

Donor

in original location (Gulf of Mexico)



Southwest Reef Lighthouse
Berwick, St. Mary Parish, LA

in original location (Gulf of Mexico)



Southwest Reef Lighthouse
Berwick, St. Mary Parish, LA
Donna Fricker
July 1991
LA SHPO
Photo # 1
West/ (as seen from middle
Southwest of Berwick Bay)



Southwest Reef Lighthouse
Berwick, St. Mary Parish, LA
Donna Fricker

July 1991
LA SHPO

Photo #2
Southeast



Southwest Reef Lighthouse
Berwick, St. Mary Parish, LA
Donna Fricker

July 1991

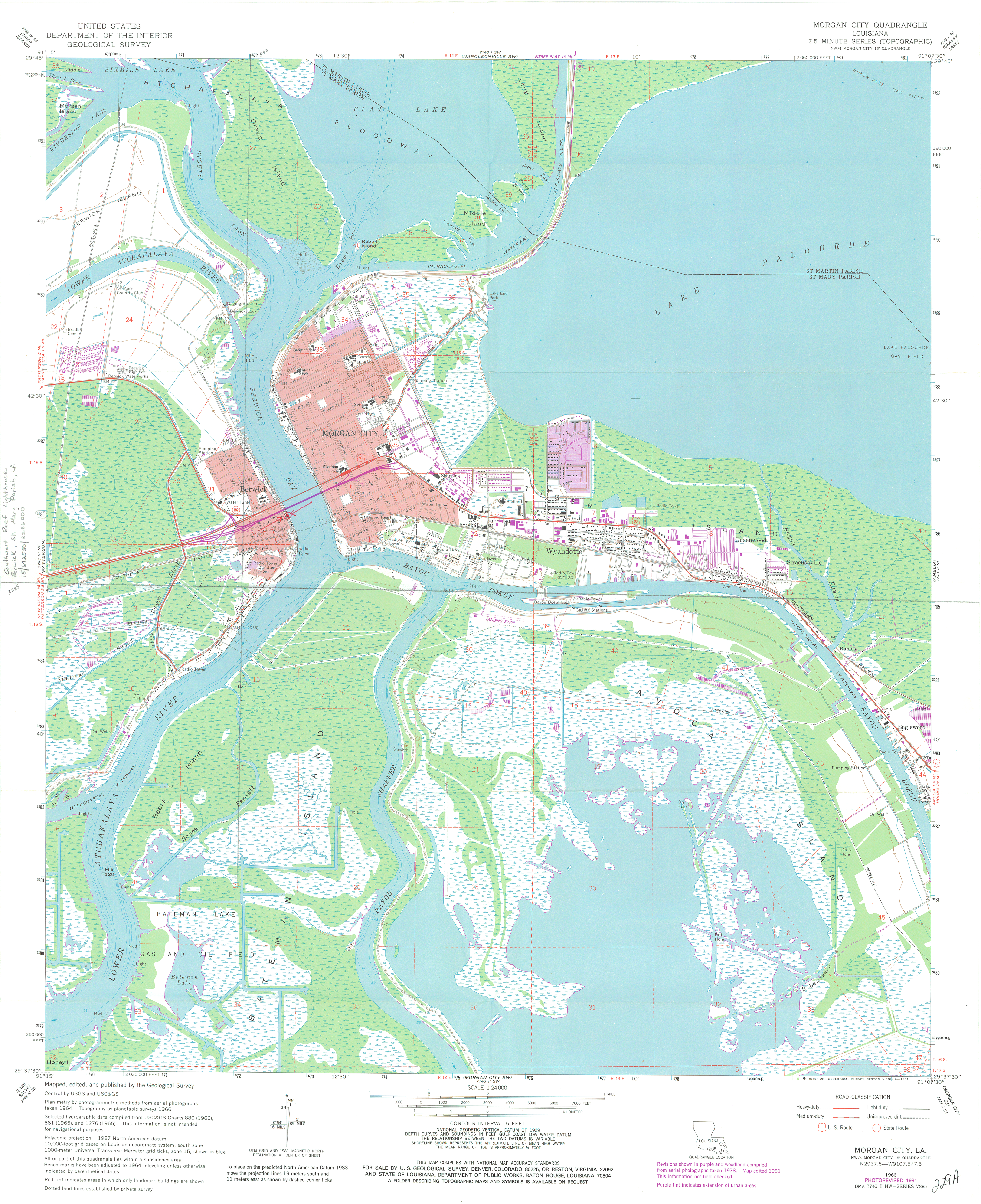
LA SHPO

Photo 3

East

UNITED STATES
DEPARTMENT OF THE INTERIOR
GEOLOGICAL SURVEY

MORGAN CITY QUADRANGLE
LOUISIANA
7.5 MINUTE SERIES (TOPOGRAPHIC)
NW/4 MORGAN CITY 15' QUADRANGLE



Mapped, edited, and published by the Geological Survey
Control by USGS and USC&GS
Planimetry by photogrammetric methods from aerial photographs
taken 1964. Topography by planetable surveys 1966
Selected hydrographic data compiled from USC&GS Charts 880 (1966),
881 (1965), and 1276 (1965). This information is not intended
for navigational purposes
Polyconic projection. 1927 North American datum
10,000-foot grid based on Louisiana coordinate system, south zone
1000-meter Universal Transverse Mercator grid ticks, zone 15, shown in blue
All or part of this quadrangle lies within a subsidence area
Bench marks have been adjusted to 1964 leveling unless otherwise
indicated by parenthetical dates
Red tint indicates areas in which only landmark buildings are shown
Dotted and lines established by private survey

To place on the predicted North American Datum 1983
move the projection lines 19 meters south and
11 meters east as shown by dashed corner ticks

THIS MAP COMPLIES WITH NATIONAL MAP ACCURACY STANDARDS
FOR SALE BY U. S. GEOLOGICAL SURVEY, DENVER, COLORADO 80225, OR RESTON, VIRGINIA 22092
AND STATE OF LOUISIANA, DEPARTMENT OF PUBLIC WORKS, BATON ROUGE, LOUISIANA 70804
A FOLDER DESCRIBING TOPOGRAPHIC MAPS AND SYMBOLS IS AVAILABLE ON REQUEST

Revisions shown in purple and woodland compiled
from aerial photographs taken 1978. Map edited 1981
This information not field checked
Purple tint indicates extension of urban areas

MORGAN CITY, LA.
NW/4 MORGAN CITY 15' QUADRANGLE
N2937.5—W9107.5/7.5
1966
PHOTOREVISED 1981
DMA 7743 II NW—SERIES V885



United States Department of the Interior

NATIONAL PARK SERVICE

P.O. BOX 37127

WASHINGTON, D.C. 20013-7127

IN REPLY REFER TO:

H32(413)

Mr. Leslie P. Tassin
Assistant Secretary
Office of Cultural Development
P.O. Box 44247
Baton Rouge, Louisiana 70804

OCT 24 1988



Dear Mr. Tassin:

On September 30, 1988, I determined that the Southwest Reef Lighthouse meets the National Register criteria on its proposed new site on the Atchafalaya River Estuary, Berwick, Louisiana. The submitted documentation described the building as a significant example of a type under Criterion C. Its Egyptian Revival design illustrates how the wide range of revival styles popular in the mid-19th century was adapted for functional structures such as lighthouses.

I made this decision in spite of two factors: the lighthouse has been moved from its original site along the Gulf Coast and it has been modified over time. The structure cannot be identified as significant under Criterion A in transportation history, however, because of its move to an inland location. Its placement in view of modern oceangoing vessels does not convey its historic role in Gulf seacoast commerce and safety.

Please submit the completed nomination as soon as possible to complete the National Register registration process. The nomination should include photographs which clearly illustrate the lighthouse in its new location.

Sincerely,

Carol D. Shull
Chief of Registration
National Register of Historic Places
Interagency Resources Division



RECEIVED
JUL 29 1991

Buddy Roemer
Governor

Paul Hardy
Lieutenant Governor
and Commissioner

NATIONAL
REGISTER

Henry A. Truxillo
Secretary

Leslie P. Tassin, Sr.
Assistant Secretary

State of Louisiana
Department of Culture, Recreation and Tourism
OFFICE OF CULTURAL DEVELOPMENT

July 29, 1991

Carol D. Shull
Chief of Registration
National Register of Historic Places
National Park Service
P. O. Box 37127
Washington, D. C. 20013-7127

Re: Southwest Reef Lighthouse, St. Mary Parish, Louisiana

Dear Ms. Shull:

At long last, enclosed please find the final Register submission for the above. As you may recall, you determined that the lighthouse was eligible for the Register on its proposed new site in Berwick (please refer to enclosed copy of your letter to us of October 24, 1988). This unusual action was taken so that the lighthouse could receive grant funds. The re-erection took much longer than anticipated, hence our delay in completing the registration process.

I hope our submission is in order. We adjusted the original form and have included photos showing the lighthouse in its new location as well as its original.

We appreciate the cooperation you have shown with this project. If you have any questions, please contact me.

Sincerely,

Jonathan Fricker
Director

JF/DF/bc

Enclosures

Jonathan Fricker, Director
Division of Historic Preservation
P.O. Box 44247 (900 Riverside North)
Baton Rouge, LA 70804
(504) 342-8160