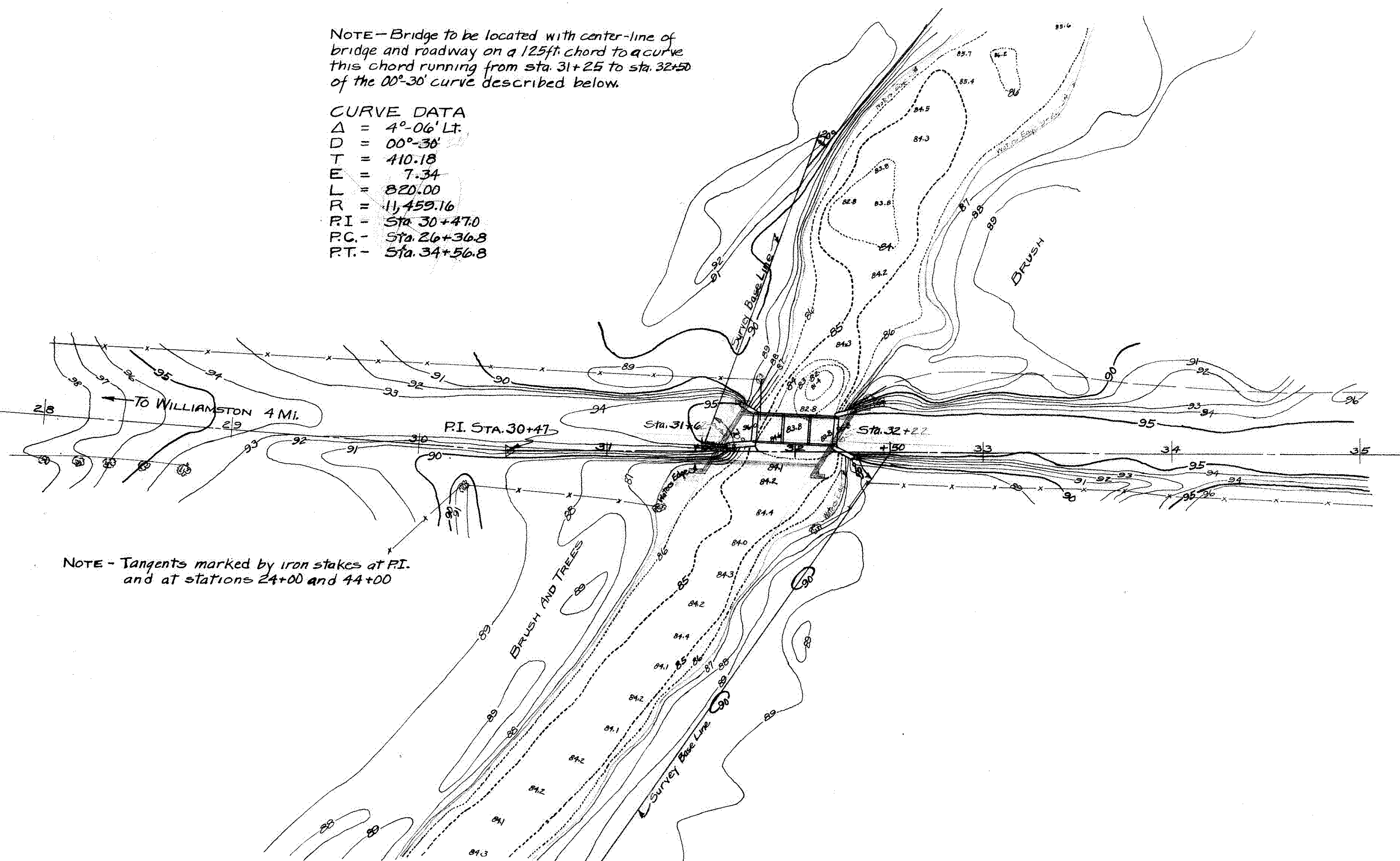


B.M. No. 4 - Spike in 24" Maple
22' Lt. Sta. 29+10 - Elev. 93.92

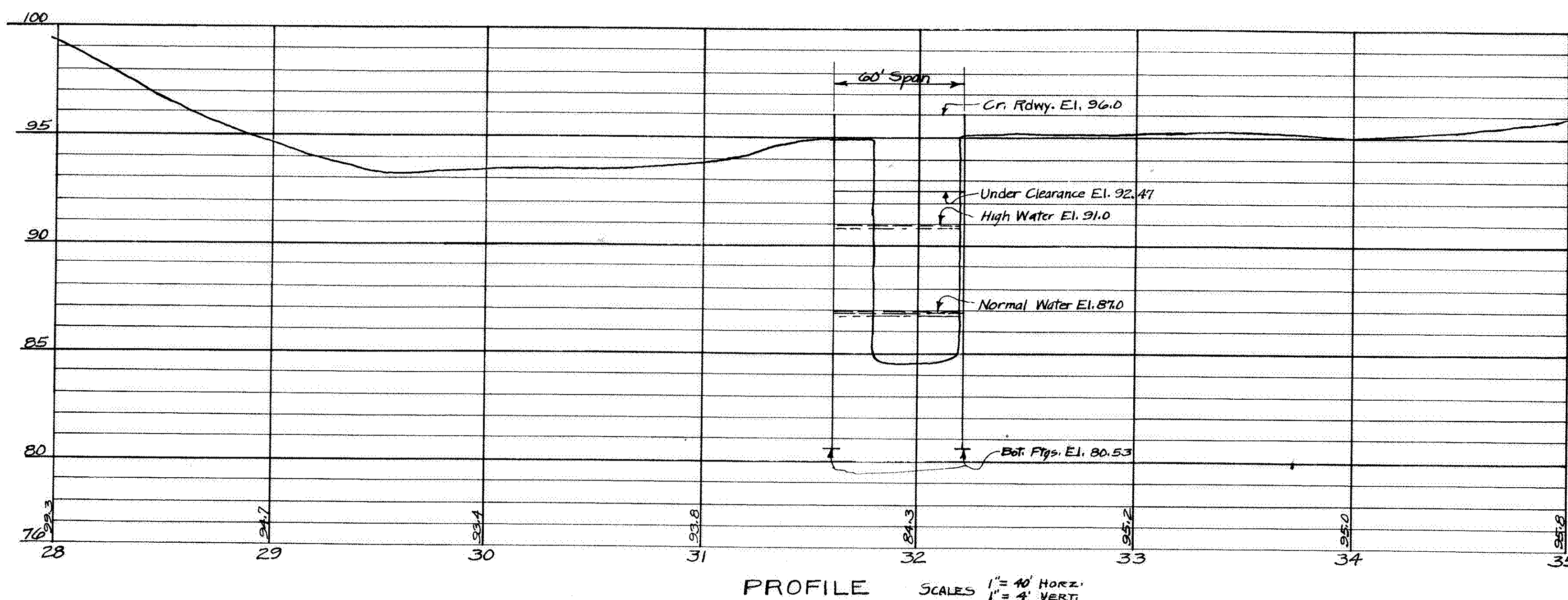
B.M. #5 - Spike in 36" Oak
25' Lt. Sta. 40+65 - Elev. 98.85

NOTE - Bridge to be located with center-line of bridge and roadway on a 125ft chord to a curve this chord running from sta. 31+25 to sta. 32+50 of the 00°-30' curve described below.

CURVE DATA
 $\Delta = 4^{\circ} 06' \text{ Lt.}$
 $D = 00^{\circ} 30'$
 $T = 410.18$
 $E = 7.34$
 $L = 820.00$
 $R = 11,459.16$
 $PI = \text{Sta. } 30+47.0$
 $PC = \text{Sta. } 26+36.8$
 $PT = \text{Sta. } 34+56.8$



SITUATION PLAN



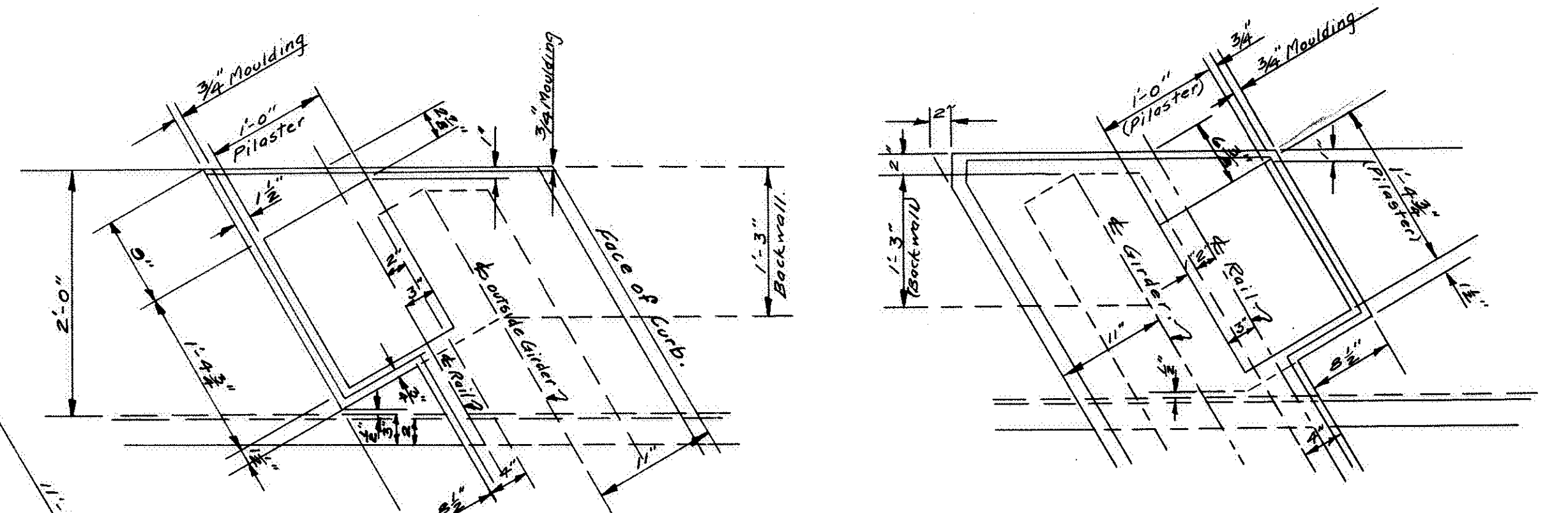
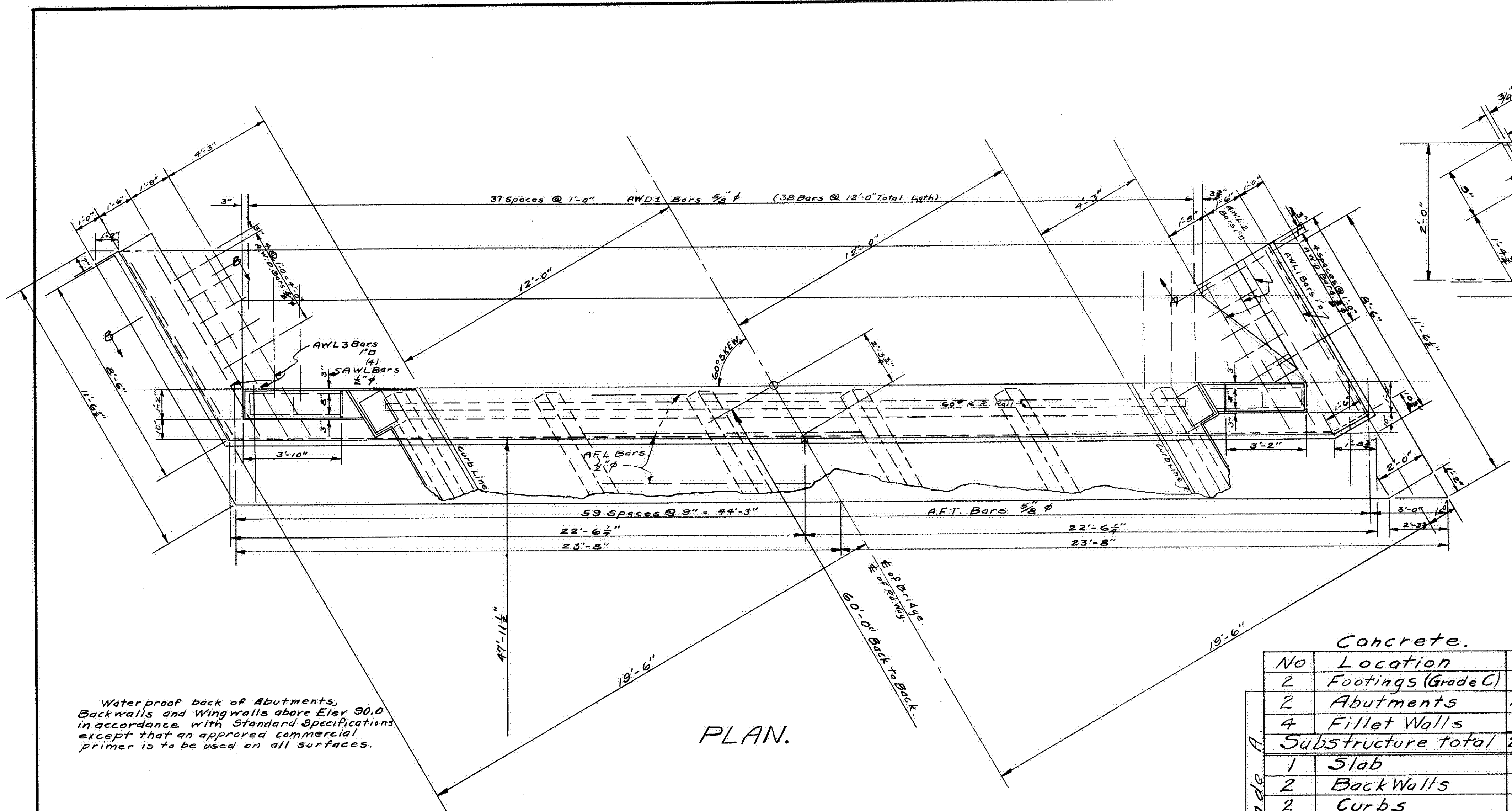
PROFILE SCALES 1" = 40' HORIZ.
1" = 4' VERT.

INGHAM COUNTY ROAD COMMISSION
 SECS 32 & 33 T4N R2E LOCKE TWP
 BRIDGE FILE No 60-B-7 ROAD STA. 31+90
 CROSSING RED CEDAR RIVER 3 MI. SOUTHEAST
 AND 1 MI NORTH FROM WILLIAMSTON

GENERAL LAYOUT

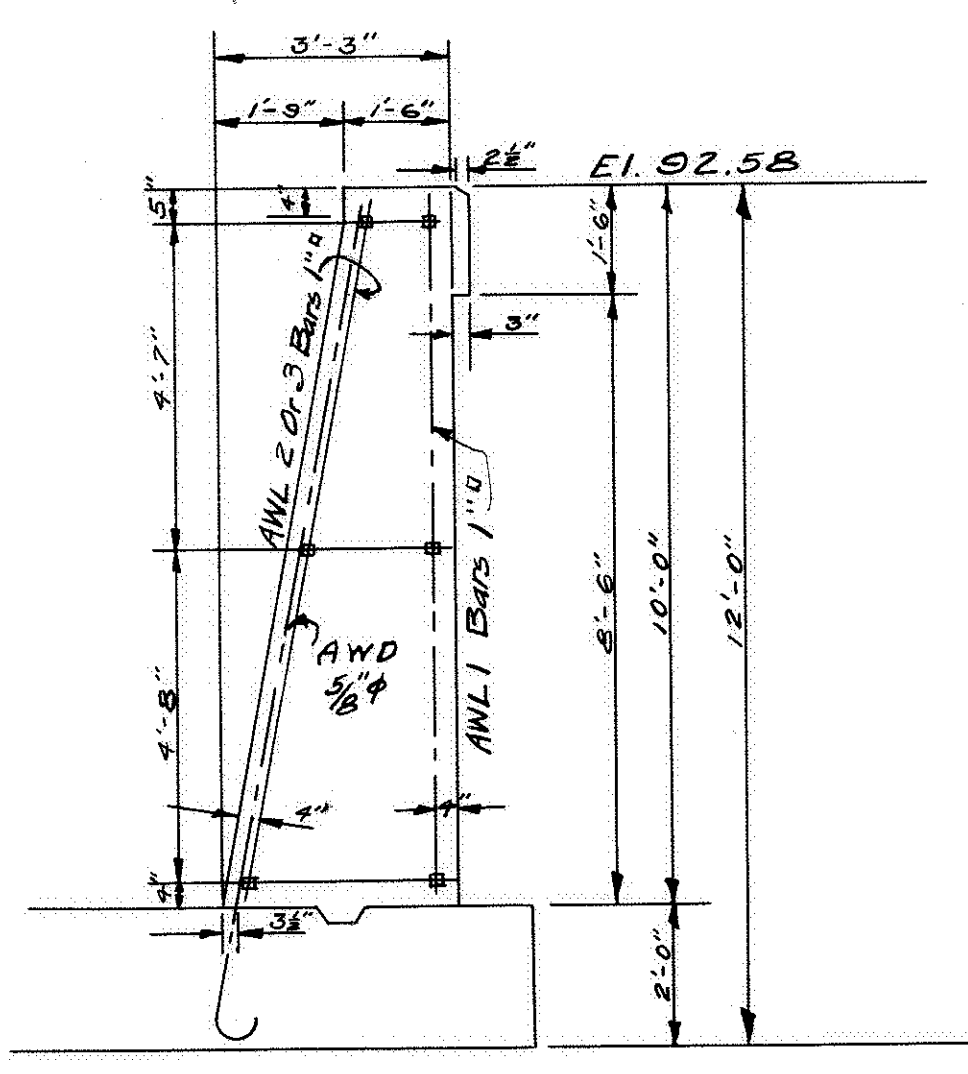
Dietz Rd.

DRAWN BY	W.C. GUNN 9-27-34
TRACED BY	W.C. GUNN 9-28-34
CHECKED BY	
APPROVED	ENGINEER
SHEET 1 OF 3 SHEETS	



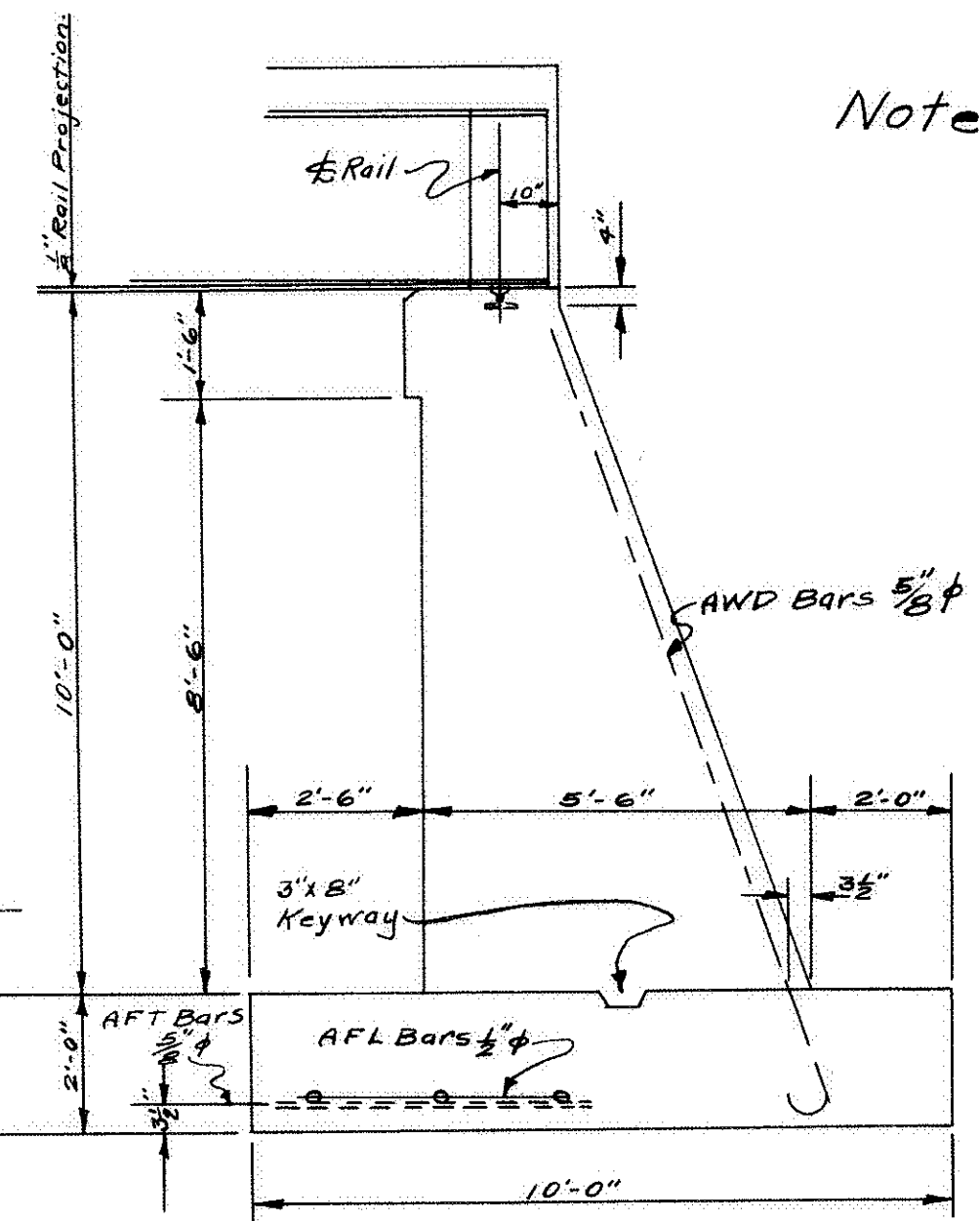
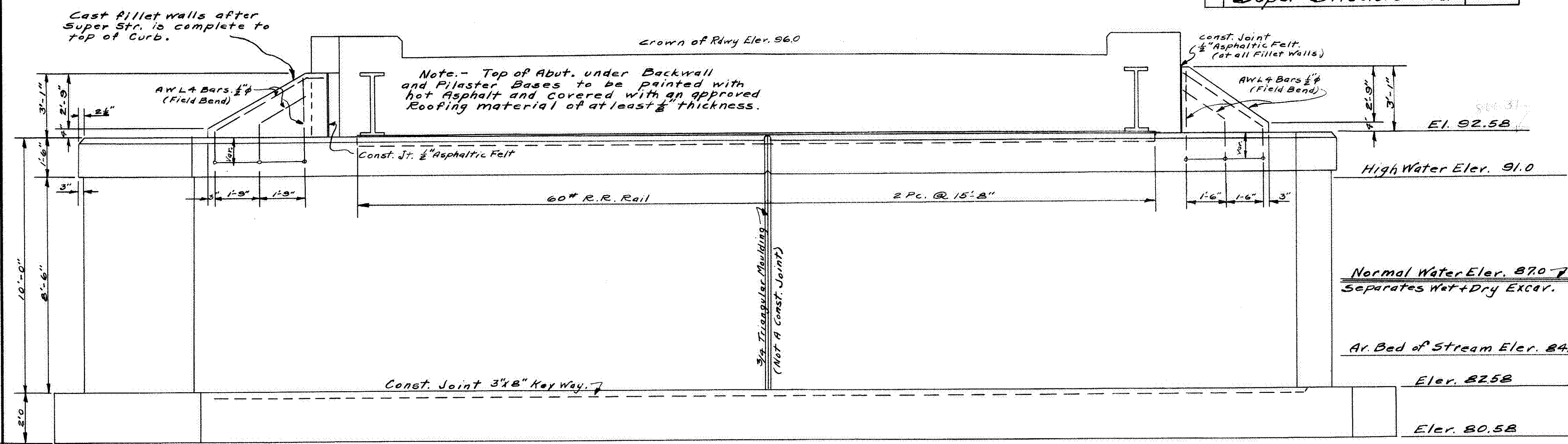
Bar Schedule

No	Description	Length	Weight
6	AWL1 1"φ	7'-2"	146
3	AWL2 1"φ	6'-4"	65
3	AWL3 1"φ	8'-0"	82
6	AWL4 1/2"φ	11'-0"	44
48	AWD 5/8"φ	12'-0"	601
6	AFL 1/2"φ	23'-4"	97
60	AFT 5/8"φ	4'-6"	282
Total One End			1314
Total Substructure			2628
Super Structure			
58	SSL 1/2"φ	30'-9"	1191
238	SST 1/2"φ	31'-0"	4929
120	SSY 1/2"φ	2'-3"	180
4	SBL1 3/4"φ	33'-0"	198
14	SBL2 1/2"φ	33'-0"	309
16	SPV 1/2"φ	7'-2"	77
Total Super Structure			6884
Total			9512



Concrete.

No	Location	C.Y.
2	Footings (Grade C)	70.1
2	Abutments	137.3
4	Fillet Walls	1.2
Substructure total		208.6
1	Slab	39.7
2	Back Walls	7.9
2	Curbs	6.2
4	Pilasters	0.7
Super Structure total		54.5

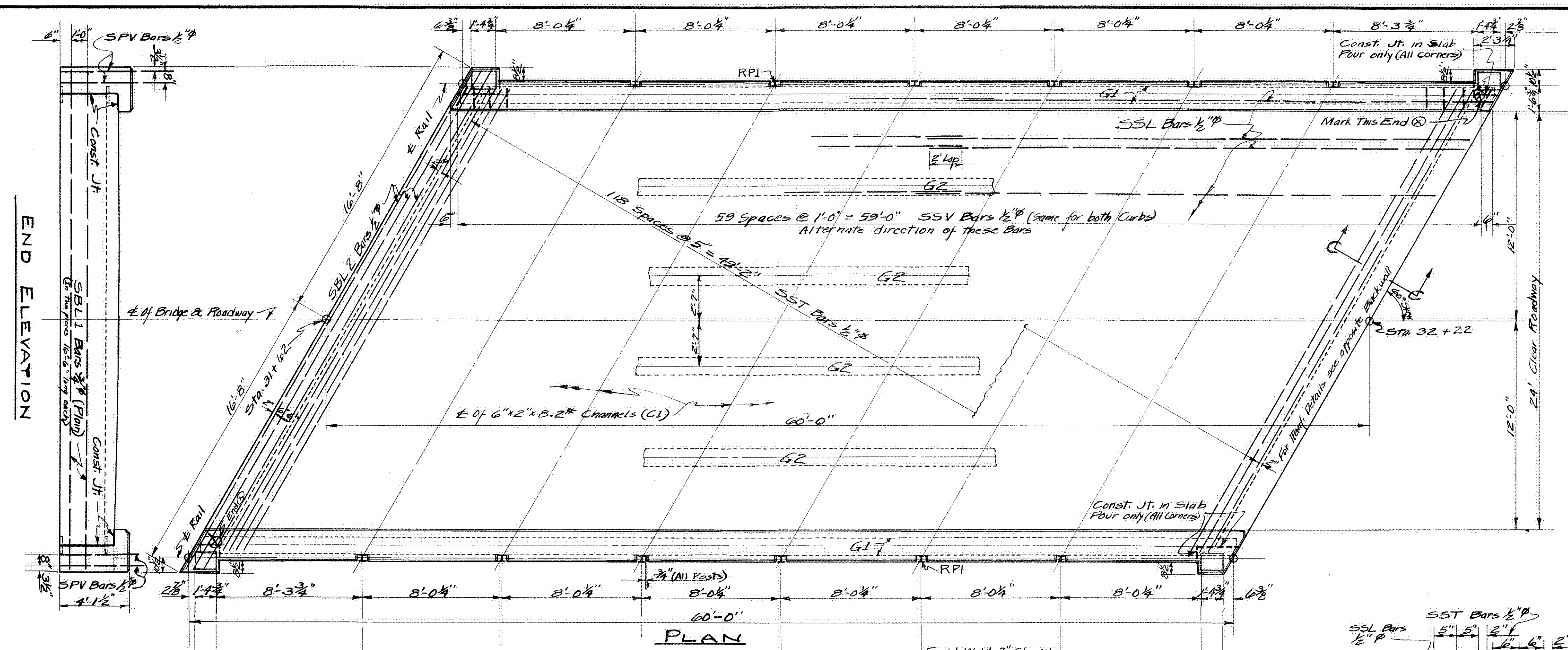


Note - Abutments are alike.

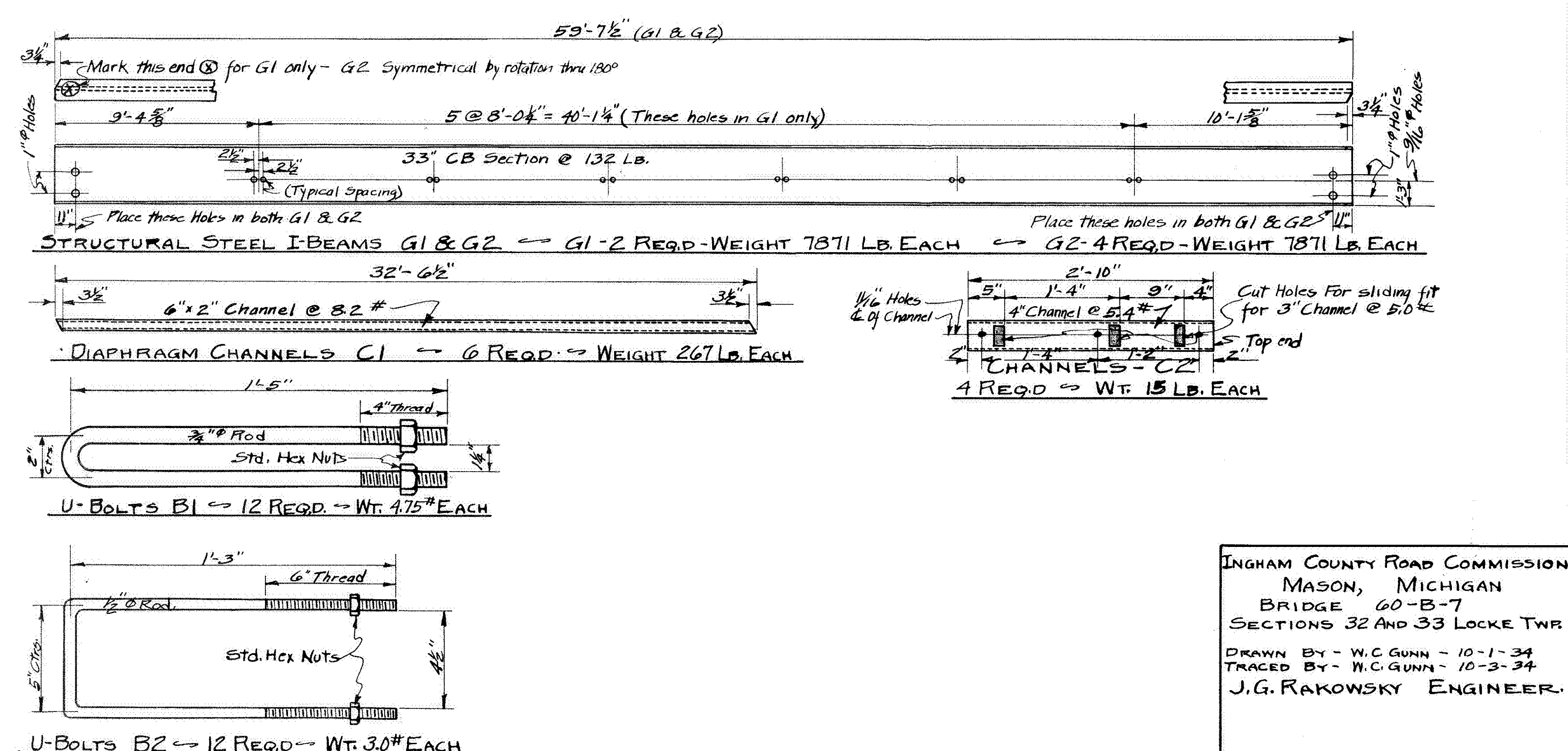
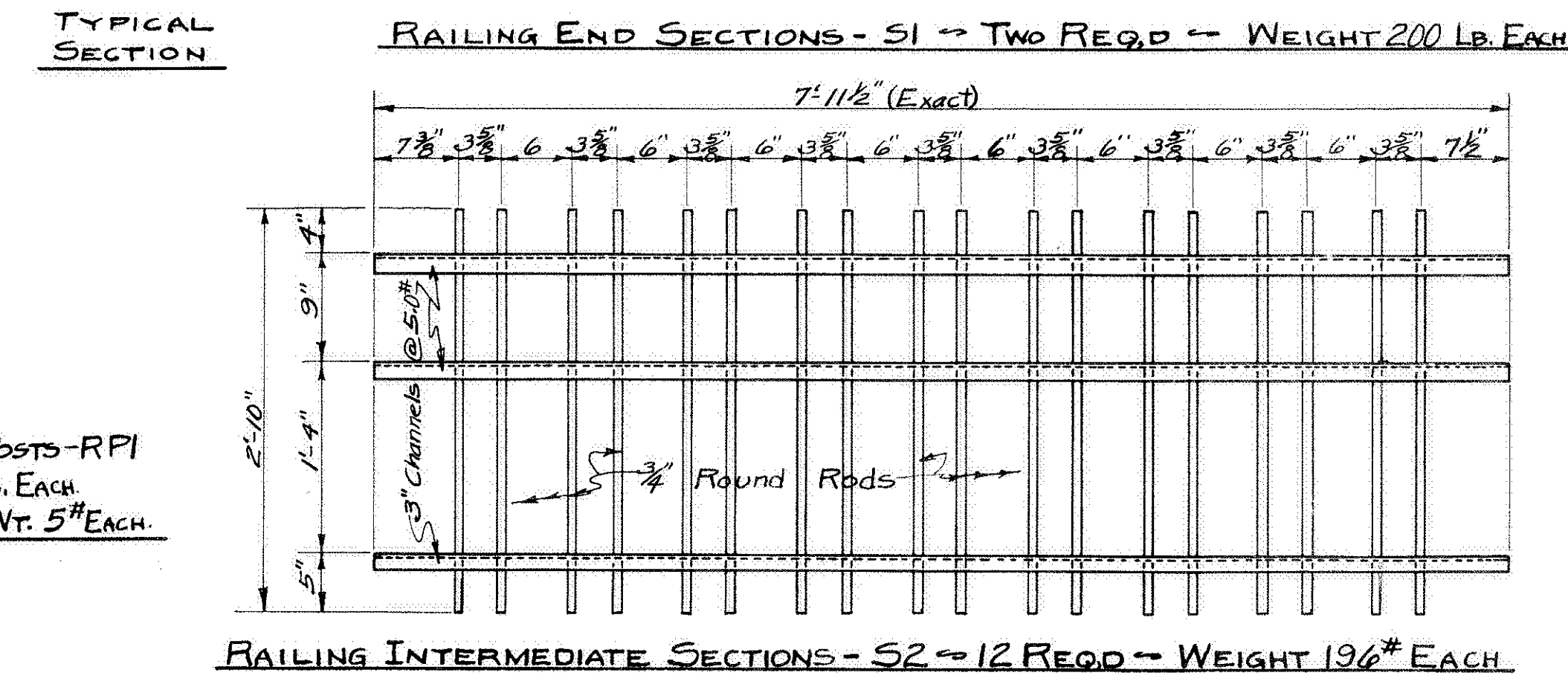
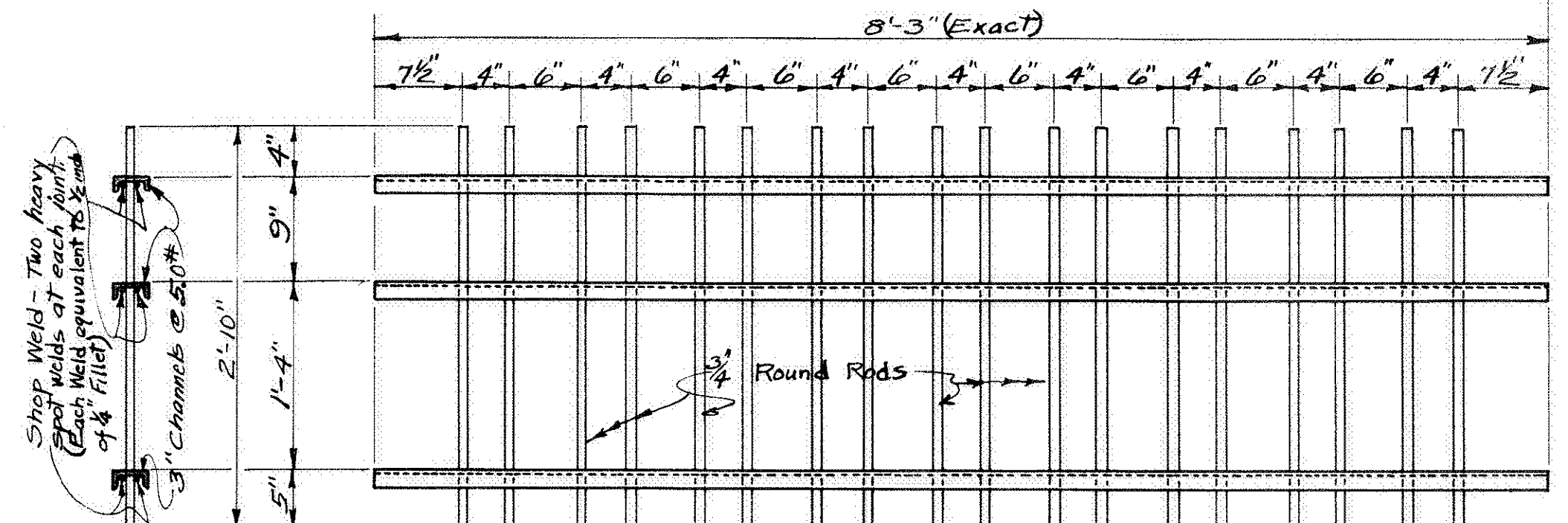
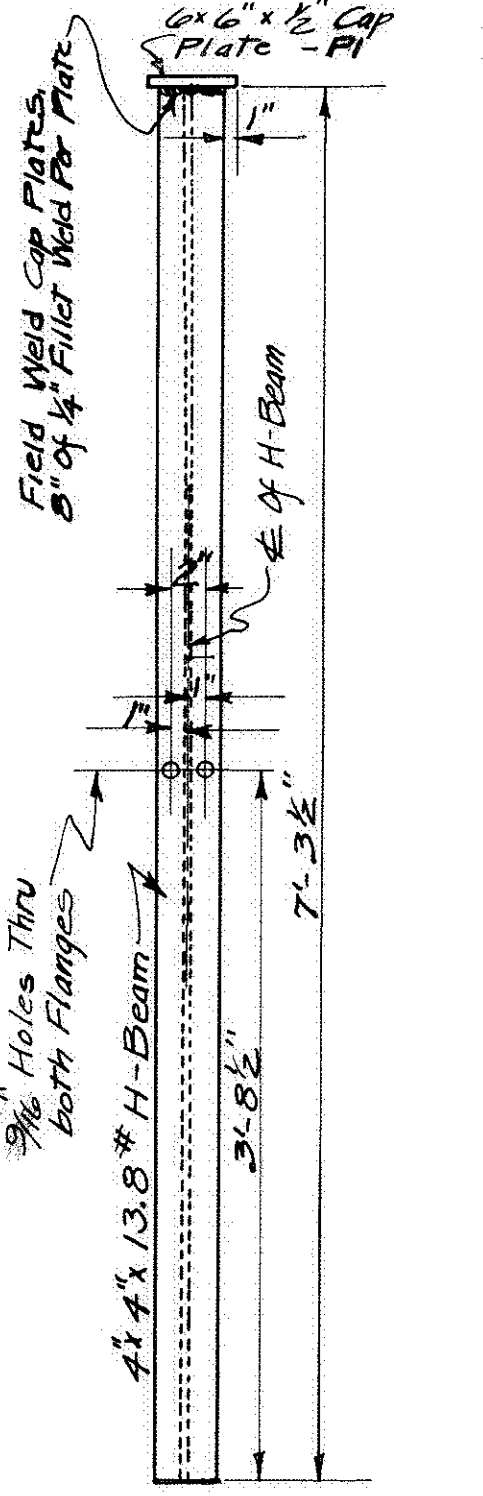
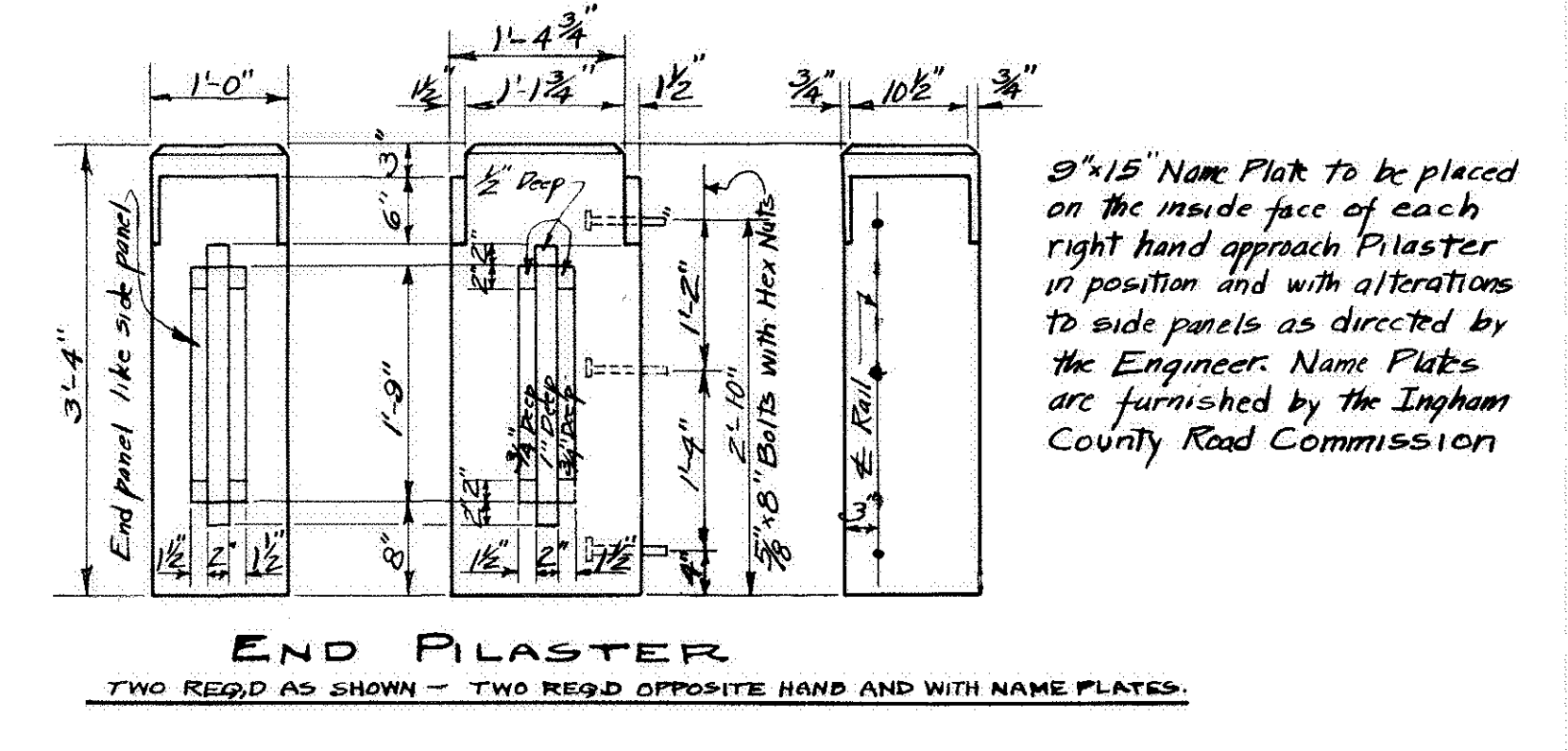
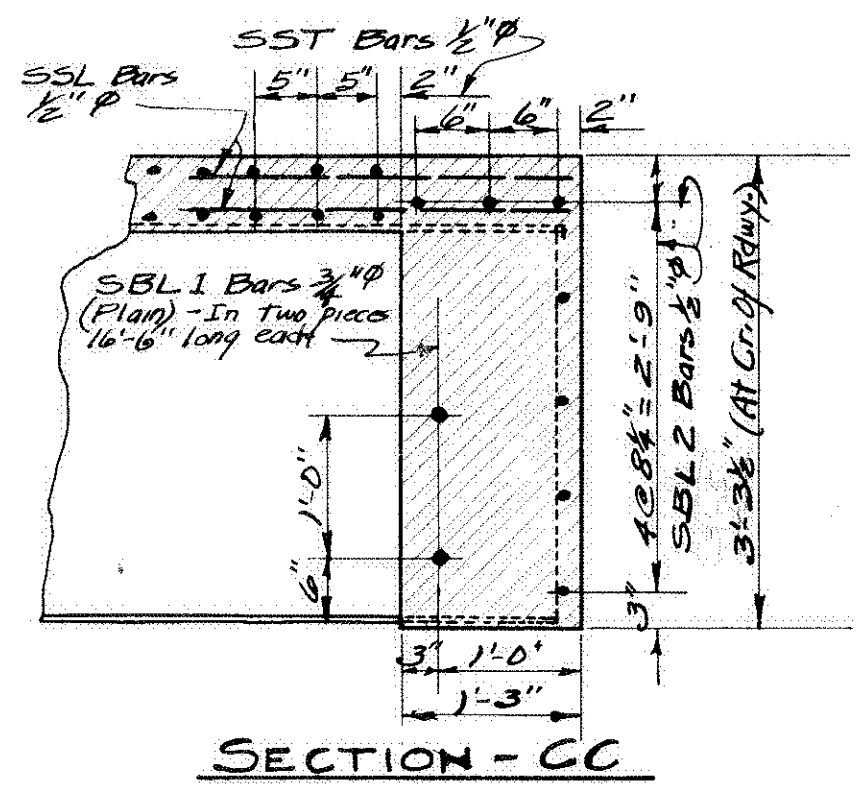
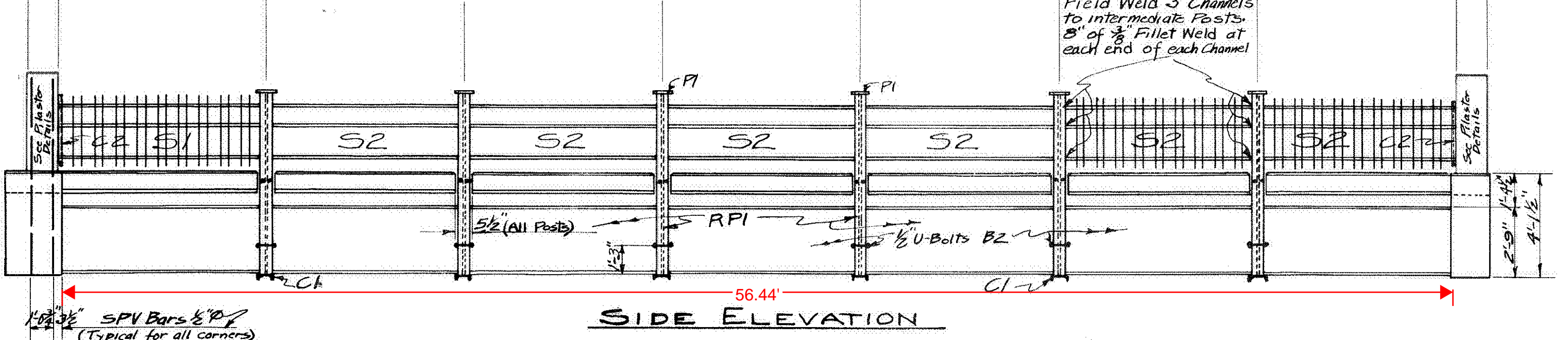
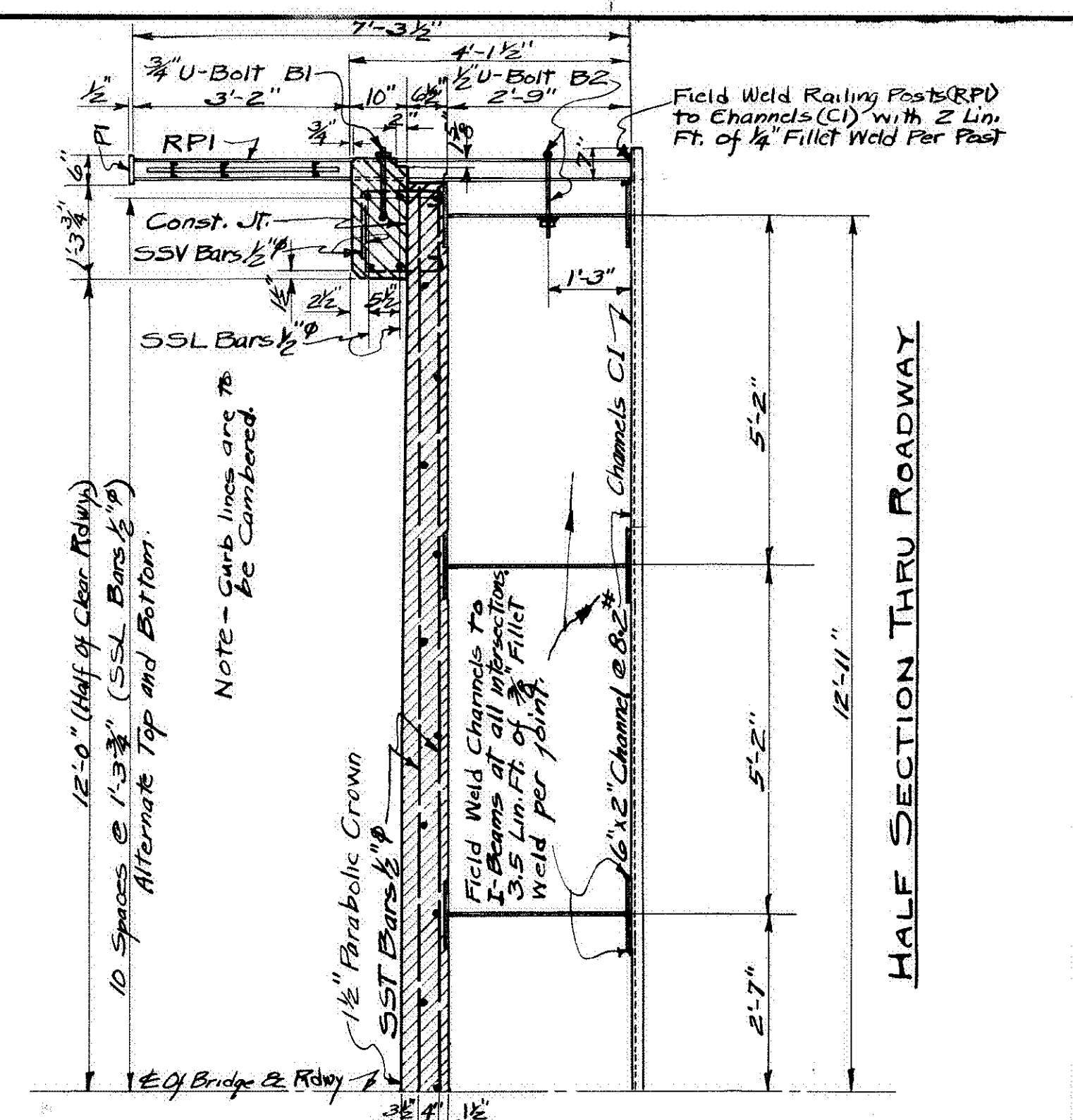
Structural Steel.

No	Description	Length	Weight
6	Girders G1+G2	59'-7 1/2"	47226
6	Diaphragms C1	32'-6 1/2"	1602
12	Rail Posts R P1	7'-3 1/2"	1202
12	Rail Post Caps	6x6	60
2	Rail Sections S1	8'-3"	400
12	Rail Sections S2	7'-11 1/2"	2352
4	Pilaster B C2	2'-10"	60
12	5/8 x 8 Bolts		11
12	1/2" U Bolts		24
12	3/4" U Bolts		57
4	Bearing Rails	15'-8"	1260
Total Structural Steel			54,254

Ingham County Road Commission.
 Mason, Michigan.
 Secs. 32+33 Locke Twp.
 J. G. Rakowsky - Engineer.
 W. C. Gunn - Designer.
 F. A. McCowan - Draftsman.



WELDING NOTE
 Compensation for all field welding is considered as included in the unit price bid for Erection of Structural Steel.
 Field welding of channels (C1) to under side of Girders may be changed to 4 x 3/8\"/>



INGHAM COUNTY ROAD COMMISSION
 MASON, MICHIGAN
 BRIDGE 60-B-7
 SECTIONS 32 AND 33 LOCKE TWP
 DRAWN BY - W.C. GUNN - 10-1-34
 TRACED BY - W.C. GUNN - 10-3-34
 J.G. RAKOVSKY ENGINEER.