



Kimley-Horn  
and Associates, Inc.



# Design Character Study

Maplewood Community Design Review Board Meeting

January 24, 2012

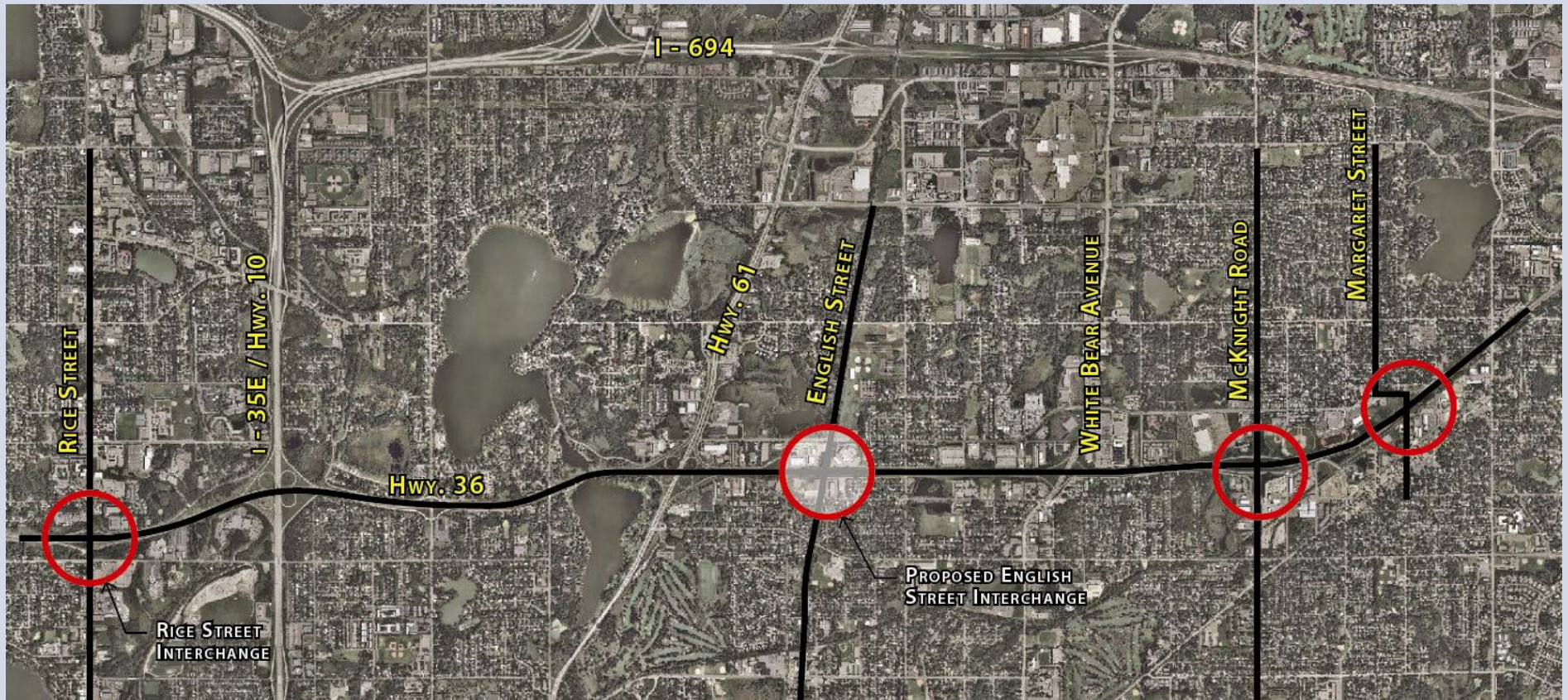
Highway 36/English Street  
**Interchange Improvements**

## Design Character Study

- Establish Design Direction for the Corridor's Primary Elements:
  - Roadway Bridge: (English Street over Hwy 36)
  - Pedestrian Bridge: (Bruce Vento Trail over Hwy 36)
  - Retaining Walls
  - Noise Barrier



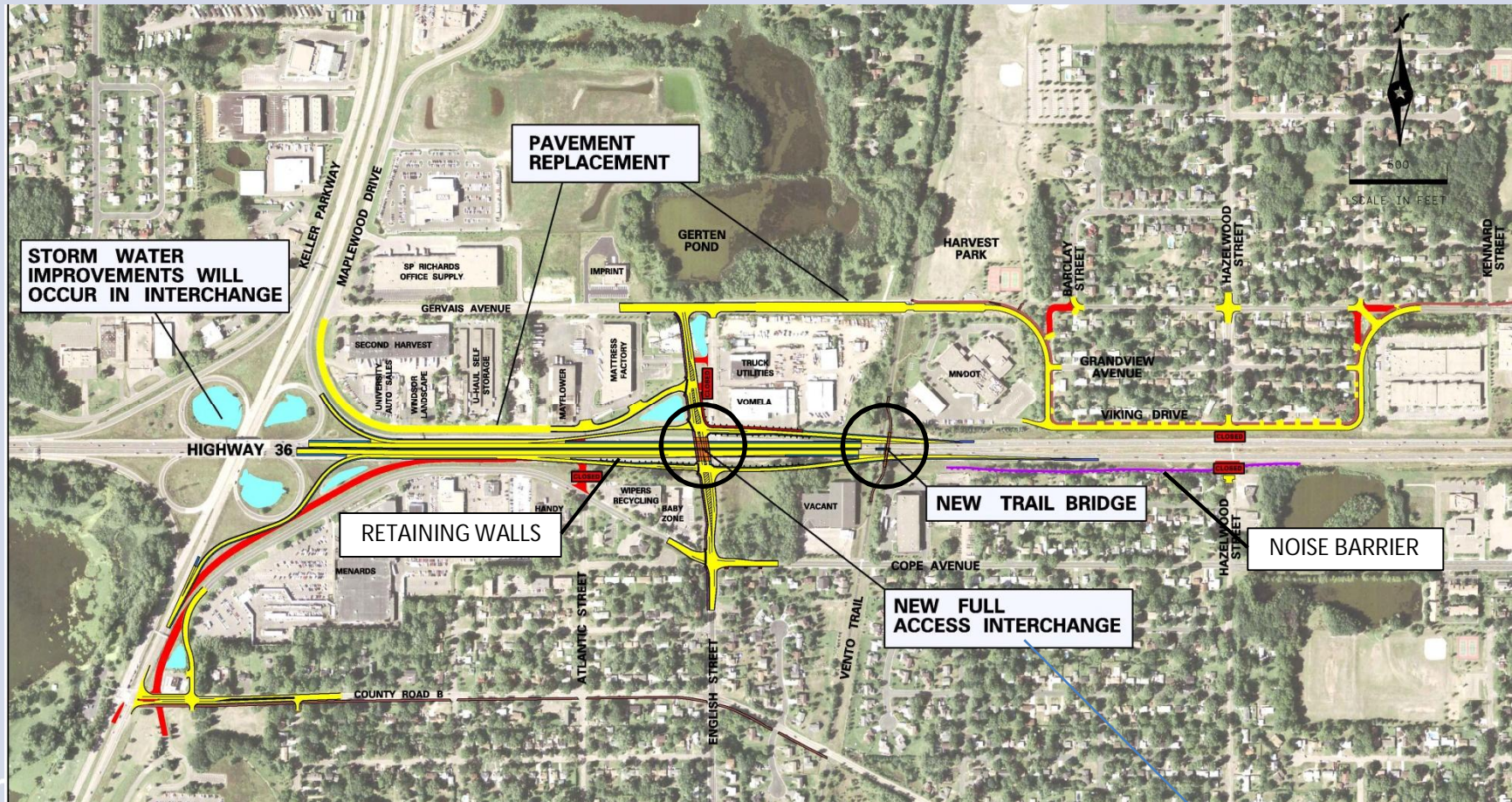
# Design Character Study



Highway 36/English Street  
Interchange Improvements



# Design Character Study



## Proposed Improvements

Highway 36/English Street  
Interchange Improvements

# Design Character Study

- **Two Precedents** (*design relevance*)

1. Highway 36 Corridor Improvements:

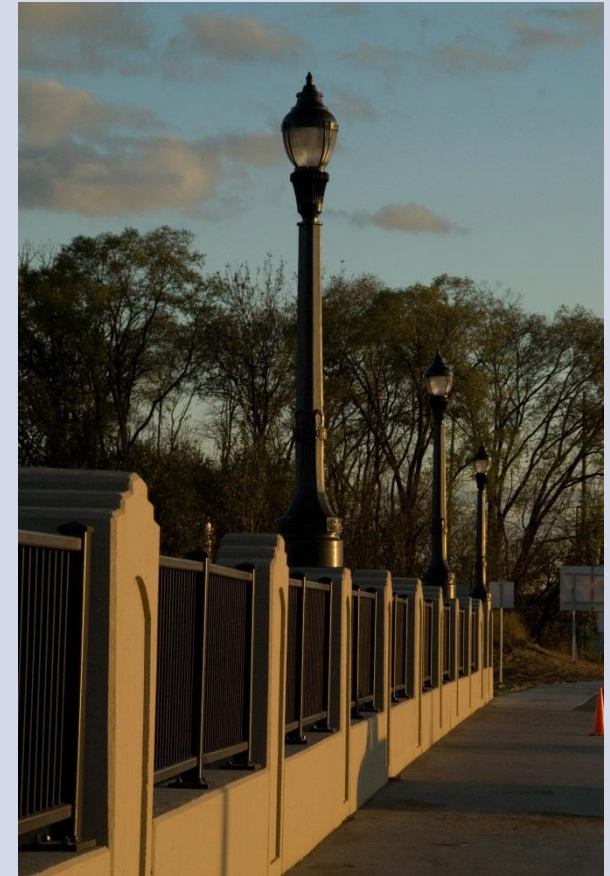
- Rice Street
- Margaret Street
- McKnight Road

2. Existing Railroad Bridge @ Bruce Vento Trail

Highway 36/English Street  
Interchange Improvements



# Design Character Study



## Hwy 36 Corridor

Hwy 36 and Rice Street – Maplewood,  
Little Canada, Roseville

Highway 36/English Street  
Interchange Improvements



# Design Character Study



## Hwy 36 Corridor

Margaret Street – North St. Paul

Highway 36/English Street  
Interchange Improvements

# Design Character Study



**Hwy 36 Corridor**  
McKnight Road – North St. Paul

Highway 36/English Street  
Interchange Improvements



## Design Character Study

- Hwy. 36 Improvements Design Attributes:
  - Arched forms
  - Structure monochromatic (tan color) @ Rice
  - Subtle/limited detailing and texturing @ Rice
  - Structure multiple colors/textures (tan/red brick) @Margaret and McKnight
  - Pedestrian accommodations
  - Ornamental Lighting

# Design Character Study



## Hwy 36 - Existing RR Bridge

Bruce Vento Trail

Highway 36/English Street  
Interchange Improvements



## Design Character Study

### ■ Existing RR (Trail) Bridge Design Attributes:

- Dominant vertical columns at abutment corner which projects above trail surface elevation
- Columns have multiple faces/planes
- No other detailing – smooth surfaces
- Structure monochromatic (gray)
- Functional chain link fencing
- No lighting

## Design Character Study

# English Street over Hwy. 36 Roadway Bridge Design Concepts

Highway 36/English Street  
Interchange Improvements



# Design Character Study

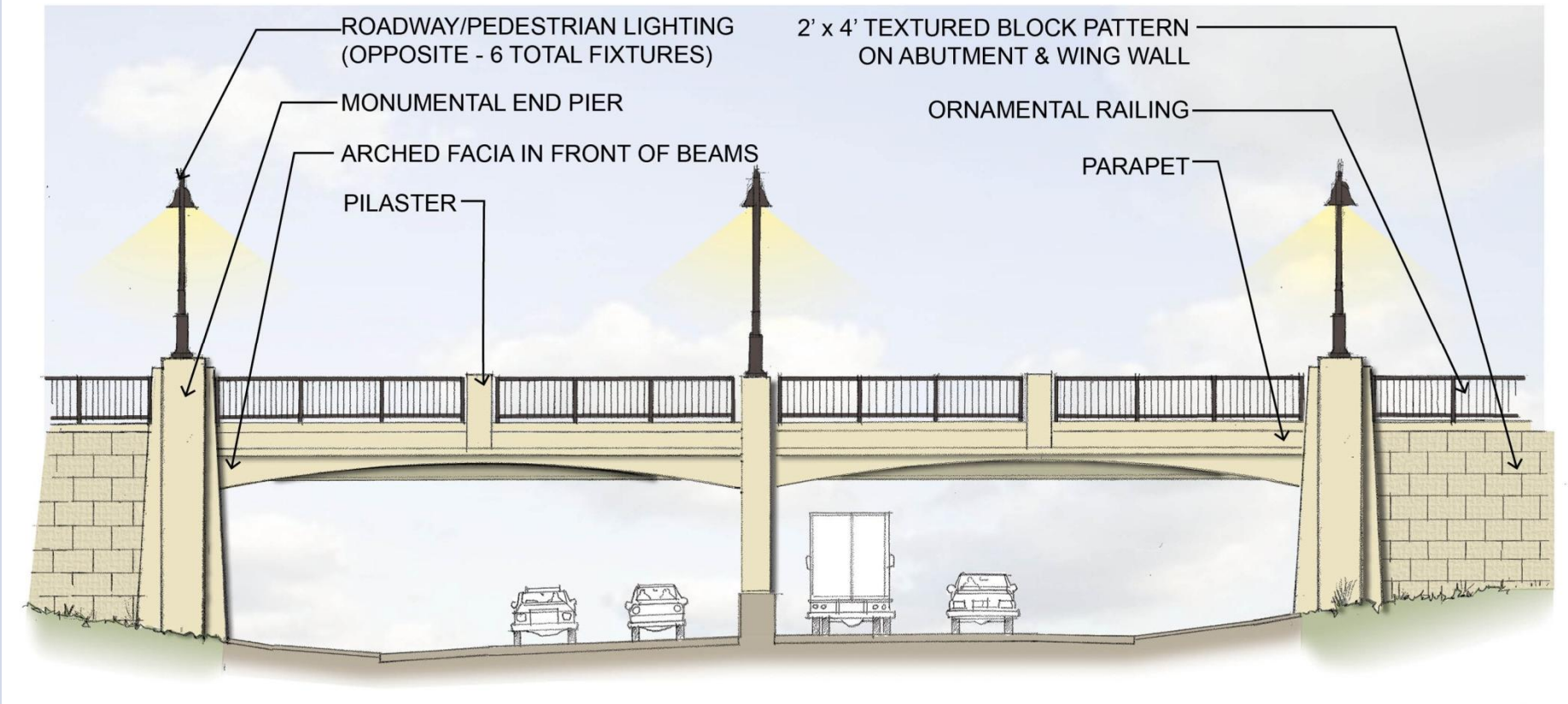


## Roadway Bridge Design

Concept A – Match Rice Street Bridge

Highway 36/English Street  
Interchange Improvements

# Design Character Study



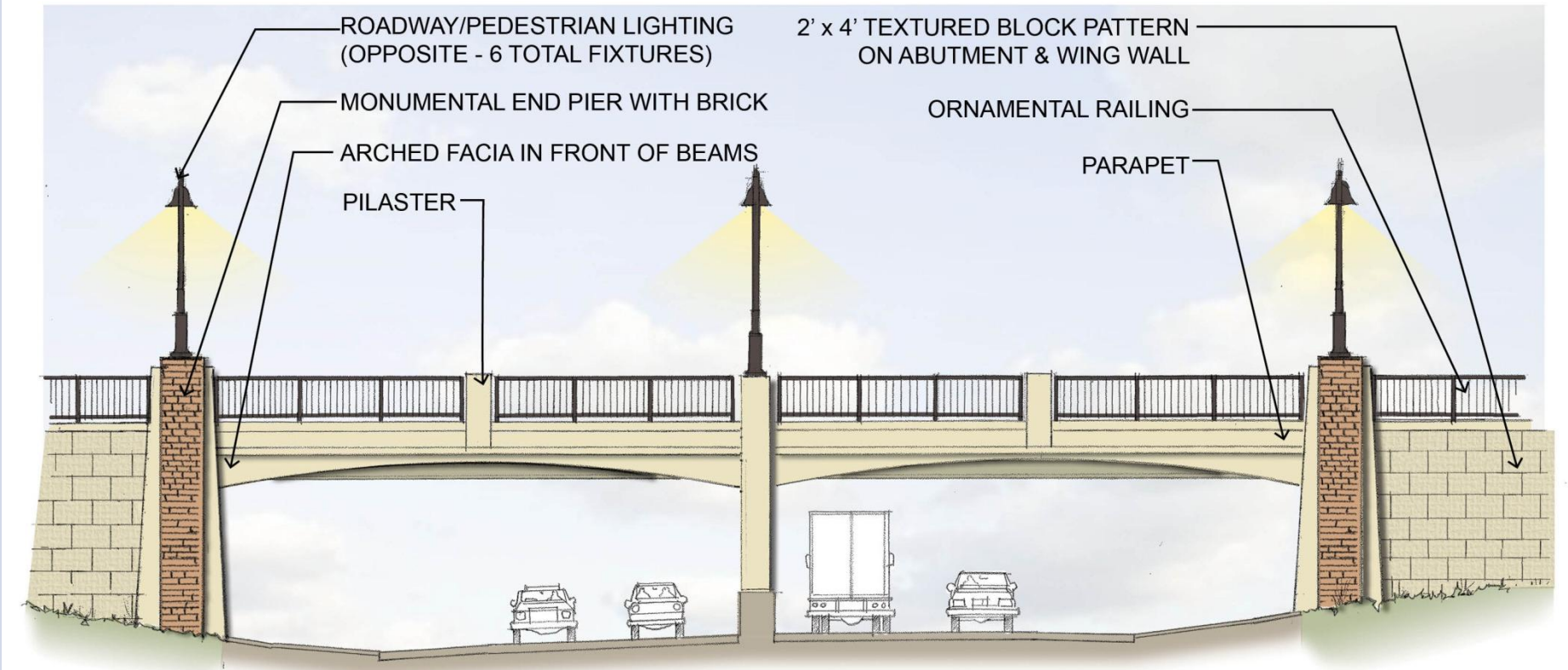
## Roadway Bridge Design

Concept B – Cues from Exist RR Bridge

Highway 36/English Street  
Interchange Improvements



# Design Character Study

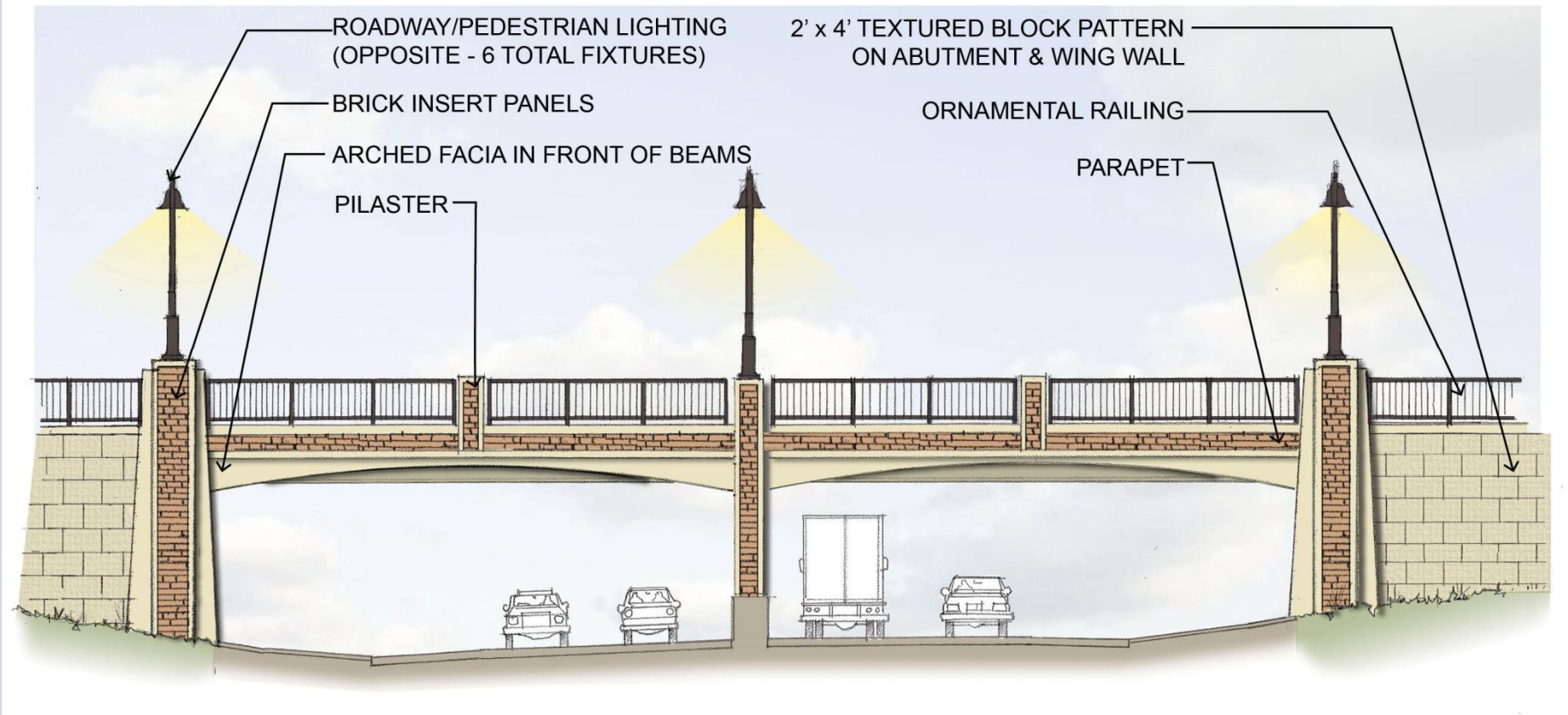


## Roadway Bridge Design

Concept C – RR Cues with end column  
brick columns

Highway 36/English Street  
Interchange Improvements

# Design Character Study



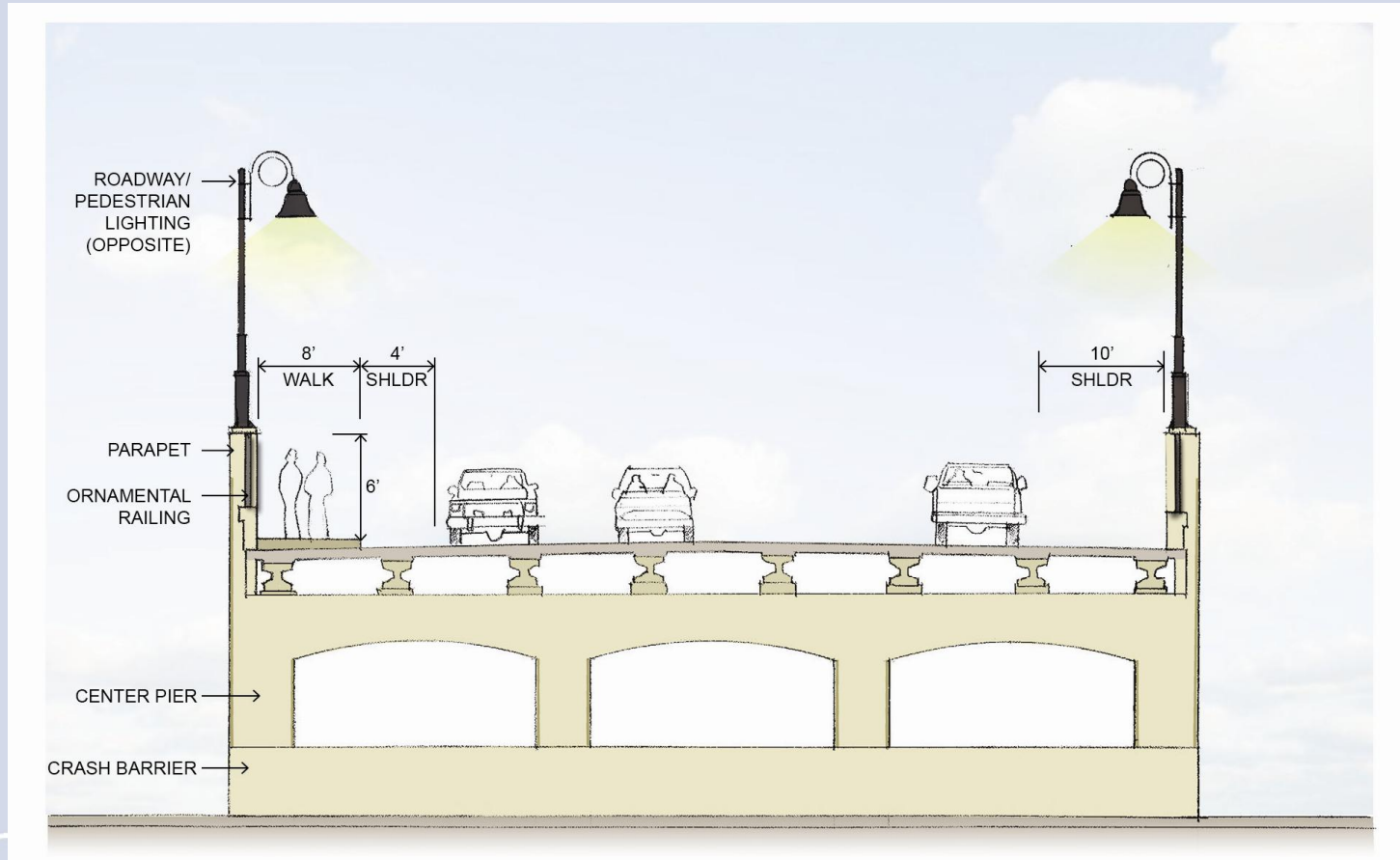
## Roadway Bridge Design

Concept D – RR Bridge cues with Margaret St. Bridge brick accents

Highway 36/English Street  
Interchange Improvements



# Design Character Study

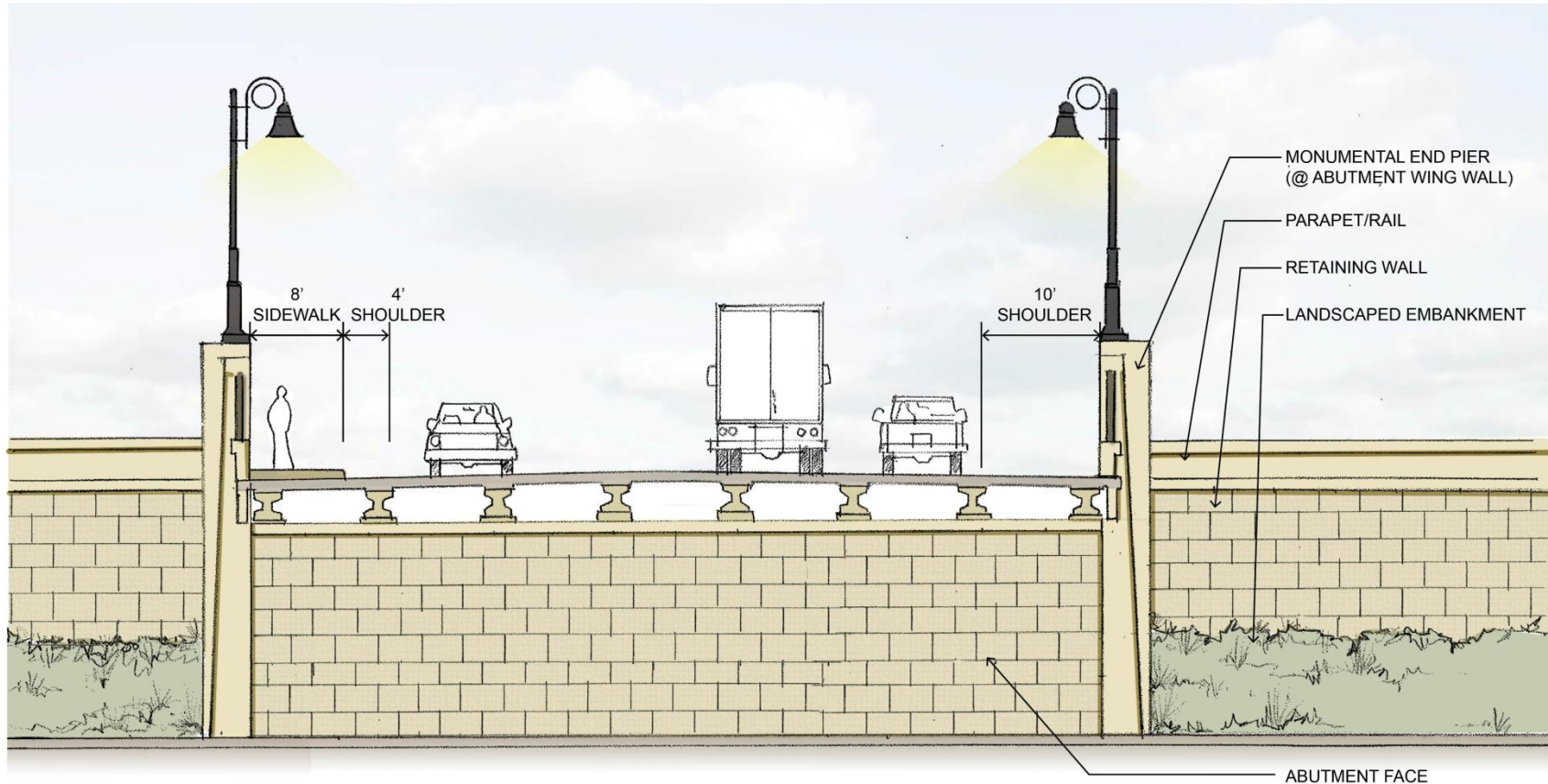


## Roadway Bridge Design

Section at Center Pier

Highway 36/English Street  
Interchange Improvements

# Design Character Study



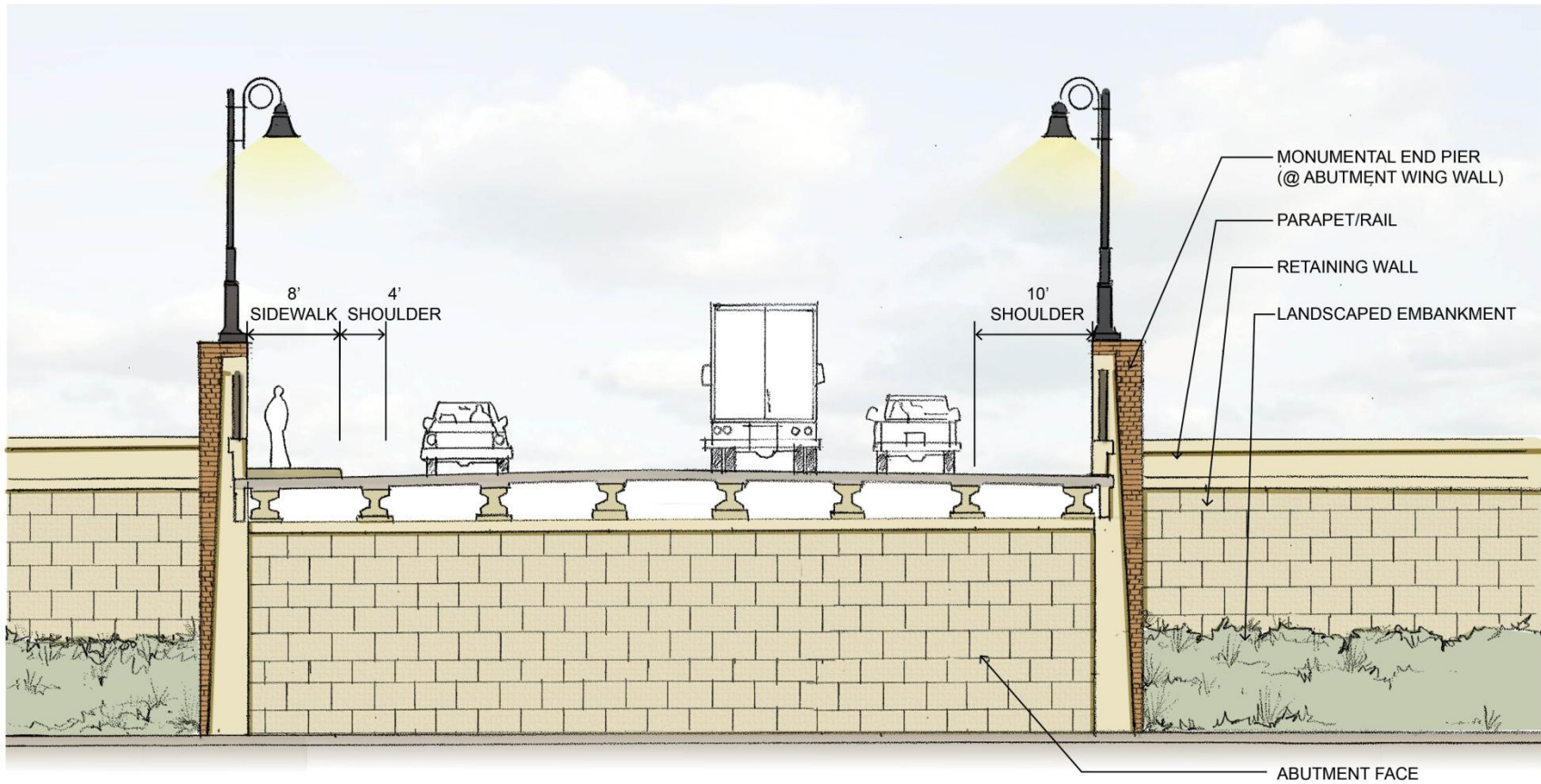
## Roadway Bridge Design

Section at End Pier (Concept B)

Highway 36/English Street  
Interchange Improvements



# Design Character Study



## Roadway Bridge Design

Alternate with Brick Accents

Highway 36/English Street  
Interchange Improvements

# Design Character Study



City of Maplewood logo

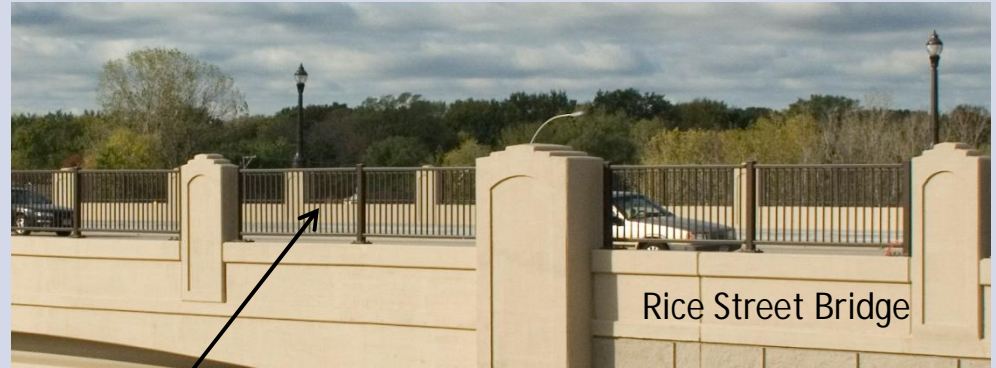
Paint dark bronze

Simple metal railing, paint dark bronze

2' x 4' block pattern with 'limestone' textured finish

Color to match Rice St. Bridge

## Ornamental Railings



Rice Street Bridge



## Abutments and Wing Walls

## Bridge Design Elements

Lighting (match Legacy style)

Highway 36/English Street  
Interchange Improvements

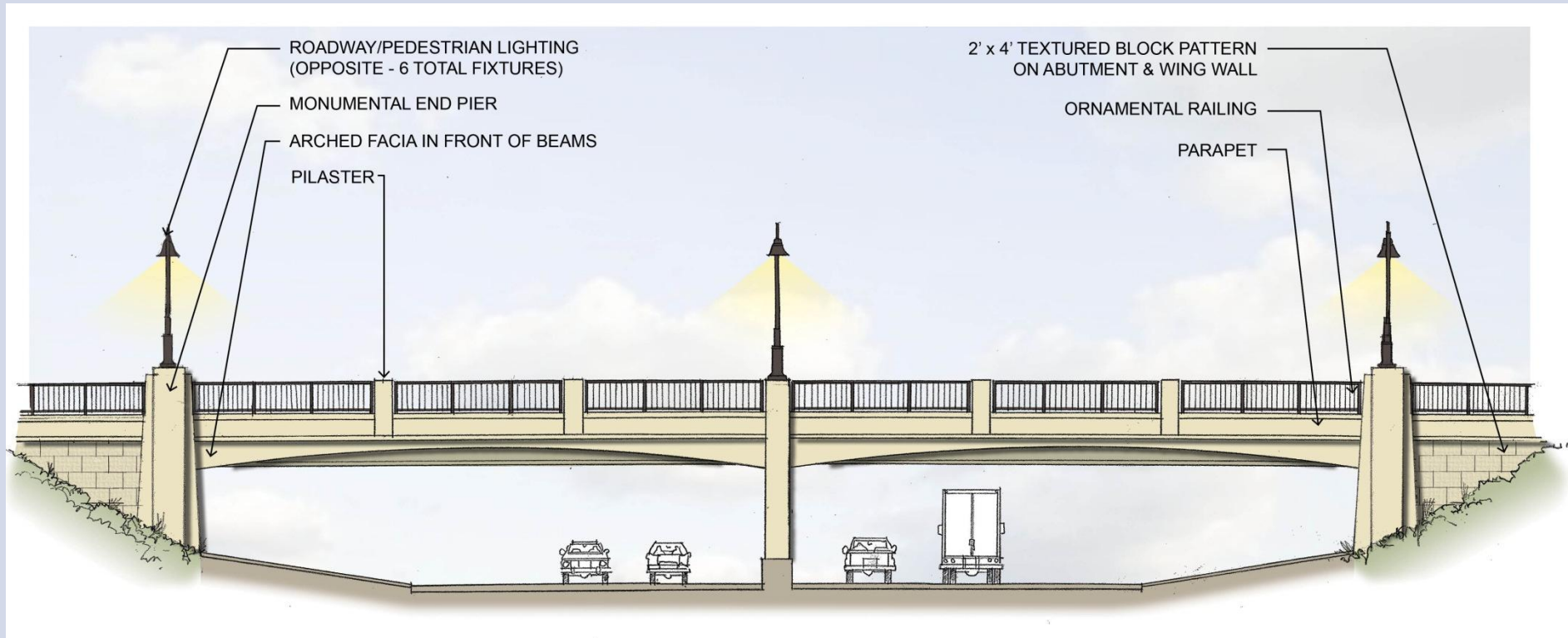


## Design Character Study

# Bruce Vento Trail over Hwy. 36 Pedestrian Bridge Design Concepts

Highway 36/English Street  
Interchange Improvements

# Design Character Study



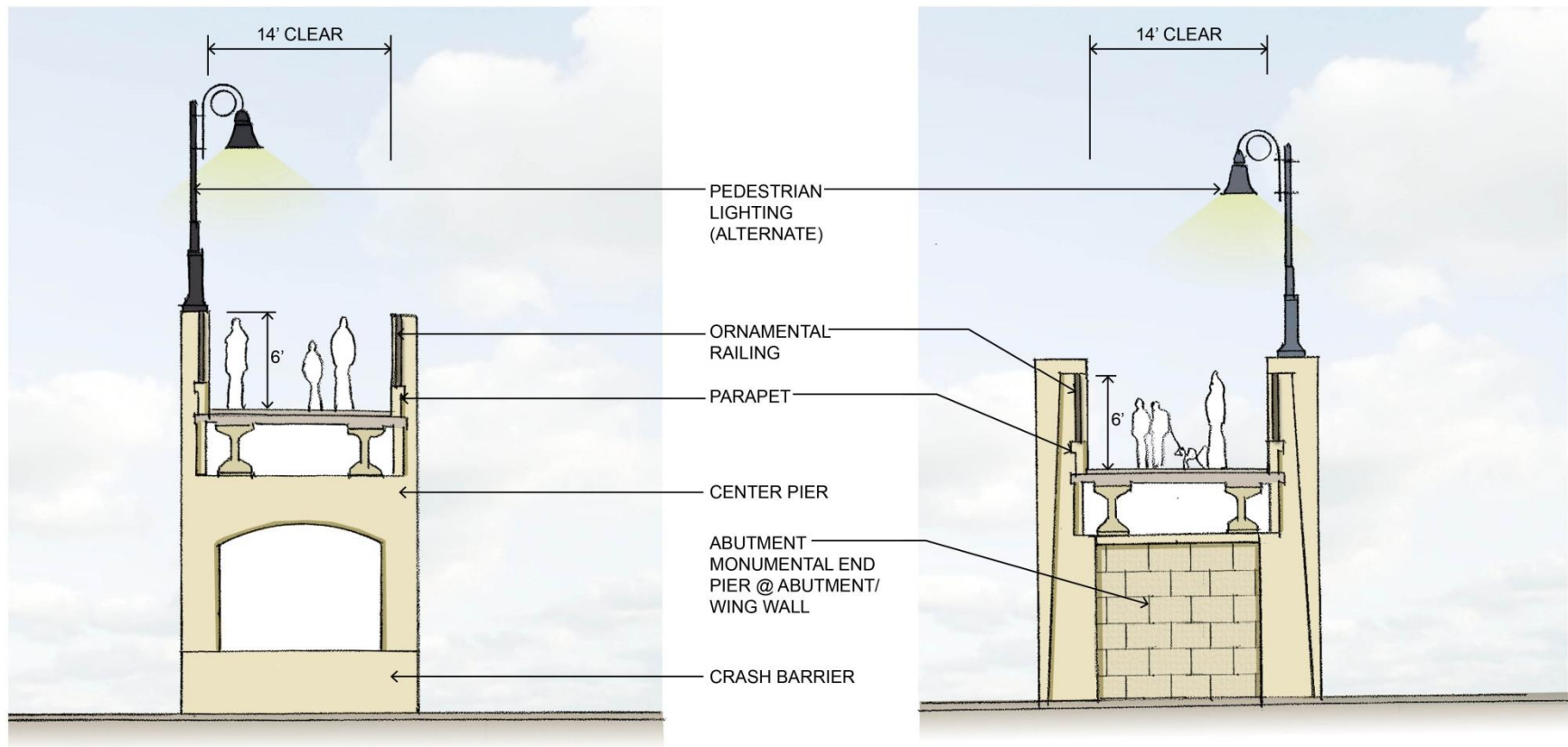
## Pedestrian Bridge Design

Elevation – Concept B

Highway 36/English Street  
Interchange Improvements



# Design Character Study

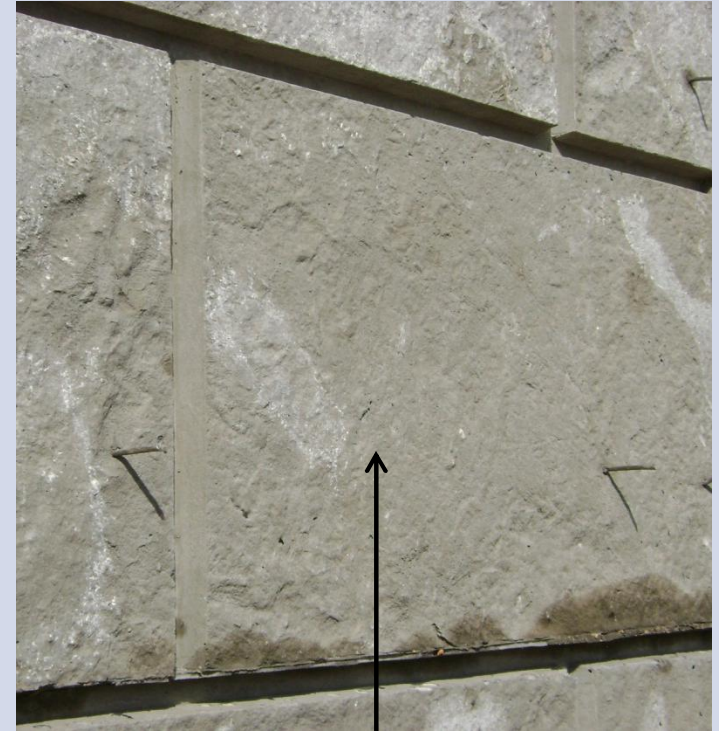


## Pedestrian Bridge Design

Center Pier and End Pier Sections

Highway 36/English Street  
Interchange Improvements

# Design Character Study



2' x 4' block pattern with 'limestone' textured finish

Color to match Rice St. Bridge

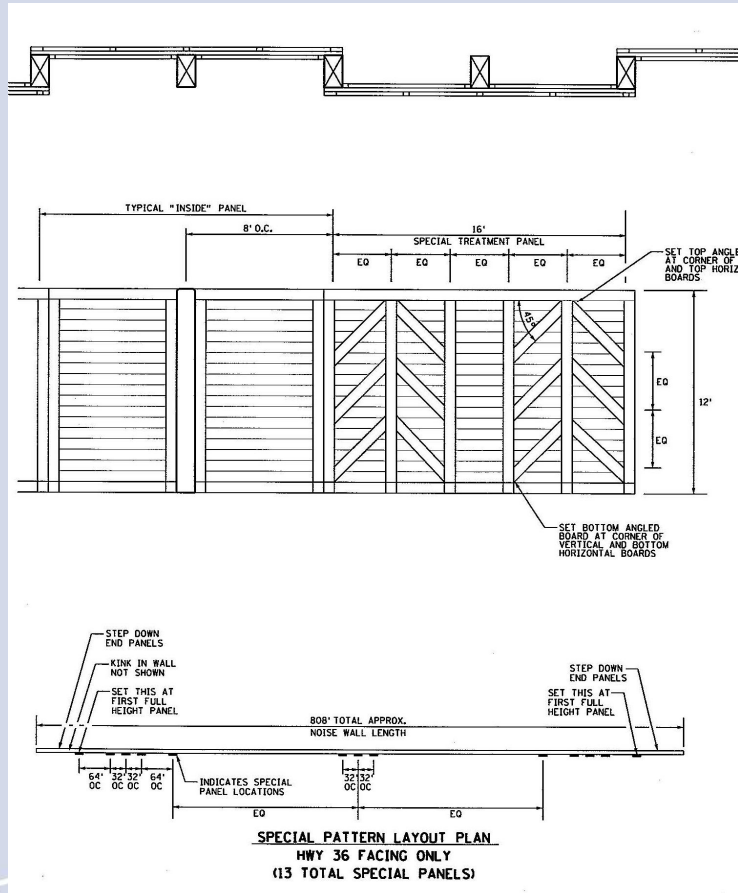
## Retaining Walls

Wing Walls and Abutments

Highway 36/English Street  
Interchange Improvements



# Design Character Study

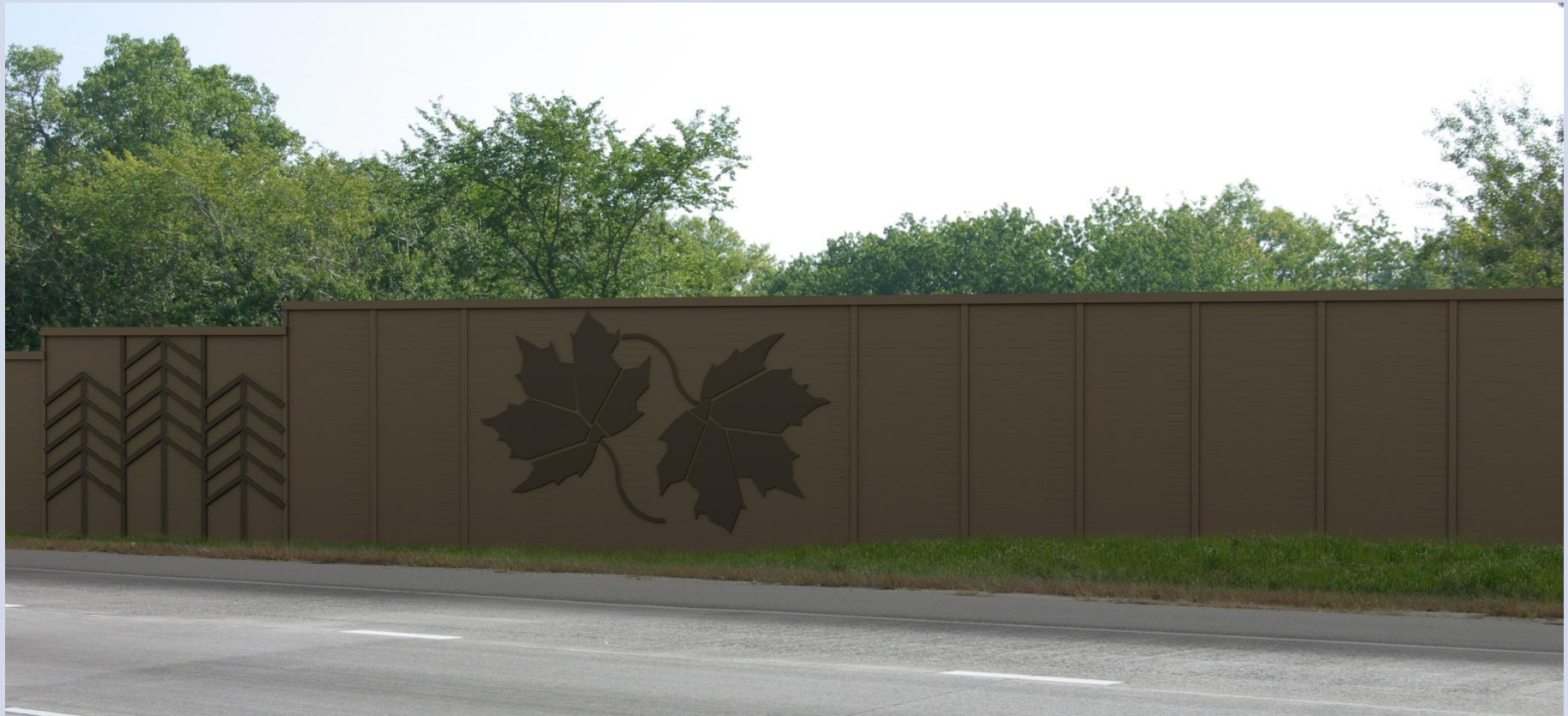


## Noise Barrier

Example A - Rice Street Interchange

Highway 36/English Street  
Interchange Improvements

# Design Character Study



## Noise Barrier

Example B: I-494 west of Lake Rd.

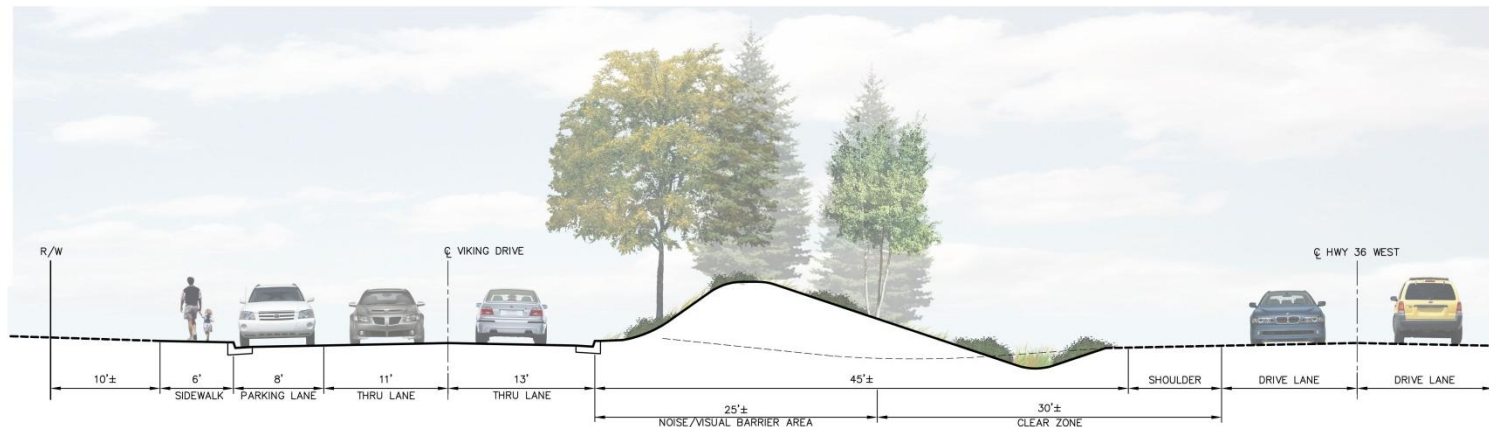
Highway 36/English Street  
Interchange Improvements



# Design Character Study



PROPOSED VIKING DRIVE PLAN VIEW



## Earth Berm and Plantings

Gervais Ave. Improvements -Viking Dr.

Highway 36/English Street  
Interchange Improvements