

Shoal Creek Bridge

CALD44

GENERAL DATA

structure no.:	372000.5	city/town:	3.9 miles of northwest of Kingston
county:	Caldwell	feature inters.:	Shoal Creek
		cadastral grid:	S12/7, T56N, R28W
		highway route:	County Road 372
		highway distr.:	1
		current owner:	Caldwell County

STRUCTURAL DATA

superstructure: steel, 6-panel, pin-connected Pratt through truss, with steel stringer approach spans

substructure: concrete abutments and wingwalls with solid concrete piers

span number:	1	condition:	fair
span length:	120.0'	alterations:	none
total length:	180.0'	floor/decking :	timber deck over steel stringers
roadway width:	13.7'	other features:	upper chord and inclined end post: 2 channels with cover plate and lacing; lower chord: 2 punched rectangular eyebars; vertical: 4 angles with batten plates; diagonal: 2 punched rectangular eyebars; counter: 2 looped round eyerods with turnbuckles; lateral bracing: round rod with threaded ends at top and bottom; strut and floor beam: I-beam; guardrail: 2 angles

HISTORICAL DATA

erection date: 1901

erection cost: \$1710.00 (contract amount)

designer: unknown

fabricator : Illinois Steel Company, Chicago IL

contractor: John H. Sparks, St. Joseph MO

references: Missouri Highway and Transportation Department, Structure Inventory and Appraisal: Structure Number 372000.5; Caldwell County Court Record, Book N: page 403 (3 April 1901), page 415 (22 April 1901) - located at the Caldwell County Courthouse, Kingston MO; field inspection by Lon Johnson, 8 September 1990.

sign. rating: 46

evaluation: NRHP non-eligible (typically configured example of common structural type)

inventoried by: Clayton Fraser and Michelle Crow-Dolby 7 July 1993

HAER INVENTORY

Missouri Historic Bridge Inventory

NAME(S) OF STRUCTURE

Shoal Creek Bridge
MHTD: 372000.5

CALD44

DATE(S) OF CONSTRUCTION

1901

LOCATION

County Road 372 over Shoal Creek; S12/7, T56N, R28W
3.9 miles of northwest of Kingston; Caldwell County, Missouri

USE (ORIGINAL / CURRENT)

roadway bridge / roadway bridge

RATING NRHP non-eligible (score: 46)

CONDITION

fair

OWNER

Caldwell County

span number: 1
span length: 120.0'
total length: 180.0'
roadway wdt.: 13.7'

superstructure: steel, 6-panel, pin-connected Pratt through truss, with steel stringer approach spans
substructure: concrete abutments and wingwalls with solid concrete piers
floor/decking: timber deck over steel stringers
other features: upper chord and inclined end post: 2 channels with cover plate and lacing; lower chord: 2 punched rectangular eyebars; vertical: 4 angles with batten plates; diagonal: 2 punched rectangular eyebars; counter: 2 looped round eyerods with turnbuckles; lateral bracing: round rod with threaded ends at top and bottom; strut and floor beam: I-beam; guardrail: 2 angles

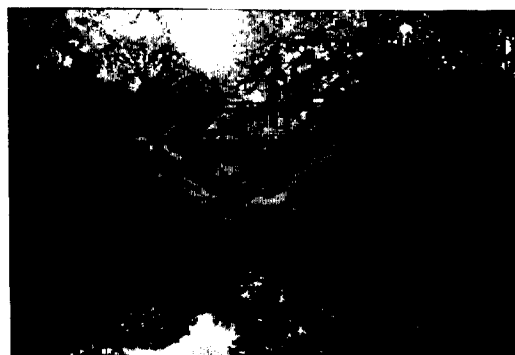
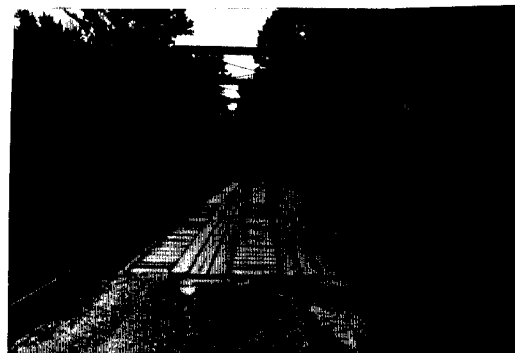
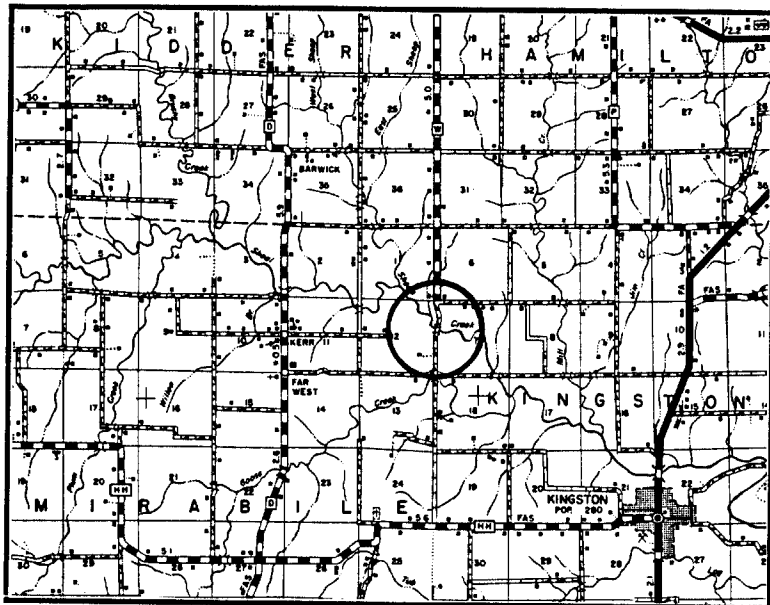
This medium-scale Pratt through truss spans Shoal Creek almost four miles northwest of Kingston, the county seat. The single-span 6-panel structure is approached by two steel stringers on the north and one steel stringer on the south. Carrying County Road 372, the bridge features a timber deck and concrete substructure. According to county court records, on April 3, 1901, Caldwell County officials advertised for competitive bids for a bridge at this location. By the end of the month, a contract had been let to the St. Joseph-based John H. Sparks for the aggregate sum of \$1710.00. Completed by the contractor later the same year using steel components rolled by the Illinois Steel Company, the Shoal Creek Bridge functions in place today. The bridge retains a high degree of structural integrity while being used by local travelers in west-central Caldwell County.

Marketed exclusively by virtually all of the in-state and regional bridge contractors and promoted in the form of standardized designs, the pinned Pratt through truss was widely used by Missouri's counties to carry roads over the state's myriad watercourses. Thousands of such trusses were erected across the state in the late 19th and early 20th centuries, and many remain in place today. A typically configured and well-preserved example of a mainstay bridge type in Missouri.

NAME(S) OF STRUCTURE

Shoal Creek Bridge

PHOTOS AND SKETCH MAP OF LOCATION



LOCATION MAP

TAKEN FROM MISSOURI HIGHWAY AND TRANSPORTATION DEPARTMENT
GENERAL HIGHWAY MAP

SOURCES

Missouri Highway and Transportation Department, Structure Inventory and Appraisal: Structure Number 372000.5; Caldwell County Court Record, Book N: page 403 (3 April 1901), page 415 (22 April 1901) - located at the Caldwell County Courthouse, Kingston MO; field inspection by Lon Johnson, 8 September 1990.

INVENTORIED BY

Clayton Fraser and Michelle Crow-Dolby

AFFILIATION

Fraserdesign, Loveland CO

DATE

7 July 1993