

Whitewater River Bridge

BOLL03

GENERAL DATA

structure no.:	K 663	city/town:	1.4 miles north of Sedgewickville
county:	Bollinger	feature inters.:	Whitewater River
		cadastral grid:	S22/23, T33N, R10E
		highway route:	State Supplementary Route K
		highway distr.:	10
		current owner:	Missouri Highway and Transportation Department

STRUCTURAL DATA

superstructure: steel plate through girder, with steel stringer approach span
substructure: concrete abutments, wingwalls and piers

span number:	3	condition:	good
span length:	100.0'	alterations:	none
total length:	356.0'	floor/decking :	concrete deck over steel stringers
roadway width:	22.0'	other features:	steel angle guardrails

HISTORICAL DATA

erection date: 1936
erection cost: \$34,543.60
designer: Missouri State Highway Department
fabricator : unknown
contractor: Kelly and Underwood

references: Missouri Highway and Transportation Department, Structure Inventory and Appraisal: Structure Number K 663; Primary System Bridge Record, located at the Missouri Highway and Transportation Department, Jefferson City, Missouri; Tenth Biennial Report of the State Highway Commission of Missouri: 1935-36, page 263; field inspection by Richard Collier, 26 March 1992.

sign. rating: 57
evaluation: NRHP possibly eligible (long-span example of MSHD standard beam bridge type)

inventoried by: Clayton B. Fraser 15 April 1992

HAER INVENTORY

Missouri Historic Bridge Inventory

NAME(S) OF STRUCTURE

Whitewater River Bridge
MHTD: K 663

BOLL03

DATE(S) OF CONSTRUCTION

1936

LOCATION

State Supplementary Route K over Whitewater River; S22/23, T33N, R10E
1.4 miles north of Sedgewickville; Bollinger County, Missouri

USE (ORIGINAL / CURRENT)

highway bridge / highway bridge

RATING NRHP possibly eligible (score: 57)

CONDITION

good

OWNER

Missouri Highway and Transportation Department

span number: 3

span length: 100.0'

total length: 356.0'

roadway wdt.: 22.0'

superstructure: steel plate through girder, with steel stringer approach span

substructure: concrete abutments, wingwalls and piers

floor/decking: concrete deck over steel stringers

other features: steel angle guardrails

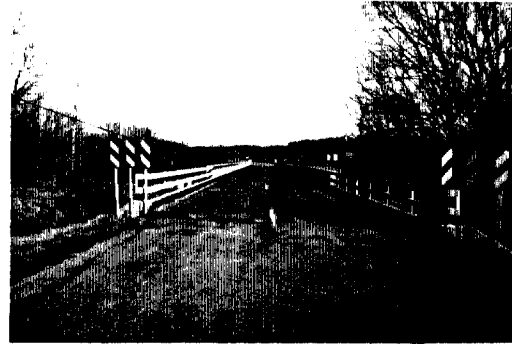
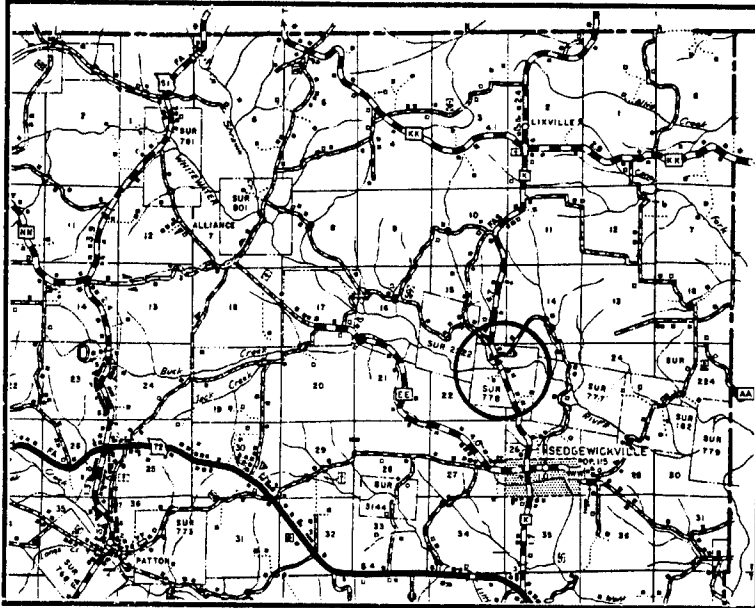
This large-scale crossing of the Whitewater River is located on State Supplementary Route K about 1½ miles northwest of Sedgewickville, in northwestern Bollinger County. Comprised of three 100-foot plate through girder spans and one steel stringer approach span, the structure was designed by the State Highway Department in early spring 1936. A \$34,543.60 contract for its erection was let on April 10, 1936, to Kelly and Underwood. The structure was completed as planned, and it has since carried light to moderate traffic on Supplementary Route K, which extends from State Highway 72 south of the bridge, to Interstate 55 in Perry County to the north. The current Whitewater River Bridge was not the first at this location. In 1913 Miller and Borcharding of St. Louis erected a 170-foot Parker through truss here. Known as the Seabaugh's Mill Bridge, this structure was moved to a location upstream when the new bridge was built in 1936. Located 1½ miles west of its original site, the old Seabaugh's Mill Bridge [BOLL04] still carries local traffic on a gravel-surfaced county road.

The Whitewater River Bridge is one of numerous steel plate through girders functioning in place on Missouri's highway system. Most of these bridges, including this crossing of the Whitewater River, were built in the 1930s, and many are multiple-span examples. Although it ranks among the longest of these, the Whitewater River Bridge is a typical example of a starkly utilitarian design.

NAME(S) OF STRUCTURE

Whitewater River Bridge

PHOTOS AND SKETCH MAP OF LOCATION



LOCATION MAP

TAKEN FROM MISSOURI HIGHWAY AND TRANSPORTATION DEPARTMENT
GENERAL HIGHWAY MAP

SOURCES

Missouri Highway and Transportation Department, Structure Inventory and Appraisal: Structure Number K 663; Primary System Bridge Record, located at the Missouri Highway and Transportation Department, Jefferson City, Missouri; Tenth Biennial Report of the State Highway Commission of Missouri: 1935-36, page 263; field inspection by Richard Collier and Carl McWilliams, 26 March 1992.

INVENTORIED BY

Clayton Fraser and Carl McWilliams

AFFILIATION

Fraserdesign, Loveland CO

DATE

15 April 1992
