

Meramec River Bridge

STLO05

GENERAL DATA

structure no.:	J 421	city/town:	1.8 miles east of Eureka
county:	St. Louis	feature inters.:	Meramec River
		cadastral grid:	
		highway route:	Interstate 44
		highway distr.:	6
		current owner:	Missouri Highway and Transportation Department

STRUCTURAL DATA

superstructure:	steel, 12-panel, rigid-connected Warren deck truss, with steel stringer approach spans		
substructure:	concrete abutments, wingwalls and piers with bullnosed cutwaters		
span number:	3	condition:	good
span length:	130.0'	alterations:	none
total length:	1009.0'	floor/decking :	concrete deck over steel stringers
roadway width:	30.0'	other features:	steel angle guardrails

HISTORICAL DATA

erection date:	1931-32
erection cost:	\$133,592.99
designer:	Missouri State Highway Department
fabricator :	unknown
contractor:	Frazier-Davis Construction Company
references:	Missouri Highway and Transportation Department, Structure Inventory and Appraisal: Structure Number J 421; Primary System Bridge Record, located at the Missouri Highway and Transportation Department, Jefferson City MO.
sign. rating:	63
evaluation:	NRHP possibly eligible (well-preserved example of uncommon structural type, located at regionally important river crossing)

inventoried by: Clayton B. Fraser 2 August 1994

HAER INVENTORY

Missouri Historic Bridge Inventory

NAME(S) OF STRUCTURE

Meramec River Bridge
MHTD: J 421

STLO05

DATE(S) OF CONSTRUCTION

1931-32

LOCATION

Interstate 44 over Meramec River;
1.8 miles east of Eureka; St. Louis County, Missouri

USE (ORIGINAL / CURRENT)

highway bridge / highway bridge

RATING NRHP possibly eligible (score: 63)

CONDITION

good

OWNER

Missouri Highway and Transportation Department

span number: 3
span length: 130.0'
total length: 1009.0'
roadway wdt.: 30.0'

superstructure: steel, 12-panel, rigid-connected Warren deck truss, with steel stringer approach spans
substructure: concrete abutments, wingwalls and piers with bullnosed cutwaters
floor/decking: concrete deck over steel stringers
other features: steel angle guardrails

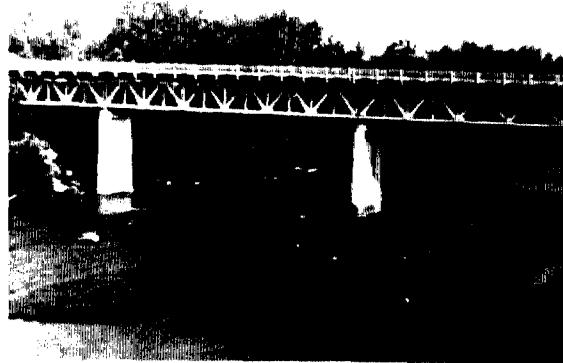
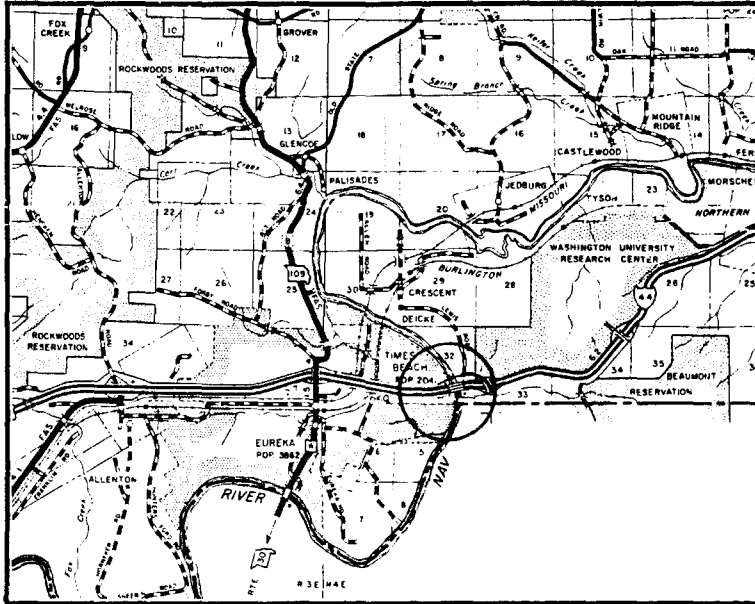
Situated some two miles east of Eureka, this dramatic structure carries Interstate Highway 44 over the Meramec River. Featuring a rare riveted deck truss, the superstructure is supported high above the river by concrete piers and abutments. The design for this three-span bridge was completed in the spring of 1931 by engineers for the Missouri State Highway Department as part of the improvements being made on U.S. Highway 66. A contract for the bridge's fabrication and erection was let that July to the Frazier-Davis Construction Company. Using steel components rolled by the Illinois Steel Company of Chicago, the contractors erected the bridge in 1931-32 for \$133,592.99. Virtually unchanged since its completion, the Meramec River Bridge continues to carry traffic in western St. Louis County.

During the late 19th and early 20th centuries, numerous through and pony trusses were built on roads and highways throughout Missouri. Deck trusses—in which the roadway is carried by the truss's upper chords—were built far less often. Never very common, this truss type has suffered attrition throughout the state, until only seven deck trusses are now listed in Missouri's Structure Inventory and Appraisal list. Significantly, all are located on the state highway system and were built in the 1930s. An important crossing of the Meramec River on Route 66, this three-span truss is both historically and technologically noteworthy—a regionally important remnant of early highway construction in the state.

NAME(S) OF STRUCTURE

Meramec River Bridge

PHOTOS AND SKETCH MAP OF LOCATION



LOCATION MAP

TAKEN FROM MISSOURI HIGHWAY AND TRANSPORTATION DEPARTMENT
GENERAL HIGHWAY MAP

SOURCES

Missouri Highway and Transportation Department, Structure Inventory and Appraisal: Structure Number J 421; Primary System Bridge Record, located at the Missouri Highway and Transportation Department, Jefferson City MO.

INVENTORIED BY

Clayton B. Fraser

AFFILIATION

Fraserdesign, Loveland CO

DATE

4 August 1994