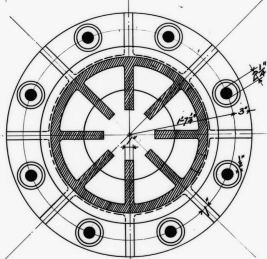
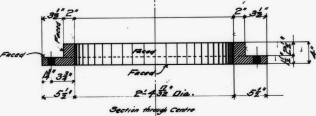
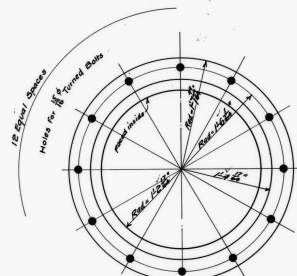


Wanted 1-Cast Steel Ring  
as shown

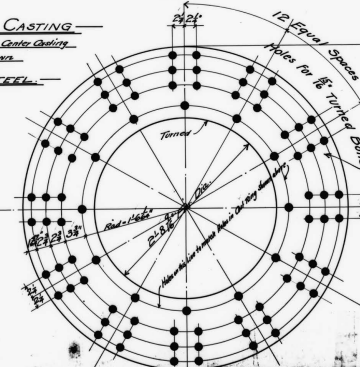


Section A-B

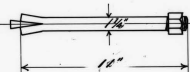


Wanted 1 Cast Steel Ring  
as shown

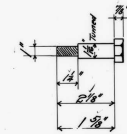
CENTER CASTING  
Wanted 1-Center Casting  
as shown  
CAST STEEL



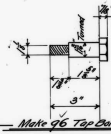
Make 64 Stone Bolts as shown  
For Anchoring Leveling Pits



Make 32 Stone Bolts as shown  
For Anchoring Segments of Rock

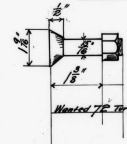


Make 62 Top Bolts 2 1/2" long  
For Bolting Track to Center  
Make 450 Top Bolts 1 3/4" long  
For Bolting Track to Center & Leveling Pits



Make 96 Top Bolts  
For Bolting Rock to Leveling Pits

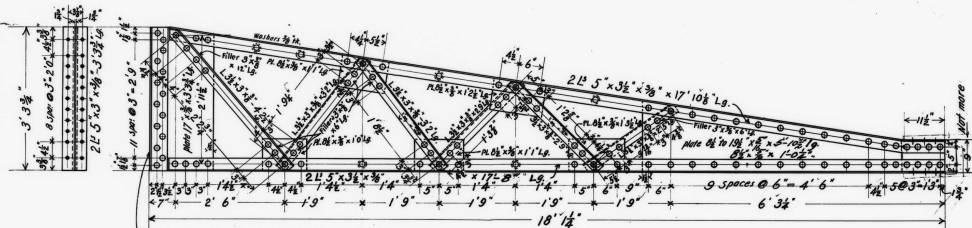
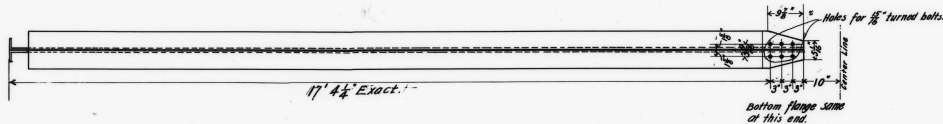
Wrought Plate 8" Thick  
4'-10" Dia.  
Wanted 1-Plate as shown. Holes for  
8"-P Turned Bolts



Wanted 72 Turned Bolts to Splice  
outside ring for  
Turner

2"	Wanted 12 Turned Bolts	72 Bolt Ringing Plate to Cast Ring at Center of Center
7"	216	72 Bolt Ringing Plate to Cast Ring at Center of Center
1 1/2"	24	24 Bolt Ringing Plate to Cast Ring at Center of Center
1 1/2"	72	72 Bolt Ringing Plate to Cast Ring at Center of Center
1"	48	48 Bolt Ringing Plate to Cast Ring at Center of Center
4 1/2"	144	144 Bolt Ringing Plate to Cast Ring at Center of Center

PASSAIC ROLLING MILL CO.  
PATERNON, N. J.  
CONTRACT C-326  
Checked by  
FILE 70 SHEET 10



Core must be taken to make face of strut exactly square with bottom.

Rivets  $\frac{3}{8}$ "

Holes for same unless otherwise marked.

12 Struts wanted, Mark DA.

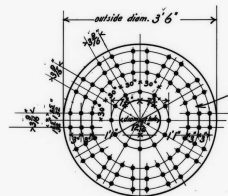


plate  $\frac{5}{8}$ " thk. x 3' 6" diam.  
2 Required, Mark PA.

Holes for  $\frac{1}{2}$ " turned bolts.

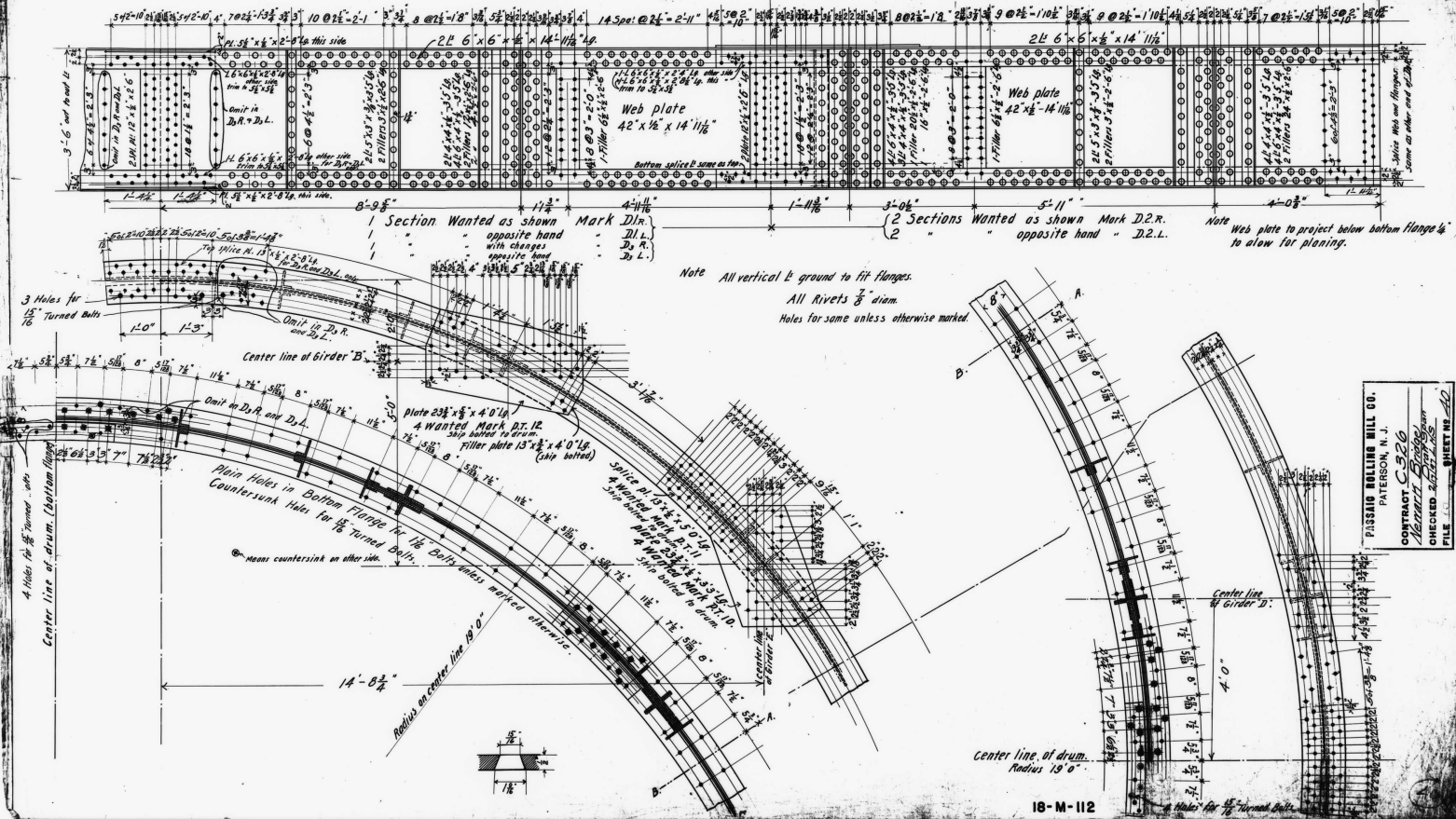
PASSAIC ROLLING MILL CO.  
PATERSON, N. J.

CONTRACT C\*326

Drawn Spec. by Passaic River, Newark

CHECKED 2/17/97 LMS

FILE 75 SHEET NO. 35

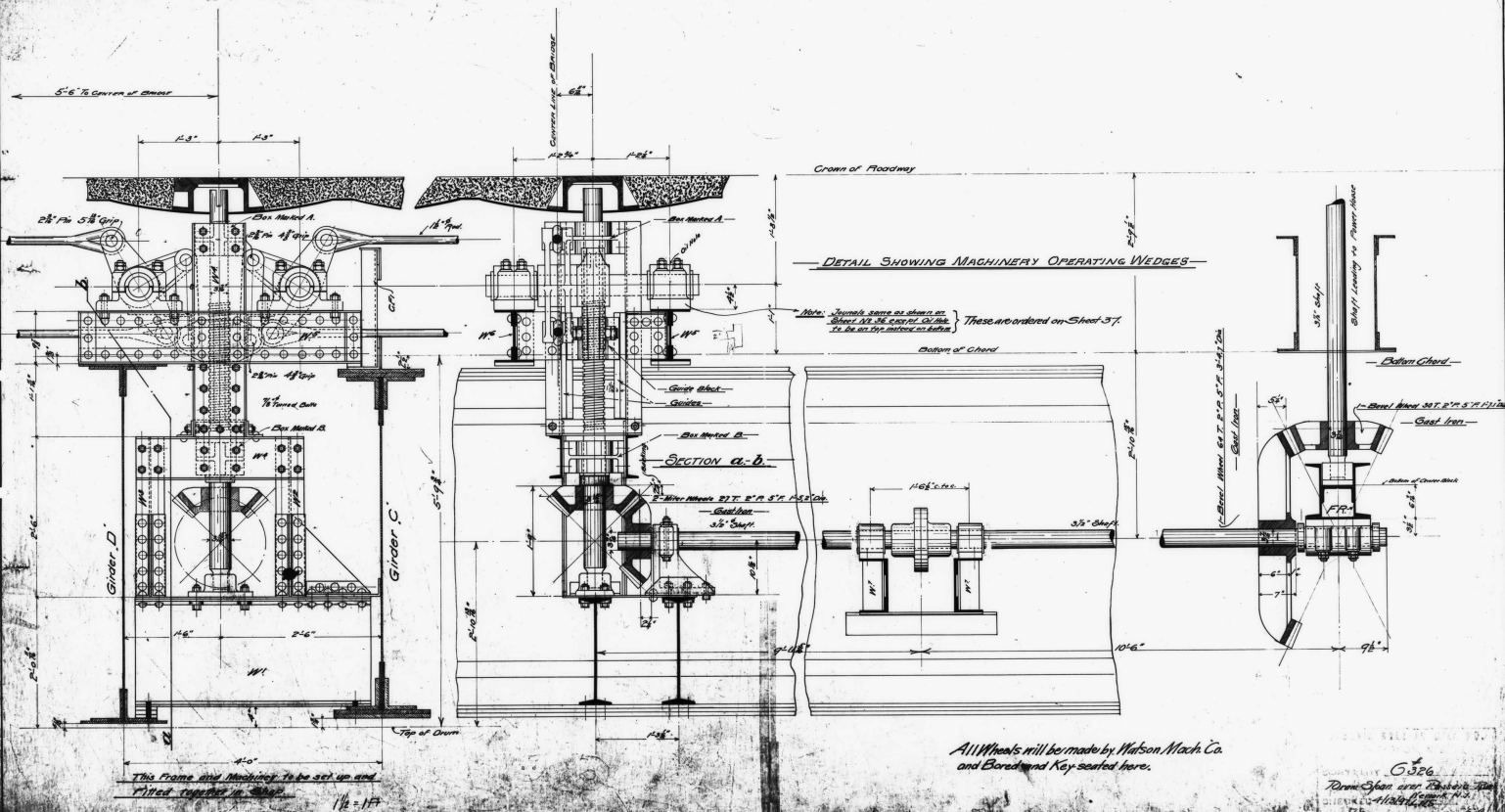












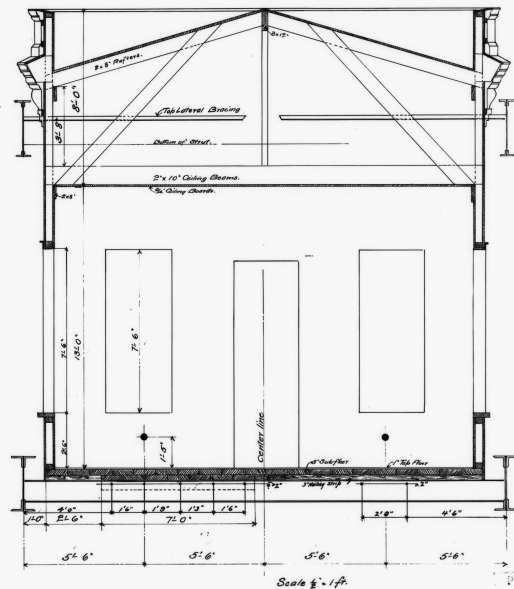
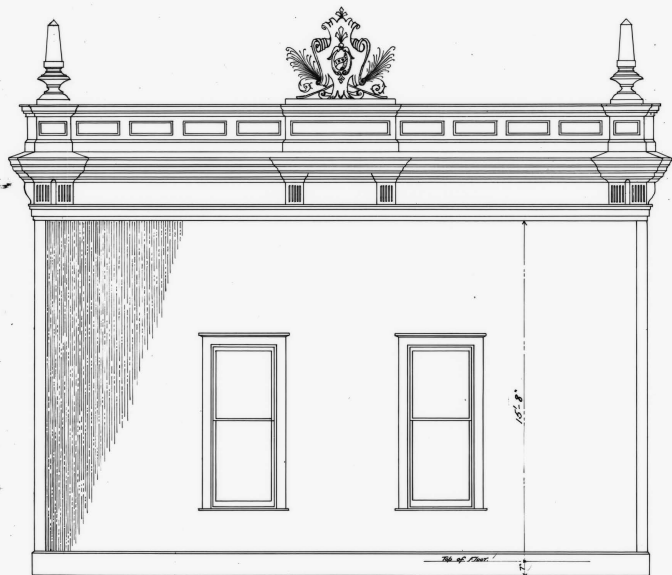
*All Wheels will be made by Watson Mach. Co.  
and Bored and Key seated here.*

6326  
From Spain over Basque Sea  
DIED 4/13/47  
FILE 75 SHEET NO. 354

No 89







PASSAIC ROLLING MILL CO.  
 PATERSON, N. J.  
 CONTRACT C-326  
 Newark Bridge Draw Span.  
 CHECKED  
 FILE SHEET NO. 66

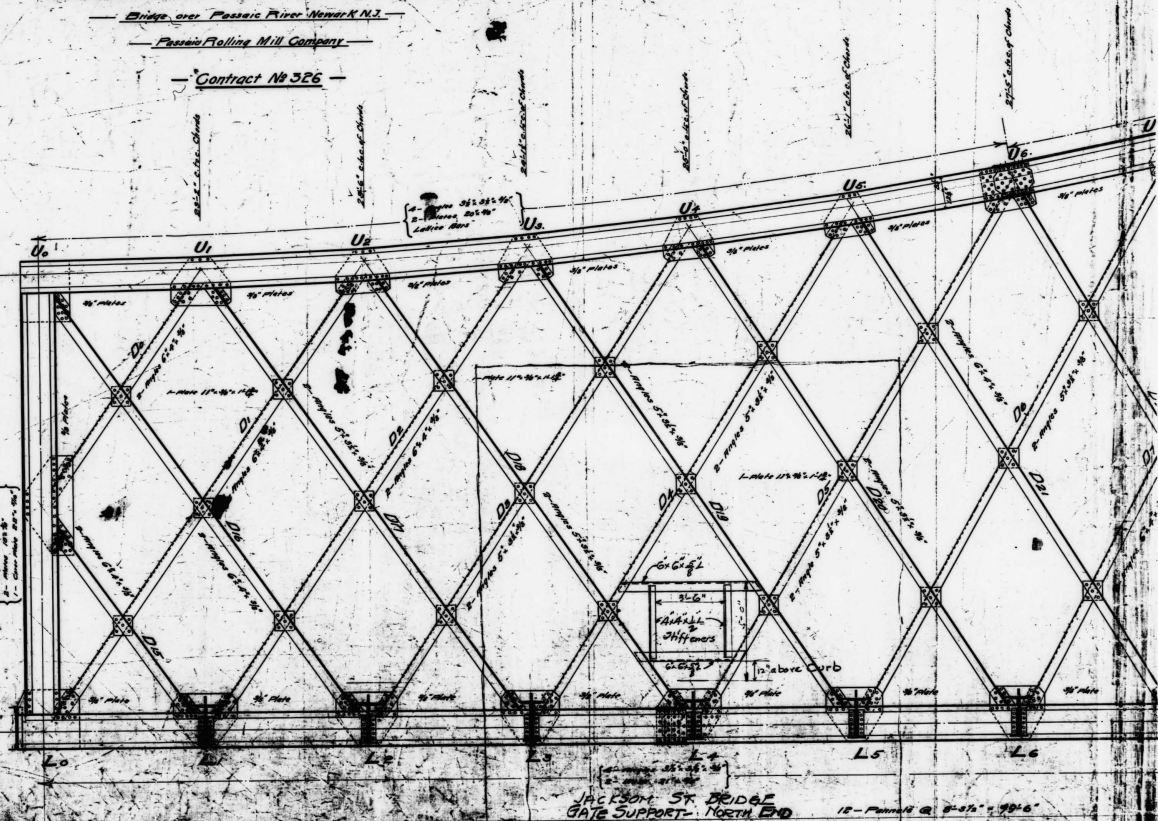


### GENERAL DRAWING OF DRAW SPAN

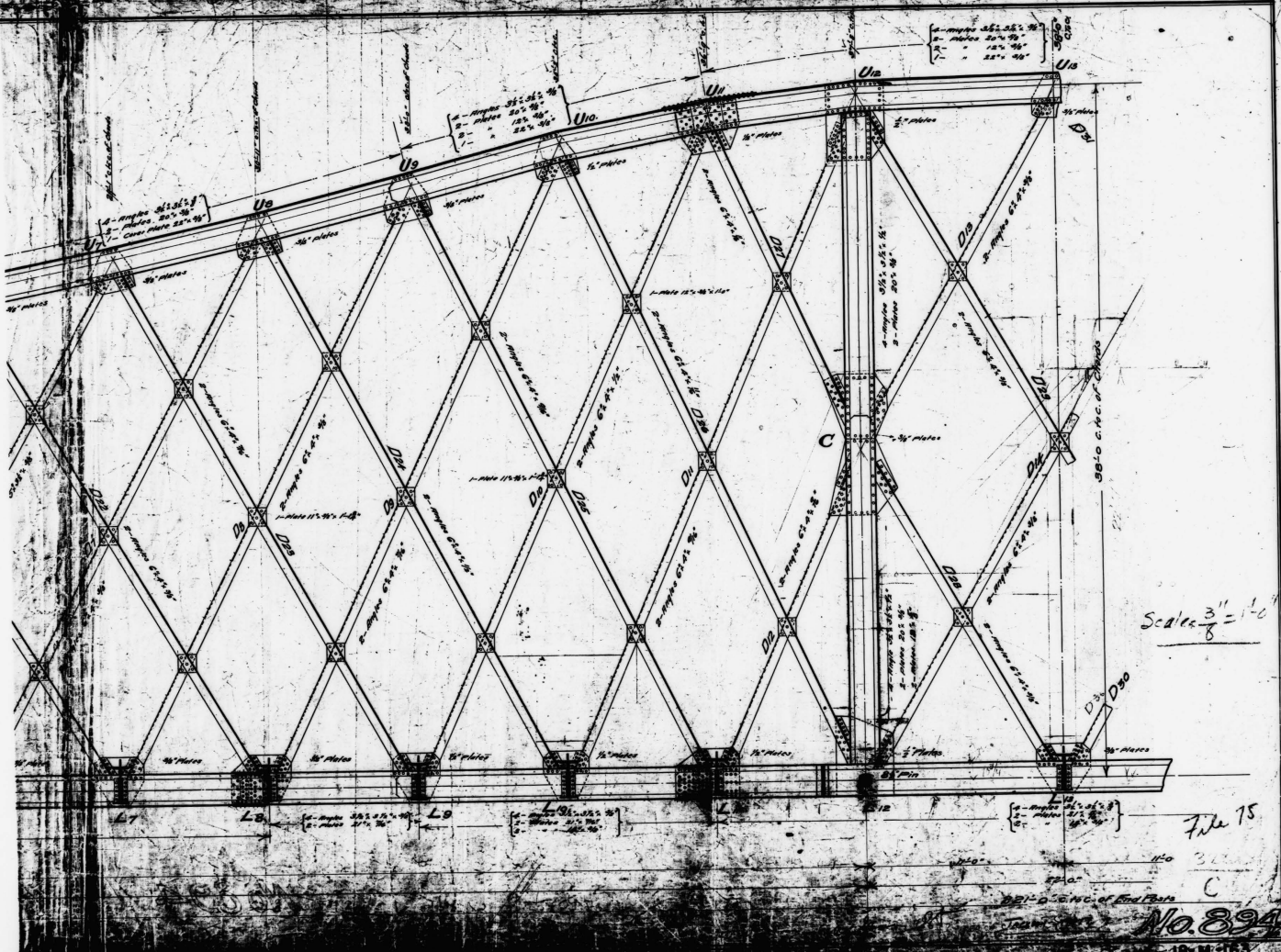
Bridge over Passaic River Newark N.J.

Passaic Rolling Mill Company

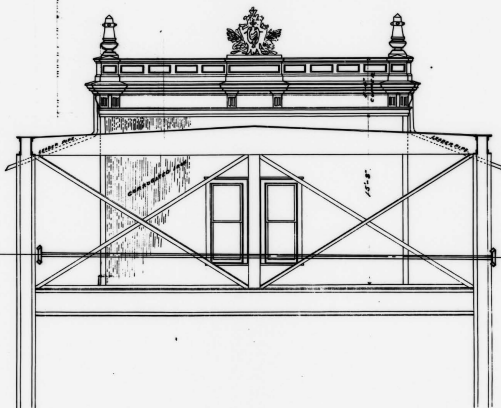
Contract № 326



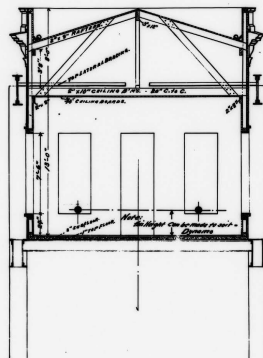




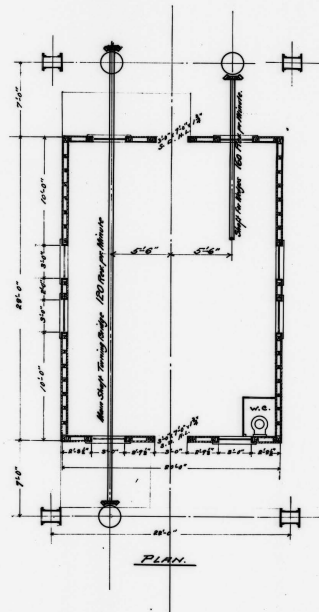
PLAN, ELEVATION AND SECTION  
 OF  
 MOTORHOUSE FOR BRIDGE OVER PASSAIC RIVER,  
 BETWEEN  
 JACKSON ST. NEWARK, AND FOURTH ST. HARRISON.  
 N. J.  
 Scale 1/4" = 1'-0"



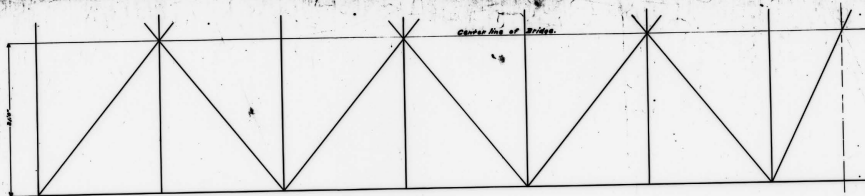
FRONT ELEVATION.



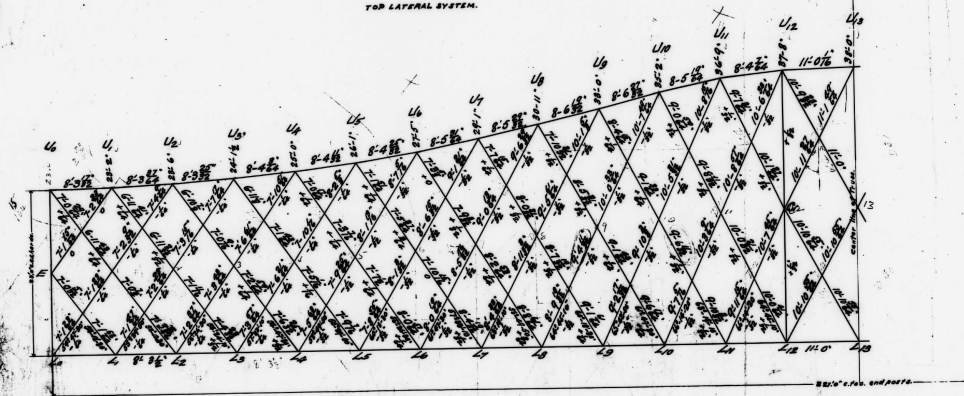
SECTION.



PLAN.



TOP LATERAL SYSTEM.



DRAW SPAN.