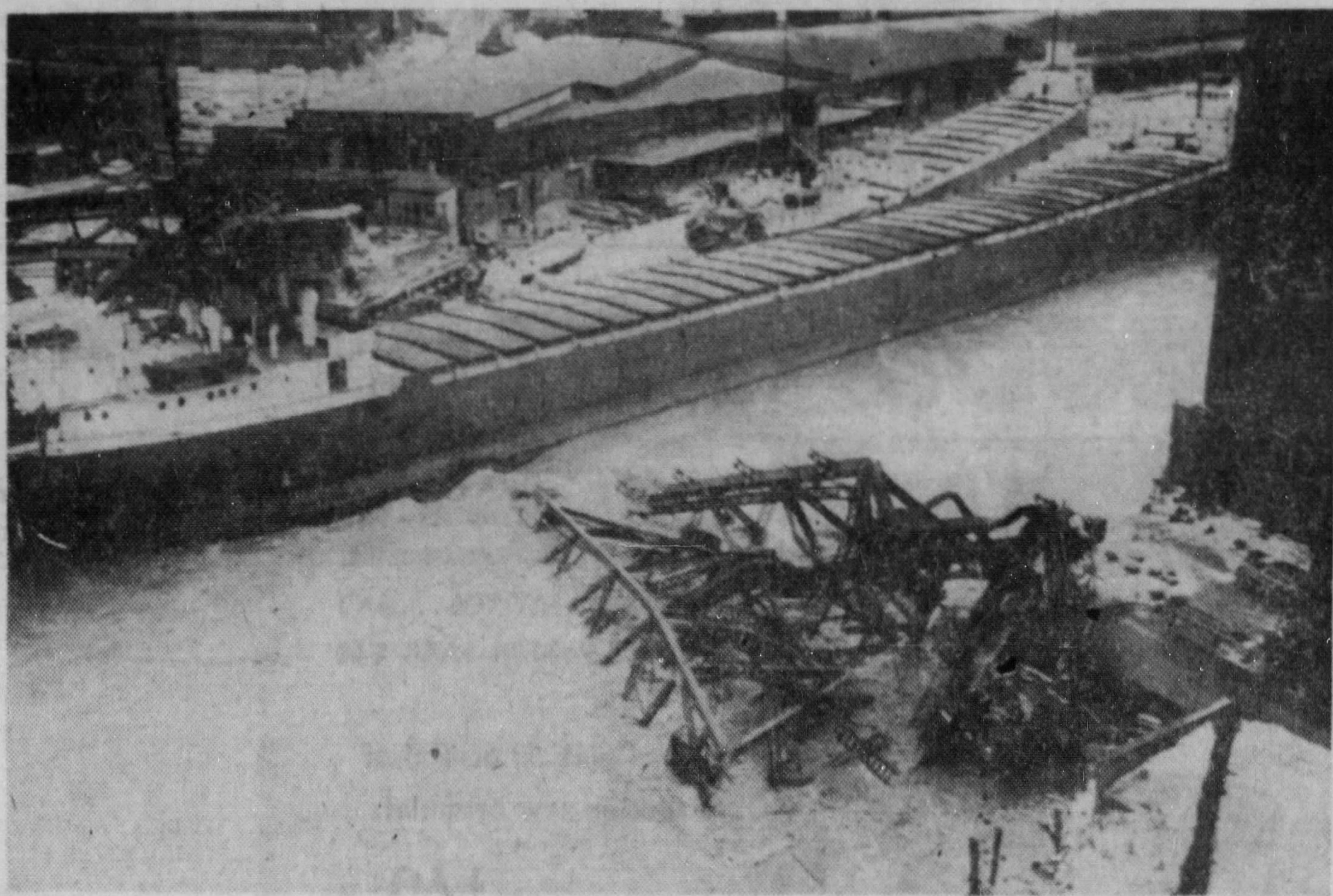


Frigid Cold Wave, Floodwaters Kill 75 Persons Across Nation



COLLISION IN BUFFALO — All that's left of the Michigan Avenue bridge in Buffalo is tangle of scrap

iron in rushing waters of Buffalo River after huge, drifting grain freighter slammed against it. (AP)

Mills Closed, Thousands Homeless

By The Associated Press

Winter's savage snow, sleet and rainstorms tapered off Thursday but a cold wave intensified the misery of thousands and floodwaters put a big dent in industrial production.

At least 75 were dead from drowning or as a result of storm conditions extending from New Mexico to the Atlantic seaboard.

Storm damage ran into uncounted millions.

Thousands were homeless in flooded areas of Ohio, Kentucky, New York, Pennsylvania and Indiana.

Other thousands were thrown out of work when big manufacturing plants and coal mines shut down operations in stricken eastern communities. Stores, schools and offices closed and travel was difficult if not impossible in some areas.

Cold Adds to Misery

Arctic air settled over much of the Eastern two-thirds of the nation adding to the misery of the storm sufferers.

The cold eased flood conditions in some areas, but many downstream points still faced the threat of later damage and evacuations.

Ohio reeled under the worst deluge of flood waters in more than a quarter century. At least 10 persons drowned and others were missing and feared dead.

Ohio River tributaries subsided during the day, but traffic was hampered nearly everywhere as the high waters washed out bridges and poured over highways. Some evacuees began trickling back to their homes but thousands still were in emergency quarters in schools, lodge halls and other buildings.

Some 3,000 persons were evacuated from their homes in Mont Vernon, Ohio, alone. The city manager estimated damage there at two million dollars.

Some of Ohio's drowning toll resulted from overturned boats and cars plunging into the floodwaters.

Hundreds Flee Homes

Hundreds fled their homes in western Pennsylvania when rain-swollen and ice choked rivers and creeks swirled out of their banks.

Thousands were made idle in the Pittsburgh and other Pennsylvania areas. Turbulent, ice-packed rivers halted water transportation and closed steel mills and some coal mines.

Both Allegheny and Ludlum Steel Corp. and Crucible Steel Co. closed their steel plants because they were unable to get clean water to operate cooling systems in the melting department. Crucible laid off 7,000 workers but Allegheny Ludlum had no immediate count on the idle.

Jones & Laughlin Steel Corp. closed two mines near the Monongahela River in California, Pa., because coal could not be transported. About 2,100 miners were affected.

Consolidated Coal Co. closed its mine at Harmar, Pa., because of high water on the Allegheny River.

Even though flood waters receded in many communities, normal life was impossible. Big industrial plants closed in Columbus, Youngstown, Springfield, Dayton, Newark, Mount Vernon and elsewhere in Ohio.

The Red Cross in Washington estimated 9,500 families suffered losses from floods in Ohio, Pennsylvania, New York and Indiana.

Most downtown business establishments and some industrial plants shut down at Sharon, Pa., when the Shenago River flooded basements. Officials predicted damage there would exceed two million dollars.

Another trouble spot in Pennsylvania was the ice-choked Allegheny River, which with the Monongahela River forms the Ohio River at Pittsburgh. Some flooding of low lying sections was expected at Pittsburgh.

New Freeze Grips Flood-Hit Buffalo

Destruction In Millions

BUFFALO, Jan. 22 (AP) — Floodwaters receded across New York State today as a cold front moved in from the west, and hard-hit South Buffalo surveyed damages estimated in the millions of dollars.

Cazenovia Creek in South Buffalo carried huge chunks of ice over its banks, battering homes and automobiles.

A 525-foot freighter loaded with grain broke loose from its moorings in the Buffalo River and smashed the Michigan Avenue Bridge into a 'tangle of scrap metal. The loss was \$5,000,000, authorities said.

At least five people died as a result of the weather in the state. One man was found in a submerged automobile on Delaware Avenue in the heart of Buffalo. He was identified as Salvatore Davita, 51, of suburban Kenmore.

Steel Plant Closed

The Republic Steel Corp. plant in South Buffalo, which employs 3,000, was forced to close. Water flooded the boiler rooms.

The picture in the rest of the state was much the same, although not as severe as in Buffalo. Scores of people were evacuated in the Salamanca area when the Allegheny River rose a foot above flood level. About 40 families were evacuated from Chenango River lowlands near Binghamton.

Overflowing streams flooded basements and blocked roads in many river valleys. Scores of schools were closed. Hundreds of people forced from their homes found refuge in churches and public buildings.

After the short thaw yesterday, winter was back again today. Winds with gusts up to 77 mph pounded the state and caused widespread, but not serious, damage.

Snow Belts Hit

Snow squalls moved in from the West. The snow belts off the east ends of Lakes Erie and Ontario bore the brunt, as usual. In Lewis County, near Lake Ontario, four inches of snow fell in two hours. The Weather Bureau said a foot or more was on the way for these areas.

The City of Lackawanna, south of Buffalo, was under a state of emergency. At one time six square miles of the city was flooded.

For Buffalo, the flash flood in the south section was one of the worst in the city's history.



FLOOD IN BALDWINSVILLE—Used cars sit wheel deep in flood waters that inundated used car lot in Baldwinsville near Syracuse. (AP Wirephoto)

Tonawanda Creek Floods Hamlet, Troopers Evacuate More than 100

BATAVIA, Jan. 22—Blocked by a huge ice jam at Bushville, three miles west of here, flood waters of the Tonawanda Creek inundated several homes and a trailer camp along West Main Street Road this afternoon, causing the evacuation of over 100 persons.

Families removed from the flooded area, some in boats manned by Troopers, were being housed in the Medical Science Building at Genesee Memorial Hospital and at the Iroquois Gas Corp. building on the north side of the West Main Street Road.

Sheriff Frank L. Gavel late this afternoon ordered the evacuation of all homes south of Route 5 in the area immediately east of Bushville where swirling water and big ice floes threatened to damage the properties. Sheriff's deputies led residents from their homes.

The flood situation was one of the worst in the area, although the City of Batavia had some low-lying areas under water. In the city, the Tonawanda reached

a crest of 11.26 feet above normal at 12:25 p.m. It dropped a foot in the next two hours and then began rising slowly but the city engineering department said there was little danger of its climbing further. Sub-freezing temperatures had halted water flowing into the creek.

The ice jam, extending a mile back from the Route 5 bridge over Tonawanda Creek, piled huge floes in the stream and halted the flow of water. As a result, the rampaging waters cut a new stream just to the north of the creek bank, swirling around homes and re-entering the regular creek channel at the Route 5 bridge.

A smaller bridge over a side road at Bushville was clogged with ice and there was some danger it might be seriously damaged. The water swept over the road at that point. The

Friends Church at Bushville was completely surrounded, as was the Steak House Restaurant just to the east of the hamlet.

Occupants of 25 trailer homes at the Dreamland Trailer Park at Bushville were evacuated by Troopers as the waters rose. A few were able to move their trailers to higher ground but most were stationary and could not be moved. By evening water was running across the floors of some of the trailers.

Water also was swirling inside the Steak House, a popular spot for visitors to Batavia Downs. The interior of the restaurant recently was remodeled.

Elmer B. Adelman, Red Cross disaster chairman for Genesee County, said there are sufficient facilities to take care of those forced to evacuate their homes. Cots were being set up in the Iroquois Gas Corp. building and at the hospital.

On the Inside

Showcase Trial Opens: 15,000 Cubans jeer first defendant. On Page 3.

High Winds Buffet Area: Cold checks flooding. On Page 15.

Frigid Cold Wave, Floodwaters Kill 75 Persons Across Nation



Mills Closed, Thousands Homeless

COLLISION IN BUFFALO—All that's left of the Western Avenue bridge in Buffalo is a jumble of wreckage.

New Freeze Grips Flood-Hit Buffalo

Destruction In Millions

BUFFALO, Jan. 22 (AP)—A frigid cold wave, which could have meant a freeze in the north and had to be held back in the south, has now struck Buffalo.



FLOOD IN BALDWINVILLE—Used auto cars all wheel deep in flood waters that will near Syracuse. (AP Wirephoto)

Tonawanda Creek Floods Hamlet, Troopers Evacuate More than 100

ATATONAWANDA, Jan. 22—A flood of 125 feet above French Church at Buffalo was the cause of the Tonawanda Creek flood here today, which has inundated several homes and a city engineer's department.

The Tonawanda Creek flood here today, which has inundated several homes and a city engineer's department, was caused by a heavy rain storm which fell on the creek basin in the Tonawanda area.

On the inside
The flood situation was very serious in the Tonawanda area, with many homes and businesses under water.

By The Associated Press
Winter's severe storm, which has killed 75 persons across the nation, has a toll which is mounting in Buffalo and Tonawanda and in other areas in western New York.

At least 75 were dead from the storm, or a total of 114 if it includes the 39 who died in the Tonawanda area in the Buffalo area.

At least 75 were dead from the storm, or a total of 114 if it includes the 39 who died in the Tonawanda area in the Buffalo area.

At least 75 were dead from the storm, or a total of 114 if it includes the 39 who died in the Tonawanda area in the Buffalo area.

Clipped By: **historicbridges**
Thu, Jun 30, 2022

