

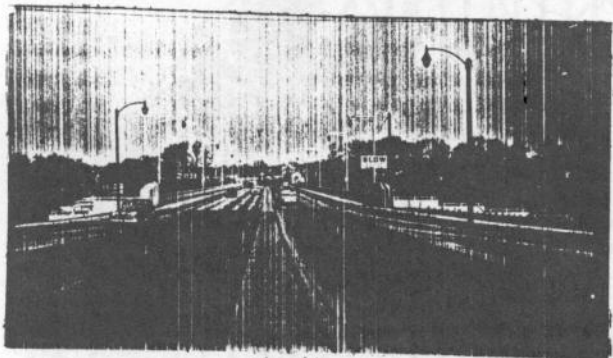
Right



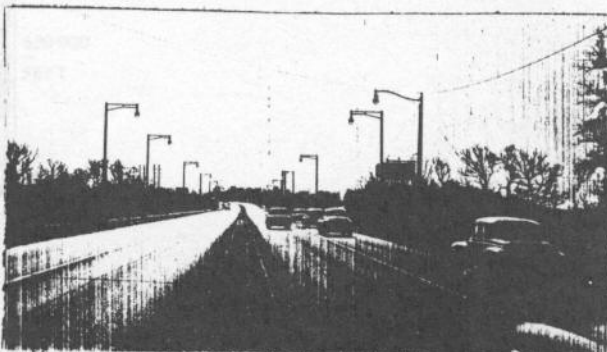
Left



Rear



North



South

Notes: ... on bridge double faced ... barrier ... road placed at chr. of bridge

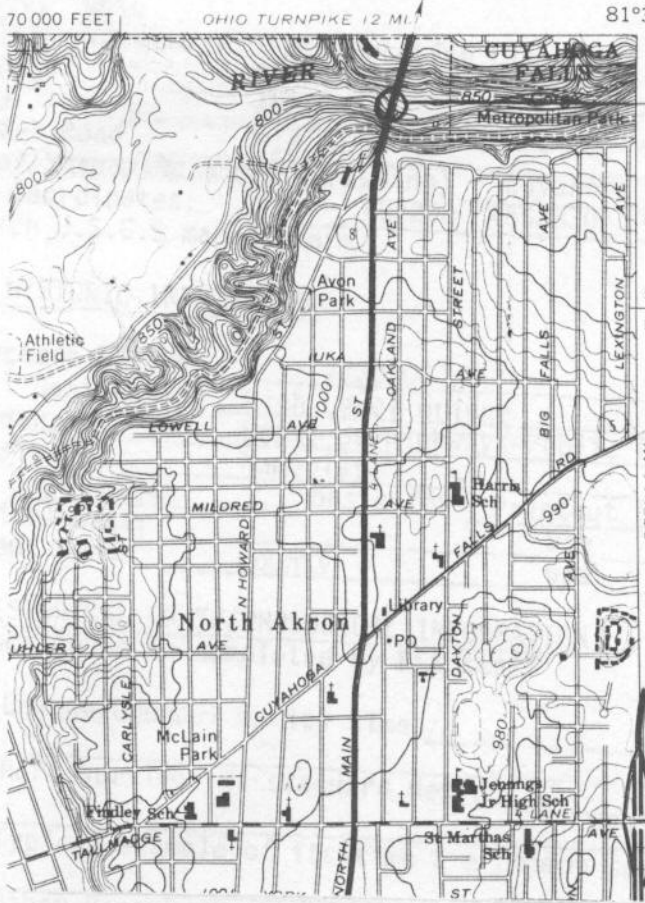
COUNTY	Summit	BRIDGE NUMBER	Su-8-124	STATION	7+43.75
DESIGNED	Wilbur Watson Associates,	CHECKED	Cleveland, Ohio.	REVIEWED	DATE
ESTIMATED PRICE	\$1,348,681.50	CONTRACT PRICE	\$1,577,864.55	LETTING DATE	12-2-47.
CONTRACTOR AND ADDRESS	Bates & Rogers Construction Corp.,	111 W. Washington St.,	Chicago, Illinois.	COMPLETION DATE	Started 2-2-48 9-9-49
FEDERAL AID PROJECT NO.	U-495-7	PROPOSAL NO.	472	CONTRACT NO.	9586

SFN-7700482

AKRON WEST QUADRANGLE
OHIO-SUMMIT CO.
7.5 MINUTE SERIES (TOPOGRAPHIC)

INVENTORY FORM
4786 III NW
(HUDSON)

Select
FOR PCS USE



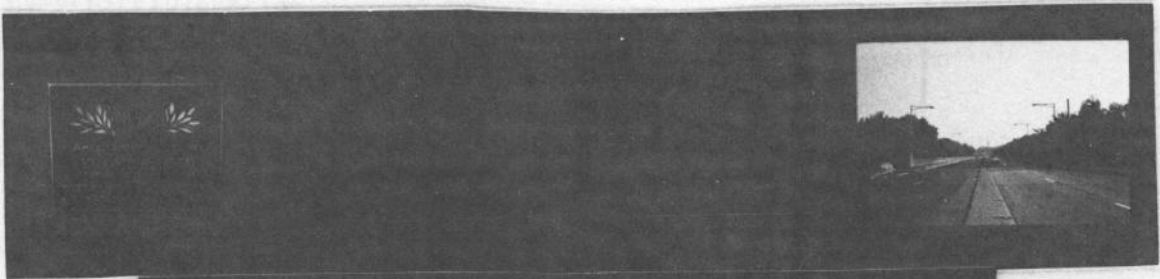
81°30'
41°07'30"

SF # 7730306

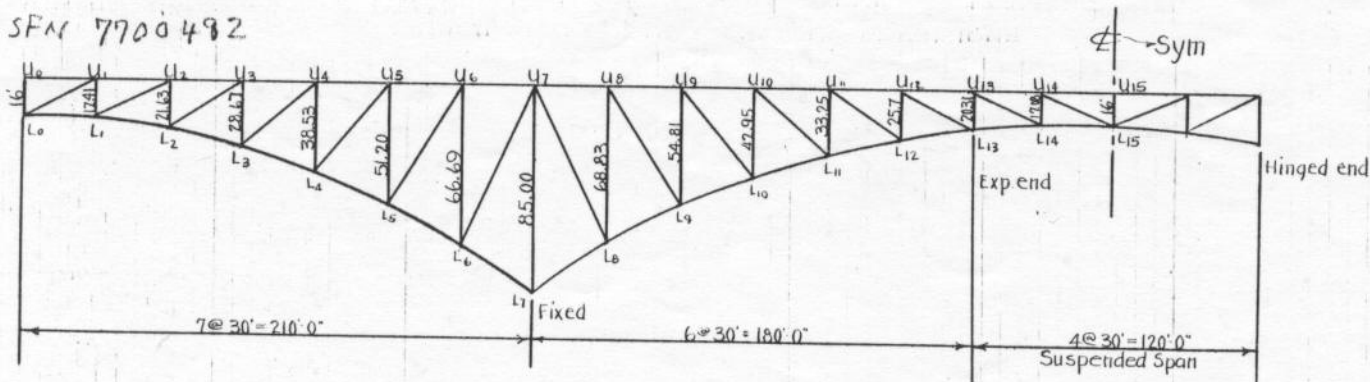
4552
530 000
FEET

[Faint handwritten notes]

Designed by
Walter Watson &
Assoc.
Bethlehem Steel
Plant



SFN 7700482



Revised → SFN 7700482

REMARKS

Profile Grade 0.00%; Fieldpainting Struc.Stl., 5,322,000#
 16" Water main 23'-0 1/2" r.t. of ϵ below Fl.Bm.
 Fabricator & Contractor: Bethlehem Steel Co. Rankin
 2-8" Gas mains 27'-0 3/4" & 28'-2 1/4" r.t. of ϵ below Fl. Bm

Note: 4' wide steel median removed. 8" WF31 post with double face I15 deep p.m. gd. rail barrier placed. Post welded to top of ctr. 24 WF80# stringer thru 12" hole out in floor. 1958

See Photostat

