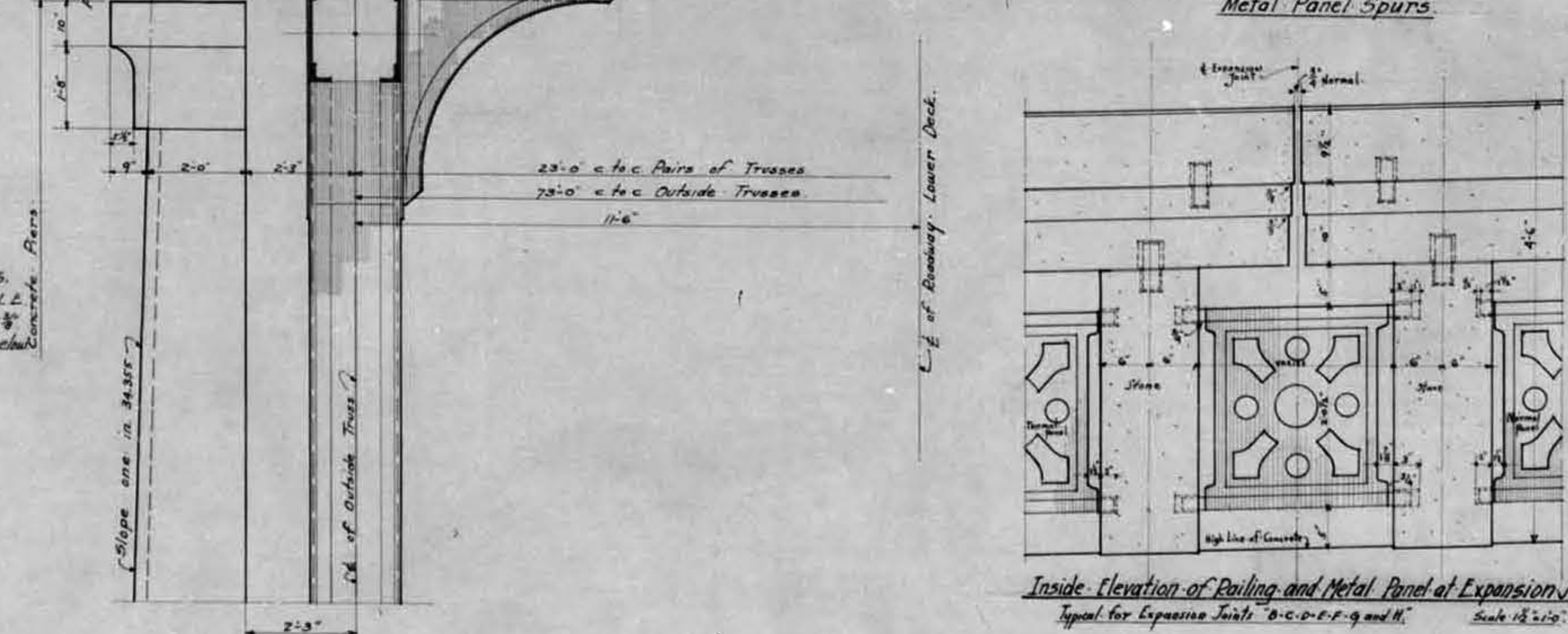
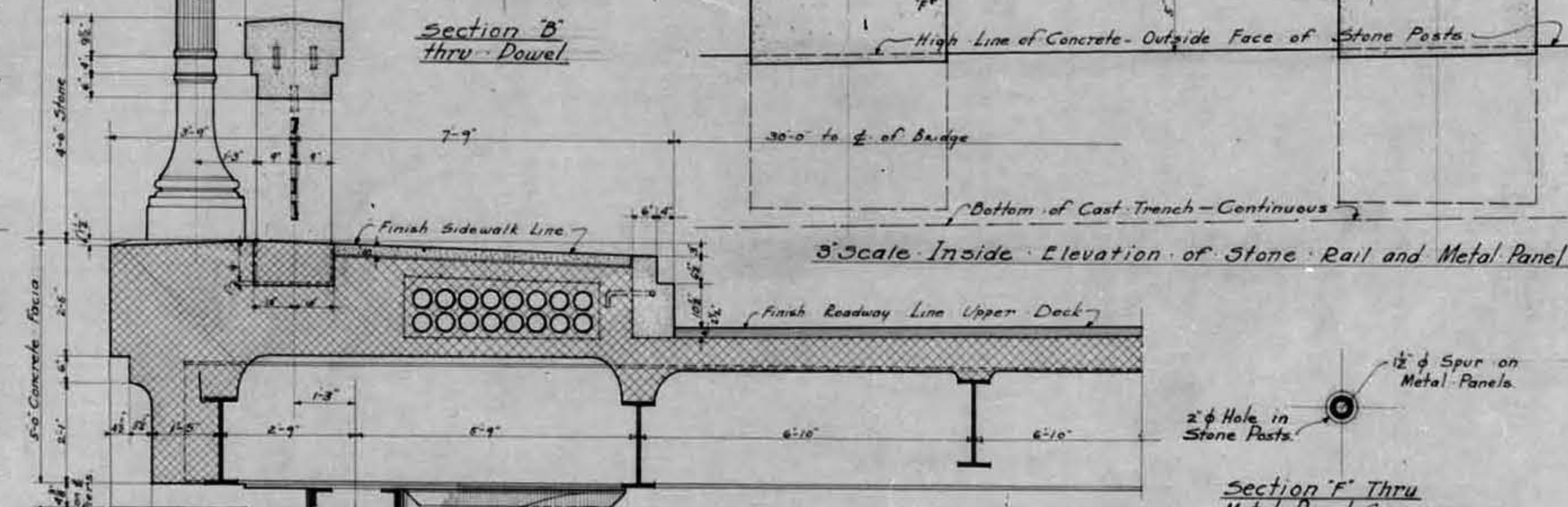
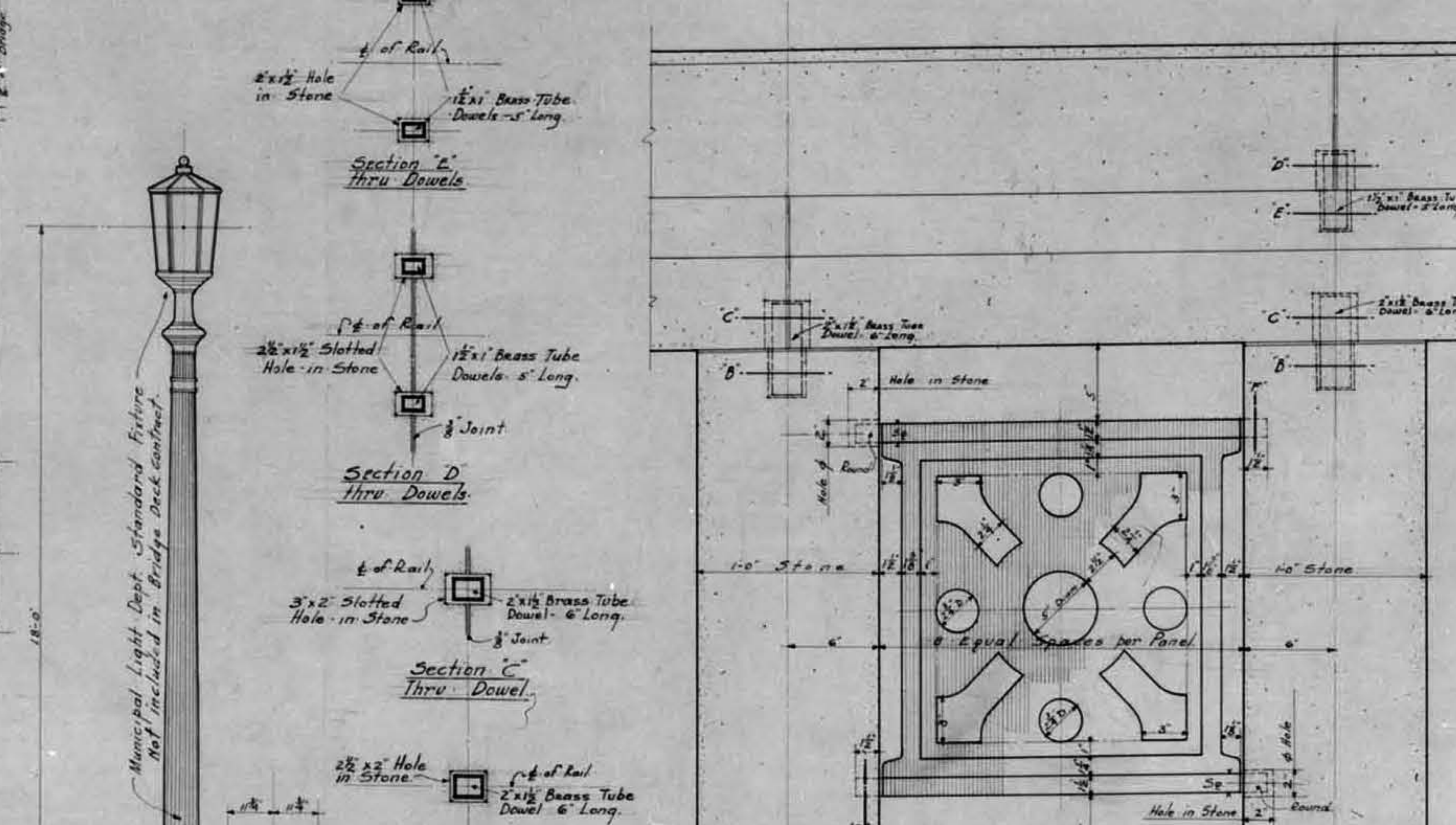
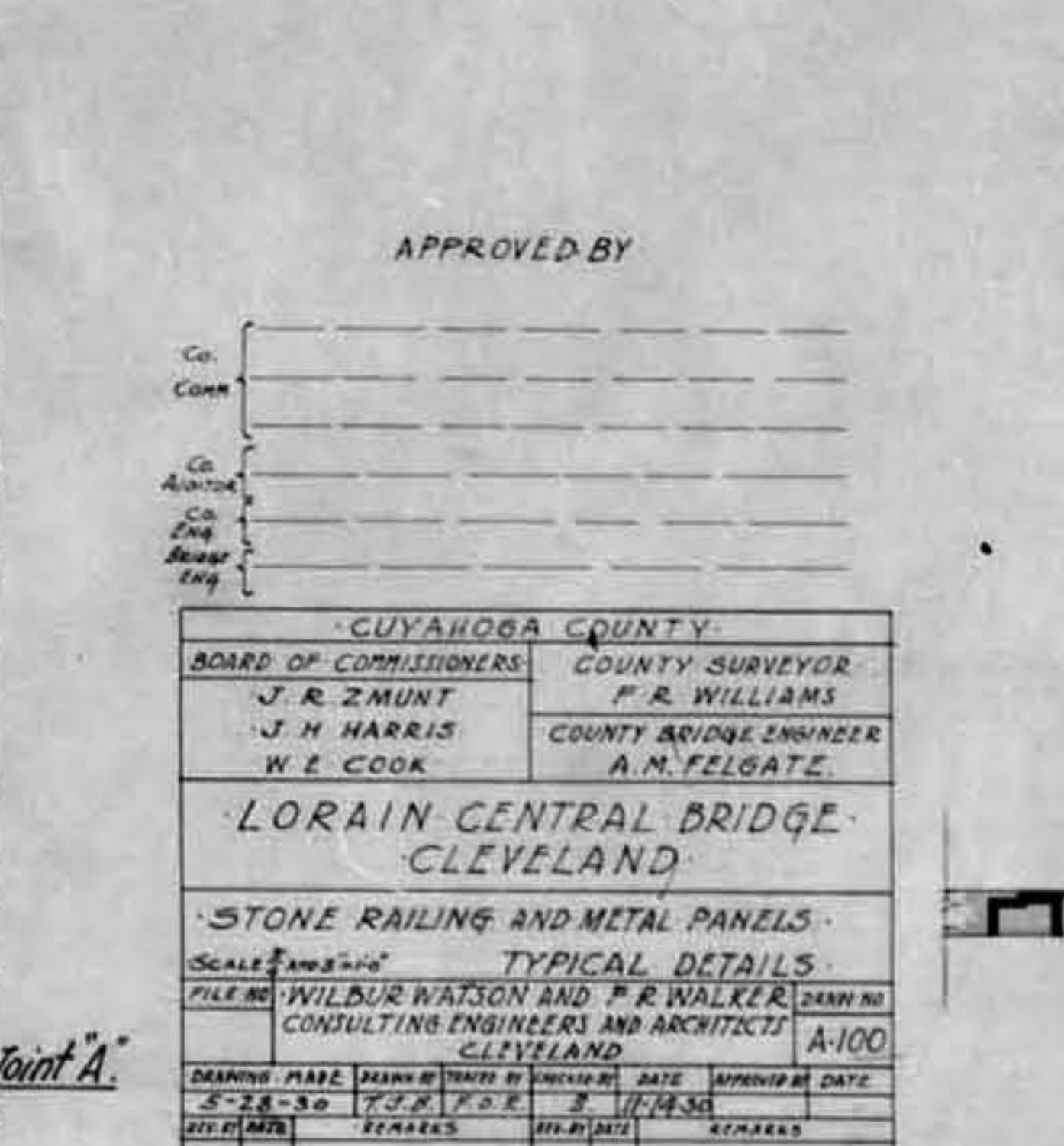
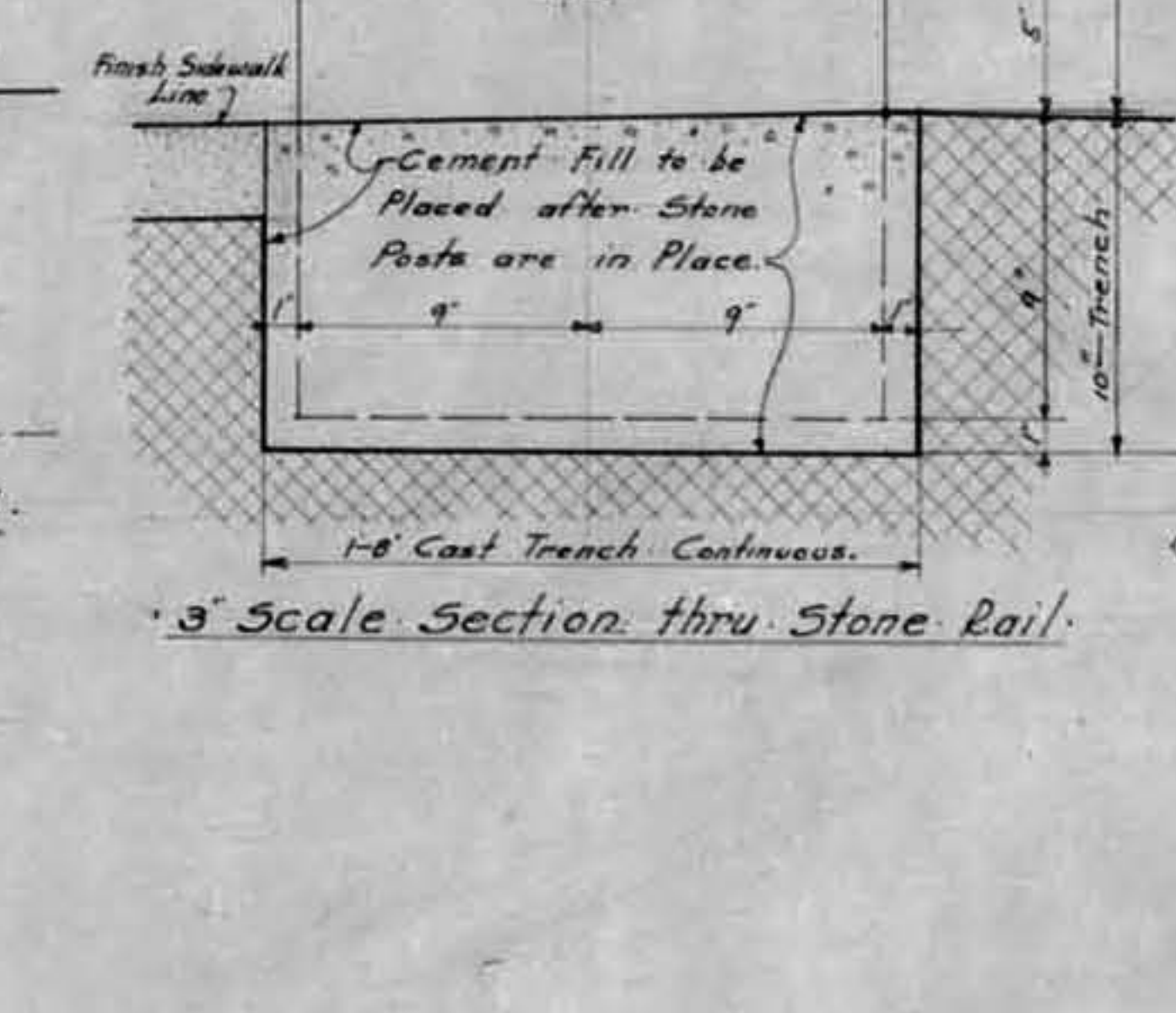
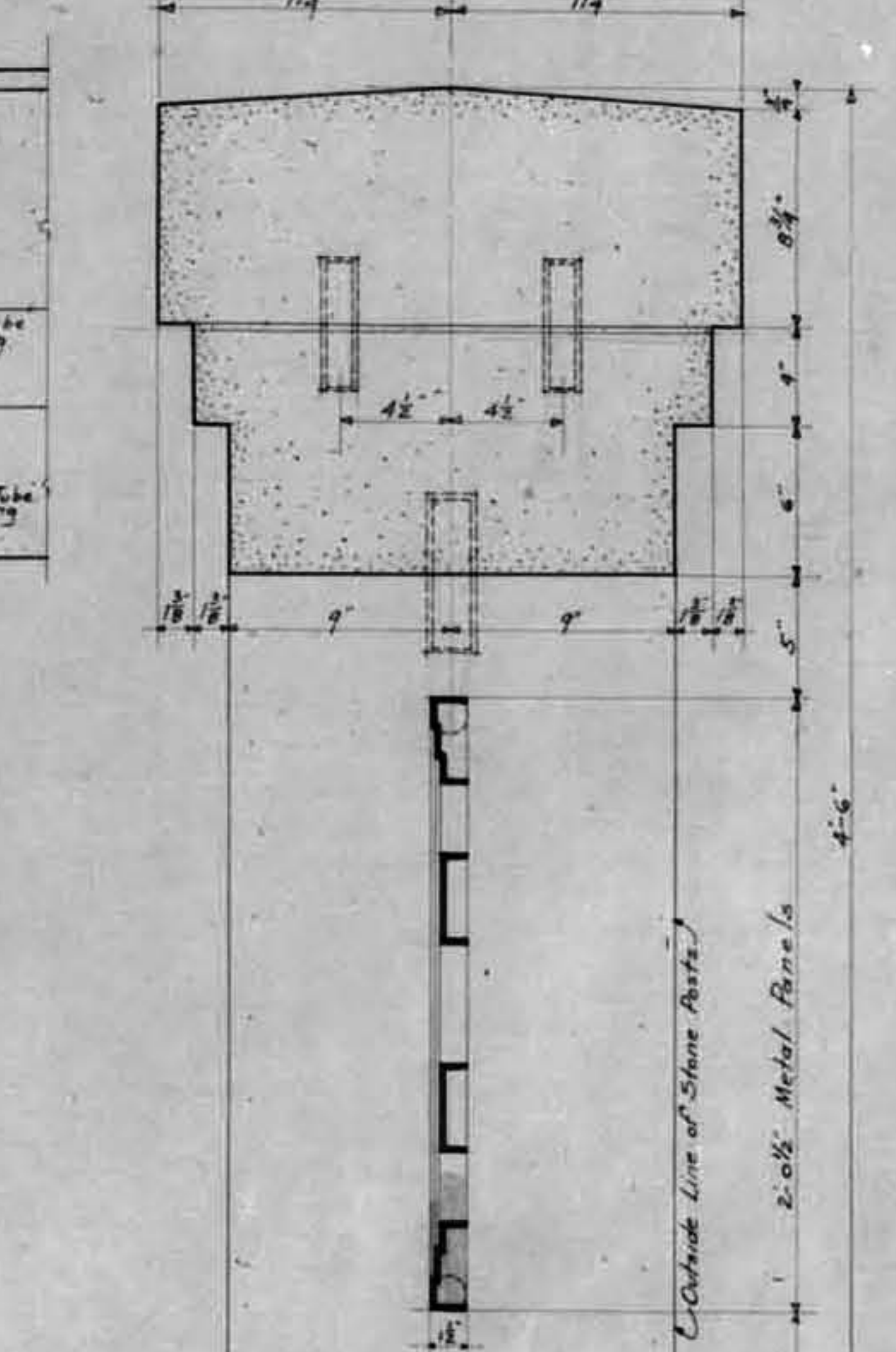


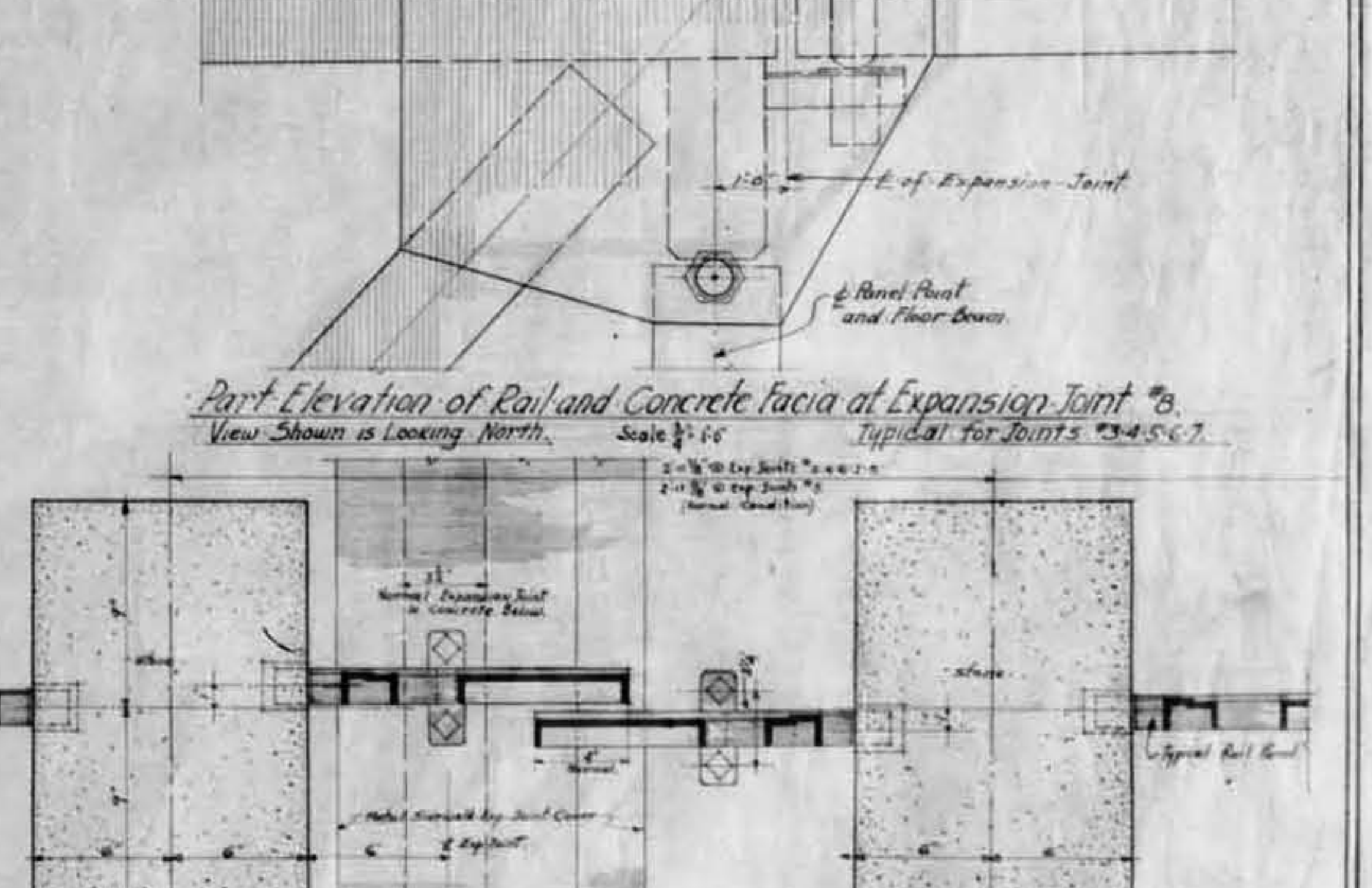
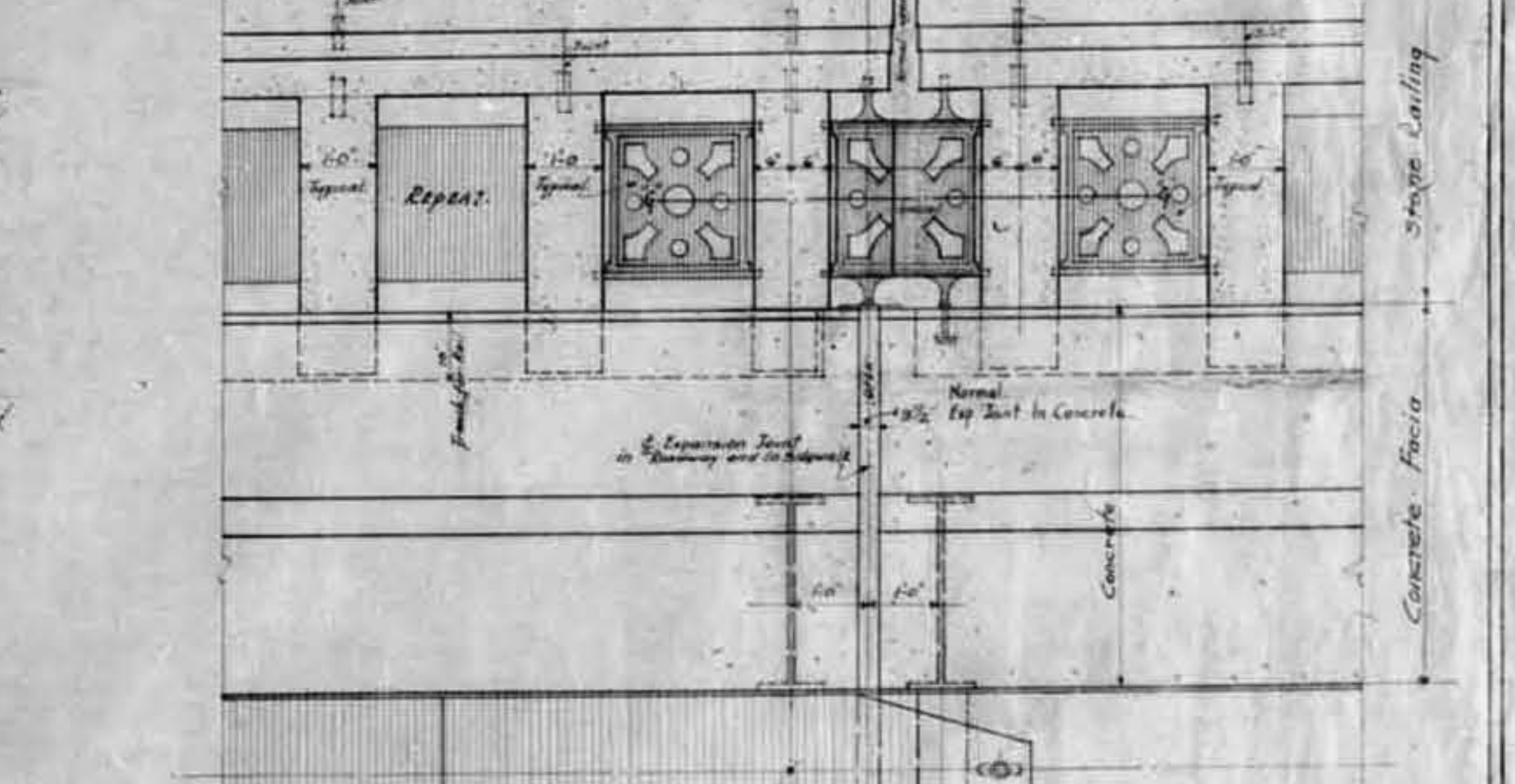
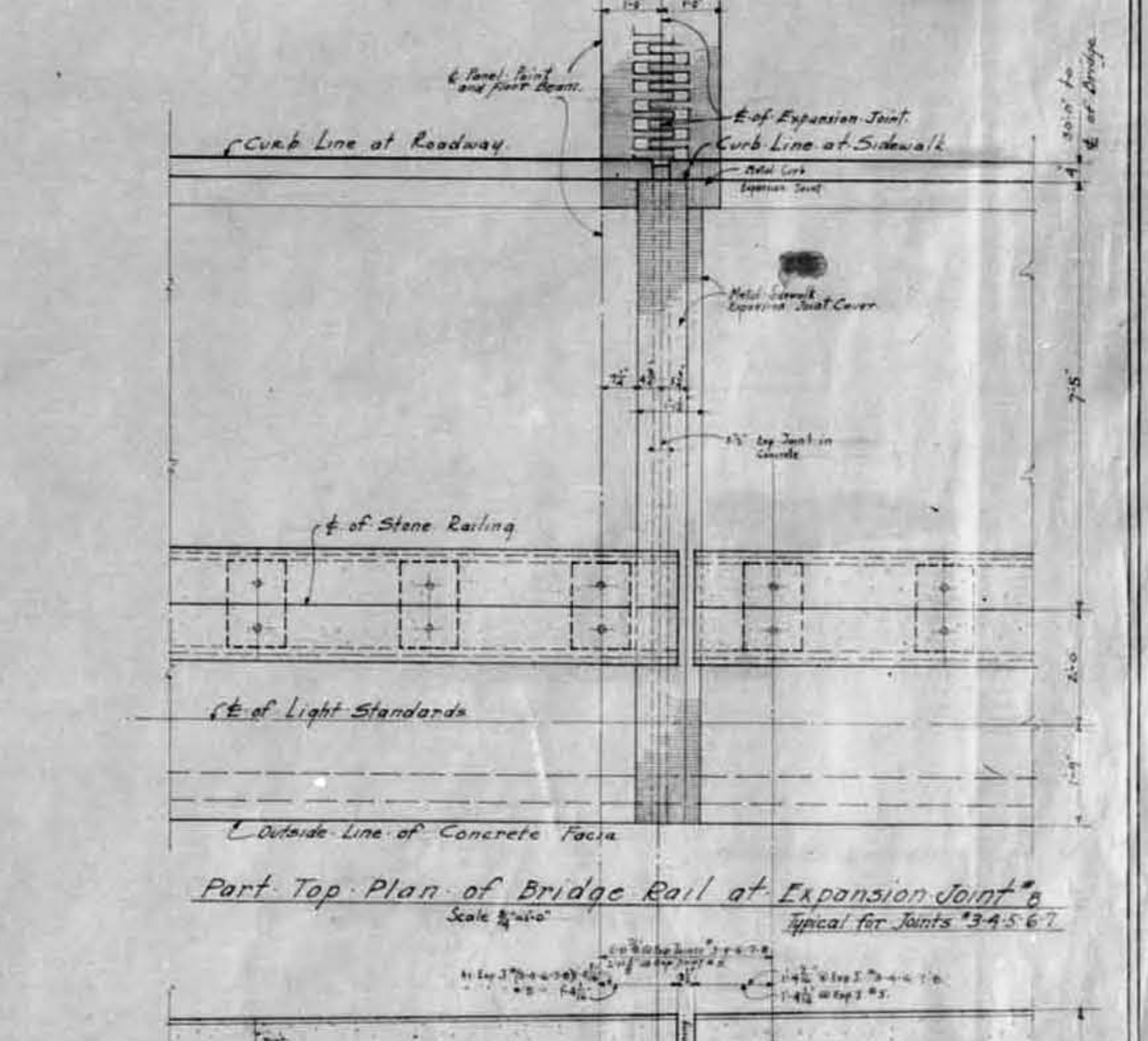
Part Elevation of Stone Rail and Concrete Facia - Typical for Entire Bridge.



Part Section on Line A-A Upper Deck - Typical for Entire Bridge.



Part Elevation of Rail and Concrete Facia at Expansion Joint.



Part Elevation of Rail and Concrete Facia at Expansion Joint.

NOTE:  
Truss Panels are 23'-9" for Span No. 6.  
Truss Panels are 23'-10" for Span No. 5.  
Truss Panels are 22'-2" for Span No. 1.  
Truss Panels are 21'-10" for W.L.E. Span.  
c.c. Stone Posts of Rail = 1/2 of Panel Spans 5 & 6.  
c.c. Stone Posts of Rail = 1/2 of Panel Spans 1 & 2.  
c.c. of Steel Posts West of West Pylons = 23'-6".  
c.c. of Stone Posts West of West Pylons = 1/2 of Panels below.

APPROVED BY

CON.	
GR.	
ASST.	
CH.	
ENG.	

CUYAHOGA COUNTY.  
BOARD OF COMMISSIONERS COUNTY SURVEYOR  
J. R. ZMUNT COUNTY ENGINEER  
J. H. HARRIS COUNTY BRIDGE ENGINEER  
W. E. COOK COUNTY ENGINEER  
A. M. FELGATE COUNTY ENGINEER

LORAIN CENTRAL BRIDGE  
CLEVELAND

STONE RAILING AND METAL PANELS - TYPICAL DETAILS  
FILED WILBUR NATION AND F. E. WALKER ENGINEERS AND ARCHITECTS  
CLEVELAND A-100  
DRAWING MADE BY WILBUR NATION AND F. E. WALKER DATE SEPTEMBER 1910  
CHECKED BY WILBUR NATION AND F. E. WALKER DATE SEPTEMBER 1910  
DESIGNED BY WILBUR NATION AND F. E. WALKER DATE SEPTEMBER 1910