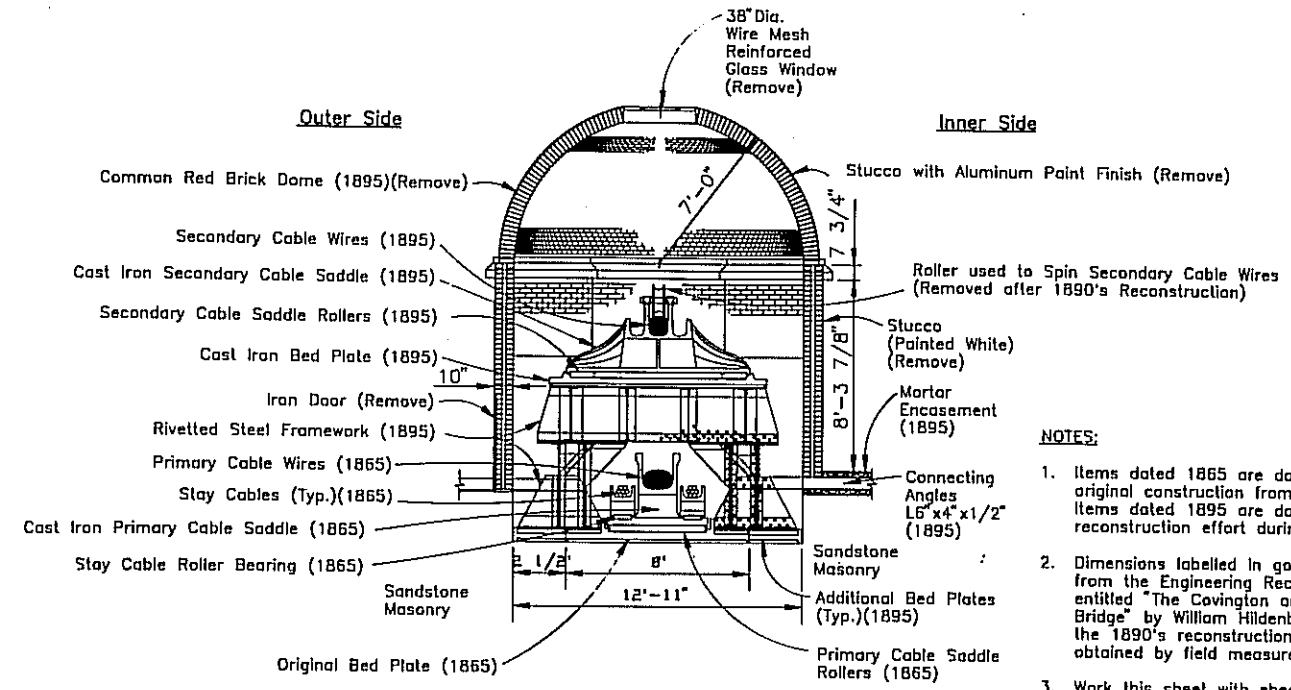
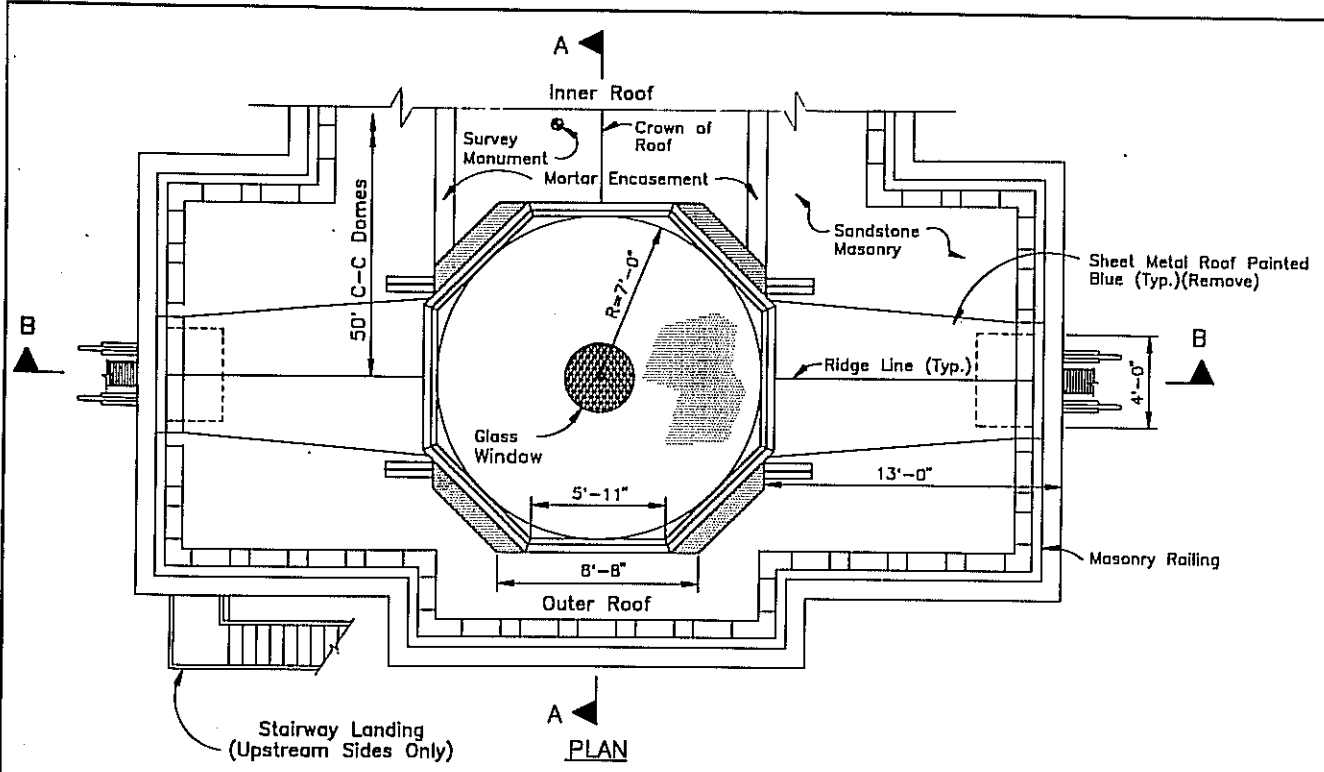
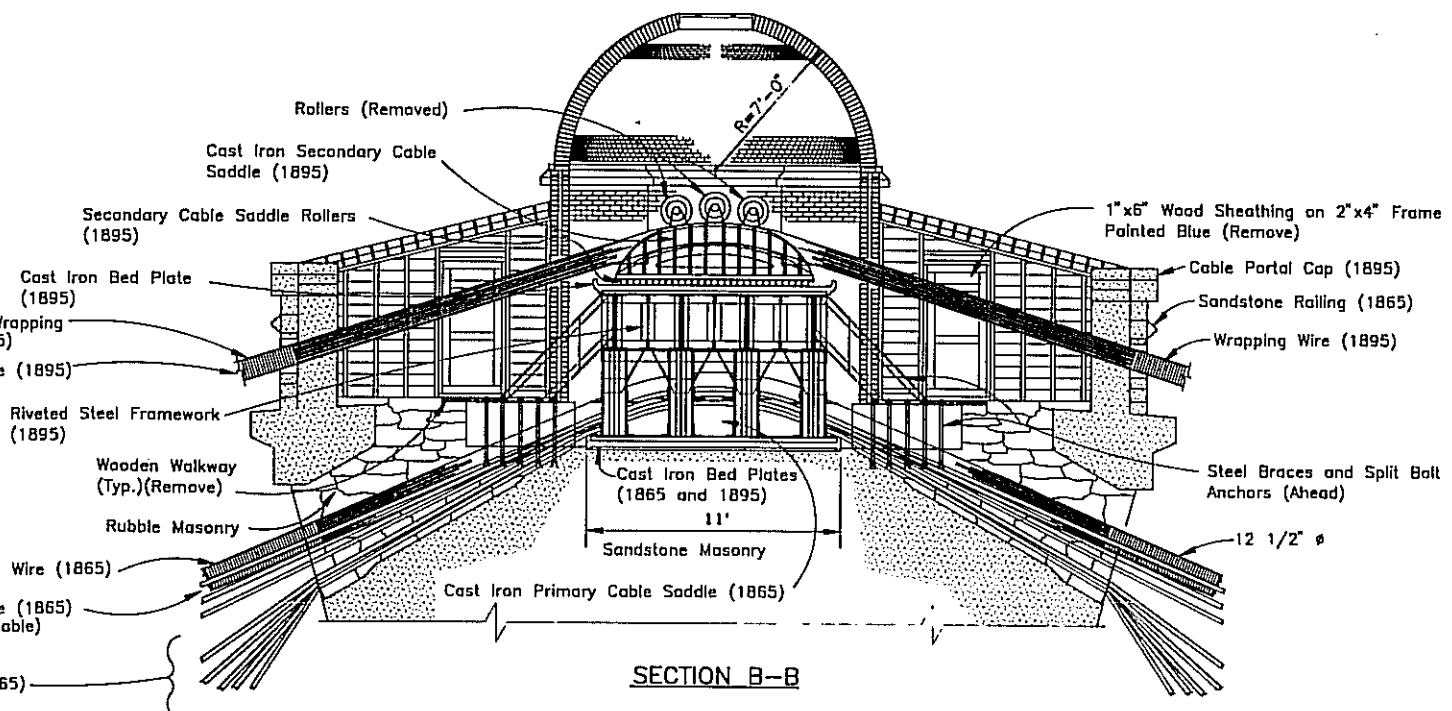
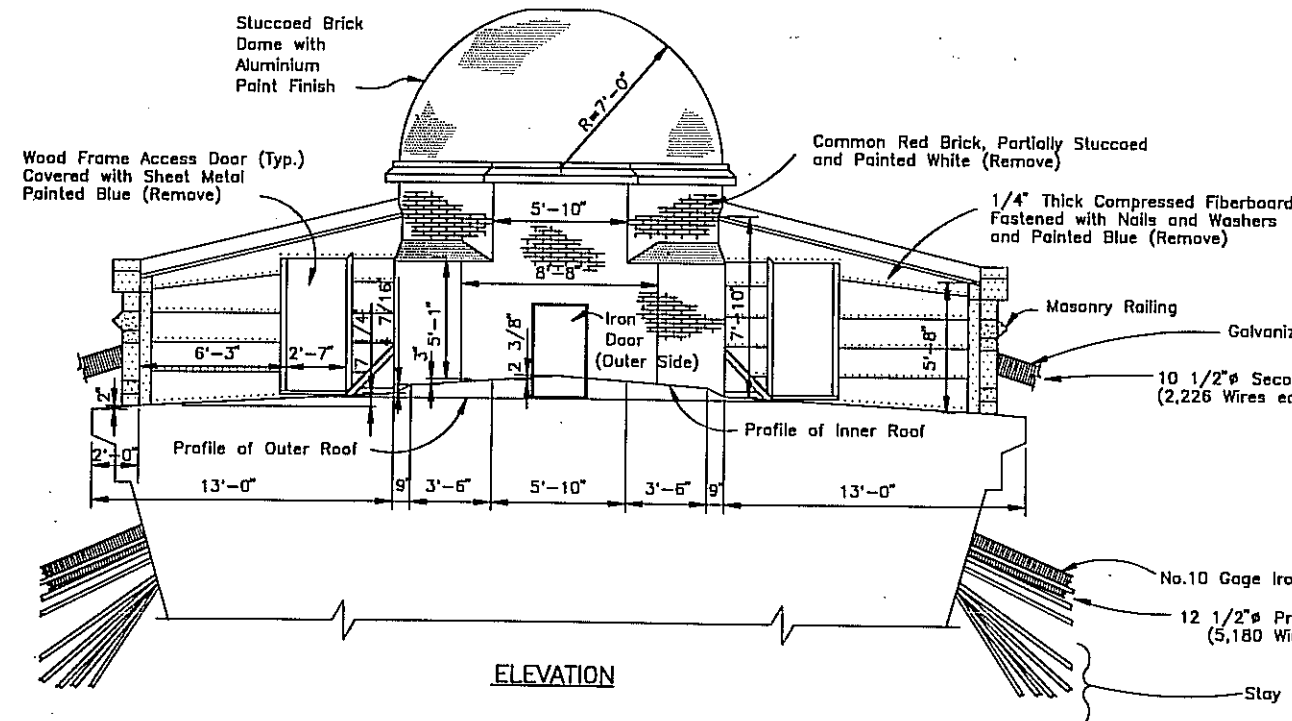


THIS IS APPROXIMATELY A HALF SIZE REDUCED PRINT



- NOTES:**
1. Items dated 1865 are documented as part of the original construction from the period 1856 to 1867. Items dated 1895 are documented as part of the reconstruction effort during the mid-1890's.
 2. Dimensions labelled in gothic style lettering are taken from the Engineering Record, Volume XXXVIII, No.15 entitled "The Covington and Cincinnati Suspension Bridge" by William Hildenbrand, Chief Engineer for the 1890's reconstruction. All other dimensions were obtained by field measurement during 1989.
 3. Work this sheet with sheets 15 -20.
 4. All items indicated for removal on this sheet shall be included in the unit price bid for "Remove Existing Tower Domes".



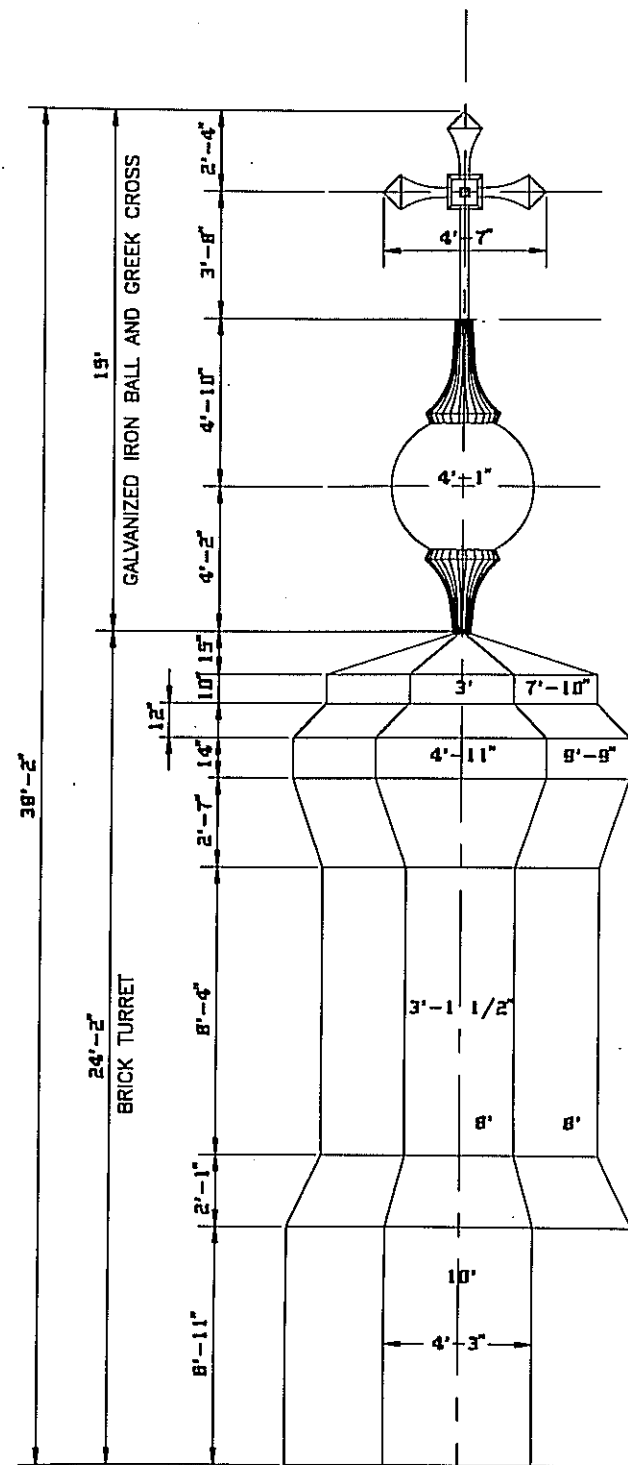
LEGEND

Stucco		Sandstone	
Mortar		Rubble	
Sandstone in Section			

CONTRACT III
JOHN A. ROEBLING BRIDGE
KY 17 OVER OHIO RIVER
SHEET 14

COMMONWEALTH OF KENTUCKY
DEPARTMENT OF HIGHWAYS
FRANKFORT
COUNTY OF
KENTON
COVINGTON-CINCINNATI
ROAD
STATION
P. E. PROJECT NO.
CONSTRUCTION PROJECT NO. MAINTENANCE PROJECT NO. DRAWING NO.
SSP 059-0017-024.009 22113

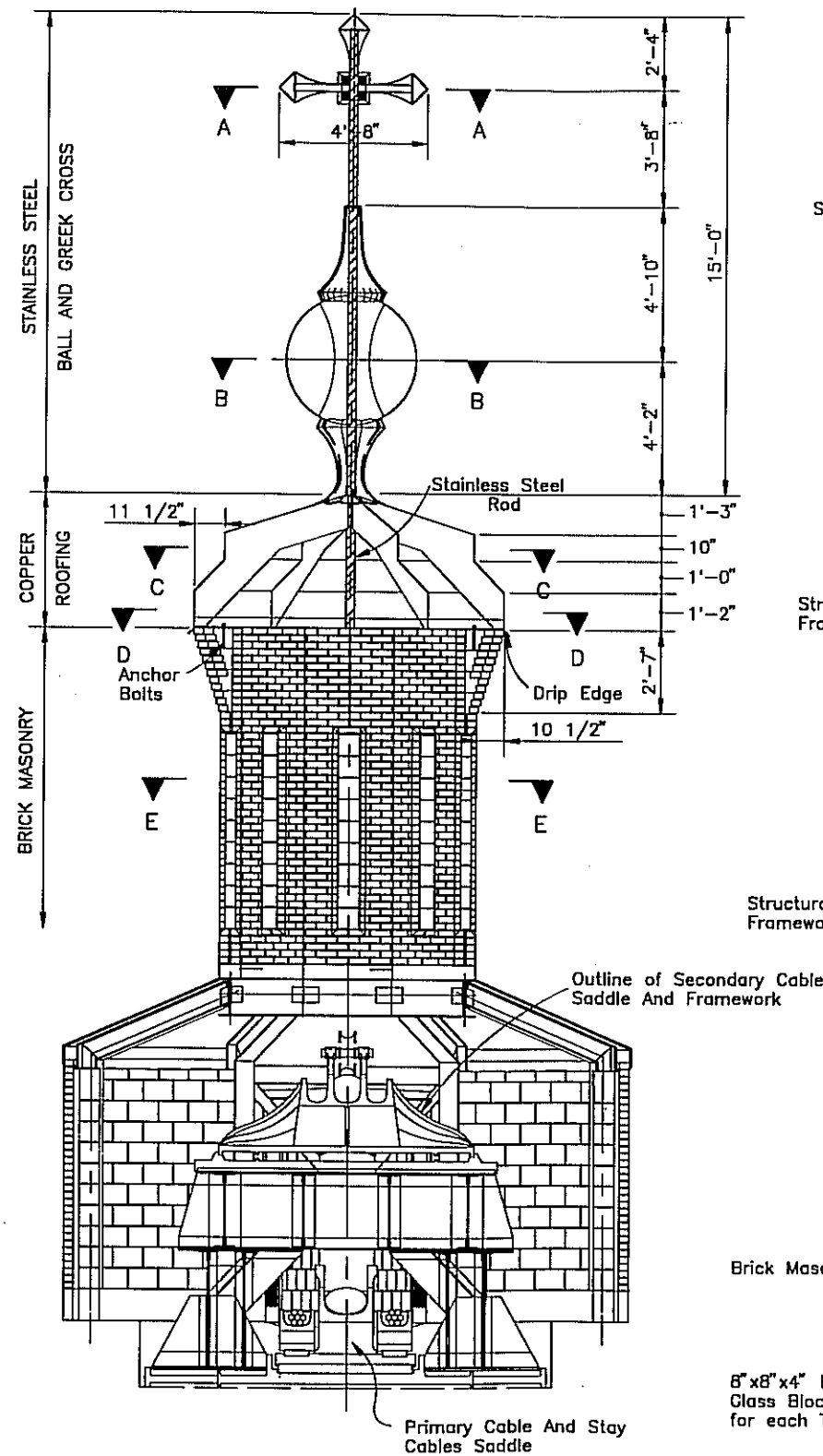
HISTORIC DOCUMENTATION
EXISTING TOWER DOMES



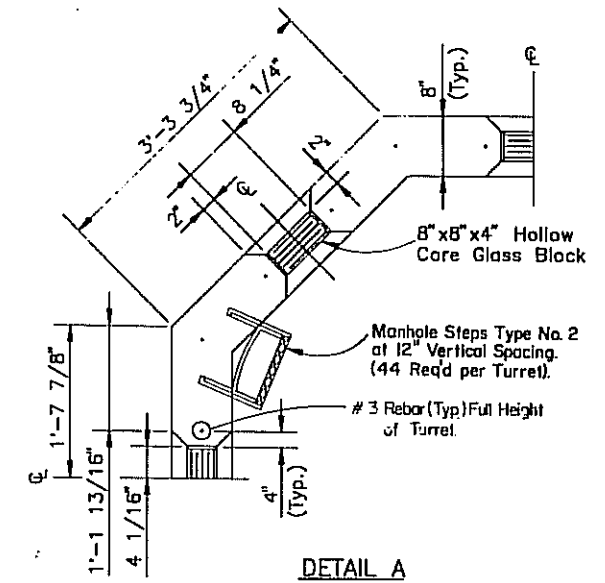
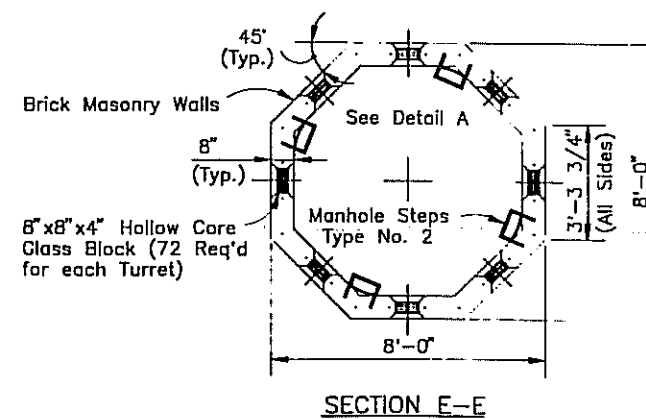
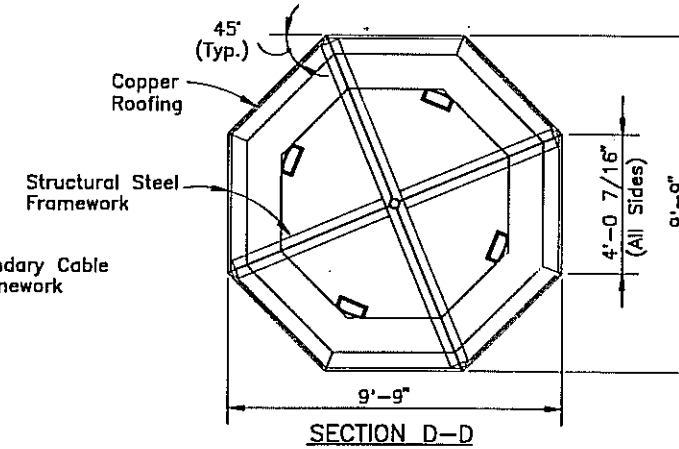
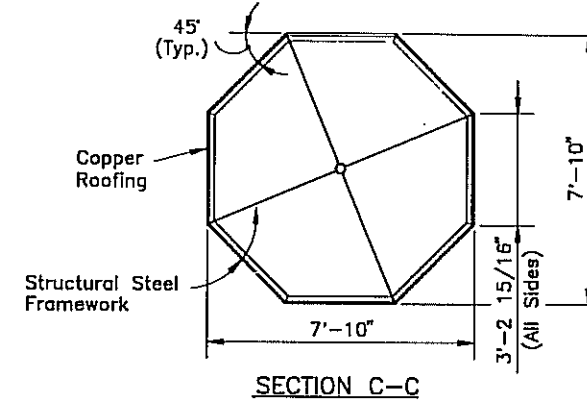
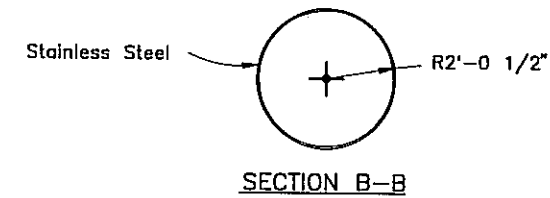
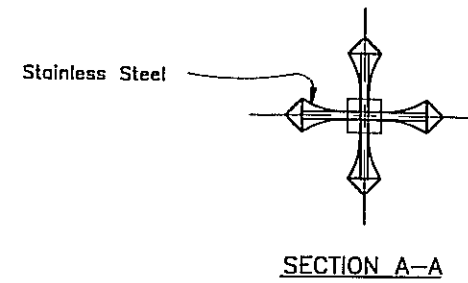
EXTERIOR VIEW
TOWER TURRET
 ROEBLING'S ORIGINAL DESIGN
 CIRCA 1850

FOR INFORMATION ONLY

NOTE: The dimensions shown in Gothic Style are taken from a turret sketch obtained from the files of the Roebling Library at Renselaer Polytechnic Institute at Troy, New York.



SECTION THROUGH © OF NEW TURRET



RESTORATION OF ORIGINAL TURRETS

CONTRACT III
 KY 17 OVER OHIO RIVER SHEET 15

COMMONWEALTH OF KENTUCKY
 DEPARTMENT OF HIGHWAYS
 FRANKFORT
 COUNTY OF
KENTON
 COVINGTON-CINCINNATI

ROAD
 P. E. PROJECT NO.
 STATION
 CONSTRUCTION PROJECT NO. MAINTENANCE PROJECT NO. DRAWING NO.
 SCP 059-0017-024.009 22113