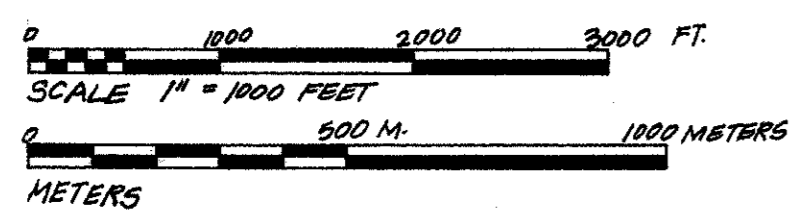
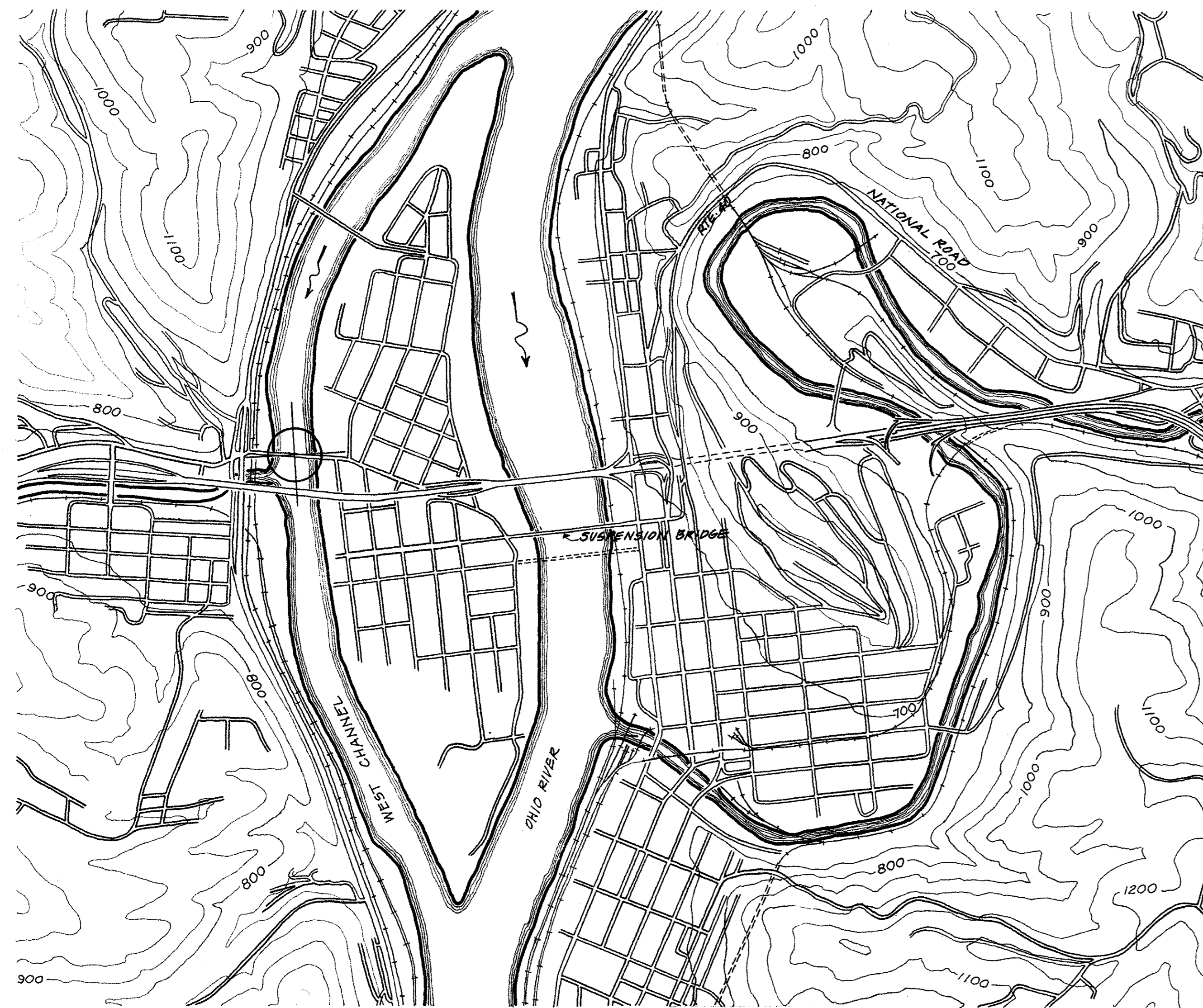
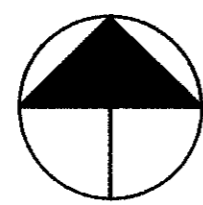
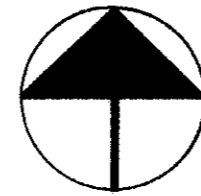


SITE PLAN



LOCATION PLAN



ADAPTED FROM U.S.G.S. WHEELING, W.VA.-OHIO QUAD, 1968

UTM REFERENCE: 17.522310.4435610

# BRIDGEPORT BRIDGE

## WHEELING, WEST VIRGINIA

THE WHEELING AND BELMONT BRIDGE COMPANY WAS CHARTERED IN 1816 BY THE STATE OF VIRGINIA IN ANTICIPATION OF THE CONSTRUCTION OF THE NATIONAL ROAD (APPROXIMATELY ROUTE 40 TODAY) THROUGH WHEELING IN 1820. THE COMPANY HOPED TO BRIDGE THE OHIO RIVER BEFORE THE ROAD WAS COMPLETED, BUT IT WAS NOT UNTIL 1837 THAT A COVERED BRIDGE WAS CONSTRUCTED OVER THE WESTERN CHANNEL BETWEEN WHEELING ISLAND AND THE OHIO SHORE, WHERE THE CITY OF BRIDGEPORT, OHIO, NOW LIES. THE WHEELING SUSPENSION BRIDGE OVER THE EASTERN CHANNEL WAS NOT COMPLETED UNTIL 1850.

THE COVERED BRIDGE WAS REPLACED IN 1893 BY THE PRESENT STRUCTURE, BUILT ORIGINALLY TO CARRY BOTH HIGHWAY AND ELECTRIC-RAILWAY TRAFFIC. THE CONSTRUCTION OF THE BRIDGEPORT BRIDGE WAS OVERSEEN BY ENGINEER WILHELM HILDENBRAND, WHO IS BEST KNOWN FOR HIS WORK ON THE BROOKLYN BRIDGE UNDER JOHN ROEBLING AND FOR HIS RECONSTRUCTION OF THE COVINGTON AND CINCINNATI BRIDGE. THE BRIDGEPORT BRIDGE WAS BUILT FOR THE WHEELING AND BELMONT BRIDGE COMPANY BY THE WROUGHT IRON BRIDGE COMPANY OF CANTON, OHIO, WHICH SOLD BRIDGES OF STANDARD DESIGN THROUGH CATALOGUES. THE BRIDGE WAS PURCHASED BY THE CITY OF WHEELING FROM THE WHEELING AND BELMONT BRIDGE COMPANY IN 1941. SINCE 1942, IT HAS BEEN OWNED BY THE STATE, AND MAINTAINED BY THE STATE ROAD COMMISSION OF WEST VIRGINIA. UNTIL IT WAS SOLD TO THE CITY, TOLLS WERE COLLECTED FOR THE USE OF THE BRIDGE.

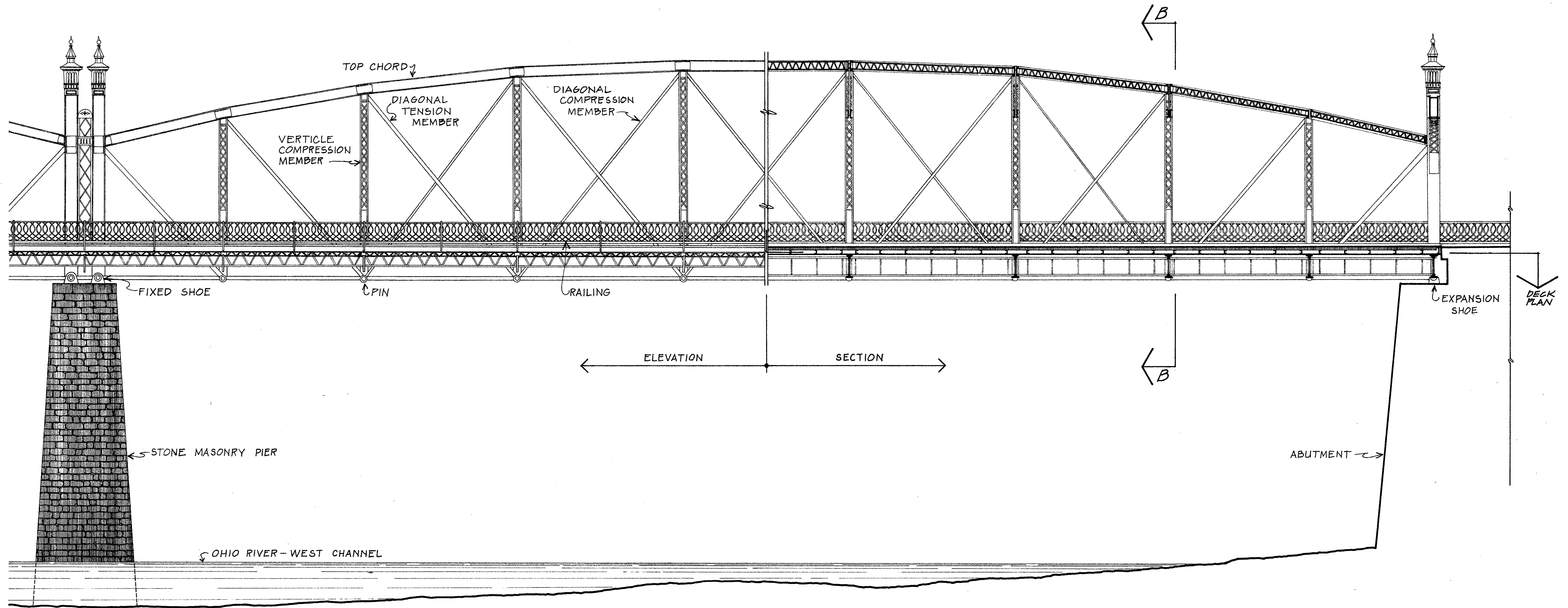
THE THROUGH TRUSS BRIDGE CONSISTS OF THREE MODIFIED BOWSTRING STEEL TRUSS SPANS, SUPPORTED ON TWO ABUTMENTS AND TWO PIERS OF STONE MASONRY. EXCEPT FOR THE REPLACEMENT, IN 1950, OF THE PARTIALLY TIMBER ROADWAY BY ONE OF STEEL GRATING, THE STRUCTURE HAS REMAINED VIRTUALLY UNCHANGED SINCE 1893.

THE BRIDGEPORT BRIDGE STANDS AS A REMINDER OF THE "STATE OF THE ART" OF ONE SORT OF BRIDGE BUILDING AT THE END OF THE CENTURY. ITS DESIGN IS REPRESENTATIVE OF HUNDREDS OF RAILROAD AND HIGHWAY BRIDGES SCATTERED THROUGHOUT THE COUNTRY. STEEL WAS WELL ON ITS WAY TO COMPLETELY REPLACING WROUGHT IRON AS THE PRIMARY STRUCTURAL MATERIAL, AND SPECIALIZATION CHARACTERIZED THE COMPANIES AND THE ENGINEERS WHO CONSTRUCTED AND DESIGNED BRIDGES.

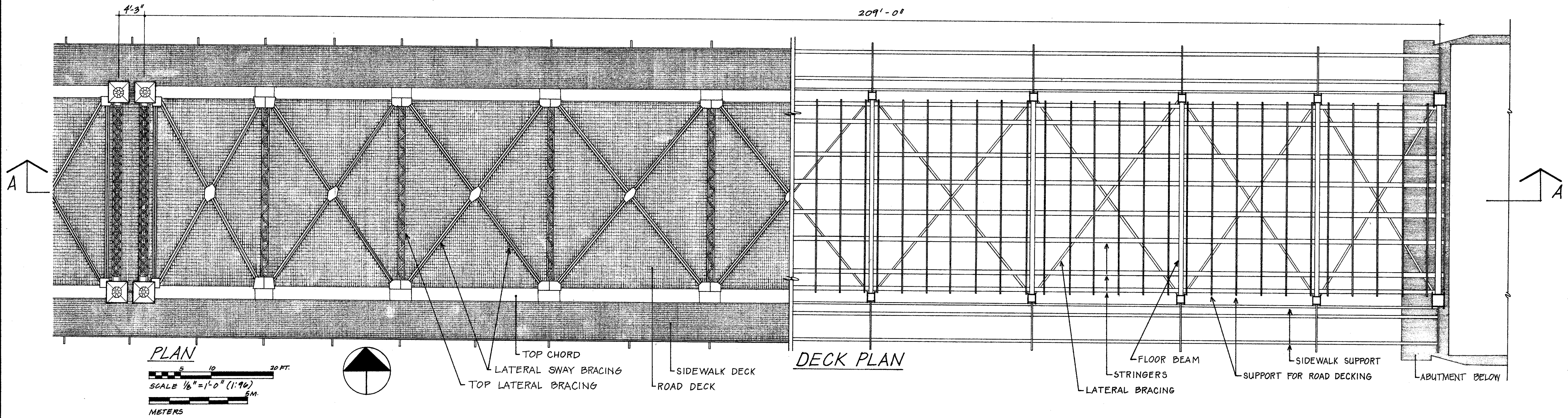
THIS SURVEY, CONDUCTED BY THE HISTORIC AMERICAN ENGINEERING RECORD (HAER), IS PART OF A LONG-RANGE PROGRAM TO COMPLETE INVENTORIES OF THE 50 STATES, AND INCLUDES A GROUP OF HISTORICALLY SIGNIFICANT ENGINEERING STRUCTURES IN THE STATE OF WEST VIRGINIA. THE SURVEY WAS SPONSORED BY THE NATIONAL PARK SERVICE (HAER); THE WEST VIRGINIA DEPARTMENT OF NATURAL RESOURCES; AND THE DEPARTMENT OF CIVIL ENGINEERING, WEST VIRGINIA UNIVERSITY.

THE FIELD WORK, WRITTEN DATA, MEASURED DRAWINGS, HISTORICAL INVENTORY, AND PHOTOGRAPHS PRODUCED DURING THE SUMMER OF 1974 WERE PREPARED UNDER THE GENERAL DIRECTION OF DOUGLAS L. GRIFFIN, CHIEF, HAER, AND DONALD E. SACKHEIM, HISTORIAN, HAER, WITH KATHLEEN HOEFT (COLUMBIA UNIVERSITY) AS PROJECT SUPERVISOR, AND DR. EMORY KEMP (DEPARTMENT OF CIVIL ENGINEERING, WEST VIRGINIA UNIVERSITY) AS PROJECT ADVISOR. THE SURVEY TEAM CONSISTED OF DAVID VAN TASSEL, HISTORIAN (GEORGE WASHINGTON UNIVERSITY); LU ANN SIMS, STUDENT HISTORIAN (GEORGIA TECHNICAL INSTITUTE); STEPHEN HAWKS, ARCHITECT (KANSAS STATE UNIVERSITY); MARTIN GREENBERG, ARCHITECT (PRATT INSTITUTE); AND ROBERT MEDEN, ARCHITECT (KENT STATE UNIVERSITY). THE FORMAL PHOTOGRAPHY WAS BY WILLIAM EDMUND BARRETT.

DRAWN BY: ROBERT MEDEN, ARCHITECT, KATHLEEN HOEFT, 1974  
 CHECKED BY: DOUGLAS L. GRIFFIN, CHIEF, HAER, AND DONALD E. SACKHEIM, HISTORIAN, HAER  
 STATE OF WEST VIRGINIA SURVEY  
 UNITED STATES DEPARTMENT OF THE INTERIOR  
 NAME AND LOCATION OF STRUCTURE: BRIDGEPORT BRIDGE (1924) WEST VIRGINIA, OHIO COUNTY  
 RECORD NO.: HAER WV-25  
 HISTORIC AMERICAN ENGINEERING RECORD SHEET 1 OF 3 SHEETS  
 WHEELING



PARTIAL SOUTH ELEVATION / LONGITUDINAL SECTION A (EAST SPAN)



UNIVERSITY OF VIRGINIA  
 HISTORIC AMERICAN  
 ENGINEERING RECORD  
 SHEET 2 OF 3 SHEETS

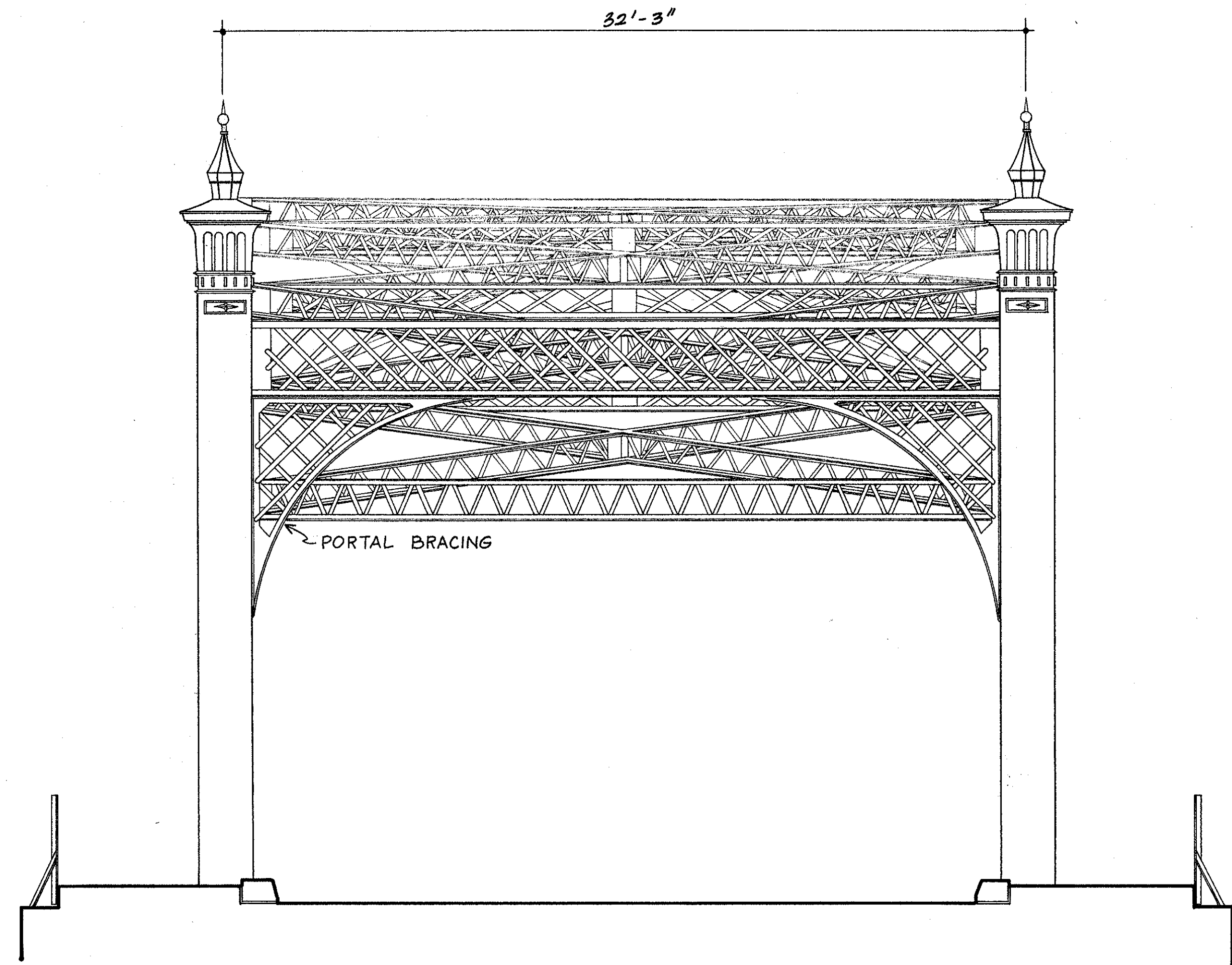
RECORD NO.  
 HAER  
 WV-25

WEST VIRGINIA

NAME AND LOCATION OF STRUCTURE  
 BRIDGEPORT BRIDGE (1924)  
 OHIO COUNTY

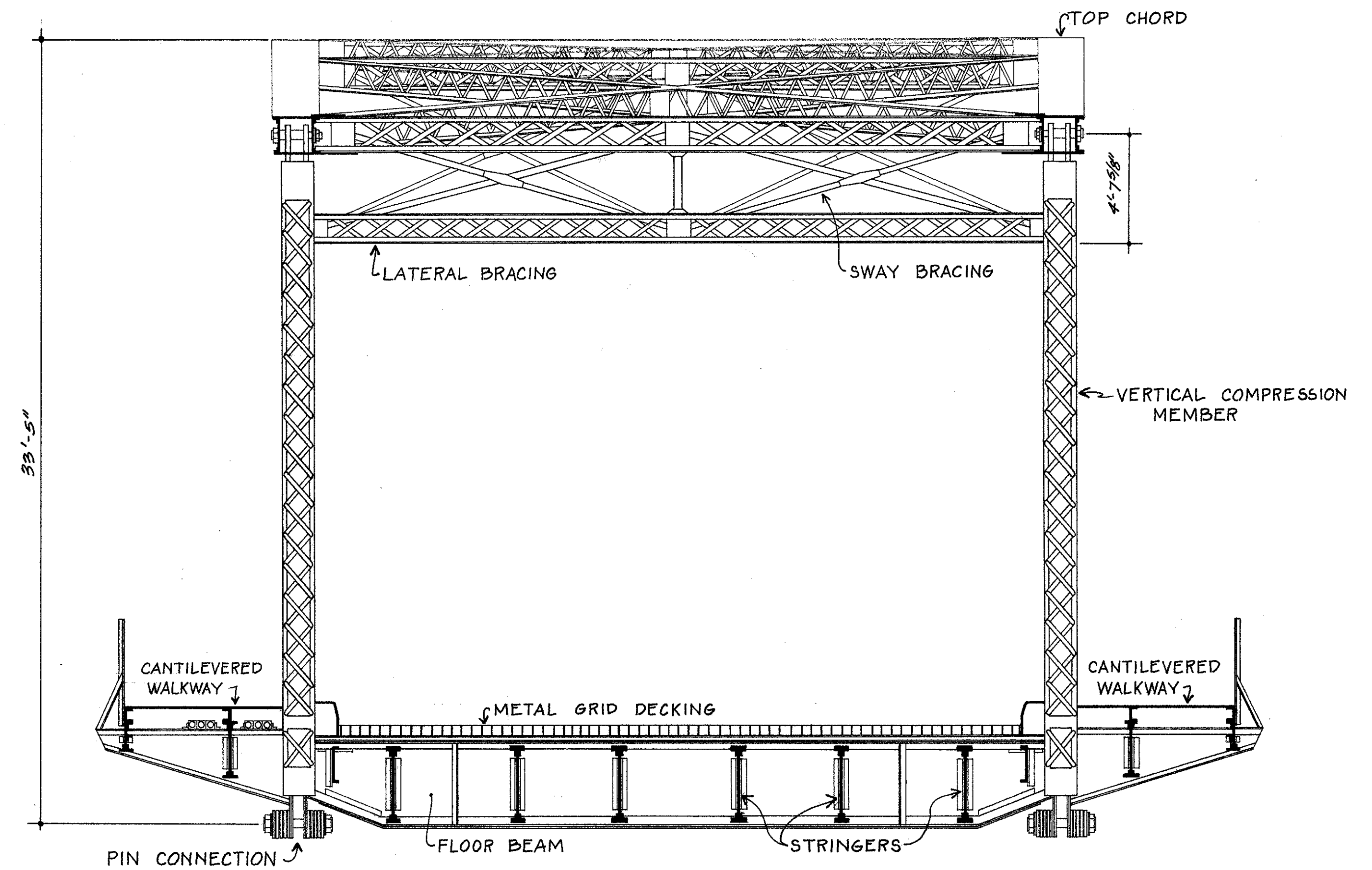
WHEELING

DRAWN BY: ROBERT MEYER 1774  
 OFFICE OF ARCHAEOLOGY AND HISTORIC PRESERVATION  
 STATE OF WEST VIRGINIA SURVEY  
 UNDER DIRECTION OF THE NATIONAL PARK SERVICE,  
 UNITED STATES DEPARTMENT OF THE INTERIOR



EAST ELEVATION

SCALE 1/4" = 1'-0" (1:48)
   
 METERS



TRANSVERSE SECTION B

DRAWN BY: **ROBERT MEDEN, STEPHEN HAWKS** 1774  
 OFFICE OF ARCHAEOLOGY AND HISTORIC PRESERVATION  
 STATE OF WEST VIRGINIA SURVEY  
 UNITED STATES DEPARTMENT OF THE INTERIOR  
 WHEELING

NAME AND LOCATION OF STRUCTURE  
**BRIDGEPORT BRIDGE (1924)**  
 OHIO COUNTY  
 WEST VIRGINIA

RECORD NO.  
**HAER WV-25**

HISTORIC AMERICAN  
 ENGINEERING RECORD  
 SHEET **3** OF **3** SHEETS