

OREGON INVENTORY OF HISTORIC PROPERTIES

**HISTORIC RESOURCE SURVEY FORM**

Note: For properties 35 years old and newer, starred (\*) sections are the only required fields.

\*County: Lane

\*Street Address: **MAIN STREET BRIDGE** \*City: Springfield

USGS Quad Name: Eugene East GPS Latitude N44 02 765 Longitude W123 01 547

Township: 17S Range: 3W Section: 35 Block/Lot: N/A Tax Lot #: N/A

\*Date of Construction: c. 1929 Historic Name: Historic Use or Function: Bridge

Grouping or Cluster Name: N/A \*Current Name or Use: Main Street Bridge Associated Archaeological Site: Unknown

Architectural Classification(s) Plan Type/Shape Number of Stories

Foundation Material Concrete Structural Framing Reinforced Concrete Moved?

Roof Type/Material N/A Window Type/Material: N/A

Exterior Surface Materials Primary: Secondary: Decorative:

Exterior Alterations or Additions/Approximate none

Number and Type of Associated Resources:

Integrity: Good Condition: Good Local Ranking: National Register Listed: No

**Preliminary National Register Findings:** Potentially Eligible:  Individually or  As a contributing resource in a district  
 Not Eligible:  Intact but lacks distinctio  
 Altered (choose one):  Reversible/Potentially eligible individually or in district  
 Reversible/Ineligible-lacks distinction  
 Irretrievable loss of integrity  
 Not 50 yrs old

Description of Physical and/or Landscape Features:  
 The Main Street bridge is a very slightly arched span crossing the Willamette. A single metal truss arch rises over the bridge deck. The bridge is relieved by decorative concrete work in the railing.

Statement of Significance [Required ONLY for Intensive Level Surveys](use additional sheets if necessary)

\*Researcher/Organization: SFW/Heald & Wright \*Date Recorded: 1/30/01

Survey Form Page 1 \*Photo Roll#: 8 \*Frame #(s): 1 Local Designation # SHPO #:

**HISTORIC RESOURCE SURVEY FORM**

\*County

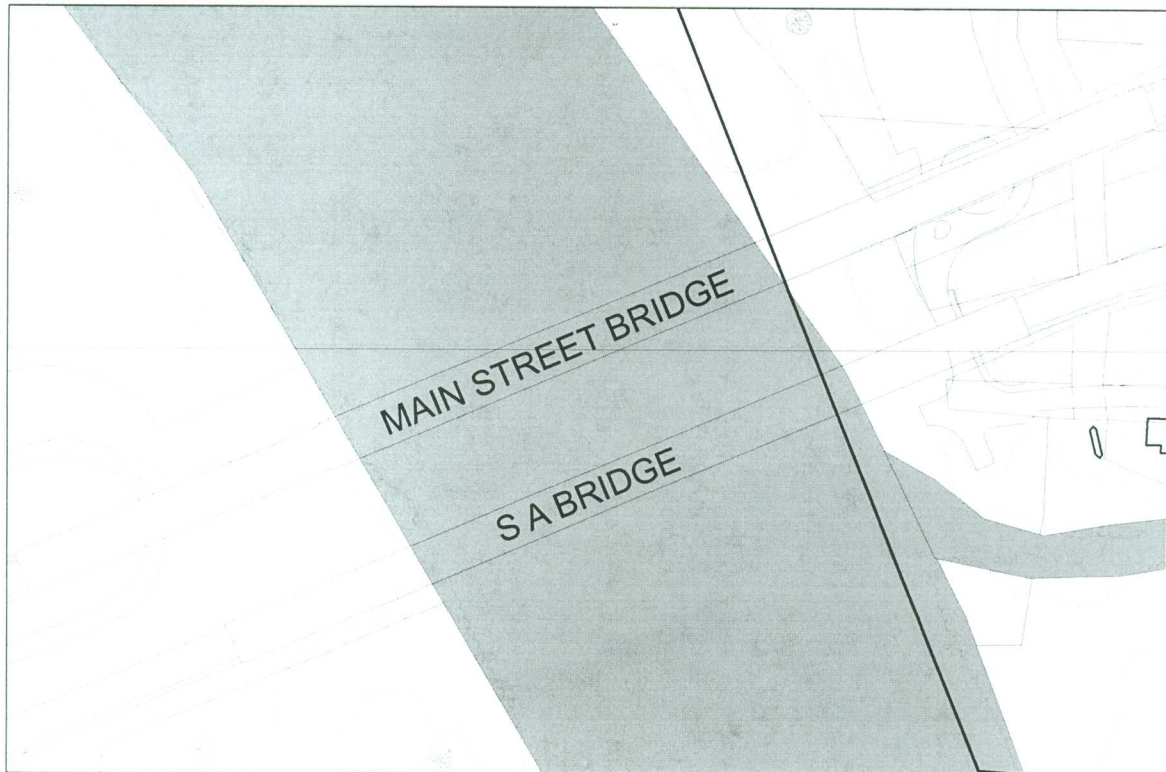
\*Street Address: **MAIN STREET BRIDGE**

\*City: Springfield

Photo:



Map:



\*Researcher/Organization SFW/Heald & Wright

\*Date Recorded: 1/30/01

**Survey Form Page 2**

\*Photo Roll# 8

\*Frame #(s): 1

Local Designation #

SHPO #:

SHPO-OR

# E.O. 11593

## DETERMINATION OF ELIGIBILITY NOTIFICATION National Register of Historic Places National Park Service

Name of property: Historic Highway Bridges of Oregon Thematic Resources

Location: various Counties

State: OR

Request submitted by: DOT/FHWA Dale E. Wilken

Date received: 4-15-85

Additional information received:

### Opinion of the State Historic Preservation Officer:

Eligible

Not Eligible

No Response

Comments:

### The Secretary of the Interior has determined that this property is:

Eligible

Applicable criteria:

Not Eligible

Comments:

36 CFR Part 63.3  
Determination

"see attached list for bridges determined eligible"

Documentation insufficient

(Please see accompanying sheet explaining additional materials required)

Sr Beth L. Sauer  
Keeper of the National Register

Determined Eligible

Date: 5-2-85

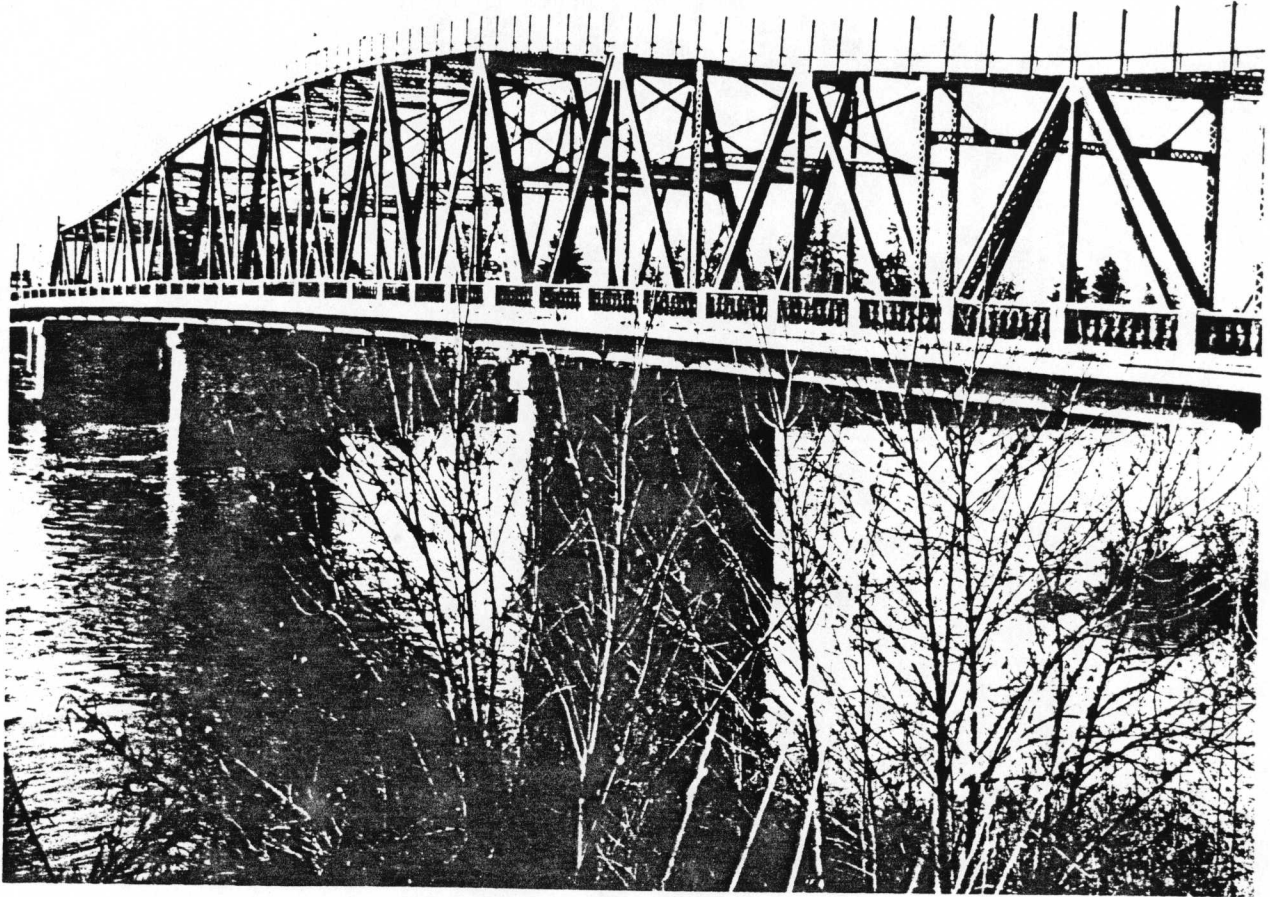
Historic Bridges of Oregon Thematic Resources  
 List of Bridges Determined Eligible under 36 CFR 63.3

<u>Bridge Name and (Location)</u>	<u>County</u>
Bull Run River Bridge, (Bull Run)	Clackamas
Sandy River (Lusted Road) Bridge, (Sandy vic.)	Clackamas
Balch Gulch Bridge, (Portland)	Multnomah
Owyhee River Bridge, (Rome vic.)	Malheur
Rhea Creek (Spring Hollow) Bridge, (Ruggs vic.)	Morrow
Willow Creek Bridge, (Cecil)	Morrow
Burlington Northern Overcrossing (North Fessenden Street (Portland)	Multnomah
Burlington Northern Overcrossing (North Willamette Blvd.) (Portland)	Multnomah
Umatilla River (SE 8th Street) Bridge, (Pendleton)	Umatilla
Grande Ronde River Bridge, (Troy)	Wallowa
Pine Creek Bridge, (Umapine vic.)	Umatilla
Cow Creek Bridge, (Danner vic.)	Malheur
Siuslaw River Bridge, (Richardson)	Lane
Lower Milton Creek (McDonald) Bridge, (St. Helens)	Columbia
Grande Ronde (Old Rhinehart) Bridge, (Elgin vic.)	Union
Willamette River Bridge, (North Albany)	Benton
Columbia River (Bridge of the Gods), (Cascade Locks)	Hood River
Willamette River (Ross Island) Bridge, (Portland)	Multnomah
Santiam River (Cascadia Park) Bridge, (Cascadia)	Linn
Willamette River Bridge, (Springfield)	Lane
Myrtle Creek (Neal La.) Covered Br., (Myrtle Ck vic.)	Douglas
Calapooya River (Rochester) Covered Bridge, (Sutherlin vic.)	Douglas
Mill Creek (Front Street) Bridge, (Salem)	Marion
Tumalo Irrigation Ditch Bridge, (Tumalo vic.)	Deschutes
Killam Creek Bridge, (Tillamook vic.)	Tillamook
Stark Street Viaduct, (Gresham vic.)	Multnomah
Williams Creek Bridge, (Provolt vic.)	Josephine
Rogue River (Rock Point) Bridge, (Gold Hill vic.)	Jackson
Willamette River Bridge, (Oregon City)	Clackamas
Alexandra Avenue Viaduct, (Portland)	Multnomah
South Umpqua River Bridge, (Myrtle Creek)	Douglas
North Umpqua River Bridge, (Winchester)	Douglas
Necanicum River Bridge, (Seaside)	Clatsop
Fifteenmile Creek (Adkisson) Bridge, (Boyd)	Wasco
Crooked River (High) Bridge, (Terrebonne vic.)	Jefferson
Rogue River Bridge, (Gold Hill)	Jackson
Rocky Creek (Ben Jones) Bridge, (Otter Crest vic.)	Lincoln
South Fork, Hood River Bridge, (Mount Hood vic.)	Hood River

Rogue River Bridge, (Gold Beach)	Curry
Cape Creek Bridge, (Florence vic.)	Lane
Rogue River (Caveman) Bridge, (Grants Pass)	Josephine
Wilson River Bridge, (Tillamook vic.)	Tillamook
Santiam River Bridge, (Jefferson)	Marion
Clackamas River (McLoughlin) Bridge, (Gladstone)	Clackamas
Willamette River (Hawthorne) Bridge, (Portland)	Multnomah
Willamette River (Broadway) Bridge, (Portland)	Multnomah
Coquille River Bridge, (Coquille)	Coos
Willamette River (Burnside) Bridge, (Portland)	Multnomah
Willamette River (St. John's) Bridge, (Portland)	Multnomah
Beaver Creek Bridge, (Troutdale)	Multnomah
Steinman Overcrossing, (Steinman)	Multnomah
Dollarhide Overcrossing, (Steinman vic.)	Jackson
Old Mill Race Bridge, (Pendleton)	Jackson
Fifteenmile Creek (Seufert) Viaduct, (The Dallas vic)	Umatilla
Mill Creek (6th Street) Bridge, (The Dalles)	Wasco
Pringle Creek (Liberty Street) Bridge, (Salem)	Wasco
Pringle Creek/Shelton Ditch (Church Street) Bridge, (Salem)	Marion
	Marion

Two bridges included in the thematic group were determined eligible on an earlier date:

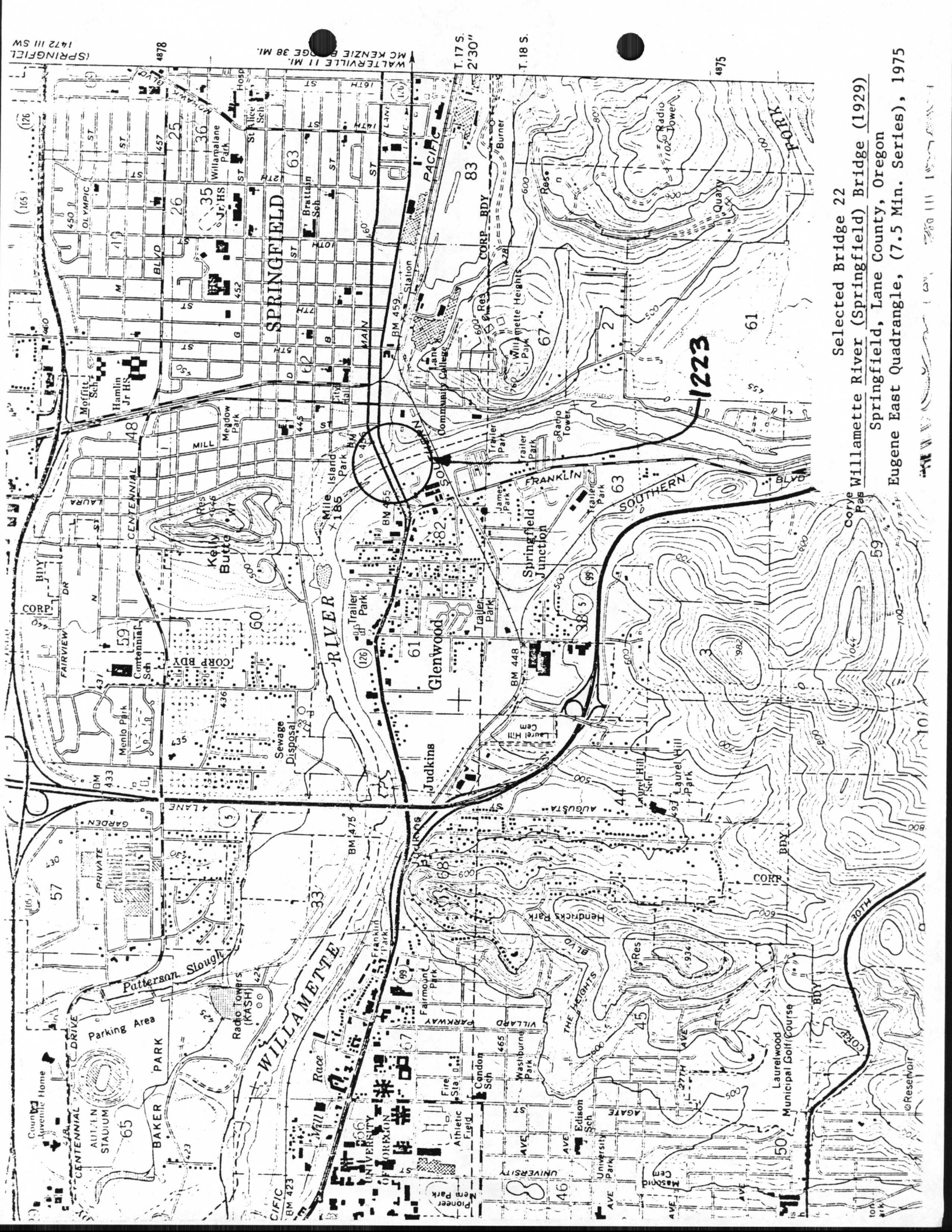
Pass Creek Covered Bridge, (Drain) (Determined eligible on 2/28/85)	Douglas
Umatilla River (S.W. 10th Street) Bridge, (Pendleton) (Determined eligible on 4/3/85)	Umatilla



Willamette River (Springfield) Bridge  
Structure Number 1223  
McKenzie Highway 15, M.P. 1.33W  
Lane County, Springfield

Constructed - 1929  
Steel Through Truss (Warren  
with Polygonal Upper Chords)  
Ownership - State (OTC)

The Springfield Bridge is a 1090-foot structure, with a main span of a 550-foot steel continuous through truss. The bridge was designed by C.B. McCullough, whose hand is evidenced by the presence of ornate entrance pylons and decorative concrete railing. The Springfield Bridge is distinctive as one of very few truss bridges to receive such artistic treatment. In addition, it is the largest non-cantilever truss span in the state, and one of only three pre-1941 continuous truss designs.



(SPRINGFIELD 1472 III SW)

4978

WALTERVILLE 11 MI. MC KENZIE BRIDGE 38 MI.

T. 17 S. 2'30"

T. 18 S.

4975

Selected Bridge 22  
 Willamette River (Springfield) Bridge (1929)  
 Springfield, Lane County, Oregon  
 Eugene East Quadrangle, (7.5 Min. Series), 1975

1223

SPRINGFIELD

Glenwood

WILLAMETTE

Laurelwood Municipal Golf Course

AUT. IN STADIUM

Parking Area

Patterson Slough

Radio Towers (KASH)

WILLAMETTE

WILLAMETTE

WILLAMETTE

WILLAMETTE

WILLAMETTE

WILLAMETTE

WILLAMETTE

WILLAMETTE

WILLAMETTE

WILLAMETTE

WILLAMETTE

WILLAMETTE

WILLAMETTE

WILLAMETTE