

The Union Elevated Railroad

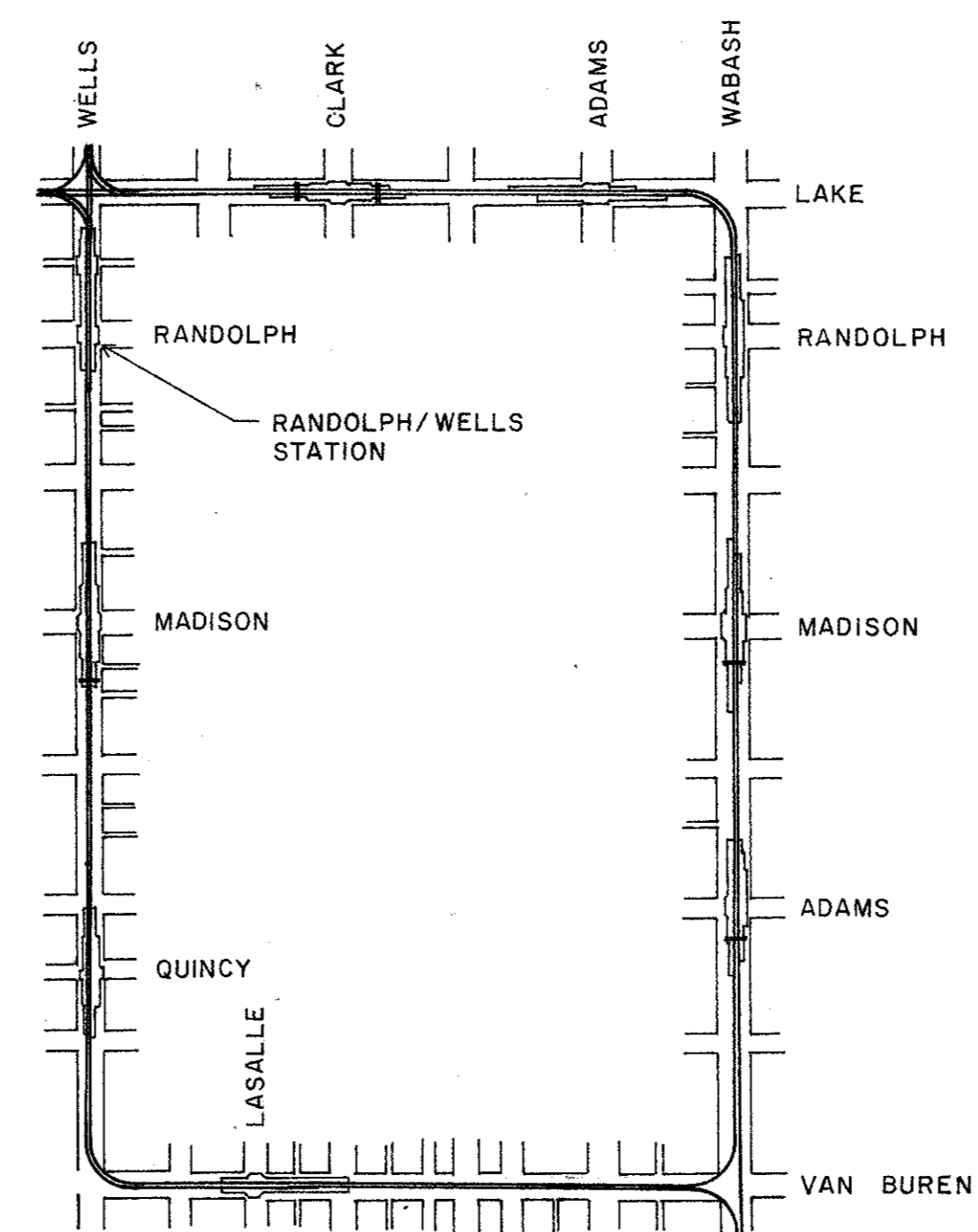
Randolph/Wells Station

THE RANDOLPH/WELLS STREET ELEVATED RAILROAD STATION WAS DESIGNED IN 1897 FOR THE UNION ELEVATED RAILROAD BY JOHN ALEXANDER LOW WADDELL, A CONSULTING ENGINEER FROM KANSAS CITY, MISSOURI. IT WAS ORIGINALLY KNOWN AS THE LAKE STREET STATION ON FIFTH AVENUE.

THE RANDOLPH/WELLS ELEVATED STATION IS ONE OF THE ORIGINAL STATIONS CONSTRUCTED ALONG THE UNION ELEVATED RAILROAD LINE. IT IS AN INTACT EXAMPLE OF A 19TH CENTURY URBAN TRANSPORTATION RAIL STATION. TWO EPISODES OF CONSTRUCTION ARE CLEARLY EVIDENT. THE ORIGINAL TICKET PAVILIONS WERE CONSTRUCTED IN 1897. IN 1913, THE STATION PLATFORM WAS EXTENDED AND A TRANSFER BRIDGE AND ADDITIONAL TICKET PAVILIONS WERE CONSTRUCTED.

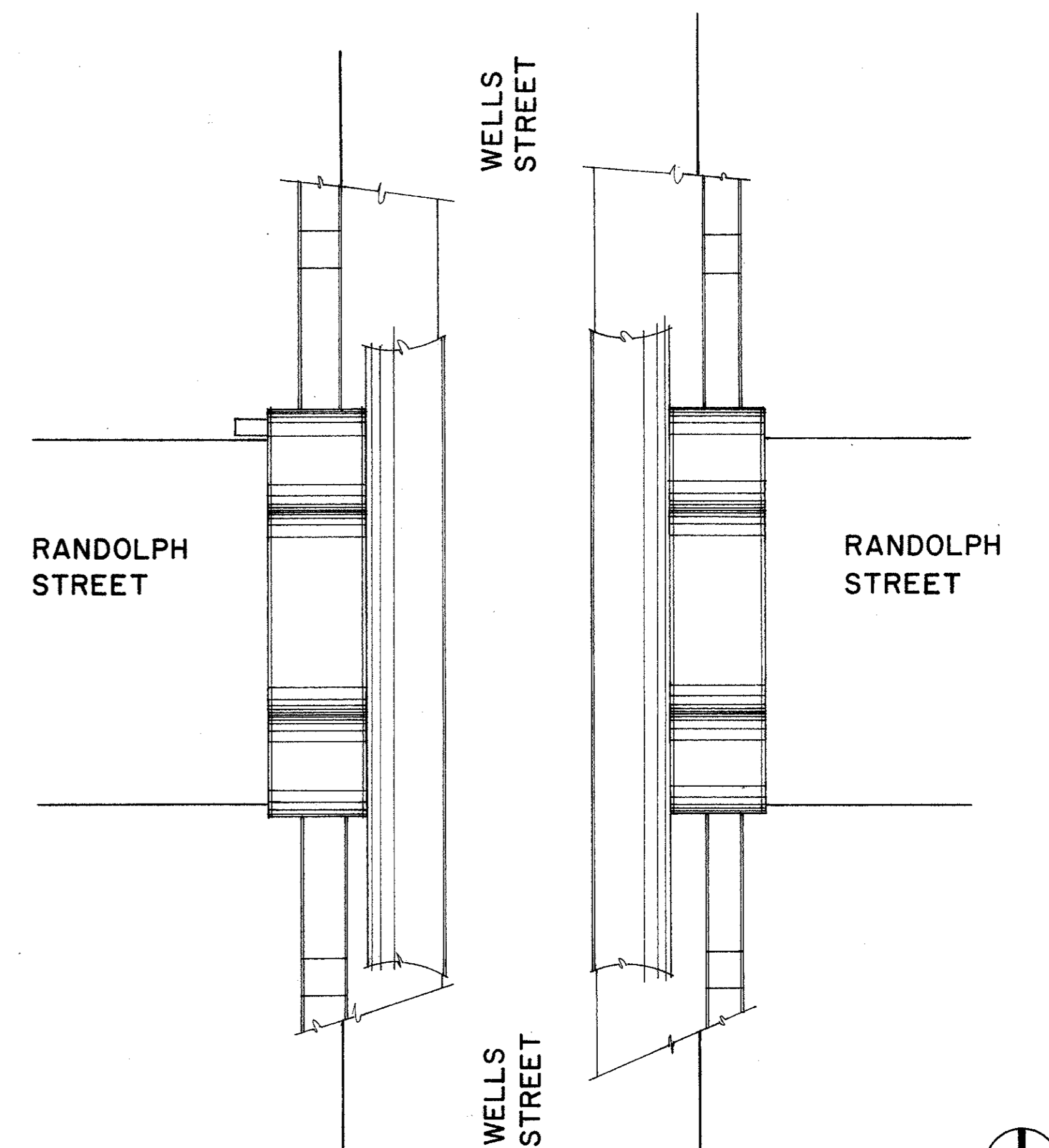
CONSTRUCTION OF THE UNION ELEVATED RAILROAD CAN BE CREDITED TO THE EFFORTS OF CHARLES T. YERKES, JR. WHO CAME TO CHICAGO IN 1882 AND SOON BEGAN TO ACQUIRE VARIOUS PASSENGER RAIL LINES HOPING TO ORGANIZE THEM INTO A UNIFIED SYSTEM. HE FORMED EIGHT DISTINCT CORPORATIONS WHICH EITHER BOUGHT OR CONSTRUCTED RAIL LINES IN VARIOUS PARTS OF THE CITY. THE UNION ELEVATED RAILROAD WAS INCORPORATED IN 1896 AS THE ENTITY THAT WOULD OPERATE THE RAIL LINE POPULARLY KNOWN AS THE "LOOP L."

THE PRESENT PROJECT WAS UNDERTAKEN BY THE CHICAGO TRANSIT AUTHORITY TO PARTIALLY FULFILL SECTION 106 COMPLIANCE REQUIREMENTS. THE CHICAGO TRANSIT AUTHORITY CONTRACTED WITH ARCHAEOLOGICAL RESEARCH INCORPORATED (ARI) FOR FORMAL HAER DOCUMENTATION UNDER PROJECT DIRECTOR DAVID KEENE AND PROJECT ASSOCIATE DR. JOHN N. VOGEL. MR. TOM YANUL ACTED AS PHOTOGRAPHER AND MS. JOAN POMERANC PROVIDED HISTORICAL RESEARCH SERVICE. DRAWINGS WERE PREPARED BY LOURDES MESA GONZALEZ, LESLEY GILMORE, DAVID SCHULZ, EDWARD MALNAR, JEANNINE CRANE, AND WILLIAM POSPISHIL, ALL STAFF MEMBERS AT HASBROUCK PETERSON ZIMOCH SIRIRATTUMRONG UNDER THE GENERAL DIRECTION OF W. R. HASBROUCK. ADDITIONAL FIELD MEASUREMENTS WERE PROVIDED BY CHICAGOLAND SURVEY COMPANY.



LOOP SYSTEM MAP

NOT TO SCALE



SITE PLAN

FEET 1" = 16'
METERS 1:200

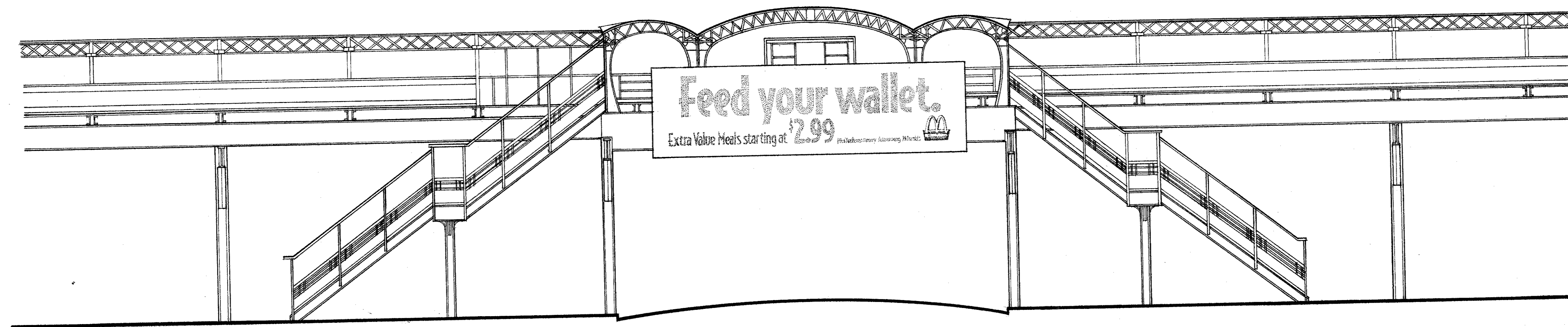
DELINEATED BY: BILL POSPISHIL, JEANNINE M. CRANE, 1994
ROCKY MOUNTAIN REGIONAL OFFICE/DENVER
NATIONAL PARK SERVICE
UNITED STATES DEPARTMENT OF THE INTERIOR

THE UNION ELEVATED RAILROAD, RANDOLPH/WELLS STATION
CHICAGO
COOK COUNTY
ILLINOIS

SHEET
1 of 4

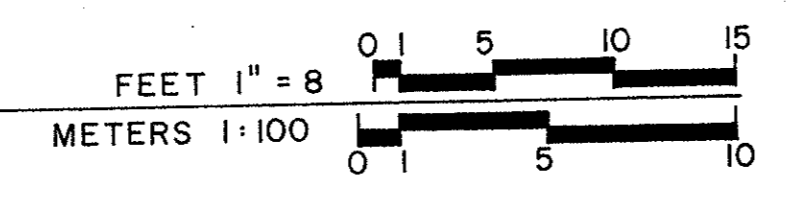
HISTORIC AMERICAN
ENGINEERING RECORD
IL - 1 - F

IF REPRODUCED, PLEASE CREDIT: HISTORIC AMERICAN ENGINEERING RECORD, NATIONAL PARK SERVICE, NAME OF DELINEATOR, DATE OF THE DRAWING

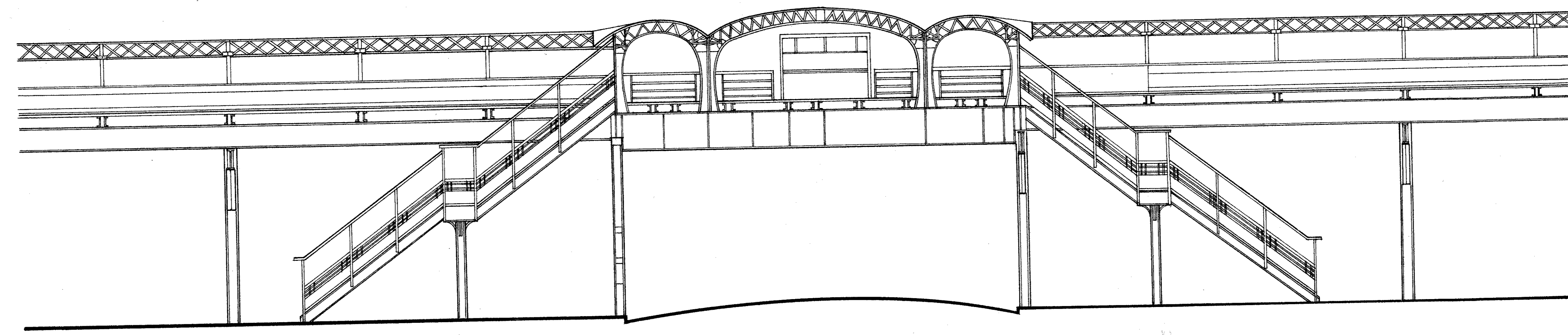


T/ROOF
 T/SHED ROOF
 T/RAIL 1'-8"^(±)
 T/PLATFORM 3'-5"^(±) 5'-8"^(±)
 T/B/EAM 1'-5"^(±)
 B/B/EAM 4'-9"^(±)
 37'-7"^(±)
 20'-8"
 GRADE

**PARTIAL EAST ELEVATION
 RANDOLPH STREET**

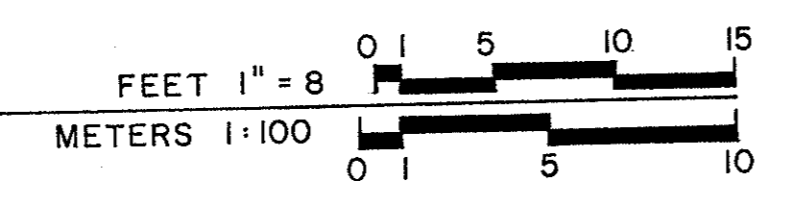


NOTE: AREA BEHIND BILLBOARD INACCESSIBLE



T/ROOF
 T/SHED ROOF
 T/RAIL 1'-8"^(±)
 T/PLATFORM 3'-5"^(±) 5'-10"^(±)
 T/B/EAM 1'-4"^(±)
 B/B/EAM 2'-1"^(±)
 37'-7"^(±)
 22'-5"
 GRADE

**PARTIAL WEST ELEVATION
 RANDOLPH STREET**



DELINEATED BY: LOURDES M. GONZALEZ, JEANNINE M. CRANE, BILL POSPISHL, 1994

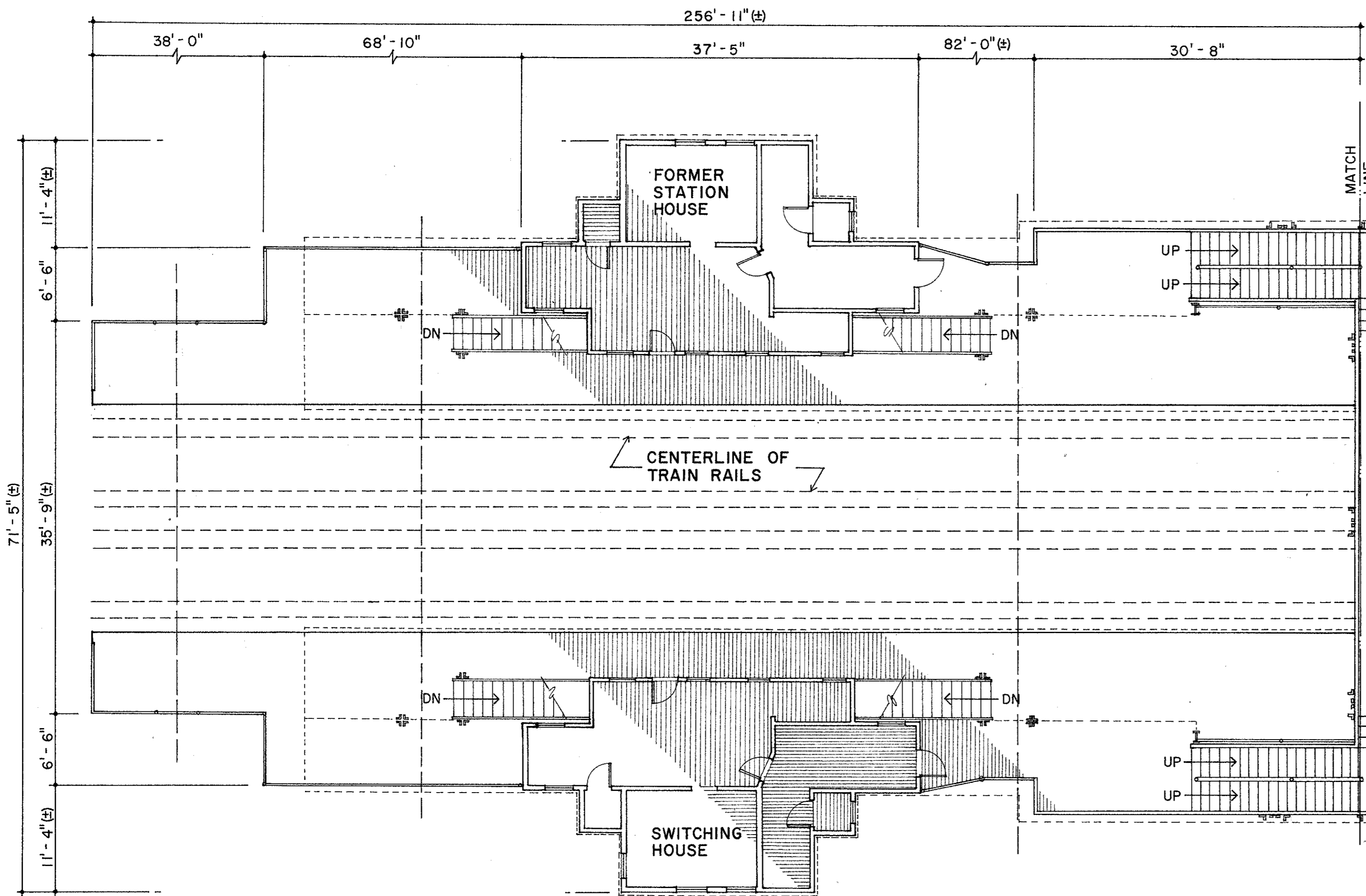
ROCKY MOUNTAIN REGIONAL OFFICE/DENVER
 NATIONAL PARK SERVICE
 UNITED STATES DEPARTMENT OF THE INTERIOR

THE UNION ELEVATED RAILROAD, RANDOLPH/WELLS STATION
 RANDOLPH/WELLS STREETS
 CHICAGO
 COOK COUNTY
 ILLINOIS

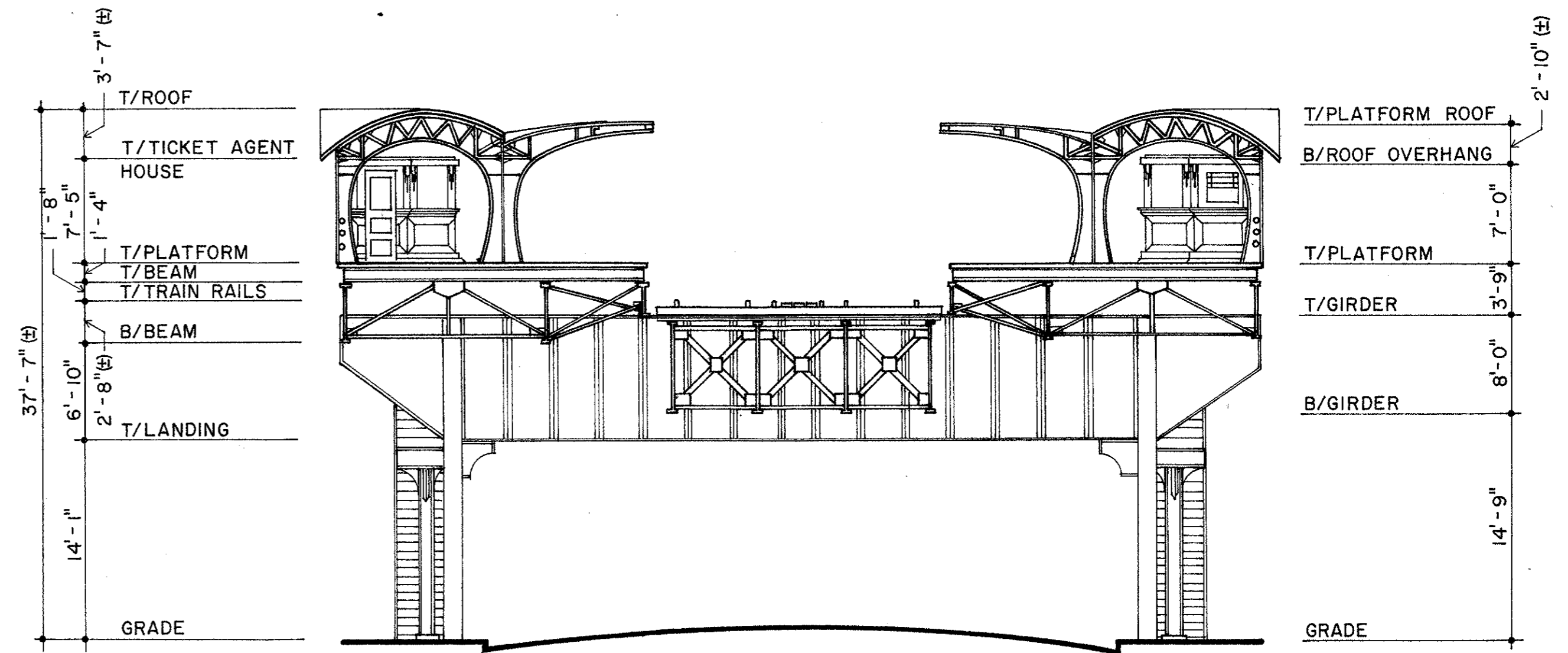
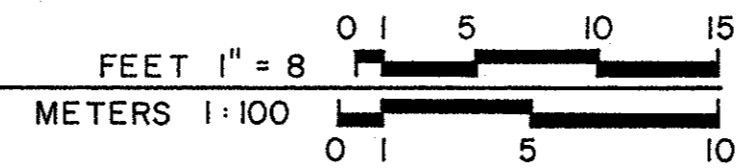
HISTORIC AMERICAN
 ENGINEERING RECORD
 IL - I - F

SHEET
 2 of 4

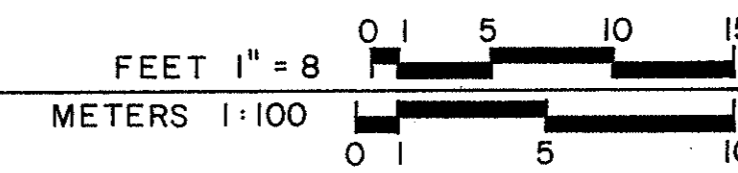
IF REPRODUCED, PLEASE CREDIT: HISTORIC AMERICAN ENGINEERING RECORD, NATIONAL PARK SERVICE, NAME OF DELINEATOR, DATE OF THE DRAWING



PARTIAL PLAN OF ORIGINAL 1897 STATION HOUSE, PLATFORM LEVEL



SECTION A-A
WELLS STREET



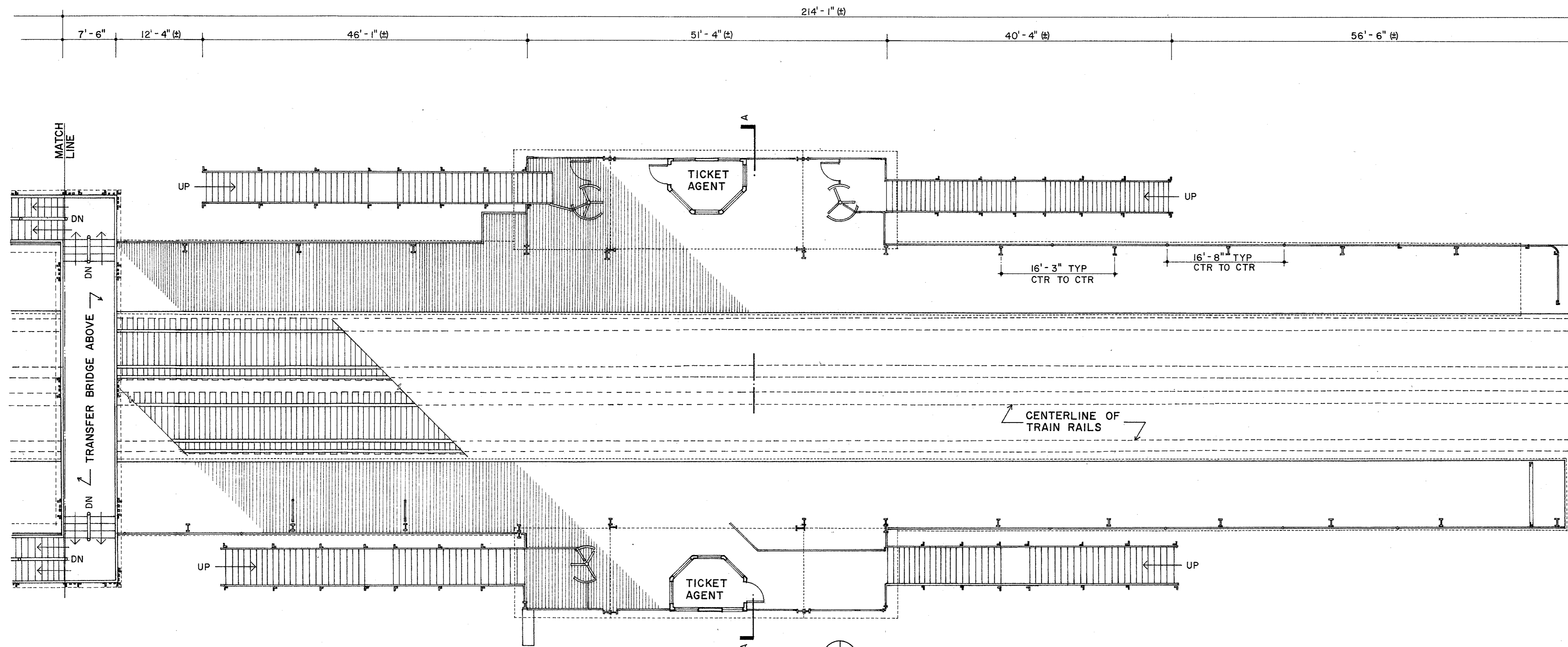
DELINEATED BY: LOURDES M. GONZALEZ, BILL POSPISHIL, 1994

ROCKY MOUNTAIN REGIONAL OFFICE/DENVER
NATIONAL PARK SERVICE
UNITED STATES DEPARTMENT OF THE INTERIOR

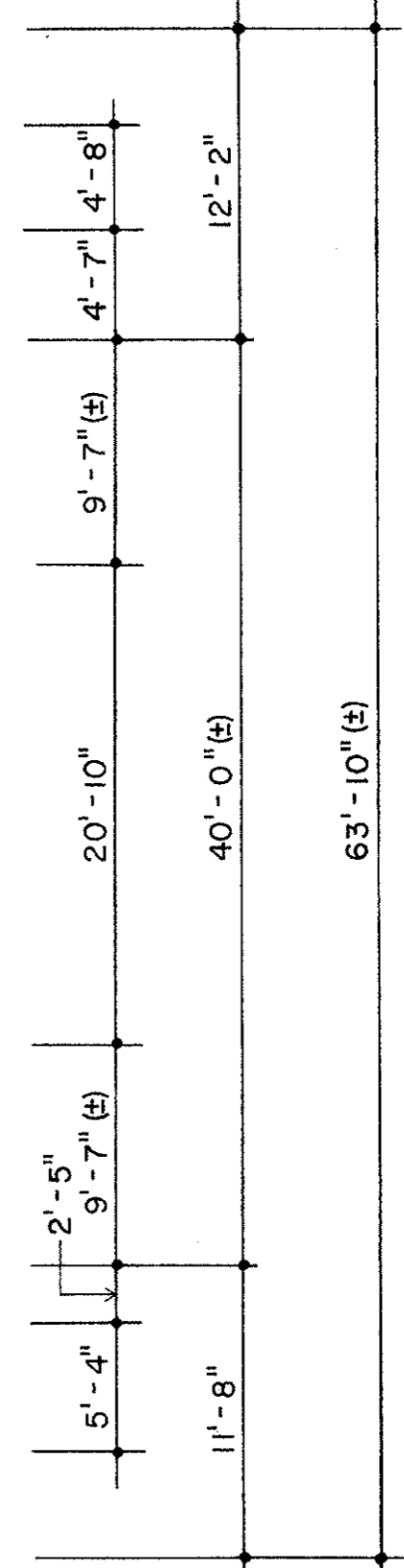
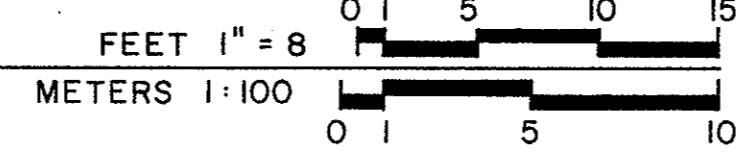
THE UNION ELEVATED RAILROAD, RANDOLPH/WELLS STATION
RANDOLPH/WELLS STREETS
CHICAGO
COOK COUNTY
ILLINOIS

HISTORIC AMERICAN
ENGINEERING RECORD
SHEET 3 of 4
ILL - 1 - F

IF REPRODUCED, PLEASE CREDIT: HISTORIC AMERICAN ENGINEERING RECORD, NATIONAL PARK SERVICE, NAME OF DELINEATOR, DATE OF THE DRAWING



PARTIAL PLAN OF 1913 ADDITION, PLATFORM LEVEL



16'-3" TYP CTR TO CTR
16'-8" TYP CTR TO CTR

CENTERLINE OF TRAIN RAILS

DELINEATED BY: BILL POSPISHIL, JEANNINE M. CRANE, 1994
ROCKY MOUNTAIN REGIONAL OFFICE/DENVER
NATIONAL PARK SERVICE
UNITED STATES DEPARTMENT OF THE INTERIOR

THE UNION ELEVATED RAILROAD, RANDOLPH/WELLS STATION
CHICAGO COOK COUNTY ILLINOIS

HISTORIC AMERICAN ENGINEERING RECORD
SHEET 4 OF 4
ILL-1-F

IF REPRODUCED, PLEASE CREDIT: HISTORIC AMERICAN ENGINEERING RECORD, NATIONAL PARK SERVICE, NAME OF DELINEATOR, DATE OF THE DRAWING