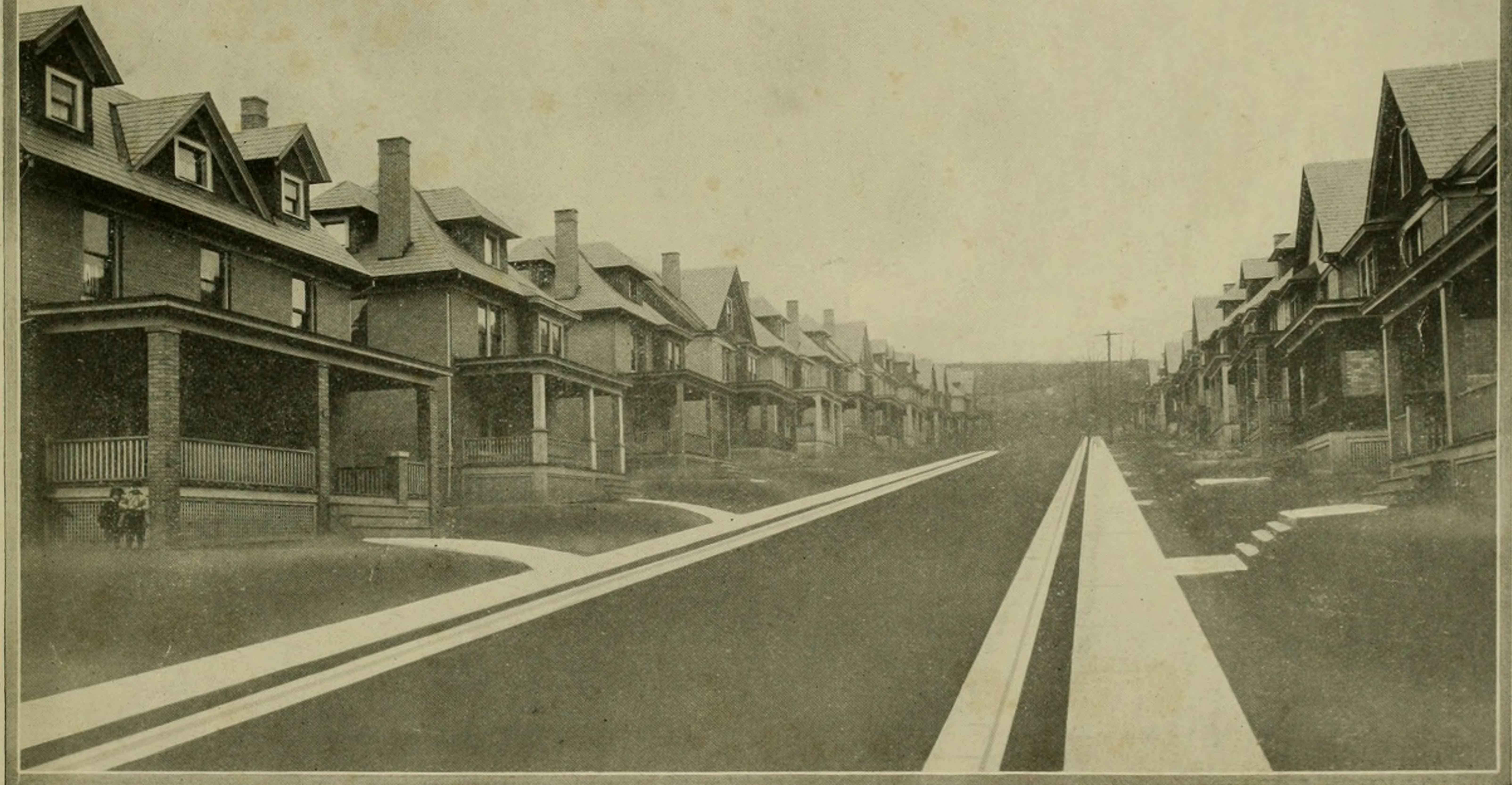


WOODLAWN
on the OHIO

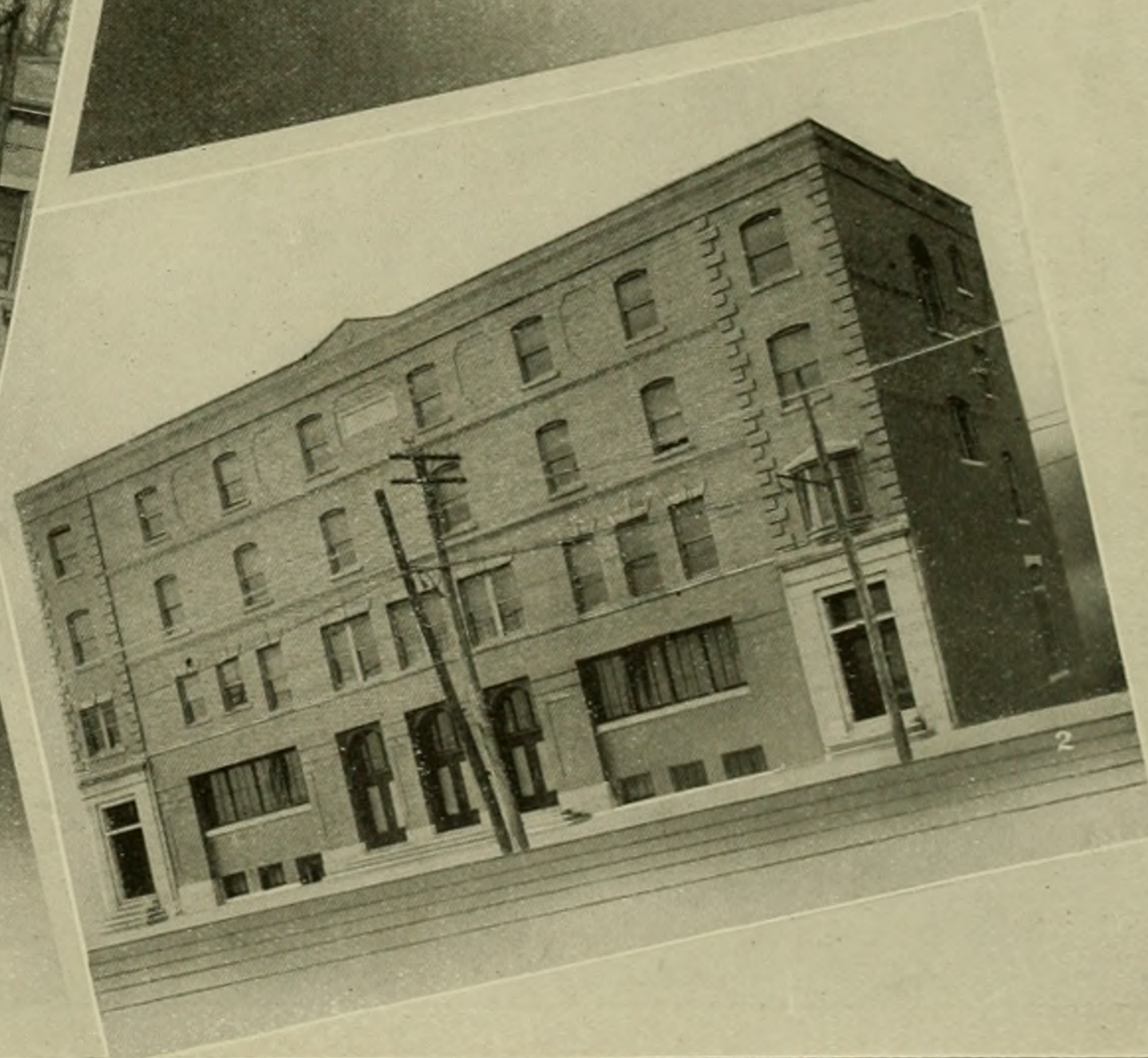
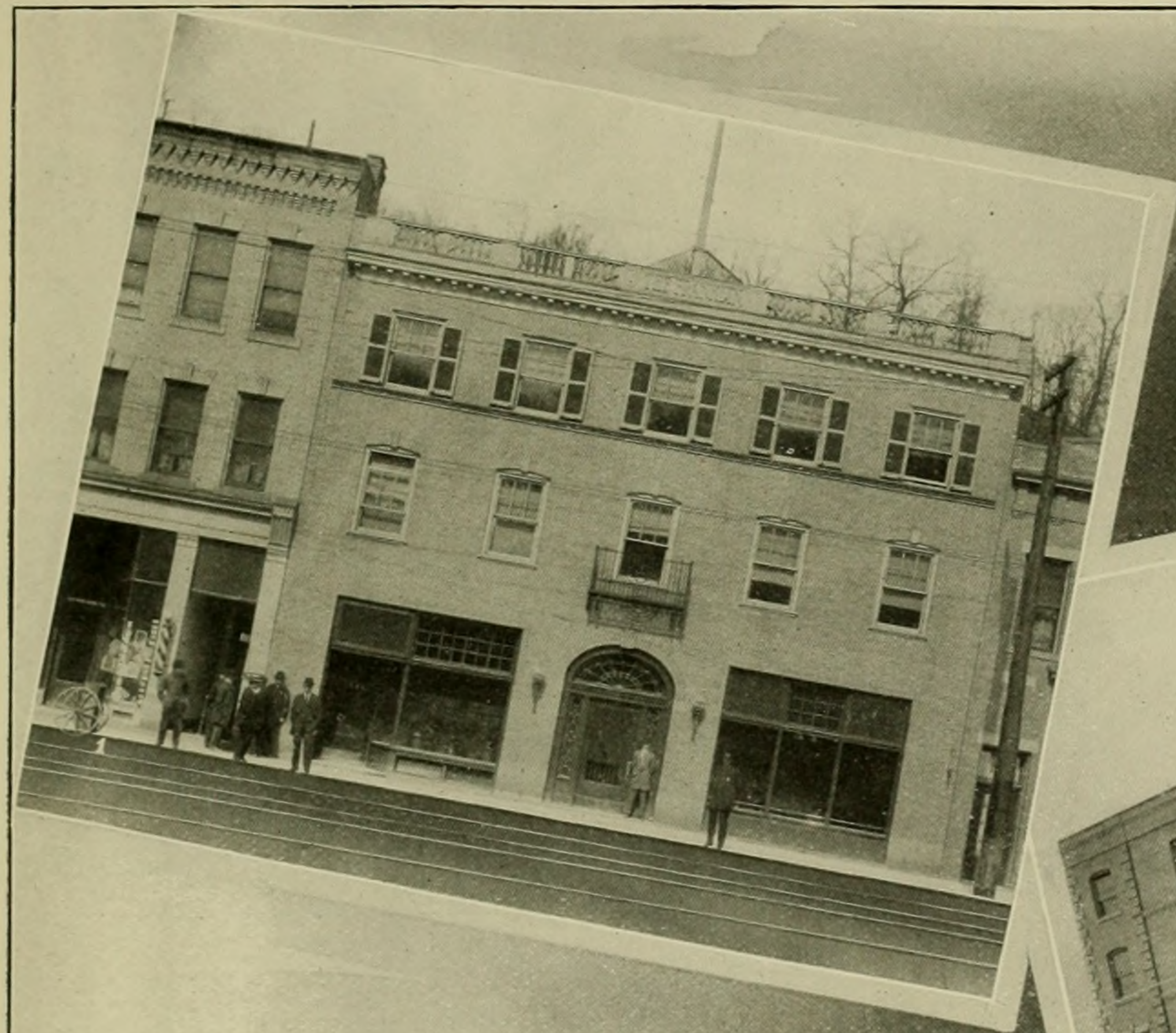
WOODLAWN ON THE OHIO.



A Home Street in Woodlawn.



(1) P. & L. E. Passenger Station at Woodlawn. (2) Freight Depot. (3) Passenger Platforms Connected by Subway.

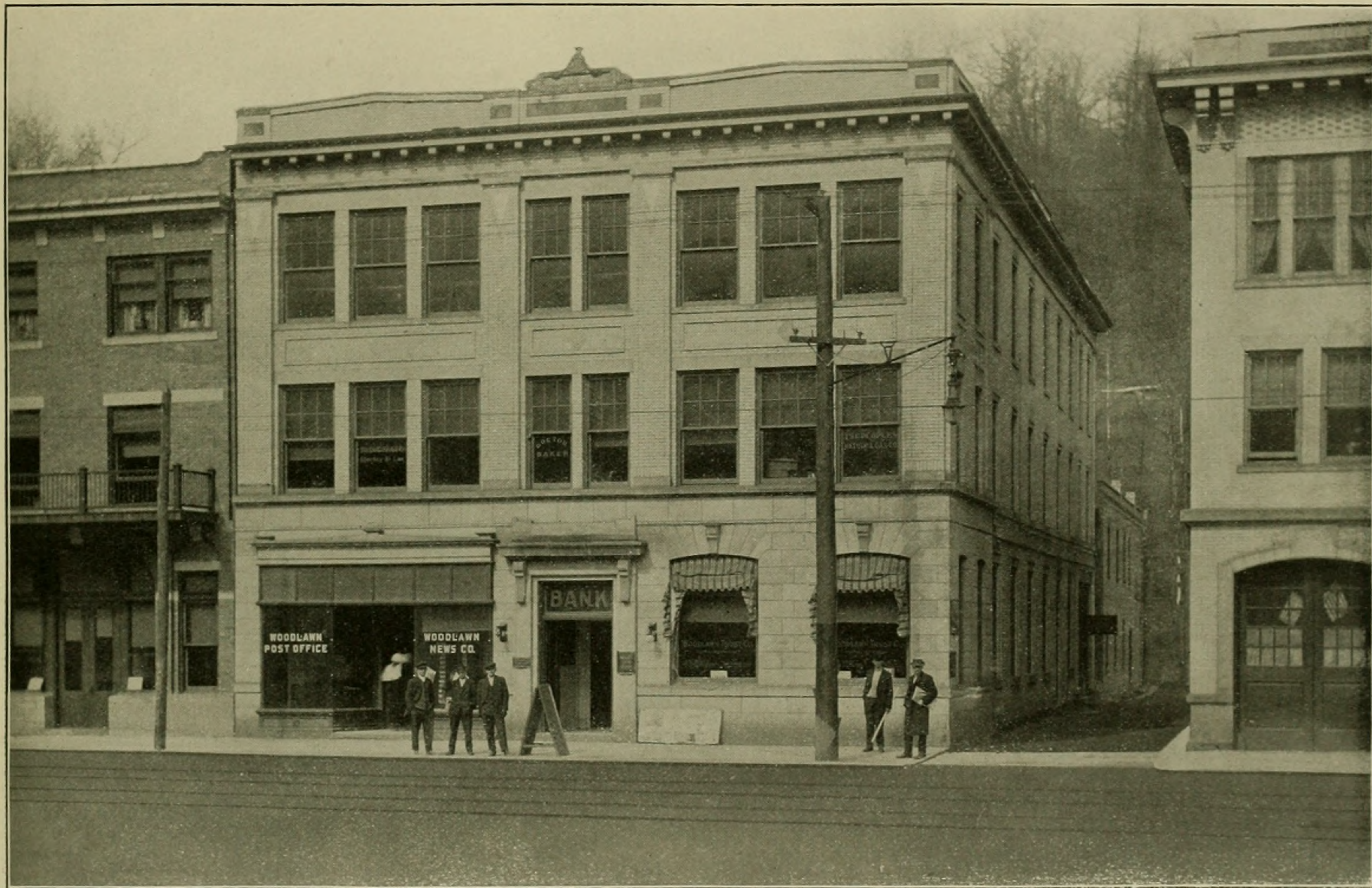


(1) Hotel Franklin. (2) National European Hotel.



MUNICIPAL BUILDING.

Containing offices of Mayor, Council Rooms, Fire Department and Police Headquarters.



WOODLAWN TRUST COMPANY.
Office Building and Woodlawn Post Office.



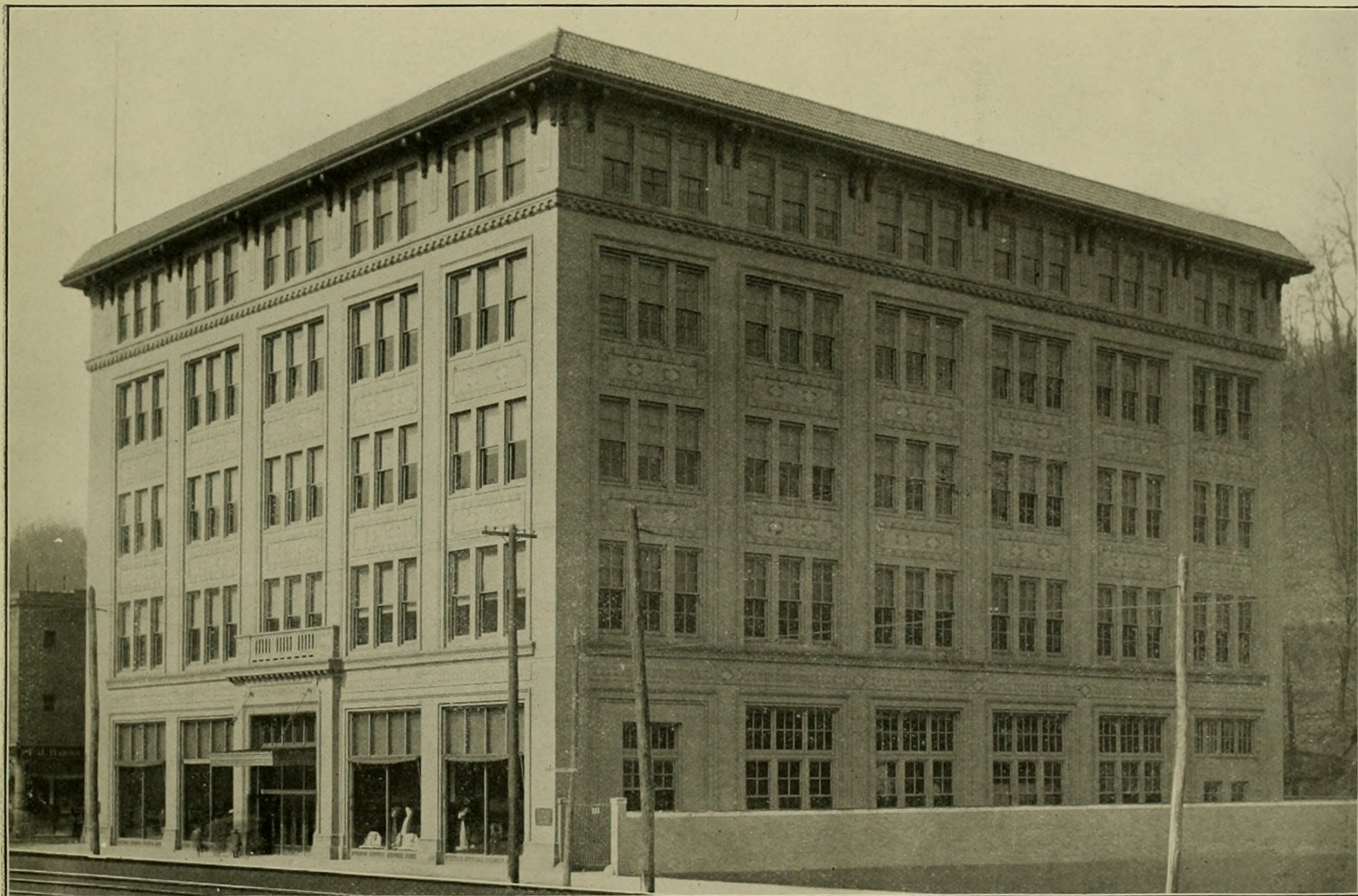
View along Franklin Avenue.



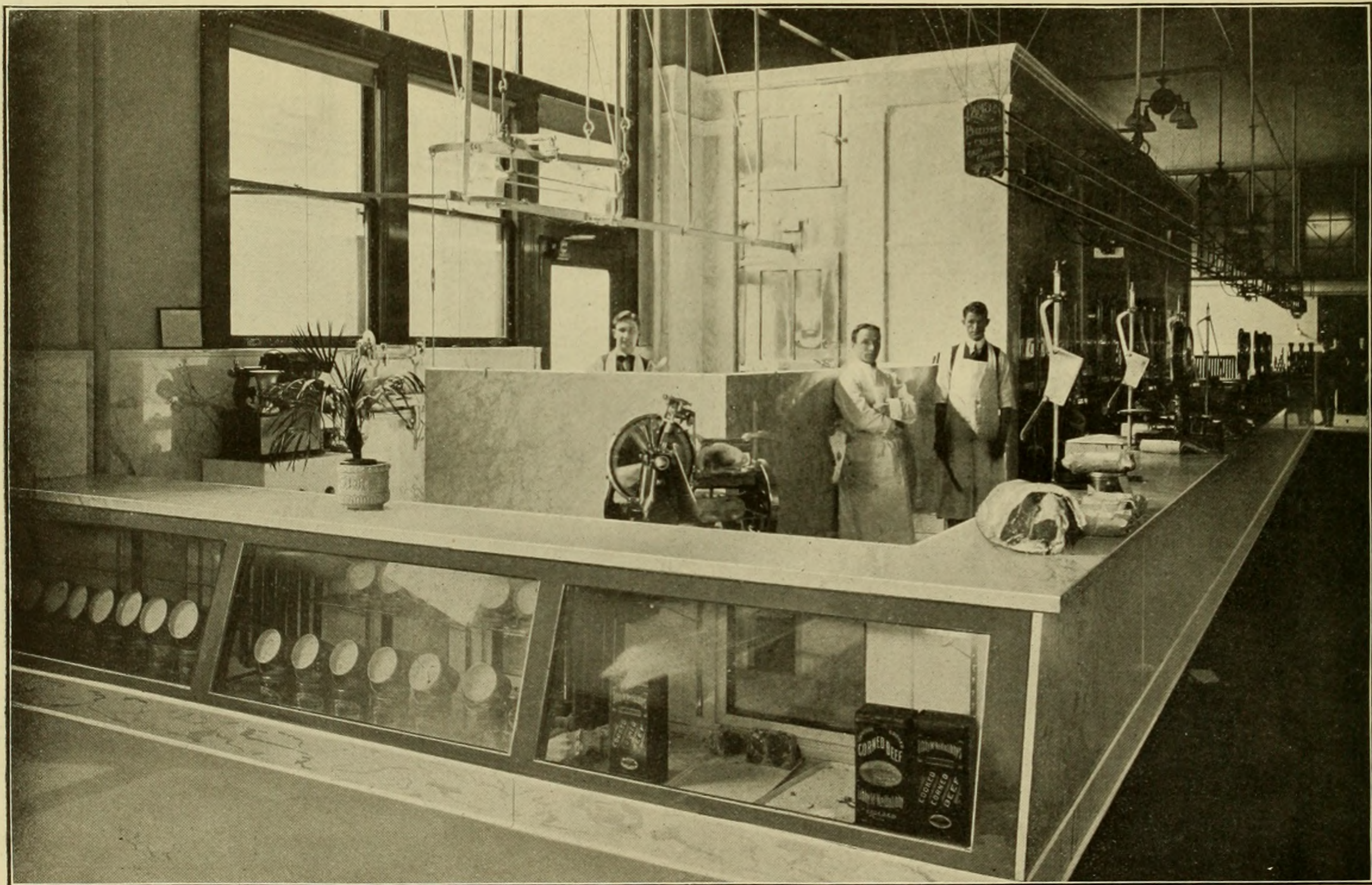
Some of Woodlawn's Business Blocks.



Some of the Street Cars which operate throughout Woodlawn, and pass the Jones & Laughlin Works.



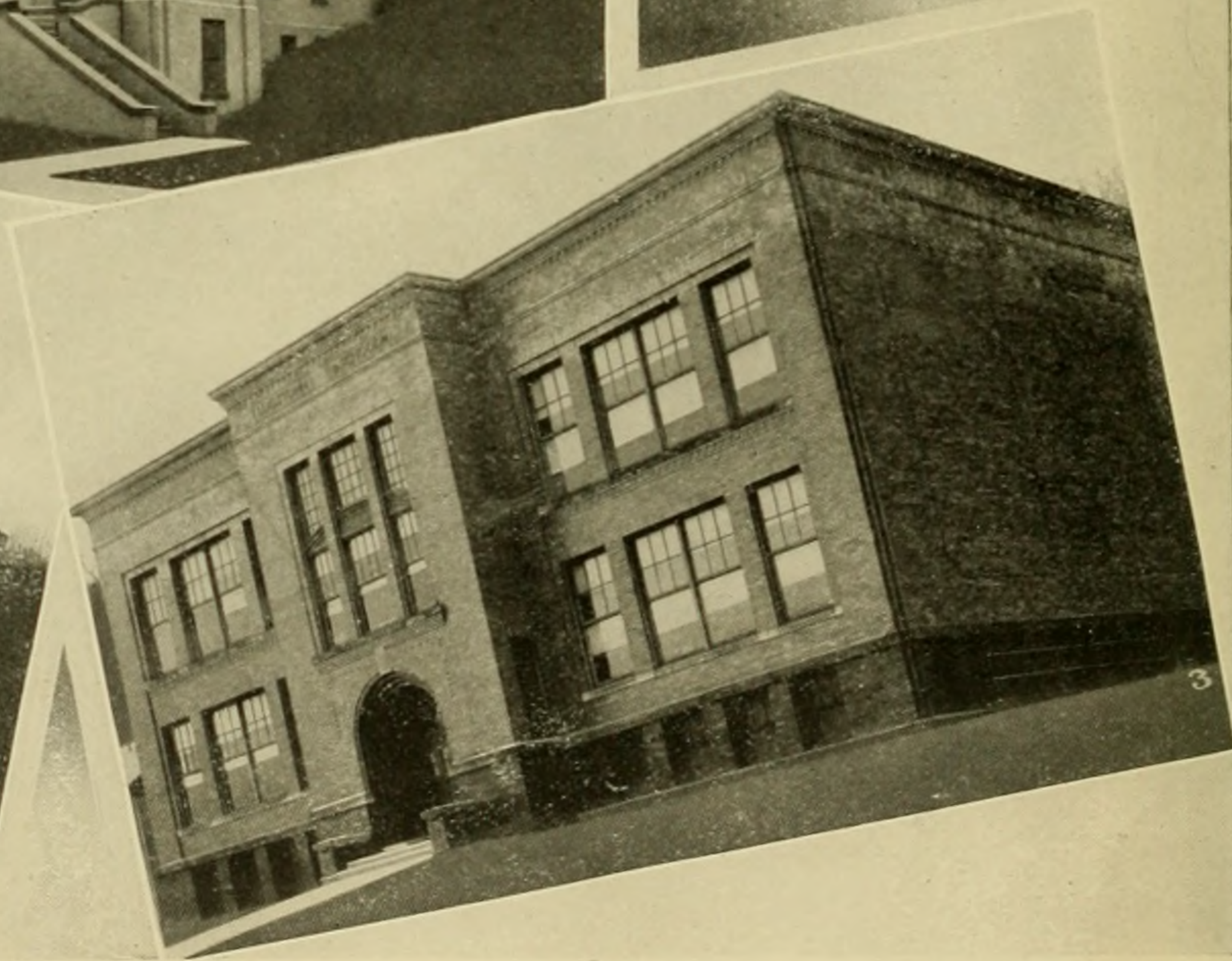
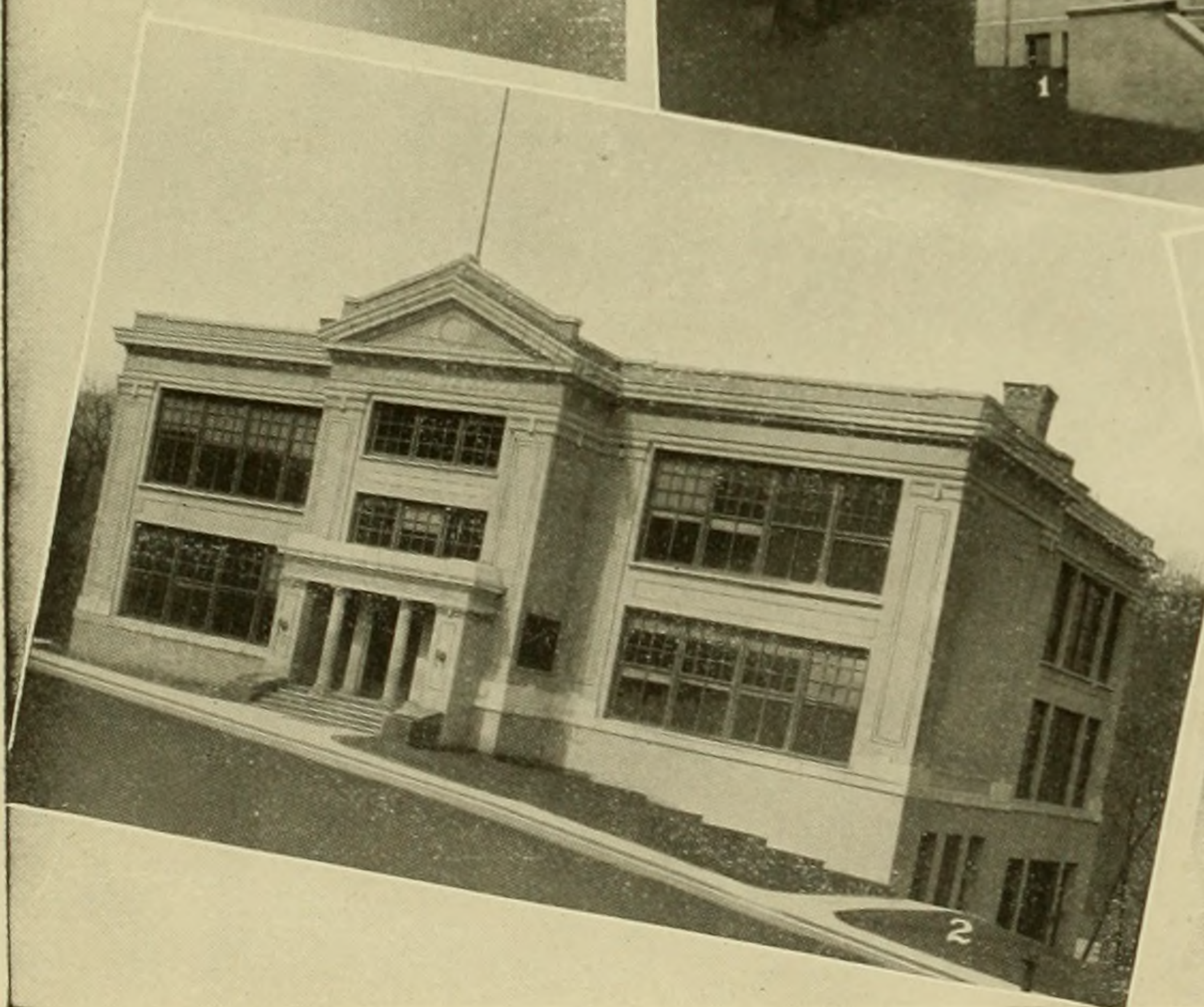
Pittsburgh Mercantile Department Store.



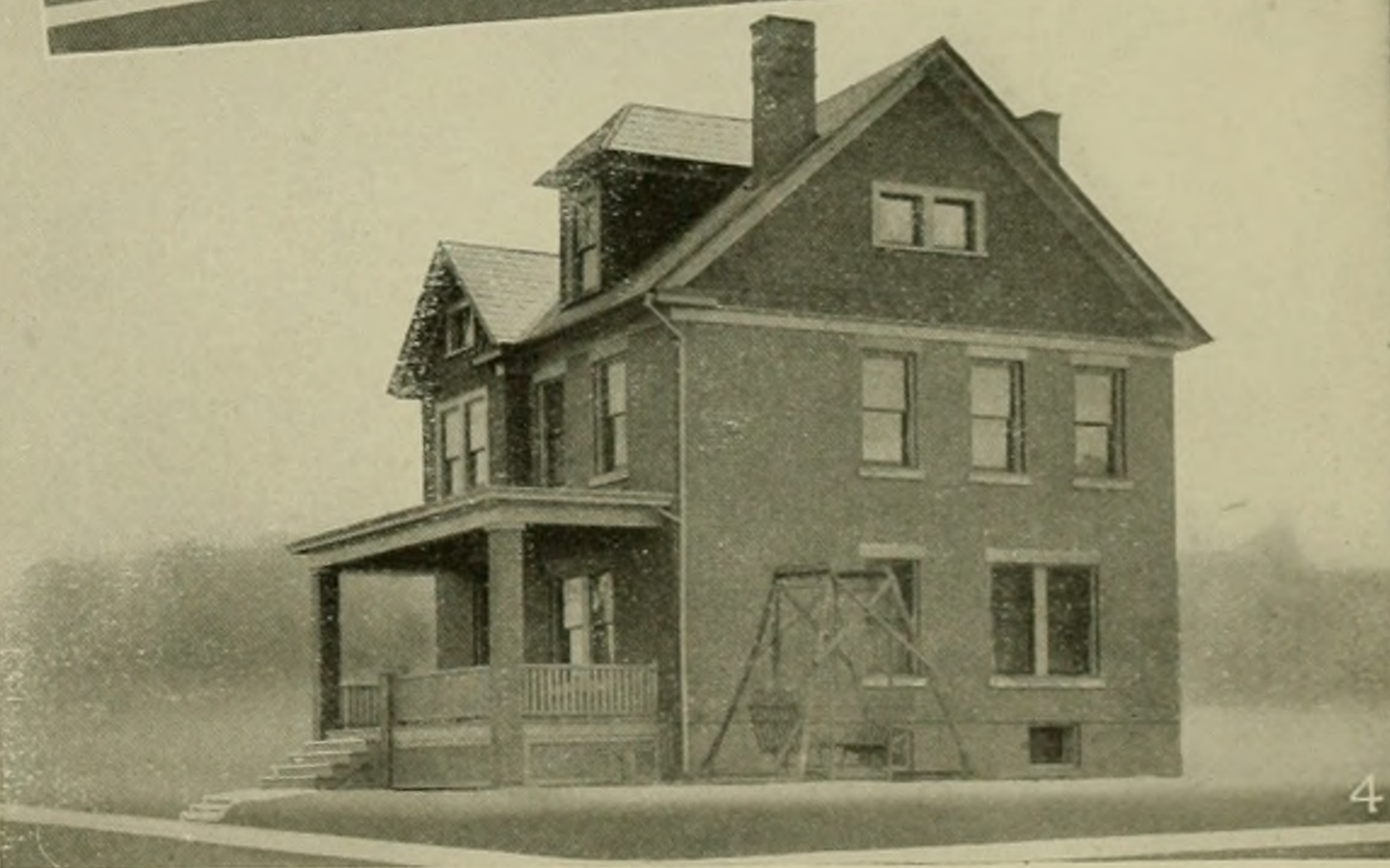
Meat and Fish Market in the Department Store.



Interior View of the New Department Store.



(1) First Presbyterian Church. (2) New 10-Room High School. (3) One of the Grammar Schools.



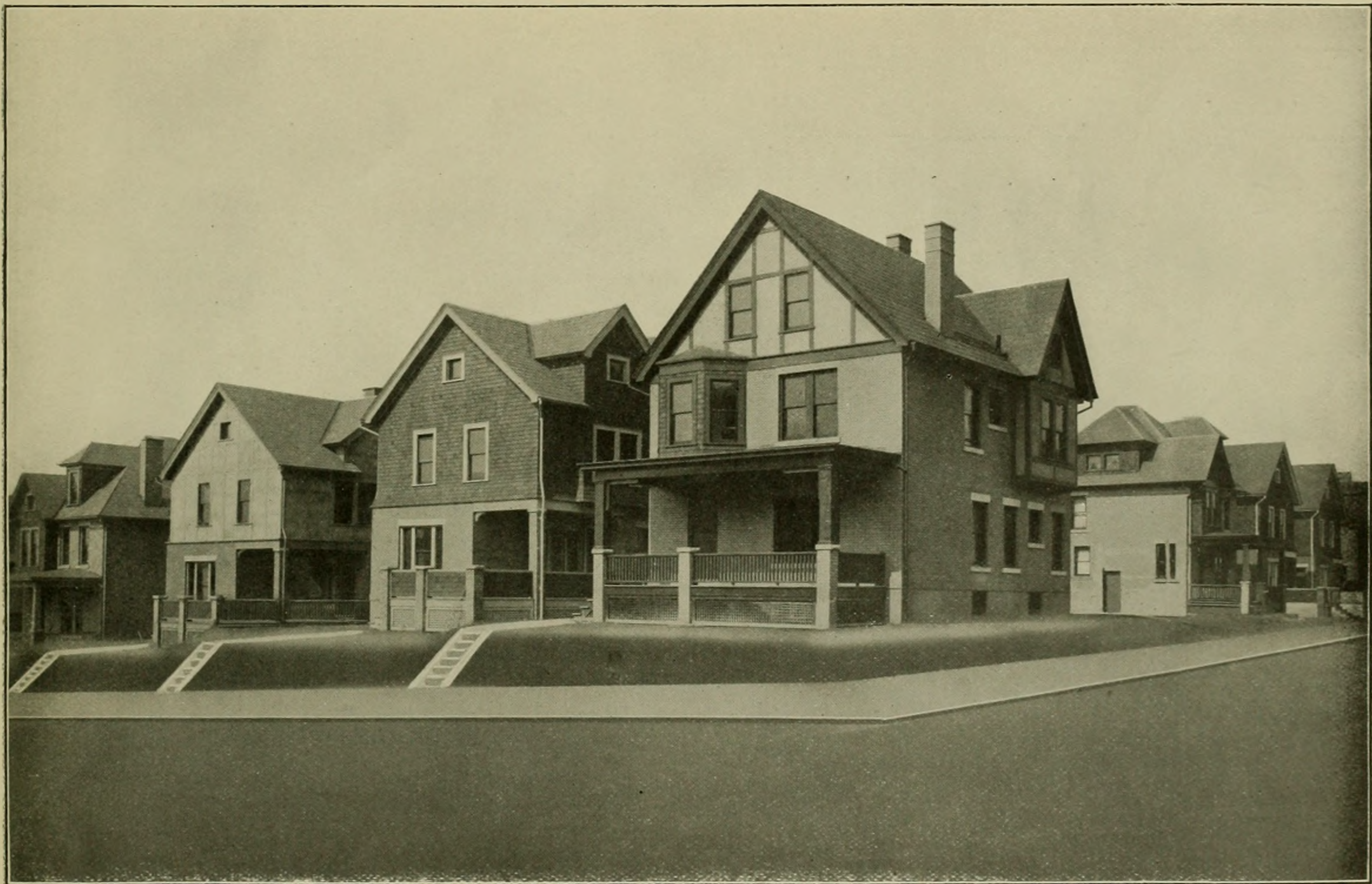
TYPES OF WOODLAWN HOMES.

Quite a number of houses like these may be found in Woodlawn and many others will be constructed in the future. They indicate the high character of the residence sections of this wonderful new city.



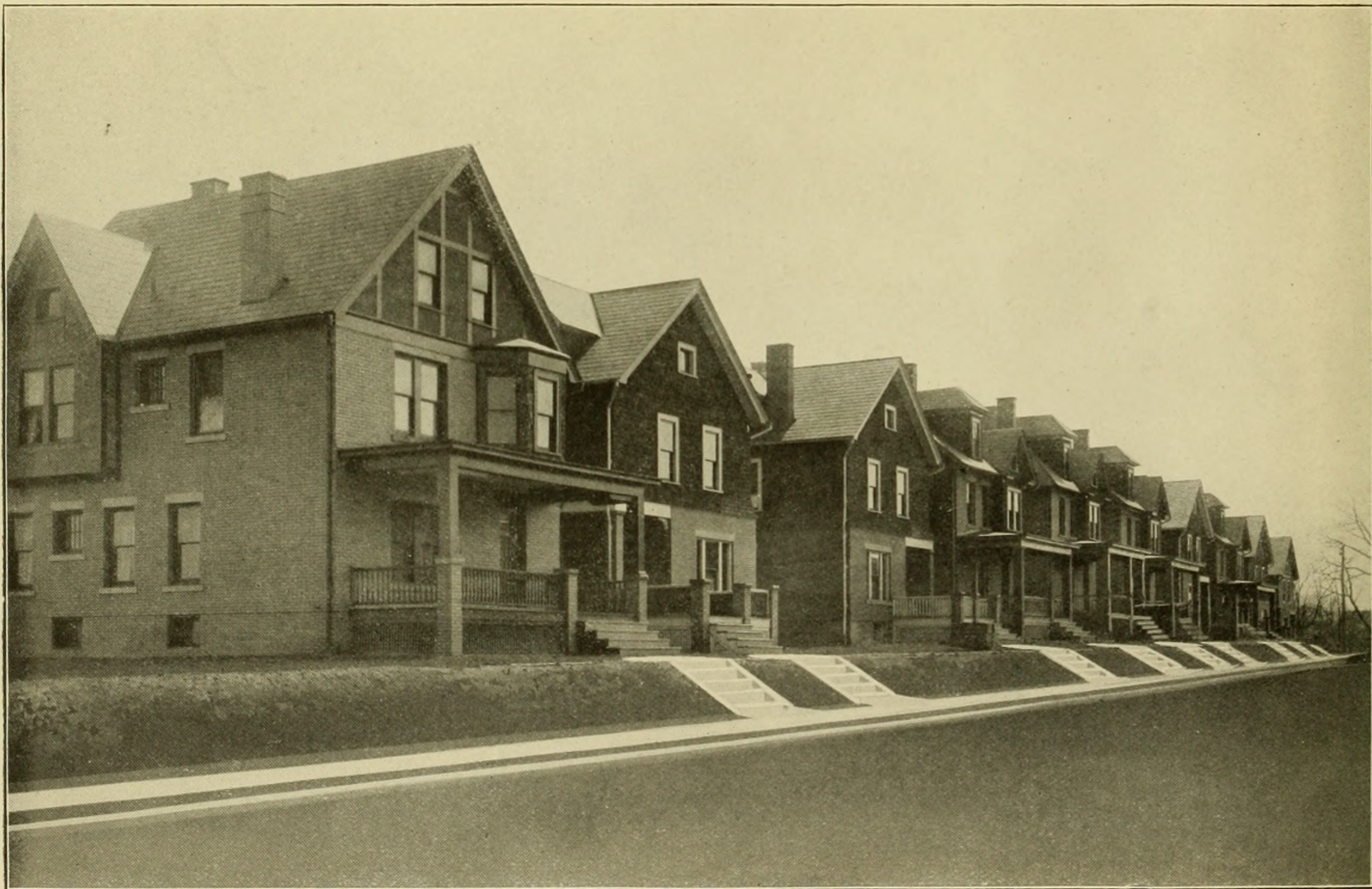
ARTISTIC MODERATE-PRICED HOMES.

Equipped with Baths, Hot and Cold Water, Natural Gas, Electric Light, Furnaces, Porches, Attics, Large Lawns. They front on macadam streets with concrete walks. To be sold on easy terms.



WHOLE STREETS OF THESE PRETTY HOUSES.

Modern and convenient in every detail. Ranging from 7 to 9 rooms, on macadam streets, near open fields and woods. Ideal homes all the year 'round and for sale on liberal conditions.



Homes like this in Woodlawn, with every up-to-date convenience, can be bought on the most reasonable terms.

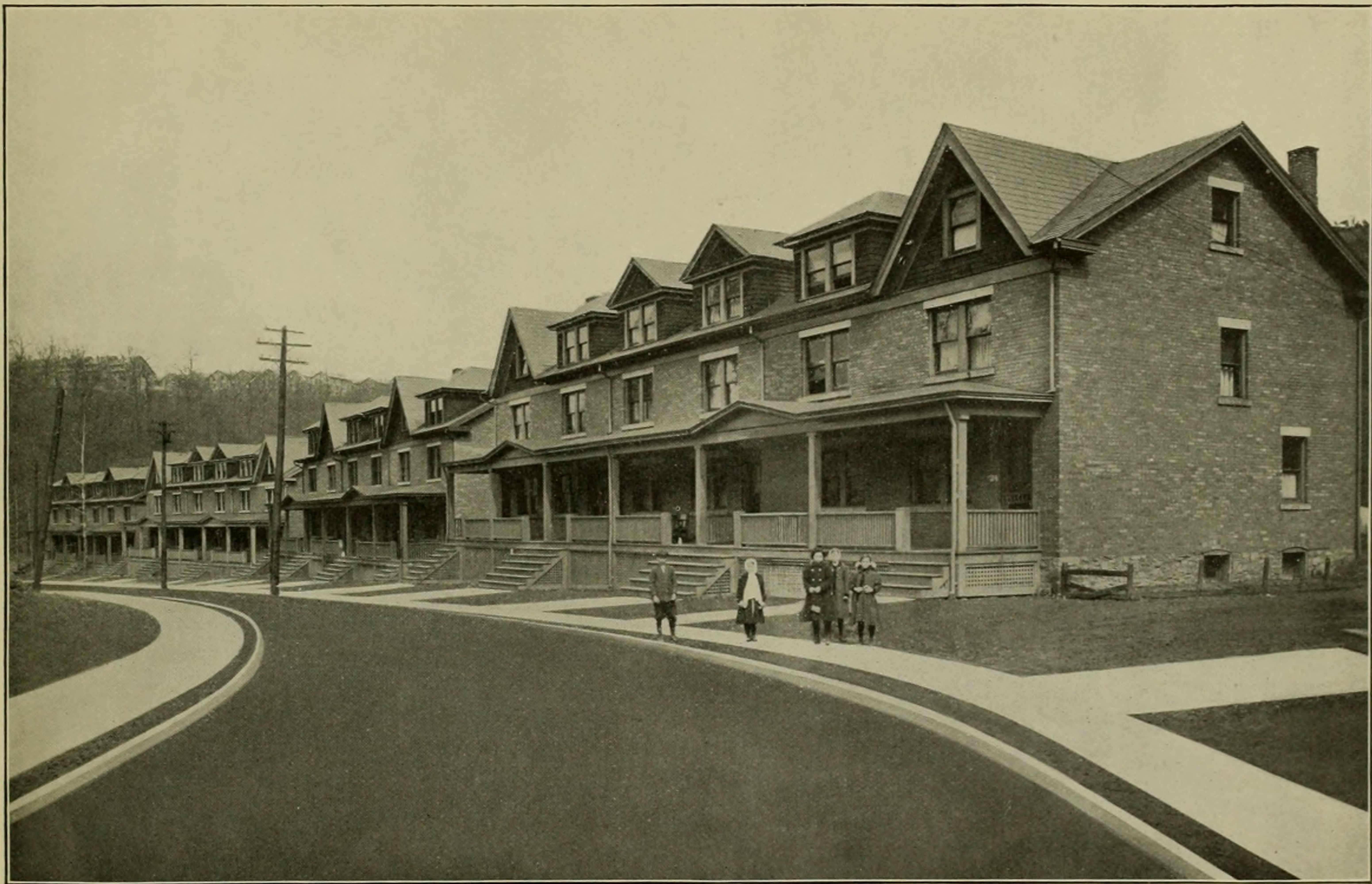


Houses of this class sell in other Pittsburgh suburbs for much more money than is asked in Woodlawn. No finer homes anywhere.



WOODLAWN TERRACES.

Containing all conveniences and situated in pleasant surroundings.

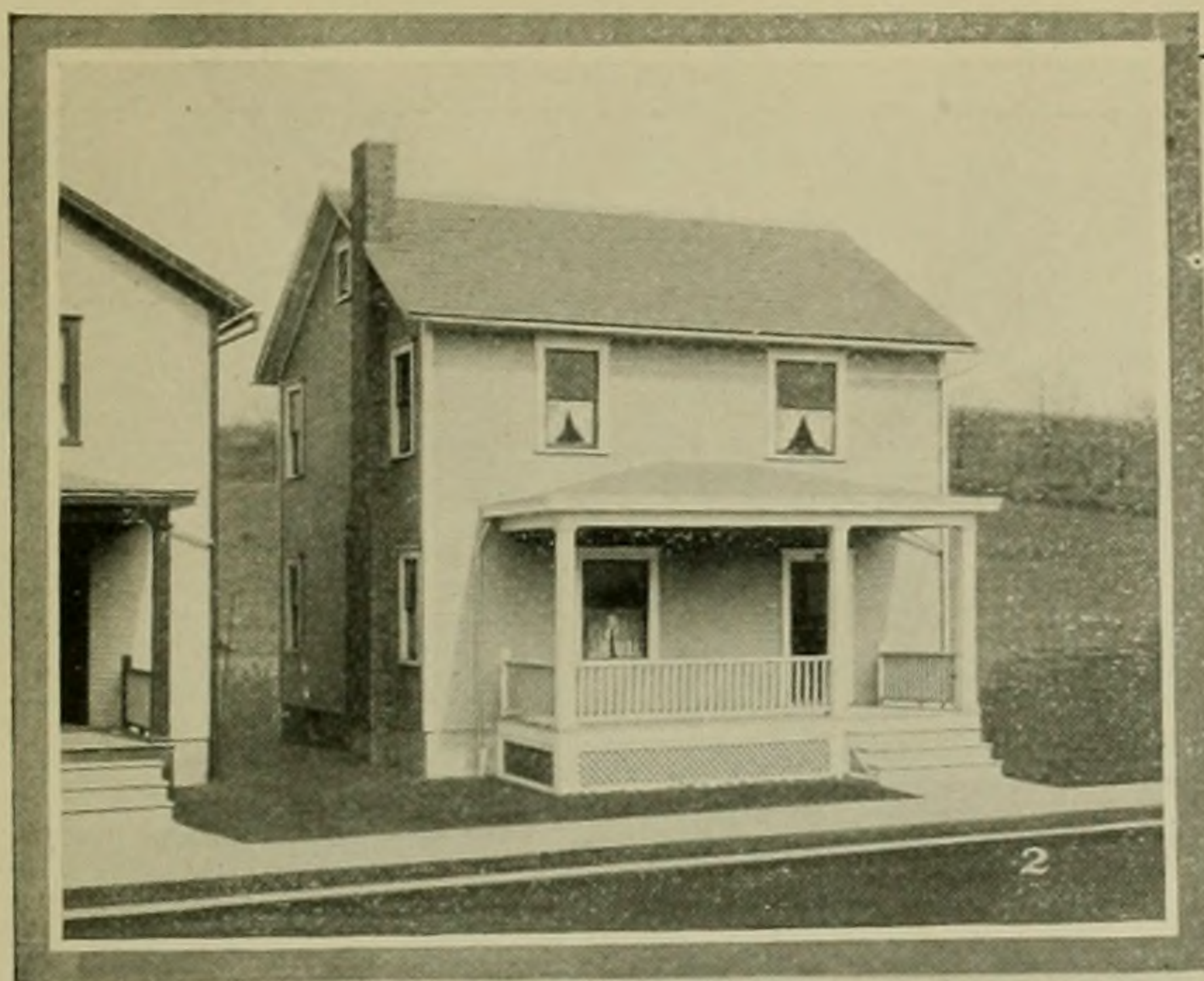


TERRACES FOR SIX FAMILIES.

Groups of pretty homes for rent, containing Furnaces, Gas, Water, Electric Light and Baths.

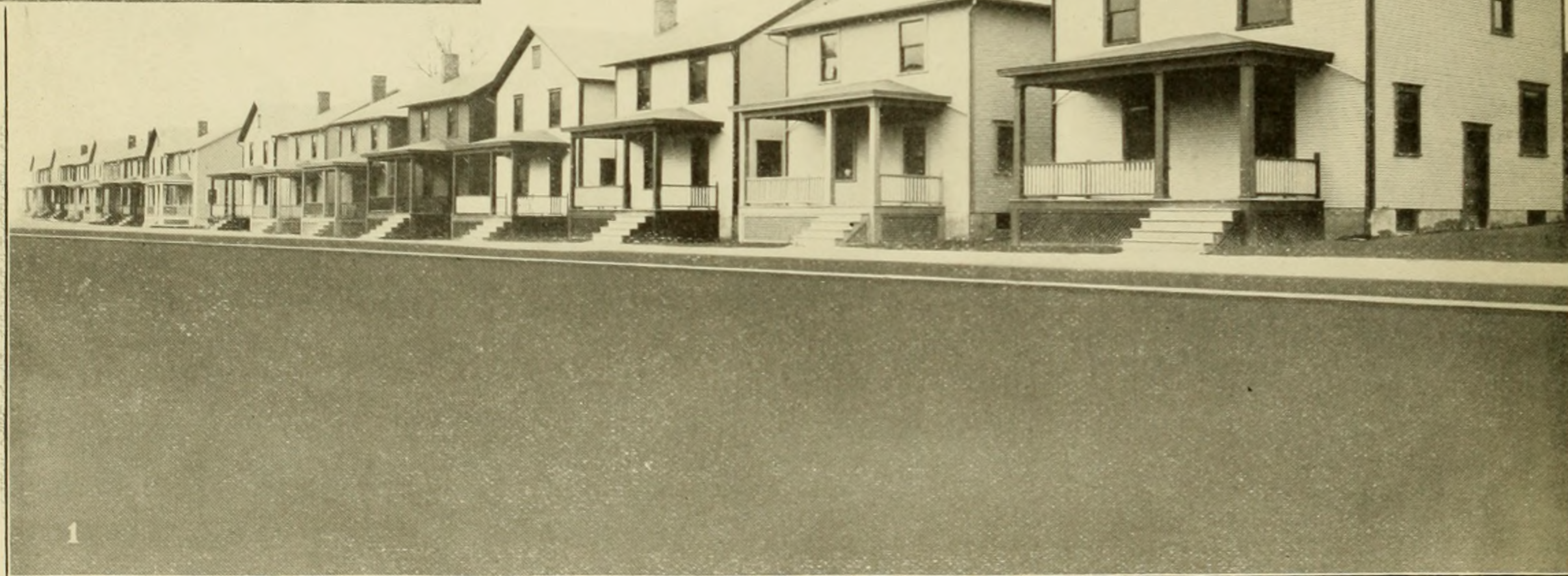
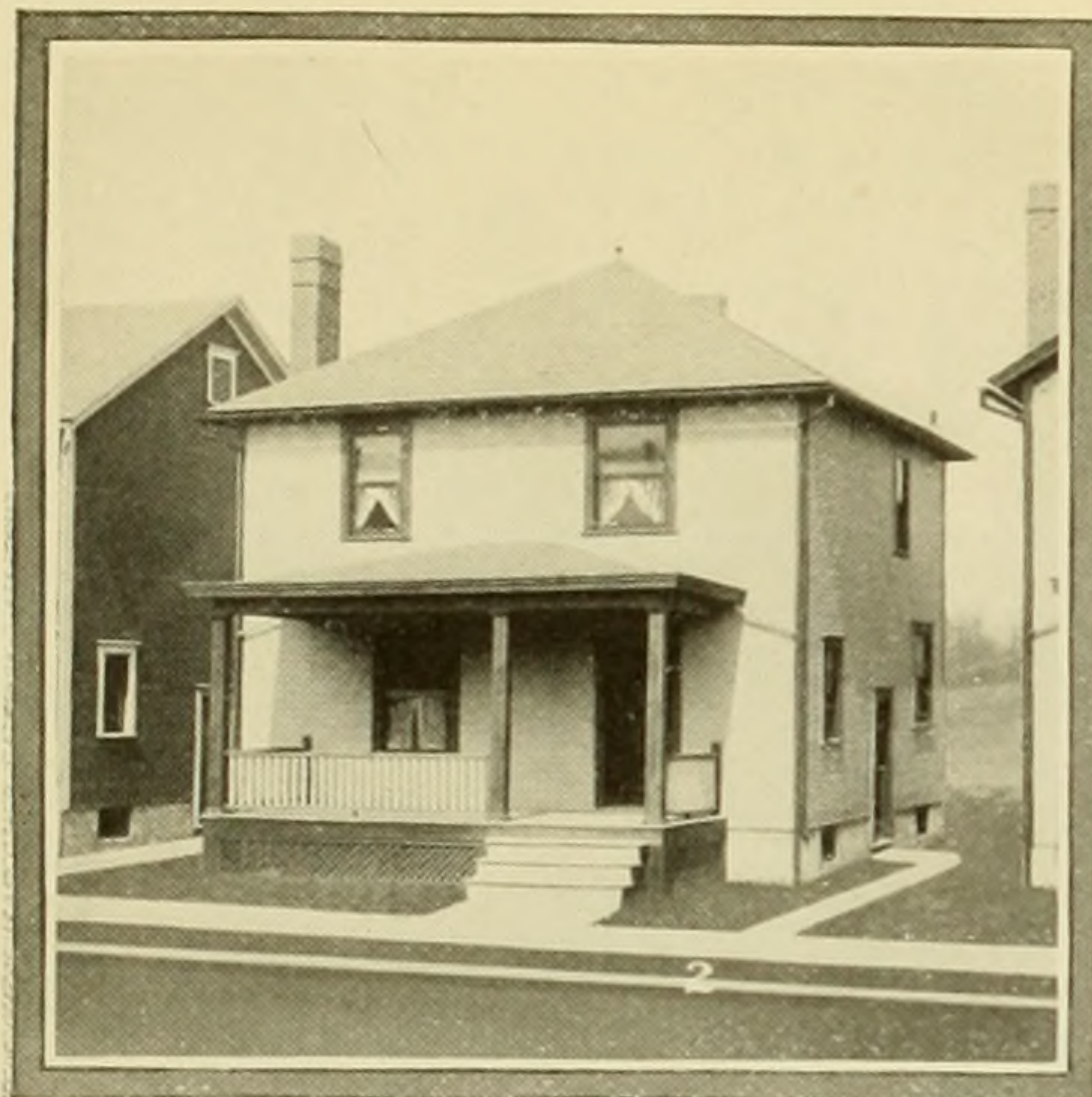


Terraces of six houses each.



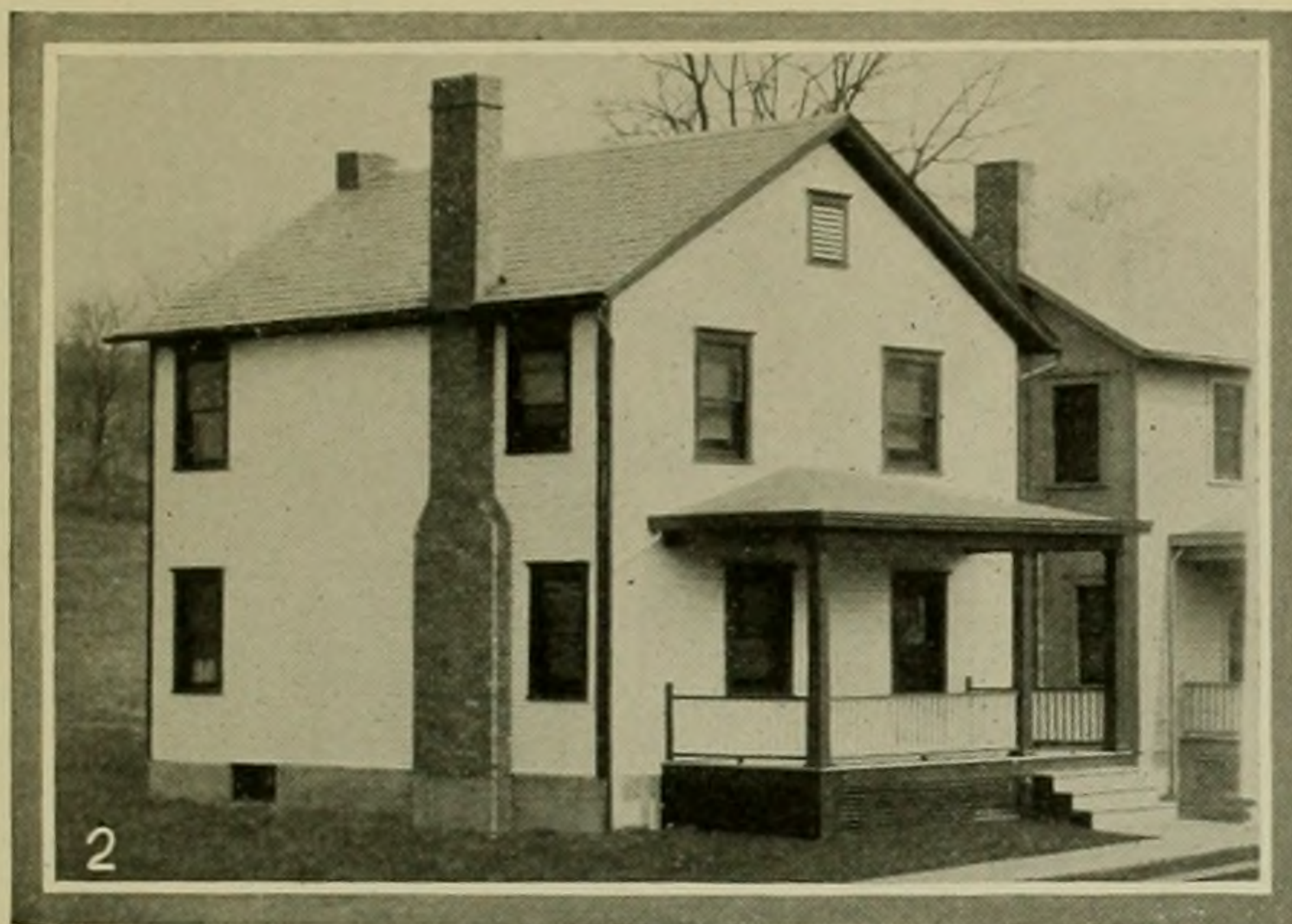
HOMES ANY MAN CAN OWN.

These model houses are designed for the purse of the man who wants a good but not costly home, in pleasant surroundings.
Ask about these houses. Picture in corner is a closer view of one of them.



ATTRACTIVE HOMES ON A WIDE STREET.

These are houses built in the best possible manner, with all conveniences, yet can be bought for surprisingly little money. Picture in corner shows closer view of one of these homes.



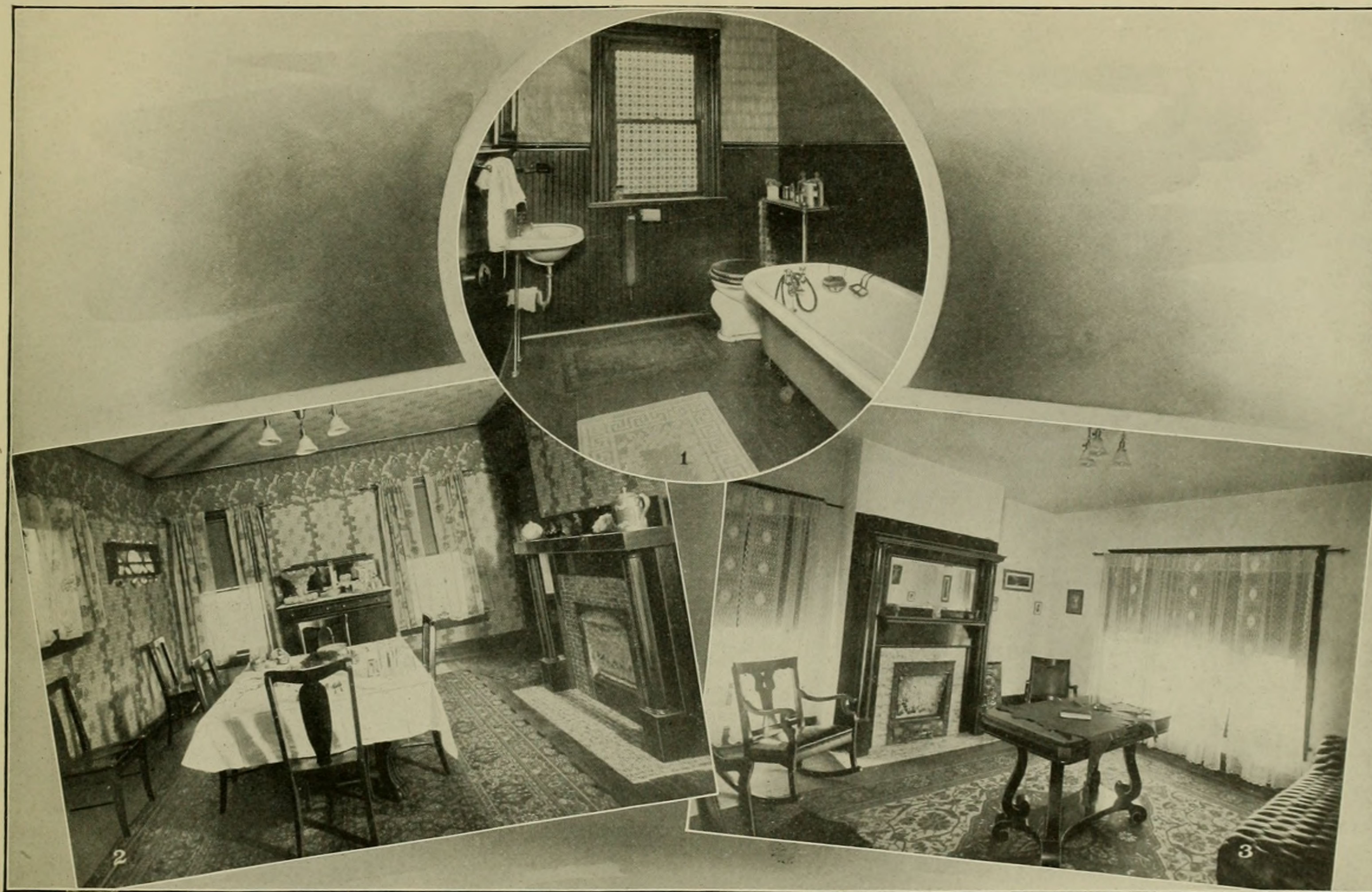
IDEAL LIVING CONDITIONS HERE.

The wide streets, attractive homes, modern conveniences and pure air and water help make Woodlawn attractive to workers' families.

Picture in the corner is a closer view of one of the houses on this street.



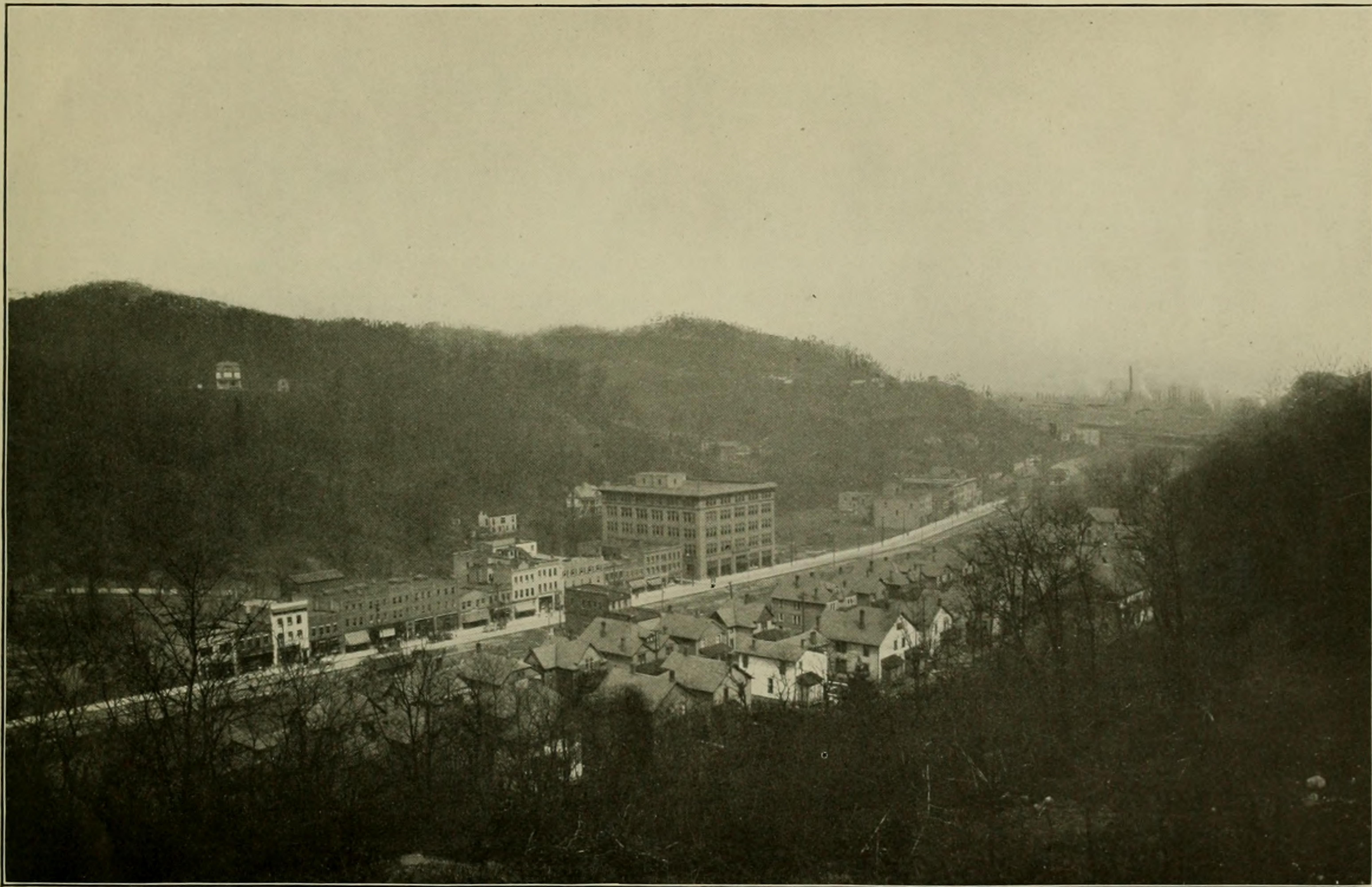
TWO-FAMILY HOUSES.
Containing Gas, Water, Ranges, Baths and other Conveniences.



SOME INTERIOR VIEWS.
Showing the comfortable arrangement of Woodlawn Homes.



A COLONY OF GOOD HOMES.
View of Moderate-Priced houses in Plan 12.



Franklin Avenue, Woodlawn.

Woodlawn on the Ohio.

Woodlawn, the new city adjoining the new furnaces, steel mills, rod, wire and tin mills of the Jones & Laughlin Steel Company's Aliquippa Department, has become a beautiful new suburb to Pittsburgh, one which the greater city is proud of. It is today a town of over 5,000 inhabitants and is destined to grow in a few years into a busy city of 25,000 or 30,000 people. There is no more active place in the Pittsburgh district today than Woodlawn with its hundreds of pretty homes, its clean paved streets, its dozens of modern stores, its churches, schools, lodges, clubs and its ample transportation facilities.

Woodlawn nestles in a beautiful valley 19 miles down the Ohio from Pittsburgh, in Beaver County, and spreads out its cosy homes upon the surrounding hills. Its streets are paved with brick in the business section and macadam in the residence section, concrete sidewalks, shade trees, sewered and electric lighted. It has every modern utility, such as natural gas, electric light, a pure and potable water supply, and ample police and fire protection. Its school system is splendidly organized and its opportunities for

delightful home and neighborhood life are not equalled in this end of the state. The new works are attracting iron and steel workers of the better class and the new town is designed to give them the very best homes amidst the most beautiful surroundings. The houses put up by the Woodlawn Land Company contain from 6 to 10 rooms and bath, are constructed of brick, cement or frame or combinations of these materials, and are in every respect as attractive and convenient as any suburban town in the district can show, and are above the average city home in point of comfort and convenience.

Woodlawn has grammar schools and a beautiful high school, a five-story department store, a score of other stores, banks, drugstores, churches, physicians' offices, and all classes of enterprises.

There is a police department and fire department at Woodlawn and a complete electric police and fire call system. There is also electric light for streets and homes, gas for cooking and light, and a fine system of pure filtered water from artesian wells.

For a Home or for Investment.

Woodlawn is worth consideration for several very good reasons; first as an ideal town in which to live and rear a family; then as a good place in which to invest your savings in real estate, on account of its certain and rapid development; and further, because of its many opportunities for employment, not only of the men but also of the young women of the family.

As a home city Woodlawn offers many inducements. It is new, clean, modern in every detail and so situated among the wooded hills and in a beautiful valley that it can never become a barren, ugly spot, but will always be a park-like city, with woods and fields for the children to wander in and grow strong and sturdy in the clean out-of-doors.

The attractive character of the homes already erected and the building restrictions as to future homes secure Woodlawn from being marred and made hideous by any "boom" growth. This operates to make it a safe place for investment. Woodlawn property, now put on the market for the first time, is certain to enhance in value. The early investors will reap a satisfactory reward for their foresight.

Woodlawn offers many opportunities for the businessman. There are already a score of modern stores along Franklin Avenue and many splendid sites right in the heart of the town remain to be sold to the merchants and investors of the future. It is freely predicted that the population of Woodlawn (today 5,000) will be doubled in a year or so and will eventually reach 25,000 or 30,000 and so become the metropolis of Beaver County.

Any of the houses erected at Woodlawn will be sold on terms. The better class of iron and steel workers is already being attracted to the new community and it is estimated that a great many of the pretty new houses will be taken during the summer. A number of new business blocks are also about to be erected and other improvements are now under way. Woodlawn is situated directly on the main line of the Pittsburgh and Lake Erie Railroad, which has built a handsome new station there, and has frequent and fast trains to the city, putting Woodlawn in the same class as Oakmont, Sewickley, Carnegie, Homestead or McKeesport, so far as being in touch with Pittsburgh is concerned.

How to get to Woodlawn.

Go to the Pittsburgh & Lake Erie Station (New York Central Lines) at the south end of the Smithfield Street Bridge, and take any of the following trains.

TRAINS TO WOODLAWN.

(Central Standard Time, 1 hour slower than City Time)

Week Day Trains — 5:10 A. M. - 6:50 A. M. - 8:00 A. M.
9:30 A. M. - 11:55 A. M. - 1:40 P. M.
3:35 P. M. - 4:20 P. M. - 4:45 P. M.
5:25 P. M. - 9:00 P. M. - 10:30 P. M.
10:55 P. M.

Sunday Trains — 5:10 A. M. - 8:00 A. M. - 11:55 A. M.
3:00 P. M. - 5:25 P. M. - 9:00 P. M.
10:30 P. M.

TRAINS FROM WOODLAWN TO PITTSBURGH.

Week Day Trains — 4:59 A. M. - 5:40 A. M. - 5:55 A. M.
6:13 A. M. - 7:03 A. M. - 7:22 A. M.
8:46 A. M. - 11:48 A. M. - 12:52 P.
M. - 3:24 P. M. - 4:39 P. M. - 6:08 P.
M. - 6:25 P. M. - 9:40 P. M.

Sunday Trains — 5:55 A. M. - 6:13 A. M. - 8:24 A. M.
11:48 A. M. - 3:24 P. M. - 4:39 P. M.
6:25 P. M. - 9:40 P. M.

There will be slight changes in this schedule in June to improve the service.

Advantages of Woodlawn.

A park-like town of beautiful homes.

Paved streets.

Pure water from artesian wells.

Pay-enter street cars.

Modern stores of all kinds.

A five-story department store.

Churches of all leading denominations.

A beautiful 10 room modern high school.

Modern brick public schools and competent corps of teachers.

Excellent train service to Pittsburgh.

Many opportunities for employment.

Ideal home town.

Good neighbors.

Homes for sale on easy conditions.

Electric light, natural gas, pure water and sanitary sewerage system.

Clean, pure air.

Like living in the country.

Groves and fields for the children to play in.

Really a suburb of Pittsburgh.

Property will rapidly increase in value.

HOW TO BUY A HOME

or site for a business house.

Pretty, comfortable homes like those shown in these pages, can be bought at prices ranging from \$1,750 to \$4,500, on easy terms.

The homes which sell for \$1,750 are pretty bungalow-type cottages of five rooms and bath. They are new, modern and cosy.

A very pretty and attractive six-room home can be bought for \$2,300. This includes all the modern conveniences, such as hot and cold water, gas, bath and large kitchen.

A home of 8 or 9 rooms built of brick can be bought for only \$4,500. These homes are equal in every respect to houses in Pittsburgh which sell for \$7,500 or \$8,000. As a pure investment these houses are worth looking up.

As homes they are ideal, being situated in large lawns, near groves, having baths, gas, electric lights, furnaces, hot and cold water and large, airy rooms.

Terms of Sale.

Terms can be made on every house. The easy payment plan is an ideal one. By this plan you can buy a home for 10% down and 1½% per month. If you desire to pay cash a 5% discount will be allowed. Business lots can be bought on the same terms. There are some very desirable lots on Franklin Avenue, the main business street of Woodlawn, at \$1,875. Home sites can be bought from \$400 up.

WOODLAWN LAND COMPANY

210 Woodlawn Trust Building

- - - - -

WOODLAWN, PA.



Jones & Laughlin Office Building—Aliquippa Works.

