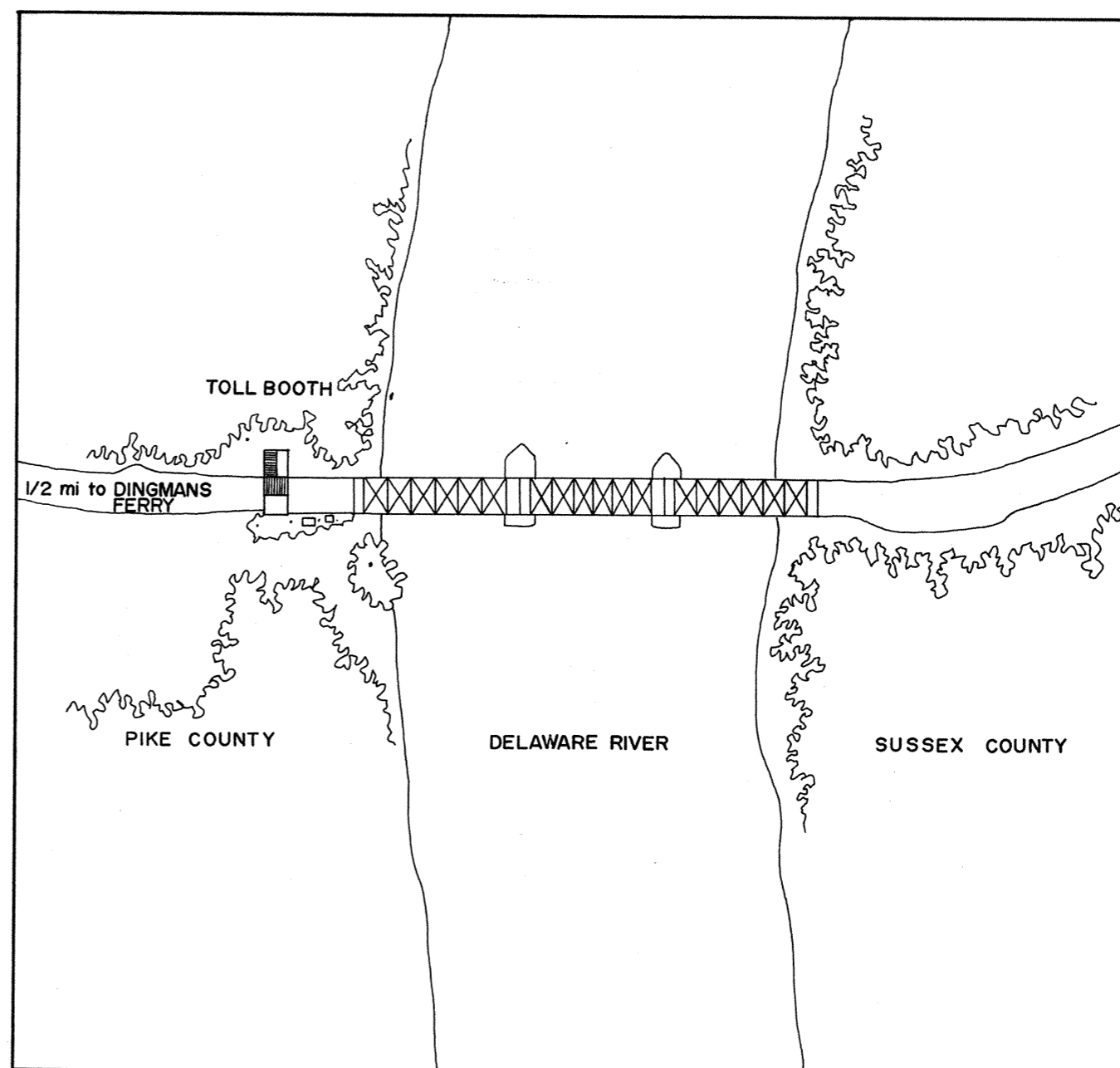


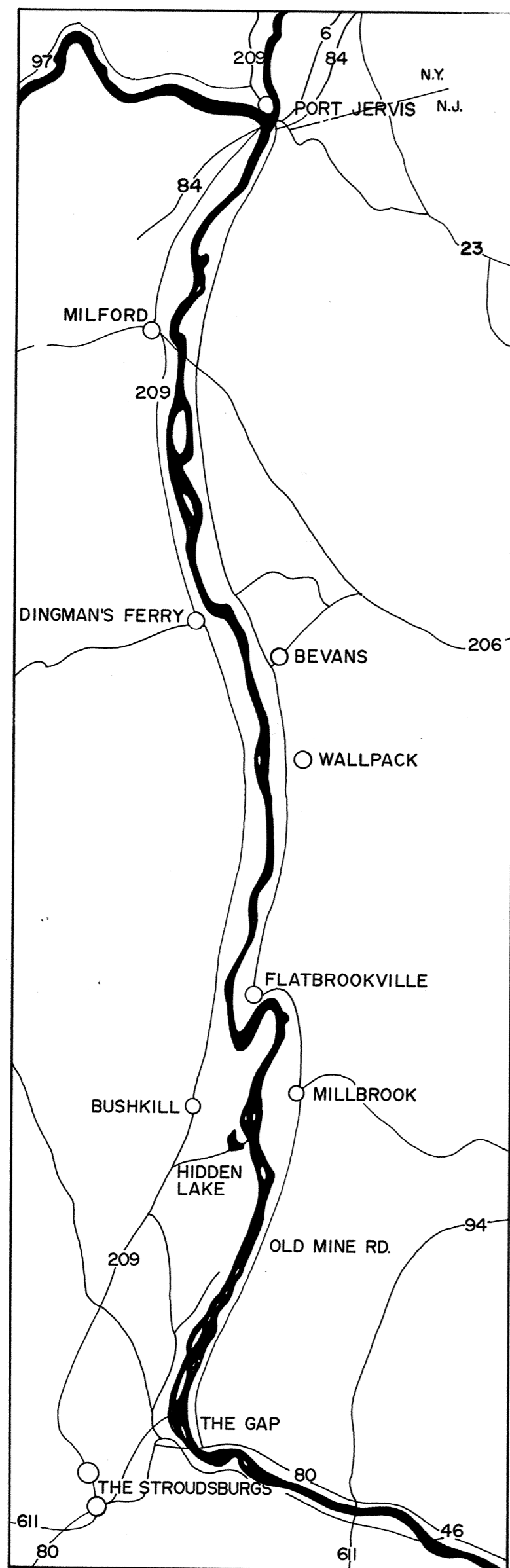
DINGMANS FERRY BRIDGE

THIS TRUSS BRIDGE ERECTED CIRCA 1900, WAS CONSTRUCTED WITH STEEL COLUMNS MADE BY THE PHOENIX BRIDGE COMPANY. THE THREE SPANS WERE PART OF A LARGER BRIDGE, AND WERE SALVAGED AND RECONSTRUCTED BY THE PERKINS BROTHERS OF HORSEHEADS, NEW YORK. THE THIRD BRIDGE TO STAND ON THIS SITE, IT WAS CHARTERED BY THE PENNSYLVANIA AND NEW JERSEY STATE LEGISLATURES AS EARLY AS 1830.



SITE PLAN

SCALE: 1/4" = 150'-0"



DELAWARE RIVER VALLEY
PRIOR TO CONSTRUCTION OF THE
TOCKS ISLAND RESERVOIR
0 1 2 3 4
SCALE IN MILES

THIS PROJECT WAS UNDERTAKEN BY THE HISTORIC AMERICAN BUILDINGS SURVEY IN COOPERATION WITH THE DELAWARE WATER GAP NATIONAL RECREATION AREA, SUPERVISED BY THE NATIONAL PARK SERVICE AND FUNDED BY THE U.S. ARMY CORPS OF ENGINEERS — MEASURED AND DRAWN IN JULY, 1971, UNDER THE DIRECTION OF JAMES C. MASSEY, CHIEF OF H.A.B.S. AND JOHN M. McRAE (UNIVERSITY OF FLORIDA), PROJECT SUPERVISOR, LYNN BEEBE WEAVER (UNIVERSITY OF VIRGINIA), HISTORIAN, AND BY JACK L. FINGLASS (CARNEGIE-MELLON UNIVERSITY), MARTIN J. ROSENBLUM (UNIVERSITY OF ILLINOIS), ARCHITECTS, AND, STEPHEN J. KIRK (UNIVERSITY OF KANSAS), STUDENT ASSISTANT ARCHITECT, AT THE HISTORIC AMERICAN BUILDINGS SURVEY FIELD OFFICE, COLUMBIA, NEW JERSEY, IN THE PROJECT AREA OF THE TOCKS ISLAND RESERVOIR AND THE DELAWARE WATER GAP NATIONAL RECREATION AREA.

MAP CREDITS:
REGIONAL: DEPT. OF INTERIOR
SITE: ON SITE SURVEY

DRAWN BY: MARTIN J. ROSENBLUM, DEL. 1971

DELAWARE WATER GAP SURVEY V
OFFICE OF ARCHEOLOGY AND HISTORIC PRESERVATION
UNDER DIRECTION OF THE NATIONAL PARK SERVICE,
UNITED STATES DEPARTMENT OF THE INTERIOR

DINGMANS FERRY

NAME AND LOCATION OF STRUCTURE
DINGMANS FERRY BRIDGE

PIKE COUNTY

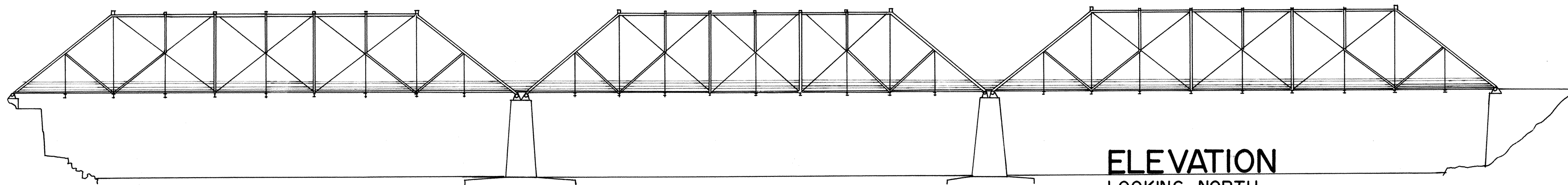
PENNSYLVANIA

SURVEY NO.

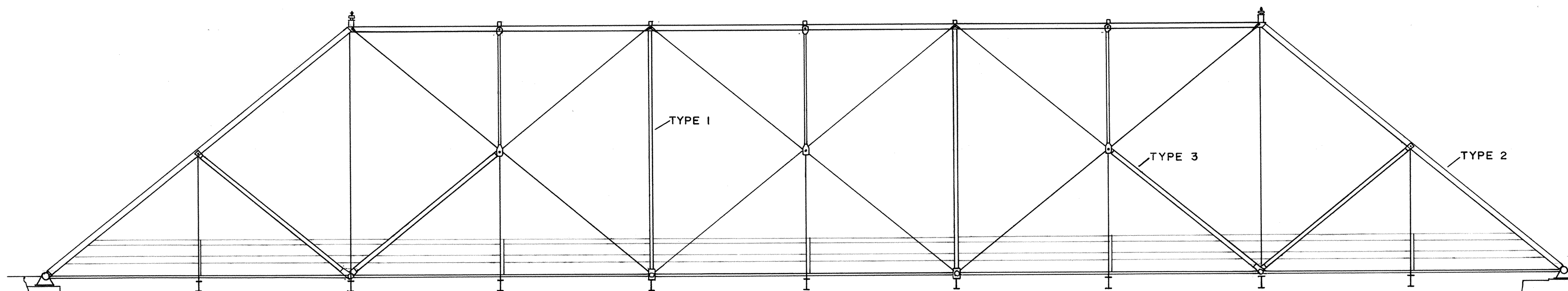
PA-15

HISTORIC AMERICAN
ENGINEERING RECORD
SHEET 1 OF 3 SHEETS

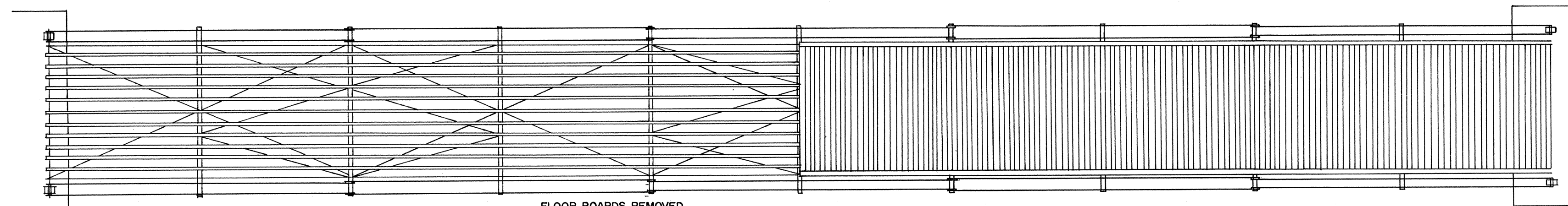
LIBRARY OF CONGRESS
INDEX NUMBER



ELEVATION
 LOOKING NORTH
 SCALE: 1" = 30'-0"



ELEVATION
 SINGLE BAY
 SCALE: 3/32" = 1'-0"



FLOOR BOARDS REMOVED
 TO DISPLAY SUPERSTRUCTURE

PLAN
 SCALE: 3/32" = 1'-0"

DRAWN BY: MARTIN J. ROSENBLUM, DEL. 1971

DELAWARE WATER GAP SURVEY V
 OFFICE OF ARCHEOLOGY AND HISTORIC PRESERVATION
 UNDER DIRECTION OF THE NATIONAL PARK SERVICE,
 UNITED STATES DEPARTMENT OF THE INTERIOR

DINGMANS FERRY

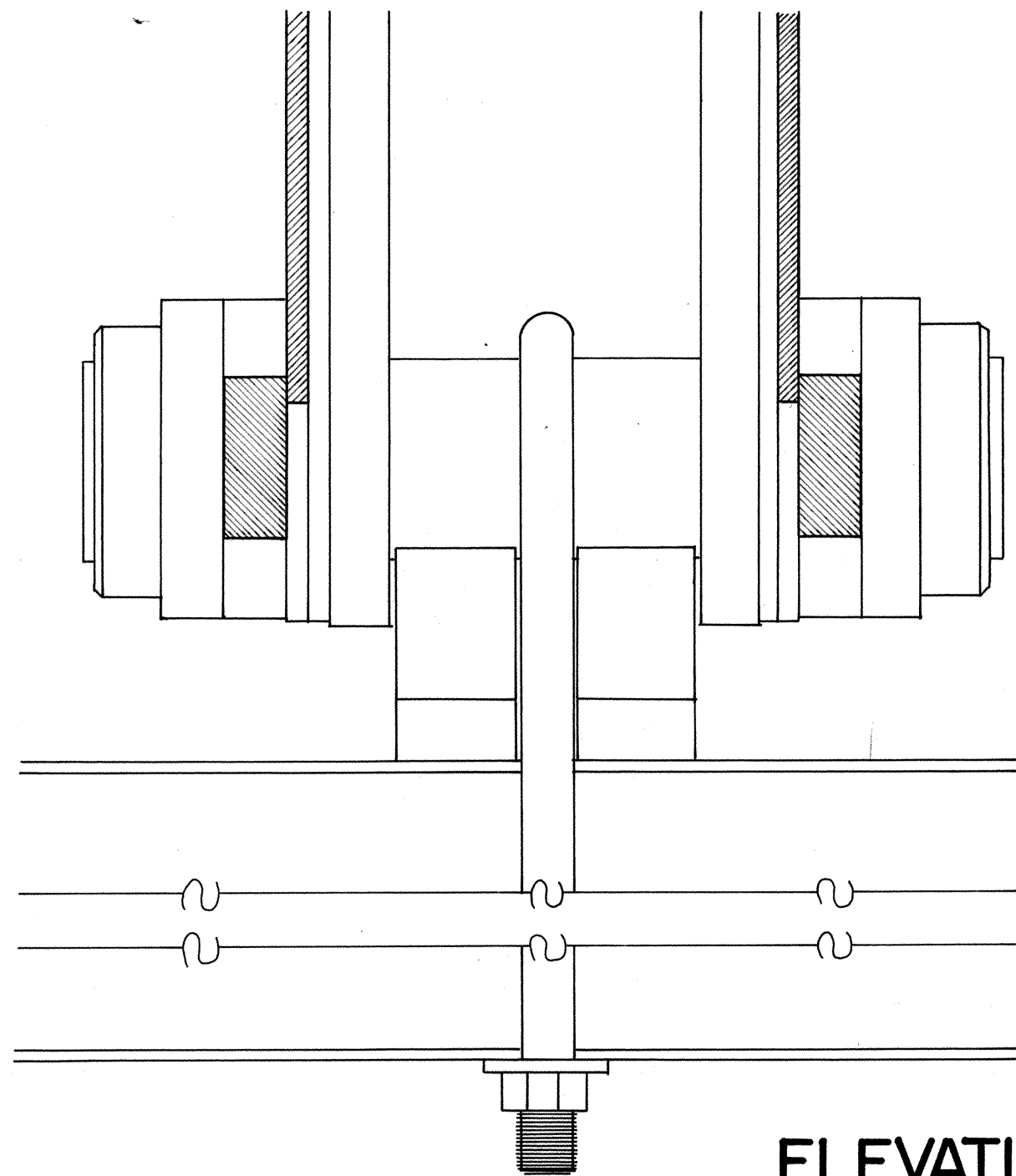
NAME AND LOCATION OF STRUCTURE
DINGMANS FERRY BRIDGE
 PIKE COUNTY

PENNSYLVANIA

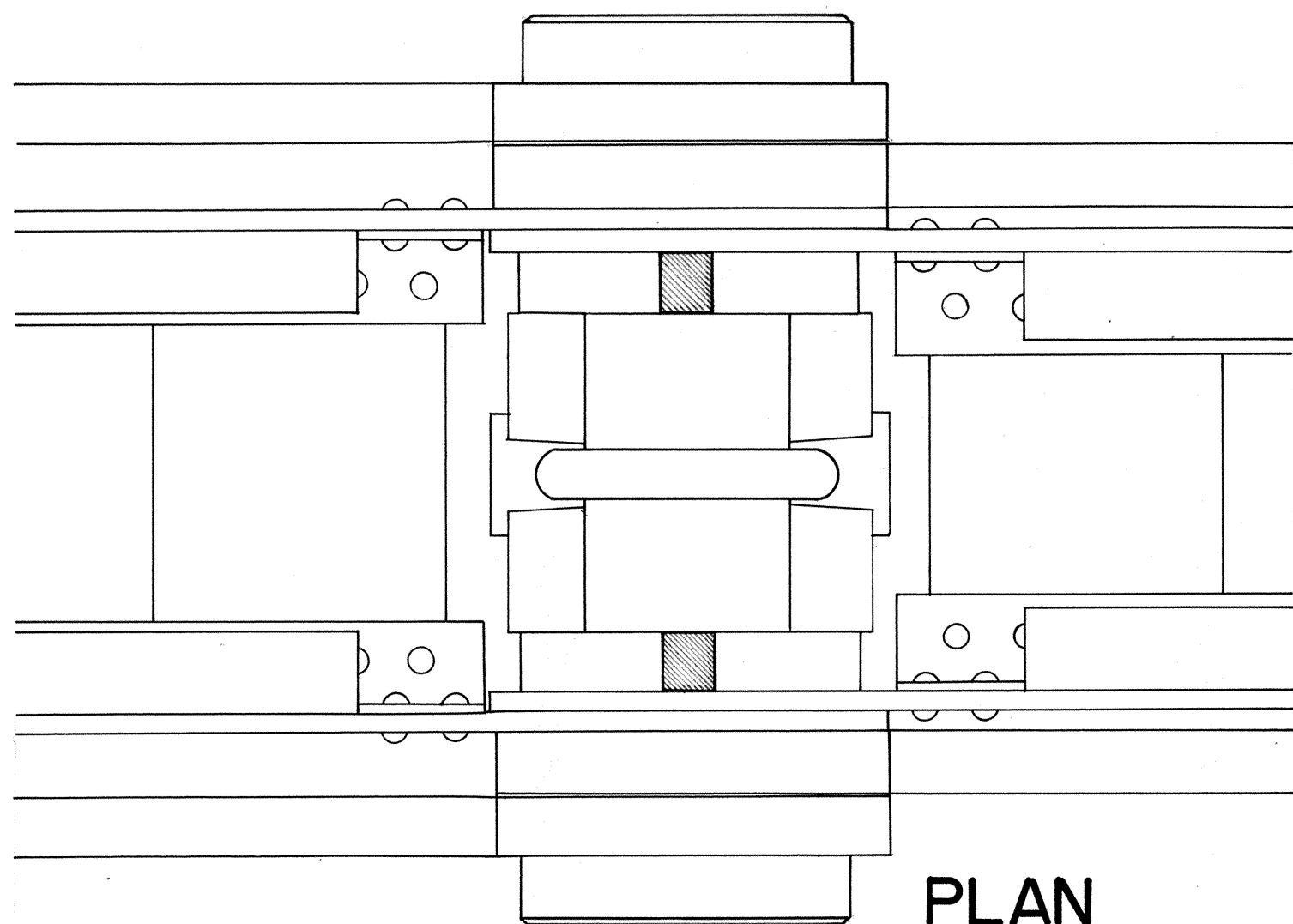
SURVEY NO.
 PA-15

HISTORIC AMERICAN
 ENGINEERING RECORD
 SHEET 2 OF 3 SHEETS

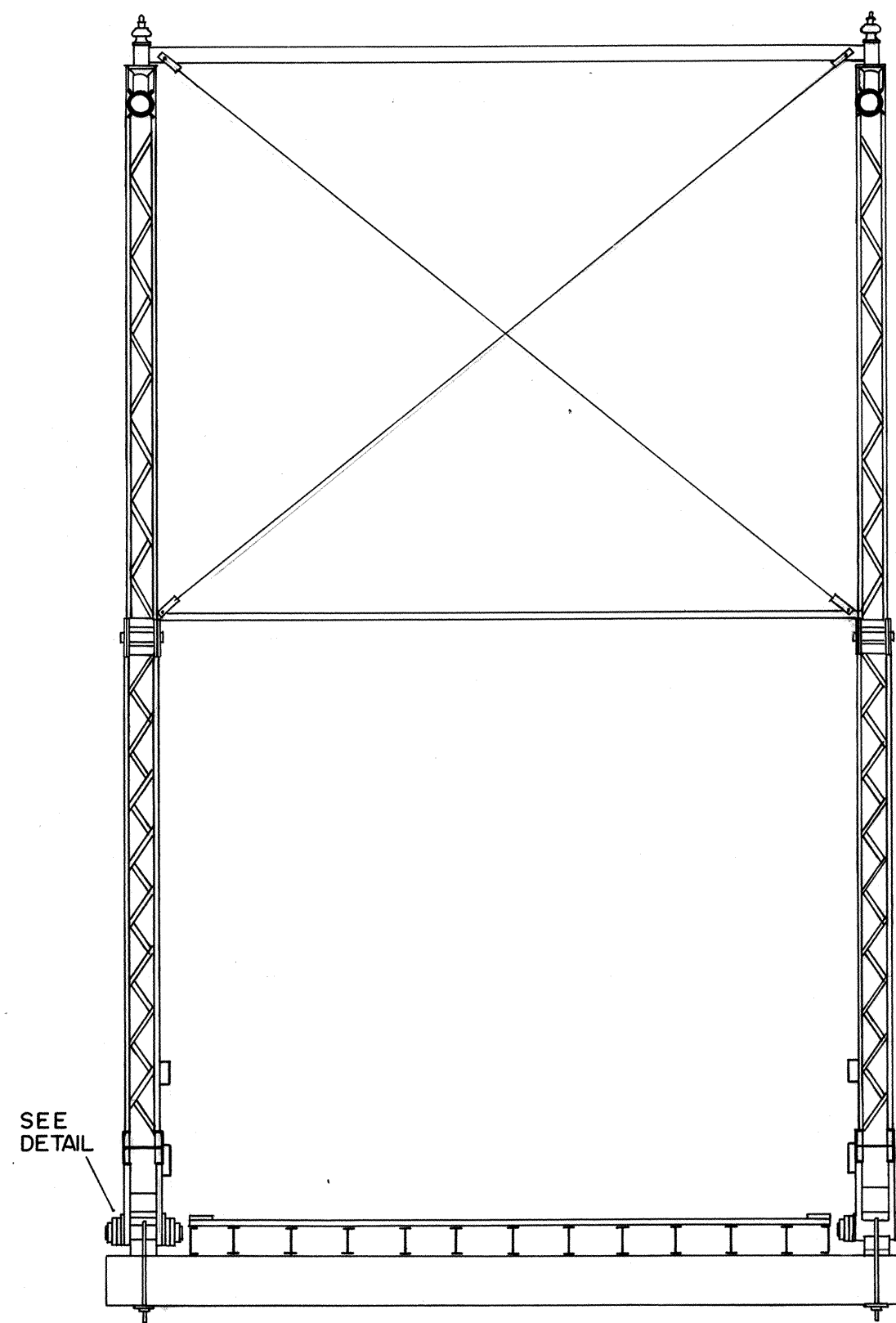
LIBRARY OF CONGRESS
 INDEX NUMBER



ELEVATION
 DETAIL PIN CONNECTION
 SCALE: 3"=1'-0"

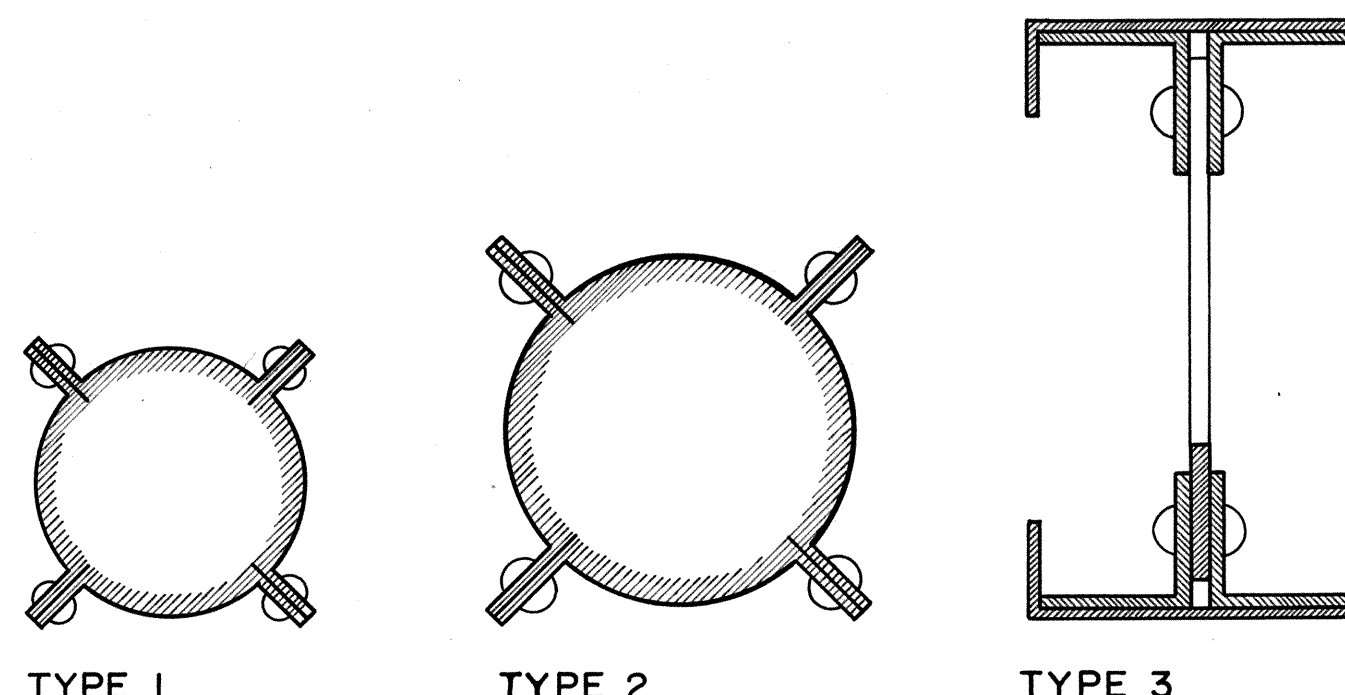


PLAN
 DETAIL PIN CONNECTION
 SCALE: 3"=1'-0"



SECTION
 SCALE: 1/4"=1'-0"

SEE
 DETAIL



TYPE 1

TYPE 2

TYPE 3

TYPICAL FABRICATED COMPONENTS
 SCALE: 3"=1'-0"

DRAWN BY: MARTIN J. ROSENBLUM, DEL. 1971

DELAWARE WATER GAP SURVEY V
 OFFICE OF ARCHEOLOGY AND HISTORIC PRESERVATION
 UNDER DIRECTION OF THE NATIONAL PARK SERVICE,
 UNITED STATES DEPARTMENT OF THE INTERIOR

DINGMANS FERRY

NAME AND LOCATION OF STRUCTURE
DINGMANS FERRY BRIDGE
 PIKE COUNTY

PENNSYLVANIA

SURVEY NO.
 PA-15

HISTORIC AMERICAN
 ENGINEERING RECORD
 SHEET 3 OF 3 SHEETS

LIBRARY OF CONGRESS
 INDEX NUMBER