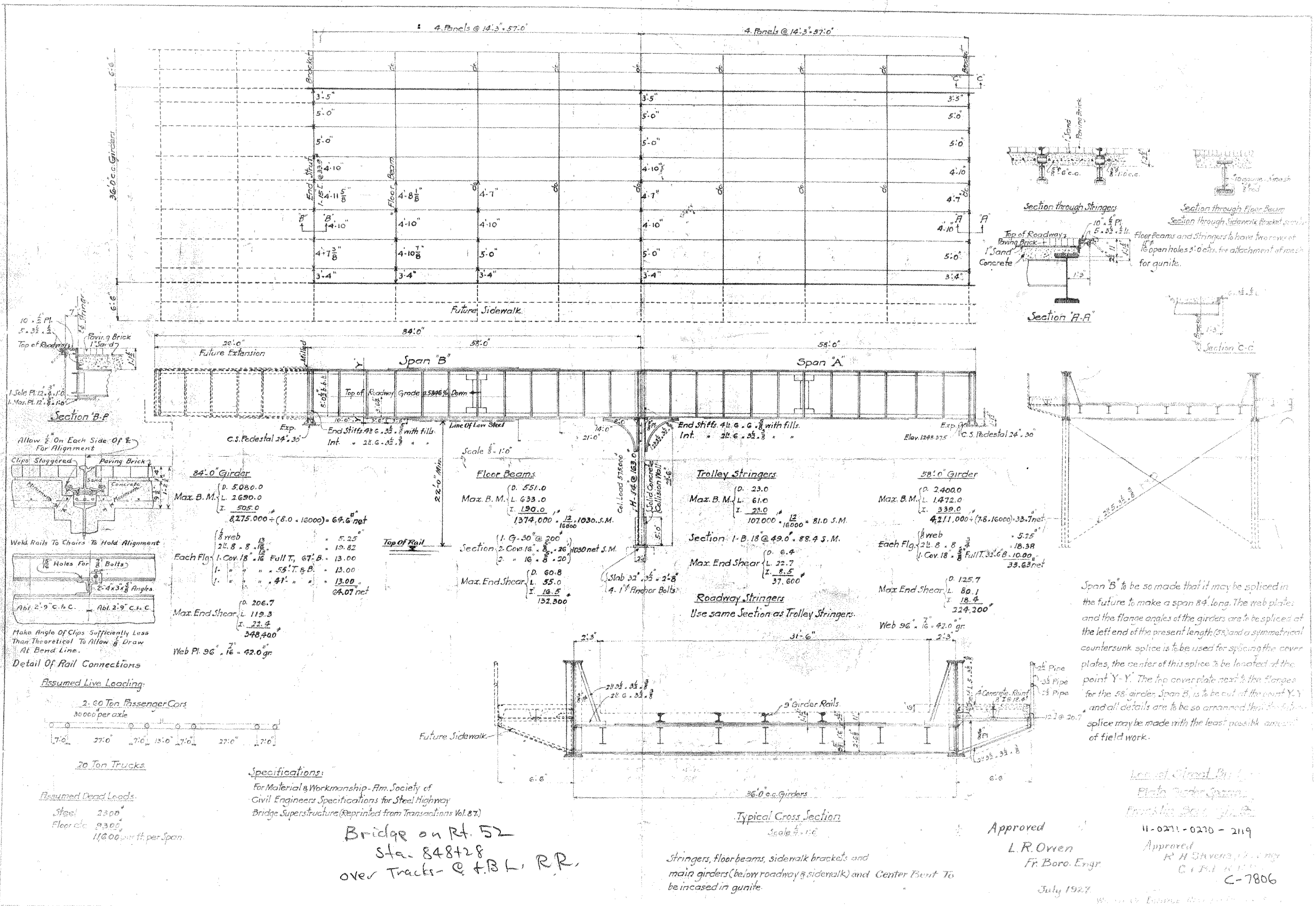
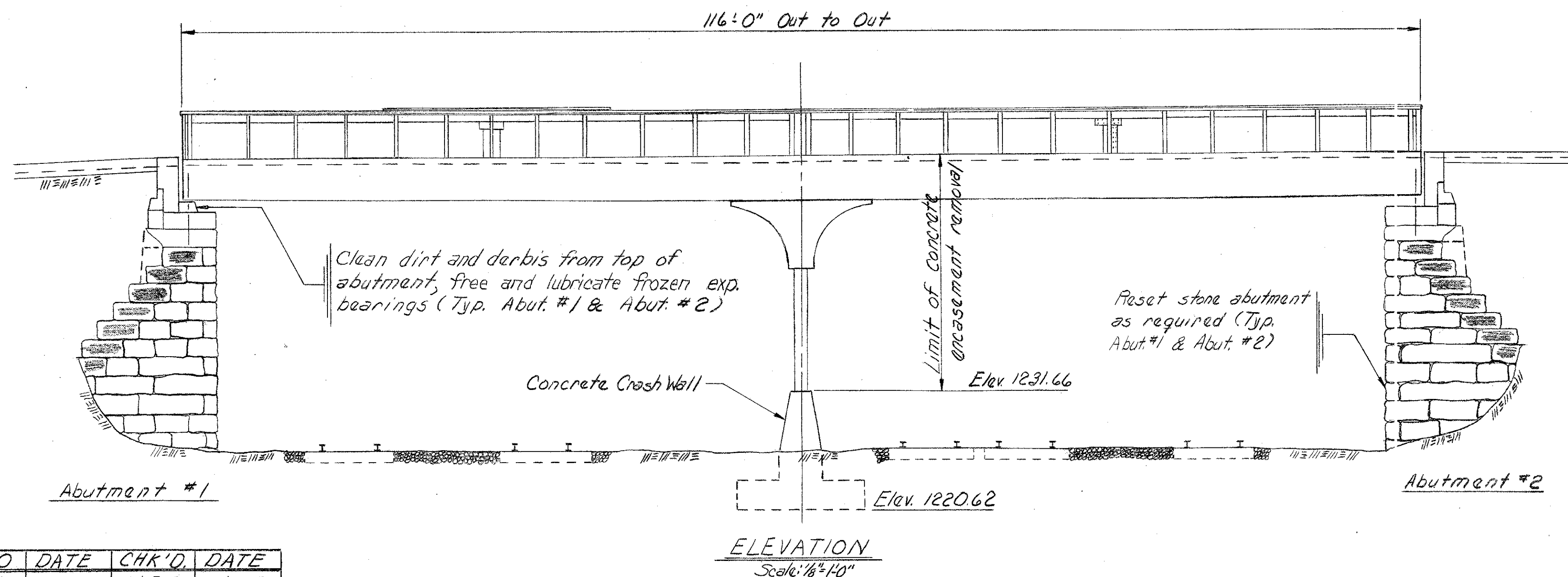
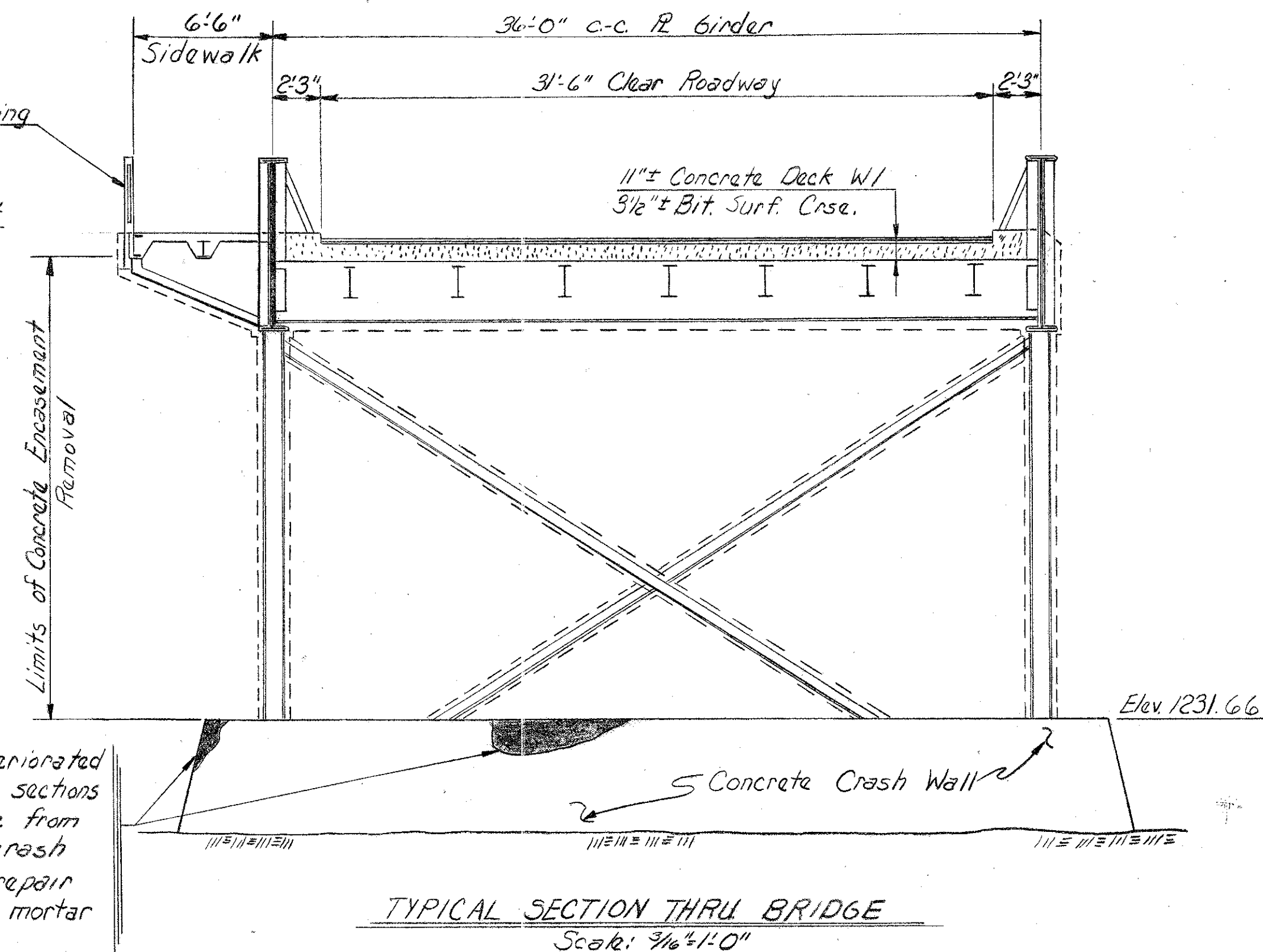
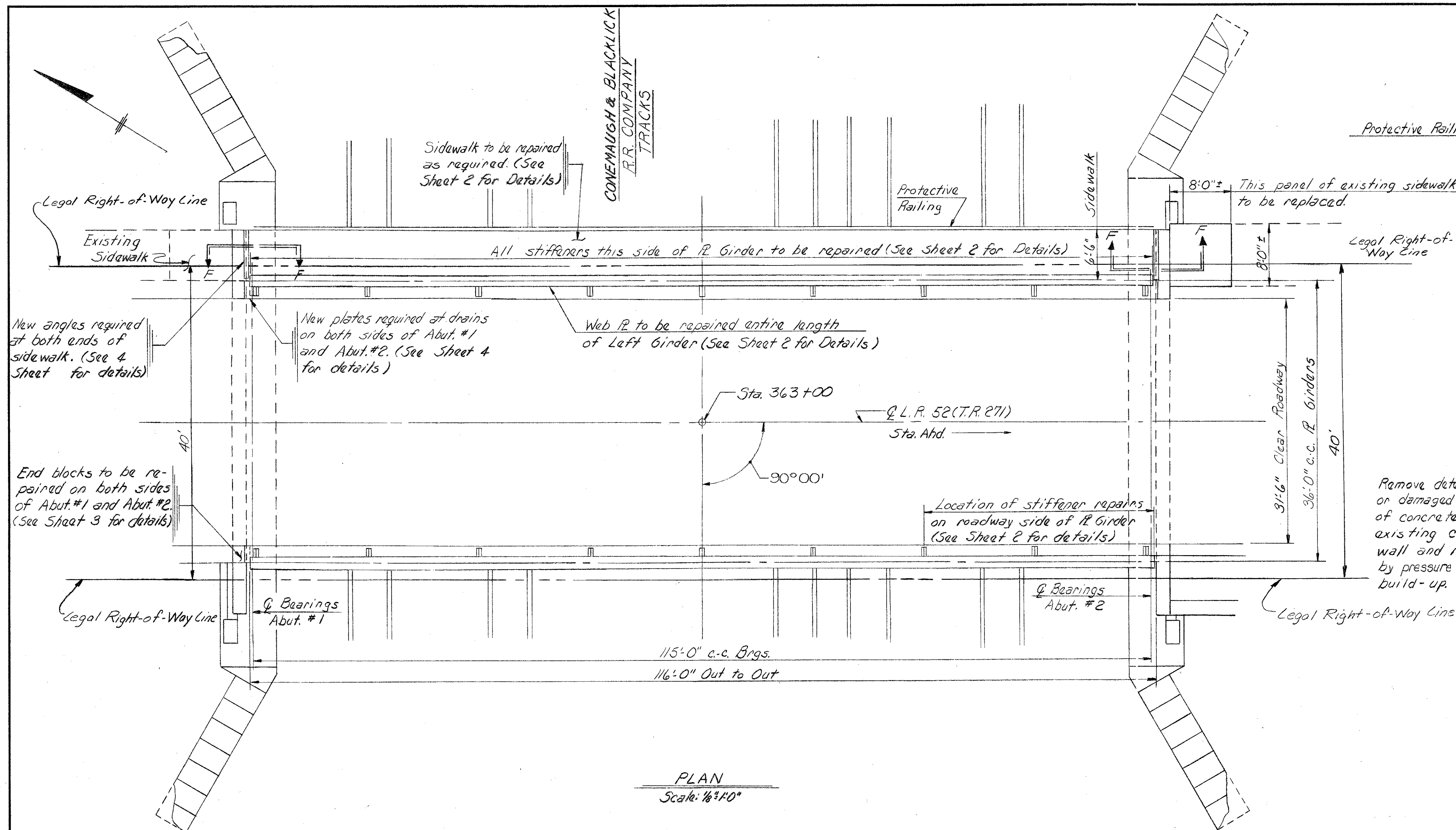


Disc No 2 of 3





- GENERAL NOTES**
- ▶ Materials and workmanship shall be in accordance with Specification Forms 408/73 and 409/73.
 - ▶ Commercial type sandblasting shall be required for all steel after removal of concrete encasement.
 - ▶ Three coats of paint required on all exposed steel. Use the following paints: 1. Primer - Color #1 R.P., 2. Intermediate - Sand stone (Color #8), 3. Final (Grey Color #15).
 - ▶ Unless otherwise specified, structural carbon steel shall be used, and shall conform to the Specifications for Structural Steel, AASHTO M160 (ASTM A36).
 - ▶ High strength bolts, nuts and washers shall conform to the requirements of the Specification for High Strength Carbon Steel Bolts for Structural joints, AASHTO M164 (ASTM A325).
 - ▶ See Sheet 4 for Summary of Quantities.

Mark	Description	By	Chk'd.	App'd.	Date
REVISIONS					

Commonwealth of Pennsylvania
DEPARTMENT OF TRANSPORTATION
BUREAU OF DESIGN
REPAIR DRAWINGS-LOCUST STREET BRIDGE
CAMBRIA COUNTY
L.R. 52 STA. 363+00
2-SPAN THRU PLATE GIRDER BRIDGE
OVER CONEMAUGH & BLACKLICK R.R.
GENERAL PLAN

THREADED INSERT ANCHOR ASSEMBLY	BC-334	6-1-72
DESCRIPTION	DWG.	DATE
SUPPLEMENTAL DRAWINGS		

APPROVED 2-27-75
Charles J. Allison
Dist. BRIDGE ENGINEER

SHEET 1 OF 4
S-11750

DISTRICT	9-0	DATE	CHK'D.	DATE
Designed	W.J.C.	6-73	W.E.B.	6-73
Drawn	W.J.C.	6-73	W.E.B.	6-73
Traced	G.W.N.	7-73	W.J.C.	7-73

Apply 1" FJ-1 wearing course to the sidewalk after all repairs have been made. Slope surface from web plate out @ 1/4"/ft.

Limit of sidewalk removal

Repair sidewalk as required with Epoxy resin mortar. Use bonding agent with mortar.

Protective Railing

Remove Concrete Encasement

New plates required to strengthen stiffeners.

STIFFENER REPAIR DETAIL - MAIN LEFT GIRDER
Scale: 1/2" = 1'-0"

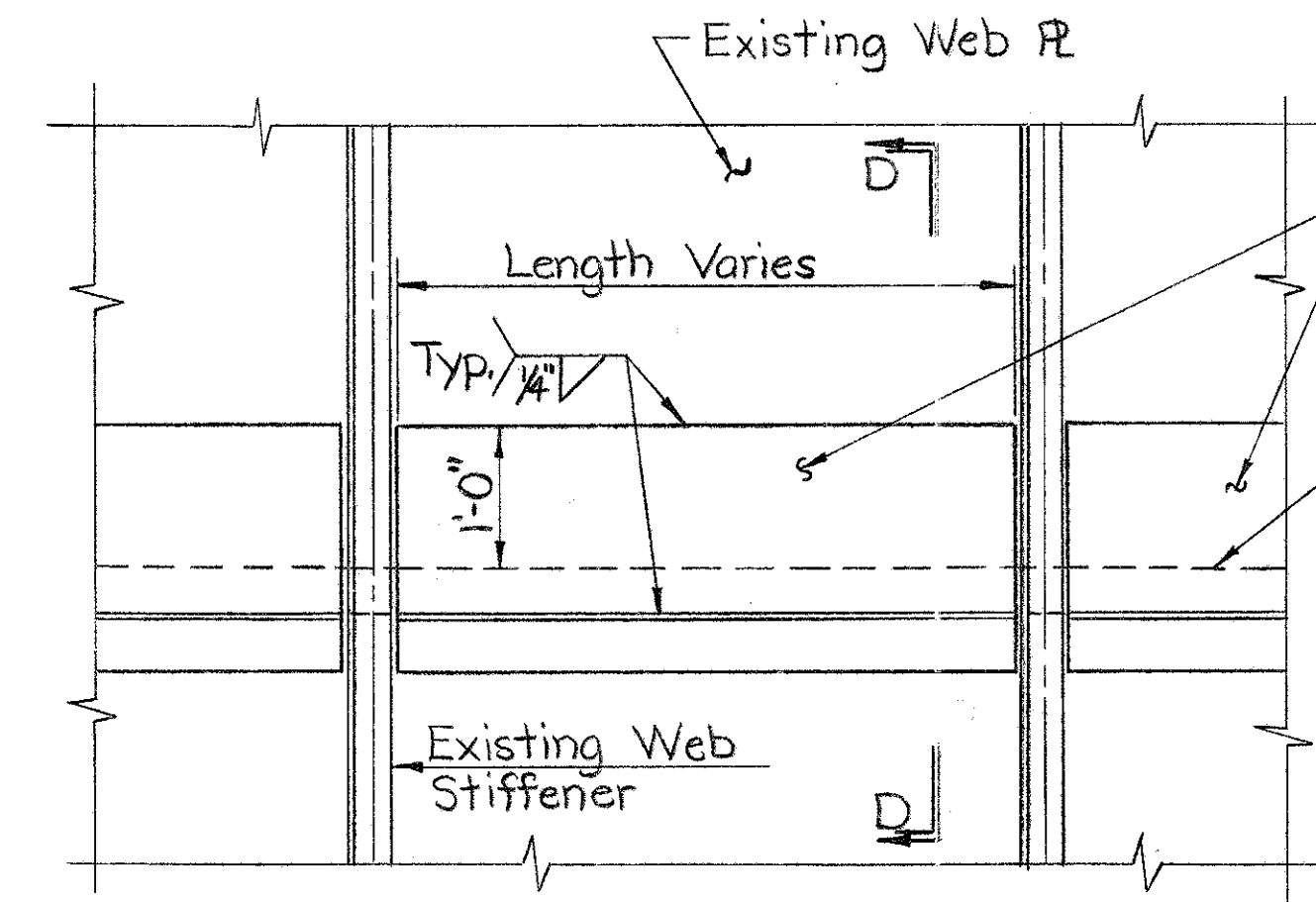
Remove damaged or disintegrated sections of concrete from existing curb. Repair curb with H.E.S. Cement Concrete w/bonding agent.

Remove damaged or disintegrated sections of concrete from existing curb. Repair curb with H.E.S. Cement Concrete w/bonding agent, after repairs have been made to web stiffeners.

Top of roadway

Limit of roadway removal

STIFFENER REPAIR DETAIL - MAIN RIGHT GIRDER
Scale: 1/2" = 1'-0"



WEB PLATE REPAIR DETAIL - MAIN LEFT GIRDER
Scale: 3/4" = 1'-0"

PL 3/8 x 1-4 required to strengthen existing web PL. New PL's needed on entire left side of left main girder. See Sheet 4 for sizes and number of plates required.

Top of existing sidewalk.

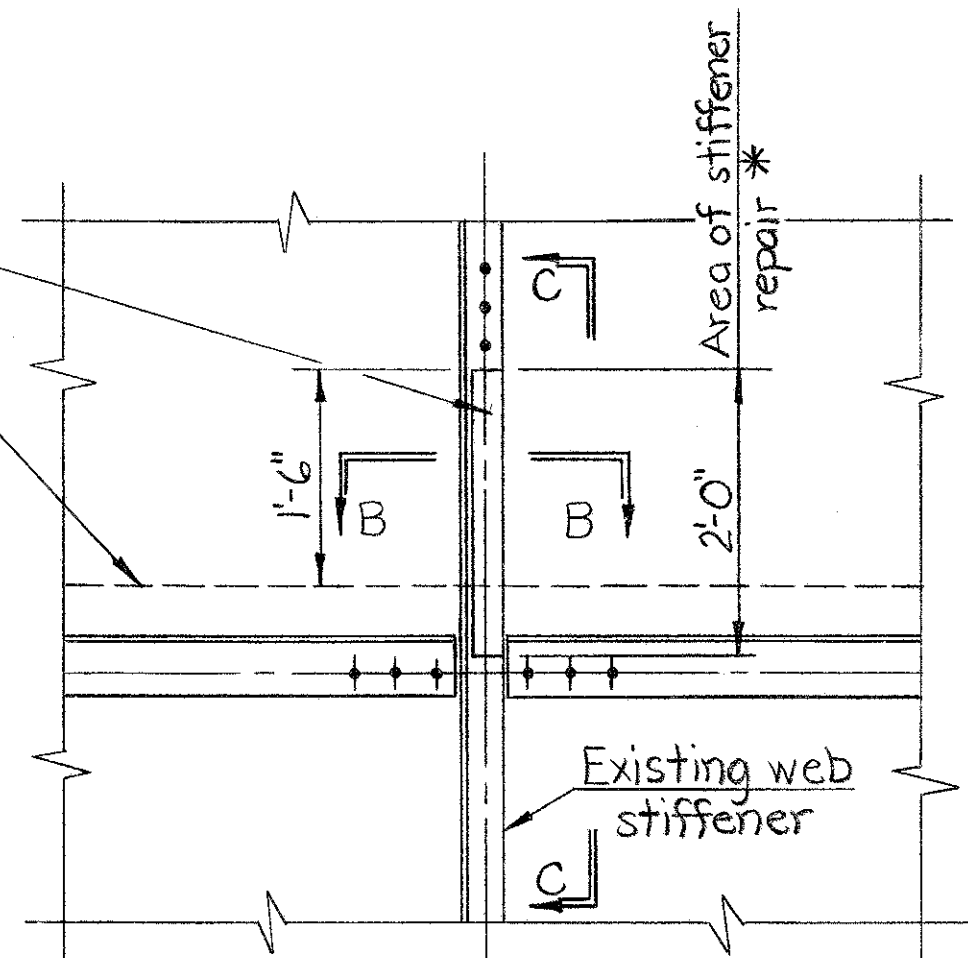
NOTES

- ▶ Remove portion of sidewalk or roadway as required to make repairs to stiffeners or web PL. New portion of sidewalk or roadway shall be made of H.E.S. Cement Concrete.
- ▶ Before installation of new plates, the contact surfaces between new and existing members shall be cleaned by sandblasting and the whole assembly cleaned and painted after plating. The contact surfaces shall be primed and painted with special care before plating, using additional coats of paint as judgement dictates.
- ▶ 5/16" Ø Holes to be cut, or drilled, and reamed if necessary, on the new plates. These holes shall match the spacing of the rivet holes on the existing stiffeners.
- ▶ See Sheet 3 for Reinforcement Bar Schedule.

New plates required to strengthen existing stiffener.

Top of existing sidewalk or existing roadway

* All existing rivets in this area to be removed and replaced with H.S. Bolts.



SECTION A-A
Scale: 3/4" = 1'-0"

Existing Rivets

Grind to fit fillet of existing angle.

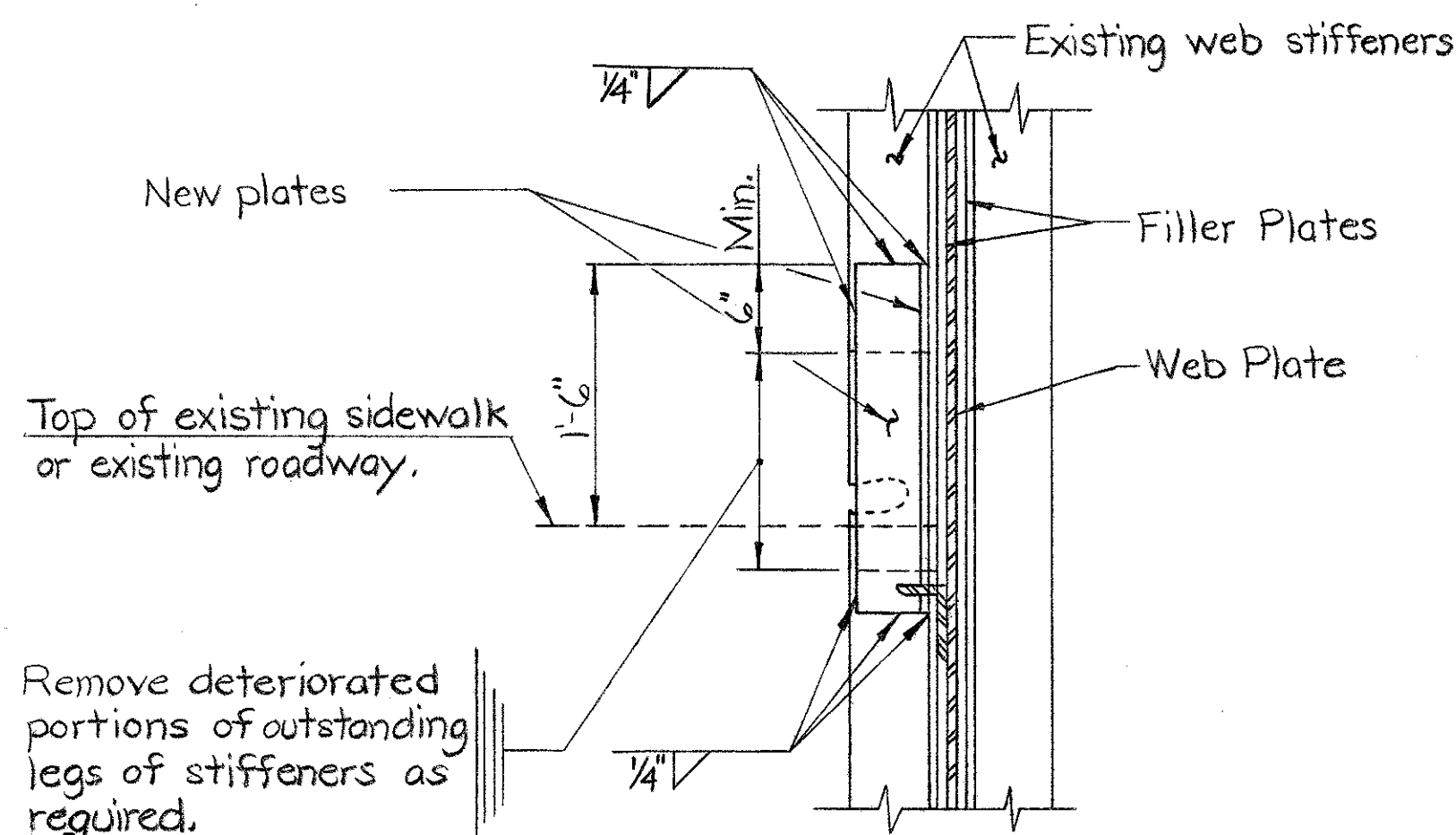
Existing web stiffeners

PL 3/8 x 5" x 2'-0" See Sheet 4 for number of plates required. (Typ. all stiffeners)

SECTION B-B
Scale: 1/2" = 1'-0"

PL 3/8 x 3" x 2'-0" except at ϕ of bridge, then use 3/8 x 5" x 2'-0". See Sheet 4 for number of plates required.

Top of existing sidewalk or existing roadway.



SECTION C-C
Scale: 1" = 1'-0"

Top of existing sidewalk

PL 3/8 x 1-4"

SECTION D-D
Scale: 1" = 1'-0"

ϕ PL Girder

3'-3" \pm

This section of sidewalk is to be removed and replaced.

This section of sidewalk is to be repaired and remain in place.

Web Plate

1" FJ-1 Wearing Course

1/2" Cl.

4" Sidewalk

Existing bar is to be salvaged and used in new section of sidewalk.

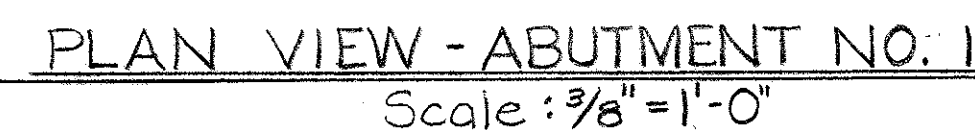
S301 bars @ 12" c.c.

SIDEWALK REPAIR DETAIL
Scale: 3/4" = 1'-0"

DISTRICT	9-0	Date	Chk'd.	Date
Designed	W.J.C.	6-73	W.E.B.	6-73
Drawn	W.J.C.	6-73	W.E.B.	7-73
Traced	D.D.M.	7-73	W.J.C.	8-73

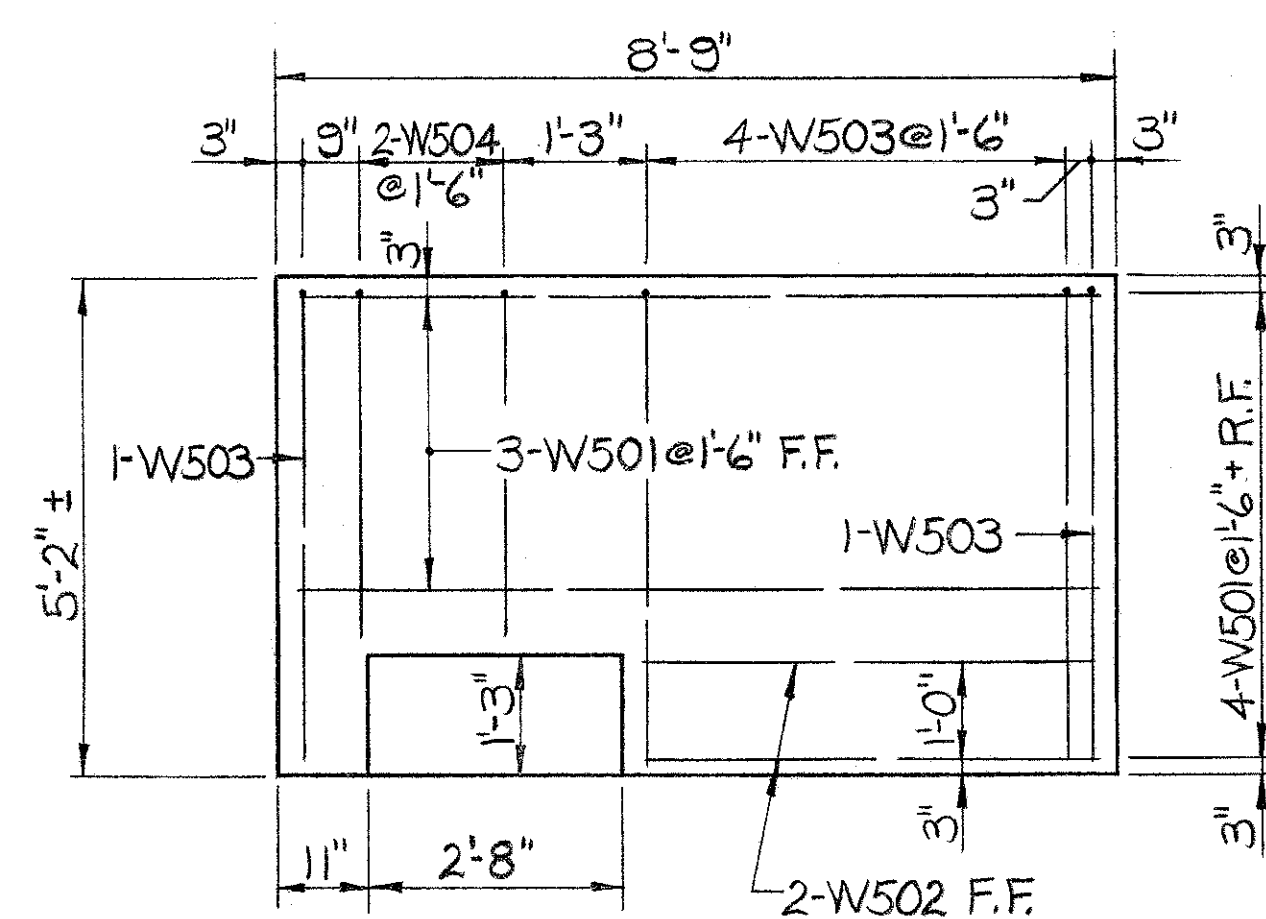
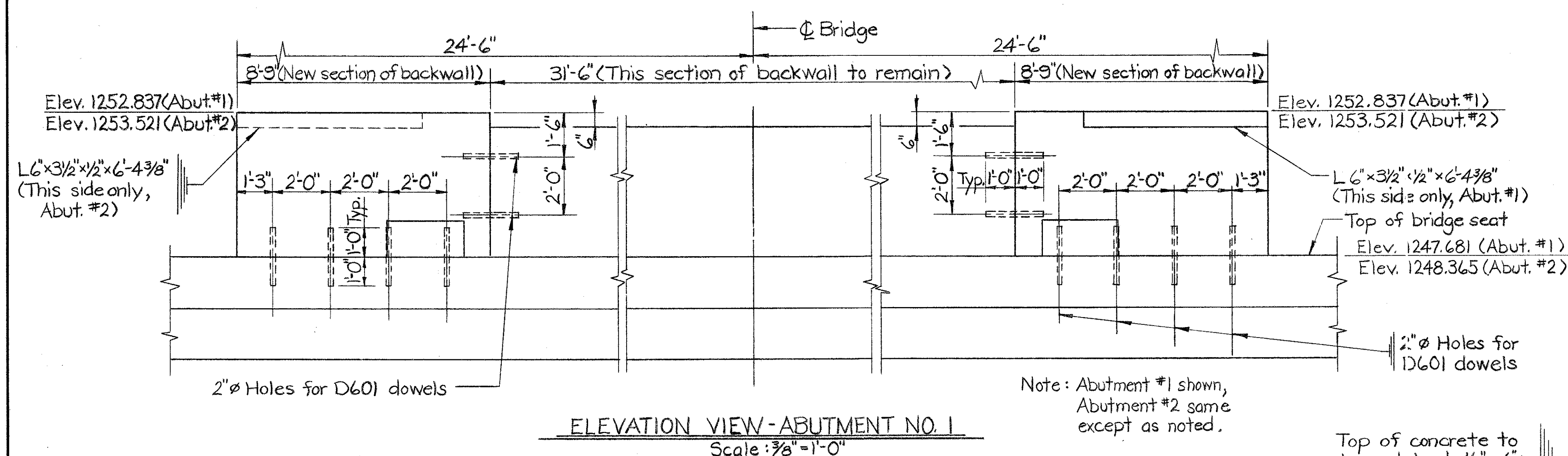
Mark	Description	By	Chk'd.	App'd.	Date
REVISIONS					

Commonwealth of Pennsylvania DEPARTMENT OF TRANSPORTATION BUREAU OF DESIGN REPAIR DRAWINGS-LOCUST STREET BRIDGE CAMBRIA COUNTY L.R. 52 STA. 363+00 2-SPAN THRU PLATE GIRDER BRIDGE OVER CONEMAUGH & BLACKLICK R.R. STIFFENER & WEB PLATE DETAILS					
APPROVED 2-27-75 Charles J. Allison Dist BRIDGE ENGINEER					SHEET 2 OF 4
					S-11750

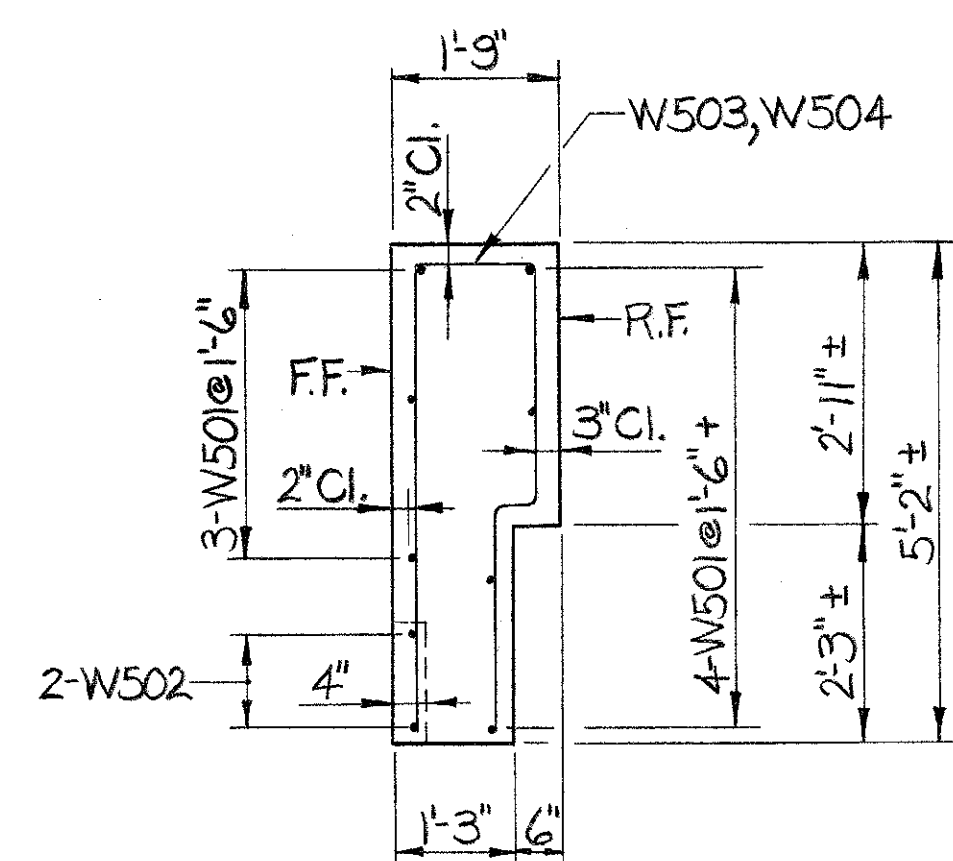


Note: All bar dimensions are out to out.

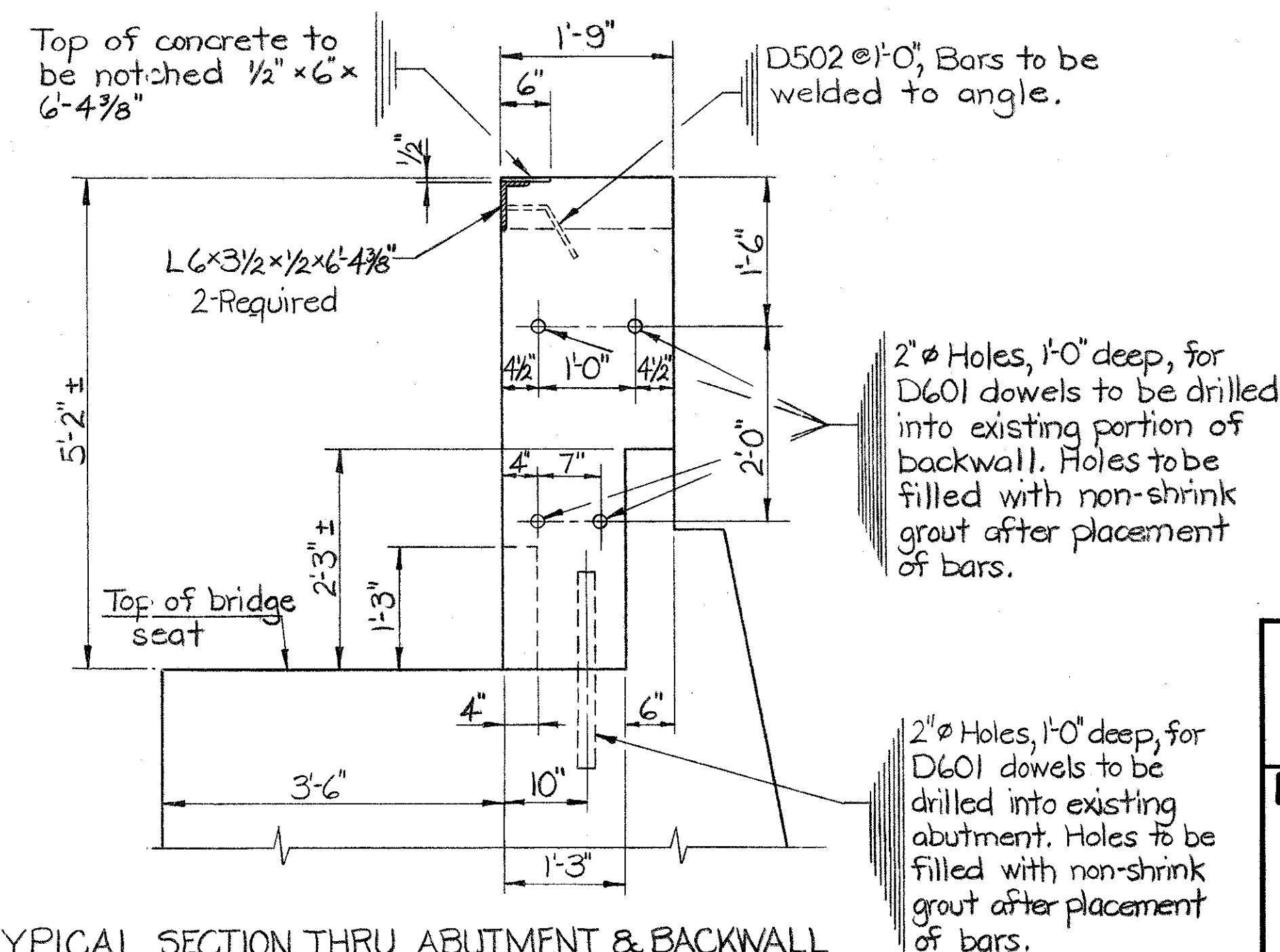
- ### NOTES
- ▶ See Sheet 1 for General Notes.
 - ▶ F.F. denotes Front Face, R.F. denotes Rear Face
 - ▶ After removal of existing backwall, the original concrete surface shall be thoroughly cleaned of all loose and foreign material, scrubbed with wire brushes and clean water.
 - ▶ See Sheet 2 for placement of S301 bars.



TYPICAL BACKWALL REINFORCING
Scale: $\frac{1}{2}" = 1'-0"$



TYPICAL SECTION
THRU BACKWALL
Scale: $\frac{1}{2}" = 1'-0"$



TYPICAL SECTION THRU ABUTMENT & BACKWALL
Scale: $\frac{3}{4}" = 1'-0"$

Mark	Description	By	Chk'd.	App'd.	Date
REVISIONS					

Commonwealth of Pennsylvania
DEPARTMENT OF TRANSPORTATION
BUREAU OF DESIGN

**REPAIR DRAWINGS-LOCUST STREET BRIDGE
CAMBRIA COUNTY
L.R. 52 STA. 363+00
2-SPAN THRU PLATE GIRDER BRIDGE
OVER CONEMAUGH & BLACKLICK R.R.
BACKWALL DETAILS**

APPROVED 2-27-75
Charles J. Allison
Dist BRIDGE ENGINEER

SHEET 3 OF 4

S-11750

DISTRICT 9-0	Date	Chk'd	Date
Designed W.J.C.	6-73	W.E.B.	7-73
Drawn W.J.C.	6-73	W.E.B.	7-73
Traced D.D.M.	7-73	W.J.C.	8-73

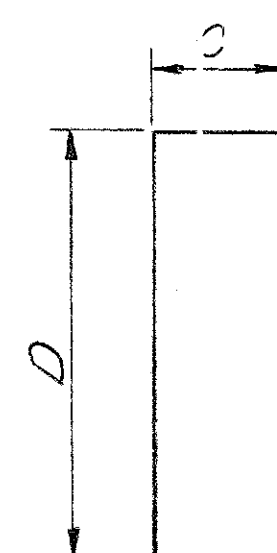
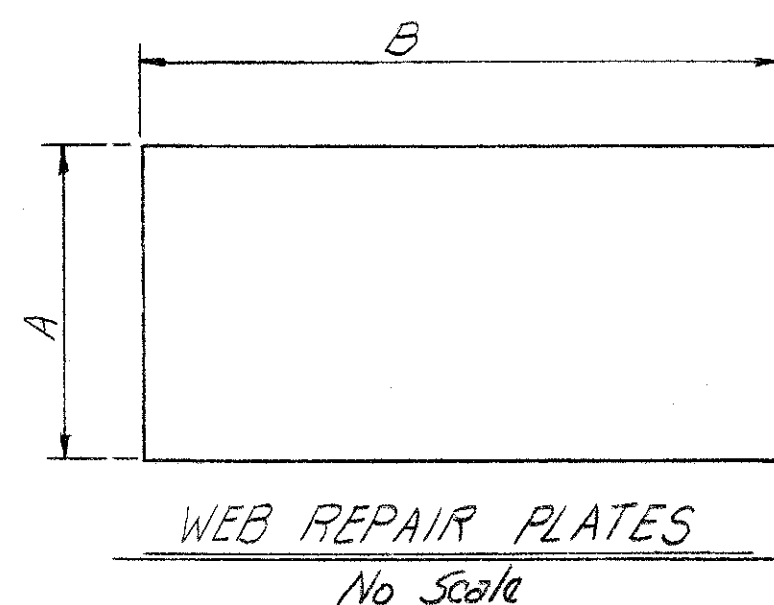
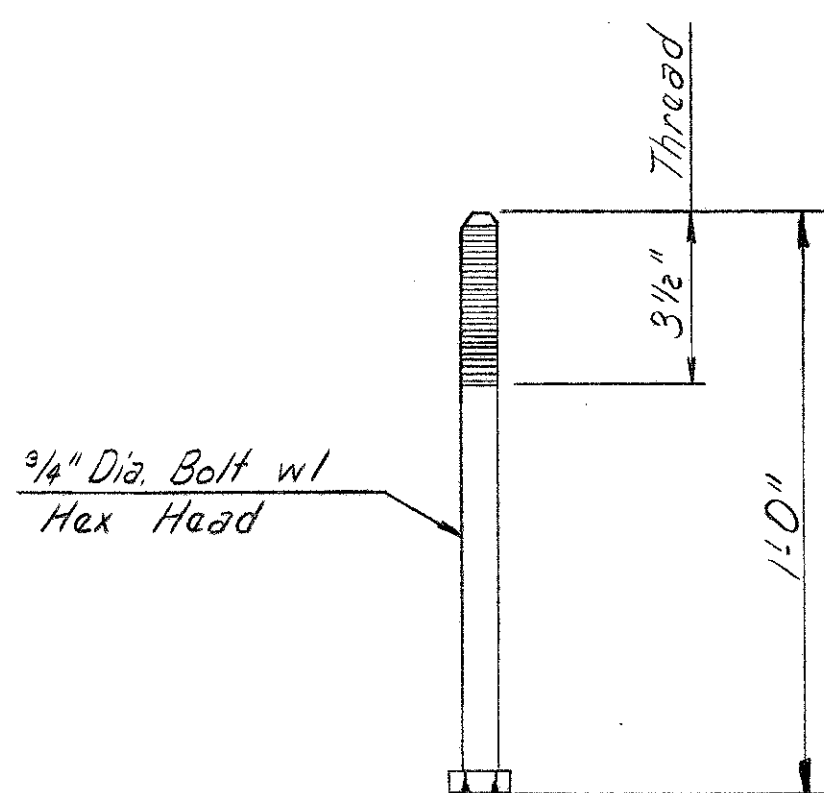
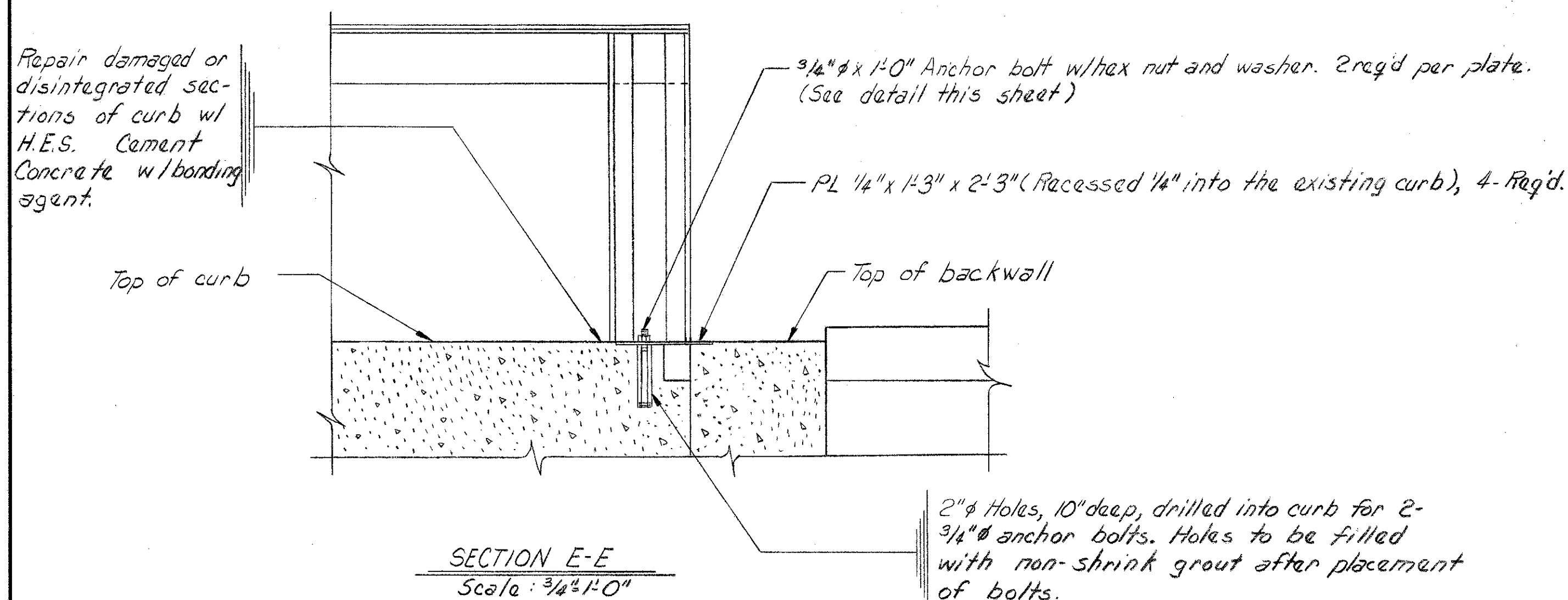
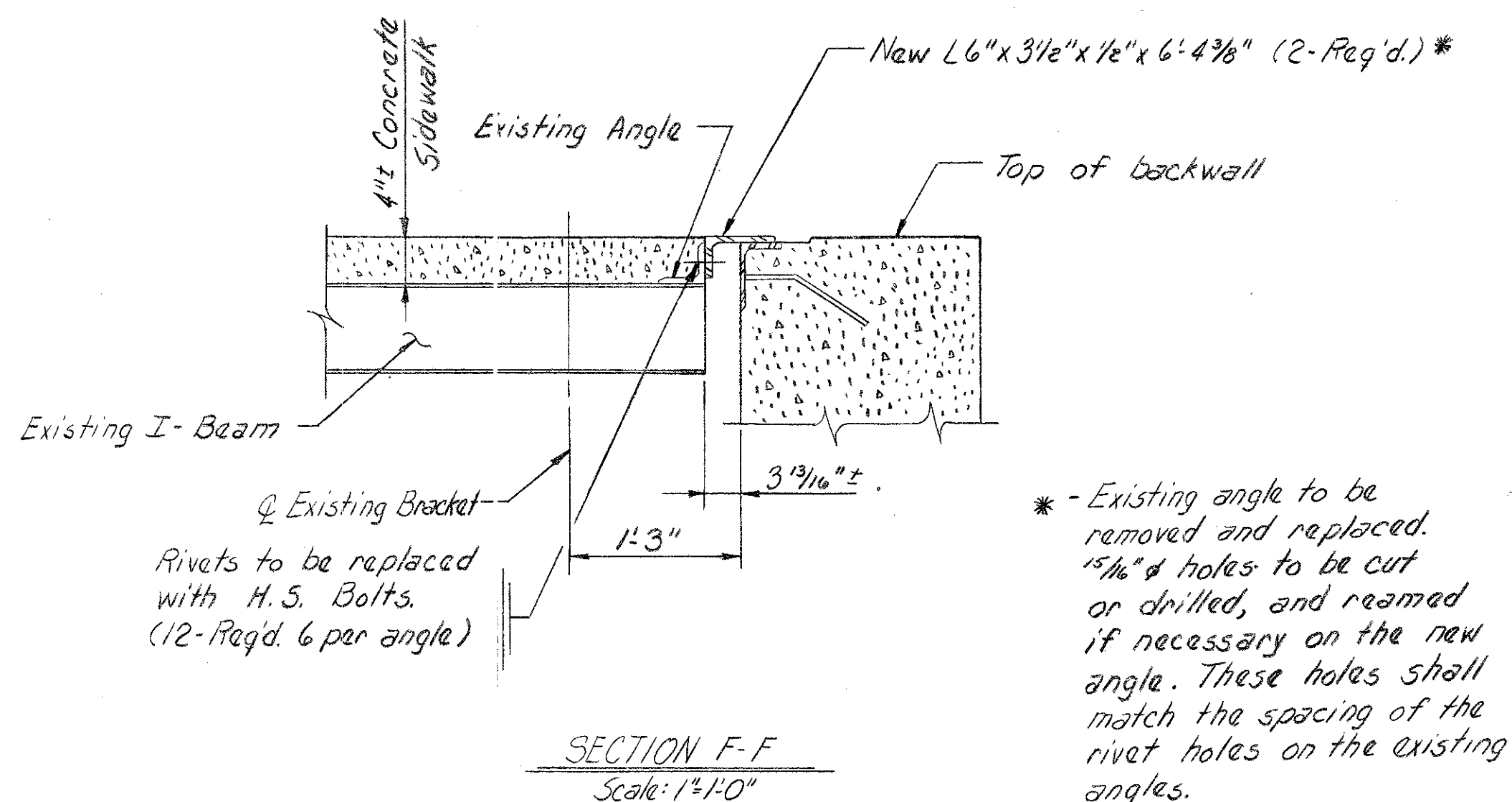
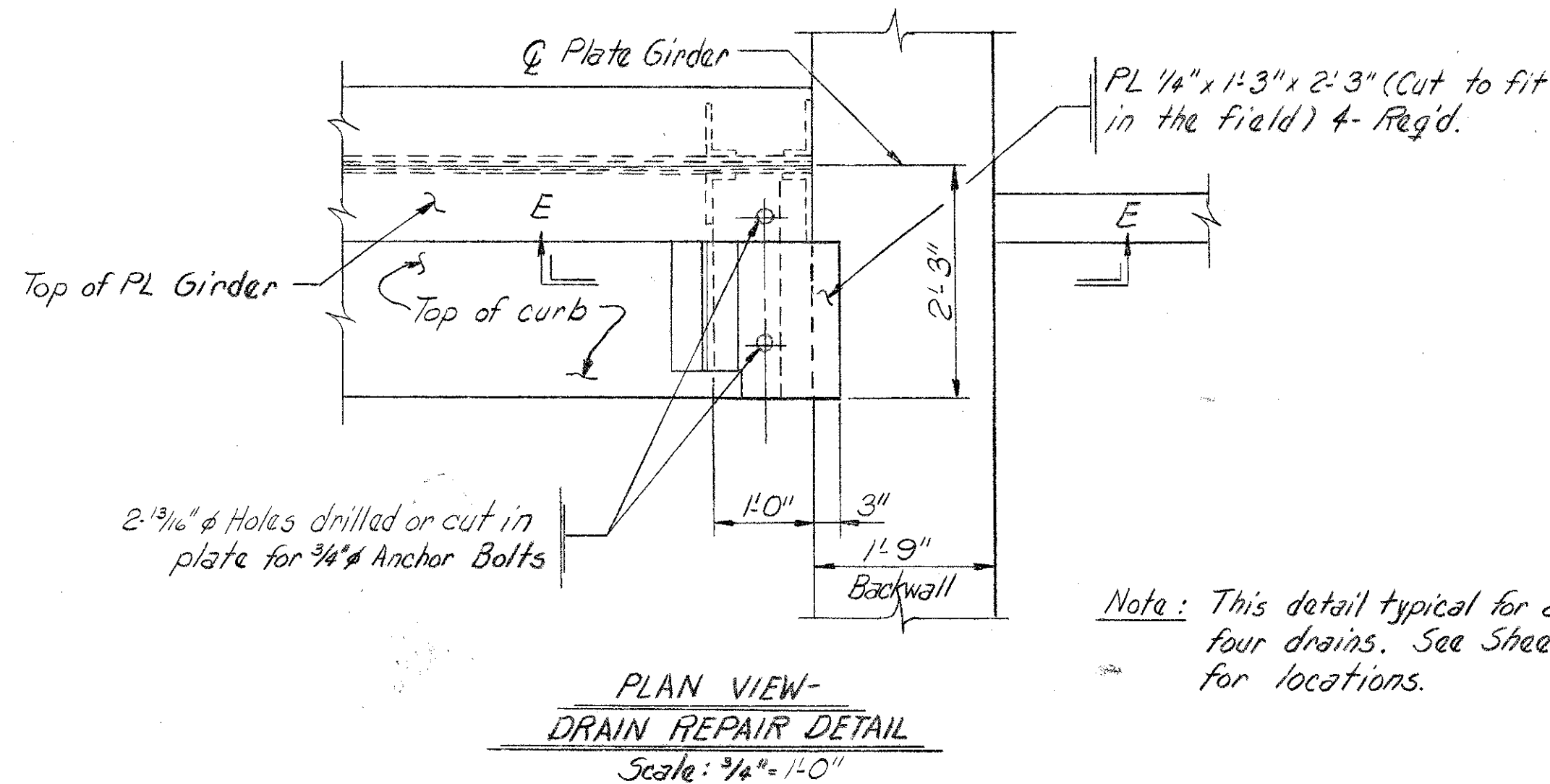


PLATE DIMENSION TABLE				
Thickness	A	B	C	D
3/8"	1'-4"	3'-8 3/4"	—	—
3/8"	1'-4"	3'-10 3/4"	—	—
3/8"	1'-4"	4'-4"	—	—
3/8"	1'-4"	4'-10"	—	—
3/8"	—	—	3"	2'-0"
3/8"	—	—	5"	2'-0"

LIST OF REQUIRED ITEMS	
Item	No. Reg'd.
L 6" x 3 1/2" x 1/2" x 6'-4 3/8"	4
PL 1/4" x 1'-3" x 2'-3"	4
PL 3/8" x 1'-4" x 3'-8 3/4"	2
PL 3/8" x 1'-4" x 3'-10 3/4"	4
PL 3/8" x 1'-4" x 4'-4"	2
PL 3/8" x 1'-4" x 4'-10"	16
PL 3/8" x 3" x 2'-0"	60
PL 3/8" x 5" x 2'-0"	8
3/4" x 1'-0" Anchor Bolts	8
7/8" x 5" H.S. Bolts	156

* Includes 8 Anchor Bolts
 ** Quantities are Approximate only
 • See Special Provisions

SUMMARY OF QUANTITIES **						
		Item	Unit	Abut. 1	Abut. 2	Superstr.
23.3	704-0005	Class H.E.S. Cement Concrete	C.Y.	5	5	6
1.0	704-0003	Class B Cement Concrete	C.Y.	—	—	—
2.20	1090-0203	Epoxy Resin Mortar	C.F.	—	—	22
45	1017-0004	Cem. for Pressure Mort. Build-up	Bags	—	—	—
7.0	422-0133	Bit. Surf. Crse. FJ-1A, Wear Crse. SR-4	Tons	—	—	5
4.0	204-0100	Class 3 Excavation	C.Y.	4.5	4.5	—
4.0	205-0207	Sel. Borrow Exc. - Str. B'fill	C.Y.	4.5	4.5	—
687.0	1056-0400	Welding	L.F.	—	—	—
582.0	664-0001	Masonry Repointing, Type A	L.F.	500	500	—
1.0	1090-0020	Repair Exp. Brgs. L.R. Sta 363+00	L.S.	—	—	—
4.2	1003-0004	Dowel Holes, 10" Deep	Ea.	16	16	—
948.0	1002-0001	Reinforcement Bars	Lbs.	357	357	—
3869.0	1056-0100	Fabricated Structural Steel	Lbs.	—	—	—
1.0	1075-0200	Painting Portion of Existing Bridge	L.S.	—	—	—
1.0	2000-0002	Removal of Portion of Concrete Backwall	L.S.	—	—	—
1.0	2000-0003	Removal of Concrete Encasement on Structure	L.S.	—	—	—
1.0	608-0001	Mobilization	L.S.	—	—	—
1.0	901-0001	Maintenance and Protection of Traffic during Construction	L.S.	—	—	—
1.0	609-0004	Inspectors Field Office and Inspection Facilities, Type C	L.S.	—	—	—

Mark	Description	By	Chk'd.	App'd.	Date
REVISIONS					

Commonwealth of Pennsylvania
 DEPARTMENT OF TRANSPORTATION
 BUREAU OF DESIGN
 REPAIR DRAWINGS-LOCUST STREET BRIDGE
 CAMBRIA COUNTY
 L.R. 52 STA. 363+00
 2-SPAN THRU PLATE GIRDER BRIDGE
 OVER CONEMAUGH & BLACKLICK R.R.
 MISCELLANEOUS DETAILS

APPROVED 2-27-75
 Charles J. Allison
 Dist. BRIDGE ENGINEER

SHEET 4 OF 4
 S-11750

DISTRICT	9-0	DATE	CHK'D.	DATE
Designed	W.J.C.	6-73	W.E.B.	6-73
Drawn	W.J.C.	6-73	W.E.B.	6-73
Traced	G.W.N.	7-73	W.J.C.	7-73