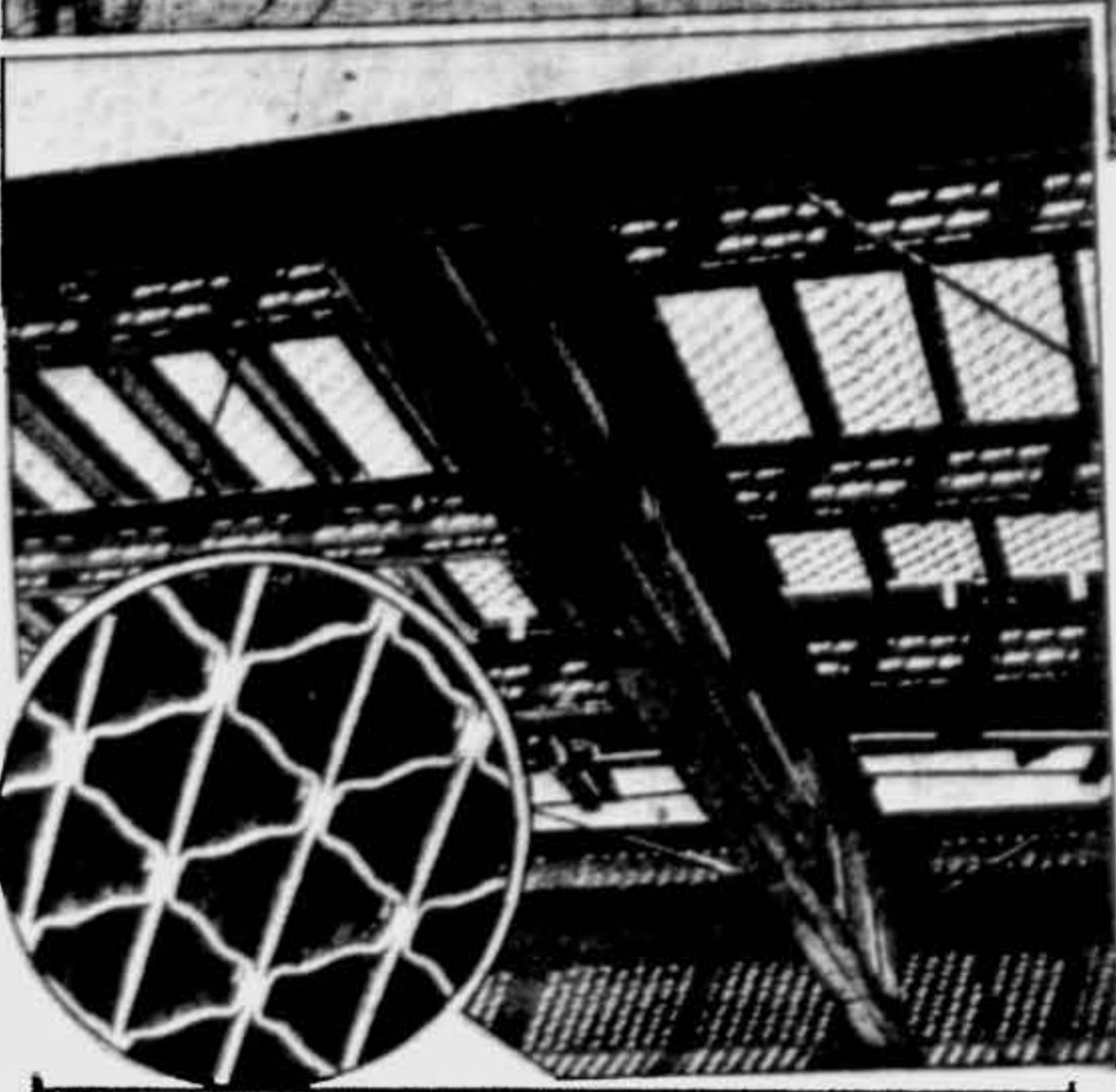
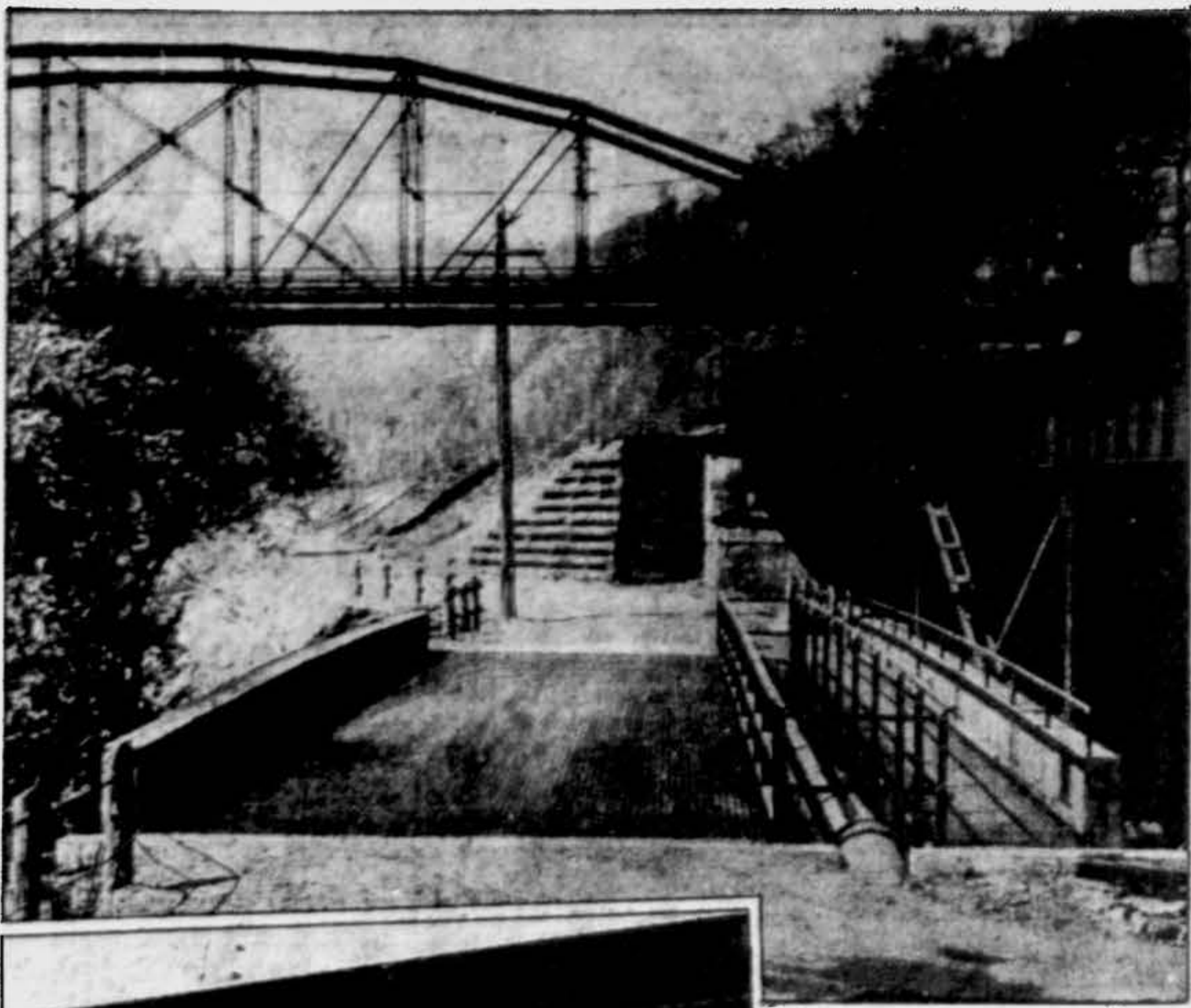


## PITTSBURGH BOASTS FIRST ALL-STEEL BRIDGE IN AMERICA

PITTSBURGH IS LABOR D



### 3 NEW ORDINANCES WOULD TAX HAILERS

Pre at t three taxin day. On all t all p hauli erty. Th blank will Ale siml annu opera taxin amou to be the next C. Ill kas, his v their rick. that

A half-century old bridge which has gone ultra-modern is the Nine-Mile Run Bridge at the end of Second Ave., now the first all-steel bridge in America. A general view of the bridge, reconstructed after flood waters washed away its flooring, is shown at top. Below is a view from beneath, showing the new "self-cleaning" floor of steel grating braced by new steel girders placed both lengthwise and across. Inset is a section of the grating in the floor.

## Spider-Web Floor Covering Described As Self-Cleaning

The St. Patrick's Day flood is responsible for the first all-steel bridge in America. It's the new 80-foot span bridging Nine Mile Run to link Second Ave. with the half a hundred or so families living in the McFadden Ave. district. When March flood waters receded, they took along the floor of the old bridge, leaving nothing but the steel girders. The bridge is the only connection to the city for the McFadden Ave. families, and immediate repairs were vital. Chief City Engineer Henry D. Johnson decided to use the flood opportunity to erect the all-steel bridge he has planned for more than two years. The whole job took only eight

days and cost \$4200. Even the floor of the new span is steel, a spider web-like grating. A smaller sized grating is used for the sidewalks. Chief advantage of the grating-type construction is its "self-cleaning" properties, particularly advantageous after snow storms because the bridge is hard to reach with snow plows. Mr. Johnson predicted the all-steel construction would prove useful in building many more bridges in the future, including spans much larger than the Nine Mile Run structure. Already the Department of Public Works is planning a second grating type bridge for Pittsburgh, replacing the Englert St. foot bridge recently torn down. Council has been asked for a \$3000 appropriation for this work and H. S. Ayers, the city's bridge engineer who was in charge of the flood emergency job, is ready to stretch the new span as soon as funds are available. Nine Mile Run bridge originally was built in 1836, with steel girders and a wooden floor. The Braddock trolley line used the bridge until 1907.

### HOLDUP REPORTED

Man Says Trio Stole From Him  
Man of Esplanade St., reported to police early had been held up in the 400 block Trippe of \$41. far of 425 First Ave.

(Advertisement)  
**FOOT COMFORT FOR 50c**