

CROCKETT BRIDGE

Pre-Bid Presentation

March 2nd, 2016



JACOBS®

www.jacobs.com | worldwide

Agenda

1. Introduction
2. Background
3. Why
4. What & When
5. Questions

Introduction

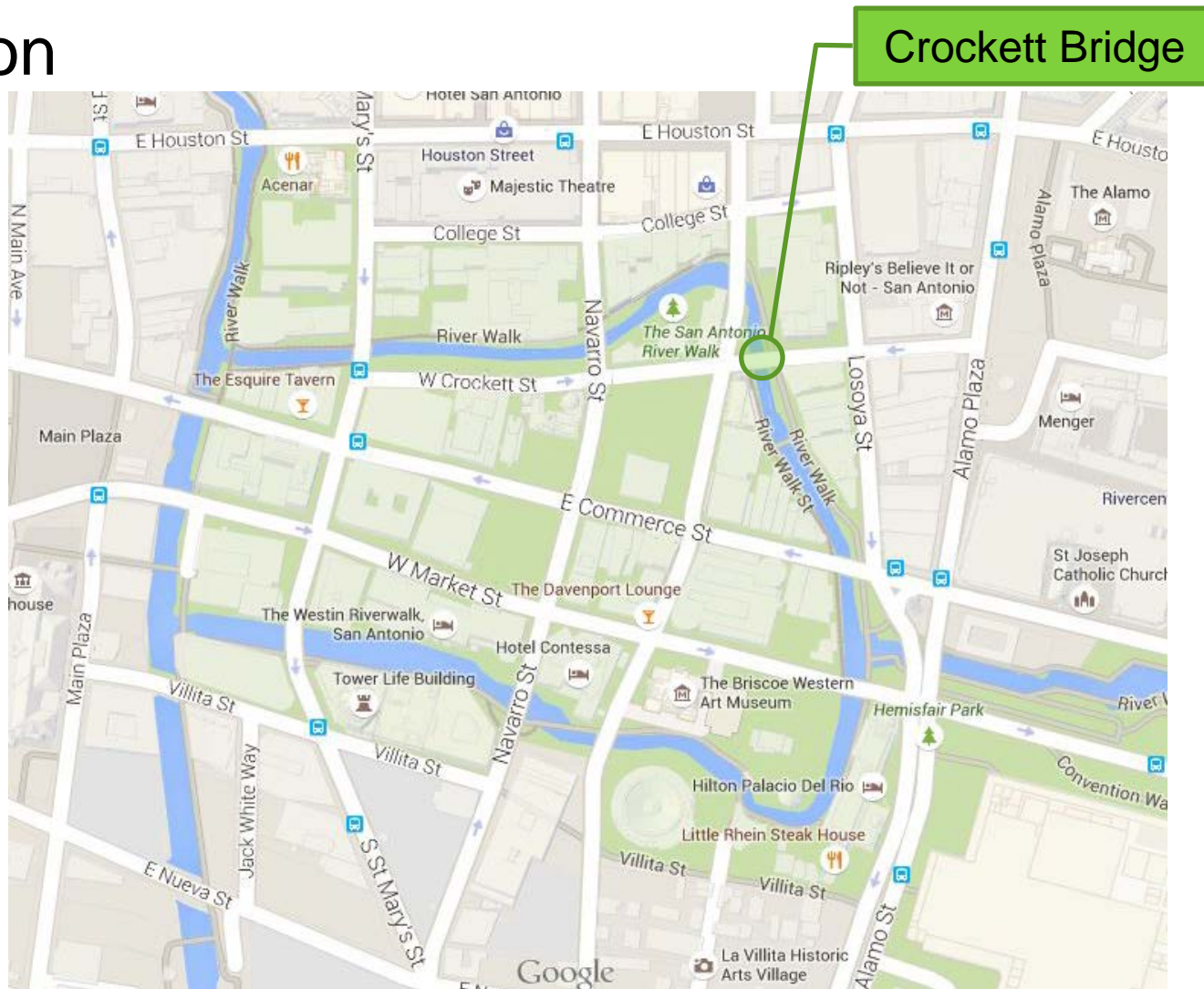
- COSA 2012-2017 Bond Program
- City Wide Bridge Program
- Transportation & Capital Improvements (TCI)
- Civil Engineering Design Services
 - Jacobs (Prime contractor)
 - MTR (Subcontractor)
 - SSA (Subcontractor)

Crockett Bridge

BACKGROUND

Background

Location



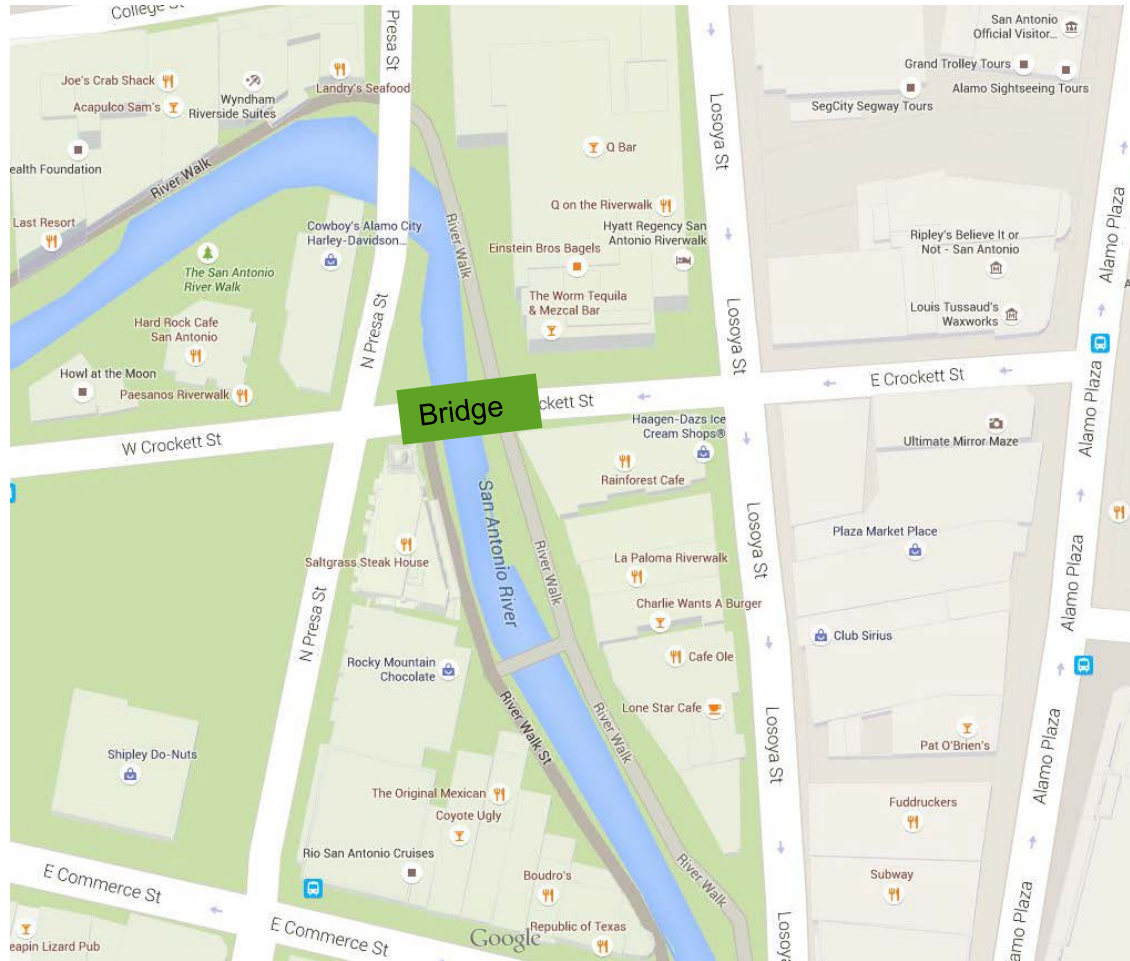
Background

Crockett Bridge



Background

Stakeholders

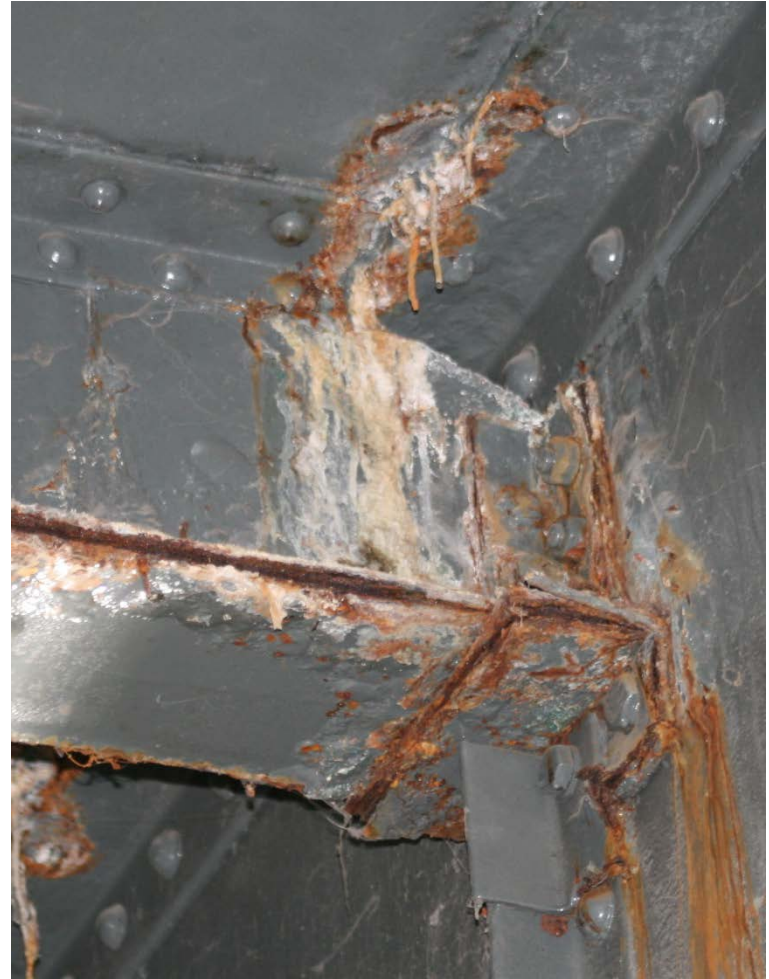


Crockett Bridge

Why

Why

Corroded Slab Support Beams (Stringers)



Why

Broken Edge Beams & Deficient Pedestrian Rail



Why

Cracked Slab



Sitting Water

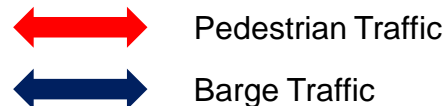
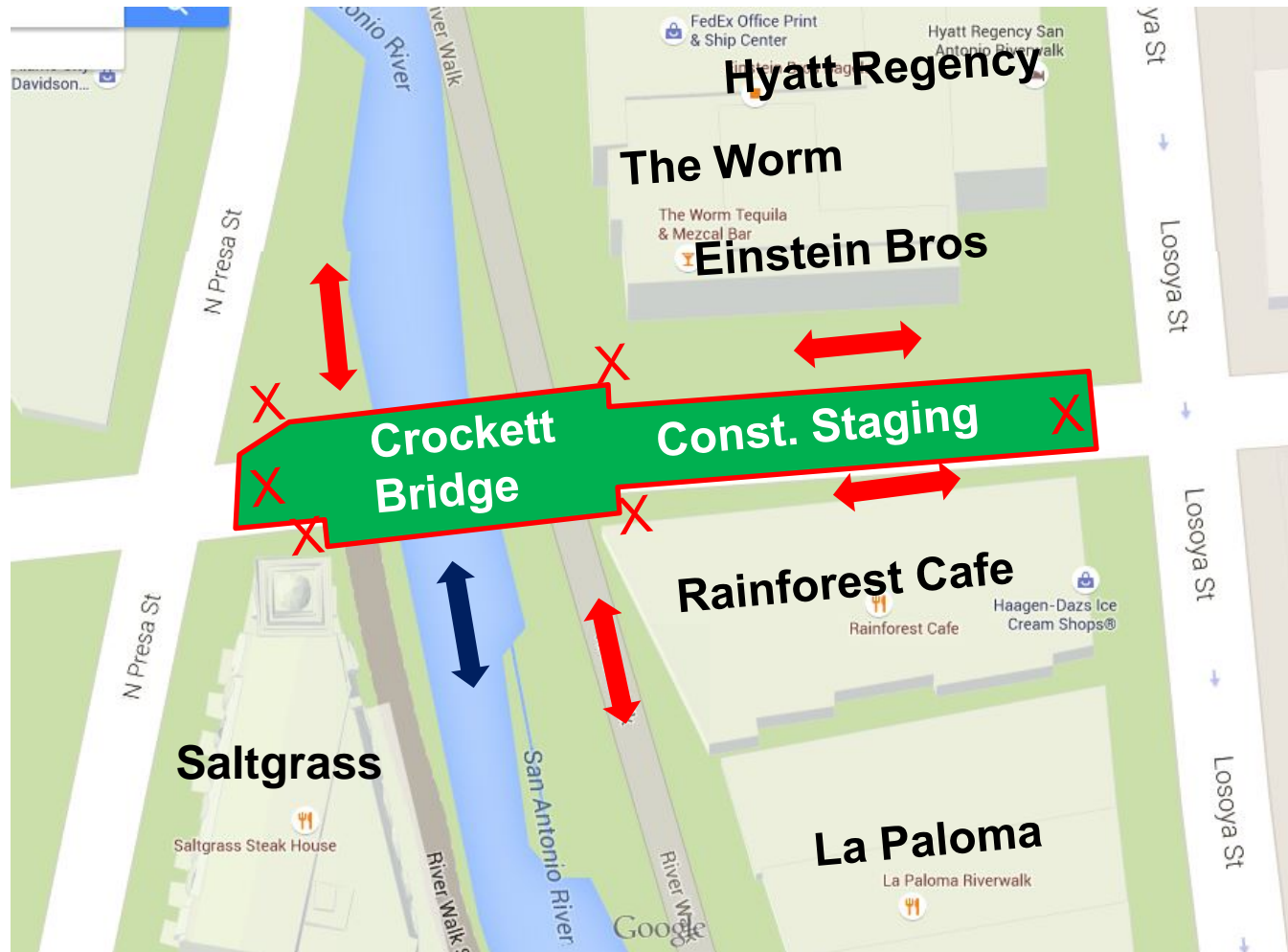


Crockett Bridge

WHAT & WHEN

What & When

Close Street to Cars & Pedestrians (Aug. 1st 2016)



What & When

- Street level closed (August '16 – June '17)
 - 14 days public notice prior to close
- River level open except critical activities
 - Critical activity closures 6 hrs/day max.
 - 4 days notice to barge operations and COSA
 - Not during special events
 - Access to businesses maintained throughout
- Work Hours
 - 8am to 7pm unless otherwise approved

What & When

- Fencing, Barricades, Overhead Protection



What & When

Vehicular Traffic Detour (August '16 – June '17)






 Project Location/Work Zone

 Traffic Flow

What & When

Pedestrian Detour (August '16 – June '17)



-  Project Location
-  Surface ADA Pedestrian Route #1
-  Surface ADA Pedestrian Route #2

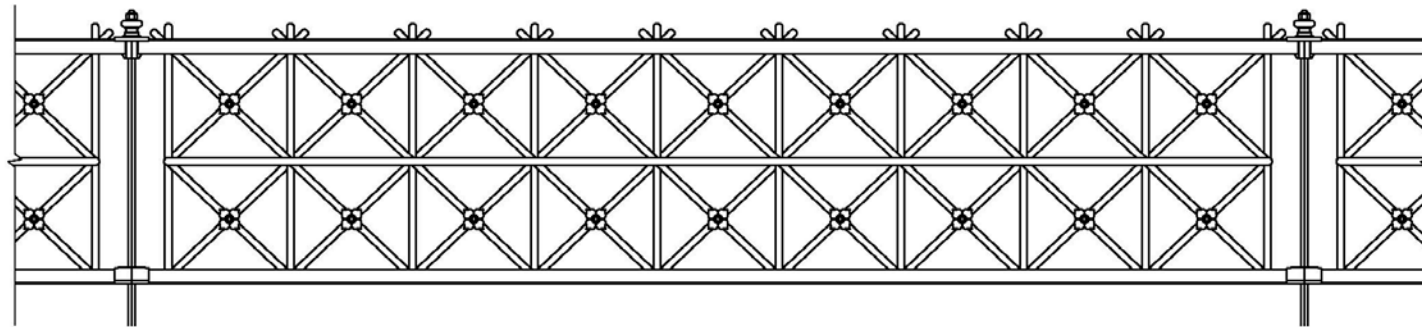
What & When

Remove, Modify, & Repair Rail (August '16)

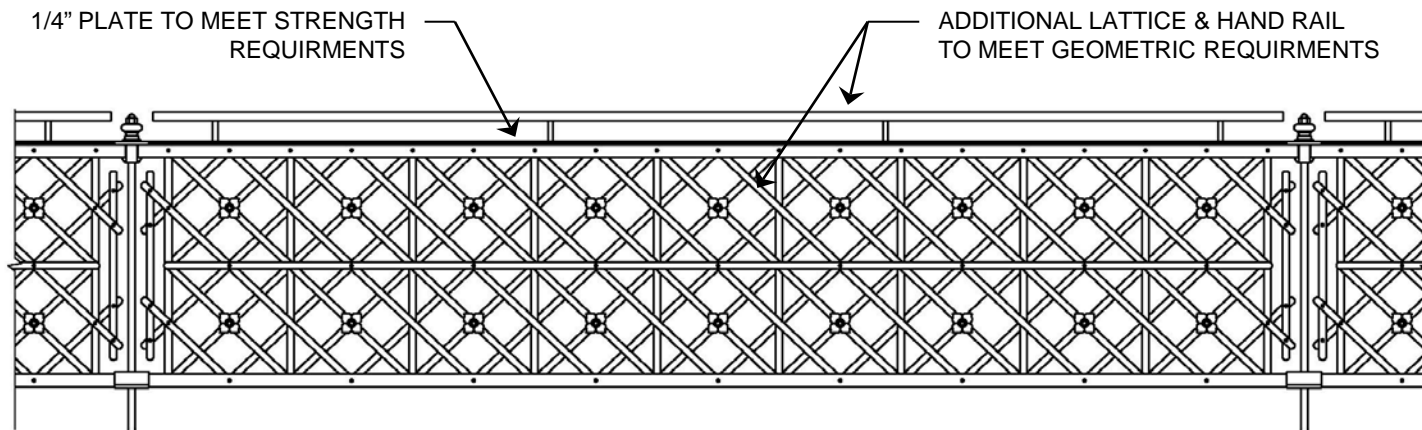


What & When

Rail Modification Installation (May '17)



EXISTING RAIL



PROPOSED RAIL

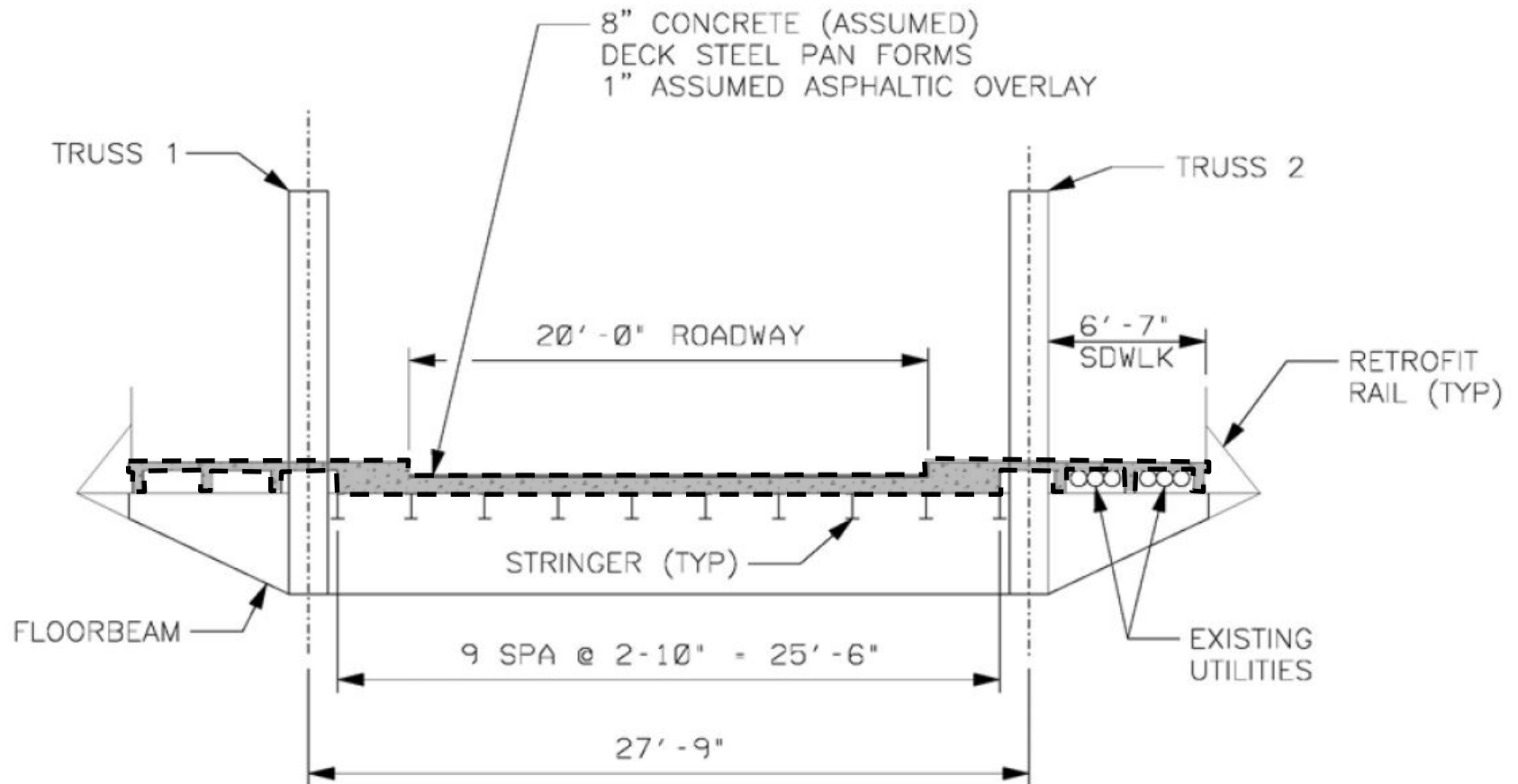
What & When

Cut & Remove Slab & Sidewalks (September '16)



What & When

Remove Slab & Sidewalks (Utilities)



What & When

Remove Stringers (Sept. & Oct. '16)



What & When

Repair & Replace Parts (Oct. '16 through Dec. '16)



What & When

Clean, Paint, and Re-Cast Slab (Jan.'17 to Mar.'17)



Sugarloaf Truss over Little River, Gause, TX

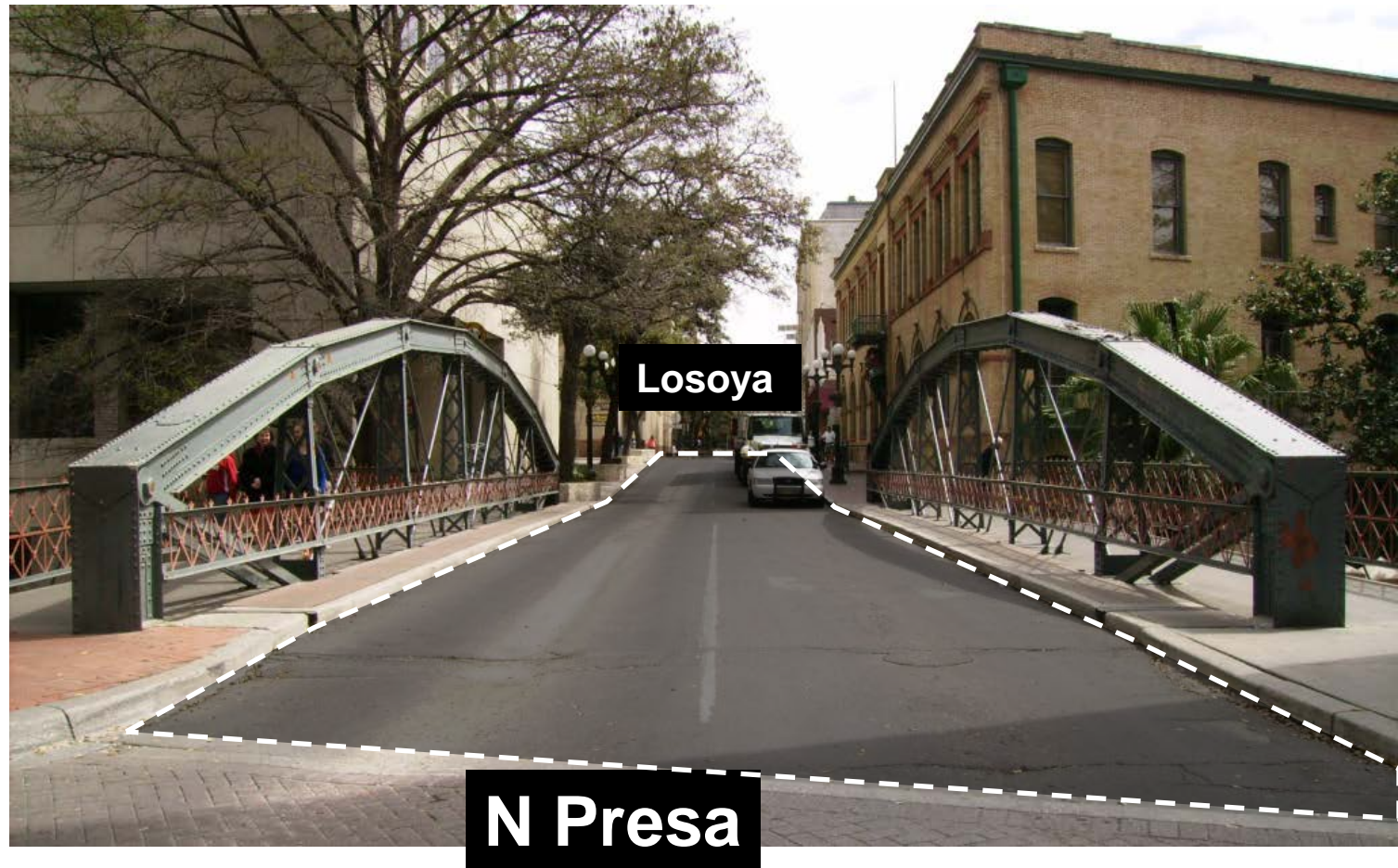
What & When

Provide a Drain Inlet to Capture Runoff (May '17)



What & When

Mill & Overlay Asphalt (May '17)



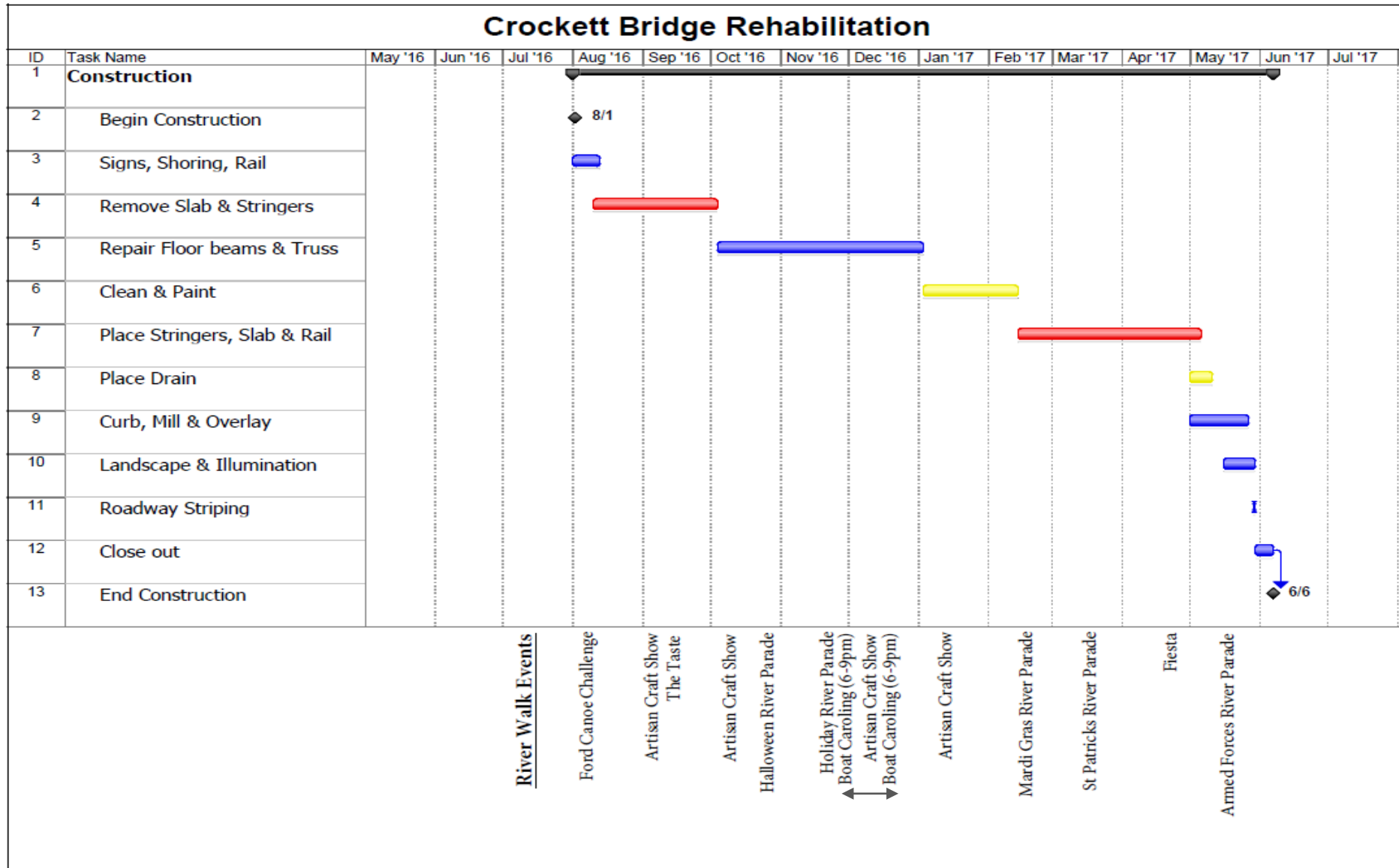
What & When

Illumination & Landscaping (Late May '17)

Project Closeout, Street Re-opens (Early June '17)



Schedule Overview



CROCKETT BRIDGE

Pre-Bid Presentation

QUESTIONS?

JACOBS®