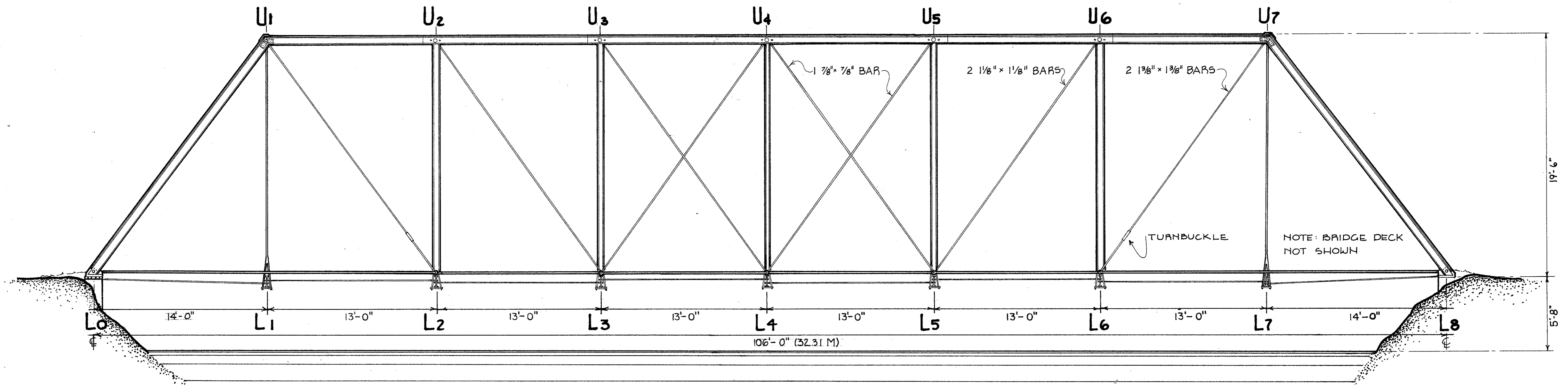
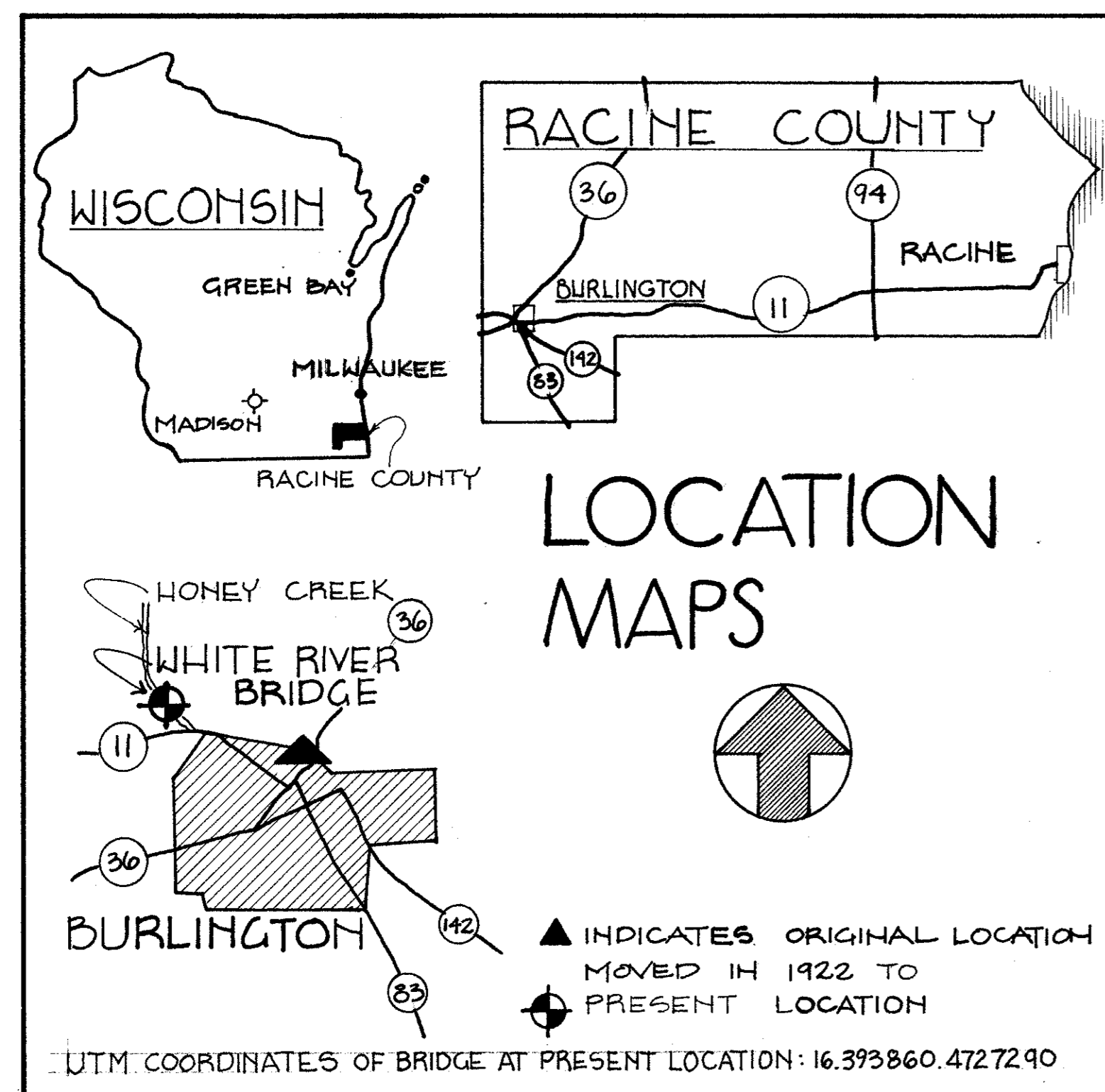


# WHITE RIVER BRIDGE · 1877

## BURLINGTON, WISCONSIN



**SOUTHEAST ELEVATION**



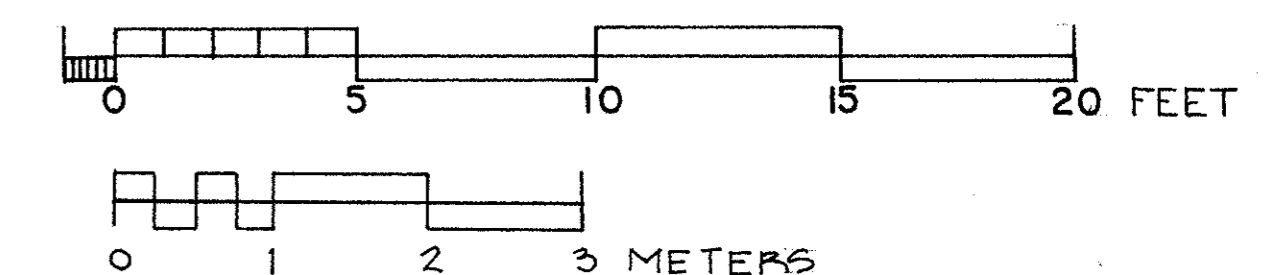
THE BIENEMANN BRIDGE, ORIGINALLY KNOWN AS THE WHITE RIVER BRIDGE, SERVED THE BURLINGTON COMMUNITY FROM 1877 TO 1922. MILWAUKEE BRIDGE AND IRON WORKS BUILT THE BRIDGE. BEGUN IN 1870, THE COMPANY INVOLVED ITSELF IN ALL PHASES OF BRIDGE BUILDING, INCLUDING DESIGN, FABRICATION AND CONSTRUCTION. BY THE TURN OF THE CENTURY, THE COMPANY HAD BECOME ONE OF THE LARGEST BRIDGE BUILDING FIRMS IN THE CENTRAL STATES. THE WHITE RIVER BRIDGE IS AN IMPORTANT EXAMPLE OF THE COMPANY'S WORK IN ITS FORMATIVE YEARS AND IS THE OLDEST KNOWN REMAINING TRUSS BRIDGE IN THE STATE OF WISCONSIN.

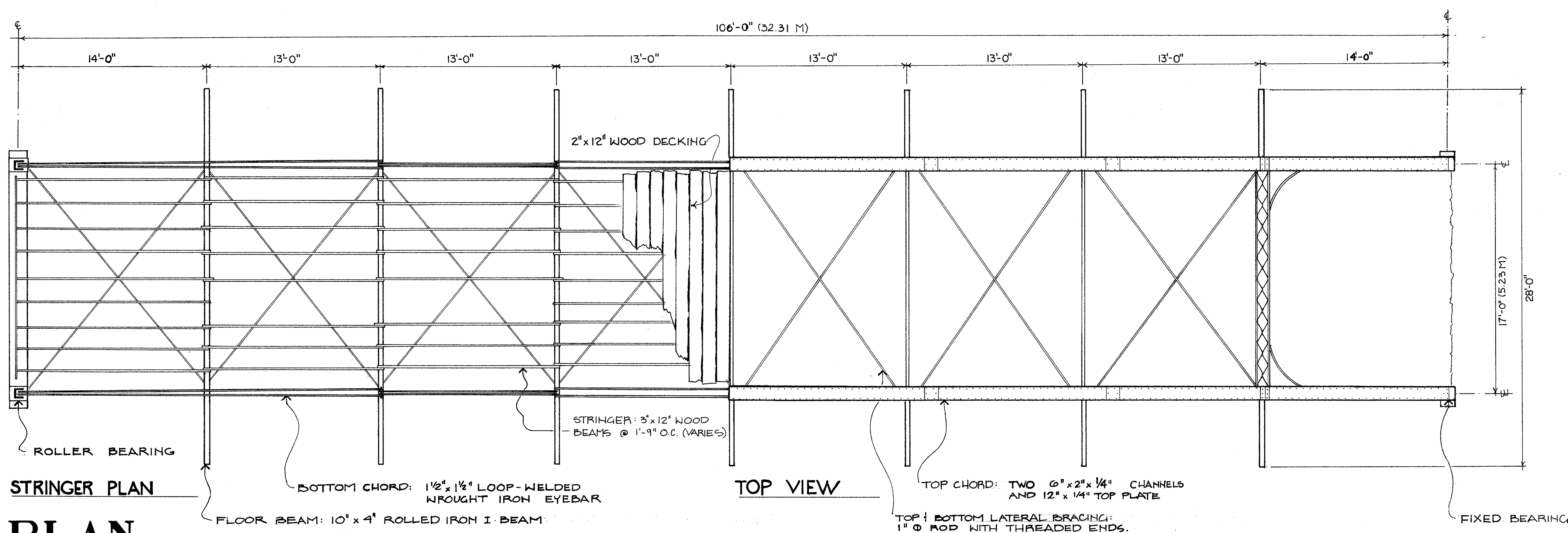
THE 106-FOOT BRIDGE WAS CONSTRUCTED UNDER THE SUPERVISION OF MR. N.R. DELAPLAIN. DURING THE SUMMER OF 1877, IT REPLACED A WOODEN BRIDGE SPANNING THE WHITE RIVER AT THE END OF CHESTNUT STREET IN THE

CENTER OF TOWN. AFTER FIFTY YEARS, THE WHITE RIVER BRIDGE WAS DECLARED UNSAFE AND THE CITY COUNCIL VOTED TO REPLACE IT WITH A MORE STABLE CONCRETE BRIDGE. IN 1922, THE OLD IRON BRIDGE WAS SOLD TO A PRIVATE INDIVIDUAL. UPON COMPLETION OF THE NEW BRIDGE, IN JULY OF 1922, COMPANY WORKERS DISASSEMBLED THE OLD BRIDGE AND RECONSTRUCTED IT IN ITS PRESENT LOCATION OVER HONEY CREEK NEAR THE BIENEMANN FARM.

(SEE SHEET 2 FOR PROJECT CREDIT STATEMENT.)

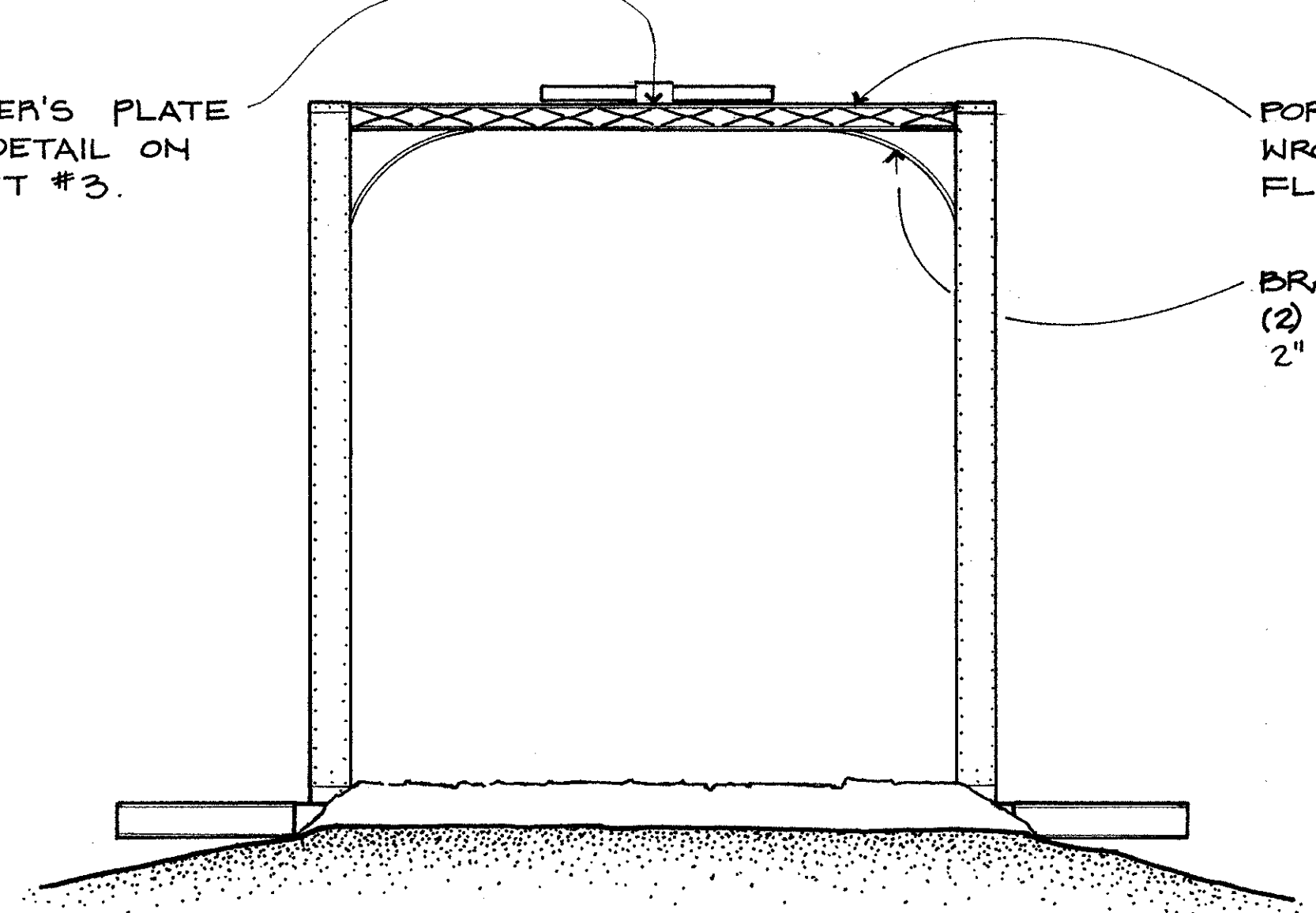
SCALE: 1/4" = 1'-0"





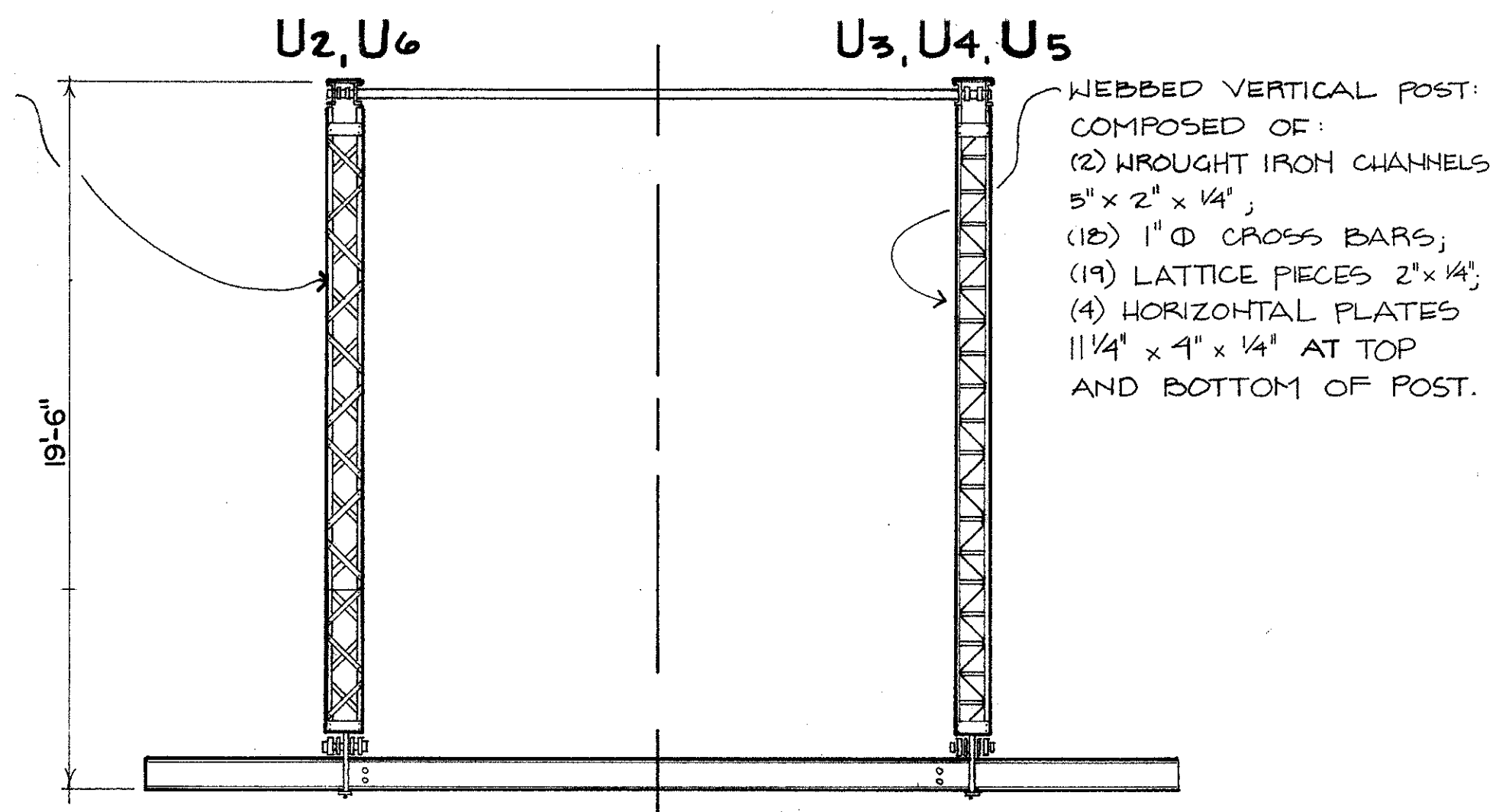
# PLAN

BUILDER'S PLATE SEE DETAIL ON SHEET #3.

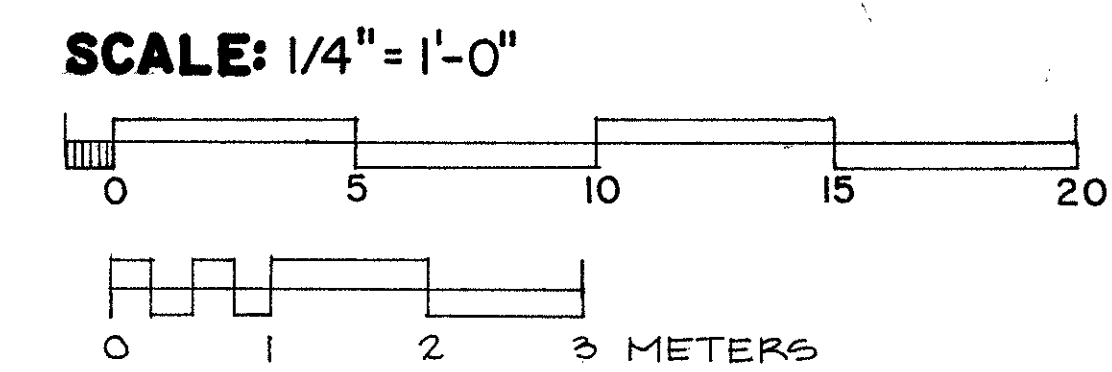


# SOUTHWEST ELEVATION

WEBBED VERTICAL: (COMPOSED OF (2) WROUGHT IRON CHANNELS 6" x 2" x 1/4"; (4) HORIZONTAL BARS 1 1/4" x 4" x 1/4"; (24) LATTICE PIECES 16" x 2" x 1/4").



THE WHITE RIVER BRIDGE WAS DOCUMENTED IN JUNE 1987 FOR THE HISTORIC AMERICAN ENGINEERING RECORD UNDER CONTRACT WITH THE WISCONSIN DEPARTMENT OF TRANSPORTATION. THE HAER TEAM INCLUDED: JOSEPH BILELLO, SUPERVISORY ARCHITECT, DAVID JAMISON AND ED CORDES, DELINEATORS; MARTY STUPICH, PHOTOGRAPHER; DIANE KROMM, SUPERVISORY HISTORIAN; AND LOLA BENNETT, HISTORIAN.



DELINEATED BY: DAVID E. JAMISON, 1987  
 WISCONSIN BRIDGE RECORDING TEAM  
 HISTORIC AMERICAN ENGINEERING RECORD  
 UNITED STATES DEPARTMENT OF THE INTERIOR

WHITE RIVER (BIENEMANN) BRIDGE, 1877  
 SPANNING HONEY CREEK BETWEEN THE BIENEMANN FARM & BIENEMANN ROAD  
 BURLINGTON RACINE COUNTY WISCONSIN

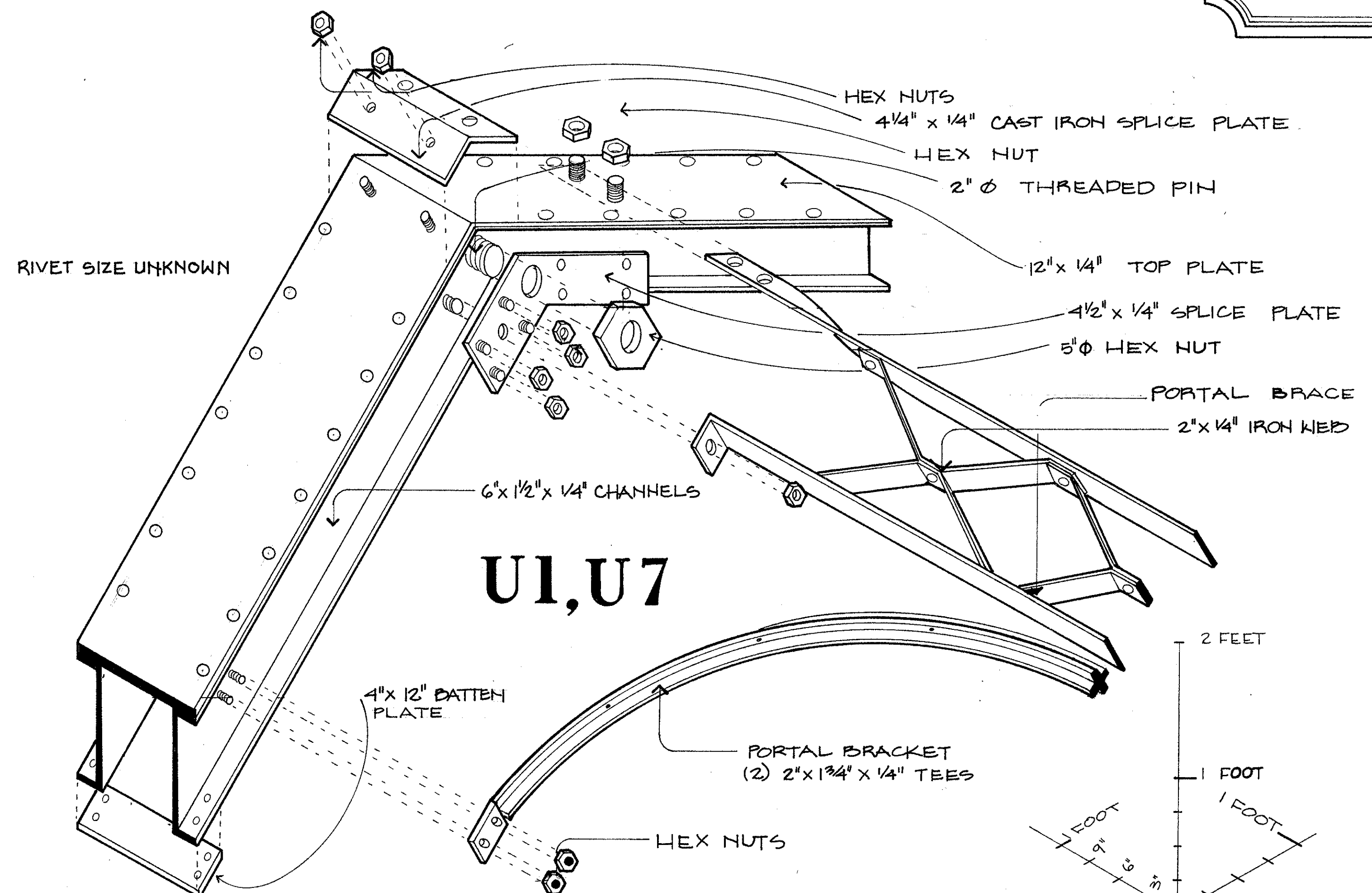
HISTORIC AMERICAN ENGINEERING RECORD  
 SHEET 2 of 3  
 WI - 16

IF REPRODUCED, PLEASE CREDIT: HISTORIC AMERICAN ENGINEERING RECORD, NATIONAL PARK SERVICE, NAME OF DELINEATOR, DATE OF THE DRAWING

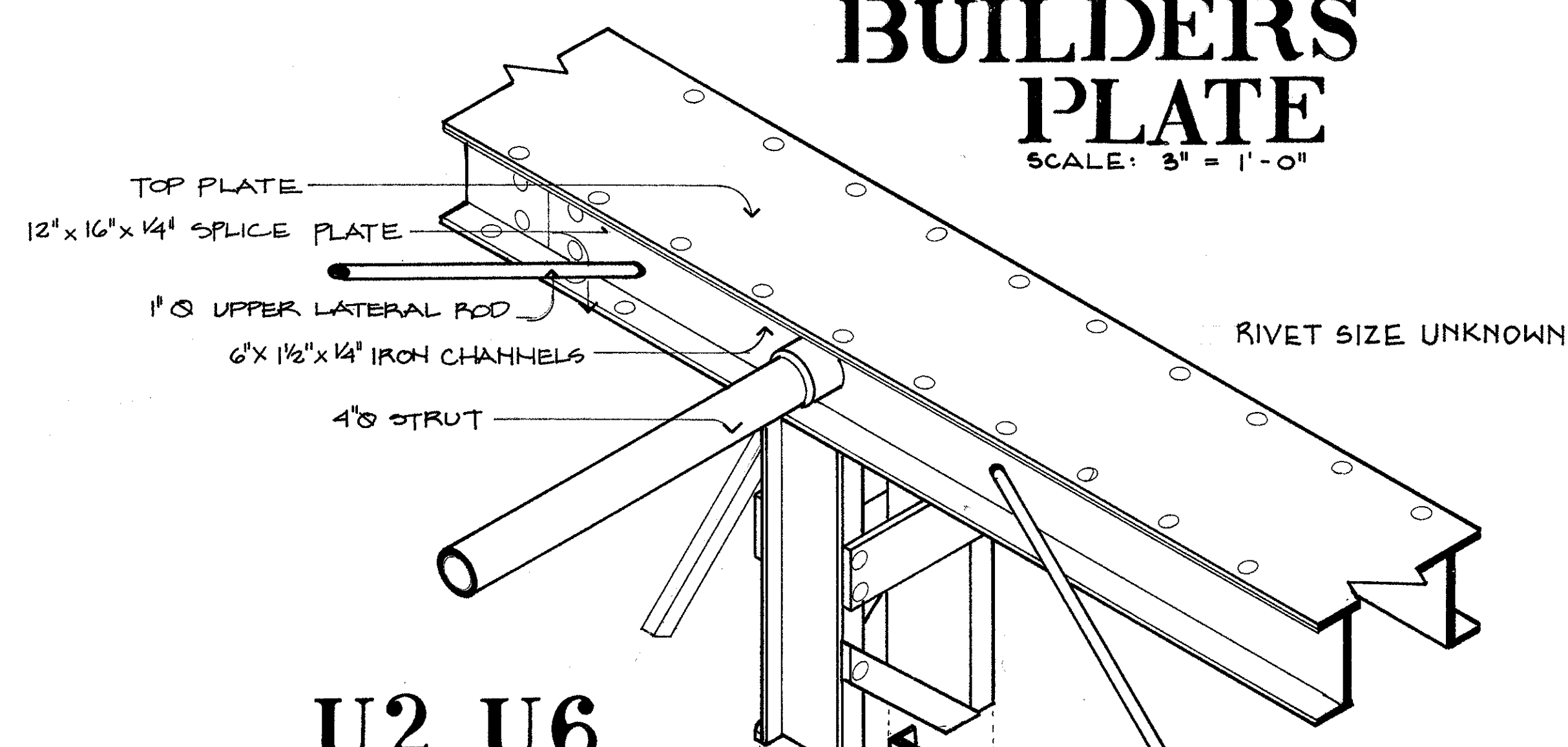
# MILWAUKEE BRIDGE 1877 AND IRON WORKS.

## BUILDERS PLATE

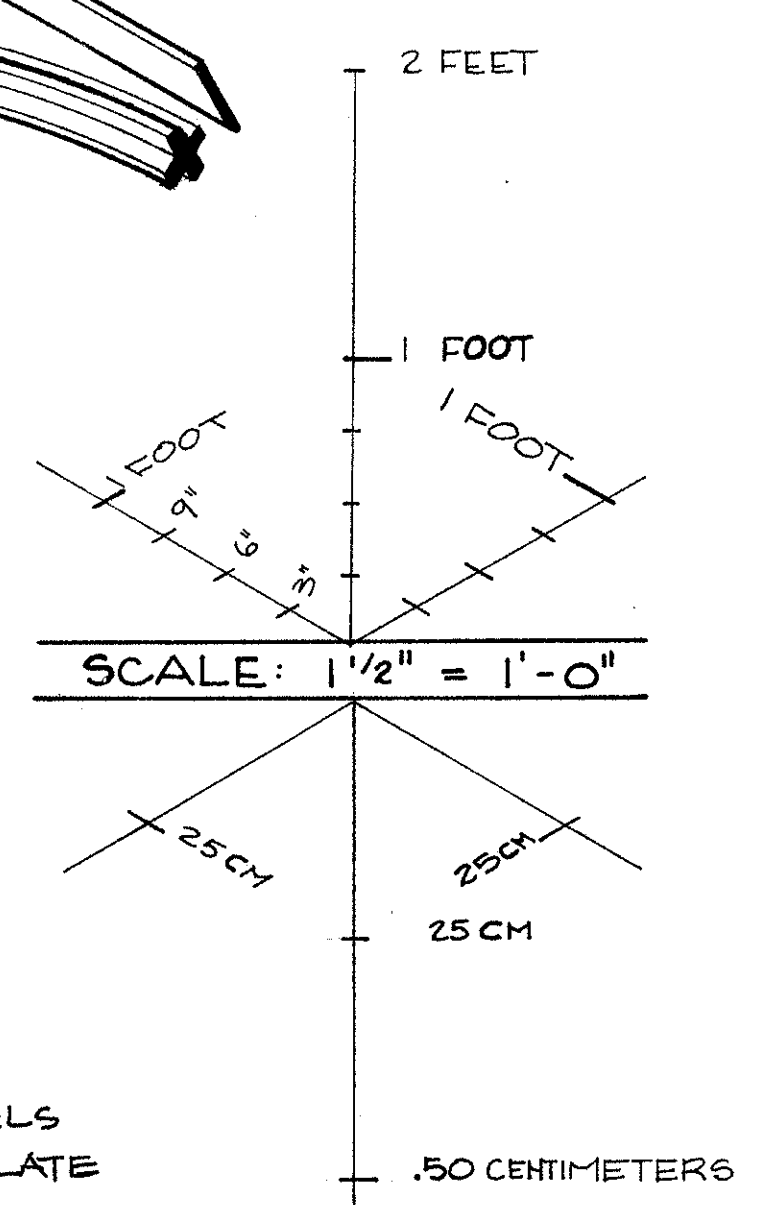
SCALE: 3" = 1'-0"



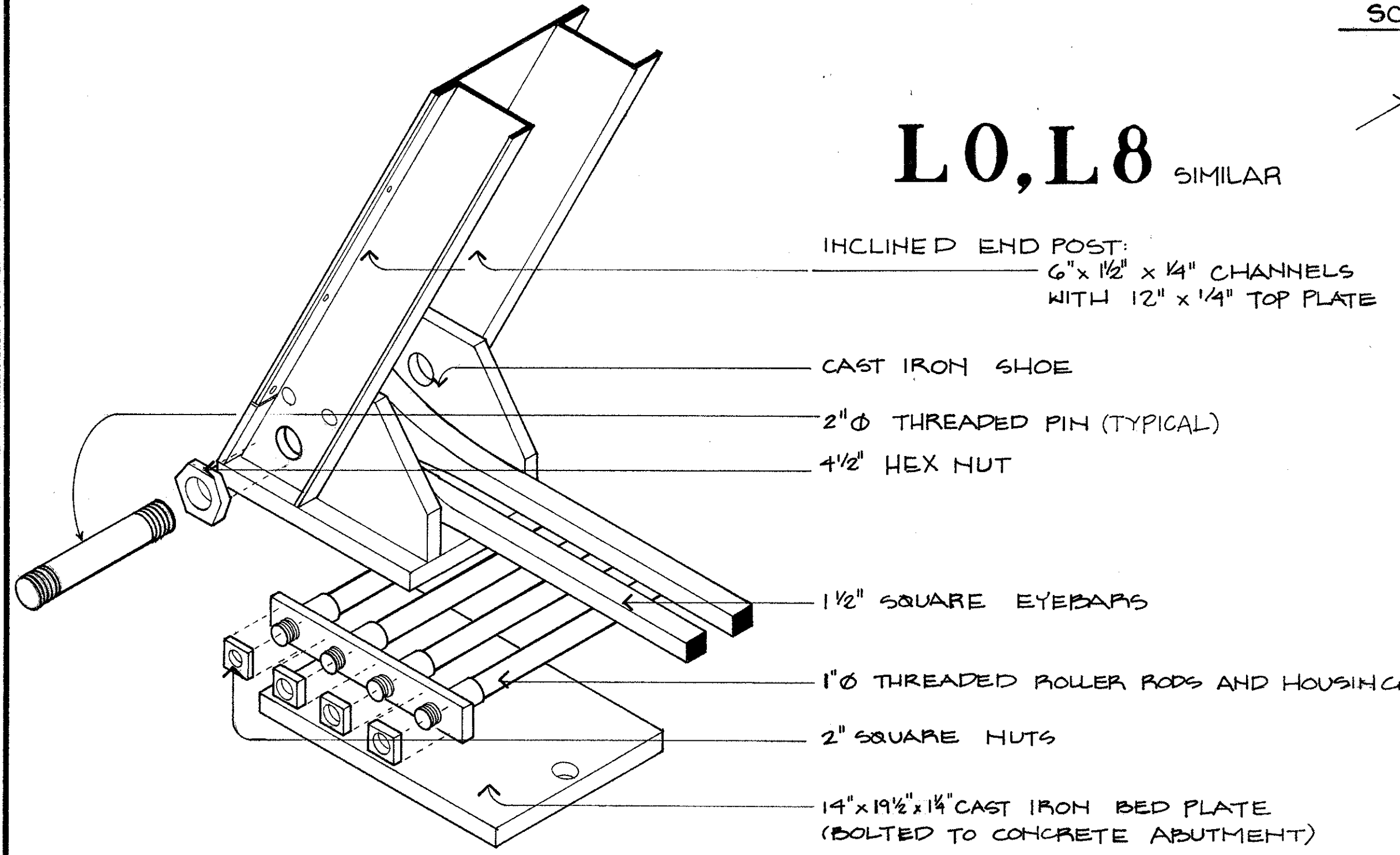
**U1, U7**



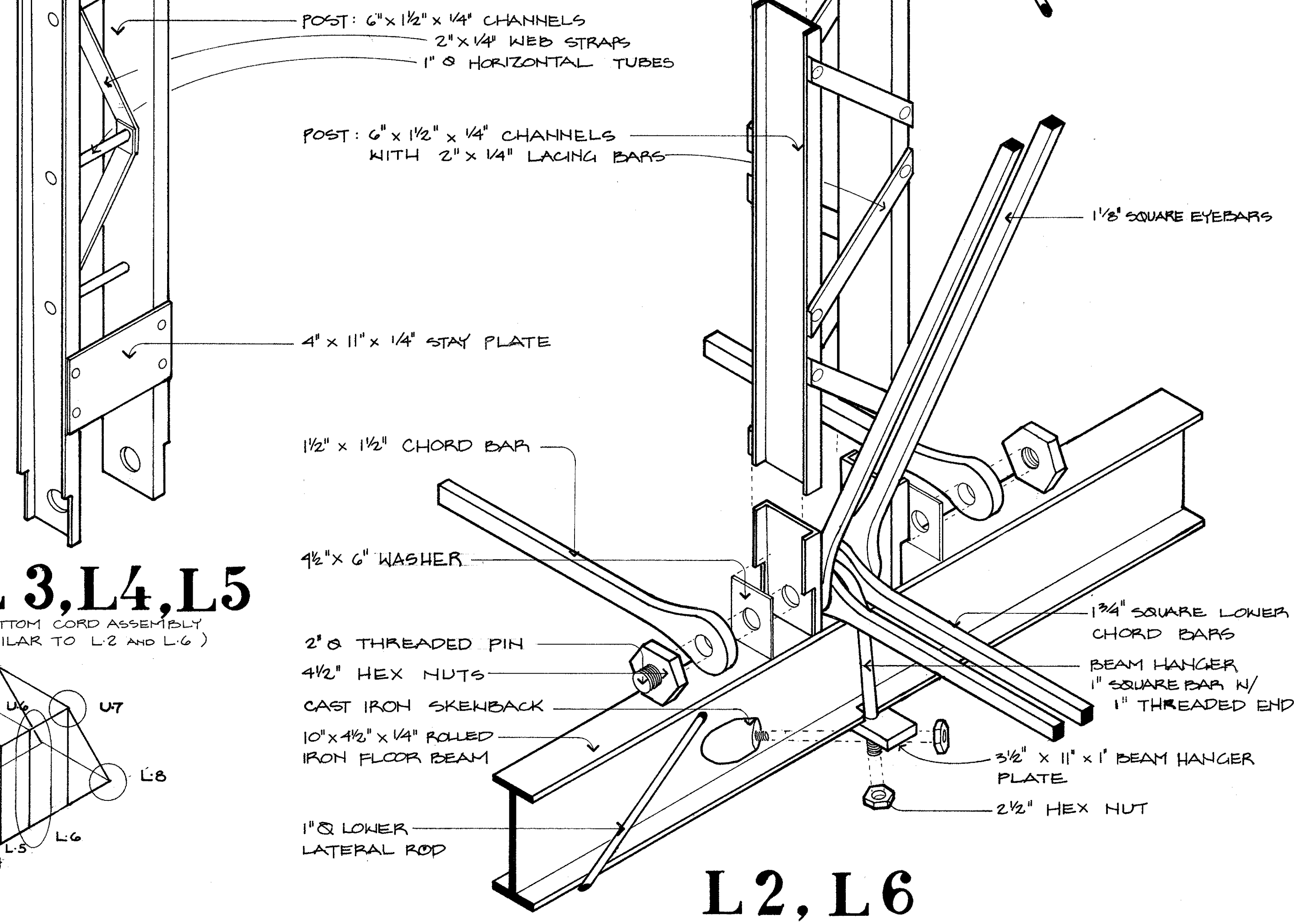
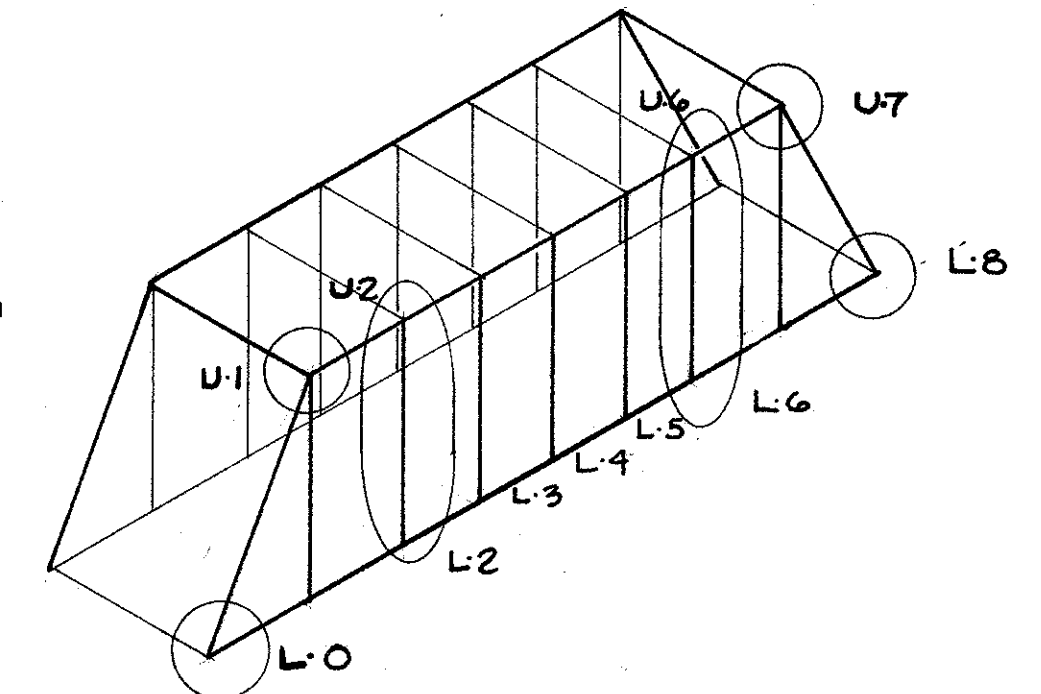
**U2, U6**



**L0, L8** SIMILAR



**L3, L4, L5**  
(BOTTOM CHORD ASSEMBLY  
SIMILAR TO L2 AND L6)



**L2, L6**

DELINEATED BY: DAVID E. JAMISON, 1987  
WISCONSIN BRIDGE RECORDING TEAM  
HISTORIC AMERICAN ENGINEERING RECORD  
UNITED STATES DEPARTMENT OF THE INTERIOR

WHITE RIVER (BIENEMANN) BRIDGE, 1877  
SPANNING HONEY CREEK BETWEEN THE BIENEMANN FARM & BIENEMANN ROAD  
BURLINGTON RACINE COUNTY WISCONSIN

HISTORIC AMERICAN  
ENGINEERING RECORD  
WI - 16  
SHEET  
3 OF 3

IF REPRODUCED, PLEASE CREDIT: HISTORIC AMERICAN ENGINEERING RECORD, NATIONAL PARK SERVICE, NAME OF DELINEATOR, DATE OF THE DRAWING