

2. WisDOT Designation: P-20-720

Historic Name: Lakeside Park Bridge

Common Name: Lakeside Park Bridge

Location: Promen Drive over the Main Channel of Lakeside Creek,
Lakeside Park, City of Fond du Lac, Foud du Lac County

Construction Date: 1927

Engineer: Charles S. Whitney

Contractor: J. Rassmussen and Sons Company

Architectural & Engineering Significance: The Lakeside Park Bridge in the City of Fond du Lac is a single-span, filled-spandrel, reinforced-concrete, barrel-arch bridge. Overall structure length is 100 ft. Overall width is 33.42 ft. The arch span is 60 ft. with a rise of almost 8 ft., giving the structure an aesthetically-pleasing, low rise-to-span ratio. The railings and abutments are stone-faced, with artificial stone coping on the railings, and decorative urns at the four corners. The outside faces of the spandrel walls are bush-hammered concrete. It is a well-preserved example of the stone-faced concrete design typical of Charles Whitney (1892-1959), and similar in concept (but not in surface treatment) to Whitney's 1939 Highland Avenue Bridge (P-45-703) in Cedarburg, Ozaukee County.¹³⁷ The Highland Avenue Bridge exhibits rougher, more medieval-revival stone treatment, in contrast to the Lakeside Park Bridge, which has neo-classical elements. (See Figures 103 and 110 [cf. Figures 142-145, Highland Avenue Bridge].)

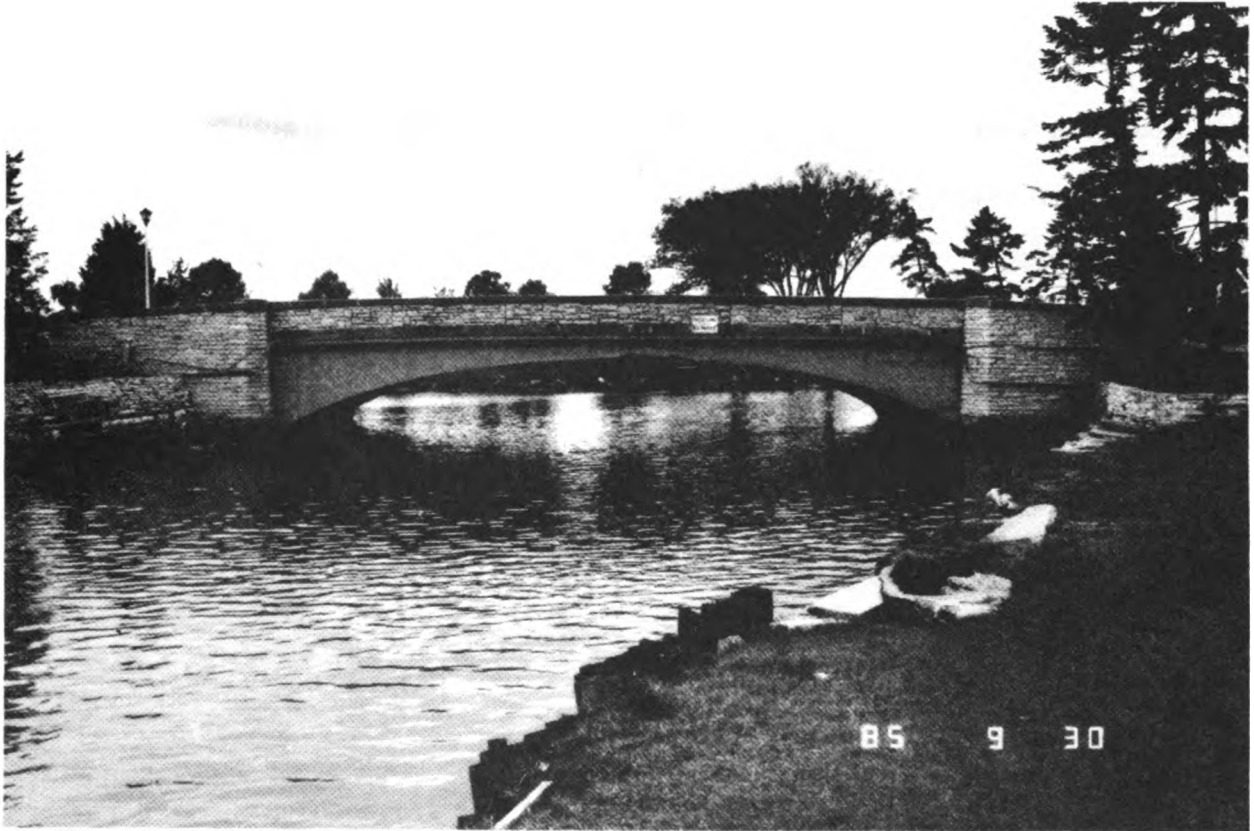


FIGURE 110: Lakeside Park Bridge (P-20-720), Lakeside Park, Fond du Lac, Fond du Lac County. Built 1927; Charles S. Whitney, engineer. (Source: Robert M. Frame III, 1985.)

Historical Significance: The Lakeside Park Bridge was designed by Charles S. Whitney and built by J. Rasmussen & Sons for the city park board in 1927. Clearly a bridge of special aesthetic appeal was desired for this location, a central site in the park and very close to the lake. The original newspaper announcement of the project referred to the new structure as an "ornamental lagoon bridge."¹³⁸ Today, a small metal-bowstring-truss, now a pedestrian bridge, stands near this representative Whitney park bridge of the 1920s. Together they create a compact and highly visible bridge exhibit, open to the public all year.