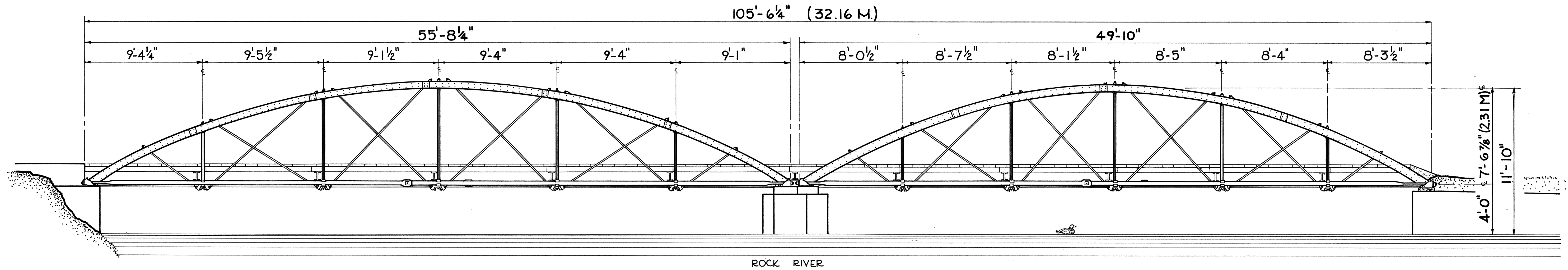


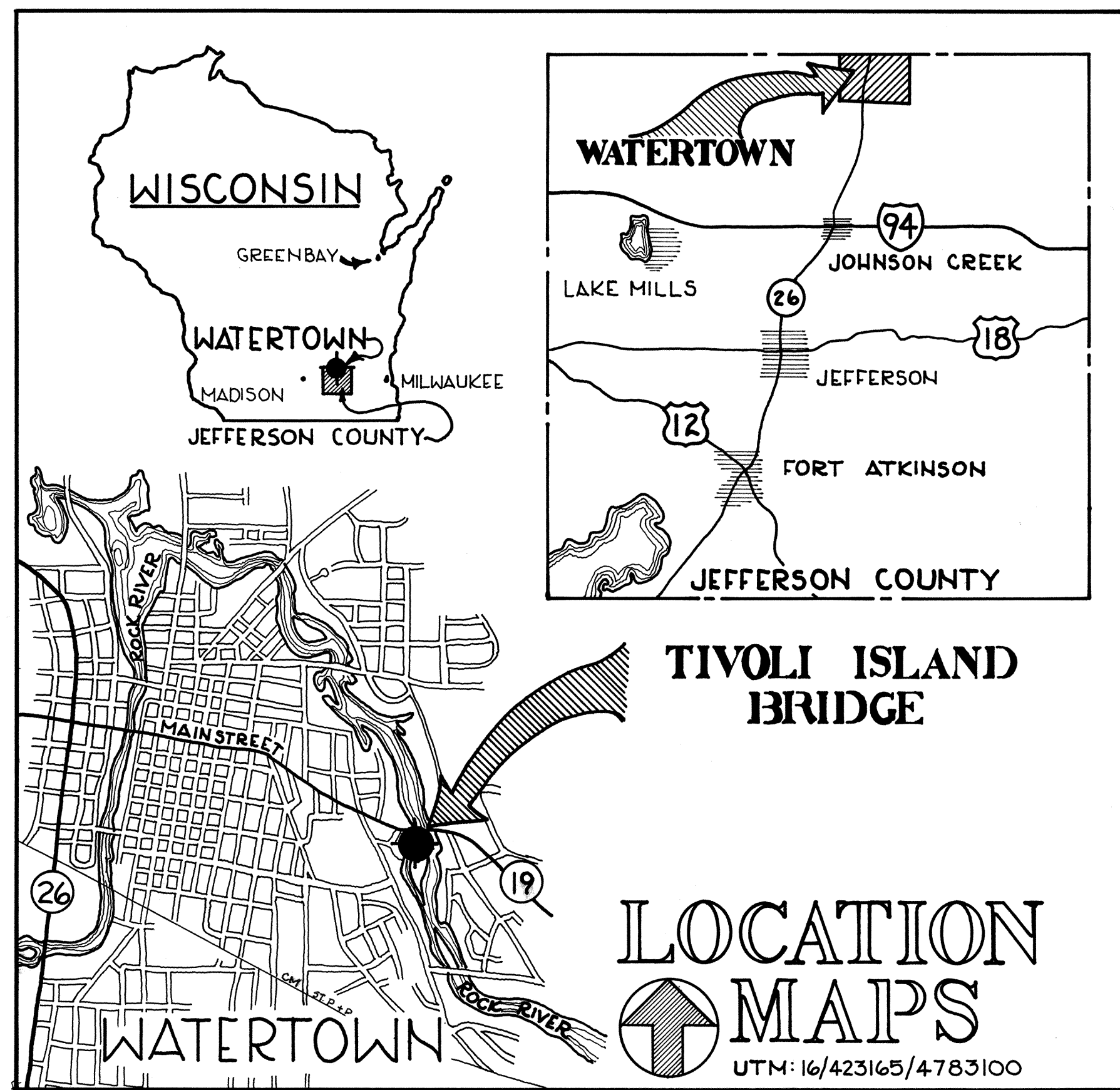
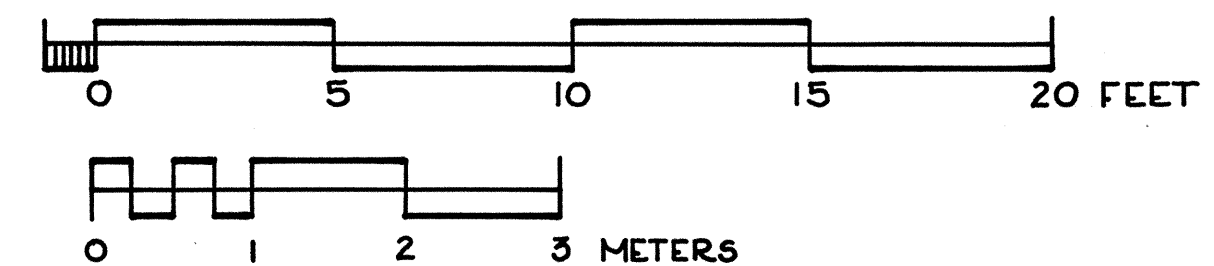
TIVOLI ISLAND BRIDGE • c. 1877

WATERTOWN, WISCONSIN



EAST ELEVATION

SCALE: 1/4" = 1'-0"



IN 1866, ZENAS KING, OF OHIO, RECEIVED A PATENT FOR AN INNOVATIVE TUBULAR IRON-ARCH BRIDGE DESIGN. INCREASING THE SECTIONAL AREA OF THE TOP CHORD TOWARD THE ENDS OF THE ARCH, HE CLAIMED, STRENGTHENED THE BRIDGE. PROBABLY BUILT IN 1877, THE TIVOLI ISLAND BRIDGE INCORPORATED THIS DESIGN PRINCIPLE. THE KING IRON AND BRIDGE MANUFACTURING COMPANY, CLEVELAND, OHIO, POPULARIZED THE TUBULAR IRON-ARCH BY BUILDING NUMEROUS EXAMPLES THROUGHOUT THE UNITED STATES.

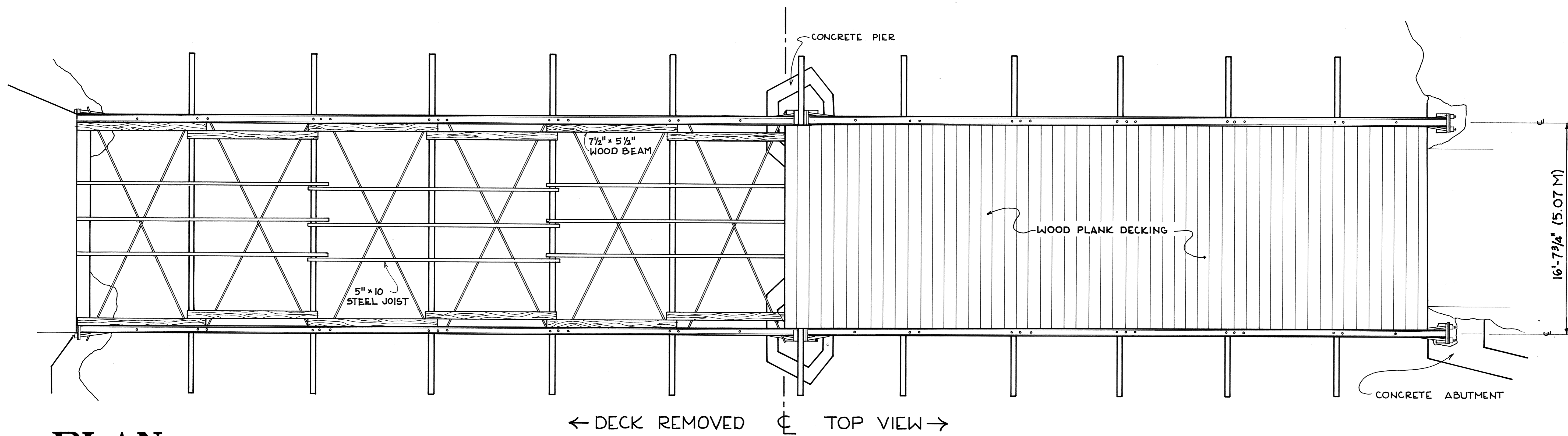
APPARENTLY THE TIVOLI ISLAND BRIDGE WAS ORIGINALLY PART OF A FOUR-SPAN STRUCTURE OVER THE CRAWFISH RIVER IN THE VILLAGE OF MILFORD. IN 1906, TWO WATERTOWN RESIDENTS ARRANGED TO HAVE A TWO-SPAN SECTION MOVED TO THE PRESENT LOCATION AT TIVOLI ISLAND. IN WISCONSIN, THE BRIDGE IS ONE OF ONLY SEVEN

REMAINING BOWSTRINGS AND THE LAST EXAMPLE OF A TUBULAR ARCH DESIGN IN WISCONSIN.

THE TIVOLI ISLAND BRIDGE WAS DOCUMENTED IN THE SUMMER OF 1987 AS PART OF THE WISCONSIN HISTORIC BRIDGE RECORDING PROJECT BY THE HISTORIC AMERICAN ENGINEERING RECORD (HAER), NATIONAL PARK SERVICE, U.S. DEPARTMENT OF INTERIOR. THE PROJECT WAS CO-SPONSORED BY THE WISCONSIN DEPARTMENT OF TRANSPORTATION, MARVIN SCHAEFFER, ADMINISTRATOR, DIVISION OF HIGHWAYS & TRANSPORTATION SERVICES.

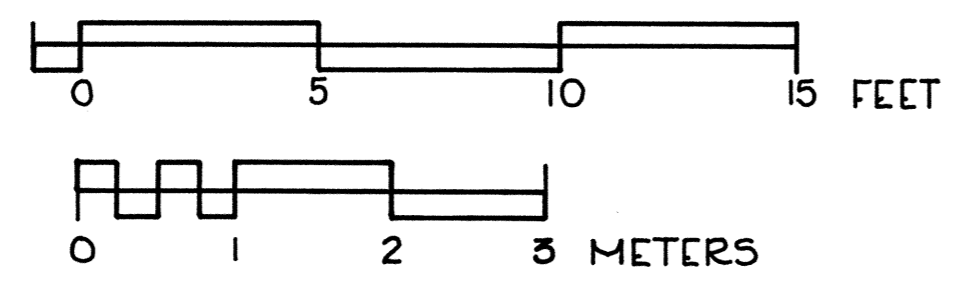
FIELD WORK AND DOCUMENTATION, MEASURED DRAWINGS, HISTORICAL REPORTS AND PHOTOGRAPHS WERE PREPARED UNDER THE GENERAL DIRECTION OF DR. ROBERT KAPSCH, CHIEF, HISTORIC AMERICAN BUILDINGS SURVEY/HISTORIC AMERICAN ENGINEERING RECORD. THE FIELD TEAM, UNDER THE DIRECTION OF ERIC DELONY, CHIEF AND PRINCIPAL ARCHITECT, HAER, CONSISTED OF JOSEPH BILLELLO (UNIVERSITY OF NEW MEXICO), PROJECT SUPERVISOR, DIANE KROMM (HAGLEY FOUNDATION) PROJECT HISTORIAN, ARCHITECTURAL TECHNICIANS: DAVID JAMISON (OHIO STATE UNIVERSITY) AND SCOTT BARBER (UNIVERSITY OF WISCONSIN - MILWAUKEE); ARCHITECTURAL HISTORIANS: LOLA BENNETT (UNIVERSITY OF VERMONT) AND ED CORDES (CREIGHTON UNIVERSITY); AND PHOTOGRAPHER MARTY STUPICH (MASSACHUSETTS COLLEGE OF ART). ROBERT NEWBERY, HISTORIAN (WISCONSIN DEPARTMENT OF TRANSPORTATION) WAS PROJECT ADVISOR.

HISTORIC AMERICAN ENGINEERING RECORD
 SHEET 1 of 2
 TIVOLI ISLAND BRIDGE, c. 1877
 SPANNING THE ROCK RIVER TO TIVOLI ISLAND ADJACENT TO MAIN STREET, EASTERN TOWN LIMITS
 WATERTOWN, WISCONSIN
 DELINEATED BY SCOTT BARBER, 1987
 WISCONSIN BRIDGE RECORDING TEAM
 HISTORIC AMERICAN ENGINEERING RECORD
 UNITED STATES DEPARTMENT OF THE INTERIOR
 IF REPRODUCED, PLEASE CREDIT: HISTORIC AMERICAN ENGINEERING RECORD, NATIONAL PARK SERVICE, NAME OF DELINEATOR, DATE OF THE DRAWING

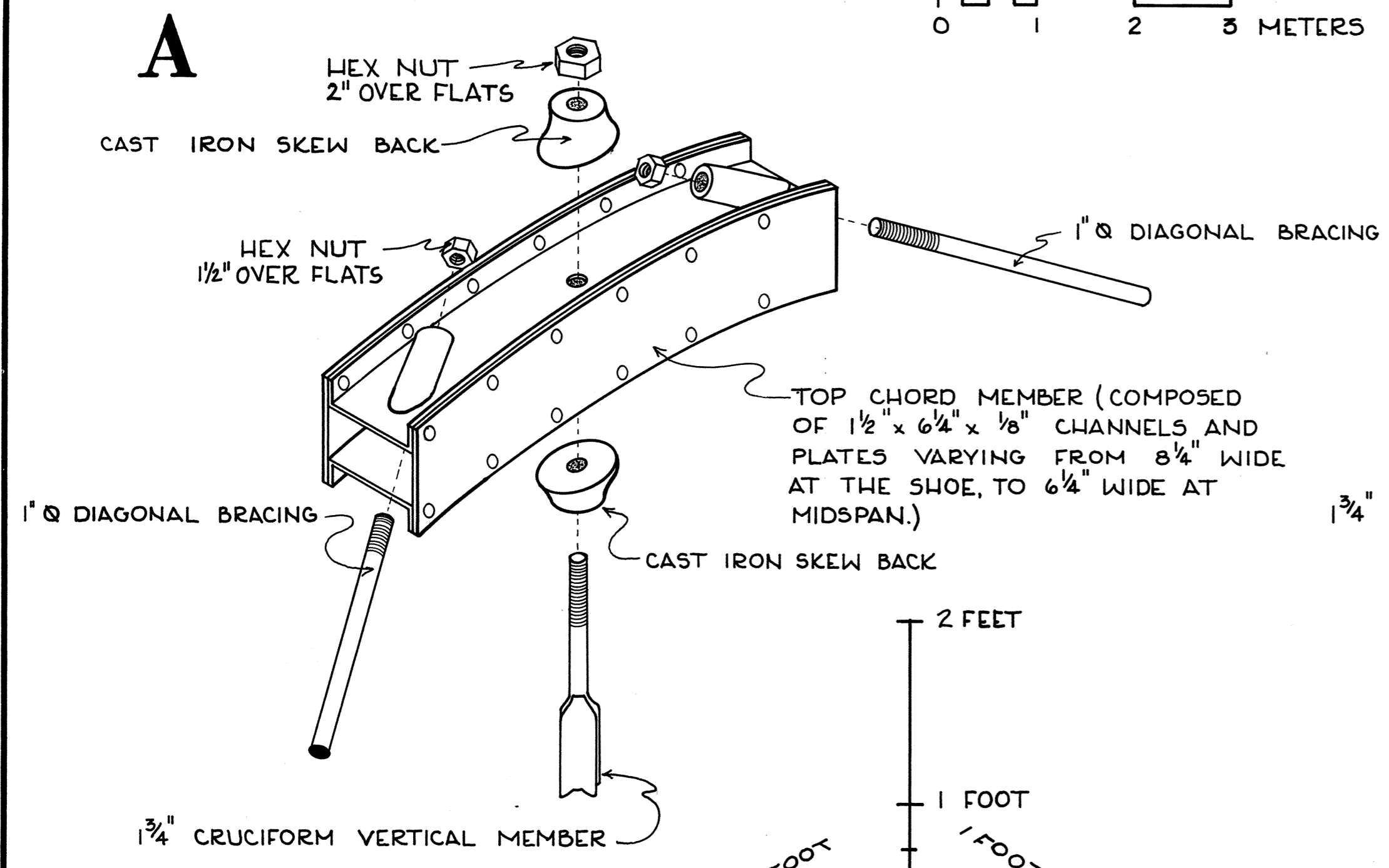


PLAN

SCALE: 1/4" = 1'-0"

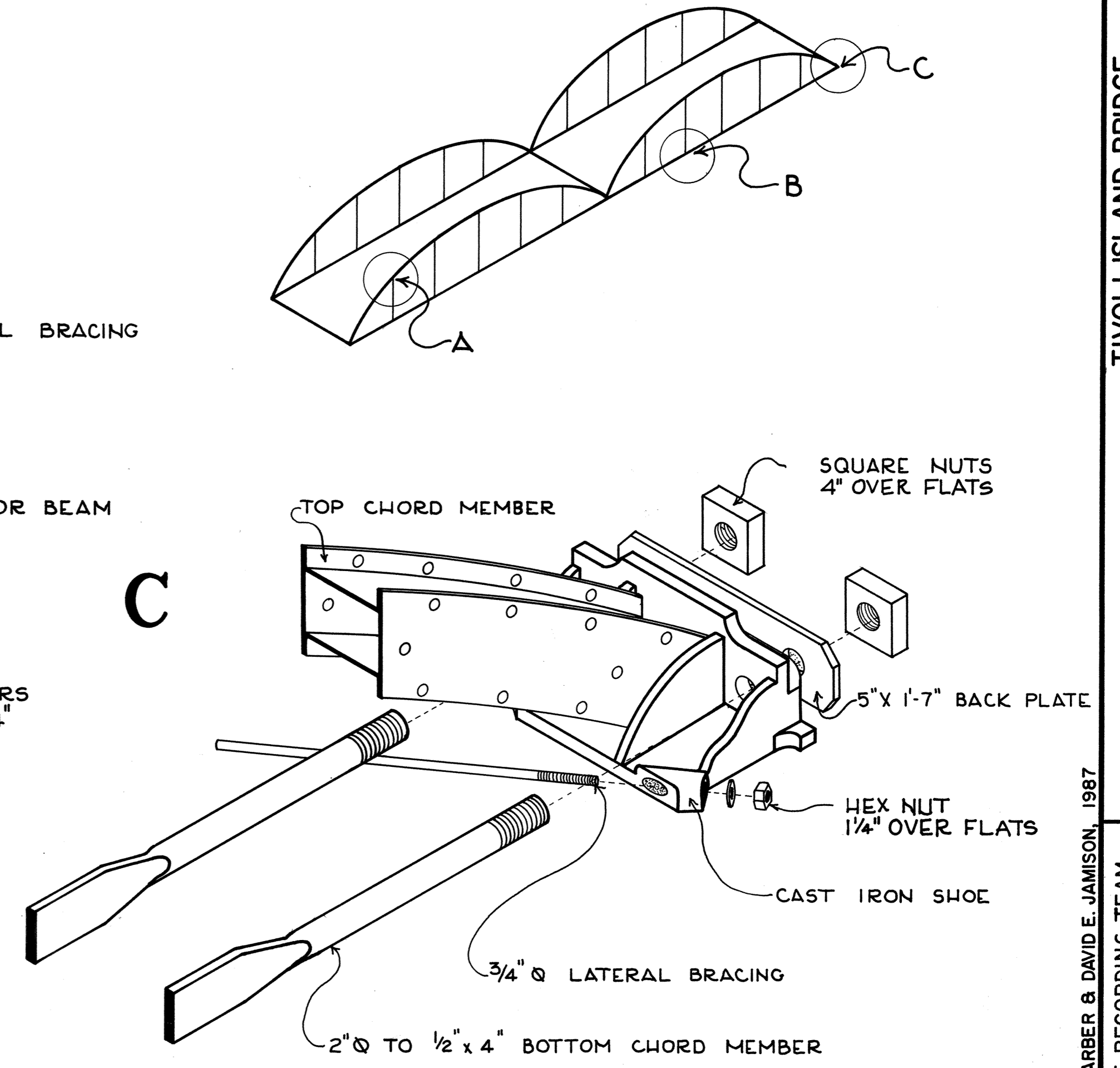
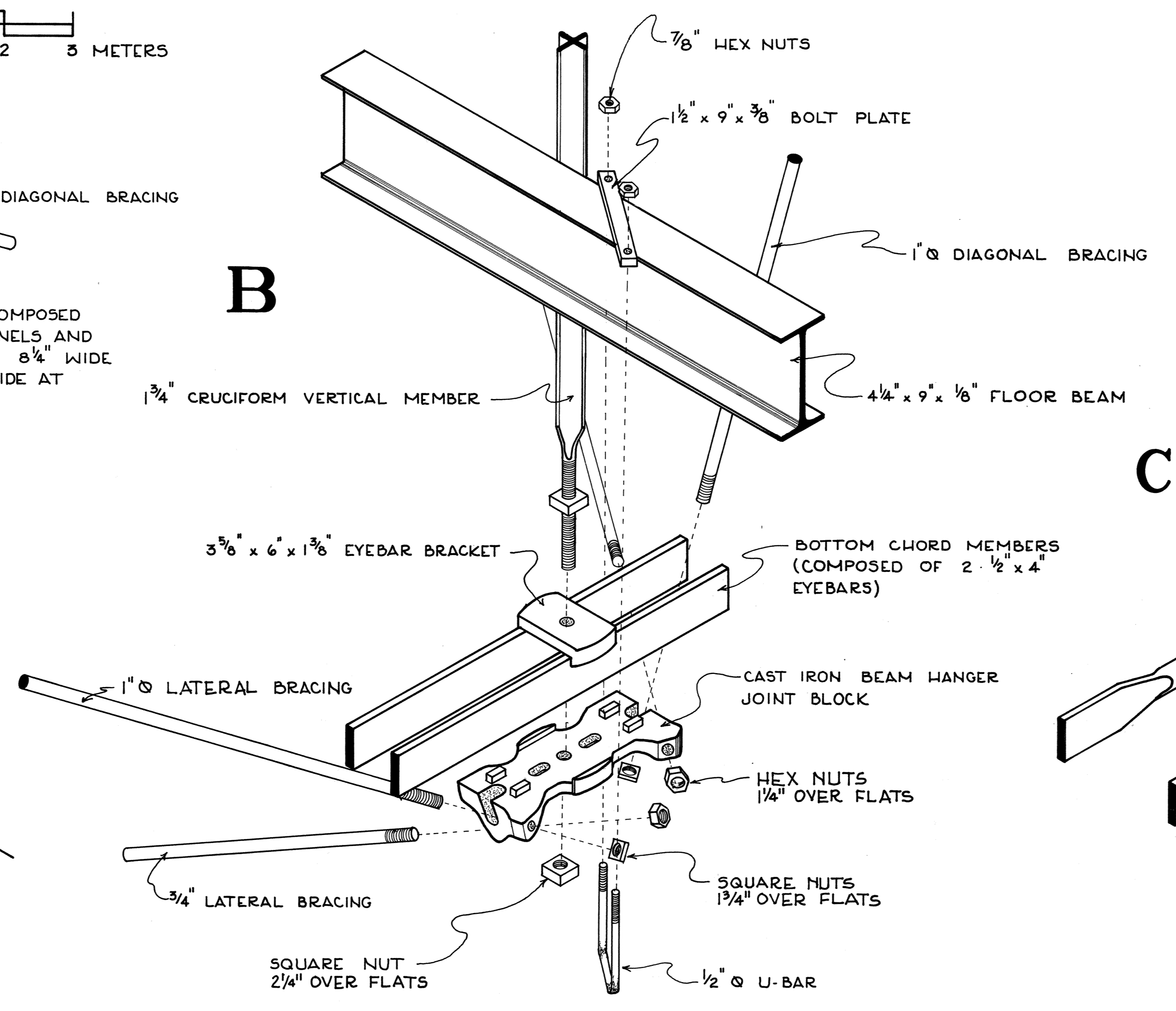
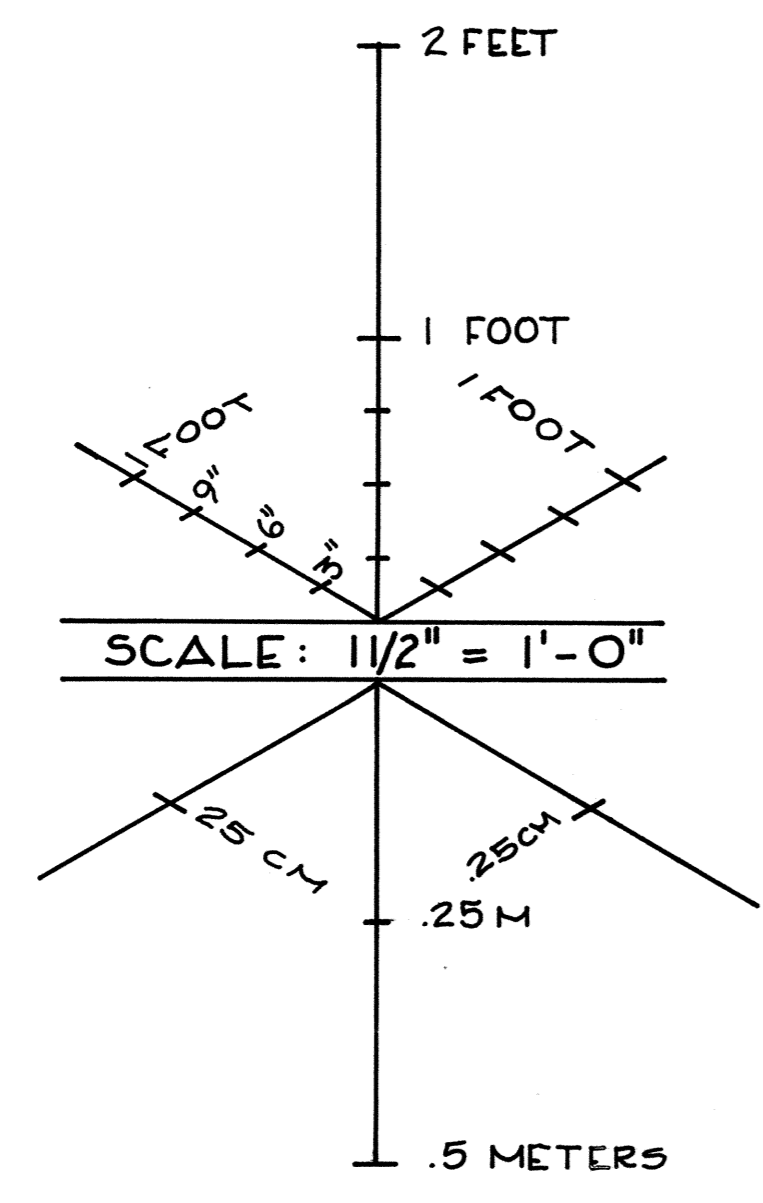


← DECK REMOVED TOP VIEW →



DETAILS

SCALE: 1/2" = 1'-0"



DELINEATED BY: SCOTT BARBER & DAVID E. JAMISON, 1987
 WISCONSIN BRIDGE RECORDING TEAM
 HISTORIC AMERICAN ENGINEERING RECORD
 NATIONAL PARK SERVICE
 UNITED STATES DEPARTMENT OF THE INTERIOR
 TIVOLI ISLAND BRIDGE, c.1877
 SPANNING THE ROCK RIVER TO TIVOLI ISLAND ADJACENT TO MAIN STREET, EASTERN TOWN LIMITS
 WATER TOWN JEFFERSON COUNTY WISCONSIN
 SHEET 2 of 2
 HISTORIC AMERICAN ENGINEERING RECORD
 WI-21
 IF REPRODUCED, PLEASE CREDIT: HISTORIC AMERICAN ENGINEERING RECORD, NATIONAL PARK SERVICE, NAME OF DELINEATOR, DATE OF THE DRAWING